



Rural and Urban Studies

Course Overview

Program Outcomes

- | | |
|------------|---|
| PO1 | Graduates will critically analyze social realities, understand their changing dynamics, and actively engage in processes that contribute to positive social transformation. |
| PO2 | They will demonstrate an in-depth understanding of diverse communities, their unique challenges, and systemic inequalities, and advocate for social justice in their professional practice. |
| PO3 | Graduates will apply appropriate social work methods and strategies to effectively work with individuals, groups, and communities, addressing various social issues. |
| PO4 | They will embody professional social work values and ethics, ensuring integrity, respect, and accountability in all aspects of their practice. |
| PO5 | Graduates will develop problem-solving abilities and intervention strategies tailored to the needs of marginalized and vulnerable populations. |
| PO6 | They will integrate research and evidence-based knowledge to design, implement, and evaluate social work interventions effectively. |
| PO7 | Graduates will exhibit strong communication skills and the ability to collaborate with multidisciplinary teams to address social challenges holistically. |
| PO8 | They will demonstrate a commitment to lifelong learning, staying informed about emerging trends and practices in the field of social work. |

Course Outcomes

- | | |
|------------|--|
| CO1 | To Understand the historical development, structures, and governance of rural and urban societies in India. |
| CO2 | To Apply sociological theories to analyze rural and urban issues, including social stratification, class disparities, and gender discrimination. |
| CO3 | To Analyze development policies, programs, and interventions by government and NGOs in rural, urban, and tribal contexts. |
| CO4 | To Evaluate the impact of migration, slum development, agrarian crises, and other socio-economic issues on rural and urban populations. |

CO-PO Mapping

courseOutcomes	PO1	PO2	PO3	PO4	PO5	PO6	PO7	PO8	Average
COMinor 202 .1	3	2	2	2	2	2	1	2	2
COMinor 202 .2	3	3	3	2	3	2	2	2	2.5
COMinor 202 .3	3	3	2	2	2	3	2	2	2.37
COMinor 202 .4	3	3	2	2	3	3	2	2	2.5
Average	3	2.75	2.25	2	2.5	2.5	1.75	2	-

CO Attainment Weightages

Direct Attainment	Indirect Attainment
80 %	20 %

CO Assessment Weightages

Formative (CIE)	Summative (SEE)
40 %	60 %

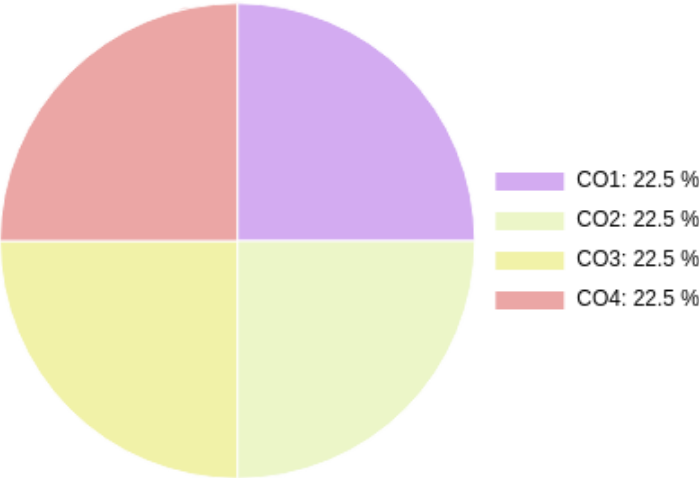
CO targets & Attainment Levels

CO	Target	Direct Attainment levels			Indirect Attainment levels		
		Level 1	Level 2	Level 3	Level 1	Level 2	Level 3
CO1	2	0 - 40	41 - 50	51 - 100	0 - 40	41 - 50	51 - 100
CO2	2.5	0 - 40	41 - 50	51 - 100	0 - 40	41 - 50	51 - 100
CO3	2.37	0 - 40	41 - 50	51 - 100	0 - 40	41 - 50	51 - 100
CO4	2.5	0 - 40	41 - 50	51 - 100	0 - 40	41 - 50	51 - 100

Exam Results

Exam Name	Threshold
Unit 1	50%
Unit 2	50%
Unit 3	50%
Unit 4	50%
External Exam	50%

CO Coverage



COs	CO1	CO2	CO3	CO4
100	22.5	22.5	22.5	22.5
%	22.5	22.5	22.5	22.5

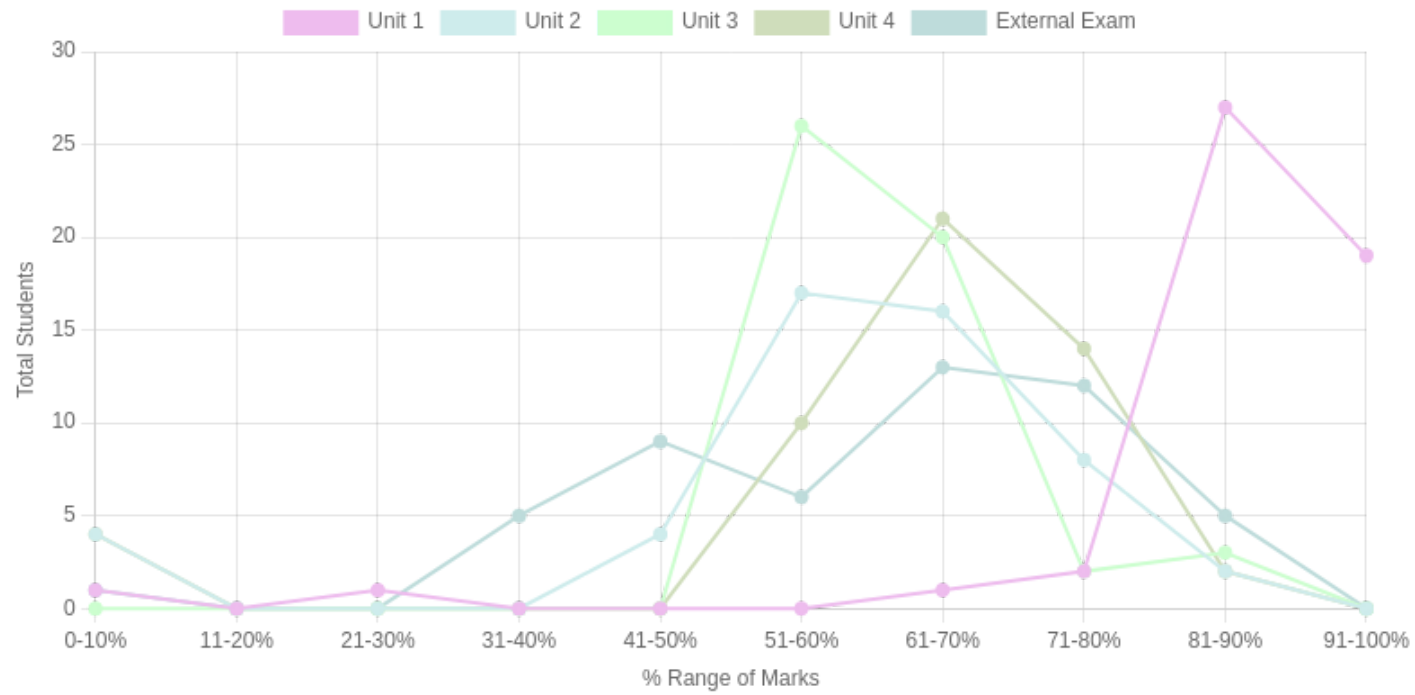
Formative (CIE) Assessments

Sr No	Exam Name	Total Marks	Threshold in %	CO1	CO2	CO3	CO4	CO5	CO6	Avg Attainment
1	Unit 1	10	50	3	3	3	3	-	-	3
2	Unit 2	10	50	3	3	3	3	-	-	3
3	Unit 3	10	50	-	-	-	-	-	-	
4	Unit 4	10	50	3	3	3	3	-	-	3

Summative (SEE) Assessments

Sr No	Exam Name	Total Marks	Threshold in %	CO1	CO2	CO3	CO4	CO5	CO6	Avg Attainment
5	External Exam	60	50	3	3	3	3	-	-	3

Student % wise Distribution



Sr No	Assessment Title	Type	Total Marks	Avg Marks	Threshold in %	No of Students Scoring										Total Students Above Threshold
						0-10%	11-20%	21-30%	31-40%	41-50%	51-60%	61-70%	71-80%	81-90%	91-100%	
1	Unit 1	F	10	9	50	1	0	1	0	0	0	1	2	27	19	49
2	Unit 2	F	10	6.19	50	4	0	0	0	4	17	16	8	2	0	47
3	Unit 3	F	10	6.64	50	0	0	0	0	0	26	20	2	3	0	51
4	Unit 4	F	10	6.6	50	4	0	0	0	0	10	21	14	2	0	47
5	External Exam	S	60	36.78	50	1	0	0	5	9	6	13	12	5	0	37

CO Indirect Attainment

Course Exit Survey - BSW - SEM 4

Q1	Were you able to understand the historical development, structures, and governance of rural and urban societies in India?
Scale	Strongly Agree <input type="radio"/> Agree <input type="radio"/> Disagree <input type="radio"/>
Q2	Were you able to apply sociological theories to analyze rural and urban issues, including social stratification, class disparities, and gender discrimination?
Scale	Strongly Agree <input type="radio"/> Agree <input type="radio"/> Disagree <input type="radio"/>
Q3	Were you able to analyze development policies, programs, and interventions by government and NGOs in rural, urban, and tribal contexts?
Scale	Strongly Agree <input type="radio"/> Agree <input type="radio"/> Disagree <input type="radio"/>
Q4	Were you able to evaluate the impact of migration, slum development, agrarian crises, and other socio-economic issues on rural and urban populations?
Scale	Strongly Agree <input type="radio"/> Agree <input type="radio"/> Disagree <input type="radio"/>

CO Attainment

CO	Direct Attainment	Indirect Attainment	Final Attainment	Target	Gap	Justification
CO1	3	3	3	2	1	-
CO2	3	3	3	2.5	0.5	-
CO3	3	3	3	2.37	0.62	-
CO4	3	3	3	2.5	0.5	-

Average CO Attainment : 3

PO Direct Attainment

Weighted Average Matrix

POs	PO1	PO2	PO3	PO4	PO5	PO6	PO7	PO8
Weighted Avg	3	2.75	2.25	2	2.5	2.5	1.75	2

Average CO Attainment : 3

POs	PO1	PO2	PO3	PO4	PO5	PO6	PO7	PO8
Calculation	3 (3)/ 3	2.75 (3)/ 3	2.25 (3)/ 3	2 (3)/ 3	2.5 (3)/ 3	2.5 (3)/ 3	1.75 (3)/ 3	2 (3)/ 3
Direct Attainment	3.00	2.75	2.25	2.00	2.50	2.50	1.75	2.00

COURSE OVERVIEW | BSW



Basic Counselling Skills

Course Overview

Program Outcomes

- | | |
|------------|---|
| PO1 | Graduates will critically analyze social realities, understand their changing dynamics, and actively engage in processes that contribute to positive social transformation. |
| PO2 | They will demonstrate an in-depth understanding of diverse communities, their unique challenges, and systemic inequalities, and advocate for social justice in their professional practice. |
| PO3 | Graduates will apply appropriate social work methods and strategies to effectively work with individuals, groups, and communities, addressing various social issues. |
| PO4 | They will embody professional social work values and ethics, ensuring integrity, respect, and accountability in all aspects of their practice. |
| PO5 | Graduates will develop problem-solving abilities and intervention strategies tailored to the needs of marginalized and vulnerable populations. |
| PO6 | They will integrate research and evidence-based knowledge to design, implement, and evaluate social work interventions effectively. |
| PO7 | Graduates will exhibit strong communication skills and the ability to collaborate with multidisciplinary teams to address social challenges holistically. |
| PO8 | They will demonstrate a commitment to lifelong learning, staying informed about emerging trends and practices in the field of social work. |

Course Outcomes

- | | |
|------------|---|
| CO1 | To apply essential counselling skills, including active listening, empathy, and problem assessment, to enhance communication and intervention strategies. |
| CO2 | To analyze different counselling approaches and techniques, evaluating their applicability across diverse settings and populations. |
| CO3 | To evaluate the ethical considerations, professional values, and challenges in counselling practices, ensuring integrity and effectiveness in interventions. |
| CO4 | To create structured counselling sessions by integrating theoretical frameworks, skills, and tools to address client needs effectively across various settings. |

CO-PO Mapping

courseOutcomes	PO1	PO2	PO3	PO4	PO5	PO6	PO7	PO8	Average
COBCSK 6.6.1	2	2	3	2	3	2	3	2	2.37
COBCSK 6.6.2	3	3	2	2	2	3	2	2	2.37
COBCSK 6.6.3	3	2	2	3	2	2	2	3	2.37
COBCSK 6.6.4	3	3	3	3	3	3	3	3	3
Average	2.75	2.5	2.5	2.5	2.5	2.5	2.5	2.5	-

CO Attainment Weightages

Direct Attainment	Indirect Attainment
80 %	20 %

CO Assessment Weightages

Formative (CIE)	Summative (SEE)
40 %	60 %

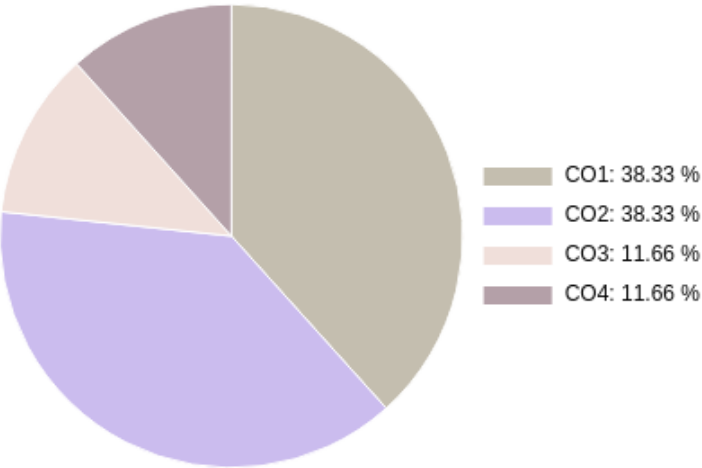
CO targets & Attainment Levels

CO	Target	Direct Attainment levels			Indirect Attainment levels		
		Level 1	Level 2	Level 3	Level 1	Level 2	Level 3
CO2	2.37	0 - 40	41 - 50	51 - 100	0 - 40	41 - 50	51 - 100
CO4	3	0 - 40	41 - 50	51 - 100	0 - 40	41 - 50	51 - 100
CO1	2.37	0 - 40	41 - 50	51 - 100	0 - 40	41 - 50	51 - 100
CO3	2.37	0 - 40	41 - 50	51 - 100	0 - 40	41 - 50	51 - 100

Exam Results

Exam Name	Threshold
Unit 1	50%
Unit 2	50%
Unit 3	50%
Unit 4	50%
External Exam	50%

CO Coverage



COs	CO1	CO2	CO3	CO4
45	17.3	17.3	5.3	5.3
%	38.3	38.3	11.7	11.7

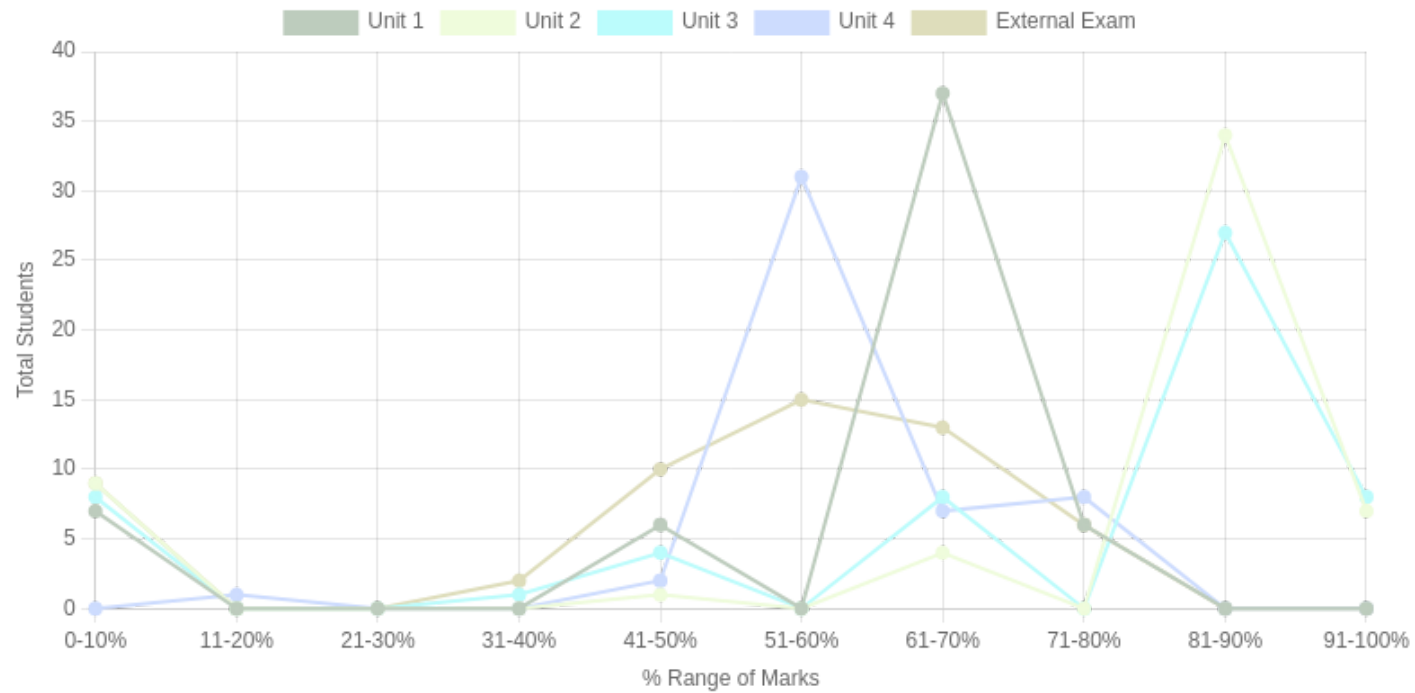
Formative (CIE) Assessments

Sr No	Exam Name	Total Marks	Threshold in %	CO1	CO2	CO3	CO4	CO5	CO6	Avg Attainment
1	Unit 1	4	50	3	3	3	3	-	-	3
2	Unit 2	3	50	3	3	3	3	-	-	3
3	Unit 3	3	50	3	3	3	3	-	-	3
4	Unit 4	5	50	3	3	3	3	-	-	3

Summative (SEE) Assessments

Sr No	Exam Name	Total Marks	Threshold in %	CO1	CO2	CO3	CO4	CO5	CO6	Avg Attainment
5	External Exam	30	50	3	3	3	3	-	-	3

Student % wise Distribution



Sr No	Assessment Title	Type	Total Marks	Avg Marks	Threshold in %	No of Students Scoring										Total Students Above Threshold
						0-10%	11-20%	21-30%	31-40%	41-50%	51-60%	61-70%	71-80%	81-90%	91-100%	
1	Unit 1	F	4	2.18	50	7	0	0	0	6	0	37	6	0	0	49
2	Unit 2	F	3	2.1	50	9	0	0	0	1	0	4	0	34	7	46
3	Unit 3	F	3	2.04	50	8	0	0	1	4	0	8	0	27	8	47
4	Unit 4	F	5	3.17	50	0	1	0	0	2	31	7	8	0	0	48
5	External Exam	S	30	14.68	50	9	0	0	2	10	15	13	6	0	0	37

CO Indirect Attainment

Course Exit Survey Feedback BSW SEM 6

Q1	Were you able to apply essential counselling skills, including active listening, empathy, and problem assessment, to enhance communication and intervention strategies?
Scale	Strongly Agree <input type="radio"/> Agree <input type="radio"/> Disagree <input type="radio"/>
Q2	Were you able to analyze different counselling approaches and techniques, evaluating their applicability across diverse settings and populations?
Scale	Strongly Agree <input type="radio"/> Agree <input type="radio"/> Disagree <input type="radio"/>
Q3	Were you able to evaluate the ethical considerations, professional values, and challenges in counselling practices, ensuring integrity and effectiveness in interventions?
Scale	Strongly Agree <input type="radio"/> Agree <input type="radio"/> Disagree <input type="radio"/>
Q4	Were you able to create structured counselling sessions by integrating theoretical frameworks, skills, and tools to address client needs effectively across various settings?
Scale	Strongly Agree <input type="radio"/> Agree <input type="radio"/> Disagree <input type="radio"/>

CO Attainment

CO	Direct Attainment	Indirect Attainment	Final Attainment	Target	Gap	Justification
CO1	1.2	0	0.96	2.37	-1.41	-
CO2	1.2	3	1.56	2.37	-0.81	-
CO3	1.2	3	1.56	2.37	-0.81	-
CO4	1.2	3	1.56	3	-1.44	-

Average CO Attainment : 1.41

PO Direct Attainment

Weighted Average Matrix

POs	PO1	PO2	PO3	PO4	PO5	PO6	PO7	PO8
Weighted Avg	2.75	2.5	2.5	2.5	2.5	2.5	2.5	2.5

Average CO Attainment : 1.41

POs	PO1	PO2	PO3	PO4	PO5	PO6	PO7	PO8
Calculation	2.75 (1.41)/ 3	2.5 (1.41)/ 3	2.5 (1.41)/ 3	2.5 (1.41)/ 3	2.5 (1.41)/ 3	2.5 (1.41)/ 3	2.5 (1.41)/ 3	2.5 (1.41)/ 3
Direct Attainment	1.29	1.18	1.18	1.18	1.18	1.18	1.18	1.18

COURSE OVERVIEW | BSW



Disability Studies

Course Overview

Program Outcomes

- | | |
|------------|---|
| PO1 | Graduates will critically analyze social realities, understand their changing dynamics, and actively engage in processes that contribute to positive social transformation. |
| PO2 | They will demonstrate an in-depth understanding of diverse communities, their unique challenges, and systemic inequalities, and advocate for social justice in their professional practice. |
| PO3 | Graduates will apply appropriate social work methods and strategies to effectively work with individuals, groups, and communities, addressing various social issues. |
| PO4 | They will embody professional social work values and ethics, ensuring integrity, respect, and accountability in all aspects of their practice. |
| PO5 | Graduates will develop problem-solving abilities and intervention strategies tailored to the needs of marginalized and vulnerable populations. |
| PO6 | They will integrate research and evidence-based knowledge to design, implement, and evaluate social work interventions effectively. |
| PO7 | Graduates will exhibit strong communication skills and the ability to collaborate with multidisciplinary teams to address social challenges holistically. |
| PO8 | They will demonstrate a commitment to lifelong learning, staying informed about emerging trends and practices in the field of social work. |

Course Outcomes

- | | |
|------------|--|
| CO1 | To apply social work interventions at various levels to support persons with disabilities and their families, ensuring access to essential services and rights. |
| CO2 | To analyze the challenges faced by persons with disabilities through different disability perspectives, including medical, social, ICF, and human rights models. |
| CO3 | To evaluate the effectiveness of national legislations, government programs, and policies in addressing the rights and needs of persons with disabilities. |
| CO4 | To create inclusive strategies and advocacy plans to promote empowerment, accessibility, and social justice for persons with disabilities. |

CO-PO Mapping

courseOutcomes	PO1	PO2	PO3	PO4	PO5	PO6	PO7	PO8	Average
CODISS 6.5.1	3	3	3	2	3	2	2	2	2.5
CODISS 6.5.2	3	3	2	2	2	3	2	2	2.37
CODISS 6.5.3	3	3	2	3	2	3	2	2	2.5
CODISS 6.5.4	3	3	3	3	3	3	2	3	2.87
Average	3	3	2.5	2.5	2.5	2.75	2	2.25	-

CO Attainment Weightages

Direct Attainment	Indirect Attainment
80 %	20 %

CO Assessment Weightages

Formative (CIE)	Summative (SEE)
40 %	60 %

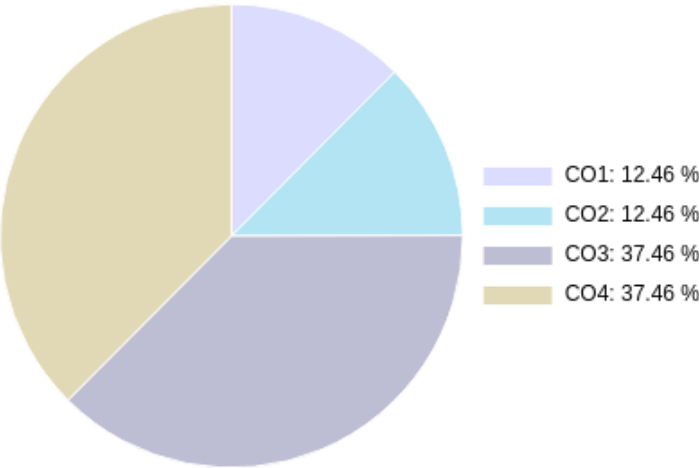
CO targets & Attainment Levels

CO	Target	Direct Attainment levels			Indirect Attainment levels		
		Level 1	Level 2	Level 3	Level 1	Level 2	Level 3
CO1	2.5	0 - 40	41 - 50	51 - 100	0 - 40	41 - 50	51 - 100
CO2	2.37	0 - 40	41 - 50	51 - 100	0 - 40	41 - 50	51 - 100
CO3	2.5	0 - 40	41 - 50	51 - 100	0 - 40	41 - 50	51 - 100
CO4	2.87	0 - 40	41 - 50	51 - 100	0 - 40	41 - 50	51 - 100

Exam Results

Exam Name	Threshold
Unit 1	50%
Unit 2	50%
Unit 3	50%
Unit 4	50%

CO Coverage



COs	CO1	CO2	CO3	CO4
15	1.9	1.9	5.6	5.6
%	12.5	12.5	37.5	37.5

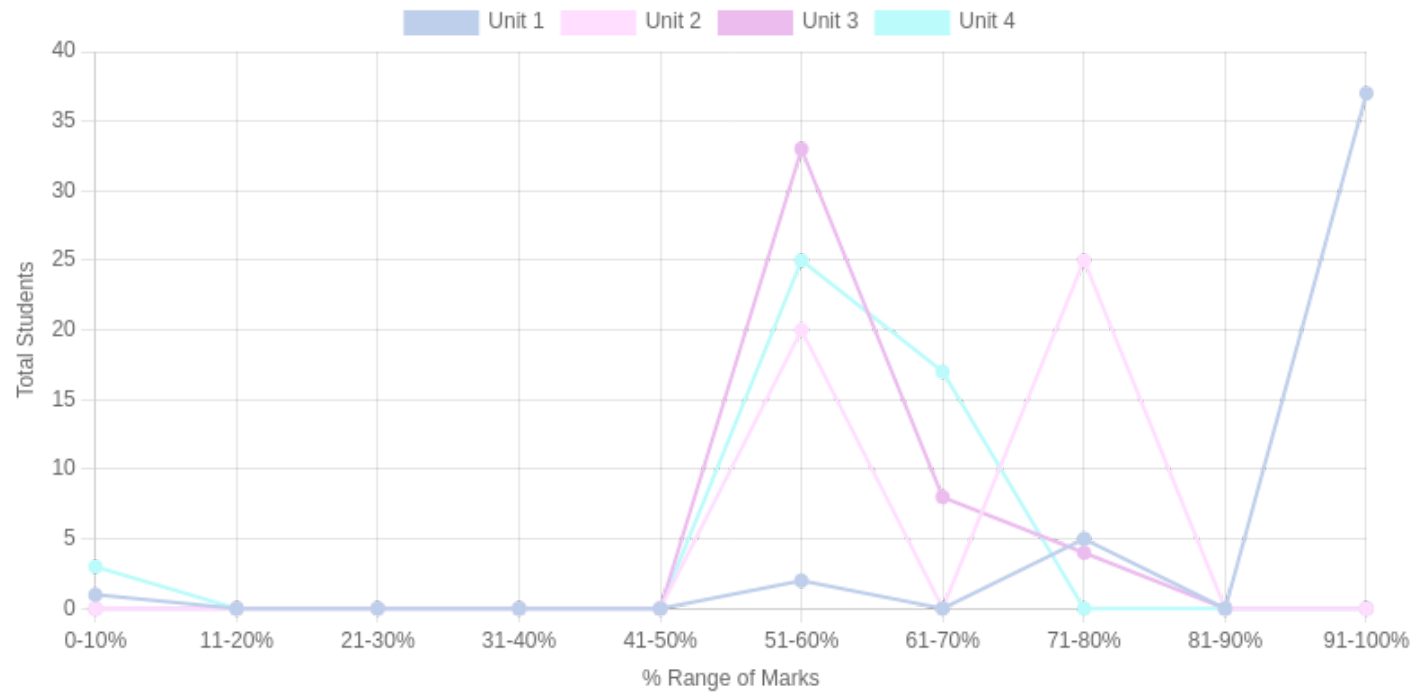
Formative (CIE) Assessments

Sr No	Exam Name	Total Marks	Threshold in %	CO1	CO2	CO3	CO4	CO5	CO6	Avg Attainment
1	Unit 1	2.5	50	3	3	3	3	-	-	3
2	Unit 2	2.5	50	3	3	-	-	-	-	3
3	Unit 3	5	50	-	-	3	-	-	-	3
4	Unit 4	5	50	-	-	-	3	-	-	3

Summative (SEE) Assessments

Sr No	Exam Name	Total Marks	Threshold in %	CO1	CO2	CO3	CO4	CO5	CO6	Avg Attainment
-------	-----------	-------------	----------------	-----	-----	-----	-----	-----	-----	----------------

Student % wise Distribution



Sr No	Assessment Title	Type	Total Marks	Avg Marks	Threshold in %	No of Students Scoring										Total Students Above Threshold
						0-10%	11-20%	21-30%	31-40%	41-50%	51-60%	61-70%	71-80%	81-90%	91-100%	
1	Unit 1	F	2.5	2.34	50	1	0	0	0	0	2	0	5	0	37	44
2	Unit 2	F	2.5	1.77	50	0	0	0	0	0	20	0	25	0	0	45
3	Unit 3	F	5	3.17	50	0	0	0	0	0	33	8	4	0	0	45
4	Unit 4	F	5	2.98	50	3	0	0	0	0	25	17	0	0	0	42

CO Indirect Attainment

Course Exit Survey Feedback BSW SEM 6

Q1	Were you able to apply social work interventions at various levels to support persons with disabilities and their families, ensuring access to essential services and rights?
Scale	Strongly Agree <input type="radio"/> Agree <input type="radio"/> Disagree <input type="radio"/>
Q2	Were you able to analyze the challenges faced by persons with disabilities through different disability perspectives, including medical, social, ICF, and human rights models?
Scale	Strongly Agree <input type="radio"/> Agree <input type="radio"/> Disagree <input type="radio"/>
Q3	Were you able to evaluate the effectiveness of national legislations, government programs, and policies in addressing the rights and needs of persons with disabilities?
Scale	Strongly Agree <input type="radio"/> Agree <input type="radio"/> Disagree <input type="radio"/>
Q4	Were you able to create inclusive strategies and advocacy plans to promote empowerment, accessibility, and social justice for persons with disabilities?
Scale	Strongly Agree <input type="radio"/> Agree <input type="radio"/> Disagree <input type="radio"/>

CO Attainment

CO	Direct Attainment	Indirect Attainment	Final Attainment	Target	Gap	Justification
CO1	1.2	3	1.56	2.5	-0.94	-
CO2	1.2	3	1.56	2.37	-0.81	-
CO3	1.2	3	1.56	2.5	-0.94	-
CO4	1.2	3	1.56	2.87	-1.31	-

Average CO Attainment : 1.56

PO Direct Attainment

Weighted Average Matrix

POs	PO1	PO2	PO3	PO4	PO5	PO6	PO7	PO8
Weighted Avg	3	3	2.5	2.5	2.5	2.75	2	2.25

Average CO Attainment : 1.56

POs	PO1	PO2	PO3	PO4	PO5	PO6	PO7	PO8
Calculation	3 (1.56)/ 3	3 (1.56)/ 3	2.5 (1.56)/ 3	2.5 (1.56)/ 3	2.5 (1.56)/ 3	2.75 (1.56)/ 3	2 (1.56)/ 3	2.25 (1.56)/ 3
Direct Attainment	1.56	1.56	1.30	1.30	1.30	1.43	1.04	1.17

COURSE OVERVIEW | BSW



Field Work-VI

Course Overview

Program Outcomes

- | | |
|-----|---|
| PO1 | Graduates will critically analyze social realities, understand their changing dynamics, and actively engage in processes that contribute to positive social transformation. |
| PO2 | They will demonstrate an in-depth understanding of diverse communities, their unique challenges, and systemic inequalities, and advocate for social justice in their professional practice. |
| PO3 | Graduates will apply appropriate social work methods and strategies to effectively work with individuals, groups, and communities, addressing various social issues. |
| PO4 | They will embody professional social work values and ethics, ensuring integrity, respect, and accountability in all aspects of their practice. |
| PO5 | Graduates will develop problem-solving abilities and intervention strategies tailored to the needs of marginalized and vulnerable populations. |
| PO6 | They will integrate research and evidence-based knowledge to design, implement, and evaluate social work interventions effectively. |
| PO7 | Graduates will exhibit strong communication skills and the ability to collaborate with multidisciplinary teams to address social challenges holistically. |
| PO8 | They will demonstrate a commitment to lifelong learning, staying informed about emerging trends and practices in the field of social work. |

Course Outcomes

CO1

To apply social work methods, intervention strategies, and administrative skills in real-world settings to address individual, group, and community issues while adhering to professional ethics and values.

CO2

To analyze the socio-economic and cultural factors influencing individuals, groups, and communities, critically assessing their needs and linking them to appropriate social work interventions.

CO3

To evaluate the effectiveness of welfare schemes, policies, and organizational strategies in addressing social issues, identifying gaps, and recommending improvements for enhanced social justice.

CO4

To create innovative community engagement models, advocacy campaigns, and awareness materials to strengthen social work practice and promote sustainable social change.

CO-PO Mapping

courseOutcomes	PO1	PO2	PO3	PO4	PO5	PO6	PO7	PO8	Average
COBFW6 6.8.1	3	2	3	3	3	2	3	2	2.62
COBFW6 6.8.2	3	3	2	2	2	2	2	2	2.25
COBFW6 6.8.3	3	3	2	3	2	3	2	2	2.5
COBFW6 6.8.4	3	3	3	3	3	3	3	3	3
Average	3	2.75	2.5	2.75	2.5	2.5	2.5	2.25	-

CO Attainment Weightages

Direct Attainment	Indirect Attainment
80 %	20 %

CO Assessment Weightages

Formative (CIE)	Summative (SEE)
40 %	60 %

CO targets & Attainment Levels

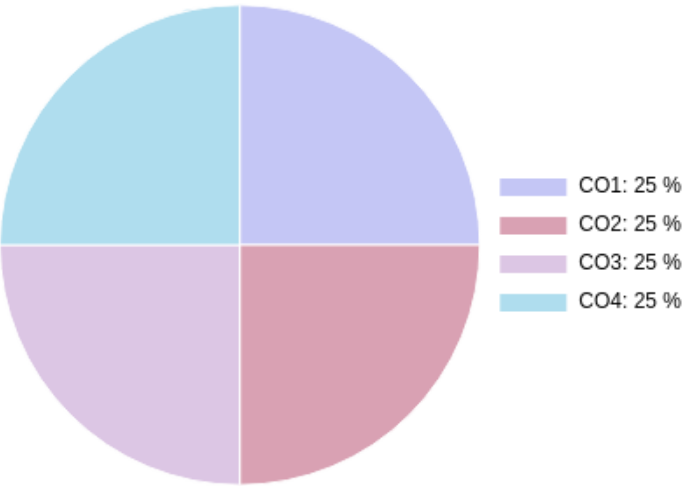
CO	Target	Direct Attainment levels			Indirect Attainment levels		
		Level 1	Level 2	Level 3	Level 1	Level 2	Level 3
CO2	2.25	0 - 40	41 - 50	51 - 100	0 - 40	41 - 50	51 - 100

CO	Target	Direct Attainment levels			Indirect Attainment levels		
		Level 1	Level 2	Level 3	Level 1	Level 2	Level 3
CO4	3	0 - 40	41 - 50	51 - 100	0 - 40	41 - 50	51 - 100
CO1	2.62	0 - 40	41 - 50	51 - 100	0 - 40	41 - 50	51 - 100
CO3	2.5	0 - 40	41 - 50	51 - 100	0 - 40	41 - 50	51 - 100

Exam Results

Exam Name	Threshold
Analytical Ability(Field Work)	50%
Skills(Field Work)	50%
Professional Development(Field Work)	50%
Use of Field Instruction(Field Work)	50%
External Exam	50%

CO Coverage



COs	CO1	CO2	CO3	CO4
100	25.0	25.0	25.0	25.0
%	25.0	25.0	25.0	25.0

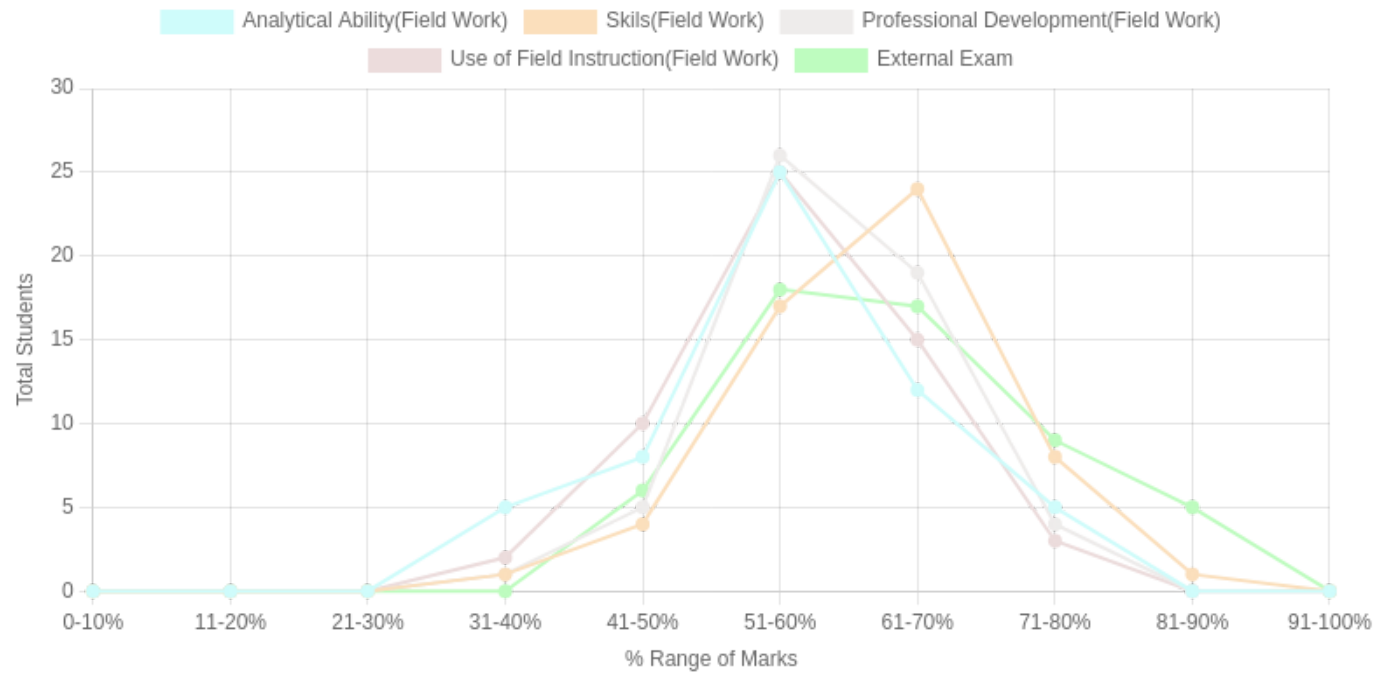
Formative (CIE) Assessments

Sr No	Exam Name	Total Marks	Threshold in %	CO1	CO2	CO3	CO4	CO5	CO6	Avg Attainment
1	Analytical Ability(Field Work)	10	50	3	3	3	3	-	-	3
2	Skills(Field Work)	10	50	3	3	3	3	-	-	3
3	Professional Development(Field Work)	30	50	3	3	3	3	-	-	3
4	Use of Field Instruction(Field Work)	10	50	3	3	3	3	-	-	3

Summative (SEE) Assessments

Sr No	Exam Name	Total Marks	Threshold in %	CO1	CO2	CO3	CO4	CO5	CO6	Avg Attainment
5	External Exam	40	50	3	3	3	3	-	-	3

Student % wise Distribution



Sr No	Assessment Title	Type	Total Marks	Avg Marks	Threshold in %	No of Students Scoring										Total Students Above Threshold
						0-10%	11-20%	21-30%	31-40%	41-50%	51-60%	61-70%	71-80%	81-90%	91-100%	
1	Analytical Ability(Field Work)	F	10	6.07	50	0	0	0	5	8	25	12	5	0	0	50
2	Skills(Field Work)	F	10	6.66	50	0	0	0	1	4	17	24	8	1	0	54
3	Professional Development(Field Work)	F	30	18.52	50	0	0	0	1	5	26	19	4	0	0	52
4	Use of Field Instruction(Field Work)	F	10	6.12	50	0	0	0	2	10	25	15	3	0	0	53
5	External Exam	S	40	25.67	50	0	0	0	0	6	18	17	9	5	0	50

CO Indirect Attainment

Course Exit Survey Feedback BSW SEM 6

Q1	Were you able to apply social work methods, intervention strategies, and administrative skills in real-world settings to address individual, group, and community issues while adhering to professional ethics and values?
Scale	Strongly Agree <input type="radio"/> Agree <input type="radio"/> Disagree <input type="radio"/>
Q2	Were you able to analyze the socio-economic and cultural factors influencing individuals, groups, and communities, critically assessing their needs and linking them to appropriate social work interventions?
Scale	Strongly Agree <input type="radio"/> Agree <input type="radio"/> Disagree <input type="radio"/>
Q3	Were you able to evaluate the effectiveness of welfare schemes, policies, and organizational strategies in addressing social issues, identifying gaps, and recommending improvements for enhanced social justice?
Scale	Strongly Agree <input type="radio"/> Agree <input type="radio"/> Disagree <input type="radio"/>
Q4	Were you able to create innovative community engagement models, advocacy campaigns, and awareness materials to strengthen social work practice and promote sustainable social change?
Scale	Strongly Agree <input type="radio"/> Agree <input type="radio"/> Disagree <input type="radio"/>

CO Attainment

CO	Direct Attainment	Indirect Attainment	Final Attainment	Target	Gap	Justification
CO1	3	2	2.8	2.62	0.17	-
CO2	3	1	2.6	2.25	0.35	-
CO3	3	3	3	2.5	0.5	-
CO4	3	2	2.8	3	-0.2	-

Average CO Attainment : 2.8

PO Direct Attainment

Weighted Average Matrix

POs	PO1	PO2	PO3	PO4	PO5	PO6	PO7	PO8
Weighted Avg	3	2.75	2.5	2.75	2.5	2.5	2.5	2.25

Average CO Attainment : 2.8

POs	PO1	PO2	PO3	PO4	PO5	PO6	PO7	PO8
Calculation	3 (2.8)/ 3	2.75 (2.8)/ 3	2.5 (2.8)/ 3	2.75 (2.8)/ 3	2.5 (2.8)/ 3	2.5 (2.8)/ 3	2.5 (2.8)/ 3	2.25 (2.8)/ 3
Direct Attainment	2.80	2.57	2.33	2.57	2.33	2.33	2.33	2.10



Human Rights

Course Overview

Program Outcomes

- | | |
|------------|---|
| PO1 | Graduates will critically analyze social realities, understand their changing dynamics, and actively engage in processes that contribute to positive social transformation. |
| PO2 | They will demonstrate an in-depth understanding of diverse communities, their unique challenges, and systemic inequalities, and advocate for social justice in their professional practice. |
| PO3 | Graduates will apply appropriate social work methods and strategies to effectively work with individuals, groups, and communities, addressing various social issues. |
| PO4 | They will embody professional social work values and ethics, ensuring integrity, respect, and accountability in all aspects of their practice. |
| PO5 | Graduates will develop problem-solving abilities and intervention strategies tailored to the needs of marginalized and vulnerable populations. |
| PO6 | They will integrate research and evidence-based knowledge to design, implement, and evaluate social work interventions effectively. |
| PO7 | Graduates will exhibit strong communication skills and the ability to collaborate with multidisciplinary teams to address social challenges holistically. |
| PO8 | They will demonstrate a commitment to lifelong learning, staying informed about emerging trends and practices in the field of social work. |

Course Outcomes

- | | |
|-----|--|
| CO1 | To Analyze the origin, evolution, and major milestones in the development of human rights, linking these to their impact on individuals, groups, and communities. |
| CO2 | To evaluate the characteristics, classifications, and typologies of human rights to understand their application across diverse social realities. |
| CO3 | To Assess the human rights concerns of marginalized and vulnerable populations, exploring systemic barriers and sustainable interventions to promote social justice and equity. |
| CO4 | To Analyze the role of the Constitution, civil society movements, and governmental and non-governmental organizations in enforcing and safeguarding human rights, while acquiring basic para-legal skills for advocacy and action. |

CO-PO Mapping

courseOutcomes	PO1	PO2	PO3	PO4	PO5	PO6	PO7	PO8	Average
COHURI 6.3.1	3	2	2	2	2	2	1	2	2
COHURI 6.3.2	3	3	2	3	2	2	2	2	2.37
COHURI 6.3.3	3	3	3	3	3	2	2	2	2.62
COHURI 6.3.4	3	3	3	3	3	3	3	3	3
Average	3	2.75	2.5	2.75	2.5	2.25	2	2.25	-

CO Attainment Weightages

Direct Attainment	Indirect Attainment
80 %	20 %

CO Assessment Weightages

Formative (CIE)	Summative (SEE)
40 %	60 %

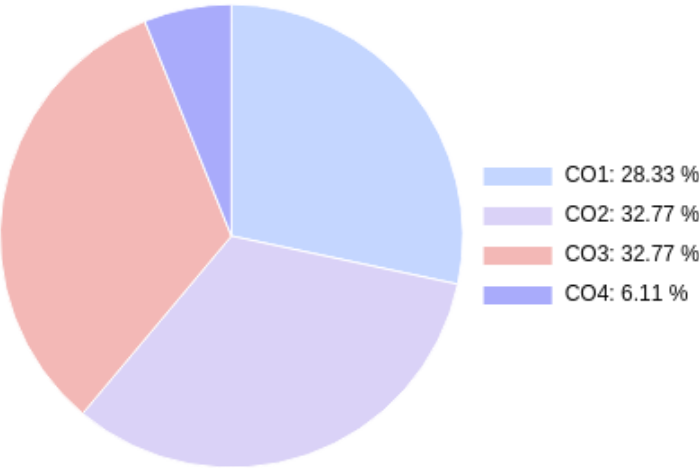
CO targets & Attainment Levels

CO	Target	Direct Attainment levels			Indirect Attainment levels		
		Level 1	Level 2	Level 3	Level 1	Level 2	Level 3
CO3	2.62	0 - 40	41 - 50	51 - 100	0 - 40	41 - 50	51 - 100
CO1	2	0 - 40	41 - 50	51 - 100	0 - 40	41 - 50	51 - 100
CO4	3	0 - 40	41 - 50	51 - 100	0 - 40	41 - 50	51 - 100
CO2	2.37	0 - 40	41 - 50	51 - 100	0 - 40	41 - 50	51 - 100

Exam Results

Exam Name	Threshold
Unit 1	50%
Unit 2	50%
Unit 3	50%
Unit 4	50%
External Exam	50%

CO Coverage



COs	CO1	CO2	CO3	CO4
45	14.8	14.8	12.8	2.8
%	32.8	32.8	28.3	6.1

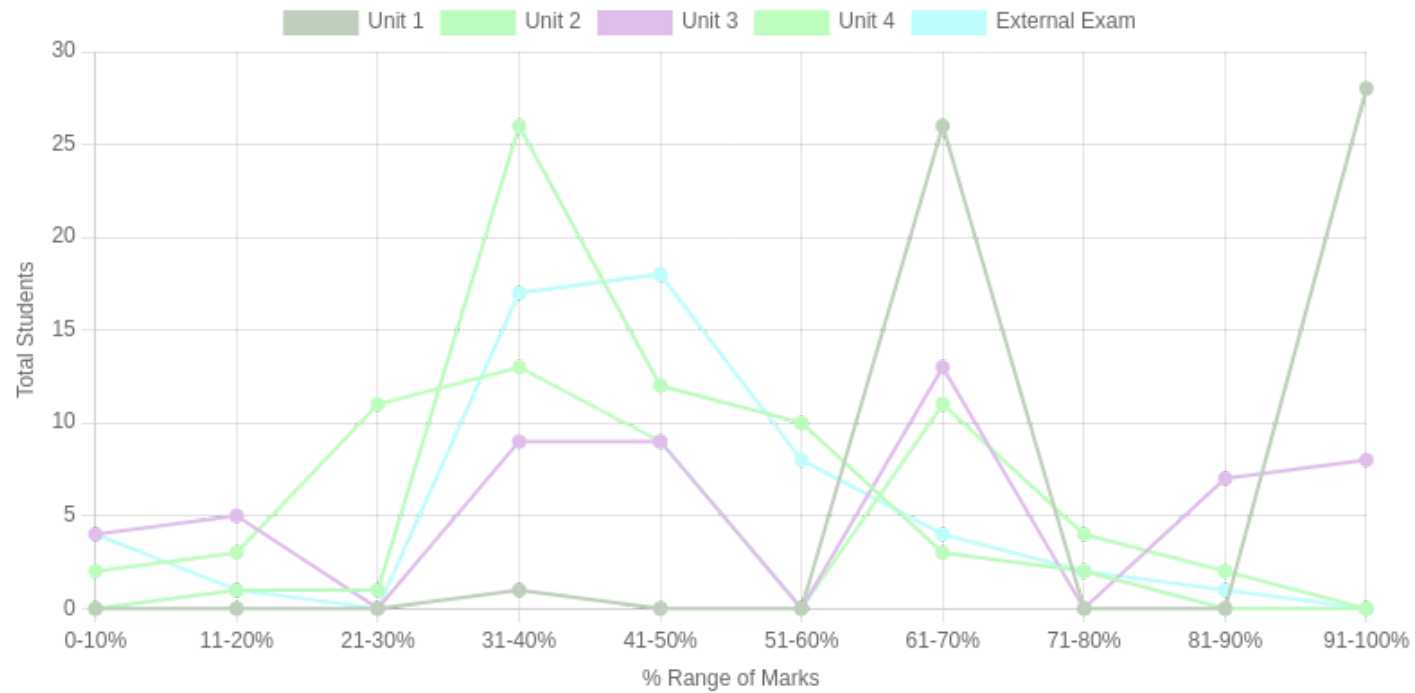
Formative (CIE) Assessments

Sr No	Exam Name	Total Marks	Threshold in %	CO1	CO2	CO3	CO4	CO5	CO6	Avg Attainment
1	Unit 1	3	50	-	-	3	-	-	-	3
2	Unit 2	5	50	2	2	2	2	-	-	2
3	Unit 3	3	50	-	-	3	-	-	-	3
4	Unit 4	4	50	-	-	2	-	-	-	2

Summative (SEE) Assessments

Sr No	Exam Name	Total Marks	Threshold in %	CO1	CO2	CO3	CO4	CO5	CO6	Avg Attainment
5	External Exam	30	50	3	2	3	3	-	-	2.75

Student % wise Distribution



Sr No	Assessment Title	Type	Total Marks	Avg Marks	Threshold in %	No of Students Scoring										Total Students Above Threshold
						0-10%	11-20%	21-30%	31-40%	41-50%	51-60%	61-70%	71-80%	81-90%	91-100%	
1	Unit 1	F	3	2.49	50	0	0	0	1	0	0	26	0	0	28	54
2	Unit 2	F	5	2.41	50	0	1	1	26	12	10	3	2	0	0	27
3	Unit 3	F	3	1.68	50	4	5	0	9	9	0	13	0	7	8	37
4	Unit 4	F	4	1.75	50	2	3	11	13	9	0	11	4	2	0	26
5	External Exam	S	30	13.37	50	4	1	0	17	18	8	4	2	1	0	17

CO Indirect Attainment

Course Exit Survey Feedback BSW SEM 6

Q1	Were you able to analyze the origin, evolution, and major milestones in the development of human rights, linking these to their impact on individuals, groups, and communities?
Scale	Strongly Agree <input type="radio"/> Agree <input type="radio"/> Disagree <input type="radio"/>
Q2	Were you able to evaluate the characteristics, classifications, and typologies of human rights to understand their application across diverse social realities?
Scale	Strongly Agree <input type="radio"/> Agree <input type="radio"/> Disagree <input type="radio"/>
Q3	Were you able to assess the human rights concerns of marginalized and vulnerable populations, exploring systemic barriers and sustainable interventions to promote social justice and equity?
Scale	Strongly Agree <input type="radio"/> Agree <input type="radio"/> Disagree <input type="radio"/>
Q4	Were you able to analyze the role of the Constitution, civil society movements, and governmental and non-governmental organizations in enforcing and safeguarding human rights, while acquiring basic para-legal skills for advocacy and action?
Scale	Strongly Agree <input type="radio"/> Agree <input type="radio"/> Disagree <input type="radio"/>

CO Attainment

CO	Direct Attainment	Indirect Attainment	Final Attainment	Target	Gap	Justification
CO1	2.59	2	2.47	2	0.47	-
CO2	2	1	1.8	2.37	-0.57	-
CO3	2.8	2	2.63	2.62	-	-
CO4	2.59	0	2.07	3	-0.93	-

Average CO Attainment : 2.24

PO Direct Attainment

Weighted Average Matrix

POs	PO1	PO2	PO3	PO4	PO5	PO6	PO7	PO8
Weighted Avg	3	2.75	2.5	2.75	2.5	2.25	2	2.25

Average CO Attainment : 2.24

POs	PO1	PO2	PO3	PO4	PO5	PO6	PO7	PO8
Calculation	3 (2.24)/ 3	2.75 (2.24)/ 3	2.5 (2.24)/ 3	2.75 (2.24)/ 3	2.5 (2.24)/ 3	2.25 (2.24)/ 3	2 (2.24)/ 3	2.25 (2.24)/ 3
Direct Attainment	2.24	2.05	1.87	2.05	1.87	1.68	1.49	1.68

COURSE OVERVIEW | BSW



Informal Labour and Informal Sector

Course Overview

Program Outcomes

- | | |
|------------|---|
| PO1 | Graduates will critically analyze social realities, understand their changing dynamics, and actively engage in processes that contribute to positive social transformation. |
| PO2 | They will demonstrate an in-depth understanding of diverse communities, their unique challenges, and systemic inequalities, and advocate for social justice in their professional practice. |
| PO3 | Graduates will apply appropriate social work methods and strategies to effectively work with individuals, groups, and communities, addressing various social issues. |
| PO4 | They will embody professional social work values and ethics, ensuring integrity, respect, and accountability in all aspects of their practice. |
| PO5 | Graduates will develop problem-solving abilities and intervention strategies tailored to the needs of marginalized and vulnerable populations. |
| PO6 | They will integrate research and evidence-based knowledge to design, implement, and evaluate social work interventions effectively. |
| PO7 | Graduates will exhibit strong communication skills and the ability to collaborate with multidisciplinary teams to address social challenges holistically. |
| PO8 | They will demonstrate a commitment to lifelong learning, staying informed about emerging trends and practices in the field of social work. |

Course Outcomes

- | | |
|-----|---|
| CO1 | To Apply various theoretical frameworks to assess the factors influencing living and working conditions in the informal sector. |
| CO2 | To Analyze the concept of migration and its social, economic, and cultural impacts on individuals and communities within the informal sector. |
| CO3 | To Evaluate how urban realities shape the living and working conditions of people in the informal sector and propose social work intervention strategies. |
| CO4 | To Create holistic intervention strategies to address challenges faced by individuals and communities in the informal sector, considering rural social realities. |

CO-PO Mapping

courseOutcomes	PO1	PO2	PO3	PO4	PO5	PO6	PO7	PO8	Average
COILIS 3.4.1	3	2	3	2	3	2	2	2	2.37
COILIS 3.4.2	3	3	2	2	2	3	2	2	2.37
COILIS 3.4.3	3	3	2	2	3	3	2	2	2.5
COILIS 3.4.4	3	3	3	3	3	3	2	3	2.87
Average	3	2.75	2.5	2.25	2.75	2.75	2	2.25	-

CO Attainment Weightages

Direct Attainment	Indirect Attainment
80 %	20 %

CO Assessment Weightages

Formative (CIE)	Summative (SEE)
40 %	60 %

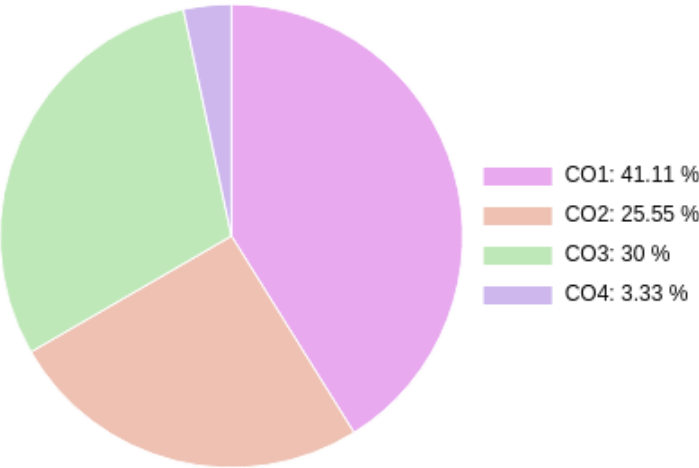
CO targets & Attainment Levels

CO	Target	Direct Attainment levels			Indirect Attainment levels		
		Level 1	Level 2	Level 3	Level 1	Level 2	Level 3
CO3	2.5	0 - 40	41 - 50	51 - 100	0 - 40	41 - 50	51 - 100
CO1	2.37	0 - 40	41 - 50	51 - 100	0 - 40	41 - 50	51 - 100
CO2	2.37	0 - 40	41 - 50	51 - 100	0 - 40	41 - 50	51 - 100
CO4	2.87	0 - 40	41 - 50	51 - 100	0 - 40	41 - 50	51 - 100

Exam Results

Exam Name	Threshold
Unit 1	50%
Unit 2	50%
Unit 3	50%
External Exam	50%

CO Coverage



COs	CO1	CO2	CO3	CO4
45	18.5	13.5	11.5	1.5
%	41.1	30.0	25.6	3.3

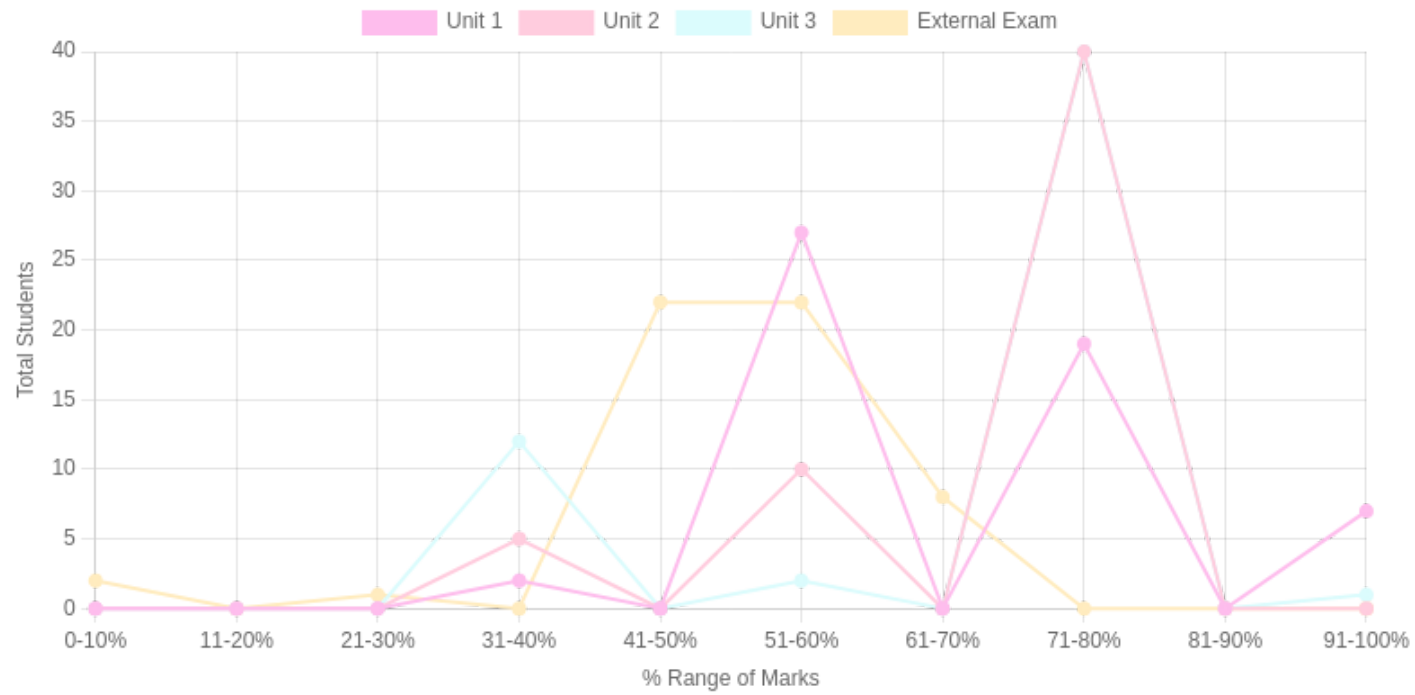
Formative (CIE) Assessments

Sr No	Exam Name	Total Marks	Threshold in %	CO1	CO2	CO3	CO4	CO5	CO6	Avg Attainment
1	Unit 1	5	50	3	-	-	-	-	-	3
2	Unit 2	5	50	-	-	3	-	-	-	3
3	Unit 3	5	50	-	-	3	-	-	-	3

Summative (SEE) Assessments

Sr No	Exam Name	Total Marks	Threshold in %	CO1	CO2	CO3	CO4	CO5	CO6	Avg Attainment
4	External Exam	30	50	2	2	1	1	-	-	1.5

Student % wise Distribution



Sr No	Assessment Title	Type	Total Marks	Avg Marks	Threshold in %	No of Students Scoring										Total Students Above Threshold
						0-10%	11-20%	21-30%	31-40%	41-50%	51-60%	61-70%	71-80%	81-90%	91-100%	
1	Unit 1	F	5	3.56	50	0	0	0	2	0	27	0	19	0	7	53
2	Unit 2	F	5	3.63	50	0	0	0	5	0	10	0	40	0	0	50
3	Unit 3	F	5	3.54	50	0	0	0	12	0	2	0	40	0	1	43
4	External Exam	S	30	15.61	50	2	0	1	0	22	22	8	0	0	0	45

CO Indirect Attainment

Course Exit Survey Feedback BSW SEM 6

Q1	Were you able to apply various theoretical frameworks to assess the factors influencing living and working conditions in the informal sector?
Scale	Strongly Agree <input type="radio"/> Agree <input type="radio"/> Disagree <input type="radio"/>
Q2	Were you able to analyze the concept of migration and its social, economic, and cultural impacts on individuals and communities within the informal sector?
Scale	Strongly Agree <input type="radio"/> Agree <input type="radio"/> Disagree <input type="radio"/>
Q3	Were you able to evaluate how urban realities shape the living and working conditions of people in the informal sector and propose social work intervention strategies?
Scale	Strongly Agree <input type="radio"/> Agree <input type="radio"/> Disagree <input type="radio"/>
Q4	Were you able to create holistic intervention strategies to address challenges faced by individuals and communities in the informal sector, considering rural social realities?
Scale	Strongly Agree <input type="radio"/> Agree <input type="radio"/> Disagree <input type="radio"/>

CO Attainment

CO	Direct Attainment	Indirect Attainment	Final Attainment	Target	Gap	Justification
CO1	2.4	3	2.52	2.37	0.14	-
CO2	1.2	3	1.56	2.37	-0.81	-
CO3	1.8	3	2.04	2.5	-0.46	-
CO4	0.6	3	1.08	2.87	-1.79	-

Average CO Attainment : 1.8

PO Direct Attainment

Weighted Average Matrix

POs	PO1	PO2	PO3	PO4	PO5	PO6	PO7	PO8
Weighted Avg	3	2.75	2.5	2.25	2.75	2.75	2	2.25

Average CO Attainment : 1.8

POs	PO1	PO2	PO3	PO4	PO5	PO6	PO7	PO8
Calculation	3 (1.8)/ 3	2.75 (1.8)/ 3	2.5 (1.8)/ 3	2.25 (1.8)/ 3	2.75 (1.8)/ 3	2.75 (1.8)/ 3	2 (1.8)/ 3	2.25 (1.8)/ 3
Direct Attainment	1.80	1.65	1.50	1.35	1.65	1.65	1.20	1.35

COURSE OVERVIEW | BSW



Integrated Social Work Practice

Course Overview

Program Outcomes

- | | |
|------------|---|
| PO1 | Graduates will critically analyze social realities, understand their changing dynamics, and actively engage in processes that contribute to positive social transformation. |
| PO2 | They will demonstrate an in-depth understanding of diverse communities, their unique challenges, and systemic inequalities, and advocate for social justice in their professional practice. |
| PO3 | Graduates will apply appropriate social work methods and strategies to effectively work with individuals, groups, and communities, addressing various social issues. |
| PO4 | They will embody professional social work values and ethics, ensuring integrity, respect, and accountability in all aspects of their practice. |
| PO5 | Graduates will develop problem-solving abilities and intervention strategies tailored to the needs of marginalized and vulnerable populations. |
| PO6 | They will integrate research and evidence-based knowledge to design, implement, and evaluate social work interventions effectively. |
| PO7 | Graduates will exhibit strong communication skills and the ability to collaborate with multidisciplinary teams to address social challenges holistically. |
| PO8 | They will demonstrate a commitment to lifelong learning, staying informed about emerging trends and practices in the field of social work. |

Course Outcomes

- | | |
|------------|---|
| CO1 | To apply crisis intervention techniques, multicultural competence, and ethical decision-making frameworks in real-world social work settings. |
| CO2 | To analyze the relevance and applicability of various social work practice models, including ISTT, ISWP, Strength-Based, and Solution-Oriented approaches, in addressing diverse social issues. |
| CO3 | To evaluate the effectiveness of integrated social work interventions in planning, managing, and assessing macro-level social work practices while upholding ethical principles. |
| CO4 | To create intervention strategies incorporating Strength-Based and Solution-Oriented models to address the needs of marginalized and vulnerable populations. |

CO-PO Mapping

courseOutcomes	PO1	PO2	PO3	PO4	PO5	PO6	PO7	PO8	Average
COISWP 6.2.1	3	3	3	3	3	2	2	2	2.62
COISWP 6.2.2	3	3	2	2	2	3	2	2	2.37
COISWP 6.2.3	3	2	2	3	2	3	2	2	2.37
COISWP 6.2.4	3	3	3	3	3	3	2	3	2.87
Average	3	2.75	2.5	2.75	2.5	2.75	2	2.25	-

CO Attainment Weightages

Direct Attainment	Indirect Attainment
80 %	20 %

CO Assessment Weightages

Formative (CIE)	Summative (SEE)
40 %	60 %

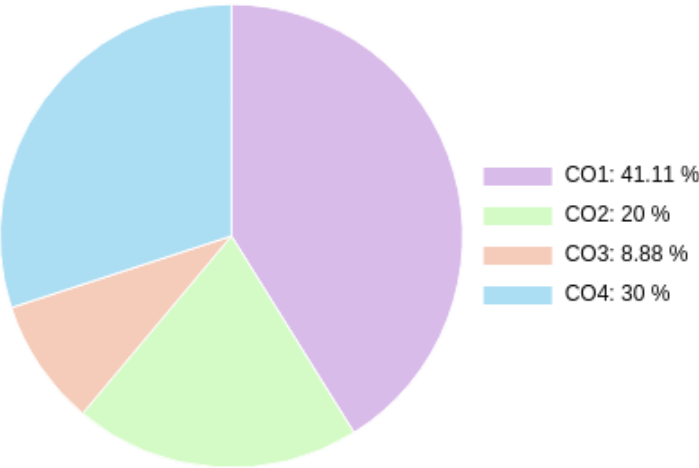
CO targets & Attainment Levels

CO	Target	Direct Attainment levels			Indirect Attainment levels		
		Level 1	Level 2	Level 3	Level 1	Level 2	Level 3
CO4	2.87	0 - 40	41 - 50	51 - 100	0 - 40	41 - 50	51 - 100
CO1	2.62	0 - 40	41 - 50	51 - 100	0 - 40	41 - 50	51 - 100
CO2	2.37	0 - 40	41 - 50	51 - 100	0 - 40	41 - 50	51 - 100
CO3	2.37	0 - 40	41 - 50	51 - 100	0 - 40	41 - 50	51 - 100

Exam Results

Exam Name	Threshold
Unit 1	50%
Unit 2	50%
Unit 3	50%
Unit 4	50%
External Exam	50%

CO Coverage



COs	CO1	CO2	CO3	CO4
45	13.5	18.5	9.0	4.0
%	30.0	41.1	20.0	8.9

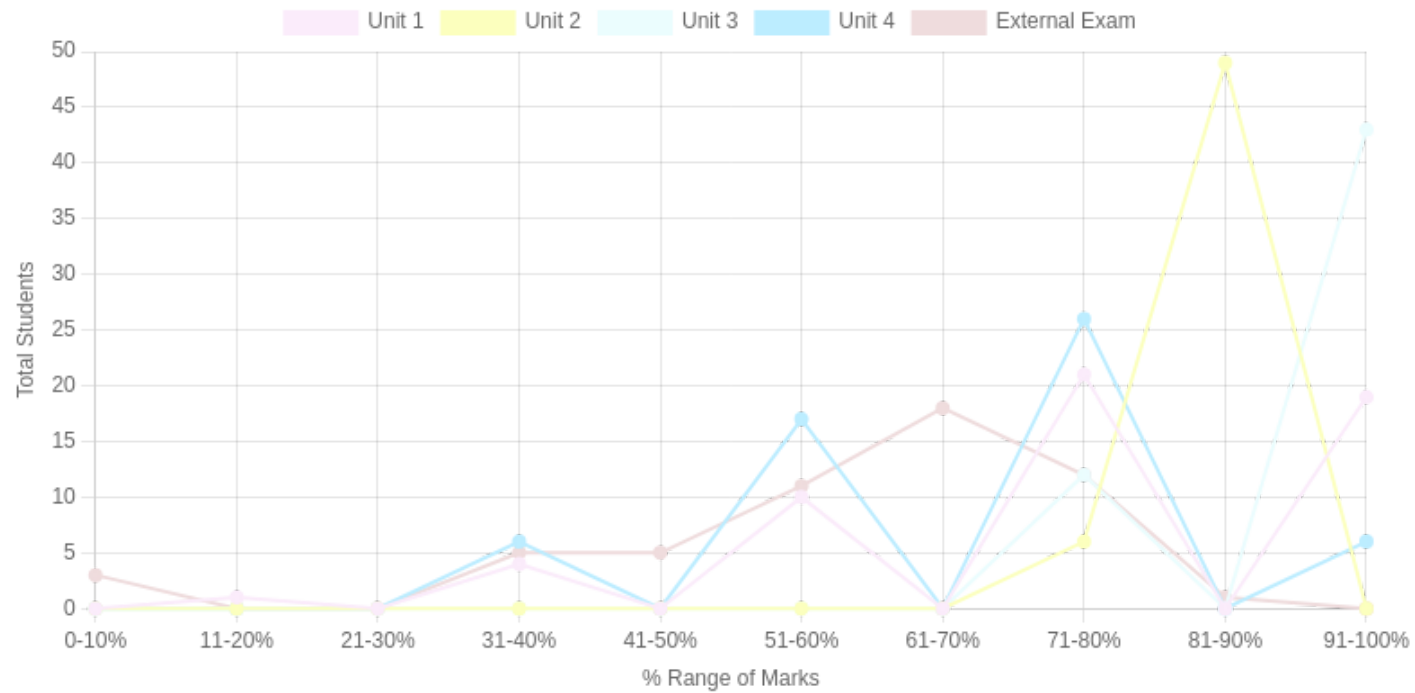
Formative (CIE) Assessments

Sr No	Exam Name	Total Marks	Threshold in %	CO1	CO2	CO3	CO4	CO5	CO6	Avg Attainment
1	Unit 1	5	50	-	3	-	-	-	-	3
2	Unit 2	5	50	-	-	3	-	-	-	3
3	Unit 3	2.5	50	-	-	3	-	-	-	3
4	Unit 4	2.5	50	-	-	-	3	-	-	3

Summative (SEE) Assessments

Sr No	Exam Name	Total Marks	Threshold in %	CO1	CO2	CO3	CO4	CO5	CO6	Avg Attainment
5	External Exam	30	50	3	3	3	3	-	-	3

Student % wise Distribution



Sr No	Assessment Title	Type	Total Marks	Avg Marks	Threshold in %	No of Students Scoring										Total Students Above Threshold
						0-10%	11-20%	21-30%	31-40%	41-50%	51-60%	61-70%	71-80%	81-90%	91-100%	
1	Unit 1	F	5	3.96	50	0	1	0	4	0	10	0	21	0	19	50
2	Unit 2	F	5	4.44	50	0	0	0	0	0	0	0	6	49	0	55
3	Unit 3	F	2.5	2.39	50	0	0	0	0	0	0	0	12	0	43	55
4	Unit 4	F	2.5	1.79	50	0	0	0	6	0	17	0	26	0	6	49
5	External Exam	S	30	17.74	50	3	0	0	5	5	11	18	12	1	0	45

CO Indirect Attainment

Course Exit Survey Feedback BSW SEM 6

Q1	Were you able to apply crisis intervention techniques, multicultural competence, and ethical decision-making frameworks in real-world social work settings?
Scale	Strongly Agree <input type="radio"/> Agree <input type="radio"/> Disagree <input type="radio"/>
Q2	Were you able to analyze the relevance and applicability of various social work practice models, including ISTT, ISWP, Strength-Based, and Solution-Oriented approaches, in addressing diverse social issues?
Scale	Strongly Agree <input type="radio"/> Agree <input type="radio"/> Disagree <input type="radio"/>
Q3	Were you able to evaluate the effectiveness of integrated social work interventions in planning, managing, and assessing macro-level social work practices while upholding ethical principles?
Scale	Strongly Agree <input type="radio"/> Agree <input type="radio"/> Disagree <input type="radio"/>
Q4	Were you able to create intervention strategies incorporating Strength-Based and Solution-Oriented models to address the needs of marginalized and vulnerable populations?
Scale	Strongly Agree <input type="radio"/> Agree <input type="radio"/> Disagree <input type="radio"/>

CO Attainment

CO	Direct Attainment	Indirect Attainment	Final Attainment	Target	Gap	Justification
CO1	1.79	3	2.03	2.62	-0.59	-
CO2	3	3	3	2.37	0.62	-
CO3	2.4	0	1.92	2.37	-0.45	-
CO4	3	3	3	2.87	0.12	-

Average CO Attainment : 2.48

PO Direct Attainment

Weighted Average Matrix

POs	PO1	PO2	PO3	PO4	PO5	PO6	PO7	PO8
Weighted Avg	3	2.75	2.5	2.75	2.5	2.75	2	2.25

Average CO Attainment : 2.48

POs	PO1	PO2	PO3	PO4	PO5	PO6	PO7	PO8
Calculation	3 (2.48)/ 3	2.75 (2.48)/ 3	2.5 (2.48)/ 3	2.75 (2.48)/ 3	2.5 (2.48)/ 3	2.75 (2.48)/ 3	2 (2.48)/ 3	2.25 (2.48)/ 3
Direct Attainment	2.48	2.27	2.07	2.27	2.07	2.27	1.65	1.86

COURSE OVERVIEW | BSW



Peace Education

Course Overview

Program Outcomes

- | | |
|------------|---|
| PO1 | Graduates will critically analyze social realities, understand their changing dynamics, and actively engage in processes that contribute to positive social transformation. |
| PO2 | They will demonstrate an in-depth understanding of diverse communities, their unique challenges, and systemic inequalities, and advocate for social justice in their professional practice. |
| PO3 | Graduates will apply appropriate social work methods and strategies to effectively work with individuals, groups, and communities, addressing various social issues. |
| PO4 | They will embody professional social work values and ethics, ensuring integrity, respect, and accountability in all aspects of their practice. |
| PO5 | Graduates will develop problem-solving abilities and intervention strategies tailored to the needs of marginalized and vulnerable populations. |
| PO6 | They will integrate research and evidence-based knowledge to design, implement, and evaluate social work interventions effectively. |
| PO7 | Graduates will exhibit strong communication skills and the ability to collaborate with multidisciplinary teams to address social challenges holistically. |
| PO8 | They will demonstrate a commitment to lifelong learning, staying informed about emerging trends and practices in the field of social work. |

Course Outcomes

CO1

To apply conflict resolution techniques and social work methods to address real-world conflicts, such as riots, forced migration, and refugee crises, fostering peaceful coexistence.

CO2

To analyze key concepts of peace and conflict within the Indian socio-economic and political context, assessing their historical and contemporary relevance.

CO3

To evaluate the role of communalism, terrorism, and radicalization in shaping conflicts and peace efforts, and critique the effectiveness of de-radicalization strategies.

CO4

To create innovative interventions, policies, or advocacy campaigns that promote peacebuilding through collaboration with national, international, and civil society organizations.

CO-PO Mapping

courseOutcomes	PO1	PO2	PO3	PO4	PO5	PO6	PO7	PO8	Average
COPEED 6.7.1	3	2	3	2	3	2	2	2	2.37
COPEED 6.7.2	3	3	2	2	2	2	2	2	2.25
COPEED 6.7.3	3	3	2	3	2	3	2	2	2.5
COPEED 6.7.4	3	3	3	3	3	3	3	3	3
Average	3	2.75	2.5	2.5	2.5	2.5	2.25	2.25	-

CO Attainment Weightages

Direct Attainment	Indirect Attainment
80 %	20 %

CO Assessment Weightages

Formative (CIE)	Summative (SEE)
40 %	60 %

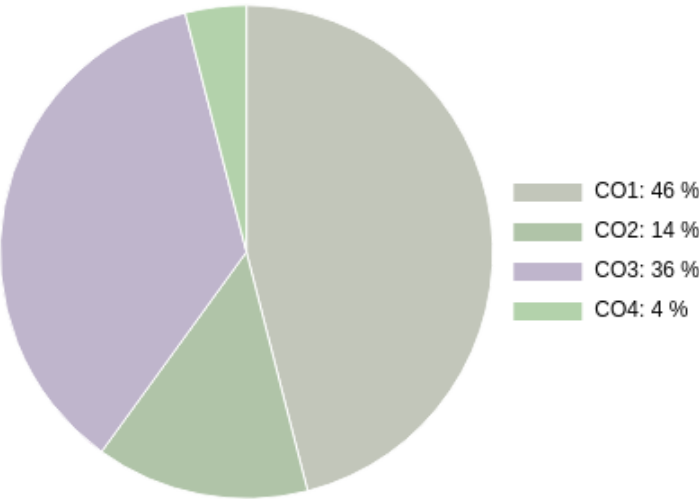
CO targets & Attainment Levels

CO	Target	Direct Attainment levels			Indirect Attainment levels		
		Level 1	Level 2	Level 3	Level 1	Level 2	Level 3
CO1	2.37	0 - 40	41 - 50	51 - 100	0 - 40	41 - 50	51 - 100
CO3	2.5	0 - 40	41 - 50	51 - 100	0 - 40	41 - 50	51 - 100
CO4	3	0 - 40	41 - 50	51 - 100	0 - 40	41 - 50	51 - 100
CO2	2.25	0 - 40	41 - 50	51 - 100	0 - 40	41 - 50	51 - 100

Exam Results

Exam Name	Threshold
Unit 1	50%
Unit 3	50%
External Exam	50%

CO Coverage



COs	CO1	CO2	CO3	CO4
37.5	17.3	13.5	5.3	1.5
%	46.0	36.0	14.0	4.0

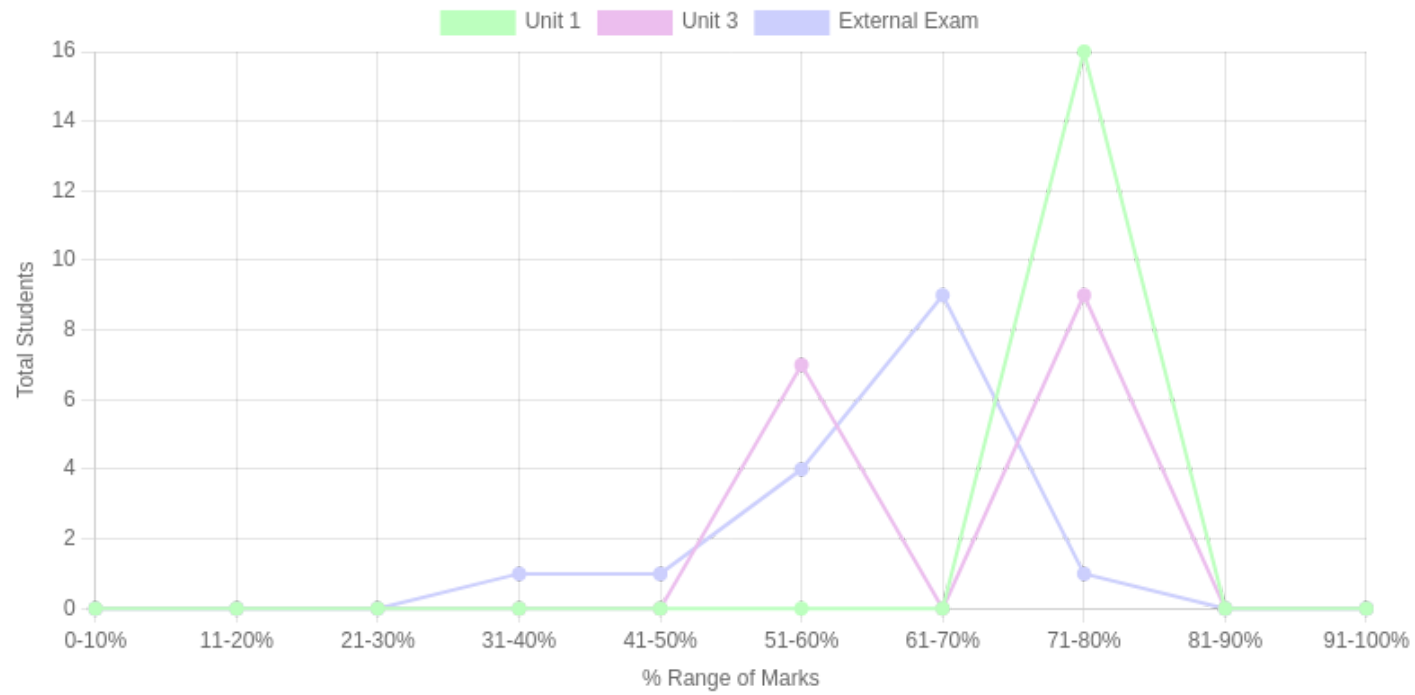
Formative (CIE) Assessments

Sr No	Exam Name	Total Marks	Threshold in %	CO1	CO2	CO3	CO4	CO5	CO6	Avg Attainment
1	Unit 1	3.75	50	3	-	-	-	-	-	3
2	Unit 3	3.75	50	-	-	3	-	-	-	3

Summative (SEE) Assessments

Sr No	Exam Name	Total Marks	Threshold in %	CO1	CO2	CO3	CO4	CO5	CO6	Avg Attainment
3	External Exam	30	50	3	3	3	3	-	-	3

Student % wise Distribution



Sr No	Assessment Title	Type	Total Marks	Avg Marks	Threshold in %	No of Students Scoring										Total Students Above Threshold
						0-10%	11-20%	21-30%	31-40%	41-50%	51-60%	61-70%	71-80%	81-90%	91-100%	
1	Unit 1	F	3.75	3	50	0	0	0	0	0	0	0	16	0	0	16
2	Unit 3	F	3.75	2.67	50	0	0	0	0	0	7	0	9	0	0	16
3	External Exam	S	30	18.25	50	0	0	0	1	1	4	9	1	0	0	14

CO Indirect Attainment

Course Exit Survey Feedback BSW SEM 6

Q1	Were you able to apply conflict resolution techniques and social work methods to address real-world conflicts, such as riots, forced migration, and refugee crises, fostering peaceful coexistence?
Scale	Strongly Agree <input type="radio"/> Agree <input type="radio"/> Disagree <input type="radio"/>
Q2	Were you able to analyze key concepts of peace and conflict within the Indian socio-economic and political context, assessing their historical and contemporary relevance?
Scale	Strongly Agree <input type="radio"/> Agree <input type="radio"/> Disagree <input type="radio"/>
Q3	Were you able to evaluate the role of communalism, terrorism, and radicalization in shaping conflicts and peace efforts, and critique the effectiveness of de-radicalization strategies?
Scale	Strongly Agree <input type="radio"/> Agree <input type="radio"/> Disagree <input type="radio"/>
Q4	Were you able to create innovative interventions, policies, or advocacy campaigns that promote peacebuilding through collaboration with national, international, and civil society organizations?
Scale	Strongly Agree <input type="radio"/> Agree <input type="radio"/> Disagree <input type="radio"/>

CO Attainment

CO	Direct Attainment	Indirect Attainment	Final Attainment	Target	Gap	Justification
CO1	3	3	3	2.37	0.62	-
CO2	1.79	0	1.43	2.25	-0.82	-
CO3	3	3	3	2.5	0.5	-
CO4	1.79	0	1.43	3	-1.57	-

Average CO Attainment : 2.21

PO Direct Attainment

Weighted Average Matrix

POs	PO1	PO2	PO3	PO4	PO5	PO6	PO7	PO8
Weighted Avg	3	2.75	2.5	2.5	2.5	2.5	2.25	2.25

Average CO Attainment : 2.21

POs	PO1	PO2	PO3	PO4	PO5	PO6	PO7	PO8
Calculation	3 (2.21)/ 3	2.75 (2.21)/ 3	2.5 (2.21)/ 3	2.5 (2.21)/ 3	2.5 (2.21)/ 3	2.5 (2.21)/ 3	2.25 (2.21)/ 3	2.25 (2.21)/ 3
Direct Attainment	2.21	2.03	1.84	1.84	1.84	1.84	1.66	1.66

COURSE OVERVIEW | BSW