



Social Inclusion and Exclusion

Course Overview

Program Outcomes

- | | |
|------------|---|
| PO1 | Graduates will critically analyze social realities, understand their changing dynamics, and actively engage in processes that contribute to positive social transformation. |
| PO2 | They will demonstrate an in-depth understanding of diverse communities, their unique challenges, and systemic inequalities, and advocate for social justice in their professional practice. |
| PO3 | Graduates will apply appropriate social work methods and strategies to effectively work with individuals, groups, and communities, addressing various social issues. |
| PO4 | They will embody professional social work values and ethics, ensuring integrity, respect, and accountability in all aspects of their practice. |
| PO5 | Graduates will develop problem-solving abilities and intervention strategies tailored to the needs of marginalized and vulnerable populations. |
| PO6 | They will integrate research and evidence-based knowledge to design, implement, and evaluate social work interventions effectively. |
| PO7 | Graduates will exhibit strong communication skills and the ability to collaborate with multidisciplinary teams to address social challenges holistically. |
| PO8 | They will demonstrate a commitment to lifelong learning, staying informed about emerging trends and practices in the field of social work. |

Course Outcomes

- | | |
|-----|---|
| CO1 | Recalling definitions and concepts of social exclusion and inclusion. |
| CO2 | Understanding the socio-cultural, economic, and political dimensions of exclusion. |
| CO3 | Analyzing the struggles and challenges faced by excluded communities. |
| CO4 | Applying knowledge of constitutional provisions and policies for inclusive development. |

CO-PO Mapping

courseOutcomes	PO1	PO2	PO3	PO4	PO5	PO6	PO7	PO8	Average
COSIE 5.7.1	1	1	1	1	1	1	1	1	1
COSIE 5.7.2	2	2	2	2	2	2	2	2	2
COSIE 5.7.3	3	3	3	2	3	3	3	3	2.87
COSIE 5.7.4	3	3	3	3	3	3	3	3	3
Average	2.25	2.25	2.25	2	2.25	2.25	2.25	2.25	-

CO Attainment Weightages

Direct Attainment	Indirect Attainment
80 %	20 %

CO Assessment Weightages

Formative (CIE)	Summative (SEE)
40 %	60 %

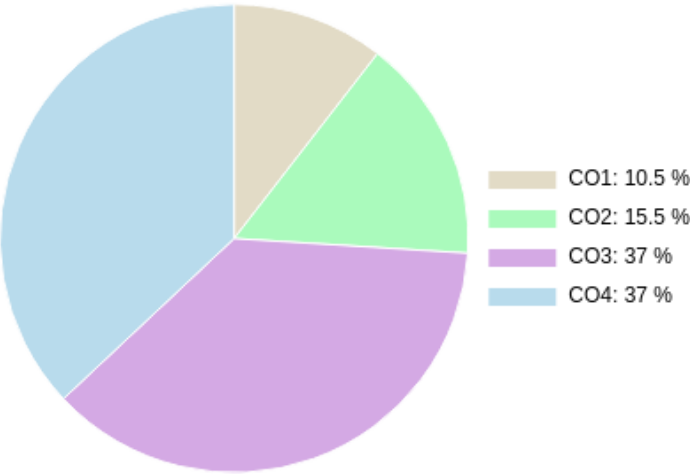
CO targets & Attainment Levels

CO	Target	Direct Attainment levels			Indirect Attainment levels		
		Level 1	Level 2	Level 3	Level 1	Level 2	Level 3
CO1	1	0 - 40	41 - 50	51 - 100	0 - 40	41 - 50	51 - 100
CO2	2	0 - 40	41 - 50	51 - 100	0 - 40	41 - 50	51 - 100
CO3	2.87	0 - 40	41 - 50	51 - 100	0 - 40	41 - 50	51 - 100
CO4	3	0 - 40	41 - 50	51 - 100	0 - 40	41 - 50	51 - 100

Exam Results

Exam Name	Threshold
CLASS PARTICIPATION	50%
ATTENDANCE	50%
UNIT 1/Basic Concepts of Social Exclusion and Inclusion	50%
UNIT 2/Types of Excluded communities	50%
UNIT 3/Policies for inclusion of excluded communities	50%
Unit 4/Social Movements for inclusion	50%
External Exam - SEM 5 - 24-25	50%

CO Coverage



COs	CO1	CO2	CO3	CO4
50	18.5	18.5	5.3	7.8
%	37.0	37.0	10.5	15.5

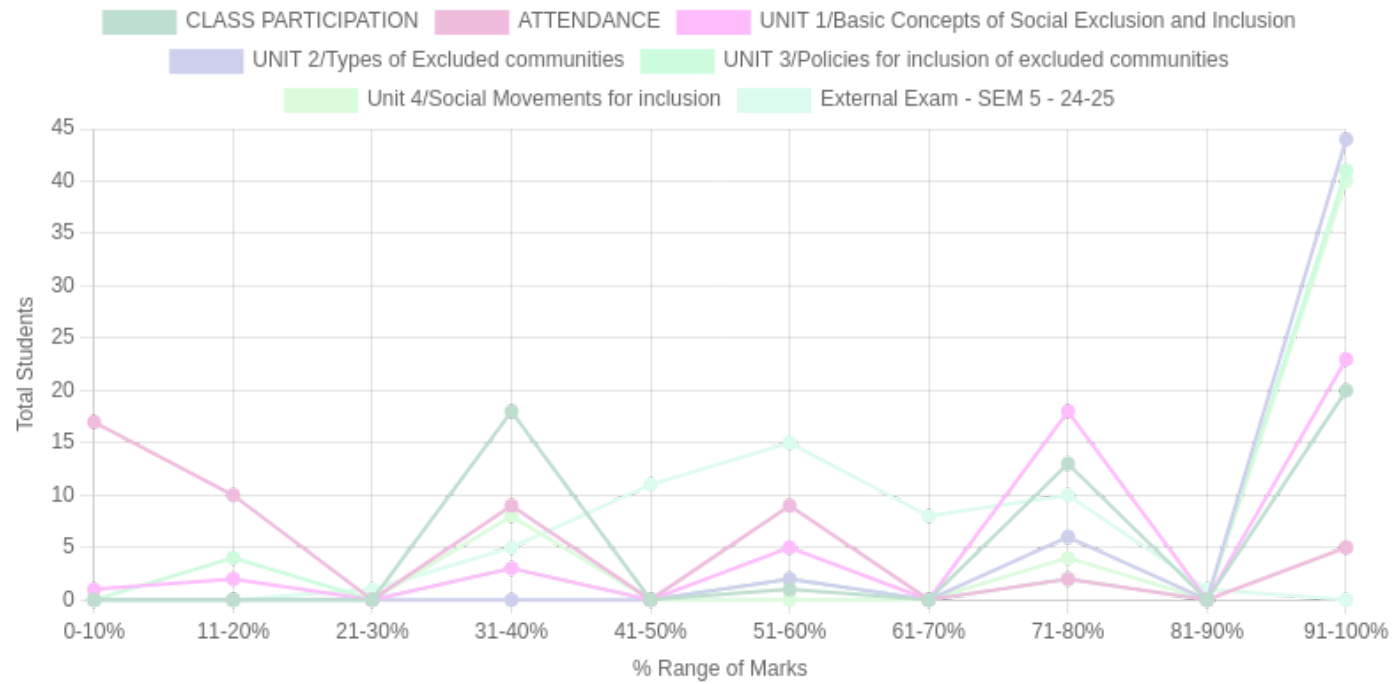
Formative (CIE) Assessments

Sr No	Exam Name	Date	Total Marks	Threshold in %	CO1	CO2	CO3	CO4	CO5	CO6	Avg Attainment
1	CLASS PARTICIPATION	10/10/2024	2.5	50	-	-	3	3	-	-	3
2	ATTENDANCE	08/11/2024	2.5	50	-	-	1	1	-	-	1
3	UNIT 1/Basic Concepts of Social Exclusion and Inclusion	10/11/2024	5	50	3	3	-	-	-	-	3
4	UNIT 2/Types of Excluded communities	14/11/2024	5	50	3	3	-	-	-	-	3
5	UNIT 3/Policies for inclusion of excluded communities	14/11/2024	2.5	50	-	-	3	3	-	-	3
6	Unit 4/Social Movements for inclusion	14/11/2024	2.5	50	-	-	-	3	-	-	3

Summative (SEE) Assessments

Sr No	Exam Name	Date	Total Marks	Threshold in %	CO1	CO2	CO3	CO4	CO5	CO6	Avg Attainment
7	External Exam - SEM 5 - 24-25	20/10/2024	30	50	3	3	3	3	-	-	3

Student % wise Distribution



Sr No	Assessment Title	Type	Total Marks	Avg Marks	Threshold in %	No of Students Scoring										Total Students Above Threshold
						0-10%	11-20%	21-30%	31-40%	41-50%	51-60%	61-70%	71-80%	81-90%	91-100%	
1	CLASS PARTICIPATION	F	2.5	1.83	50	0	0	0	18	0	1	0	13	0	20	34
2	ATTENDANCE	F	2.5	0.84	50	17	10	0	9	0	9	0	2	0	5	16
3	UNIT 1/Basic Concepts of Social Exclusion and Inclusion	F	5	4.03	50	1	2	0	3	0	5	0	18	0	23	46
4	UNIT 2/Types of Excluded communities	F	5	4.8	50	0	0	0	0	0	2	0	6	0	44	52
5	UNIT 3/Policies for inclusion of excluded communities	F	2.5	2.2	50	0	4	0	3	0	2	0	2	0	41	45
6	Unit 4/Social Movements for inclusion	F	2.5	2.23	50	0	0	0	8	0	0	0	4	0	40	44
7	External Exam - SEM 5 - 24-25	S	30	17.44	50	0	0	1	5	11	15	8	10	1	0	37

CO Indirect Attainment

Course Exit Survey - BSW - SEM 5

Q1	Recalling definitions and concepts of social exclusion and inclusion.
Scale	GOOD <input type="radio"/> BETTER <input type="radio"/> BEST <input type="radio"/>
Q2	Understanding the socio-cultural, economic, and political dimensions of exclusion.
Scale	GOOD <input type="radio"/> BETTER <input type="radio"/> BEST <input type="radio"/>
Q3	Analyzing the struggles and challenges faced by excluded communities.
Scale	GOOD <input type="radio"/> BETTER <input type="radio"/> BEST <input type="radio"/>
Q4	Applying knowledge of constitutional provisions and policies for inclusive development.
Scale	GOOD <input type="radio"/> BETTER <input type="radio"/> BEST <input type="radio"/>

CO Attainment

CO	Direct Attainment	Indirect Attainment	Final Attainment	Target	Gap	Justification
CO1	3	2	2.8	1	1.79	-
CO2	3	3	3	2	1	-
CO3	2.73	3	2.78	2.87	-0.09	-
CO4	2.8	2	2.63	3	-0.37	-

Average CO Attainment : 2.8

PO Direct Attainment

Weighted Average Matrix

POs	PO1	PO2	PO3	PO4	PO5	PO6	PO7	PO8
Weighted Avg	2.25	2.25	2.25	2	2.25	2.25	2.25	2.25

Average CO Attainment : 2.8

POs	PO1	PO2	PO3	PO4	PO5	PO6	PO7	PO8
Calculation	2.25 (2.8)/ 3	2.25 (2.8)/ 3	2.25 (2.8)/ 3	2 (2.8)/ 3	2.25 (2.8)/ 3	2.25 (2.8)/ 3	2.25 (2.8)/ 3	2.25 (2.8)/ 3
Direct Attainment	2.10	2.10	2.10	1.87	2.10	2.10	2.10	2.10

COURSE OVERVIEW | BSW



Ageing Studies

Course Overview

Program Outcomes

- | | |
|------------|---|
| PO1 | Graduates will critically analyze social realities, understand their changing dynamics, and actively engage in processes that contribute to positive social transformation. |
| PO2 | They will demonstrate an in-depth understanding of diverse communities, their unique challenges, and systemic inequalities, and advocate for social justice in their professional practice. |
| PO3 | Graduates will apply appropriate social work methods and strategies to effectively work with individuals, groups, and communities, addressing various social issues. |
| PO4 | They will embody professional social work values and ethics, ensuring integrity, respect, and accountability in all aspects of their practice. |
| PO5 | Graduates will develop problem-solving abilities and intervention strategies tailored to the needs of marginalized and vulnerable populations. |
| PO6 | They will integrate research and evidence-based knowledge to design, implement, and evaluate social work interventions effectively. |
| PO7 | Graduates will exhibit strong communication skills and the ability to collaborate with multidisciplinary teams to address social challenges holistically. |
| PO8 | They will demonstrate a commitment to lifelong learning, staying informed about emerging trends and practices in the field of social work. |

Course Outcomes

- | | |
|-----|---|
| CO1 | Identifying demographic profiles and factors affecting elderly populations. |
| CO2 | Understanding theoretical perspectives on ageing (biological, psychological, social). |
| CO3 | Analyzing factors such as health, finance, and social determinants affecting the elderly. |
| CO4 | Applying intervention skills for elderly care, including dementia care and grief work. |

CO-PO Mapping

courseOutcomes	PO1	PO2	PO3	PO4	PO5	PO6	PO7	PO8	Average
COAGST 5.5.1	1	1	1	1	1	1	1	1	1
COAGST 5.5.2	2	2	2	2	2	2	2	2	2
COAGST 5.5.3	3	3	3	2	3	3	3	2	2.75
COAGST 5.5.4	3	3	3	3	3	3	3	3	3
Average	2.25	2.25	2.25	2	2.25	2.25	2.25	2	-

CO Attainment Weightages

Direct Attainment	Indirect Attainment
80 %	20 %

CO Assessment Weightages

Formative (CIE)	Summative (SEE)
40 %	60 %

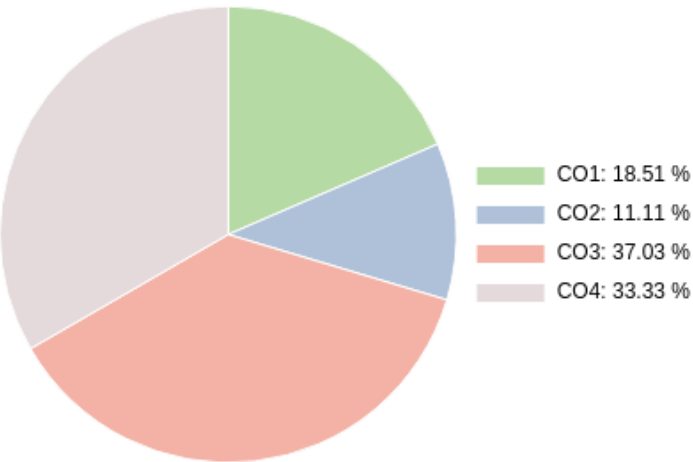
CO targets & Attainment Levels

CO	Target	Direct Attainment levels			Indirect Attainment levels		
		Level 1	Level 2	Level 3	Level 1	Level 2	Level 3
CO1	1	0 - 40	41 - 50	51 - 100	0 - 40	41 - 50	51 - 100
CO2	2	0 - 40	41 - 50	51 - 100	0 - 40	41 - 50	51 - 100
CO3	2.75	0 - 40	41 - 50	51 - 100	0 - 40	41 - 50	51 - 100
CO4	3	0 - 40	41 - 50	51 - 100	0 - 40	41 - 50	51 - 100

Exam Results

Exam Name	Threshold
CLASS PARTICIPATION	50%
ATTENDANCE	50%
UNIT 1/Ageism	50%
UNIT 2/Issues of Elderly	50%
Unit 4/National Policy for Older persons	50%
External Exam - SEM 5 - 24-25	50%
Internal Assessment Overall	%

CO Coverage



COs	CO1	CO2	CO3	CO4
67.5	25.0	22.5	12.5	7.5
%	37.0	33.3	18.5	11.1

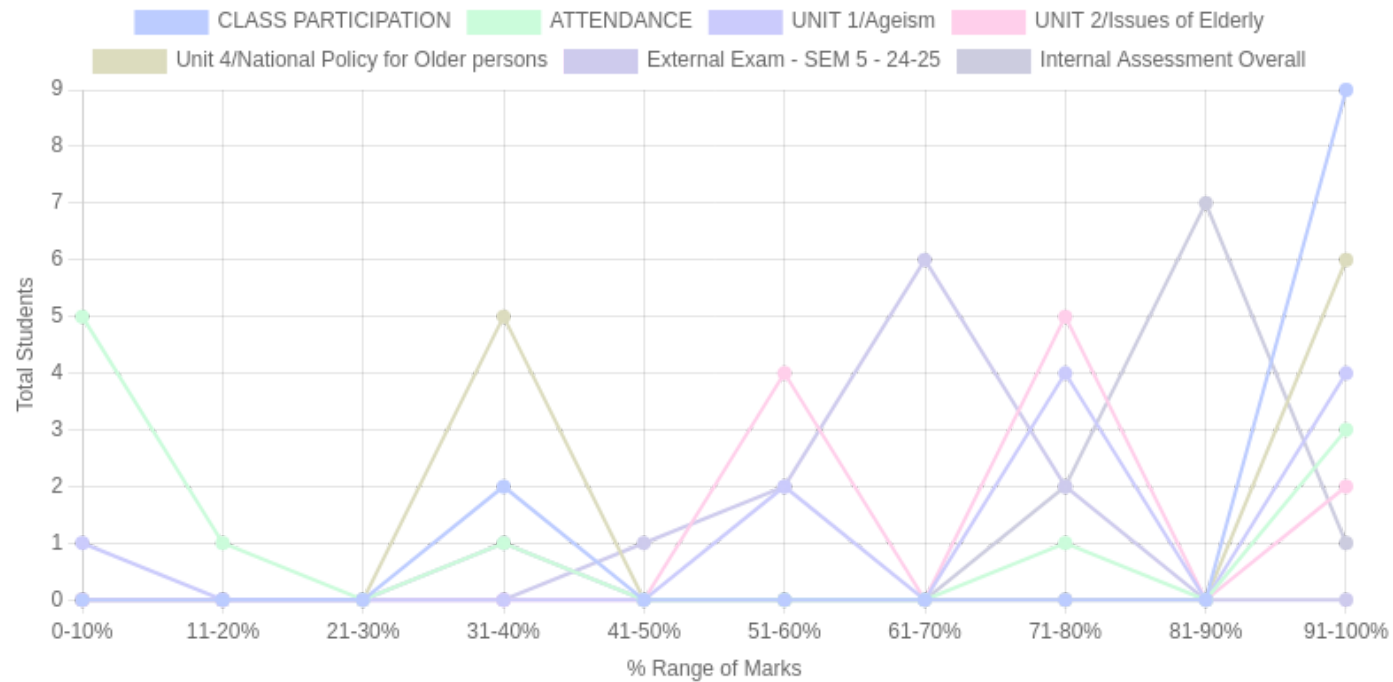
Formative (CIE) Assessments

Sr No	Exam Name	Date	Total Marks	Threshold in %	CO1	CO2	CO3	CO4	CO5	CO6	Avg Attainment
1	CLASS PARTICIPATION	10/10/2024	2.5	50	-	-	3	3	-	-	3
2	ATTENDANCE	08/11/2024	2.5	50	-	-	1	1	-	-	1
3	UNIT 1/Ageism	20/11/2024	5	50	3	-	-	-	-	-	3
4	UNIT 2/Issues of Elderly	06/11/2024	5	50	-	-	3	-	-	-	3
5	Unit 4/National Policy for Older persons	05/11/2024	2.5	50	-	3	-	-	-	-	3
7	Internal Assessment Overall	14/02/2025	20		3	3	3	3	-	-	3

Summative (SEE) Assessments

Sr No	Exam Name	Date	Total Marks	Threshold in %	CO1	CO2	CO3	CO4	CO5	CO6	Avg Attainment
6	External Exam - SEM 5 - 24-25	20/10/2024	30	50	3	3	-	-	-	-	3

Student % wise Distribution



Sr No	Assessment Title	Type	Total Marks	Avg Marks	Threshold in %	No of Students Scoring										Total Students Above Threshold
						0-10%	11-20%	21-30%	31-40%	41-50%	51-60%	61-70%	71-80%	81-90%	91-100%	
1	CLASS PARTICIPATION	F	2.5	2.22	50	0	0	0	2	0	0	0	0	0	9	9
2	ATTENDANCE	F	2.5	1	50	5	1	0	1	0	0	0	1	0	3	4
3	UNIT 1/Ageism	F	5	3.81	50	1	0	0	0	0	2	0	4	0	4	10
4	UNIT 2/Issues of Elderly	F	5	3.81	50	0	0	0	0	0	4	0	5	0	2	11
5	Unit 4/National Policy for Older persons	F	2.5	1.81	50	0	0	0	5	0	0	0	0	0	6	6
6	External Exam - SEM 5 - 24-25	S	30	19.13	50	0	0	0	0	1	2	6	2	0	0	11
7	Internal Assessment Overall	F	20	16.36		0	0	0	1	0	0	0	2	7	1	11

CO Indirect Attainment

Course Exit Survey - BSW - SEM 5

Q1	Identifying demographic profiles and factors affecting elderly populations.
Scale	GOOD <input type="radio"/> BETTER <input type="radio"/> BEST <input type="radio"/>
Q2	Understanding theoretical perspectives on ageing (biological, psychological, social).
Scale	GOOD <input type="radio"/> BETTER <input type="radio"/> BEST <input type="radio"/>
Q3	Analyzing factors such as health, finance, and social determinants affecting the elderly.
Scale	GOOD <input type="radio"/> BETTER <input type="radio"/> BEST <input type="radio"/>
Q4	Applying intervention skills for elderly care, including dementia care and grief work.
Scale	GOOD <input type="radio"/> BETTER <input type="radio"/> BEST <input type="radio"/>

CO Attainment

CO	Direct Attainment	Indirect Attainment	Final Attainment	Target	Gap	Justification
CO1	2.4	1	2.12	1	1.12	-
CO2	2.4	3	2.52	2	0.52	-
CO3	0.7	3	1.16	2.75	-1.59	-
CO4	0.53	2	0.82	3	-2.18	-

Average CO Attainment : 1.65

PO Direct Attainment

Weighted Average Matrix

POs	PO1	PO2	PO3	PO4	PO5	PO6	PO7	PO8
Weighted Avg	2.25	2.25	2.25	2	2.25	2.25	2.25	2

Average CO Attainment : 1.65

POs	PO1	PO2	PO3	PO4	PO5	PO6	PO7	PO8
Calculation	$2.25 (1.65)/ 3$	$2.25 (1.65)/ 3$	$2.25 (1.65)/ 3$	$2 (1.65)/ 3$	$2.25 (1.65)/ 3$	$2.25 (1.65)/ 3$	$2.25 (1.65)/ 3$	$2 (1.65)/ 3$
Direct Attainment	1.24	1.24	1.24	1.10	1.24	1.24	1.24	1.10

COURSE OVERVIEW | BSW



Child Rights and Protection

Course Overview

Program Outcomes

- | | |
|------------|---|
| PO1 | Graduates will critically analyze social realities, understand their changing dynamics, and actively engage in processes that contribute to positive social transformation. |
| PO2 | They will demonstrate an in-depth understanding of diverse communities, their unique challenges, and systemic inequalities, and advocate for social justice in their professional practice. |
| PO3 | Graduates will apply appropriate social work methods and strategies to effectively work with individuals, groups, and communities, addressing various social issues. |
| PO4 | They will embody professional social work values and ethics, ensuring integrity, respect, and accountability in all aspects of their practice. |
| PO5 | Graduates will develop problem-solving abilities and intervention strategies tailored to the needs of marginalized and vulnerable populations. |
| PO6 | They will integrate research and evidence-based knowledge to design, implement, and evaluate social work interventions effectively. |
| PO7 | Graduates will exhibit strong communication skills and the ability to collaborate with multidisciplinary teams to address social challenges holistically. |
| PO8 | They will demonstrate a commitment to lifelong learning, staying informed about emerging trends and practices in the field of social work. |

Course Outcomes

- | | |
|------------|--|
| CO1 | Recalling the definitions of child rights and the legal framework. |
| CO2 | Understanding the situational analysis of child rights in the context of caste, class, religion, and gender. |
| CO3 | Analyzing issues related to child abuse, neglect, and exploitation. |
| CO4 | Applying knowledge of laws for child protection. |

CO-PO Mapping

courseOutcomes	PO1	PO2	PO3	PO4	PO5	PO6	PO7	PO8	Average
COCRPR 5.6.1	1	1	1	2	2	1	1	2	1.37
COCRPR 5.6.2	2	2	2	2	3	2	3	2	2.25
COCRPR 5.6.3	3	3	3	2	3	3	3	3	2.87
COCRPR 5.6.4	3	3	3	3	3	3	3	3	3
Average	2.25	2.25	2.25	2.25	2.75	2.25	2.5	2.5	-

CO Attainment Weightages

Direct Attainment	Indirect Attainment
80 %	20 %

CO Assessment Weightages

Formative (CIE)	Summative (SEE)
40 %	60 %

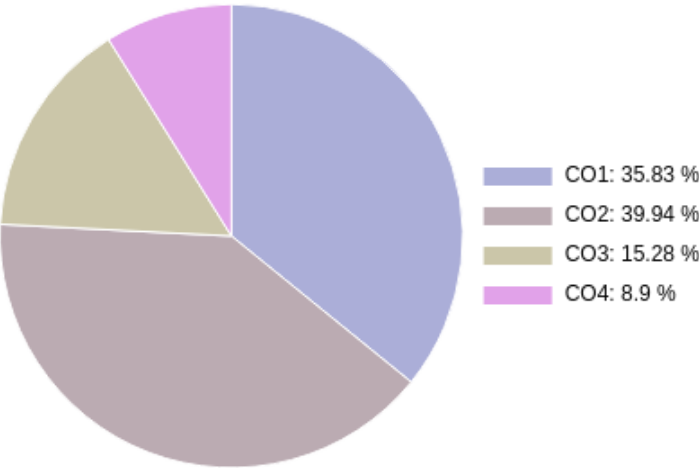
CO targets & Attainment Levels

CO	Target	Direct Attainment levels			Indirect Attainment levels		
		Level 1	Level 2	Level 3	Level 1	Level 2	Level 3
CO1	1.37	0 - 40	41 - 50	51 - 100	0 - 40	41 - 50	51 - 100
CO2	2.25	0 - 40	41 - 50	51 - 100	0 - 40	41 - 50	51 - 100
CO3	2.87	0 - 40	41 - 50	51 - 100	0 - 40	41 - 50	51 - 100
CO4	3	0 - 40	41 - 50	51 - 100	0 - 40	41 - 50	51 - 100

Exam Results

Exam Name	Threshold
External Exam - SEM 5 - 24-25	50%
UNIT 1/ MCQ	50%
Unit 1/Child Rights	50%
unit 3/POCSO	50%
unit 4/Adoption	50%
unit 2/assignment	50%
Class Participation	50%
Attendance	50%
Internal Assessment Overall	%

CO Coverage



COs	CO1	CO2	CO3	CO4
73	26.2	11.2	29.2	6.5
%	35.8	15.3	39.9	8.9

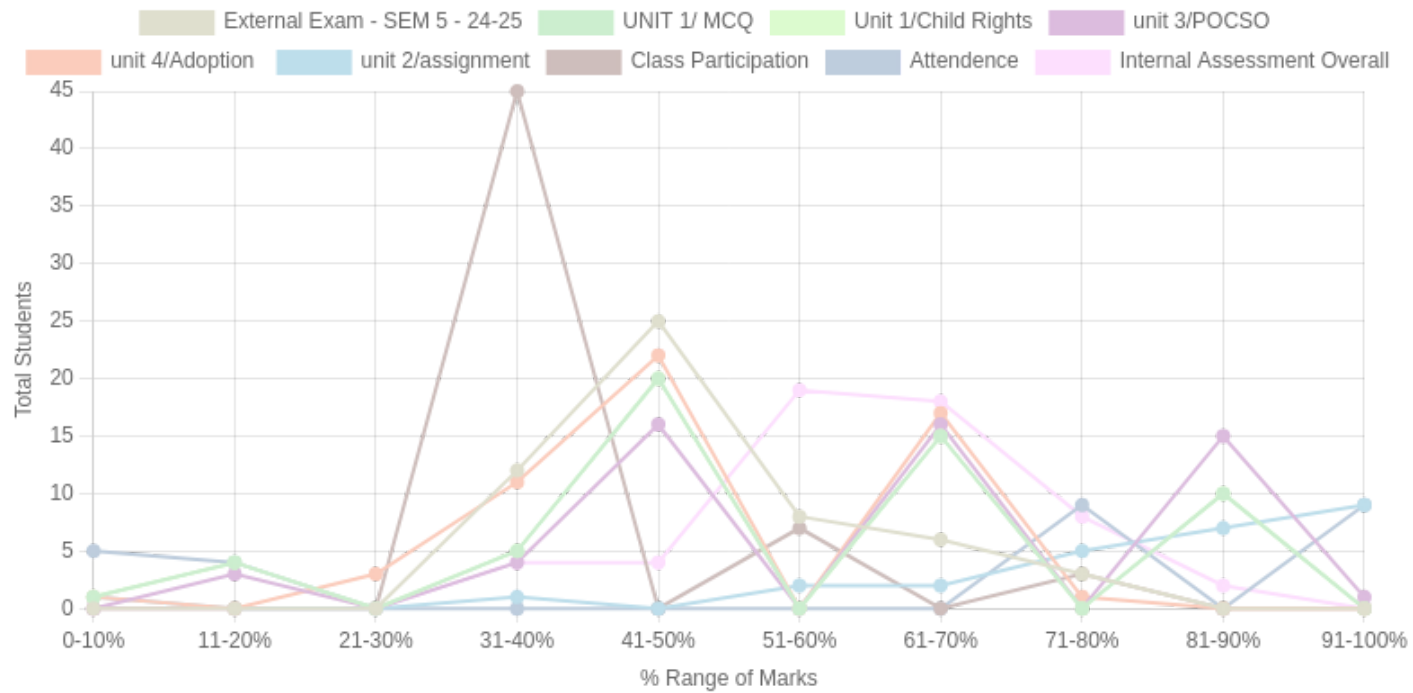
Formative (CIE) Assessments

Sr No	Exam Name	Date	Total Marks	Threshold in %	CO1	CO2	CO3	CO4	CO5	CO6	Avg Attainment
2	UNIT 1/ MCQ	02/09/2024	3	50	3	-	-	-	-	-	3
3	Unit 1/Child Rights	03/02/2025	3	50	3	-	-	-	-	-	3
4	unit 3/POCSO	03/02/2025	3	50	-	3	-	-	-	-	3
5	unit 4/Adoption	03/02/2025	4	50	-	-	3	-	-	-	3
6	unit 2/assignment	13/02/2025	5	50	-	-	3	3	-	-	3
7	Class Participation	13/02/2025	2.5	50	-	-	1	1	-	-	1
8	Attendance	05/02/2025	2.5	50	-	-	3	3	-	-	3
9	Internal Assessment Overall	14/02/2025	20		3	3	3	-	-	-	3

Summative (SEE) Assessments

Sr No	Exam Name	Date	Total Marks	Threshold in %	CO1	CO2	CO3	CO4	CO5	CO6	Avg Attainment
1	External Exam - SEM 5 - 24-25	20/10/2024	30	50	3	3	2.5	3	-	-	2.87

Student % wise Distribution



Sr No	Assessment Title	Type	Total Marks	Avg Marks	Threshold in %	No of Students Scoring										Total Students Above Threshold
						0-10%	11-20%	21-30%	31-40%	41-50%	51-60%	61-70%	71-80%	81-90%	91-100%	
1	External Exam - SEM 5 - 24-25	S	30	14.99	50	0	0	0	12	25	8	6	3	0	0	24
2	UNIT 1/ MCQ	F	3	1.67	50	1	4	0	5	20	0	15	0	10	0	45
3	Unit 1/Child Rights	F	3	1.67	50	1	4	0	5	20	0	15	0	10	0	45
4	unit 3/POCSO	F	3	1.85	50	0	3	0	4	16	0	16	0	15	1	48
5	unit 4/Adoption	F	4	1.98	50	1	0	3	11	22	0	17	1	0	0	40
6	unit 2/assignment	F	5	4.14	50	1	0	0	1	0	2	2	5	7	9	25
7	Class Participation	F	2.5	1.11	50	0	0	0	45	0	7	0	3	0	0	10
8	Attendance	F	2.5	1.57	50	5	4	0	0	0	0	0	9	0	9	18
9	Internal Assessment Overall	F	20	12.43		0	0	0	4	4	19	18	8	2	0	55

CO Indirect Attainment

Course Exit Survey - BSW - SEM 5

Q1	Recalling the definitions of child rights and the legal framework.
Scale	GOOD <input type="radio"/> BETTER <input type="radio"/> BEST <input type="radio"/>
Q2	Understanding the situational analysis of child rights in the context of caste, class, religion, and gender.
Scale	GOOD <input type="radio"/> BETTER <input type="radio"/> BEST <input type="radio"/>
Q3	Analyzing issues related to child abuse, neglect, and exploitation.
Scale	GOOD <input type="radio"/> BETTER <input type="radio"/> BEST <input type="radio"/>
Q4	Applying knowledge of laws for child protection.
Scale	GOOD <input type="radio"/> BETTER <input type="radio"/> BEST <input type="radio"/>

CO Attainment

CO	Direct Attainment	Indirect Attainment	Final Attainment	Target	Gap	Justification
CO1	2.59	2	2.47	1.37	1.1	-
CO2	2.4	2	2.31	2.25	0.06	-
CO3	2.29	3	2.43	2.87	-0.43	-
CO4	2.73	2	2.58	3	-0.41	-

Average CO Attainment : 2.44

PO Direct Attainment

Weighted Average Matrix

POs	PO1	PO2	PO3	PO4	PO5	PO6	PO7	PO8
Weighted Avg	2.25	2.25	2.25	2.25	2.75	2.25	2.5	2.5

Average CO Attainment : 2.44

POs	PO1	PO2	PO3	PO4	PO5	PO6	PO7	PO8
Calculation	2.25 (2.44)/ 3	2.25 (2.44)/ 3	2.25 (2.44)/ 3	2.25 (2.44)/ 3	2.75 (2.44)/ 3	2.25 (2.44)/ 3	2.5 (2.44)/ 3	2.5 (2.44)/ 3
Direct Attainment	1.83	1.83	1.83	1.83	2.24	1.83	2.03	2.03

COURSE OVERVIEW | BSW



Education

Course Overview

Program Outcomes

- | | |
|------------|---|
| PO1 | Graduates will critically analyze social realities, understand their changing dynamics, and actively engage in processes that contribute to positive social transformation. |
| PO2 | They will demonstrate an in-depth understanding of diverse communities, their unique challenges, and systemic inequalities, and advocate for social justice in their professional practice. |
| PO3 | Graduates will apply appropriate social work methods and strategies to effectively work with individuals, groups, and communities, addressing various social issues. |
| PO4 | They will embody professional social work values and ethics, ensuring integrity, respect, and accountability in all aspects of their practice. |
| PO5 | Graduates will develop problem-solving abilities and intervention strategies tailored to the needs of marginalized and vulnerable populations. |
| PO6 | They will integrate research and evidence-based knowledge to design, implement, and evaluate social work interventions effectively. |
| PO7 | Graduates will exhibit strong communication skills and the ability to collaborate with multidisciplinary teams to address social challenges holistically. |
| PO8 | They will demonstrate a commitment to lifelong learning, staying informed about emerging trends and practices in the field of social work. |

Course Outcomes

- | | |
|------------|---|
| CO1 | Identifying different learning strategies: formal, non-formal, informal, and lifelong learning. |
| CO2 | To understand the role of education as an instrument of human and social development. |
| CO3 | Analyzing issues related to Universal Elementary Education (UEE) and public-private education. |
| CO4 | Applying intervention skills to work with marginalized groups in education. |

CO-PO Mapping

courseOutcomes	PO1	PO2	PO3	PO4	PO5	PO6	PO7	PO8	Average
COEDU 5.4.1	1	1	1	2	1	1	2	1	1.25
COEDU 5.4.2	2	2	2	2	2	2	2	2	2
COEDU 5.4.3	3	3	3	2	3	3	3	2	2.75
COEDU 5.4.4	2	3	3	3	3	3	3	3	2.87
Average	2	2.25	2.25	2.25	2.25	2.25	2.5	2	-

CO Attainment Weightages

Direct Attainment	Indirect Attainment
80 %	20 %

CO Assessment Weightages

Formative (CIE)	Summative (SEE)
40 %	60 %

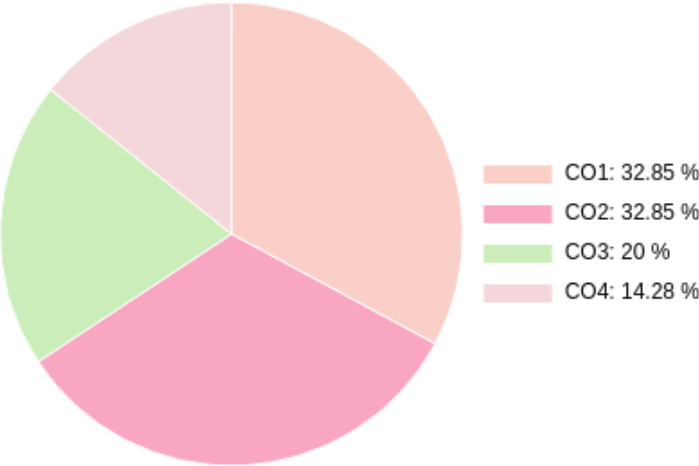
CO targets & Attainment Levels

CO	Target	Direct Attainment levels			Indirect Attainment levels		
		Level 1	Level 2	Level 3	Level 1	Level 2	Level 3
CO1	1.25	0 - 40	41 - 50	51 - 100	0 - 40	41 - 50	51 - 100
CO2	2	0 - 40	41 - 50	51 - 100	0 - 40	41 - 50	51 - 100
CO3	2.75	0 - 40	41 - 50	51 - 100	0 - 40	41 - 50	51 - 100
CO4	2.87	0 - 40	41 - 50	51 - 100	0 - 40	41 - 50	51 - 100

Exam Results

Exam Name	Threshold
External Exam - SEM 5 - 24-25	50%
UNIT 1/ MCQ	50%
unit 3	50%
unit 4	50%
unit 2/assignment	50%
Class Participation	50%
Attendance	50%
Internal Assessment Overall	%

CO Coverage



COs	CO1	CO2	CO3	CO4
70	23.0	23.0	14.0	10.0
%	32.9	32.9	20.0	14.3

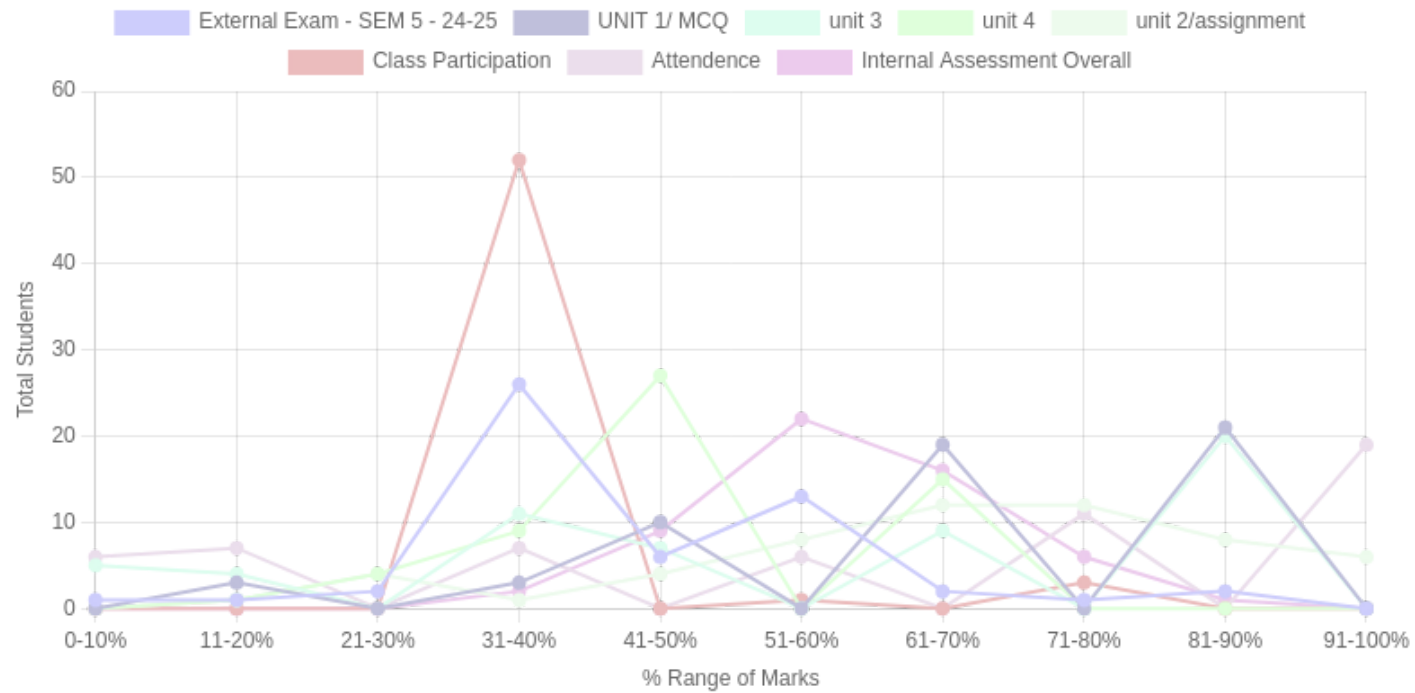
Formative (CIE) Assessments

Sr No	Exam Name	Date	Total Marks	Threshold in %	CO1	CO2	CO3	CO4	CO5	CO6	Avg Attainment
2	UNIT 1/ MCQ	02/09/2024	3	50	3	-	-	-	-	-	3
3	unit 3	03/02/2025	3	50	-	3	-	-	-	-	3
4	unit 4	03/02/2025	4	50	-	-	3	-	-	-	3
5	unit 2/assignment	13/02/2025	5	50	-	-	3	3	-	-	3
6	Class Participation	13/02/2025	2.5	50	-	-	1	1	-	-	1
7	Attendance	05/02/2025	2.5	50	-	-	3	3	-	-	3
8	Internal Assessment Overall	14/02/2025	20		3	3	3	3	-	-	3

Summative (SEE) Assessments

Sr No	Exam Name	Date	Total Marks	Threshold in %	CO1	CO2	CO3	CO4	CO5	CO6	Avg Attainment
1	External Exam - SEM 5 - 24-25	20/10/2024	30	50	2.5	2	-	-	-	-	2.25

Student % wise Distribution



Sr No	Assessment Title	Type	Total Marks	Avg Marks	Threshold in %	No of Students Scoring										Total Students Above Threshold
						0-10%	11-20%	21-30%	31-40%	41-50%	51-60%	61-70%	71-80%	81-90%	91-100%	
1	External Exam - SEM 5 - 24-25	S	30		50	1	1	2	26	6	13	2	1	2	0	18
2	UNIT 1/ MCQ	F	3	1.96	50	0	3	0	3	10	0	19	0	21	0	50
3	unit 3	F	3	1.63	50	5	4	0	11	7	0	9	0	20	0	36
4	unit 4	F	4	1.95	50	0	1	4	9	27	0	15	0	0	0	42
5	unit 2/assignment	F	5	3.55	50	0	1	4	1	4	8	12	12	8	6	50
6	Class Participation	F	2.5	1.06	50	0	0	0	52	0	1	0	3	0	0	4
7	Attendance	F	2.5	1.58	50	6	7	0	7	0	6	0	11	0	19	36
8	Internal Assessment Overall	F	20	12.12		0	0	0	2	9	22	16	6	1	0	56

CO Indirect Attainment

Course Exit Survey - BSW - SEM 5

Q1	Identifying different learning strategies: formal, non-formal, informal, and lifelong learning.
Scale	GOOD <input type="radio"/> BETTER <input type="radio"/> BEST <input type="radio"/>
Q2	To understand the role of education as an instrument of human and social development.
Scale	GOOD <input type="radio"/> BETTER <input type="radio"/> BEST <input type="radio"/>
Q3	Analyzing issues related to Universal Elementary Education (UEE) and public-private education.
Scale	GOOD <input type="radio"/> BETTER <input type="radio"/> BEST <input type="radio"/>
Q4	Applying intervention skills to work with marginalized groups in education.
Scale	GOOD <input type="radio"/> BETTER <input type="radio"/> BEST <input type="radio"/>

CO Attainment

CO	Direct Attainment	Indirect Attainment	Final Attainment	Target	Gap	Justification
CO1	2.1	1	1.88	1.25	0.62	-
CO2	1.8	2	1.84	2	-0.15	-
CO3	0.48	1	0.58	2.75	-2.17	-
CO4	0.3	1	0.44	2.87	-2.43	-

Average CO Attainment : 1.18

PO Direct Attainment

Weighted Average Matrix

POs	PO1	PO2	PO3	PO4	PO5	PO6	PO7	PO8
Weighted Avg	2	2.25	2.25	2.25	2.25	2.25	2.5	2

Average CO Attainment : 1.18

POs	PO1	PO2	PO3	PO4	PO5	PO6	PO7	PO8
Calculation	2 (1.18)/ 3	2.25 (1.18)/ 3	2.25 (1.18)/ 3	2.25 (1.18)/ 3	2.25 (1.18)/ 3	2.25 (1.18)/ 3	2.5 (1.18)/ 3	2 (1.18)/ 3
Direct Attainment	0.79	0.88	0.88	0.88	0.88	0.88	0.98	0.79

COURSE OVERVIEW | BSW



Field Work-v

Course Overview

Program Outcomes

- | | |
|------------|---|
| PO1 | Graduates will critically analyze social realities, understand their changing dynamics, and actively engage in processes that contribute to positive social transformation. |
| PO2 | They will demonstrate an in-depth understanding of diverse communities, their unique challenges, and systemic inequalities, and advocate for social justice in their professional practice. |
| PO3 | Graduates will apply appropriate social work methods and strategies to effectively work with individuals, groups, and communities, addressing various social issues. |
| PO4 | They will embody professional social work values and ethics, ensuring integrity, respect, and accountability in all aspects of their practice. |
| PO5 | Graduates will develop problem-solving abilities and intervention strategies tailored to the needs of marginalized and vulnerable populations. |
| PO6 | They will integrate research and evidence-based knowledge to design, implement, and evaluate social work interventions effectively. |
| PO7 | Graduates will exhibit strong communication skills and the ability to collaborate with multidisciplinary teams to address social challenges holistically. |
| PO8 | They will demonstrate a commitment to lifelong learning, staying informed about emerging trends and practices in the field of social work. |

Course Outcomes

- | | |
|-----|--|
| CO1 | To remember the structure, philosophy, and services of the organization, enhancing foundational knowledge about organizational frameworks. |
| CO2 | To understand the organization's goals and its role in addressing social issues, fostering a deeper awareness of its mission and impact. |
| CO3 | To apply problem-solving techniques to address social issues, equipping students with practical skills to find actionable solutions. |
| CO4 | To analyze the magnitude of social issues and their impact on communities, enabling students to critically evaluate societal challenges. |

CO-PO Mapping

courseOutcomes	PO1	PO2	PO3	PO4	PO5	PO6	PO7	PO8	Average
COBFW5 5.9.1	0	1	1	1	2	1	0	1	0.87
COBFW5 5.9.2	2	2	2	1	2	2	2	2	1.87
COBFW5 5.9.3	2	1	3	1	3	2	1	2	1.87
COBFW5 5.9.4	3	2	2	2	2	2	2	2	2.12
Average	1.75	1.5	2	1.25	2.25	1.75	1.25	1.75	-

CO Attainment Weightages

Direct Attainment	Indirect Attainment
80 %	20 %

CO Assessment Weightages

Formative (CIE)	Summative (SEE)
40 %	60 %

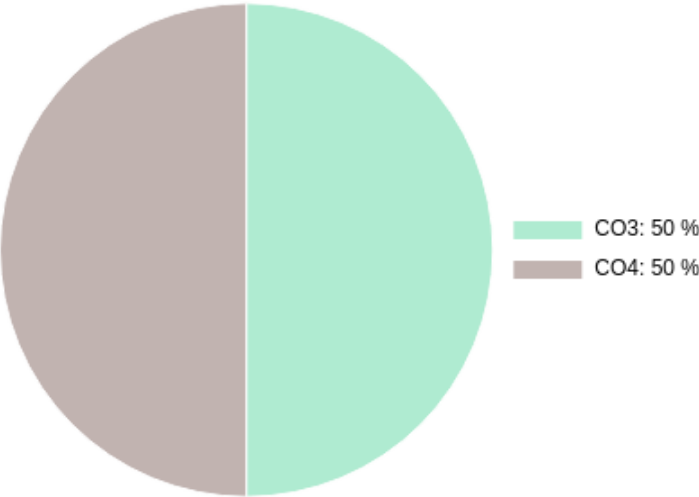
CO targets & Attainment Levels

CO	Target	Direct Attainment levels			Indirect Attainment levels		
		Level 1	Level 2	Level 3	Level 1	Level 2	Level 3
CO1	0.87	0 - 40	41 - 50	51 - 100	0 - 40	41 - 50	51 - 100
CO2	1.87	0 - 40	41 - 50	51 - 100	0 - 40	41 - 50	51 - 100
CO3	1.87	0 - 40	41 - 50	51 - 100	0 - 40	41 - 50	51 - 100
CO4	2.12	0 - 40	41 - 50	51 - 100	0 - 40	41 - 50	51 - 100

Exam Results

Exam Name	Threshold
Feild work	50%

CO Coverage



COs	CO3	CO4
80	40.0	40.0
%	50.0	50.0

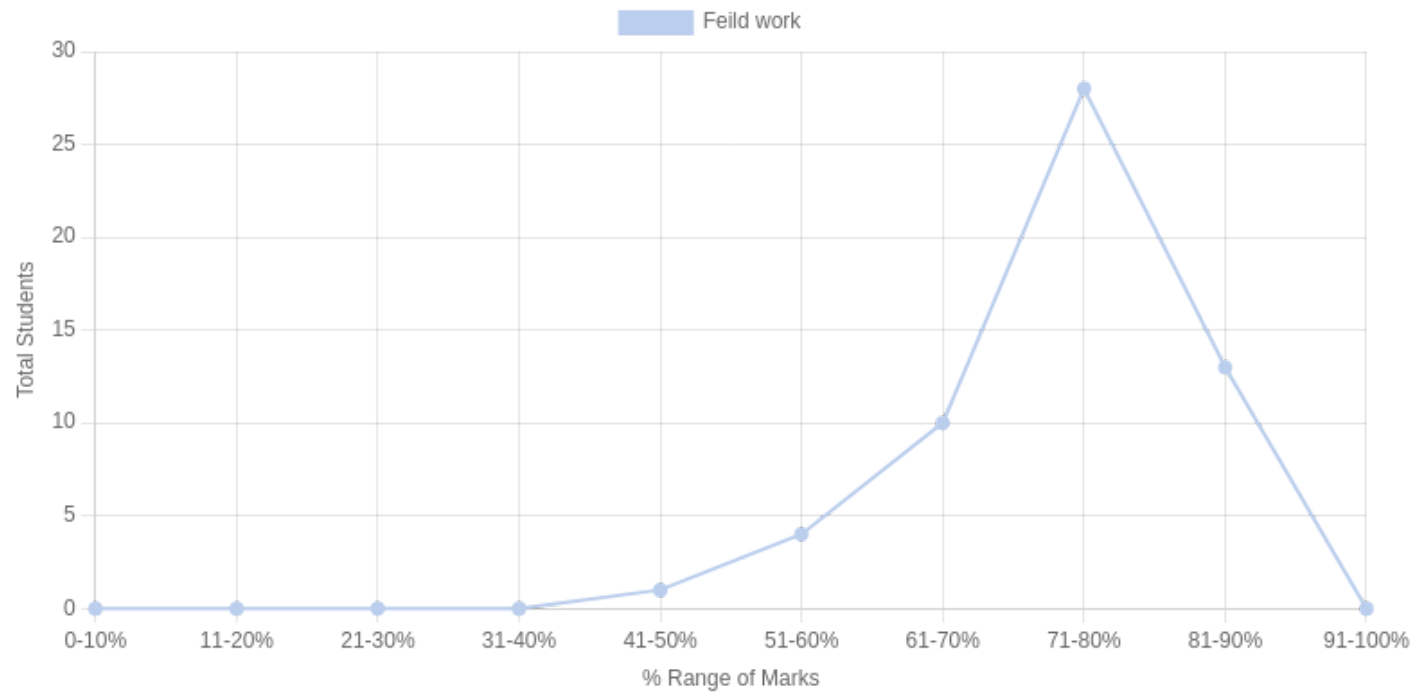
Formative (CIE) Assessments

Sr No	Exam Name	Date	Total Marks	Threshold in %	CO1	CO2	CO3	CO4	CO5	CO6	Avg Attainment
1	Feild work	08/02/2025	80	50	-	-	3	3	-	-	3

Summative (SEE) Assessments

Sr No	Exam Name	Date	Total Marks	Threshold in %	CO1	CO2	CO3	CO4	CO5	CO6	Avg Attainment
-------	-----------	------	-------------	----------------	-----	-----	-----	-----	-----	-----	----------------

Student % wise Distribution



Sr No	Assessment Title	Type	Total Marks	Avg Marks	Threshold in %	No of Students Scoring										Total Students Above Threshold
						0-10%	11-20%	21-30%	31-40%	41-50%	51-60%	61-70%	71-80%	81-90%	91-100%	
1	Feild work	F	80	58.96	50	0	0	0	0	1	4	10	28	13	0	56

CO Attainment

CO	Direct Attainment	Indirect Attainment	Final Attainment	Target	Gap	Justification
CO3	1.2	0	0.96	1.87	-0.91	-
CO4	1.2	0	0.96	2.12	-1.16	-

Average CO Attainment : 0.96

PO Direct Attainment

Weighted Average Matrix

POs	PO1	PO2	PO3	PO4	PO5	PO6	PO7	PO8
Weighted Avg	1.75	1.5	2	1.25	2.25	1.75	1.25	1.75

Average CO Attainment : 0.96

POs	PO1	PO2	PO3	PO4	PO5	PO6	PO7	PO8
Calculation	1.75 (0.96)/ 3	1.5 (0.96)/ 3	2 (0.96)/ 3	1.25 (0.96)/ 3	2.25 (0.96)/ 3	1.75 (0.96)/ 3	1.25 (0.96)/ 3	1.75 (0.96)/ 3
Direct Attainment	0.56	0.48	0.64	0.40	0.72	0.56	0.40	0.56

COURSE OVERVIEW | BSW



Research

Course Overview

Program Outcomes

- | | |
|------------|---|
| PO1 | Graduates will critically analyze social realities, understand their changing dynamics, and actively engage in processes that contribute to positive social transformation. |
| PO2 | They will demonstrate an in-depth understanding of diverse communities, their unique challenges, and systemic inequalities, and advocate for social justice in their professional practice. |
| PO3 | Graduates will apply appropriate social work methods and strategies to effectively work with individuals, groups, and communities, addressing various social issues. |
| PO4 | They will embody professional social work values and ethics, ensuring integrity, respect, and accountability in all aspects of their practice. |
| PO5 | Graduates will develop problem-solving abilities and intervention strategies tailored to the needs of marginalized and vulnerable populations. |
| PO6 | They will integrate research and evidence-based knowledge to design, implement, and evaluate social work interventions effectively. |
| PO7 | Graduates will exhibit strong communication skills and the ability to collaborate with multidisciplinary teams to address social challenges holistically. |
| PO8 | They will demonstrate a commitment to lifelong learning, staying informed about emerging trends and practices in the field of social work. |

Course Outcomes

CO1 Identifying ethical guidelines and tools for data collection, including questionnaires, interview schedules, and FGD guides.

CO2 Understanding scaling techniques and the process of planning a pilot study.

CO3 Analyzing collected data using coding, descriptive, and inferential statistics.

CO4 Analyze data using relevant methods and develop well-structured research reports based on the findings.

CO-PO Mapping

courseOutcomes	PO1	PO2	PO3	PO4	PO5	PO6	PO7	PO8	Average
CORES 5.3.1	1	1	1	1	1	2	1	1	1.12
CORES 5.3.2	2	2	2	2	1	2	2	2	1.87
CORES 5.3.3	3	3	3	2	3	3	3	2	2.75
CORES 5.3.4	2	2	3	3	2	3	3	3	2.62
Average	2	2	2.25	2	1.75	2.5	2.25	2	-

CO Attainment Weightages

Direct Attainment	Indirect Attainment
80 %	20 %

CO Assessment Weightages

Formative (CIE)	Summative (SEE)
40 %	60 %

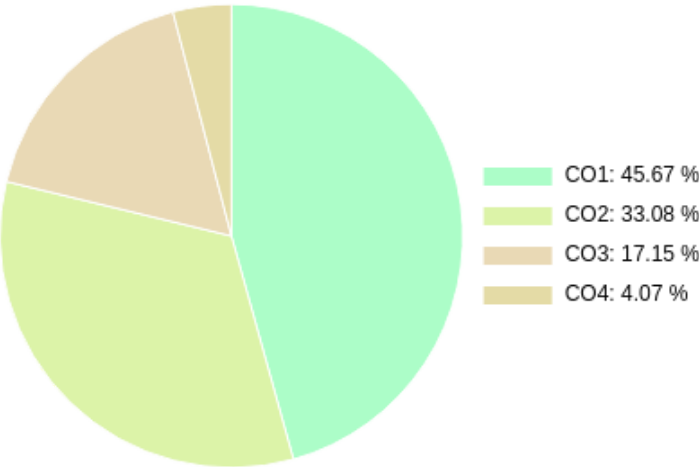
CO targets & Attainment Levels

CO	Target	Direct Attainment levels			Indirect Attainment levels		
		Level 1	Level 2	Level 3	Level 1	Level 2	Level 3
CO1	1.12	0 - 40	41 - 50	51 - 100	0 - 40	41 - 50	51 - 100
CO2	1.87	0 - 40	41 - 50	51 - 100	0 - 40	41 - 50	51 - 100
CO3	2.75	0 - 40	41 - 50	51 - 100	0 - 40	41 - 50	51 - 100
CO4	2.62	0 - 40	41 - 50	51 - 100	0 - 40	41 - 50	51 - 100

Exam Results

Exam Name	Threshold
External Exam - SEM 5 - 24-25	50%
unit 1/Quiz	50%
unit 2&3/Proposal making (Assignment)	50%
unit 4/Exporting data to SPSS	50%
unit 5/Creating tables and charts	50%
unit 6/Short Notes	50%
Class Participation	50%
Internal Assessment Overall	%

CO Coverage



COs	CO1	CO2	CO3	CO4
135	61.7	44.7	23.2	5.5
%	45.7	33.1	17.1	4.1

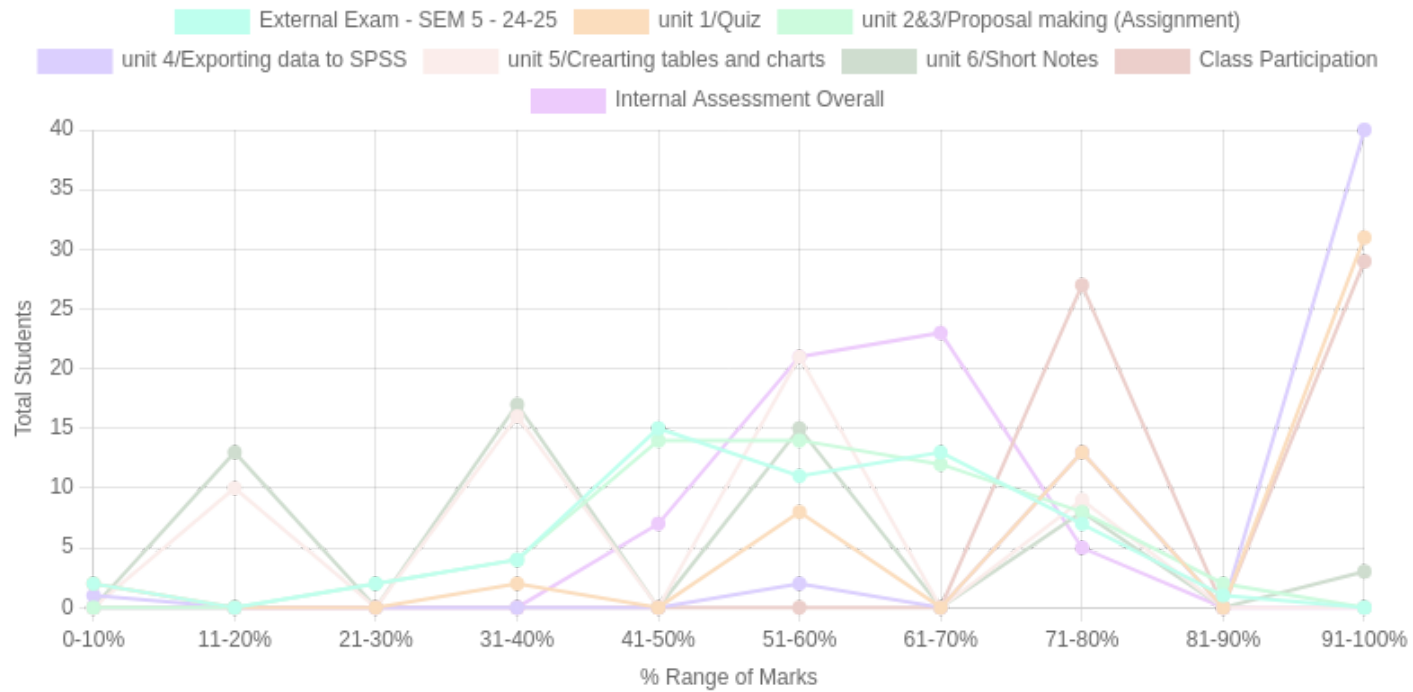
Formative (CIE) Assessments

Sr No	Exam Name	Date	Total Marks	Threshold in %	CO1	CO2	CO3	CO4	CO5	CO6	Avg Attainment
2	unit 1/Quiz	03/02/2025	5	50	3	-	-	-	-	-	3
3	unit 2&3/Proposal making (Assignment)	03/02/2025	10	50	3	3	-	-	-	-	3
4	unit 4/Exporting data to SPSS	03/02/2025	5	50	3	3	-	-	-	-	3
5	unit 5/Creating tables and charts	03/02/2025	5	50	3	3	-	-	-	-	3
6	unit 6/Short Notes	03/02/2025	5	50	2	2	2	-	-	-	2
7	Class Participation	13/02/2025	5	50	-	-	3	3	-	-	3
8	Internal Assessment Overall	14/02/2025	40		3	3	-	-	-	-	3

Summative (SEE) Assessments

Sr No	Exam Name	Date	Total Marks	Threshold in %	CO1	CO2	CO3	CO4	CO5	CO6	Avg Attainment
1	External Exam - SEM 5 - 24-25	20/10/2024	60	50	2.5	2.33	2.66	2	-	-	2.37

Student % wise Distribution



Sr No	Assessment Title	Type	Total Marks	Avg Marks	Threshold in %	No of Students Scoring										Total Students Above Threshold
						0-10%	11-20%	21-30%	31-40%	41-50%	51-60%	61-70%	71-80%	81-90%	91-100%	
1	External Exam - SEM 5 - 24-25	S	60	32.43	50	2	0	2	4	15	11	13	7	1	0	33
2	unit 1/Quiz	F	5	4.19	50	2	0	0	2	0	8	0	13	0	31	52
3	unit 2&3/Proposal making (Assignment)	F	10	6.1	50	0	0	2	4	14	14	12	8	2	0	50
4	unit 4/Exporting data to SPSS	F	5	4.6	50	1	0	0	0	0	2	0	13	0	40	55
5	unit 5/Crearting tables and charts	F	5	2.51	50	0	10	0	16	0	21	0	9	0	0	30
6	unit 6/Short Notes	F	5	2.48	50	0	13	0	17	0	15	0	8	0	3	26
7	Class Participation	F	5	4.51	50	0	0	0	0	0	0	0	27	0	29	56
8	Internal Assessment Overall	F	40	24.42		0	0	0	0	7	21	23	5	0	0	56

CO Indirect Attainment

Course Exit Survey - BSW - SEM 5

Q1	Identifying ethical guidelines and tools for data collection, including questionnaires, interview schedules, and FGD guides.
Scale	GOOD <input type="radio"/> BETTER <input type="radio"/> BEST <input type="radio"/>
Q2	Understanding scaling techniques and the process of planning a pilot study.
Scale	GOOD <input type="radio"/> BETTER <input type="radio"/> BEST <input type="radio"/>
Q3	Analyzing collected data using coding, descriptive, and inferential statistics.
Scale	GOOD <input type="radio"/> BETTER <input type="radio"/> BEST <input type="radio"/>
Q4	Analyze data using relevant methods and develop well-structured research reports based on the findings.
Scale	GOOD <input type="radio"/> BETTER <input type="radio"/> BEST <input type="radio"/>

CO Attainment

CO	Direct Attainment	Indirect Attainment	Final Attainment	Target	Gap	Justification
CO1	2.43	1	2.14	1.12	1.02	-
CO2	2.27	1	2.01	1.87	0.13	-
CO3	1.99	1	1.79	2.75	-0.96	-
CO4	1.2	1	1.15	2.62	-1.47	-

Average CO Attainment : 1.77

PO Direct Attainment

Weighted Average Matrix

POs	PO1	PO2	PO3	PO4	PO5	PO6	PO7	PO8
Weighted Avg	2	2	2.25	2	1.75	2.5	2.25	2

Average CO Attainment : 1.77

POs	PO1	PO2	PO3	PO4	PO5	PO6	PO7	PO8
Calculation	2 (1.77)/ 3	2 (1.77)/ 3	2.25 (1.77)/ 3	2 (1.77)/ 3	1.75 (1.77)/ 3	2.5 (1.77)/ 3	2.25 (1.77)/ 3	2 (1.77)/ 3
Direct Attainment	1.18	1.18	1.33	1.18	1.03	1.47	1.33	1.18

COURSE OVERVIEW | BSW



Social Entrepreneurship

Course Overview

Program Outcomes

- | | |
|------------|---|
| PO1 | Graduates will critically analyze social realities, understand their changing dynamics, and actively engage in processes that contribute to positive social transformation. |
| PO2 | They will demonstrate an in-depth understanding of diverse communities, their unique challenges, and systemic inequalities, and advocate for social justice in their professional practice. |
| PO3 | Graduates will apply appropriate social work methods and strategies to effectively work with individuals, groups, and communities, addressing various social issues. |
| PO4 | They will embody professional social work values and ethics, ensuring integrity, respect, and accountability in all aspects of their practice. |
| PO5 | Graduates will develop problem-solving abilities and intervention strategies tailored to the needs of marginalized and vulnerable populations. |
| PO6 | They will integrate research and evidence-based knowledge to design, implement, and evaluate social work interventions effectively. |
| PO7 | Graduates will exhibit strong communication skills and the ability to collaborate with multidisciplinary teams to address social challenges holistically. |
| PO8 | They will demonstrate a commitment to lifelong learning, staying informed about emerging trends and practices in the field of social work. |

Course Outcomes

- | | |
|------------|---|
| CO1 | Recalling the definitions and roles of social entrepreneurship. |
| CO2 | Understand the Social Entrepreneurship Ecosystem, Traits & Competencies of a Social Entrepreneur |
| CO3 | Analyze the feasibility of opportunities, business plans, and market research for social enterprises. |
| CO4 | Evaluate the Sustainability Strategies for Social Enterprises, including Financial Plans and Resource Linkages. |
| CO5 | Apply the Ideation / Design Thinking Process and Innovation to craft and test competitive Lean Canvas and Business Plans. |

CO-PO Mapping

courseOutcomes	PO1	PO2	PO3	PO4	PO5	PO6	PO7	PO8	Average
COSOEN 5.8.1	1	1	1	1	1	1	1	1	1
COSOEN 5.8.2	2	2	2	2	2	2	2	2	2
COSOEN 5.8.3	3	3	3	2	3	3	3	3	2.87
COSOEN 5.8.4	2	2	3	2	3	3	2	2	2.37
COSOEN 5.8.5	3	3	3	3	3	3	3	3	3
Average	2.2	2.2	2.4	2	2.4	2.4	2.2	2.2	-

CO Attainment Weightages

Direct Attainment	Indirect Attainment
80 %	20 %

CO Assessment Weightages

Formative (CIE)	Summative (SEE)
40 %	60 %

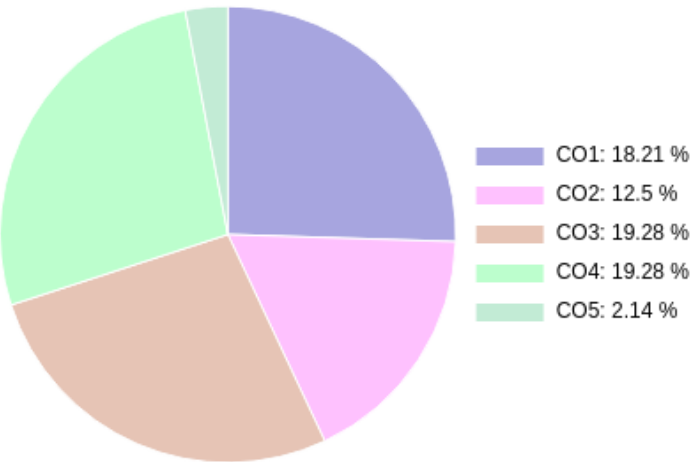
CO targets & Attainment Levels

CO	Target	Direct Attainment levels			Indirect Attainment levels		
		Level 1	Level 2	Level 3	Level 1	Level 2	Level 3
CO1	1	0 - 40	41 - 50	51 - 100	0 - 40	41 - 50	51 - 100
CO2	2	0 - 40	41 - 50	51 - 100	0 - 40	41 - 50	51 - 100
CO3	2.87	0 - 40	41 - 50	51 - 100	0 - 40	41 - 50	51 - 100
CO4	2.37	0 - 40	41 - 50	51 - 100	0 - 40	41 - 50	51 - 100
CO5	3	0 - 40	41 - 50	51 - 100	0 - 40	41 - 50	51 - 100

Exam Results

Exam Name	Threshold
UNIT 1/ASSIGNMENT	50%
UNIT 2/MCQ	50%
UNIT 3/LEAN CANVAS	50%
CLASS PARTICIPATION	50%
ATTENDANCE	50%
External Exam - SEM 5 - 24-25	50%
Internal Assessment Overall	%

CO Coverage



COs	CO1	CO2	CO3	CO4	CO5
70	13.5	1.5	13.5	12.8	8.8
%	19.3	2.1	19.3	18.2	12.5

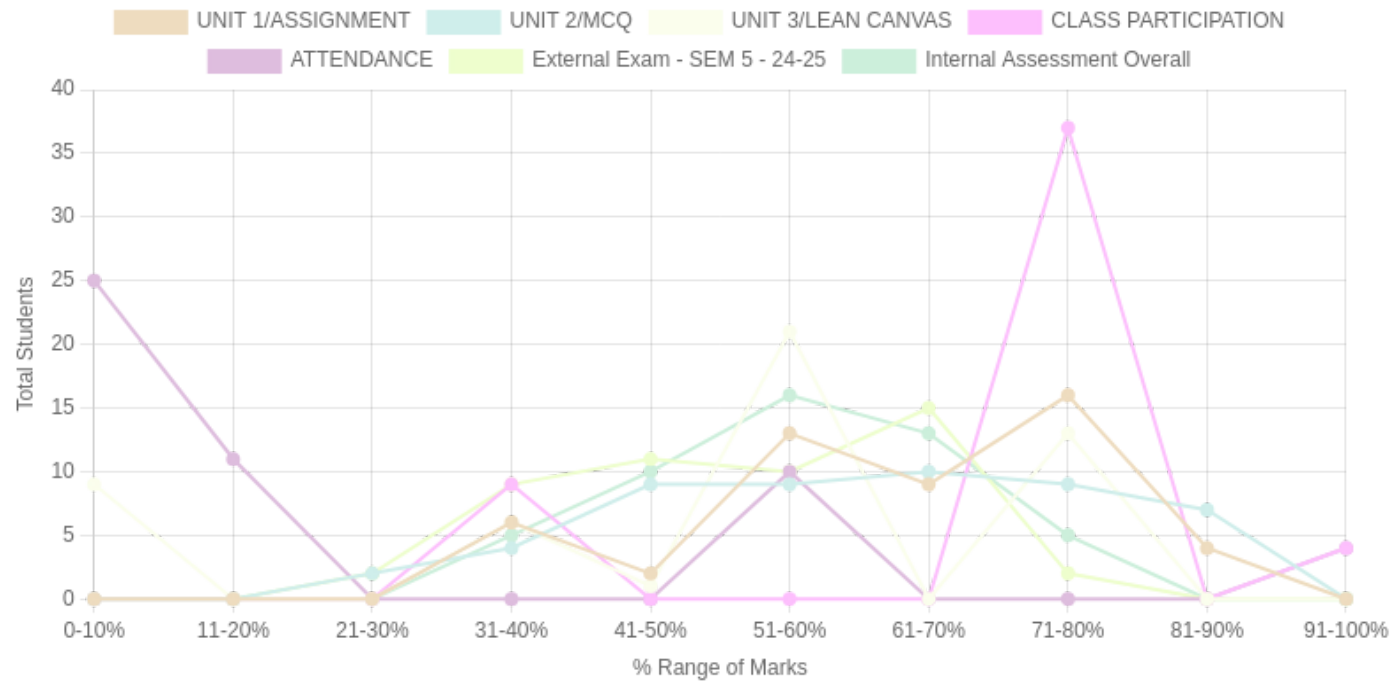
Formative (CIE) Assessments

Sr No	Exam Name	Date	Total Marks	Threshold in %	CO1	CO2	CO3	CO4	CO5	CO6	Avg Attainment
1	UNIT 1/ASSIGNMENT	10/10/2024	5	50	-	-	-	3	3	-	3
2	UNIT 2/MCQ	10/10/2024	5	50	-	-	-	3	3	-	3
3	UNIT 3/LEAN CANVAS	13/11/2024	5	50	-	-	-	3	3	-	3
4	CLASS PARTICIPATION	10/10/2024	2.5	50	-	-	-	3	-	-	3
5	ATTENDANCE	08/11/2024	2.5	50	-	-	-	1	1	-	1
7	Internal Assessment Overall	14/02/2025	20		-	-	-	-	-	-	

Summative (SEE) Assessments

Sr No	Exam Name	Date	Total Marks	Threshold in %	CO1	CO2	CO3	CO4	CO5	CO6	Avg Attainment
6	External Exam - SEM 5 - 24-25	20/10/2024	30	50	3	3	3	3	-	-	3

Student % wise Distribution



Sr No	Assessment Title	Type	Total Marks	Avg Marks	Threshold in %	No of Students Scoring										Total Students Above Threshold
						0-10%	11-20%	21-30%	31-40%	41-50%	51-60%	61-70%	71-80%	81-90%	91-100%	
1	UNIT 1/ASSIGNMENT	F	5	3.39	50	0	0	0	6	2	13	9	16	4	0	44
2	UNIT 2/MCQ	F	5	3.15	50	0	0	2	4	9	9	10	9	7	0	41
3	UNIT 3/LEAN CANVAS	F	5	2.59	50	9	0	0	6	1	21	0	13	0	0	35
4	CLASS PARTICIPATION	F	2.5	1.86	50	0	0	0	9	0	0	0	37	0	4	41
5	ATTENDANCE	F	2.5	0.61	50	25	11	0	0	0	10	0	0	0	4	14
6	External Exam - SEM 5 - 24-25	S	30	16.32	50	0	0	2	9	11	10	15	2	0	0	32
7	Internal Assessment Overall	F	20	11.71		0	0	0	5	10	16	13	5	0	0	49

CO Indirect Attainment

Course Exit Survey - BSW - SEM 5

Q1	Recalling the definitions and roles of social entrepreneurship.
Scale	GOOD <input type="radio"/> BETTER <input type="radio"/> BEST <input type="radio"/>
Q2	Understand the Social Entrepreneurship Ecosystem, Traits & Competencies of a Social Entrepreneur
Scale	GOOD <input type="radio"/> BETTER <input type="radio"/> BEST <input type="radio"/>
Q3	Analyze the feasibility of opportunities, business plans, and market research for social enterprises.
Scale	GOOD <input type="radio"/> BETTER <input type="radio"/> BEST <input type="radio"/>
Q4	Evaluate the Sustainability Strategies for Social Enterprises, including Financial Plans and Resource Linkages.
Scale	GOOD <input type="radio"/> BETTER <input type="radio"/> BEST <input type="radio"/>
Q5	Apply the Ideation / Design Thinking Process and Innovation to craft and test competitive Lean Canvas and Business Plans.
Scale	GOOD <input type="radio"/> BETTER <input type="radio"/> BEST <input type="radio"/>

CO Attainment

CO	Direct Attainment	Indirect Attainment	Final Attainment	Target	Gap	Justification
CO1	1.79	1	1.63	1	0.62	-
CO2	1.79	1	1.63	2	-0.37	-
CO3	1.79	1	1.63	2.87	-1.24	-
CO4	2.84	1	2.47	2.37	0.1	-
CO5	1	1	1	3	-2	-

Average CO Attainment : 1.67

PO Direct Attainment

Weighted Average Matrix

POs	PO1	PO2	PO3	PO4	PO5	PO6	PO7	PO8
Weighted Avg	2.2	2.2	2.4	2	2.4	2.4	2.2	2.2

Average CO Attainment : 1.67

POs	PO1	PO2	PO3	PO4	PO5	PO6	PO7	PO8
Calculation	2.2 (1.67)/ 3	2.2 (1.67)/ 3	2.4 (1.67)/ 3	2 (1.67)/ 3	2.4 (1.67)/ 3	2.4 (1.67)/ 3	2.2 (1.67)/ 3	2.2 (1.67)/ 3
Direct Attainment	1.22	1.22	1.34	1.11	1.34	1.34	1.22	1.22

COURSE OVERVIEW | BSW



Social Movements

Course Overview

Program Outcomes

- | | |
|-----|---|
| PO1 | Graduates will critically analyze social realities, understand their changing dynamics, and actively engage in processes that contribute to positive social transformation. |
| PO2 | They will demonstrate an in-depth understanding of diverse communities, their unique challenges, and systemic inequalities, and advocate for social justice in their professional practice. |
| PO3 | Graduates will apply appropriate social work methods and strategies to effectively work with individuals, groups, and communities, addressing various social issues. |
| PO4 | They will embody professional social work values and ethics, ensuring integrity, respect, and accountability in all aspects of their practice. |
| PO5 | Graduates will develop problem-solving abilities and intervention strategies tailored to the needs of marginalized and vulnerable populations. |
| PO6 | They will integrate research and evidence-based knowledge to design, implement, and evaluate social work interventions effectively. |
| PO7 | Graduates will exhibit strong communication skills and the ability to collaborate with multidisciplinary teams to address social challenges holistically. |
| PO8 | They will demonstrate a commitment to lifelong learning, staying informed about emerging trends and practices in the field of social work. |

Course Outcomes

- | | |
|-----|--|
| CO1 | Recalling definitions, typologies, and approaches of social movements. |
| CO2 | Understanding the theoretical frameworks such as Relative Deprivation Theory, Strain Theory, and Post-Modernism. |
| CO3 | Analyzing the social, economic, and political contexts that lead to social movements, |
| CO4 | Applying advocacy and mobilization skills in the context of social work. |

CO-PO Mapping

courseOutcomes	PO1	PO2	PO3	PO4	PO5	PO6	PO7	PO8	Average
COSOMO 5.2.1	1	1	1	2	1	1	1	1	1.12
COSOMO 5.2.2	2	2	2	2	1	2	2	2	1.87
COSOMO 5.2.3	3	3	3	2	3	3	3	2	2.75
COSOMO 5.2.4	2	3	3	3	3	3	3	3	2.87
Average	2	2.25	2.25	2.25	2	2.25	2.25	2	-

CO Attainment Weightages

Direct Attainment	Indirect Attainment
80 %	20 %

CO Assessment Weightages

Formative (CIE)	Summative (SEE)
40 %	60 %

CO targets & Attainment Levels

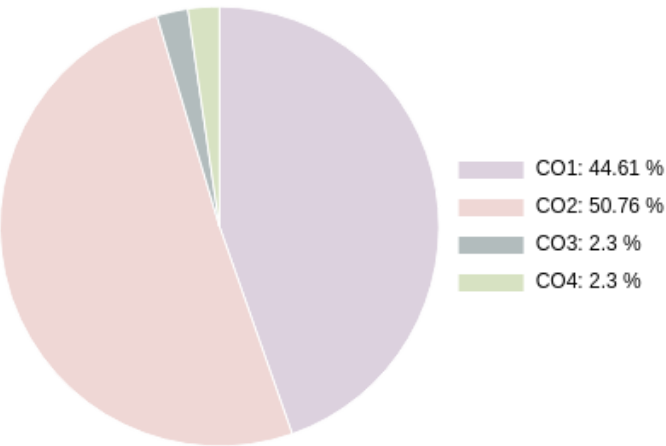
CO	Target	Direct Attainment levels			Indirect Attainment levels		
		Level 1	Level 2	Level 3	Level 1	Level 2	Level 3
CO1	1.12	0 - 40	41 - 50	51 - 100	0 - 40	41 - 50	51 - 100

CO	Target	Direct Attainment levels			Indirect Attainment levels		
		Level 1	Level 2	Level 3	Level 1	Level 2	Level 3
CO2	1.87	0 - 40	41 - 50	51 - 100	0 - 40	41 - 50	51 - 100
CO3	2.75	0 - 40	41 - 50	51 - 100	0 - 40	41 - 50	51 - 100
CO4	2.87	0 - 40	41 - 50	51 - 100	0 - 40	41 - 50	51 - 100

Exam Results

Exam Name	Threshold
UNIT 1/CHRACHTERISTICS	50%
UNIT 2/THEORIES ON SOCIAL MOVEMENTS	50%
UNIT 3/POSTER OR CREATIVE WRITING ON MOVEMENTS	50%
UNIT 4/MUSIC AND SOCIAL MOVEMENTS	50%
External Exam - SEM 5 - 24-25	50%
Internal Assessment Overall	%

CO Coverage



COs	CO1	CO2	CO3	CO4
65	29.0	33.0	1.5	1.5
%	44.6	50.8	2.3	2.3

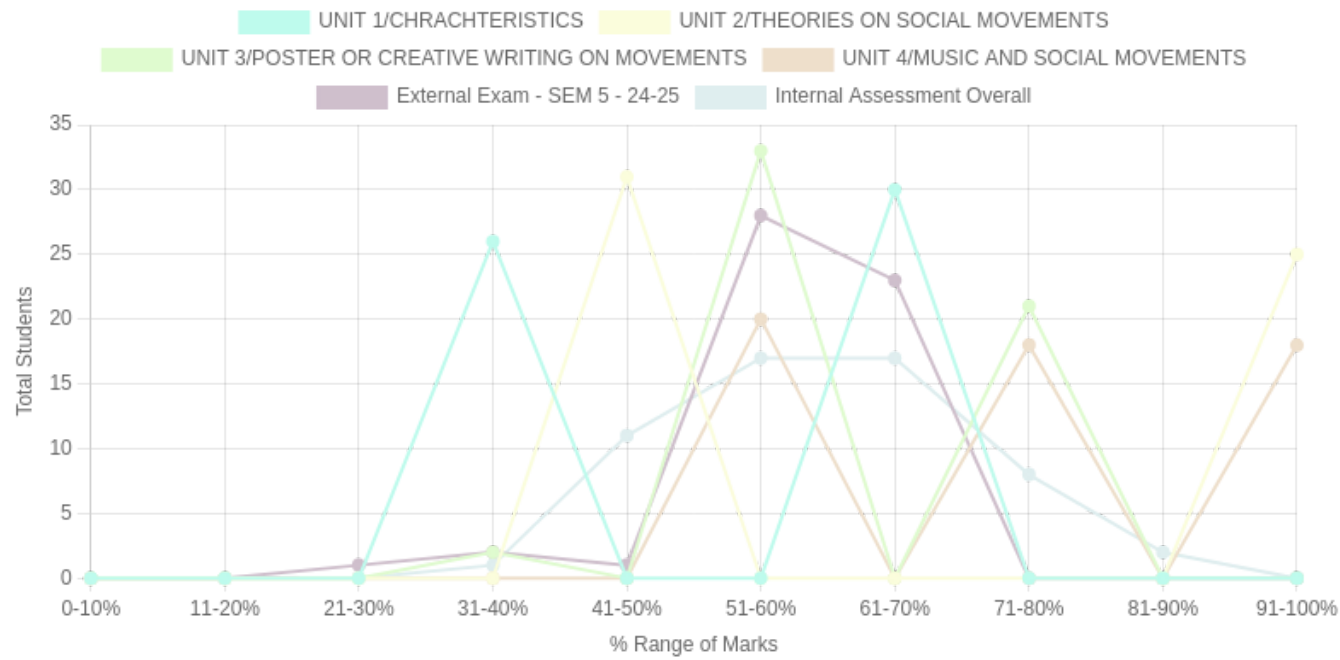
Formative (CIE) Assessments

Sr No	Exam Name	Date	Total Marks	Threshold in %	CO1	CO2	CO3	CO4	CO5	CO6	Avg Attainment
1	UNIT 1/CHRACHTERISTICS	10/10/2024	3	50	3	-	-	-	-	-	3
2	UNIT 2/THEORIES ON SOCIAL MOVEMENTS	10/10/2024	2	50	-	3	-	-	-	-	3
3	UNIT 3/POSTER OR CREATIVE WRITING ON MOVEMENTS	10/10/2024	5	50	3	3	-	-	-	-	3
4	UNIT 4/MUSIC AND SOCIAL MOVEMENTS	14/11/2024	5	50	-	3	-	-	-	-	3
6	Internal Assessment Overall	14/02/2025	20		3	3	-	-	-	-	3

Summative (SEE) Assessments

Sr No	Exam Name	Date	Total Marks	Threshold in %	CO1	CO2	CO3	CO4	CO5	CO6	Avg Attainment
5	External Exam - SEM 5 - 24-25	20/10/2024	30	50	2	2	1	1	-	-	1.5

Student % wise Distribution



Sr No	Assessment Title	Type	Total Marks	Avg Marks	Threshold in %	No of Students Scoring										Total Students Above Threshold
						0-10%	11-20%	21-30%	31-40%	41-50%	51-60%	61-70%	71-80%	81-90%	91-100%	
1	UNIT 1/CHARACTERISTICS	F	3	1.53	50	0	0	0	26	0	0	30	0	0	0	30
2	UNIT 2/THEORIES ON SOCIAL MOVEMENTS	F	2	1.44	50	0	0	0	0	31	0	0	0	0	25	56
3	UNIT 3/POSTER OR CREATIVE WRITING ON MOVEMENTS	F	5	3.33	50	0	0	0	2	0	33	0	21	0	0	54
4	UNIT 4/MUSIC AND SOCIAL MOVEMENTS	F	5	3.96	50	0	0	0	0	0	20	0	18	0	18	56
5	External Exam - SEM 5 - 24-25	S	30	17.54	50	0	0	1	2	1	28	23	0	0	0	51
6	Internal Assessment Overall	F	20	12.37		0	0	0	1	11	17	17	8	2	0	56

CO Indirect Attainment

Course Exit Survey - BSW - SEM 5

Q1	Recalling definitions, typologies, and approaches of social movements.
Scale	GOOD <input type="radio"/> BETTER <input type="radio"/> BEST <input type="radio"/>
Q2	Understanding the theoretical frameworks such as Relative Deprivation Theory, Strain Theory, and Post-Modernism.
Scale	GOOD <input type="radio"/> BETTER <input type="radio"/> BEST <input type="radio"/>
Q3	Analyzing the social, economic, and political contexts that lead to social movements,
Scale	GOOD <input type="radio"/> BETTER <input type="radio"/> BEST <input type="radio"/>
Q4	Applying advocacy and mobilization skills in the context of social work.
Scale	GOOD <input type="radio"/> BETTER <input type="radio"/> BEST <input type="radio"/>

CO Attainment

CO	Direct Attainment	Indirect Attainment	Final Attainment	Target	Gap	Justification
CO1	1.99	1	1.79	1.12	0.67	-
CO2	2.1	1	1.88	1.87	-	-
CO3	0.6	2	0.88	2.75	-1.87	-
CO4	0.6	1	0.68	2.87	-2.19	-

Average CO Attainment : 1.3

PO Direct Attainment

Weighted Average Matrix

POs	PO1	PO2	PO3	PO4	PO5	PO6	PO7	PO8
Weighted Avg	2	2.25	2.25	2.25	2	2.25	2.25	2

Average CO Attainment : 1.3

POs	PO1	PO2	PO3	PO4	PO5	PO6	PO7	PO8
Calculation	2 (1.3)/ 3	2.25 (1.3)/ 3	2.25 (1.3)/ 3	2.25 (1.3)/ 3	2 (1.3)/ 3	2.25 (1.3)/ 3	2.25 (1.3)/ 3	2 (1.3)/ 3
Direct Attainment	0.87	0.98	0.98	0.98	0.87	0.98	0.98	0.87



Social Work Theories

Course Overview

Program Outcomes

- | | |
|-----|---|
| PO1 | Graduates will critically analyze social realities, understand their changing dynamics, and actively engage in processes that contribute to positive social transformation. |
| PO2 | They will demonstrate an in-depth understanding of diverse communities, their unique challenges, and systemic inequalities, and advocate for social justice in their professional practice. |
| PO3 | Graduates will apply appropriate social work methods and strategies to effectively work with individuals, groups, and communities, addressing various social issues. |
| PO4 | They will embody professional social work values and ethics, ensuring integrity, respect, and accountability in all aspects of their practice. |
| PO5 | Graduates will develop problem-solving abilities and intervention strategies tailored to the needs of marginalized and vulnerable populations. |
| PO6 | They will integrate research and evidence-based knowledge to design, implement, and evaluate social work interventions effectively. |
| PO7 | Graduates will exhibit strong communication skills and the ability to collaborate with multidisciplinary teams to address social challenges holistically. |
| PO8 | They will demonstrate a commitment to lifelong learning, staying informed about emerging trends and practices in the field of social work. |

Course Outcomes

CO1 Understanding the relevance of ecological theory, Person-in-Environment perspective, and family systems theory.

CO2 Applying anti-oppressive and feminist social work concepts in practice.

CO3 Analyzing the implications of structural and radical social work in neoliberal policy regimes.

CO4 Identifying key concepts of behavioral, system, Marxist, and feminist theories.

CO-PO Mapping

courseOutcomes	PO1	PO2	PO3	PO4	PO5	PO6	PO7	PO8	Average
COSWTH 5.1.1	2	2	2	2	1	1	2	1	1.62
COSWTH 5.1.2	3	3	3	2	3	3	3	3	2.87
COSWTH 5.1.3	3	3	3	2	3	3	3	2	2.75
COSWTH 5.1.4	1	1	2	2	1	1	2	2	1.5
Average	2.25	2.25	2.5	2	2	2	2.5	2	-

CO Attainment Weightages

Direct Attainment	Indirect Attainment
80 %	20 %

CO Assessment Weightages

Formative (CIE)	Summative (SEE)
40 %	60 %

CO targets & Attainment Levels

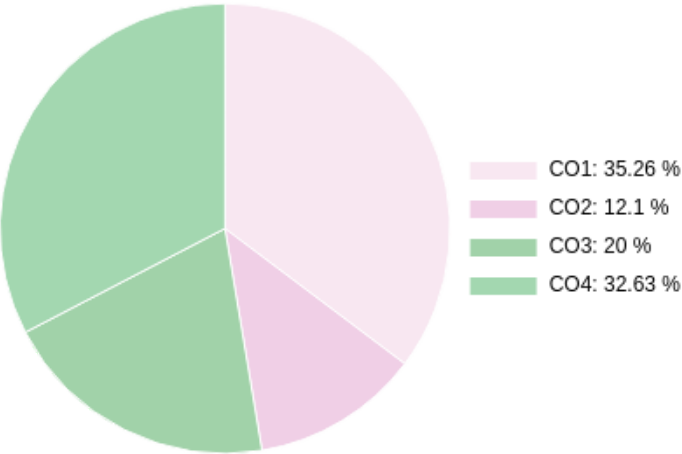
CO	Target	Direct Attainment levels			Indirect Attainment levels		
		Level 1	Level 2	Level 3	Level 1	Level 2	Level 3
CO1	1.62	0 - 40	41 - 50	51 - 100	0 - 40	41 - 50	51 - 100

CO	Target	Direct Attainment levels			Indirect Attainment levels		
		Level 1	Level 2	Level 3	Level 1	Level 2	Level 3
CO2	2.87	0 - 40	41 - 50	51 - 100	0 - 40	41 - 50	51 - 100
CO3	2.75	0 - 40	41 - 50	51 - 100	0 - 40	41 - 50	51 - 100
CO4	1.5	0 - 40	41 - 50	51 - 100	0 - 40	41 - 50	51 - 100

Exam Results

Exam Name	Threshold
UNIT 1/INTRODUCTION TO THEORY	50%
UNIT 2/BEHAVIOURAL AND SYSTEM THEORIES	50%
UNIT 3/MARXIST AND FEMINIST THEORIES	50%
UNIT 4/POST MODERN AND SOCIAL JUSTICE PERSPECTIVE	50%
External Exam - SEM 5 - 24-25	50%
Class Participation	50%
Attendance	50%
Internal Assessment Overall	%

CO Coverage



COs	CO1	CO2	CO3	CO4
95	33.5	19.0	31.0	11.5
%	35.3	20.0	32.6	12.1

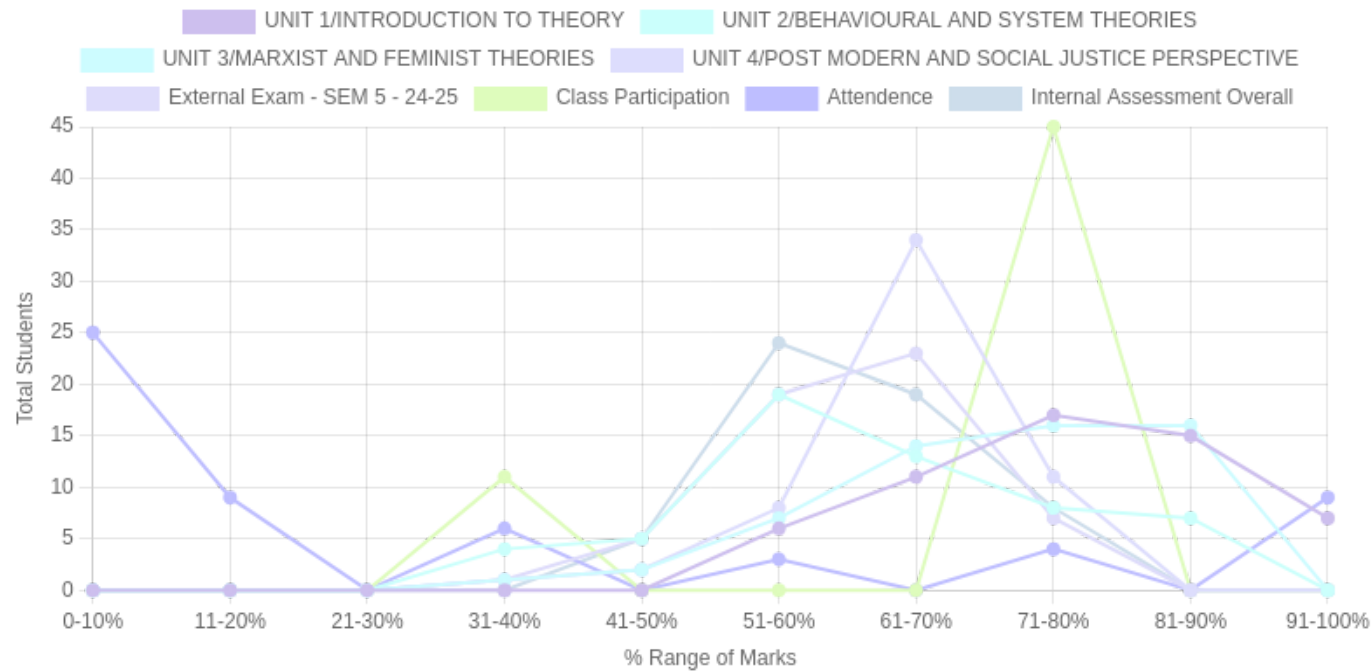
Formative (CIE) Assessments

Sr No	Exam Name	Date	Total Marks	Threshold in %	CO1	CO2	CO3	CO4	CO5	CO6	Avg Attainment
1	UNIT 1/INTRODUCTION TO THEORY	07/11/2024	10	50	3	-	-	3	-	-	3
2	UNIT 2/BEHAVIOURAL AND SYSTEM THEORIES	10/10/2024	10	50	3	-	-	-	-	-	3
3	UNIT 3/MARXIST AND FEMINIST THEORIES	10/10/2024	10	50	-	3	-	-	-	-	3
4	UNIT 4/POST MODERN AND SOCIAL JUSTICE PERSPECTIVE	10/10/2024	10	50	-	-	3	-	-	-	3
6	Class Participation	13/02/2025	2.5	50	-	3	3	-	-	-	3
7	Attendance	05/02/2025	2.5	50	-	1	1	-	-	-	1
8	Internal Assessment Overall	14/02/2025	20		3	3	3	3	-	-	3

Summative (SEE) Assessments

Sr No	Exam Name	Date	Total Marks	Threshold in %	CO1	CO2	CO3	CO4	CO5	CO6	Avg Attainment
5	External Exam - SEM 5 - 24-25	20/10/2024	30	50	2	1	2	1	-	-	1.5

Student % wise Distribution



Sr No	Assessment Title	Type	Total Marks	Avg Marks	Threshold in %	No of Students Scoring										Total Students Above Threshold
						0-10%	11-20%	21-30%	31-40%	41-50%	51-60%	61-70%	71-80%	81-90%	91-100%	
1	UNIT 1/INTRODUCTION TO THEORY	F	10	8.1	50	0	0	0	0	0	6	11	17	15	7	56
2	UNIT 2/BEHAVIOURAL AND SYSTEM THEORIES	F	10	6.66	50	0	0	0	4	5	19	13	8	7	0	52
3	UNIT 3/MARXIST AND FEMINIST THEORIES	F	10	7.6	50	0	0	0	1	2	7	14	16	16	0	55
4	UNIT 4/POST MODERN AND SOCIAL JUSTICE PERSPECTIVE	F	10	6.92	50	0	0	0	1	2	8	34	11	0	0	55
5	External Exam - SEM 5 - 24-25	S	30	18.64	50	0	0	0	1	5	19	23	7	0	0	49
6	Class Participation	F	2.5	1.8	50	0	0	0	11	0	0	0	45	0	0	45
7	Attendance	F	2.5	0.81	50	25	9	0	6	0	3	0	4	0	9	16
8	Internal Assessment Overall	F	20	12.44		0	0	0	0	5	24	19	8	0	0	56

CO Indirect Attainment

Course Exit Survey - BSW - SEM 5

Q1	Understanding the relevance of ecological theory, Person-in-Environment perspective, and family systems theory.
Scale	GOOD <input type="radio"/> BETTER <input type="radio"/> BEST <input type="radio"/>
Q2	Applying anti-oppressive and feminist social work concepts in practice.
Scale	GOOD <input type="radio"/> BETTER <input type="radio"/> BEST <input type="radio"/>
Q3	Analyzing the implications of structural and radical social work in neoliberal policy regimes.
Scale	GOOD <input type="radio"/> BETTER <input type="radio"/> BEST <input type="radio"/>
Q4	Identifying key concepts of behavioral, system, Marxist, and feminist theories.
Scale	GOOD <input type="radio"/> BETTER <input type="radio"/> BEST <input type="radio"/>

CO Attainment

CO	Direct Attainment	Indirect Attainment	Final Attainment	Target	Gap	Justification
CO1	1.99	1	1.79	1.62	0.16	-
CO2	0.3	1	0.44	2.87	-2.43	-
CO3	1.5	1	1.4	2.75	-1.35	-
CO4	1.2	2	1.36	1.5	-0.13	-

Average CO Attainment : 1.24

PO Direct Attainment

Weighted Average Matrix

POs	PO1	PO2	PO3	PO4	PO5	PO6	PO7	PO8
Weighted Avg	2.25	2.25	2.5	2	2	2	2.5	2

Average CO Attainment : 1.24

POs	PO1	PO2	PO3	PO4	PO5	PO6	PO7	PO8
Calculation	2.25 (1.24)/ 3	2.25 (1.24)/ 3	2.5 (1.24)/ 3	2 (1.24)/ 3	2 (1.24)/ 3	2 (1.24)/ 3	2.5 (1.24)/ 3	2 (1.24)/ 3
Direct Attainment	0.93	0.93	1.03	0.83	0.83	0.83	1.03	0.83

