



Theatre Skills

Course Overview

Program Outcomes

- | | |
|------------|---|
| PO1 | Graduates will critically analyze social realities, understand their changing dynamics, and actively engage in processes that contribute to positive social transformation. |
| PO2 | They will demonstrate an in-depth understanding of diverse communities, their unique challenges, and systemic inequalities, and advocate for social justice in their professional practice. |
| PO3 | Graduates will apply appropriate social work methods and strategies to effectively work with individuals, groups, and communities, addressing various social issues. |
| PO4 | They will embody professional social work values and ethics, ensuring integrity, respect, and accountability in all aspects of their practice. |
| PO5 | Graduates will develop problem-solving abilities and intervention strategies tailored to the needs of marginalized and vulnerable populations. |
| PO6 | They will integrate research and evidence-based knowledge to design, implement, and evaluate social work interventions effectively. |
| PO7 | Graduates will exhibit strong communication skills and the ability to collaborate with multidisciplinary teams to address social challenges holistically. |
| PO8 | They will demonstrate a commitment to lifelong learning, staying informed about emerging trends and practices in the field of social work. |

Course Outcomes

- | | |
|-----|---|
| CO1 | Remember the contributions of key figures like Bertolt Brecht and Dario Fo in people's theatre. |
| CO2 | Understand the role of theatre as a medium for social change and its ethical considerations. |
| CO3 | Analyze the different theatre practices, including street plays and folk traditions, for their impact on communities. |
| CO4 | Evaluate the effectiveness of theatre practices in addressing social issues and engaging audiences. |
| CO5 | Apply the acting, improvisation, scriptwriting, and direction techniques to create impactful performances. |

CO-PO Mapping

courseOutcomes	PO1	PO2	PO3	PO4	PO5	PO6	PO7	PO8	Average
COCC 201.1	1	1	2	2	1	1	2	2	1.5
COCC 201.2	2	2	2	2	2	2	2	2	2
COCC 201.3	3	3	3	2	3	3	3	2	2.75
COCC 201.4	3	3	3	3	3	3	3	3	3
COCC 201.5	3	3	3	3	3	3	3	3	3
Average	2.4	2.4	2.6	2.4	2.4	2.4	2.6	2.4	-

CO Attainment Weightages

Direct Attainment	Indirect Attainment
80 %	20 %

CO Assessment Weightages

Formative (CIE)	Summative (SEE)
40 %	60 %

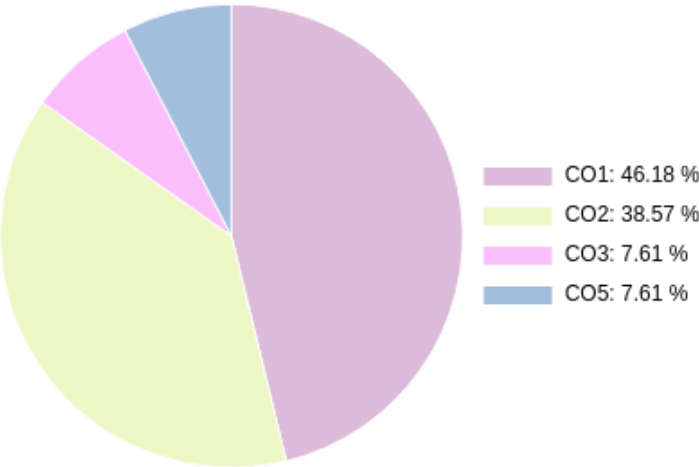
CO targets & Attainment Levels

CO	Target	Direct Attainment levels			Indirect Attainment levels		
		Level 1	Level 2	Level 3	Level 1	Level 2	Level 3
CO1	1.5	0 - 40	41 - 50	51 - 100	0 - 40	41 - 50	51 - 100
CO2	2	0 - 40	41 - 50	51 - 100	0 - 40	41 - 50	51 - 100
CO3	2.75	0 - 40	41 - 50	51 - 100	0 - 40	41 - 50	51 - 100
CO4	3	0 - 40	41 - 50	51 - 100	0 - 40	41 - 50	51 - 100
CO5	3	0 - 40	41 - 50	51 - 100	0 - 40	41 - 50	51 - 100

Exam Results

Exam Name	Threshold
UNIT 1/Introduction to People's Theatre	50%
UNIT 2/Process Involved in Theatre for Social Change	50%
UNIT 3/Workshops	50%
External Exam Sem 3 24-25	50%
Internal Assessment overall	50%

CO Coverage



COs	CO1	CO2	CO3	CO5
70	5.3	32.3	5.3	27.0
%	7.6	46.2	7.6	38.6

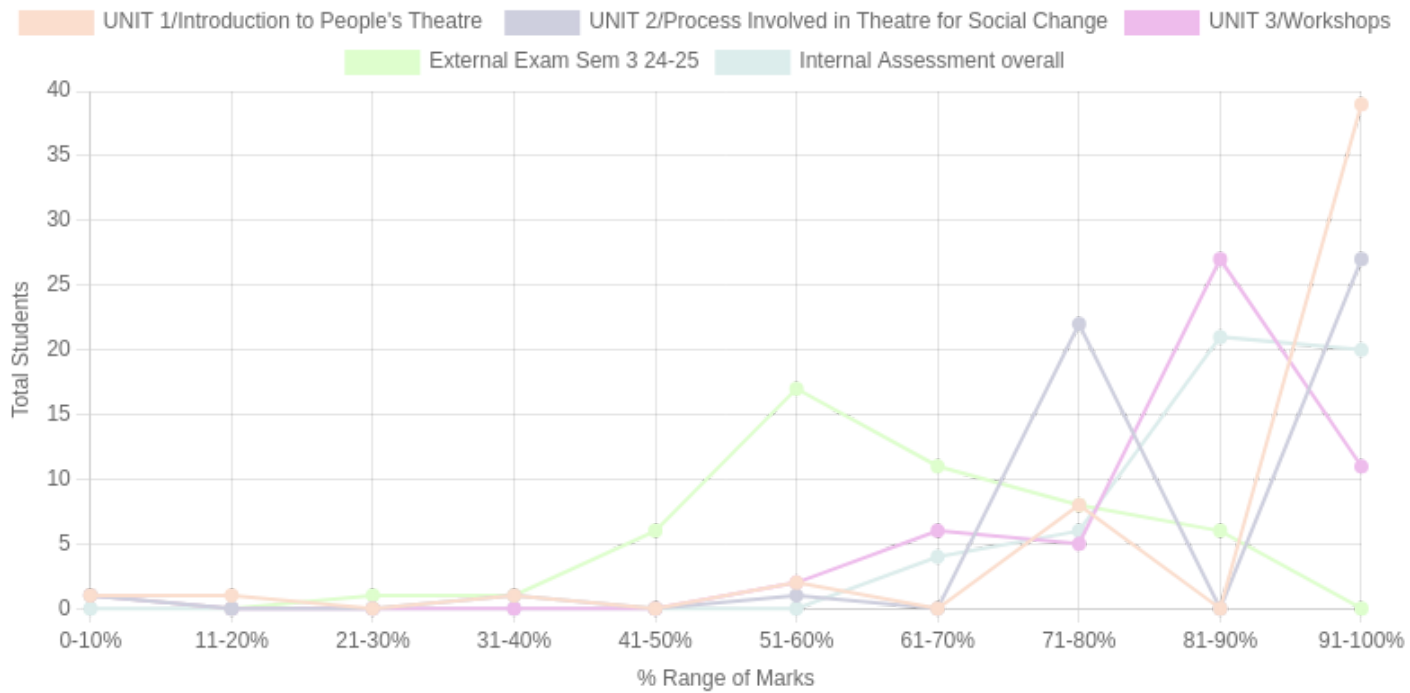
Formative (CIE) Assessments

Sr No	Exam Name	Date	Total Marks	Threshold in %	CO1	CO2	CO3	CO4	CO5	CO6	Avg Attainment
1	UNIT 1/Introduction to People's Theatre	06/12/2024	5	50	-	3	-	-	-	-	3
2	UNIT 2/Process Involved in Theatre for Social Change	06/12/2024	5	50	-	-	-	-	3	-	3
3	UNIT 3/Workshops	06/12/2024	10	50	3	3	3	-	-	-	3
5	Internal Assessment overall	14/02/2025	20	50	-	3	-	-	3	-	3

Summative (SEE) Assessments

Sr No	Exam Name	Date	Total Marks	Threshold in %	CO1	CO2	CO3	CO4	CO5	CO6	Avg Attainment
4	External Exam Sem 3 24-25	15/01/2025	30	50	3	3	3	-	3	-	3

Student % wise Distribution



Sr No	Assessment Title	Type	Total Marks	Avg Marks	Threshold in %	No of Students Scoring										Total Students Above Threshold
						0-10%	11-20%	21-30%	31-40%	41-50%	51-60%	61-70%	71-80%	81-90%	91-100%	
1	UNIT 1/Introduction to People's Theatre	F	5	4.53	50	1	1	0	1	0	2	0	8	0	39	49
2	UNIT 2/Process Involved in Theatre for Social Change	F	5	4.38	50	1	0	0	1	0	1	0	22	0	27	50
3	UNIT 3/Workshops	F	10	8.59	50	1	0	0	0	0	2	6	5	27	11	51
4	External Exam Sem 3 24-25	S	30	18.74	50	1	0	1	1	6	17	11	8	6	0	45
5	Internal Assessment overall	F	20	17.8	50	0	0	0	0	0	0	4	6	21	20	51

CO Indirect Attainment

Course Exit Survey - BSW - SEM 3

Q1	1. Were you able to remember the contributions of key figures like Bertolt Brecht and Dario Fo in people's theatre?
Scale	Strongly Agree <input type="radio"/> Agree <input type="radio"/> Disagree <input type="radio"/>
Q2	2. Were you able to understand the role of theatre as a medium for social change and its ethical considerations?
Scale	Strongly Agree <input type="radio"/> Agree <input type="radio"/> Disagree <input type="radio"/>
Q3	3. Were you able to analyze different theatre practices, including street plays and folk traditions, for their impact on communities?
Scale	Strongly Agree <input type="radio"/> Agree <input type="radio"/> Disagree <input type="radio"/>
Q4	4. Were you able to evaluate the effectiveness of theatre practices in addressing social issues and engaging audiences?
Scale	Strongly Agree <input type="radio"/> Agree <input type="radio"/> Disagree <input type="radio"/>
Q5	5. Were you able to apply acting, improvisation, scriptwriting, and direction techniques to create impactful performances?
Scale	Strongly Agree <input type="radio"/> Agree <input type="radio"/> Disagree <input type="radio"/>
Q6	6. Were you satisfied with the overall relevance and applicability of the course content to the stated learning outcomes?
Scale	Strongly Agree <input type="radio"/> Agree <input type="radio"/> Disagree <input type="radio"/>

CO Attainment

CO	Direct Attainment	Indirect Attainment	Final Attainment	Target	Gap	Justification
CO1	3	1	2.6	1.5	1.1	-
CO2	2.99	1	2.59	2	0.58	-
CO3	3	1	2.6	2.75	-0.14	-

CO	Direct Attainment	Indirect Attainment	Final Attainment	Target	Gap	Justification
CO5	3	1	2.6	3	-0.39	-

Average CO Attainment : 2.59

PO Direct Attainment

Weighted Average Matrix

POs	PO1	PO2	PO3	PO4	PO5	PO6	PO7	PO8
Weighted Avg	2.4	2.4	2.6	2.4	2.4	2.4	2.6	2.4

Average CO Attainment : 2.59

POs	PO1	PO2	PO3	PO4	PO5	PO6	PO7	PO8
Calculation	2.4 (2.59)/ 3	2.4 (2.59)/ 3	2.6 (2.59)/ 3	2.4 (2.59)/ 3	2.4 (2.59)/ 3	2.4 (2.59)/ 3	2.6 (2.59)/ 3	2.4 (2.59)/ 3
Direct Attainment	2.07	2.07	2.24	2.07	2.07	2.07	2.24	2.07

COURSE OVERVIEW | BSW



Contemporary Development Studies

Course Overview

Program Outcomes

- | | |
|------------|---|
| PO1 | Graduates will critically analyze social realities, understand their changing dynamics, and actively engage in processes that contribute to positive social transformation. |
| PO2 | They will demonstrate an in-depth understanding of diverse communities, their unique challenges, and systemic inequalities, and advocate for social justice in their professional practice. |
| PO3 | Graduates will apply appropriate social work methods and strategies to effectively work with individuals, groups, and communities, addressing various social issues. |
| PO4 | They will embody professional social work values and ethics, ensuring integrity, respect, and accountability in all aspects of their practice. |
| PO5 | Graduates will develop problem-solving abilities and intervention strategies tailored to the needs of marginalized and vulnerable populations. |
| PO6 | They will integrate research and evidence-based knowledge to design, implement, and evaluate social work interventions effectively. |
| PO7 | Graduates will exhibit strong communication skills and the ability to collaborate with multidisciplinary teams to address social challenges holistically. |
| PO8 | They will demonstrate a commitment to lifelong learning, staying informed about emerging trends and practices in the field of social work. |

Course Outcomes

- | | |
|------------|---|
| CO1 | To analyze approaches to development, contemporary development concern, and measurement tool of human development |
| CO2 | To apply the measurement tool of human development and government policies in the field. |
| CO3 | To analyse the contemporary development issues. |
| CO4 | To evaluate policies based on policy development framework and strategies to effectively implement the policies. |

CO-PO Mapping

courseOutcomes	PO1	PO2	PO3	PO4	PO5	PO6	PO7	PO8	Average
COMinor 201.1	3	2	1	2	2	2	2	1	1.87
COMinor 201.2	3	2	2	2	2	3	2	2	2.25
COMinor 201.3	3	3	2	2	3	3	3	2	2.62
COMinor 201.4	3	3	3	3	3	3	2	2	2.75
Average	3	2.5	2	2.25	2.5	2.75	2.25	1.75	-

CO Attainment Weightages

Direct Attainment	Indirect Attainment
80 %	20 %

CO Assessment Weightages

Formative (CIE)	Summative (SEE)
40 %	60 %

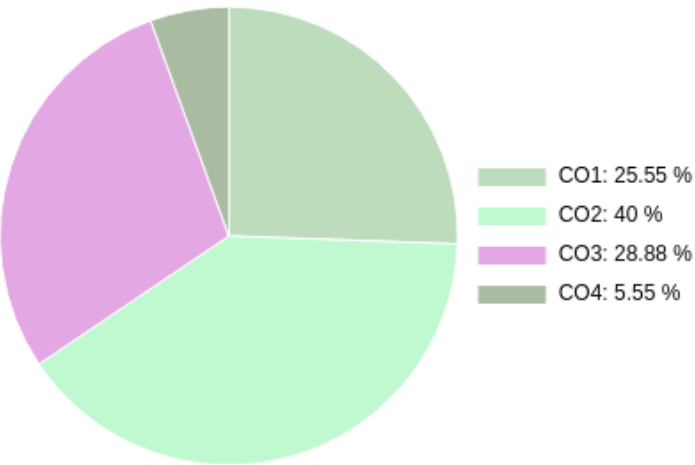
CO targets & Attainment Levels

CO	Target	Direct Attainment levels			Indirect Attainment levels		
		Level 1	Level 2	Level 3	Level 1	Level 2	Level 3
CO1	1.87	0 - 40	41 - 50	51 - 100	0 - 40	41 - 50	51 - 100
CO2	2.25	0 - 40	41 - 50	51 - 100	0 - 40	41 - 50	51 - 100
CO3	2.62	0 - 40	41 - 50	51 - 100	0 - 40	41 - 50	51 - 100
CO4	2.75	0 - 40	41 - 50	51 - 100	0 - 40	41 - 50	51 - 100

Exam Results

Exam Name	Threshold
External Exam Sem 3 24-25	50%
UNIT 1/Contemporary Development Studies	50%
UNIT 2/Contemporary Development Studies	50%
UNIT 3/Contemporary Development Studies	50%
UNIT 4/Contemporary Development Studies	50%
Internal Assessment overall	50%

CO Coverage



COs	CO1	CO2	CO3	CO4
180	46.0	72.0	52.0	10.0
%	25.6	40.0	28.9	5.5

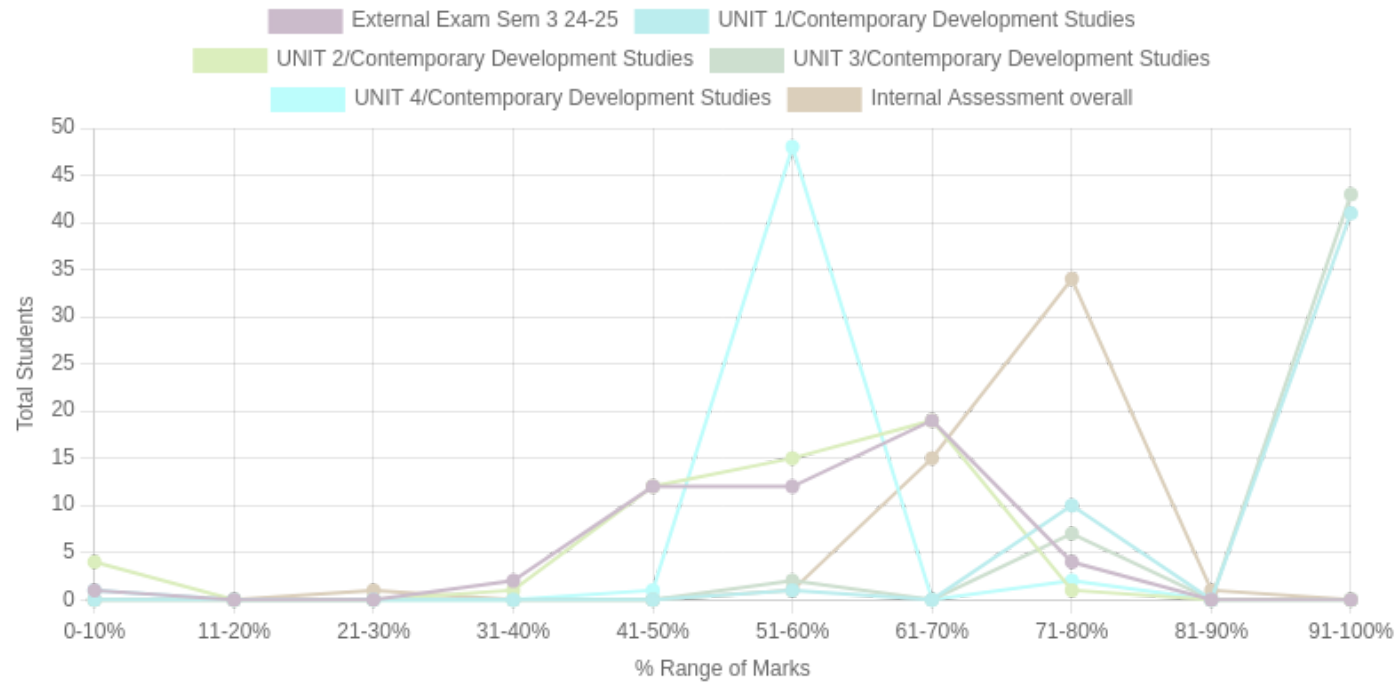
Formative (CIE) Assessments

Sr No	Exam Name	Date	Total Marks	Threshold in %	CO1	CO2	CO3	CO4	CO5	CO6	Avg Attainment
2	UNIT 1/Contemporary Development Studies	04/02/2025	20	50	3	3	-	-	-	-	3
3	UNIT 2/Contemporary Development Studies	04/02/2025	20	50	3	3	-	-	-	-	3
4	UNIT 3/Contemporary Development Studies	04/02/2025	20	50	-	3	3	-	-	-	3
5	UNIT 4/Contemporary Development Studies	04/02/2025	20	50	-	3	3	-	-	-	3
6	Internal Assessment overall	14/02/2025	40	50	3	3	3	3	-	-	3

Summative (SEE) Assessments

Sr No	Exam Name	Date	Total Marks	Threshold in %	CO1	CO2	CO3	CO4	CO5	CO6	Avg Attainment
1	External Exam Sem 3 24-25	15/01/2025	60	50	3	3	3	-	-	-	3

Student % wise Distribution



Sr No	Assessment Title	Type	Total Marks	Avg Marks	Threshold in %	No of Students Scoring										Total Students Above Threshold
						0-10%	11-20%	21-30%	31-40%	41-50%	51-60%	61-70%	71-80%	81-90%	91-100%	
1	External Exam Sem 3 24-25	S	60	34.28	50	1	0	0	2	12	12	19	4	0	0	36
2	UNIT 1/Contemporary Development Studies	F	20	19.07	50	0	0	0	0	0	1	0	10	0	41	52
3	UNIT 2/Contemporary Development Studies	F	20	11.34	50	4	0	0	1	12	15	19	1	0	0	47
4	UNIT 3/Contemporary Development Studies	F	20	19.15	50	0	0	0	0	0	2	0	7	0	43	52
5	UNIT 4/Contemporary Development Studies	F	20	11.71	50	1	0	0	0	1	48	0	2	0	0	51
6	Internal Assessment overall	F	40	28.25	50	0	0	1	0	0	1	15	34	1	0	51

CO Indirect Attainment

Course Exit Survey - BSW - SEM 3

Q1	1. Were you able to analyze approaches to development, contemporary development concerns, and measurement tools of human development?
Scale	Strongly Agree <input type="radio"/> Agree <input type="radio"/> Disagree <input type="radio"/>
Q2	2. Were you able to apply the measurement tools of human development and government policies in the field?
Scale	Strongly Agree <input type="radio"/> Agree <input type="radio"/> Disagree <input type="radio"/>
Q3	3. Were you able to analyze contemporary development issues?
Scale	Strongly Agree <input type="radio"/> Agree <input type="radio"/> Disagree <input type="radio"/>
Q4	4. Were you able to evaluate policies based on the policy development framework and strategies to effectively implement the policies?
Scale	Strongly Agree <input type="radio"/> Agree <input type="radio"/> Disagree <input type="radio"/>
Q5	5. Were you satisfied with the overall relevance and applicability of the course content to the stated learning outcomes?
Scale	Strongly Agree <input type="radio"/> Agree <input type="radio"/> Disagree <input type="radio"/>

CO Attainment

CO	Direct Attainment	Indirect Attainment	Final Attainment	Target	Gap	Justification
CO1	2.99	1	2.59	1.87	0.71	-
CO2	3	1	2.6	2.25	0.35	-
CO3	2.99	1	2.59	2.62	-0.03	-
CO4	1.2	1	1.15	2.75	-1.6	-

Average CO Attainment : 2.23

PO Direct Attainment

Weighted Average Matrix

POs	PO1	PO2	PO3	PO4	PO5	PO6	PO7	PO8
Weighted Avg	3	2.5	2	2.25	2.5	2.75	2.25	1.75

Average CO Attainment : 2.23

POs	PO1	PO2	PO3	PO4	PO5	PO6	PO7	PO8
Calculation	3 (2.23)/ 3	2.5 (2.23)/ 3	2 (2.23)/ 3	2.25 (2.23)/ 3	2.5 (2.23)/ 3	2.75 (2.23)/ 3	2.25 (2.23)/ 3	1.75 (2.23)/ 3
Direct Attainment	2.23	1.86	1.49	1.67	1.86	2.04	1.67	1.30

COURSE OVERVIEW | BSW



Hindi

Course Overview

Program Outcomes

- | | |
|------------|---|
| PO1 | Graduates will critically analyze social realities, understand their changing dynamics, and actively engage in processes that contribute to positive social transformation. |
| PO2 | They will demonstrate an in-depth understanding of diverse communities, their unique challenges, and systemic inequalities, and advocate for social justice in their professional practice. |
| PO3 | Graduates will apply appropriate social work methods and strategies to effectively work with individuals, groups, and communities, addressing various social issues. |
| PO4 | They will embody professional social work values and ethics, ensuring integrity, respect, and accountability in all aspects of their practice. |
| PO5 | Graduates will develop problem-solving abilities and intervention strategies tailored to the needs of marginalized and vulnerable populations. |
| PO6 | They will integrate research and evidence-based knowledge to design, implement, and evaluate social work interventions effectively. |
| PO7 | Graduates will exhibit strong communication skills and the ability to collaborate with multidisciplinary teams to address social challenges holistically. |
| PO8 | They will demonstrate a commitment to lifelong learning, staying informed about emerging trends and practices in the field of social work. |

Course Outcomes

- | | |
|------------|---|
| CO1 | To remember basic Hindi grammar rules to enhance their foundational language skills. |
| CO2 | To understand the importance of Hindi in professional communication, especially in social work, for effective engagement. |
| CO3 | To apply reading comprehension skills to analyze articles, periodicals, and literary texts for critical insights. |
| CO4 | To analyze the cultural and social themes in Hindi literature and their relevance to daily life for deeper understanding. |
| CO5 | To evaluate personal language proficiency and areas for improvement in speaking, reading, and writing for self-enhancement. |

CO-PO Mapping

courseOutcomes	PO1	PO2	PO3	PO4	PO5	PO6	PO7	PO8	Average
COAEC 201.1	0	0	0	0	1	0	1	0	0.25
COAEC 201.2	1	1	1	1	1	1	2	2	1.25
COAEC 201.3	2	1	2	1	2	2	2	2	1.75
COAEC 201.4	3	2	1	2	2	2	2	2	2
COAEC 201.5	2	2	1	1	1	2	3	3	1.87
Average	1.6	1.2	1	1	1.4	1.4	2	1.8	-

CO Attainment Weightages

Direct Attainment	Indirect Attainment
80 %	20 %

CO Assessment Weightages

Formative (CIE)	Summative (SEE)
40 %	60 %

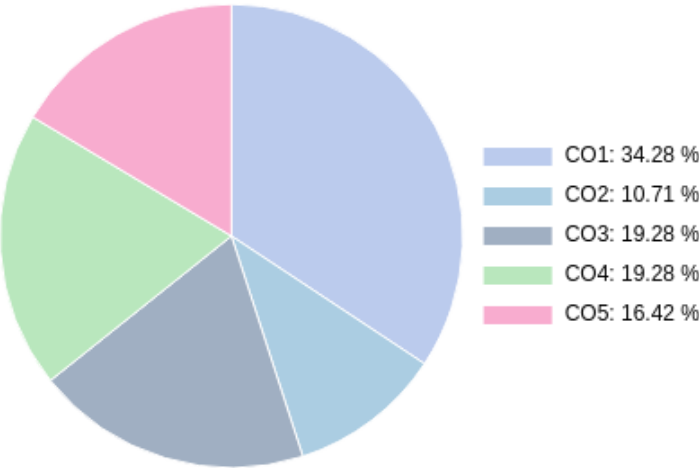
CO targets & Attainment Levels

CO	Target	Direct Attainment levels			Indirect Attainment levels		
		Level 1	Level 2	Level 3	Level 1	Level 2	Level 3
CO1	0.25	0 - 40	41 - 50	51 - 100	0 - 40	41 - 50	51 - 100
CO2	1.25	0 - 40	41 - 50	51 - 100	0 - 40	41 - 50	51 - 100
CO3	1.75	0 - 40	41 - 50	51 - 100	0 - 40	41 - 50	51 - 100
CO4	2	0 - 40	41 - 50	51 - 100	0 - 40	41 - 50	51 - 100
CO5	1.87	0 - 40	41 - 50	51 - 100	0 - 40	41 - 50	51 - 100

Exam Results

Exam Name	Threshold
UNIT 1/KABIR DAAS	50%
UNIT 2/SHORT QUESTIONS	50%
External Exam Sem 3 24-25	50%
Internal Assessment overall	50%

CO Coverage



COs	CO1	CO2	CO3	CO4	CO5
70	13.5	13.5	11.5	24.0	7.5
%	19.3	19.3	16.4	34.3	10.7

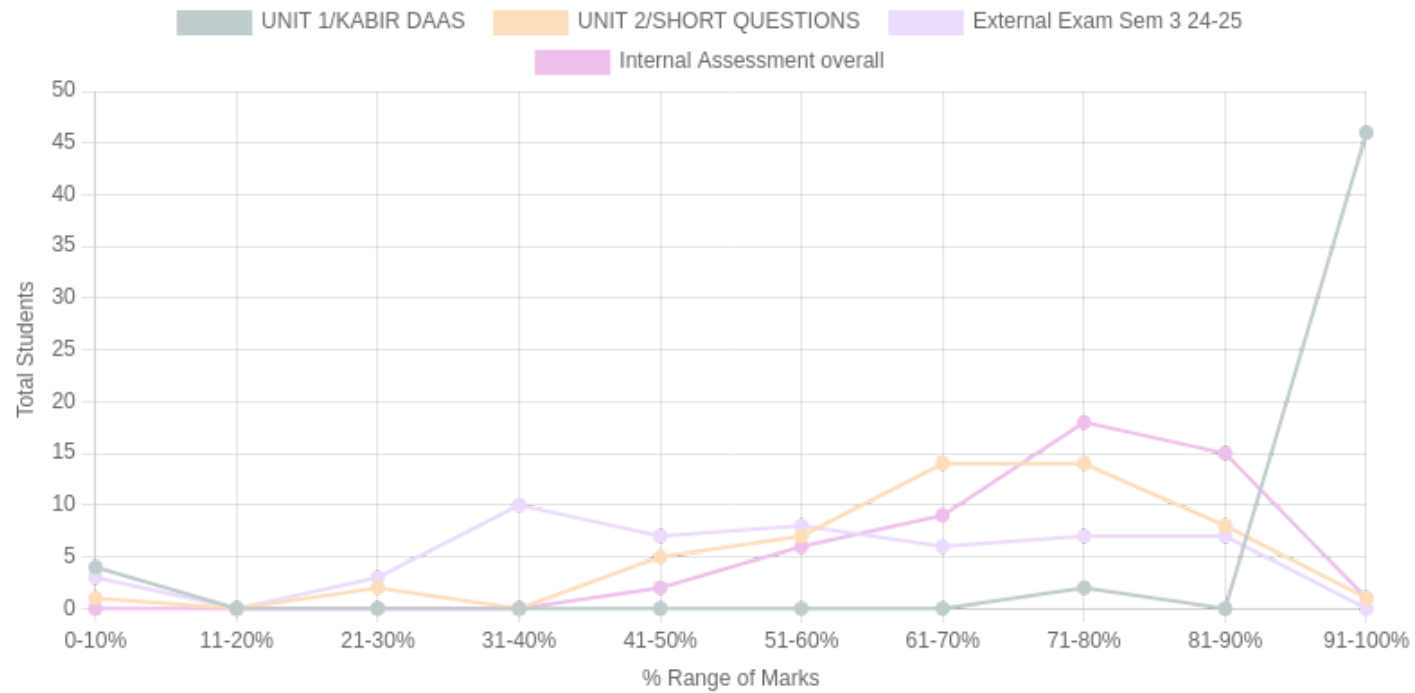
Formative (CIE) Assessments

Sr No	Exam Name	Date	Total Marks	Threshold in %	CO1	CO2	CO3	CO4	CO5	CO6	Avg Attainment
1	UNIT 1/KABIR DAAS	06/12/2024	5	50	-	-	-	3	3	-	3
2	UNIT 2/SHORT QUESTIONS	05/12/2024	15	50	-	-	-	3	3	-	3
4	Internal Assessment overall	14/02/2025	20	50	-	-	3	3	-	-	3

Summative (SEE) Assessments

Sr No	Exam Name	Date	Total Marks	Threshold in %	CO1	CO2	CO3	CO4	CO5	CO6	Avg Attainment
3	External Exam Sem 3 24-25	15/01/2025	30	50	3	3	3	3	-	-	3

Student % wise Distribution



Sr No	Assessment Title	Type	Total Marks	Avg Marks	Threshold in %	No of Students Scoring										Total Students Above Threshold
						0-10%	11-20%	21-30%	31-40%	41-50%	51-60%	61-70%	71-80%	81-90%	91-100%	
1	UNIT 1/KABIR DAAS	F	5	4.57	50	4	0	0	0	0	0	0	2	0	46	48
2	UNIT 2/SHORT QUESTIONS	F	15	10.06	50	1	0	2	0	5	7	14	14	8	1	45
3	External Exam Sem 3 24-25	S	30	16.34	50	3	0	3	10	7	8	6	7	7	0	29
4	Internal Assessment overall	F	20	15.09	50	0	0	0	0	2	6	9	18	15	1	49

CO Attainment

CO	Direct Attainment	Indirect Attainment	Final Attainment	Target	Gap	Justification
CO1	1.79	0	1.43	0.25	1.18	-
CO2	1.79	0	1.43	1.25	0.17	-
CO3	3	0	2.4	1.75	0.64	-
CO4	2.99	0	2.39	2	0.39	-
CO5	1.2	0	0.96	1.87	-0.91	-

Average CO Attainment : 1.72

PO Direct Attainment

Weighted Average Matrix

POs	PO1	PO2	PO3	PO4	PO5	PO6	PO7	PO8
Weighted Avg	1.6	1.2	1	1	1.4	1.4	2	1.8

Average CO Attainment : 1.72

POs	PO1	PO2	PO3	PO4	PO5	PO6	PO7	PO8
Calculation	1.6 (1.72)/ 3	1.2 (1.72)/ 3	1 (1.72)/ 3	1 (1.72)/ 3	1.4 (1.72)/ 3	1.4 (1.72)/ 3	2 (1.72)/ 3	1.8 (1.72)/ 3
Direct Attainment	0.92	0.69	0.57	0.57	0.80	0.80	1.15	1.03

COURSE OVERVIEW | BSW



Introduction To Economics

Course Overview

Program Outcomes

- | | |
|------------|---|
| PO1 | Graduates will critically analyze social realities, understand their changing dynamics, and actively engage in processes that contribute to positive social transformation. |
| PO2 | They will demonstrate an in-depth understanding of diverse communities, their unique challenges, and systemic inequalities, and advocate for social justice in their professional practice. |
| PO3 | Graduates will apply appropriate social work methods and strategies to effectively work with individuals, groups, and communities, addressing various social issues. |
| PO4 | They will embody professional social work values and ethics, ensuring integrity, respect, and accountability in all aspects of their practice. |
| PO5 | Graduates will develop problem-solving abilities and intervention strategies tailored to the needs of marginalized and vulnerable populations. |
| PO6 | They will integrate research and evidence-based knowledge to design, implement, and evaluate social work interventions effectively. |
| PO7 | Graduates will exhibit strong communication skills and the ability to collaborate with multidisciplinary teams to address social challenges holistically. |
| PO8 | They will demonstrate a commitment to lifelong learning, staying informed about emerging trends and practices in the field of social work. |

Course Outcomes

- | | |
|------------|---|
| CO1 | Remember definitions and basic concepts of economics, including demand, supply, and market structures. |
| CO2 | Understanding the factors of production (land, labor, capital) and their characteristics |
| CO3 | Analyzing the theories of national income, rent, wages, interest, and profit |
| CO4 | Evaluate the effectiveness of economic policies addressing challenges in primary, secondary, and tertiary sectors in India. |
| CO5 | Apply the laws of demand and supply to interpret economic behavior. |

CO-PO Mapping

courseOutcomes	PO1	PO2	PO3	PO4	PO5	PO6	PO7	PO8	Average
COOE 201.1	2	2	1	2	1	1	1	1	1.37
COOE 201.2	2	2	2	2	2	2	2	2	2
COOE 201.3	3	2	3	2	3	2	3	2	2.5
COOE 201.4	3	3	3	3	3	3	3	3	3
COOE 201.5	2	2	3	3	2	2	2	2	2.25
Average	2.4	2.2	2.4	2.4	2.2	2	2.2	2	-

CO Attainment Weightages

Direct Attainment	Indirect Attainment
80 %	20 %

CO Assessment Weightages

Formative (CIE)	Summative (SEE)
40 %	60 %

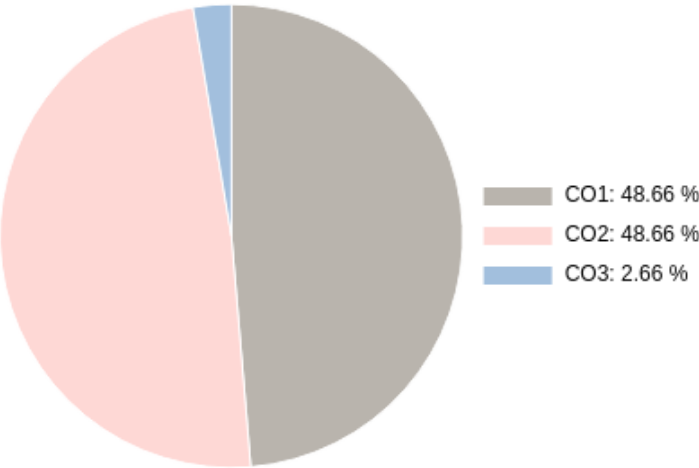
CO targets & Attainment Levels

CO	Target	Direct Attainment levels			Indirect Attainment levels		
		Level 1	Level 2	Level 3	Level 1	Level 2	Level 3
CO1	1.37	0 - 40	41 - 50	51 - 100	0 - 40	41 - 50	51 - 100
CO2	2	0 - 40	41 - 50	51 - 100	0 - 40	41 - 50	51 - 100
CO3	2.5	0 - 40	41 - 50	51 - 100	0 - 40	41 - 50	51 - 100
CO4	3	0 - 40	41 - 50	51 - 100	0 - 40	41 - 50	51 - 100
CO5	2.25	0 - 40	41 - 50	51 - 100	0 - 40	41 - 50	51 - 100

Exam Results

Exam Name	Threshold
UNIT 1/What is Economics?	50%
UNIT 2/Family and Firm	50%
UNIT 3/Market and Nation	50%
External Exam Sem 3 24-25	50%
Internal Assessment overall	50%

CO Coverage



COs	CO1	CO2	CO3
75	36.5	36.5	2.0
%	48.7	48.7	2.7

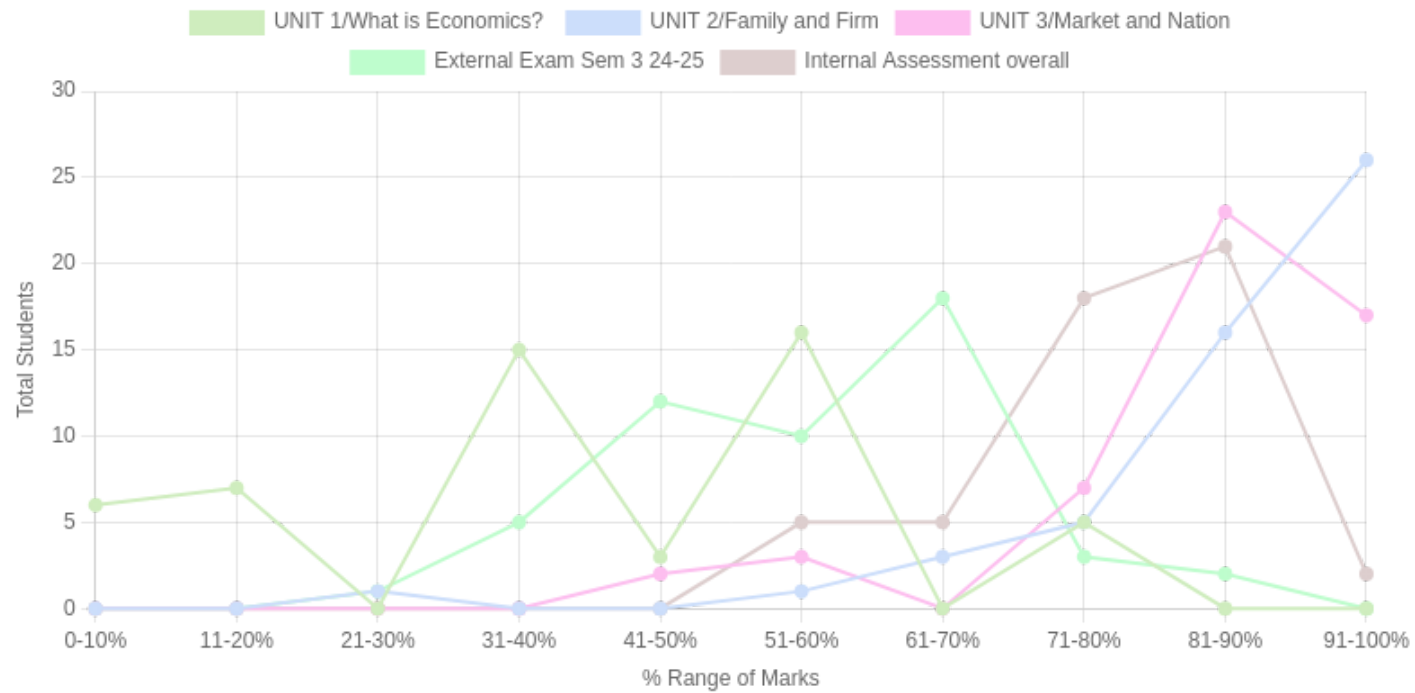
Formative (CIE) Assessments

Sr No	Exam Name	Date	Total Marks	Threshold in %	CO1	CO2	CO3	CO4	CO5	CO6	Avg Attainment
1	UNIT 1/What is Economics?	05/12/2024	5	50	2	2	-	-	-	-	2
2	UNIT 2/Family and Firm	05/12/2024	10	50	3	3	-	-	-	-	3
3	UNIT 3/Market and Nation	04/12/2024	10	50	3	3	-	-	-	-	3
5	Internal Assessment overall	14/02/2025	20	50	3	3	-	-	-	-	3

Summative (SEE) Assessments

Sr No	Exam Name	Date	Total Marks	Threshold in %	CO1	CO2	CO3	CO4	CO5	CO6	Avg Attainment
4	External Exam Sem 3 24-25	15/01/2025	30	50	3	3	3	-	-	-	3

Student % wise Distribution



Sr No	Assessment Title	Type	Total Marks	Avg Marks	Threshold in %	No of Students Scoring										Total Students Above Threshold
						0-10%	11-20%	21-30%	31-40%	41-50%	51-60%	61-70%	71-80%	81-90%	91-100%	
1	UNIT 1/What is Economics?	F	5	2.16	50	6	7	0	15	3	16	0	5	0	0	24
2	UNIT 2/Family and Firm	F	10	9.11	50	0	0	1	0	0	1	3	5	16	26	51
3	UNIT 3/Market and Nation	F	10	8.86	50	0	0	0	0	2	3	0	7	23	17	52
4	External Exam Sem 3 24-25	S	30	17.38	50	0	0	1	5	12	10	18	3	2	0	37
5	Internal Assessment overall	F	20	15.84	50	0	0	0	0	0	5	5	18	21	2	51

CO Indirect Attainment

Course Exit Survey - BSW - SEM 3

Q1	1. Were you able to recall definitions and basic concepts of economics, including demand, supply, and market structures?
Scale	Strongly Agree <input type="radio"/> Agree <input type="radio"/> Disagree <input type="radio"/>
Q2	2. Were you able to understand the factors of production (land, labor, capital) and their characteristics?
Scale	Strongly Agree <input type="radio"/> Agree <input type="radio"/> Disagree <input type="radio"/>
Q3	3. Were you able to analyze the theories of national income, rent, wages, interest, and profit?
Scale	Strongly Agree <input type="radio"/> Agree <input type="radio"/> Disagree <input type="radio"/>
Q4	4. Were you able to evaluate the effectiveness of economic policies addressing challenges in the primary, secondary, and tertiary sectors in India?
Scale	Strongly Agree <input type="radio"/> Agree <input type="radio"/> Disagree <input type="radio"/>
Q5	5. Were you able to apply the laws of demand and supply to interpret economic behavior?
Scale	Strongly Agree <input type="radio"/> Agree <input type="radio"/> Disagree <input type="radio"/>
Q6	6. Were you satisfied with the overall relevance and applicability of the course content to the stated learning outcomes?
Scale	Strongly Agree <input type="radio"/> Agree <input type="radio"/> Disagree <input type="radio"/>

CO Attainment

CO	Direct Attainment	Indirect Attainment	Final Attainment	Target	Gap	Justification
CO1	2.9	1	2.52	1.37	1.14	-
CO2	2.9	1	2.52	2	0.52	-
CO3	1.79	1	1.63	2.5	-0.87	-

Average CO Attainment : 2.22

PO Direct Attainment

Weighted Average Matrix

POs	PO1	PO2	PO3	PO4	PO5	PO6	PO7	PO8
Weighted Avg	2.4	2.2	2.4	2.4	2.2	2	2.2	2

Average CO Attainment : 2.22

POs	PO1	PO2	PO3	PO4	PO5	PO6	PO7	PO8
Calculation	$2.4 (2.22)/ 3$	$2.2 (2.22)/ 3$	$2.4 (2.22)/ 3$	$2.4 (2.22)/ 3$	$2.2 (2.22)/ 3$	$2 (2.22)/ 3$	$2.2 (2.22)/ 3$	$2 (2.22)/ 3$
Direct Attainment	1.78	1.63	1.78	1.78	1.63	1.48	1.63	1.48

COURSE OVERVIEW | BSW



Participatory Rural Appraisal

Course Overview

Program Outcomes

- | | |
|------------|---|
| PO1 | Graduates will critically analyze social realities, understand their changing dynamics, and actively engage in processes that contribute to positive social transformation. |
| PO2 | They will demonstrate an in-depth understanding of diverse communities, their unique challenges, and systemic inequalities, and advocate for social justice in their professional practice. |
| PO3 | Graduates will apply appropriate social work methods and strategies to effectively work with individuals, groups, and communities, addressing various social issues. |
| PO4 | They will embody professional social work values and ethics, ensuring integrity, respect, and accountability in all aspects of their practice. |
| PO5 | Graduates will develop problem-solving abilities and intervention strategies tailored to the needs of marginalized and vulnerable populations. |
| PO6 | They will integrate research and evidence-based knowledge to design, implement, and evaluate social work interventions effectively. |
| PO7 | Graduates will exhibit strong communication skills and the ability to collaborate with multidisciplinary teams to address social challenges holistically. |
| PO8 | They will demonstrate a commitment to lifelong learning, staying informed about emerging trends and practices in the field of social work. |

Course Outcomes

- | | |
|------------|---|
| CO1 | Remember the definitions, principles, and historical evolution of PRA and related participatory methods. |
| CO2 | Understand the contextual relevance of participatory approaches in social work and rural settings |
| CO3 | Analyze the rural realities and challenges through mapping exercises like Transect Walk and Resource Mapping. |
| CO4 | Evaluate the effectiveness of PRA tools and methodologies in addressing rural challenges. |
| CO5 | Apply the PRA tools to engage with communities, gather data, and facilitate participatory decision-making. |

CO-PO Mapping

courseOutcomes	PO1	PO2	PO3	PO4	PO5	PO6	PO7	PO8	Average
COFP 201.1	2	2	1	3	1	1	2	1	1.62
COFP 201.2	3	3	2	2	2	2	2	2	2.25
COFP 201.3	3	3	3	2	3	3	3	2	2.75
COFP 201.4	2	2	2	3	2	2	2	1	2
COFP 201.5	3	3	3	3	3	3	3	2	2.87
Average	2.6	2.6	2.2	2.6	2.2	2.2	2.4	1.6	-

CO Attainment Weightages

Direct Attainment	Indirect Attainment
80 %	20 %

CO Assessment Weightages

Formative (CIE)	Summative (SEE)
40 %	60 %

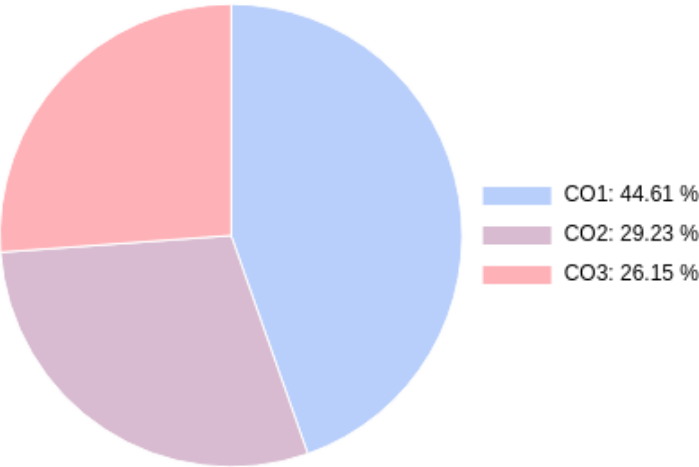
CO targets & Attainment Levels

CO	Target	Direct Attainment levels			Indirect Attainment levels		
		Level 1	Level 2	Level 3	Level 1	Level 2	Level 3
CO1	1.62	0 - 40	41 - 50	51 - 100	0 - 40	41 - 50	51 - 100
CO2	2.25	0 - 40	41 - 50	51 - 100	0 - 40	41 - 50	51 - 100
CO3	2.75	0 - 40	41 - 50	51 - 100	0 - 40	41 - 50	51 - 100
CO4	2	0 - 40	41 - 50	51 - 100	0 - 40	41 - 50	51 - 100
CO5	2.87	0 - 40	41 - 50	51 - 100	0 - 40	41 - 50	51 - 100

Exam Results

Exam Name	Threshold
External Exam Sem 3 24-25	50%
UNIT 1/Participatory Rural Appraisal	50%
UNIT 2/Participatory Rural Appraisal	50%
UNIT 3/Participatory Rural Appraisal	50%
Internal Assessment overall	50%

CO Coverage



COs	CO1	CO2	CO3
65	29.0	17.0	19.0
%	44.6	26.1	29.2

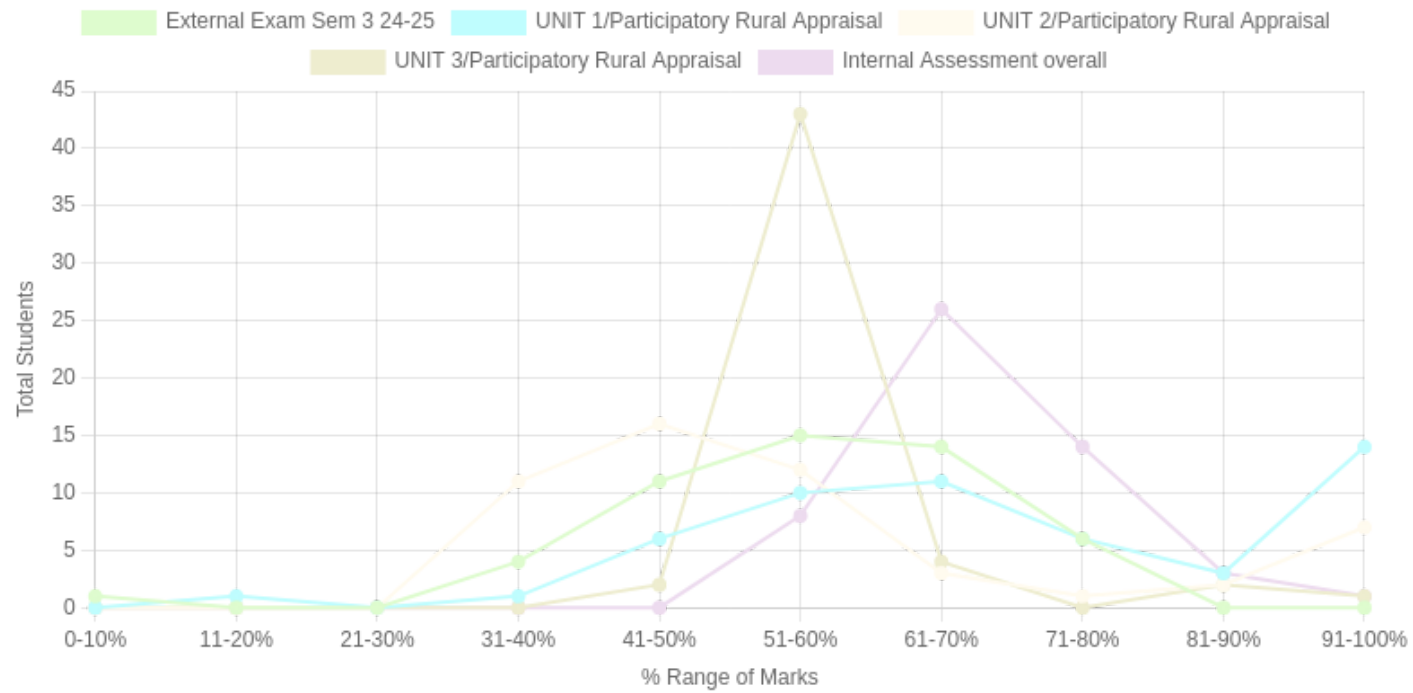
Formative (CIE) Assessments

Sr No	Exam Name	Date	Total Marks	Threshold in %	CO1	CO2	CO3	CO4	CO5	CO6	Avg Attainment
2	UNIT 1/Participatory Rural Appraisal	04/02/2025	5	50	3	-	-	-	-	-	3
3	UNIT 2/Participatory Rural Appraisal	04/02/2025	5	50	-	3	-	-	-	-	3
4	UNIT 3/Participatory Rural Appraisal	04/02/2025	5	50	-	-	3	-	-	-	3
5	Internal Assessment overall	14/02/2025	20	50	3	3	-	-	-	-	3

Summative (SEE) Assessments

Sr No	Exam Name	Date	Total Marks	Threshold in %	CO1	CO2	CO3	CO4	CO5	CO6	Avg Attainment
1	External Exam Sem 3 24-25	15/01/2025	30	50	3	3	3	-	-	-	3

Student % wise Distribution



Sr No	Assessment Title	Type	Total Marks	Avg Marks	Threshold in %	No of Students Scoring										Total Students Above Threshold
						0-10%	11-20%	21-30%	31-40%	41-50%	51-60%	61-70%	71-80%	81-90%	91-100%	
1	External Exam Sem 3 24-25	S	30	17.05	50	1	0	0	4	11	15	14	6	0	0	39
2	UNIT 1/Participatory Rural Appraisal	F	5	3.73	50	0	1	0	1	6	10	11	6	3	14	50
3	UNIT 2/Participatory Rural Appraisal	F	5	3	50	0	0	0	11	16	12	3	1	2	7	41
4	UNIT 3/Participatory Rural Appraisal	F	5	3.11	50	0	0	0	0	2	43	4	0	2	1	52
5	Internal Assessment overall	F	20	13.9	50	0	0	0	0	0	8	26	14	3	1	52

CO Indirect Attainment

Course Exit Survey - BSW - SEM 3

Q1	1. Were you able to remember the definitions, principles, and historical evolution of PRA and related participatory methods?
Scale	Strongly Agree <input type="radio"/> Agree <input type="radio"/> Disagree <input type="radio"/>
Q2	2. Were you able to understand the contextual relevance of participatory approaches in social work and rural settings?
Scale	Strongly Agree <input type="radio"/> Agree <input type="radio"/> Disagree <input type="radio"/>
Q3	3. Were you able to analyze rural realities and challenges through mapping exercises like Transect Walk and Resource Mapping?
Scale	Strongly Agree <input type="radio"/> Agree <input type="radio"/> Disagree <input type="radio"/>
Q4	4. Were you able to evaluate the effectiveness of PRA tools and methodologies in addressing rural challenges?
Scale	Strongly Agree <input type="radio"/> Agree <input type="radio"/> Disagree <input type="radio"/>
Q5	5. Were you able to apply PRA tools to engage with communities, gather data, and facilitate participatory decision-making?
Scale	Strongly Agree <input type="radio"/> Agree <input type="radio"/> Disagree <input type="radio"/>
Q6	6. Were you satisfied with the overall relevance and applicability of the course content to the stated learning outcomes?
Scale	Strongly Agree <input type="radio"/> Agree <input type="radio"/> Disagree <input type="radio"/>

CO Attainment

CO	Direct Attainment	Indirect Attainment	Final Attainment	Target	Gap	Justification
CO1	3	1	2.6	1.62	0.98	-
CO2	3	1	2.6	2.25	0.35	-
CO3	3	1	2.6	2.75	-0.14	-

Average CO Attainment : 2.6

PO Direct Attainment

Weighted Average Matrix

POs	PO1	PO2	PO3	PO4	PO5	PO6	PO7	PO8
Weighted Avg	2.6	2.6	2.2	2.6	2.2	2.2	2.4	1.6

Average CO Attainment : 2.6

POs	PO1	PO2	PO3	PO4	PO5	PO6	PO7	PO8
Calculation	2.6 (2.6)/ 3	2.6 (2.6)/ 3	2.2 (2.6)/ 3	2.6 (2.6)/ 3	2.2 (2.6)/ 3	2.2 (2.6)/ 3	2.4 (2.6)/ 3	1.6 (2.6)/ 3
Direct Attainment	2.25	2.25	1.91	2.25	1.91	1.91	2.08	1.39

COURSE OVERVIEW | BSW



Social Entrepreneurship

Course Overview

Program Outcomes

- | | |
|------------|---|
| PO1 | Graduates will critically analyze social realities, understand their changing dynamics, and actively engage in processes that contribute to positive social transformation. |
| PO2 | They will demonstrate an in-depth understanding of diverse communities, their unique challenges, and systemic inequalities, and advocate for social justice in their professional practice. |
| PO3 | Graduates will apply appropriate social work methods and strategies to effectively work with individuals, groups, and communities, addressing various social issues. |
| PO4 | They will embody professional social work values and ethics, ensuring integrity, respect, and accountability in all aspects of their practice. |
| PO5 | Graduates will develop problem-solving abilities and intervention strategies tailored to the needs of marginalized and vulnerable populations. |
| PO6 | They will integrate research and evidence-based knowledge to design, implement, and evaluate social work interventions effectively. |
| PO7 | Graduates will exhibit strong communication skills and the ability to collaborate with multidisciplinary teams to address social challenges holistically. |
| PO8 | They will demonstrate a commitment to lifelong learning, staying informed about emerging trends and practices in the field of social work. |

Course Outcomes

- | | |
|------------|---|
| CO1 | Remember the steps for Ideation, Design Thinking and Registration of a Social Enterprise. |
| CO2 | Understand the Social Entrepreneurship Ecosystem, Traits & Competencies of a Social Entrepreneur. |
| CO3 | Analyze the feasibility of opportunities, business plans, and market research for social enterprises. |
| CO4 | Evaluate the Sustainability Strategies for Social Enterprises, including Financial Plans and Resource Linkages. |
| CO5 | Apply the Ideation / Design Thinking Process and Innovation to craft and test competitive Lean Canvas and Business Plans. |

CO-PO Mapping

courseOutcomes	PO1	PO2	PO3	PO4	PO5	PO6	PO7	PO8	Average
COVSC 201.1	2	1	2	1	2	2	1	2	1.62
COVSC 201.2	2	3	2	1	2	2	2	2	2
COVSC 201.3	3	2	3	2	3	3	3	2	2.62
COVSC 201.4	3	2	3	3	3	3	2	2	2.62
COVSC 201.5	3	2	3	3	3	3	3	3	2.87
Average	2.6	2	2.6	2	2.6	2.6	2.2	2.2	-

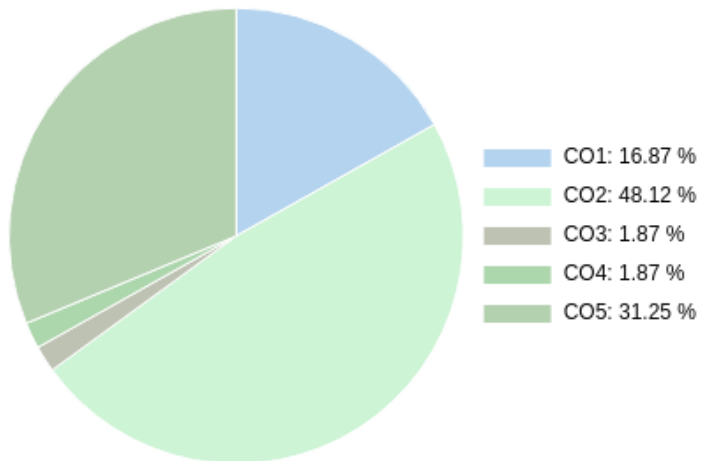
CO targets & Attainment Levels

CO	Target	Direct Attainment levels			Indirect Attainment levels		
		Level 1	Level 2	Level 3	Level 1	Level 2	Level 3
CO1	1.62	0 - 40	41 - 50	51 - 100	0 - 40	41 - 50	51 - 100
CO2	2	0 - 40	41 - 50	51 - 100	0 - 40	41 - 50	51 - 100
CO3	2.62	0 - 40	41 - 50	51 - 100	0 - 40	41 - 50	51 - 100
CO4	2.62	0 - 40	41 - 50	51 - 100	0 - 40	41 - 50	51 - 100
CO5	2.87	0 - 40	41 - 50	51 - 100	0 - 40	41 - 50	51 - 100

Exam Results

Exam Name	Threshold
External Exam Sem 3 24-25	50%
UNIT 1/Social Entrepreneurship 2	50%
UNIT 2/ Social Entrepreneurship 2	50%
UNIT 3/Social Entrepreneurship 2	50%
Internal Assessment overall	50%

CO Coverage



COs	CO1	CO2	CO3	CO4	CO5
80	13.5	1.5	38.5	1.5	25.0
%	16.9	1.9	48.1	1.9	31.3

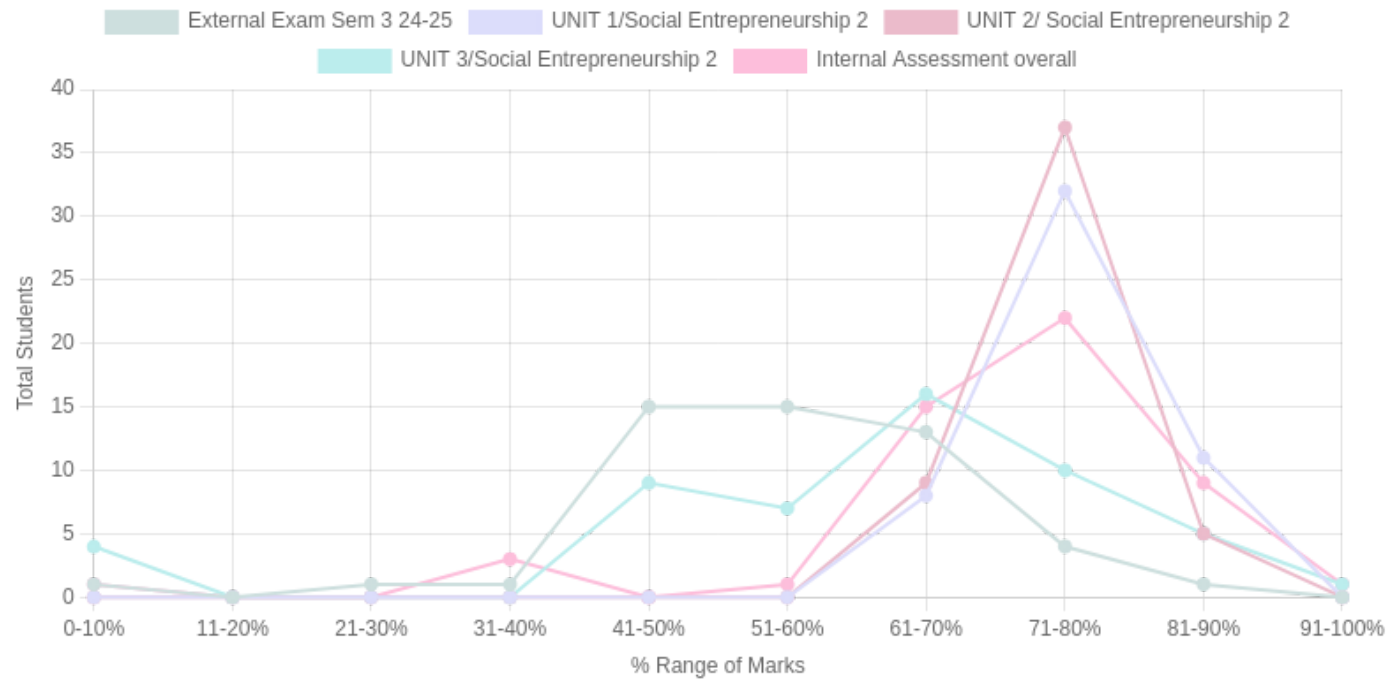
Formative (CIE) Assessments

Sr No	Exam Name	Date	Total Marks	Threshold in %	CO1	CO2	CO3	CO4	CO5	CO6	Avg Attainment
2	UNIT 1/Social Entrepreneurship 2	04/02/2025	10	50	-	-	3	-	3	-	3
3	UNIT 2/ Social Entrepreneurship 2	04/02/2025	10	50	-	-	3	-	3	-	3
4	UNIT 3/Social Entrepreneurship 2	04/02/2025	10	50	-	-	3	-	3	-	3
5	Internal Assessment overall	14/02/2025	20	50	-	-	3	-	3	-	3

Summative (SEE) Assessments

Sr No	Exam Name	Date	Total Marks	Threshold in %	CO1	CO2	CO3	CO4	CO5	CO6	Avg Attainment
1	External Exam Sem 3 24-25	15/01/2025	30	50	3	3	3	3	-	-	3

Student % wise Distribution



Sr No	Assessment Title	Type	Total Marks	Avg Marks	Threshold in %	No of Students Scoring										Total Students Above Threshold
						0-10%	11-20%	21-30%	31-40%	41-50%	51-60%	61-70%	71-80%	81-90%	91-100%	
1	External Exam Sem 3 24-25	S	30	17.06	50	1	0	1	1	15	15	13	4	1	0	41
2	UNIT 1/Social Entrepreneurship 2	F	10	8.05	50	0	0	0	0	0	0	8	32	11	0	51
3	UNIT 2/ Social Entrepreneurship 2	F	10	7.92	50	0	0	0	0	0	0	9	37	5	0	51
4	UNIT 3/Social Entrepreneurship 2	F	10	6.42	50	4	0	0	0	9	7	16	10	5	1	48
5	Internal Assessment overall	F	20	14.44	50	1	0	0	3	0	1	15	22	9	1	48

CO Indirect Attainment

Course Exit Survey - BSW - SEM 3

Q1	1. Were you able to remember the steps for Ideation, Design Thinking, and Registration of a Social Enterprise?
Scale	Strongly Agree <input type="radio"/> Agree <input type="radio"/> Disagree <input type="radio"/>
Q2	2. Were you able to understand the Social Entrepreneurship Ecosystem, along with the traits and competencies of a Social Entrepreneur?
Scale	Strongly Agree <input type="radio"/> Agree <input type="radio"/> Disagree <input type="radio"/>
Q3	3. Were you able to analyze the feasibility of opportunities, business plans, and market research for social enterprises?
Scale	Strongly Agree <input type="radio"/> Agree <input type="radio"/> Disagree <input type="radio"/>
Q4	4. Were you able to evaluate sustainability strategies for social enterprises, including financial plans and resource linkages?
Scale	Strongly Agree <input type="radio"/> Agree <input type="radio"/> Disagree <input type="radio"/>
Q5	5. Were you able to apply the Ideation/Design Thinking process and innovation to craft and test competitive Lean Canvas and Business Plans?
Scale	Strongly Agree <input type="radio"/> Agree <input type="radio"/> Disagree <input type="radio"/>
Q6	6. Were you satisfied with the overall relevance and applicability of the course content to the stated learning outcomes?
Scale	Strongly Agree <input type="radio"/> Agree <input type="radio"/> Disagree <input type="radio"/>

CO Attainment

CO	Direct Attainment	Indirect Attainment	Final Attainment	Target	Gap	Justification
CO1	1.79	1	1.63	1.62	-	-
CO2	1.79	1	1.63	2	-0.37	-
CO3	3	1	2.6	2.62	-0.02	-
CO4	1.79	1	1.63	2.62	-0.99	-

CO	Direct Attainment	Indirect Attainment	Final Attainment	Target	Gap	Justification
CO5	1.2	1	1.15	2.87	-1.72	-

Average CO Attainment : 1.72

PO Direct Attainment

Weighted Average Matrix

POs	PO1	PO2	PO3	PO4	PO5	PO6	PO7	PO8
Weighted Avg	2.6	2	2.6	2	2.6	2.6	2.2	2.2

Average CO Attainment : 1.72

POs	PO1	PO2	PO3	PO4	PO5	PO6	PO7	PO8
Calculation	2.6 (1.72)/ 3	2 (1.72)/ 3	2.6 (1.72)/ 3	2 (1.72)/ 3	2.6 (1.72)/ 3	2.6 (1.72)/ 3	2.2 (1.72)/ 3	2.2 (1.72)/ 3
Direct Attainment	1.49	1.15	1.49	1.15	1.49	1.49	1.26	1.26

COURSE OVERVIEW | BSW



Social Work Practice With Communities

Course Overview

Program Outcomes

- | | |
|------------|---|
| PO1 | Graduates will critically analyze social realities, understand their changing dynamics, and actively engage in processes that contribute to positive social transformation. |
| PO2 | They will demonstrate an in-depth understanding of diverse communities, their unique challenges, and systemic inequalities, and advocate for social justice in their professional practice. |
| PO3 | Graduates will apply appropriate social work methods and strategies to effectively work with individuals, groups, and communities, addressing various social issues. |
| PO4 | They will embody professional social work values and ethics, ensuring integrity, respect, and accountability in all aspects of their practice. |
| PO5 | Graduates will develop problem-solving abilities and intervention strategies tailored to the needs of marginalized and vulnerable populations. |
| PO6 | They will integrate research and evidence-based knowledge to design, implement, and evaluate social work interventions effectively. |
| PO7 | Graduates will exhibit strong communication skills and the ability to collaborate with multidisciplinary teams to address social challenges holistically. |
| PO8 | They will demonstrate a commitment to lifelong learning, staying informed about emerging trends and practices in the field of social work. |

Course Outcomes

- | | |
|------------|---|
| CO1 | Remember definitions of community, geographical categorizations, and models of community practice. |
| CO2 | Understand the evolution of community social work practice in India. |
| CO3 | Evaluate the effectiveness of community interventions and empowerment frameworks. |
| CO4 | Apply the tools like community mapping and resource mapping to understand and address community needs |
| CO5 | Analyz the community dynamics such as intersections of religion, caste, gender, and ableness through mapping tools. |

CO-PO Mapping

courseOutcomes	PO1	PO2	PO3	PO4	PO5	PO6	PO7	PO8	Average
COMajor 203.1	2	2	1	2	1	1	1	1	1.37
COMajor 203.2	2	2	2	2	2	2	2	2	2
COMajor 203.3	3	3	3	2	3	2	3	2	2.62
COMajor 203.4	3	3	3	3	3	3	3	3	3
COMajor 203.5	3	3	3	3	3	3	3	3	3
Average	2.6	2.6	2.4	2.4	2.4	2.2	2.4	2.2	-

CO Attainment Weightages

Direct Attainment	Indirect Attainment
80 %	20 %

CO Assessment Weightages

Formative (CIE)	Summative (SEE)
40 %	60 %

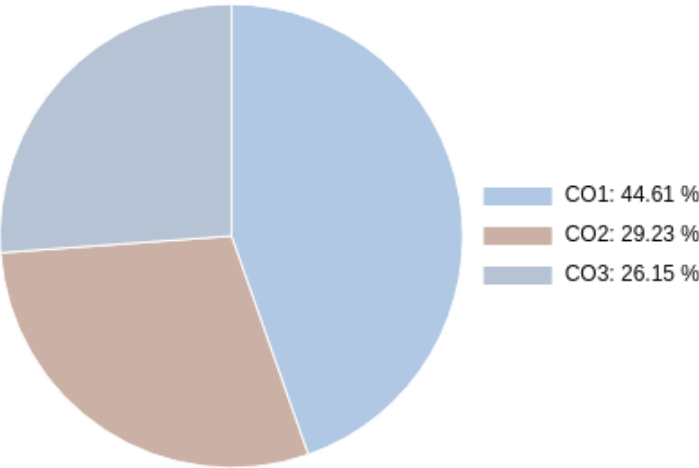
CO targets & Attainment Levels

CO	Target	Direct Attainment levels			Indirect Attainment levels		
		Level 1	Level 2	Level 3	Level 1	Level 2	Level 3
CO1	1.37	0 - 40	41 - 50	51 - 100	0 - 40	41 - 50	51 - 100
CO2	2	0 - 40	41 - 50	51 - 100	0 - 40	41 - 50	51 - 100
CO3	2.62	0 - 40	41 - 50	51 - 100	0 - 40	41 - 50	51 - 100
CO4	3	0 - 40	41 - 50	51 - 100	0 - 40	41 - 50	51 - 100
CO5	3	0 - 40	41 - 50	51 - 100	0 - 40	41 - 50	51 - 100

Exam Results

Exam Name	Threshold
External Exam Sem 3 24-25	50%
Unit 1/Vulnerable Community	50%
UNIT 2/Models of C.O.	50%
UNIT 3/Social work practice with communities	50%
Internal Assessment overall	50%

CO Coverage



COs	CO1	CO2	CO3
65	29.0	17.0	19.0
%	44.6	26.1	29.2

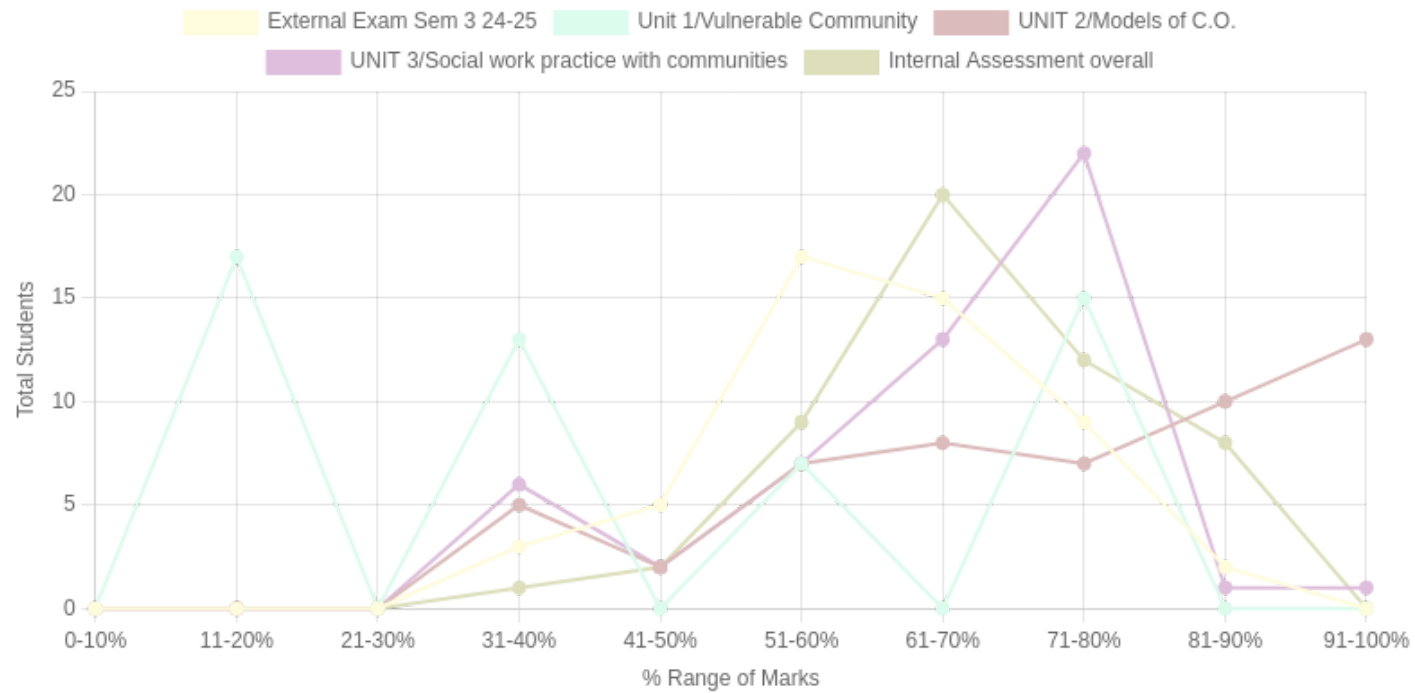
Formative (CIE) Assessments

Sr No	Exam Name	Date	Total Marks	Threshold in %	CO1	CO2	CO3	CO4	CO5	CO6	Avg Attainment
2	Unit 1/Vulnerable Community	04/02/2025	5	50	2	-	-	-	-	-	2
3	UNIT 2/Models of C.O.	04/02/2025	5	50	-	3	-	-	-	-	3
4	UNIT 3/Social work practice with communities	04/02/2025	5	50	-	-	3	-	-	-	3
5	Internal Assessment overall	14/02/2025	20	50	3	3	-	-	-	-	3

Summative (SEE) Assessments

Sr No	Exam Name	Date	Total Marks	Threshold in %	CO1	CO2	CO3	CO4	CO5	CO6	Avg Attainment
1	External Exam Sem 3 24-25	15/01/2025	30	50	3	3	3	-	-	-	3

Student % wise Distribution



Sr No	Assessment Title	Type	Total Marks	Avg Marks	Threshold in %	No of Students Scoring										Total Students Above Threshold
						0-10%	11-20%	21-30%	31-40%	41-50%	51-60%	61-70%	71-80%	81-90%	91-100%	
1	External Exam Sem 3 24-25	S	30	18.63	50	0	0	0	3	5	17	15	9	2	0	45
2	Unit 1/Vulnerable Community	F	5	2.38	50	0	17	0	13	0	7	0	15	0	0	22
3	UNIT 2/Models of C.O.	F	5	3.88	50	0	0	0	5	2	7	8	7	10	13	47
4	UNIT 3/Social work practice with communities	F	5	3.48	50	0	0	0	6	2	7	13	22	1	1	46
5	Internal Assessment overall	F	20	13.68	50	0	0	0	1	2	9	20	12	8	0	49

CO Indirect Attainment

Course Exit Survey - BSW - SEM 3

Q1	1. Were you able to remember definitions of community, geographical categorizations, and models of community practice?
Scale	Strongly Agree <input type="radio"/> Agree <input type="radio"/> Disagree <input type="radio"/>
Q2	2. Were you able to understand the evolution of community social work practice in India?
Scale	Strongly Agree <input type="radio"/> Agree <input type="radio"/> Disagree <input type="radio"/>
Q3	3. Were you able to evaluate the effectiveness of community interventions and empowerment frameworks?
Scale	Strongly Agree <input type="radio"/> Agree <input type="radio"/> Disagree <input type="radio"/>
Q4	4. Were you able to apply tools like community mapping and resource mapping to understand and address community needs?
Scale	Strongly Agree <input type="radio"/> Agree <input type="radio"/> Disagree <input type="radio"/>
Q5	5. Were you able to analyze community dynamics such as intersections of religion, caste, gender, and ableness through mapping tools?
Scale	Strongly Agree <input type="radio"/> Agree <input type="radio"/> Disagree <input type="radio"/>
Q6	6. Were you satisfied with the overall relevance and applicability of the course content to the stated learning outcomes?
Scale	Strongly Agree <input type="radio"/> Agree <input type="radio"/> Disagree <input type="radio"/>

CO Attainment

CO	Direct Attainment	Indirect Attainment	Final Attainment	Target	Gap	Justification
CO1	2.8	1	2.44	1.37	1.06	-
CO2	3	1	2.6	2	0.6	-
CO3	3	1	2.6	2.62	-0.02	-

Average CO Attainment : 2.54

PO Direct Attainment

Weighted Average Matrix

POs	PO1	PO2	PO3	PO4	PO5	PO6	PO7	PO8
Weighted Avg	2.6	2.6	2.4	2.4	2.4	2.2	2.4	2.2

Average CO Attainment : 2.54

POs	PO1	PO2	PO3	PO4	PO5	PO6	PO7	PO8
Calculation	2.6 (2.54)/ 3	2.6 (2.54)/ 3	2.4 (2.54)/ 3	2.4 (2.54)/ 3	2.4 (2.54)/ 3	2.2 (2.54)/ 3	2.4 (2.54)/ 3	2.2 (2.54)/ 3
Direct Attainment	2.20	2.20	2.03	2.03	2.03	1.86	2.03	1.86

COURSE OVERVIEW | BSW



Social Work Practice With Groups

Course Overview

Program Outcomes

- | | |
|------------|---|
| PO1 | Graduates will critically analyze social realities, understand their changing dynamics, and actively engage in processes that contribute to positive social transformation. |
| PO2 | They will demonstrate an in-depth understanding of diverse communities, their unique challenges, and systemic inequalities, and advocate for social justice in their professional practice. |
| PO3 | Graduates will apply appropriate social work methods and strategies to effectively work with individuals, groups, and communities, addressing various social issues. |
| PO4 | They will embody professional social work values and ethics, ensuring integrity, respect, and accountability in all aspects of their practice. |
| PO5 | Graduates will develop problem-solving abilities and intervention strategies tailored to the needs of marginalized and vulnerable populations. |
| PO6 | They will integrate research and evidence-based knowledge to design, implement, and evaluate social work interventions effectively. |
| PO7 | Graduates will exhibit strong communication skills and the ability to collaborate with multidisciplinary teams to address social challenges holistically. |
| PO8 | They will demonstrate a commitment to lifelong learning, staying informed about emerging trends and practices in the field of social work. |

Course Outcomes

- | | |
|------------|---|
| CO1 | Understanding group dynamics, communication patterns, and leadership styles. |
| CO2 | Applying rapport-building techniques and creating session plans for group work. |
| CO3 | Evaluating the effectiveness of group work interventions and decision-making processes. |
| CO4 | Creating facilitation strategies, session plans, and interventions tailored to group needs. |
| CO5 | Analyzing interaction patterns and group dynamics. |

CO-PO Mapping

courseOutcomes	PO1	PO2	PO3	PO4	PO5	PO6	PO7	PO8	Average
COMajor 201.1	2	2	1	2	2	2	3	2	2
COMajor 201.2	2	2	3	2	3	2	3	2	2.37
COMajor 201.3	3	3	3	3	3	3	3	3	3
COMajor 201.4	3	3	3	3	3	3	3	3	3
COMajor 201.5	2	3	3	3	3	3	3	3	2.87
Average	2.4	2.6	2.6	2.6	2.8	2.6	3	2.6	-

CO Attainment Weightages

Direct Attainment	Indirect Attainment
80 %	20 %

CO Assessment Weightages

Formative (CIE)	Summative (SEE)
40 %	60 %

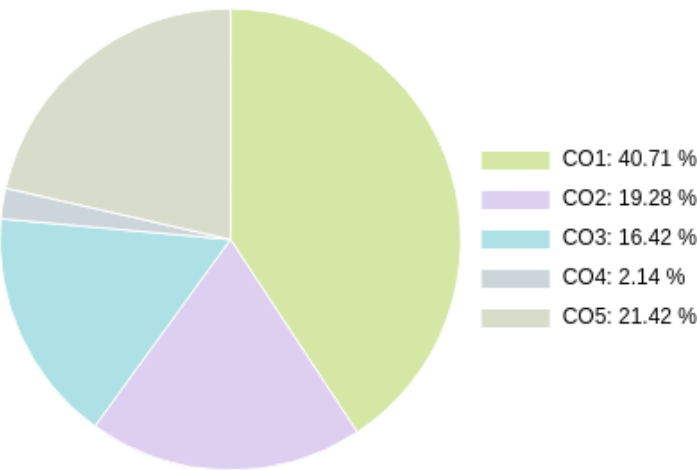
CO targets & Attainment Levels

CO	Target	Direct Attainment levels			Indirect Attainment levels		
		Level 1	Level 2	Level 3	Level 1	Level 2	Level 3
CO1	2	0 - 40	41 - 50	51 - 100	0 - 40	41 - 50	51 - 100
CO2	2.37	0 - 40	41 - 50	51 - 100	0 - 40	41 - 50	51 - 100
CO3	3	0 - 40	41 - 50	51 - 100	0 - 40	41 - 50	51 - 100
CO4	3	0 - 40	41 - 50	51 - 100	0 - 40	41 - 50	51 - 100
CO5	2.87	0 - 40	41 - 50	51 - 100	0 - 40	41 - 50	51 - 100

Exam Results

Exam Name	Threshold
External Exam Sem 3 24-25	50%
UNIT 2 / MCQ	50%
UNIT 3 / REFLECTIVE ANSWER	50%
UNIT 1 / ASSIGNMENT	50%
Internal Assessment overall	50%

CO Coverage



COs	CO1	CO2	CO3	CO4	CO5
70	28.5	11.5	13.5	1.5	15.0
%	40.7	16.4	19.3	2.1	21.4

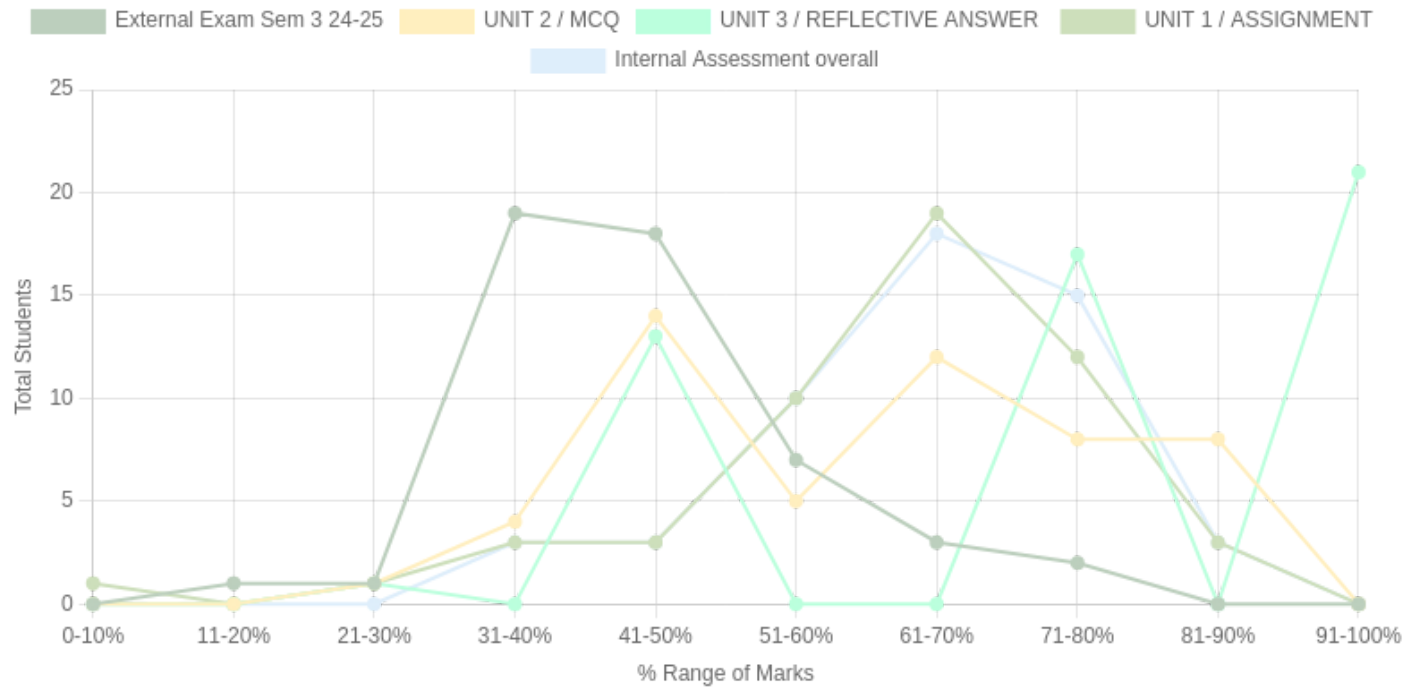
Formative (CIE) Assessments

Sr No	Exam Name	Date	Total Marks	Threshold in %	CO1	CO2	CO3	CO4	CO5	CO6	Avg Attainment
2	UNIT 2 / MCQ	06/10/2024	6	50	3	-	-	-	-	-	3
3	UNIT 3 / REFLECTIVE ANSWER	06/10/2024	4	50	3	-	-	-	-	-	3
4	UNIT 1 / ASSIGNMENT	06/10/2024	10	50	3	-	-	-	3	-	3
5	Internal Assessment overall	14/02/2025	20	50	-	3	-	-	3	-	3

Summative (SEE) Assessments

Sr No	Exam Name	Date	Total Marks	Threshold in %	CO1	CO2	CO3	CO4	CO5	CO6	Avg Attainment
1	External Exam Sem 3 24-25	15/01/2025	30	50	2	3	3	3	-	-	2.75

Student % wise Distribution



Sr No	Assessment Title	Type	Total Marks	Avg Marks	Threshold in %	No of Students Scoring										Total Students Above Threshold
						0-10%	11-20%	21-30%	31-40%	41-50%	51-60%	61-70%	71-80%	81-90%	91-100%	
1	External Exam Sem 3 24-25	S	30	13.98	50	0	1	1	19	18	7	3	2	0	0	19
2	UNIT 2 / MCQ	F	6	3.67	50	0	0	1	4	14	5	12	8	8	0	43
3	UNIT 3 / REFLECTIVE ANSWER	F	4	3.11	50	0	0	1	0	13	0	0	17	0	21	51
4	UNIT 1 / ASSIGNMENT	F	10	6.43	50	1	0	1	3	3	10	19	12	3	0	44
5	Internal Assessment overall	F	20	13.46	50	0	0	0	3	3	10	18	15	3	0	48

CO Indirect Attainment

Course Exit Survey - BSW - SEM 3

Q1	1. Were you able to understand group dynamics, communication patterns, and leadership styles?
Scale	Strongly Agree <input type="radio"/> Agree <input type="radio"/> Disagree <input type="radio"/>
Q2	2. Were you able to apply rapport-building techniques and create session plans for group work?
Scale	Strongly Agree <input type="radio"/> Agree <input type="radio"/> Disagree <input type="radio"/>
Q3	3. Were you able to evaluate the effectiveness of group work interventions and decision-making processes?
Scale	Strongly Agree <input type="radio"/> Agree <input type="radio"/> Disagree <input type="radio"/>
Q4	4. Were you able to create facilitation strategies, session plans, and interventions tailored to group needs?
Scale	Strongly Agree <input type="radio"/> Agree <input type="radio"/> Disagree <input type="radio"/>
Q5	5. Were you able to analyze interaction patterns and group dynamics?
Scale	Strongly Agree <input type="radio"/> Agree <input type="radio"/> Disagree <input type="radio"/>
Q6	6. Were you satisfied with the overall relevance and applicability of the course content to the stated learning outcomes?
Scale	Strongly Agree <input type="radio"/> Agree <input type="radio"/> Disagree <input type="radio"/>

CO Attainment

CO	Direct Attainment	Indirect Attainment	Final Attainment	Target	Gap	Justification
CO1	2.39	1	2.11	2	0.1	-
CO2	3	1	2.6	2.37	0.23	-
CO3	1.79	1	1.63	3	-1.37	-
CO4	1.79	1	1.63	3	-1.37	-

CO	Direct Attainment	Indirect Attainment	Final Attainment	Target	Gap	Justification
CO5	1.2	1	1.15	2.87	-1.72	-

Average CO Attainment : 1.82

PO Direct Attainment

Weighted Average Matrix

POs	PO1	PO2	PO3	PO4	PO5	PO6	PO7	PO8
Weighted Avg	2.4	2.6	2.6	2.6	2.8	2.6	3	2.6

Average CO Attainment : 1.82

POs	PO1	PO2	PO3	PO4	PO5	PO6	PO7	PO8
Calculation	2.4 (1.82)/ 3	2.6 (1.82)/ 3	2.6 (1.82)/ 3	2.6 (1.82)/ 3	2.8 (1.82)/ 3	2.6 (1.82)/ 3	3 (1.82)/ 3	2.6 (1.82)/ 3
Direct Attainment	1.46	1.58	1.58	1.58	1.70	1.58	1.82	1.58

COURSE OVERVIEW | BSW



Field Work-iii

Course Overview

Program Outcomes

- | | |
|------------|---|
| PO1 | Graduates will critically analyze social realities, understand their changing dynamics, and actively engage in processes that contribute to positive social transformation. |
| PO2 | They will demonstrate an in-depth understanding of diverse communities, their unique challenges, and systemic inequalities, and advocate for social justice in their professional practice. |
| PO3 | Graduates will apply appropriate social work methods and strategies to effectively work with individuals, groups, and communities, addressing various social issues. |
| PO4 | They will embody professional social work values and ethics, ensuring integrity, respect, and accountability in all aspects of their practice. |
| PO5 | Graduates will develop problem-solving abilities and intervention strategies tailored to the needs of marginalized and vulnerable populations. |
| PO6 | They will integrate research and evidence-based knowledge to design, implement, and evaluate social work interventions effectively. |
| PO7 | Graduates will exhibit strong communication skills and the ability to collaborate with multidisciplinary teams to address social challenges holistically. |
| PO8 | They will demonstrate a commitment to lifelong learning, staying informed about emerging trends and practices in the field of social work. |

Course Outcomes

- | | |
|------------|--|
| CO1 | Critical understanding of the organization and the problem situation and can link theory and practice. |
| CO2 | Demonstrate problem-solving skills, administrative and communication skills in practice. |
| CO3 | Responsibility and maturity in functioning in the organization and being self-aware as an individual and a professional. |
| CO4 | Develop IEC materials and relevant programme media for community engagement and group sessions. |

CO-PO Mapping

courseOutcomes	PO1	PO2	PO3	PO4	PO5	PO6	PO7	PO8	Average
COMajor 202.1	3	2	3	3	2	3	2	3	2.62
COMajor 202.2	2	3	3	2	2	3	3	2	2.5
COMajor 202.3	3	2	3	3	3	3	3	3	2.87
COMajor 202.4	2	3	3	3	2	3	3	2	2.62
Average	2.5	2.5	3	2.75	2.25	3	2.75	2.5	-

CO Attainment Weightages

Direct Attainment	Indirect Attainment
80 %	20 %

CO Assessment Weightages

Formative (CIE)	Summative (SEE)
40 %	60 %

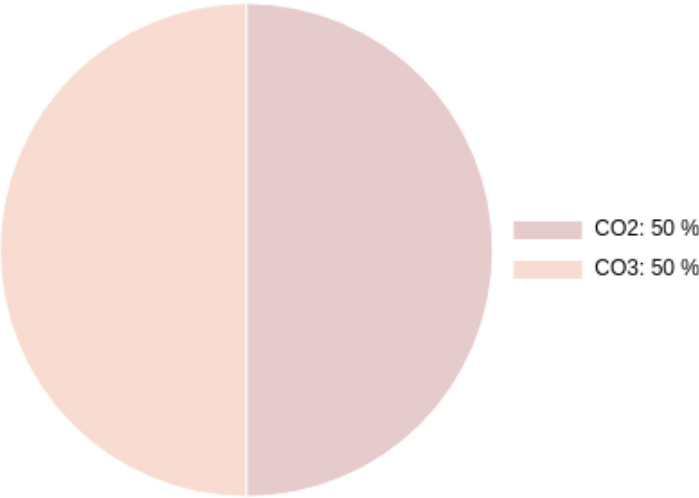
CO targets & Attainment Levels

CO	Target	Direct Attainment levels			Indirect Attainment levels		
		Level 1	Level 2	Level 3	Level 1	Level 2	Level 3
CO1	2.62	0 - 40	41 - 50	51 - 100	0 - 40	41 - 50	51 - 100
CO2	2.5	0 - 40	41 - 50	51 - 100	0 - 40	41 - 50	51 - 100
CO3	2.87	0 - 40	41 - 50	51 - 100	0 - 40	41 - 50	51 - 100
CO4	2.62	0 - 40	41 - 50	51 - 100	0 - 40	41 - 50	51 - 100

Exam Results

Exam Name	Threshold
Fieldwork 3 Internal	50%

CO Coverage



COs	CO2	CO3
80	40.0	40.0
%	50.0	50.0

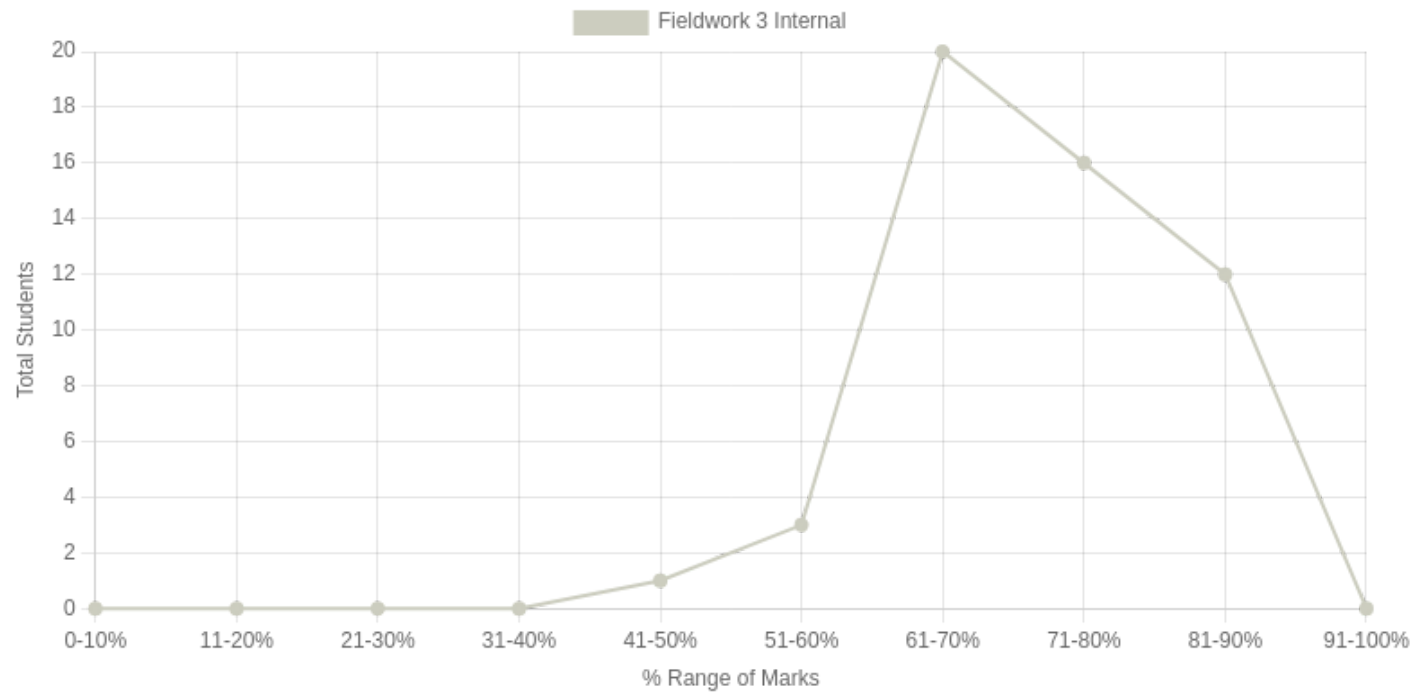
Formative (CIE) Assessments

Sr No	Exam Name	Date	Total Marks	Threshold in %	CO1	CO2	CO3	CO4	CO5	CO6	Avg Attainment
1	Fieldwork 3 Internal	04/02/2025	80	50	-	3	3	-	-	-	3

Summative (SEE) Assessments

Sr No	Exam Name	Date	Total Marks	Threshold in %	CO1	CO2	CO3	CO4	CO5	CO6	Avg Attainment
-------	-----------	------	-------------	----------------	-----	-----	-----	-----	-----	-----	----------------

Student % wise Distribution



Sr No	Assessment Title	Type	Total Marks	Avg Marks	Threshold in %	No of Students Scoring										Total Students Above Threshold
						0-10%	11-20%	21-30%	31-40%	41-50%	51-60%	61-70%	71-80%	81-90%	91-100%	
1	Fieldwork 3 Internal	F	80	58.11	50	0	0	0	0	1	3	20	16	12	0	52

CO Indirect Attainment

Course Exit Survey - BSW - SEM 3

Q1	1. Were you able to critically understand the organization and the problem situation, linking theory and practice?
Scale	Strongly Agree <input type="radio"/> Agree <input type="radio"/> Disagree <input type="radio"/>
Q2	2. Were you able to demonstrate problem-solving skills, administrative skills, and communication skills in practice?
Scale	Strongly Agree <input type="radio"/> Agree <input type="radio"/> Disagree <input type="radio"/>
Q3	3. Were you able to take responsibility, function with maturity in the organization, and be self-aware as an individual and a professional?
Scale	Strongly Agree <input type="radio"/> Agree <input type="radio"/> Disagree <input type="radio"/>
Q4	4. Were you able to develop IEC materials and relevant programme media for community engagement and group sessions?
Scale	Strongly Agree <input type="radio"/> Agree <input type="radio"/> Disagree <input type="radio"/>
Q5	5. Were you satisfied with the overall relevance and applicability of the course content to the stated learning outcomes?
Scale	Strongly Agree <input type="radio"/> Agree <input type="radio"/> Disagree <input type="radio"/>

CO Attainment

CO	Direct Attainment	Indirect Attainment	Final Attainment	Target	Gap	Justification
CO2	1.2	1	1.15	2.5	-1.35	-
CO3	1.2	1	1.15	2.87	-1.72	-

Average CO Attainment : 1.14

PO Direct Attainment

Weighted Average Matrix

POs	PO1	PO2	PO3	PO4	PO5	PO6	PO7	PO8
Weighted Avg	2.5	2.5	3	2.75	2.25	3	2.75	2.5

Average CO Attainment : 1.14

POs	PO1	PO2	PO3	PO4	PO5	PO6	PO7	PO8
Calculation	2.5 (1.14)/ 3	2.5 (1.14)/ 3	3 (1.14)/ 3	2.75 (1.14)/ 3	2.25 (1.14)/ 3	3 (1.14)/ 3	2.75 (1.14)/ 3	2.5 (1.14)/ 3
Direct Attainment	0.95	0.95	1.14	1.04	0.85	1.14	1.04	0.95

COURSE OVERVIEW | BSW