



English- II

Course Overview

Program Outcomes

- | | |
|------------|---|
| PO1 | Graduates will critically analyze social realities, understand their changing dynamics, and actively engage in processes that contribute to positive social transformation. |
| PO2 | They will demonstrate an in-depth understanding of diverse communities, their unique challenges, and systemic inequalities, and advocate for social justice in their professional practice. |
| PO3 | Graduates will apply appropriate social work methods and strategies to effectively work with individuals, groups, and communities, addressing various social issues. |
| PO4 | They will embody professional social work values and ethics, ensuring integrity, respect, and accountability in all aspects of their practice. |
| PO5 | Graduates will develop problem-solving abilities and intervention strategies tailored to the needs of marginalized and vulnerable populations. |
| PO6 | They will integrate research and evidence-based knowledge to design, implement, and evaluate social work interventions effectively. |
| PO7 | Graduates will exhibit strong communication skills and the ability to collaborate with multidisciplinary teams to address social challenges holistically. |
| PO8 | They will demonstrate a commitment to lifelong learning, staying informed about emerging trends and practices in the field of social work. |

Course Outcomes

- | | |
|------------|--|
| CO1 | To Remember Identify and apply correct English grammar, punctuation, and sentence structure in written communication. |
| CO2 | To Understand Demonstrate the ability to comprehend, summarize, and edit texts effectively using cohesive writing techniques. |
| CO3 | To Apply Develop confidence in verbal and written English communication for academic, professional, and fieldwork-related purposes. |
| CO4 | To Analyze Engage in creative writing by composing essays, stories, dialogues, and blog entries, reflecting critical thinking and expressive skills. |

CO-PO Mapping

courseOutcomes	PO1	PO2	PO3	PO4	PO5	PO6	PO7	PO8	Average
COAEC 102.1	1	1	2	2	1	1	2	1	1.37
COAEC 102.2	2	2	2	2	1	1	2	2	1.75
COAEC 102.3	2	2	3	2	2	1	3	2	2.12
COAEC 102.4	2	2	2	2	2	2	2	2	2
Average	1.75	1.75	2.25	2	1.5	1.25	2.25	1.75	-

CO Attainment Weightages

Direct Attainment	Indirect Attainment
80 %	20 %

CO Assessment Weightages

Formative (CIE)	Summative (SEE)
40 %	60 %

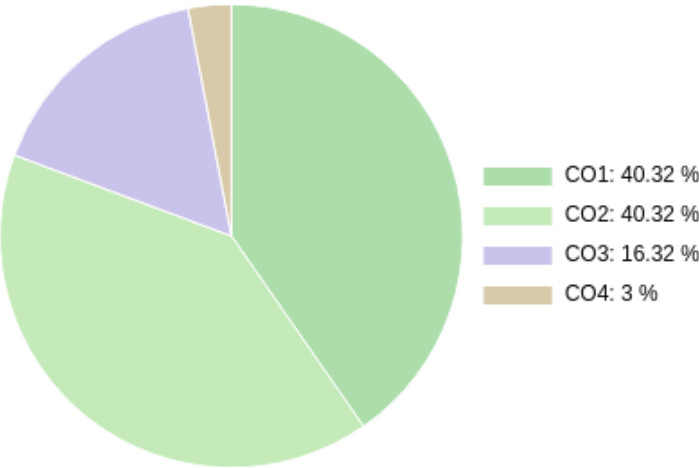
CO targets & Attainment Levels

CO	Target	Direct Attainment levels			Indirect Attainment levels		
		Level 1	Level 2	Level 3	Level 1	Level 2	Level 3
CO1	1.37	0 - 40	41 - 50	51 - 100	0 - 40	41 - 50	51 - 100
CO2	1.75	0 - 40	41 - 50	51 - 100	0 - 40	41 - 50	51 - 100
CO3	2.12	0 - 40	41 - 50	51 - 100	0 - 40	41 - 50	51 - 100
CO4	2	0 - 40	41 - 50	51 - 100	0 - 40	41 - 50	51 - 100

Exam Results

Exam Name	Threshold
Unit 1	50%
Unit 3	50%
External Exam	50%

CO Coverage



COs	CO1	CO2	CO3	CO4
50	20.2	20.2	8.2	1.5
%	40.3	40.3	16.3	3.0

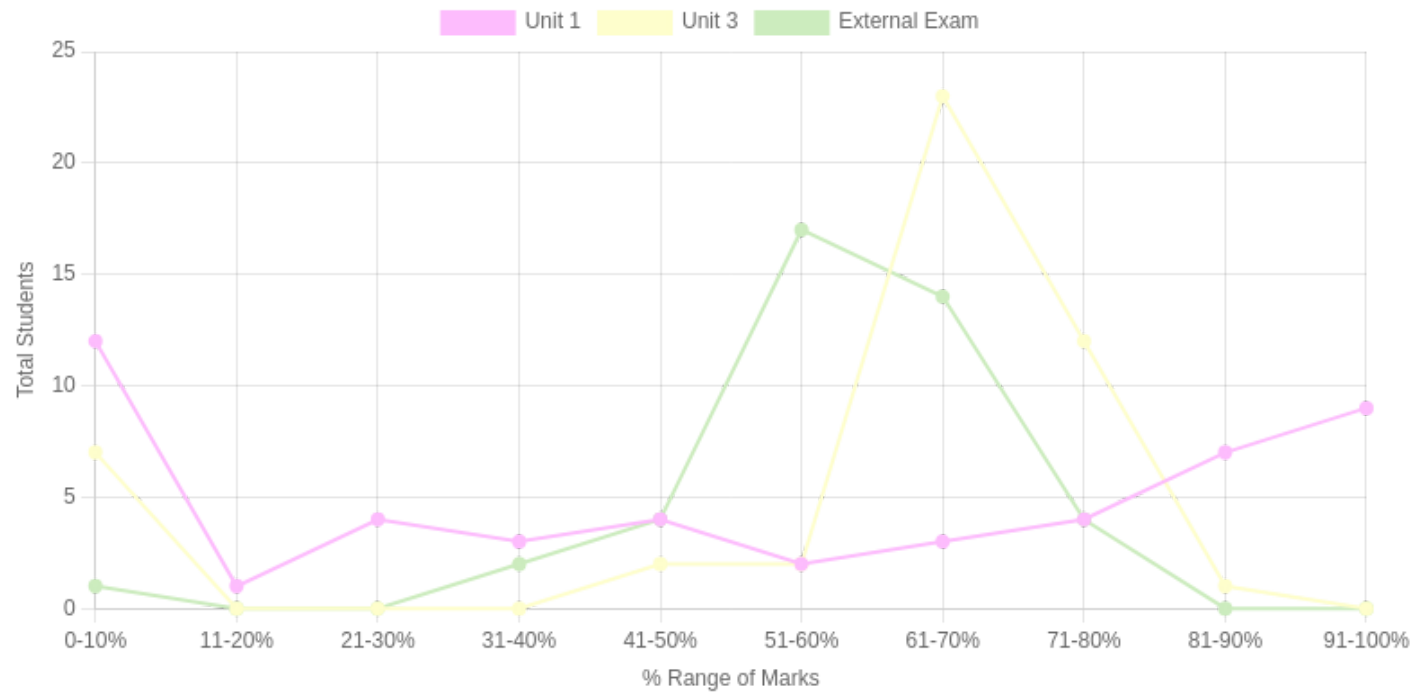
Formative (CIE) Assessments

Sr No	Exam Name	Total Marks	Threshold in %	CO1	CO2	CO3	CO4	CO5	CO6	Avg Attainment
1	Unit 1	10	50	3	3	3	-	-	-	3
2	Unit 3	10	50	3	3	3	-	-	-	3

Summative (SEE) Assessments

Sr No	Exam Name	Total Marks	Threshold in %	CO1	CO2	CO3	CO4	CO5	CO6	Avg Attainment
3	External Exam	30	50	3	2	3	3	-	-	2.75

Student % wise Distribution



Sr No	Assessment Title	Type	Total Marks	Avg Marks	Threshold in %	No of Students Scoring										Total Students Above Threshold
						0-10%	11-20%	21-30%	31-40%	41-50%	51-60%	61-70%	71-80%	81-90%	91-100%	
1	Unit 1	F	10	5.38	50	12	1	4	3	4	2	3	4	7	9	29
2	Unit 3	F	10	6.08	50	7	0	0	0	2	2	23	12	1	0	40
3	External Exam	S	30	17.71	50	1	0	0	2	4	17	14	4	0	0	37

CO Indirect Attainment

Course Exit Survey - BSW - SEM 2

Q1	Were you able to identify and apply correct English grammar, punctuation, and sentence structure in written communication?
Scale	Strongly Agree <input type="radio"/> Agree <input type="radio"/> Disagree <input type="radio"/>
Q2	Were you able to demonstrate the ability to comprehend, summarize, and edit texts effectively using cohesive writing techniques?
Scale	Strongly Agree <input type="radio"/> Agree <input type="radio"/> Disagree <input type="radio"/>
Q3	Were you able to develop confidence in verbal and written English communication for academic, professional, and fieldwork-related purposes?
Scale	Strongly Agree <input type="radio"/> Agree <input type="radio"/> Disagree <input type="radio"/>
Q4	Were you able to engage in creative writing by composing essays, stories, dialogues, and blog entries, reflecting critical thinking and expressive skills?
Scale	Strongly Agree <input type="radio"/> Agree <input type="radio"/> Disagree <input type="radio"/>

CO Attainment

CO	Direct Attainment	Indirect Attainment	Final Attainment	Target	Gap	Justification
CO1	3	1	2.6	1.37	1.23	-
CO2	2.4	1	2.12	1.75	0.37	-
CO3	3	1	2.6	2.12	0.48	-
CO4	1.79	1	1.63	2	-0.37	-

Average CO Attainment : 2.23

PO Direct Attainment

Weighted Average Matrix

POs	PO1	PO2	PO3	PO4	PO5	PO6	PO7	PO8
Weighted Avg	1.75	1.75	2.25	2	1.5	1.25	2.25	1.75

Average CO Attainment : 2.23

POs	PO1	PO2	PO3	PO4	PO5	PO6	PO7	PO8
Calculation	1.75 (2.23)/ 3	1.75 (2.23)/ 3	2.25 (2.23)/ 3	2 (2.23)/ 3	1.5 (2.23)/ 3	1.25 (2.23)/ 3	2.25 (2.23)/ 3	1.75 (2.23)/ 3
Direct Attainment	1.30	1.30	1.67	1.49	1.11	0.93	1.67	1.30

COURSE OVERVIEW | BSW



Social Work Practice with Individuals and Family

Course Overview

Program Outcomes

- | | |
|------------|---|
| PO1 | Graduates will critically analyze social realities, understand their changing dynamics, and actively engage in processes that contribute to positive social transformation. |
| PO2 | They will demonstrate an in-depth understanding of diverse communities, their unique challenges, and systemic inequalities, and advocate for social justice in their professional practice. |
| PO3 | Graduates will apply appropriate social work methods and strategies to effectively work with individuals, groups, and communities, addressing various social issues. |
| PO4 | They will embody professional social work values and ethics, ensuring integrity, respect, and accountability in all aspects of their practice. |
| PO5 | Graduates will develop problem-solving abilities and intervention strategies tailored to the needs of marginalized and vulnerable populations. |
| PO6 | They will integrate research and evidence-based knowledge to design, implement, and evaluate social work interventions effectively. |
| PO7 | Graduates will exhibit strong communication skills and the ability to collaborate with multidisciplinary teams to address social challenges holistically. |
| PO8 | They will demonstrate a commitment to lifelong learning, staying informed about emerging trends and practices in the field of social work. |

Course Outcomes

CO1 To Remember Identify the values, principles, and ethics of social work practice with individuals and families.

CO2 To Understand Explain family structures, roles, and life cycles in the Indian context.

CO3 To Apply Use assessment tools like PIE, ecomaps, and genograms for client evaluation.

CO4 To Analyze Assess intervention strategies using the 5 Ps framework for effective social work practice.

CO-PO Mapping

courseOutcomes	PO1	PO2	PO3	PO4	PO5	PO6	PO7	PO8	Average
CO103.1	2	2	2	3	1	1	1	2	1.75
CO103.2	2	3	2	2	2	1	1	2	1.87
CO103.3	2	2	3	2	3	3	2	1	2.25
CO103.4	3	2	3	2	3	3	2	1	2.37
Average	2.25	2.25	2.5	2.25	2.25	2	1.5	1.5	-

CO Attainment Weightages

Direct Attainment	Indirect Attainment
80 %	20 %

CO Assessment Weightages

Formative (CIE)	Summative (SEE)
40 %	60 %

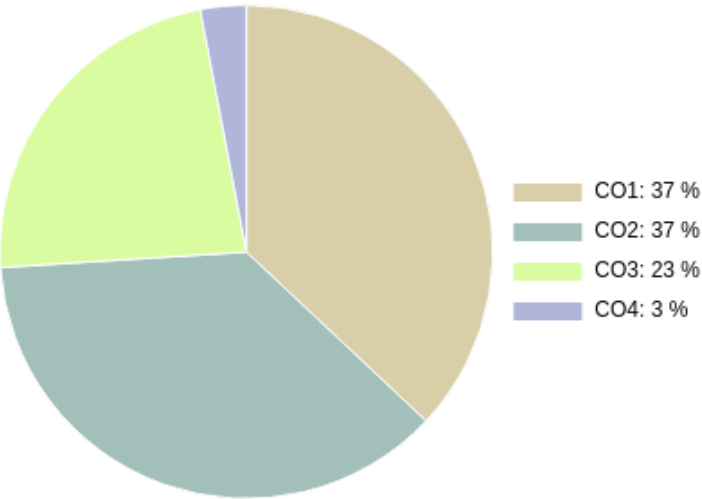
CO targets & Attainment Levels

CO	Target	Direct Attainment levels			Indirect Attainment levels		
		Level 1	Level 2	Level 3	Level 1	Level 2	Level 3
CO4	2.37	0 - 40	41 - 50	51 - 100	0 - 40	41 - 50	51 - 100
CO2	1.87	0 - 40	41 - 50	51 - 100	0 - 40	41 - 50	51 - 100
CO3	2.25	0 - 40	41 - 50	51 - 100	0 - 40	41 - 50	51 - 100
CO1	1.75	0 - 40	41 - 50	51 - 100	0 - 40	41 - 50	51 - 100

Exam Results

Exam Name	Threshold
Unit 1	50%
Unit 2	50%
External Exam	50%

CO Coverage



COs	CO1	CO2	CO3	CO4
50	18.5	18.5	1.5	11.5
%	37.0	37.0	3.0	23.0

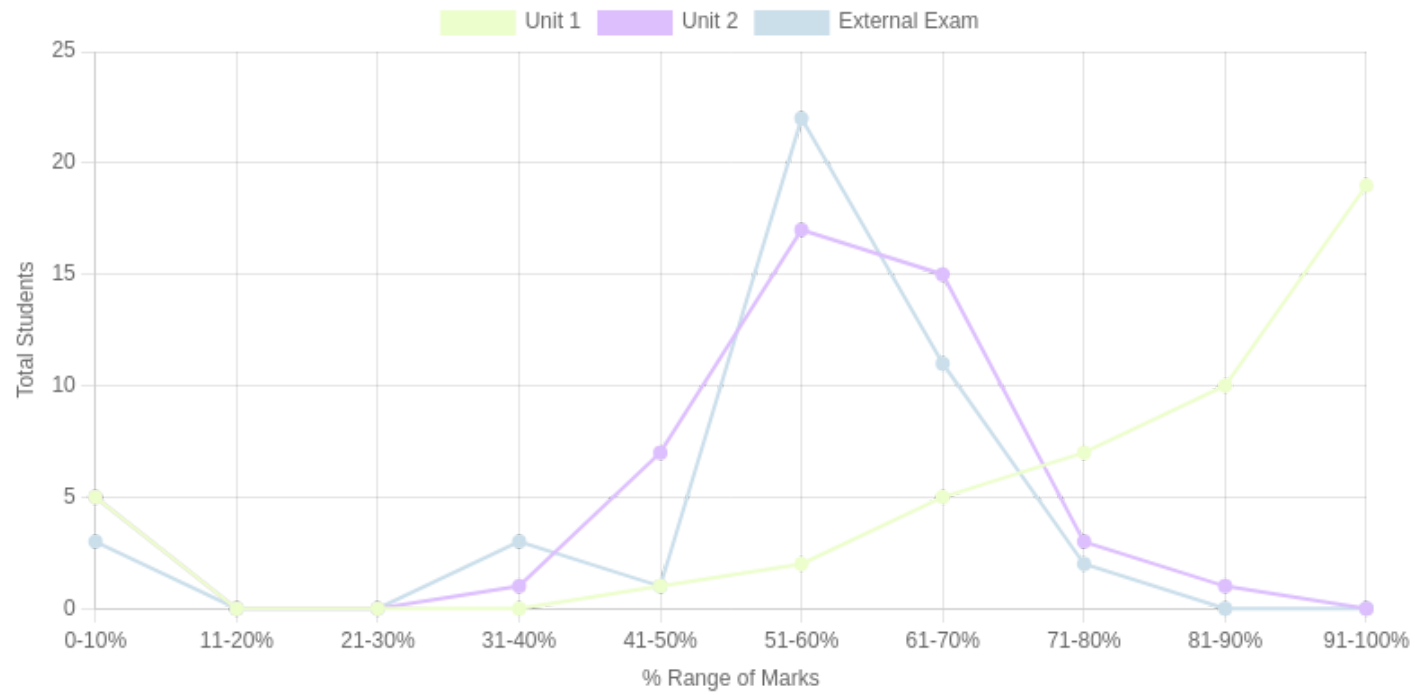
Formative (CIE) Assessments

Sr No	Exam Name	Total Marks	Threshold in %	CO1	CO2	CO3	CO4	CO5	CO6	Avg Attainment
1	Unit 1	10	50	3	3	-	-	-	-	3
2	Unit 2	10	50	-	-	-	3	-	-	3

Summative (SEE) Assessments

Sr No	Exam Name	Total Marks	Threshold in %	CO1	CO2	CO3	CO4	CO5	CO6	Avg Attainment
3	External Exam	30	50	2.5	2.5	2	2	-	-	2.25

Student % wise Distribution



Sr No	Assessment Title	Type	Total Marks	Avg Marks	Threshold in %	No of Students Scoring										Total Students Above Threshold
						0-10%	11-20%	21-30%	31-40%	41-50%	51-60%	61-70%	71-80%	81-90%	91-100%	
1	Unit 1	F	10	7.91	50	5	0	0	0	1	2	5	7	10	19	44
2	Unit 2	F	10	5.69	50	5	0	0	1	7	17	15	3	1	0	43
3	External Exam	S	30	16.35	50	3	0	0	3	1	22	11	2	0	0	36

CO Indirect Attainment

Course Exit Survey - BSW - SEM 2

Q1	Were you able to identify the values, principles, and ethics of social work practice with individuals and families?
Scale	Strongly Agree <input type="radio"/> Agree <input type="radio"/> Disagree <input type="radio"/>
Q2	Were you able to explain family structures, roles, and life cycles in the Indian context?
Scale	Strongly Agree <input type="radio"/> Agree <input type="radio"/> Disagree <input type="radio"/>
Q3	Were you able to use assessment tools like PIE, ecomaps, and genograms for client evaluation?
Scale	Strongly Agree <input type="radio"/> Agree <input type="radio"/> Disagree <input type="radio"/>
Q4	Were you able to assess intervention strategies using the 5 Ps framework for effective social work practice?
Scale	Strongly Agree <input type="radio"/> Agree <input type="radio"/> Disagree <input type="radio"/>

CO Attainment

CO	Direct Attainment	Indirect Attainment	Final Attainment	Target	Gap	Justification
CO1	1.2	1	1.15	1.75	-0.6	-
CO2	1.2	1	1.15	1.87	-0.72	-
CO3	0	1	0.2	2.25	-2.04	-
CO4	1.2	1	1.15	2.37	-1.22	-

Average CO Attainment : 0.91

PO Direct Attainment

Weighted Average Matrix

POs	PO1	PO2	PO3	PO4	PO5	PO6	PO7	PO8
Weighted Avg	2.25	2.25	2.5	2.25	2.25	2	1.5	1.5

Average CO Attainment : 0.91

POs	PO1	PO2	PO3	PO4	PO5	PO6	PO7	PO8
Calculation	2.25 (0.91)/ 3	2.25 (0.91)/ 3	2.5 (0.91)/ 3	2.25 (0.91)/ 3	2.25 (0.91)/ 3	2 (0.91)/ 3	1.5 (0.91)/ 3	1.5 (0.91)/ 3
Direct Attainment	0.68	0.68	0.76	0.68	0.68	0.61	0.46	0.46

COURSE OVERVIEW | BSW



Human Growth and Development

Course Overview

Program Outcomes

PO1

Graduates will critically analyze social realities, understand their changing dynamics, and actively engage in processes that contribute to positive social transformation.

PO2

They will demonstrate an in-depth understanding of diverse communities, their unique challenges, and systemic inequalities, and advocate for social justice in their professional practice.

PO3

Graduates will apply appropriate social work methods and strategies to effectively work with individuals, groups, and communities, addressing various social issues.

PO4

They will embody professional social work values and ethics, ensuring integrity, respect, and accountability in all aspects of their practice.

PO5

Graduates will develop problem-solving abilities and intervention strategies tailored to the needs of marginalized and vulnerable populations.

PO6

They will integrate research and evidence-based knowledge to design, implement, and evaluate social work interventions effectively.

PO7

Graduates will exhibit strong communication skills and the ability to collaborate with multidisciplinary teams to address social challenges holistically.

PO8

They will demonstrate a commitment to lifelong learning, staying informed about emerging trends and practices in the field of social work.

Course Outcomes

- | | |
|-----|---|
| CO1 | To understand and describe the core concepts of human growth and development, including its principles and relevance in the field of social work |
| CO2 | o identify and explain the key milestones and challenges in physical, cognitive, and psychosocial development across various stages of the lifespan, from infancy to Adult hood. |
| CO3 | To analyze the impact of socio-cultural factors such as family, peers, media, and education on personality development, applying the nature vs. nurture debate to real-life scenarios |
| CO4 | To compare and contrast different theoretical perspectives on including theories by JeanPiaget ,Vygotsky and Lawrence Kohlberg. |

CO-PO Mapping

courseOutcomes	PO1	PO2	PO3	PO4	PO5	PO6	PO7	PO8	Average
COOE 103 .1	-	-	-	-	-	-	-	-	
COOE 103 .2	-	-	-	-	-	-	-	-	
COOE 103 .3	-	-	-	-	-	-	-	-	
COOE 103 .4	-	-	-	-	-	-	-	-	
Average	-	-	-	-	-	-	-	-	-

CO Attainment Weightages

Direct Attainment	Indirect Attainment
80 %	20 %

CO Assessment Weightages

Formative (CIE)	Summative (SEE)
40 %	60 %

CO targets & Attainment Levels

CO	Target	Direct Attainment levels			Indirect Attainment levels		
		Level 1	Level 2	Level 3	Level 1	Level 2	Level 3
CO1		0 - 40	41 - 50	51 - 100	0 - 40	41 - 50	51 - 100
CO2		0 - 40	41 - 50	51 - 100	0 - 40	41 - 50	51 - 100
CO3		0 - 40	41 - 50	51 - 100	0 - 40	41 - 50	51 - 100
CO4		0 - 40	41 - 50	51 - 100	0 - 40	41 - 50	51 - 100

CO Coverage

COs
%

PO Direct Attainment

Weighted Average Matrix

POs	PO1	PO2	PO3	PO4	PO5	PO6	PO7	PO8
Weighted Avg	-	-	-	-	-	-	-	-

Average CO Attainment : 0

POs	PO1	PO2	PO3	PO4	PO5	PO6	PO7	PO8
Calculation	0 (0)/ 3	0 (0)/ 3	0 (0)/ 3	0 (0)/ 3	0 (0)/ 3	0 (0)/ 3	0 (0)/ 3	0 (0)/ 3
Direct Attainment	0	0	0	0	0	0	0	0

COURSE OVERVIEW | BSW



Individual and Family Interventions

Course Overview

Program Outcomes

- | | |
|------------|---|
| PO1 | Graduates will critically analyze social realities, understand their changing dynamics, and actively engage in processes that contribute to positive social transformation. |
| PO2 | They will demonstrate an in-depth understanding of diverse communities, their unique challenges, and systemic inequalities, and advocate for social justice in their professional practice. |
| PO3 | Graduates will apply appropriate social work methods and strategies to effectively work with individuals, groups, and communities, addressing various social issues. |
| PO4 | They will embody professional social work values and ethics, ensuring integrity, respect, and accountability in all aspects of their practice. |
| PO5 | Graduates will develop problem-solving abilities and intervention strategies tailored to the needs of marginalized and vulnerable populations. |
| PO6 | They will integrate research and evidence-based knowledge to design, implement, and evaluate social work interventions effectively. |
| PO7 | Graduates will exhibit strong communication skills and the ability to collaborate with multidisciplinary teams to address social challenges holistically. |
| PO8 | They will demonstrate a commitment to lifelong learning, staying informed about emerging trends and practices in the field of social work. |

Course Outcomes

- | | |
|------------|---|
| CO1 | To Remember Identify key intervention techniques such as genograms, ecomaps, and fact-finding tools. |
| CO2 | To Understand Explain core relationship qualities like warmth, empathy, and unconditional positive regard. |
| CO3 | To Apply Demonstrate active listening, empathic responding, and case documentation in social work practice. |
| CO4 | To Analyze Evaluate professional relationships and ethical dilemmas in interpersonal practice. |

CO-PO Mapping

courseOutcomes	PO1	PO2	PO3	PO4	PO5	PO6	PO7	PO8	Average
CO101.1	2	2	3	2	2	2	1	1	1.87
CO101.2	2	3	2	3	1	1	2	1	1.87
CO101.3	2	2	3	3	2	2	3	2	2.37
CO101.4	3	2	2	3	2	3	2	2	2.37
Average	2.25	2.25	2.5	2.75	1.75	2	2	1.5	-

CO Attainment Weightages

Direct Attainment	Indirect Attainment
80 %	20 %

CO Assessment Weightages

Formative (CIE)	Summative (SEE)
40 %	60 %

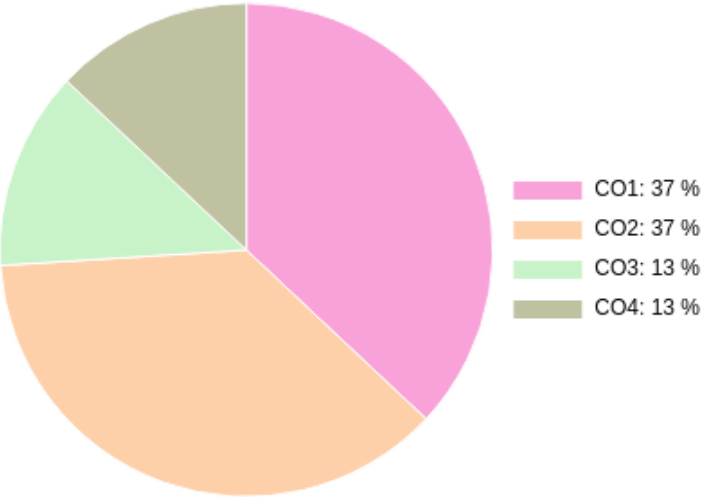
CO targets & Attainment Levels

CO	Target	Direct Attainment levels			Indirect Attainment levels		
		Level 1	Level 2	Level 3	Level 1	Level 2	Level 3
CO1	1.87	0 - 40	41 - 50	51 - 100	0 - 40	41 - 50	51 - 100
CO2	1.87	0 - 40	41 - 50	51 - 100	0 - 40	41 - 50	51 - 100
CO3	2.37	0 - 40	41 - 50	51 - 100	0 - 40	41 - 50	51 - 100
CO4	2.37	0 - 40	41 - 50	51 - 100	0 - 40	41 - 50	51 - 100

Exam Results

Exam Name	Threshold
Unit 1	50%
Unit 2	50%
External Exam	50%

CO Coverage



COs	CO1	CO2	CO3	CO4
50	18.5	18.5	6.5	6.5
%	37.0	37.0	13.0	13.0

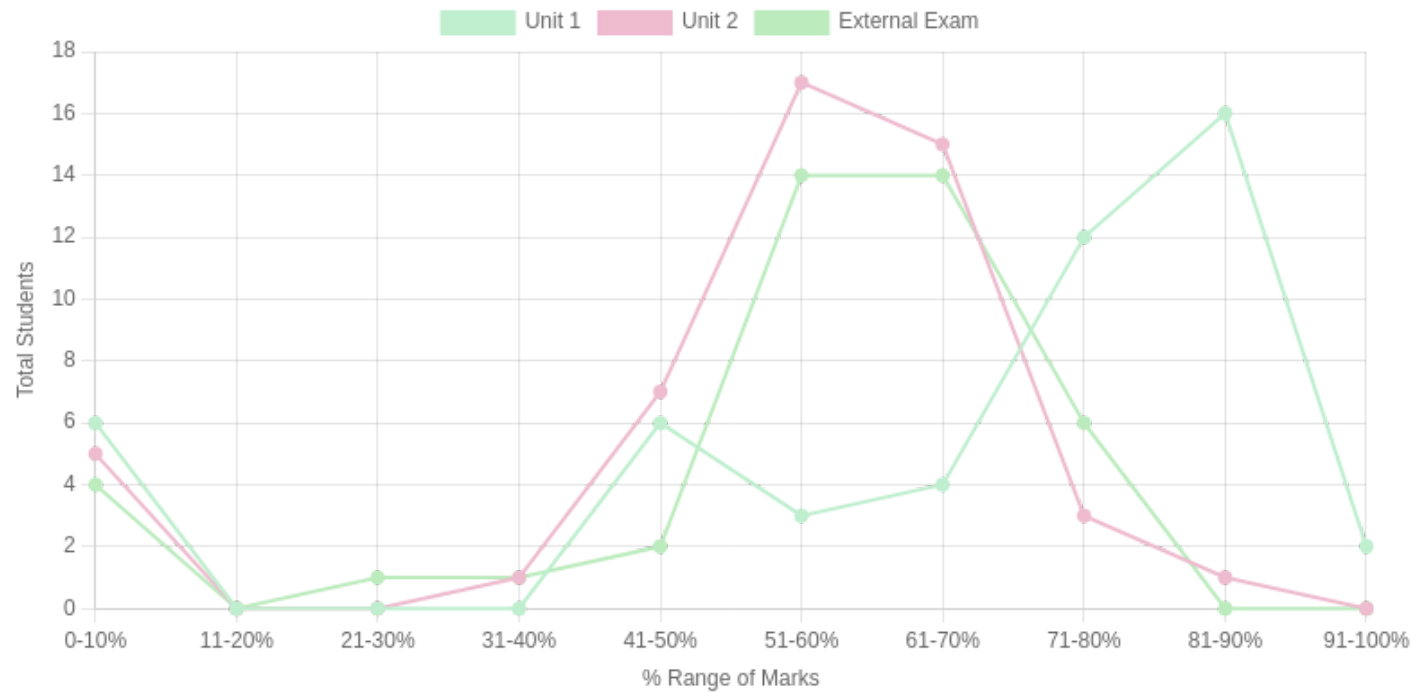
Formative (CIE) Assessments

Sr No	Exam Name	Total Marks	Threshold in %	CO1	CO2	CO3	CO4	CO5	CO6	Avg Attainment
1	Unit 1	10	50	3	3	3	3	-	-	3
2	Unit 2	10	50	3	3	3	3	-	-	3

Summative (SEE) Assessments

Sr No	Exam Name	Total Marks	Threshold in %	CO1	CO2	CO3	CO4	CO5	CO6	Avg Attainment
3	External Exam	30	50	3	3	3	3	-	-	3

Student % wise Distribution



Sr No	Assessment Title	Type	Total Marks	Avg Marks	Threshold in %	No of Students Scoring										Total Students Above Threshold
						0-10%	11-20%	21-30%	31-40%	41-50%	51-60%	61-70%	71-80%	81-90%	91-100%	
1	Unit 1	F	10	6.85	50	6	0	0	0	6	3	4	12	16	2	43
2	Unit 2	F	10	5.69	50	5	0	0	1	7	17	15	3	1	0	43
3	External Exam	S	30	16.59	50	4	0	1	1	2	14	14	6	0	0	35

CO Indirect Attainment

Course Exit Survey - BSW - SEM 2

Q1	Were you able to identify key intervention techniques such as genograms, ecomaps, and fact-finding tools?
Scale	Strongly Agree <input type="radio"/> Agree <input type="radio"/> Disagree <input type="radio"/>
Q2	Were you able to explain core relationship qualities like warmth, empathy, and unconditional positive regard?
Scale	Strongly Agree <input type="radio"/> Agree <input type="radio"/> Disagree <input type="radio"/>
Q3	Were you able to demonstrate active listening, empathic responding, and case documentation in social work practice?
Scale	Strongly Agree <input type="radio"/> Agree <input type="radio"/> Disagree <input type="radio"/>
Q4	Were you able to evaluate professional relationships and ethical dilemmas in interpersonal practice?
Scale	Strongly Agree <input type="radio"/> Agree <input type="radio"/> Disagree <input type="radio"/>

CO Attainment

CO	Direct Attainment	Indirect Attainment	Final Attainment	Target	Gap	Justification
CO1	3	0	2.4	1.87	0.52	-
CO2	3	0	2.4	1.87	0.52	-
CO3	3	0	2.4	2.37	0.02	-
CO4	3	0	2.4	2.37	0.02	-

Average CO Attainment : 2.4

PO Direct Attainment

Weighted Average Matrix

POs	PO1	PO2	PO3	PO4	PO5	PO6	PO7	PO8
Weighted Avg	2.25	2.25	2.5	2.75	1.75	2	2	1.5

Average CO Attainment : 2.4

POs	PO1	PO2	PO3	PO4	PO5	PO6	PO7	PO8
Calculation	2.25 (2.4)/ 3	2.25 (2.4)/ 3	2.5 (2.4)/ 3	2.75 (2.4)/ 3	1.75 (2.4)/ 3	2 (2.4)/ 3	2 (2.4)/ 3	1.5 (2.4)/ 3
Direct Attainment	1.80	1.80	2.00	2.20	1.40	1.60	1.60	1.20

COURSE OVERVIEW | BSW



Information and Communication Technology

Course Overview

Program Outcomes

- | | |
|------------|---|
| PO1 | Graduates will critically analyze social realities, understand their changing dynamics, and actively engage in processes that contribute to positive social transformation. |
| PO2 | They will demonstrate an in-depth understanding of diverse communities, their unique challenges, and systemic inequalities, and advocate for social justice in their professional practice. |
| PO3 | Graduates will apply appropriate social work methods and strategies to effectively work with individuals, groups, and communities, addressing various social issues. |
| PO4 | They will embody professional social work values and ethics, ensuring integrity, respect, and accountability in all aspects of their practice. |
| PO5 | Graduates will develop problem-solving abilities and intervention strategies tailored to the needs of marginalized and vulnerable populations. |
| PO6 | They will integrate research and evidence-based knowledge to design, implement, and evaluate social work interventions effectively. |
| PO7 | Graduates will exhibit strong communication skills and the ability to collaborate with multidisciplinary teams to address social challenges holistically. |
| PO8 | They will demonstrate a commitment to lifelong learning, staying informed about emerging trends and practices in the field of social work. |

Course Outcomes

- | | |
|------------|--|
| CO1 | To Remember fundamental concepts, forms, and significance of creative arts, including music, dance, and drama. |
| CO2 | To Understand Explain the distinct characteristics, representation, and pedagogical approaches of various creative arts disciplines. |
| CO3 | To Apply Demonstrate foundational skills in music, dance, and drama through practical exercises and performances. |
| CO4 | To Evaluate Plan and implement developmentally appropriate creative arts learning experiences for diverse audiences. |

CO-PO Mapping

courseOutcomes	PO1	PO2	PO3	PO4	PO5	PO6	PO7	PO8	Average
COVEC 102.1	1	1	1	1	1	1	1	2	1.12
COVEC 102.2	2	2	2	2	2	2	2	2	2
COVEC 102.3	2	2	3	2	2	2	3	2	2.25
COVEC 102.4	3	3	2	2	2	3	2	2	2.37
Average	2	2	2	1.75	1.75	2	2	2	-

CO Attainment Weightages

Direct Attainment	Indirect Attainment
80 %	20 %

CO Assessment Weightages

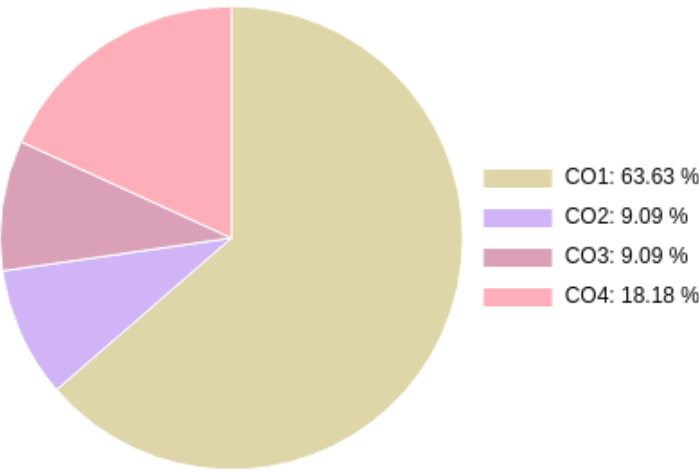
Formative (CIE)	Summative (SEE)
40 %	60 %

Exam Results

Exam Name	Threshold
Unit 1	50%
Unit 2	50%

Exam Name	Threshold
Unit 3	50%
External Exam	50%

CO Coverage



COs	CO1	CO2	CO3	CO4
55	5.0	5.0	35.0	10.0
%	9.1	9.1	63.6	18.2

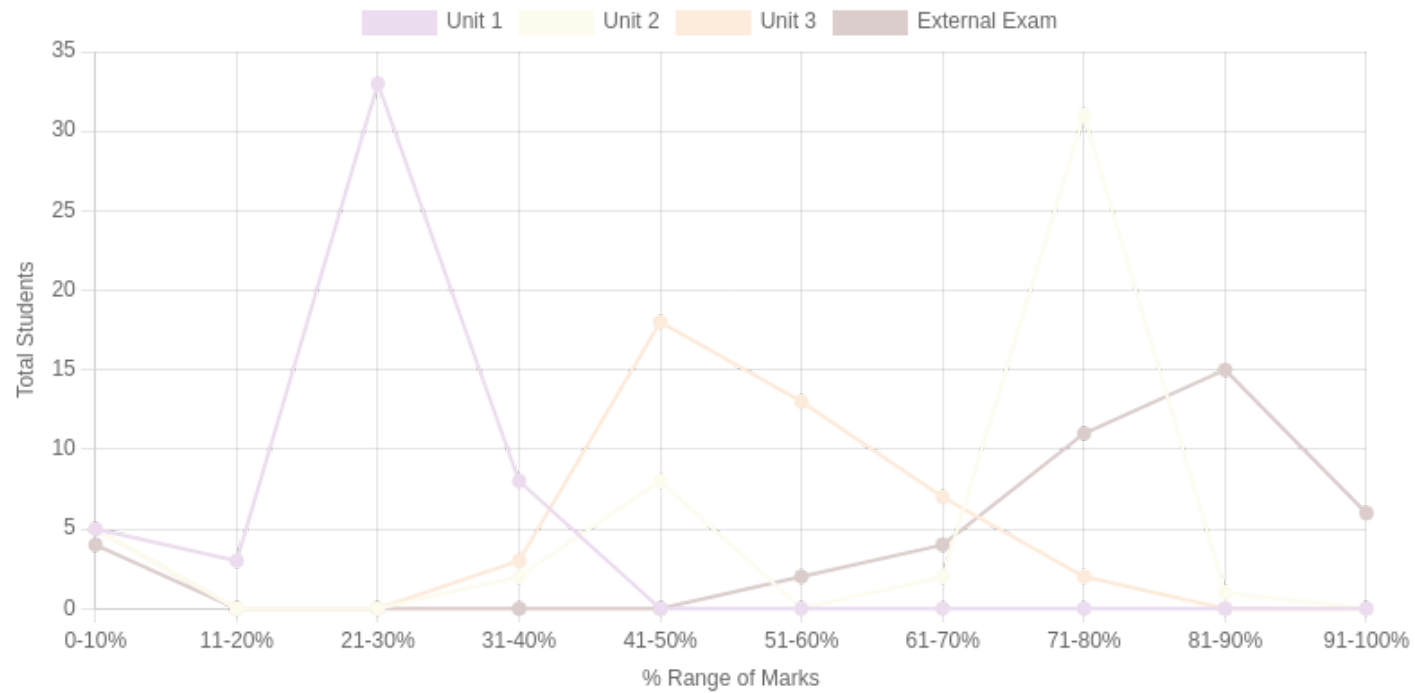
Formative (CIE) Assessments

Sr No	Exam Name	Total Marks	Threshold in %	CO1	CO2	CO3	CO4	CO5	CO6	Avg Attainment
1	Unit 1	10	50	-	-	1	-	-	-	1
2	Unit 2	5	50	-	-	3	-	-	-	3
3	Unit 3	10	50	-	-	3	-	-	-	3

Summative (SEE) Assessments

Sr No	Exam Name	Total Marks	Threshold in %	CO1	CO2	CO3	CO4	CO5	CO6	Avg Attainment
4	External Exam	30	50	3	3	3	3	-	-	3

Student % wise Distribution



Sr No	Assessment Title	Type	Total Marks	Avg Marks	Threshold in %	No of Students Scoring										Total Students Above Threshold
						0-10%	11-20%	21-30%	31-40%	41-50%	51-60%	61-70%	71-80%	81-90%	91-100%	
1	Unit 1	F	10	2.46	50	5	3	33	8	0	0	0	0	0	0	0
2	Unit 2	F	5	3.25	50	5	0	0	2	8	0	2	31	1	0	42
3	Unit 3	F	10	5.1	50	5	0	0	3	18	13	7	2	0	0	40
4	External Exam	S	30	22	50	4	0	0	0	0	2	4	11	15	6	38

CO Indirect Attainment

Course Exit Survey - BSW - SEM 2

Q1	Were you able to recall the history, evolution, and fundamental concepts of computers and information technology?
Scale	Strongly Agree <input type="radio"/> Agree <input type="radio"/> Disagree <input type="radio"/>
Q2	Were you able to describe the opportunities and challenges associated with the internet and information technology in social work?
Scale	Strongly Agree <input type="radio"/> Agree <input type="radio"/> Disagree <input type="radio"/>
Q3	Were you able to demonstrate proficiency in using MS Word, PowerPoint, and Excel for documentation, presentation, and data management?
Scale	Strongly Agree <input type="radio"/> Agree <input type="radio"/> Disagree <input type="radio"/>
Q4	Were you able to utilize online resources and government portals to search for relevant schemes and information for social work practice?
Scale	Strongly Agree <input type="radio"/> Agree <input type="radio"/> Disagree <input type="radio"/>

CO Attainment

CO	Direct Attainment	Indirect Attainment	Final Attainment	Target	Gap	Justification
CO1	1.79	1	1.63	-	-	-
CO2	1.79	1	1.63	-	-	-
CO3	2.73	1	2.38	-	-	-
CO4	1.79	1	1.63	-	-	-

Average CO Attainment : 1.81

PO Direct Attainment

Weighted Average Matrix

POs	PO1	PO2	PO3	PO4	PO5	PO6	PO7	PO8
Weighted Avg	2	2	2	1.75	1.75	2	2	2

Average CO Attainment : 1.81

POs	PO1	PO2	PO3	PO4	PO5	PO6	PO7	PO8
Calculation	2 (1.81)/ 3	2 (1.81)/ 3	2 (1.81)/ 3	1.75 (1.81)/ 3	1.75 (1.81)/ 3	2 (1.81)/ 3	2 (1.81)/ 3	2 (1.81)/ 3
Direct Attainment	1.21	1.21	1.21	1.06	1.06	1.21	1.21	1.21

COURSE OVERVIEW | BSW



Introduction to Creative Arts

Course Overview

Program Outcomes

- | | |
|------------|---|
| PO1 | Graduates will critically analyze social realities, understand their changing dynamics, and actively engage in processes that contribute to positive social transformation. |
| PO2 | They will demonstrate an in-depth understanding of diverse communities, their unique challenges, and systemic inequalities, and advocate for social justice in their professional practice. |
| PO3 | Graduates will apply appropriate social work methods and strategies to effectively work with individuals, groups, and communities, addressing various social issues. |
| PO4 | They will embody professional social work values and ethics, ensuring integrity, respect, and accountability in all aspects of their practice. |
| PO5 | Graduates will develop problem-solving abilities and intervention strategies tailored to the needs of marginalized and vulnerable populations. |
| PO6 | They will integrate research and evidence-based knowledge to design, implement, and evaluate social work interventions effectively. |
| PO7 | Graduates will exhibit strong communication skills and the ability to collaborate with multidisciplinary teams to address social challenges holistically. |
| PO8 | They will demonstrate a commitment to lifelong learning, staying informed about emerging trends and practices in the field of social work. |

Course Outcomes

- | | |
|------------|--|
| CO1 | To Remember fundamental concepts, forms, and significance of creative arts, including music, dance, and drama. |
| CO2 | To Understand Explain the distinct characteristics, representation, and pedagogical approaches of various creative arts disciplines. |
| CO3 | To Apply Demonstrate foundational skills in music, dance, and drama through practical exercises and performances. |
| CO4 | To Evaluate Plan and implement developmentally appropriate creative arts learning experiences for diverse audiences. |

CO-PO Mapping

courseOutcomes	PO1	PO2	PO3	PO4	PO5	PO6	PO7	PO8	Average
COCC 102.1	1	1	1	1	1	1	-	-	1
COCC 102.2	1	2	1	2	-	2	-	-	1.6
COCC 102.3	2	2	1	2	2	2	-	-	1.83
COCC 102.4	-	-	-	-	-	-	-	-	
Average	1.33	1.66	1	1.66	1.5	1.66	-	-	-

CO Attainment Weightages

Direct Attainment	Indirect Attainment
80 %	20 %

CO Assessment Weightages

Formative (CIE)	Summative (SEE)
40 %	60 %

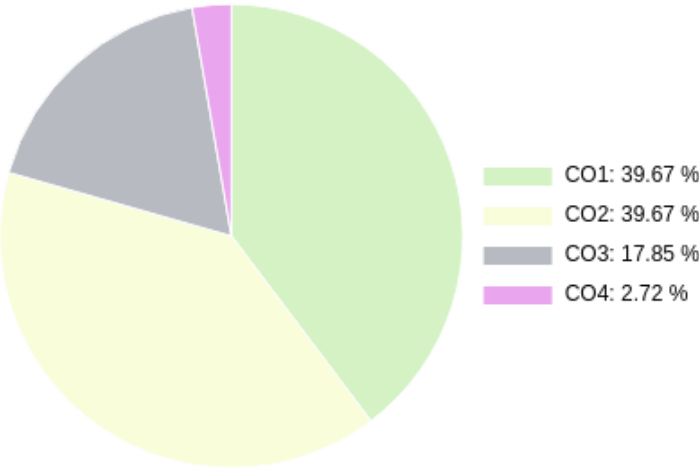
CO targets & Attainment Levels

CO	Target	Direct Attainment levels			Indirect Attainment levels		
		Level 1	Level 2	Level 3	Level 1	Level 2	Level 3
CO1	1	0 - 40	41 - 50	51 - 100	0 - 40	41 - 50	51 - 100
CO3	1.83	0 - 40	41 - 50	51 - 100	0 - 40	41 - 50	51 - 100
CO2	1.6	0 - 40	41 - 50	51 - 100	0 - 40	41 - 50	51 - 100
CO4		0 - 40	41 - 50	51 - 100	0 - 40	41 - 50	51 - 100

Exam Results

Exam Name	Threshold
Unit 1	50%
Unit 2	50%
Unit 3	50%
External Exam	50%

CO Coverage



COs	CO1	CO2	CO3	CO4
55	21.8	21.8	9.8	1.5
%	39.7	39.7	17.9	2.7

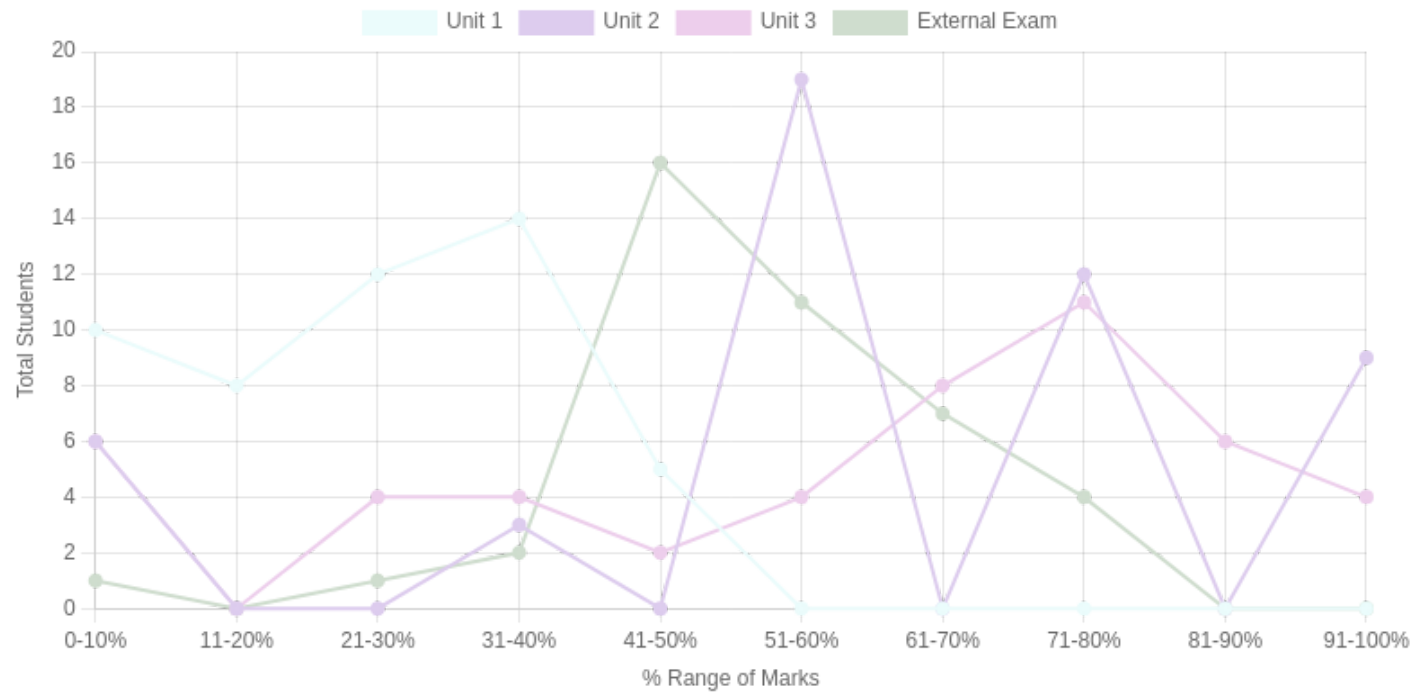
Formative (CIE) Assessments

Sr No	Exam Name	Total Marks	Threshold in %	CO1	CO2	CO3	CO4	CO5	CO6	Avg Attainment
1	Unit 1	10	50	1	1	1	-	-	-	1
2	Unit 2	5	50	3	3	3	-	-	-	3
3	Unit 3	10	50	3	3	3	-	-	-	3

Summative (SEE) Assessments

Sr No	Exam Name	Total Marks	Threshold in %	CO1	CO2	CO3	CO4	CO5	CO6	Avg Attainment
4	External Exam	30	50	3	3	-	-	-	-	3

Student % wise Distribution



Sr No	Assessment Title	Type	Total Marks	Avg Marks	Threshold in %	No of Students Scoring										Total Students Above Threshold
						0-10%	11-20%	21-30%	31-40%	41-50%	51-60%	61-70%	71-80%	81-90%	91-100%	
1	Unit 1	F	10	2.75	50	10	8	12	14	5	0	0	0	0	0	5
2	Unit 2	F	5	3.18	50	6	0	0	3	0	19	0	12	0	9	40
3	Unit 3	F	10	6.12	50	6	0	4	4	2	4	8	11	6	4	35
4	External Exam	S	30	16.23	50	1	0	1	2	16	11	7	4	0	0	30

CO Indirect Attainment

Course Exit Survey - BSW - SEM 2

Q1	Were you able to recall fundamental concepts, forms, and significance of creative arts, including music, dance, and drama?
Scale	Strongly Agree <input type="radio"/> Agree <input type="radio"/> Disagree <input type="radio"/>
Q2	Were you able to explain the distinct characteristics, representation, and pedagogical approaches of various creative arts disciplines?
Scale	Strongly Agree <input type="radio"/> Agree <input type="radio"/> Disagree <input type="radio"/>
Q3	Were you able to demonstrate foundational skills in music, dance, and drama through practical exercises and performances?
Scale	Strongly Agree <input type="radio"/> Agree <input type="radio"/> Disagree <input type="radio"/>
Q4	Were you able to plan and implement developmentally appropriate creative arts learning experiences for diverse audiences?
Scale	Strongly Agree <input type="radio"/> Agree <input type="radio"/> Disagree <input type="radio"/>

CO Attainment

CO	Direct Attainment	Indirect Attainment	Final Attainment	Target	Gap	Justification
CO1	2.73	1	2.38	1	1.38	-
CO2	2.73	1	2.38	1.6	0.77	-
CO3	0.93	1	0.94	1.83	-0.89	-

Average CO Attainment : 1.89

PO Direct Attainment

Weighted Average Matrix

POs	PO1	PO2	PO3	PO4	PO5	PO6	PO7	PO8
Weighted Avg	1.33	1.66	1	1.66	1.5	1.66	-	-

Average CO Attainment : 1.89

POs	PO1	PO2	PO3	PO4	PO5	PO6	PO7	PO8
Calculation	1.33 (1.89)/ 3	1.66 (1.89)/ 3	1 (1.89)/ 3	1.66 (1.89)/ 3	1.5 (1.89)/ 3	1.66 (1.89)/ 3	0 (1.89)/ 3	0 (1.89)/ 3
Direct Attainment	0.84	1.05	0.63	1.05	0.94	1.05	0	0

COURSE OVERVIEW | BSW



Life Skills Education

Course Overview

Program Outcomes

- | | |
|------------|---|
| PO1 | Graduates will critically analyze social realities, understand their changing dynamics, and actively engage in processes that contribute to positive social transformation. |
| PO2 | They will demonstrate an in-depth understanding of diverse communities, their unique challenges, and systemic inequalities, and advocate for social justice in their professional practice. |
| PO3 | Graduates will apply appropriate social work methods and strategies to effectively work with individuals, groups, and communities, addressing various social issues. |
| PO4 | They will embody professional social work values and ethics, ensuring integrity, respect, and accountability in all aspects of their practice. |
| PO5 | Graduates will develop problem-solving abilities and intervention strategies tailored to the needs of marginalized and vulnerable populations. |
| PO6 | They will integrate research and evidence-based knowledge to design, implement, and evaluate social work interventions effectively. |
| PO7 | Graduates will exhibit strong communication skills and the ability to collaborate with multidisciplinary teams to address social challenges holistically. |
| PO8 | They will demonstrate a commitment to lifelong learning, staying informed about emerging trends and practices in the field of social work. |

Course Outcomes

- | | |
|------------|---|
| CO1 | To define and describe key life skills, including social, emotional, and critical thinking skills, and their relevance to social work |
| CO2 | To explain the significance of life skills education in personal, professional, and societal contexts, referencing WHO's 10 Life Skills |
| CO3 | To demonstrate the ability to manage emotions, develop interpersonal relationships, and communicate effectively in professional and social settings |
| CO4 | To assess real-life situations using critical and creative thinking techniques such as logic, ethics, brainstorming, and decision trees |

CO-PO Mapping

courseOutcomes	PO1	PO2	PO3	PO4	PO5	PO6	PO7	PO8	Average
COVSC 102.1	2	2	1	2	1	1	1	2	1.5
COVSC 102.2	2	3	2	2	2	1	2	2	2
COVSC 102.3	3	3	3	3	3	2	3	2	2.75
COVSC 102.4	3	3	2	2	3	3	2	2	2.5
Average	2.5	2.75	2	2.25	2.25	1.75	2	2	-

CO Attainment Weightages

Direct Attainment	Indirect Attainment
80 %	20 %

CO Assessment Weightages

Formative (CIE)	Summative (SEE)
40 %	60 %

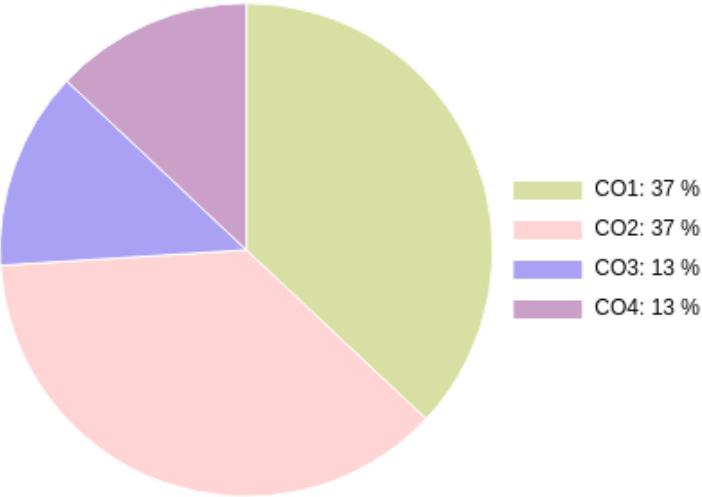
CO targets & Attainment Levels

CO	Target	Direct Attainment levels			Indirect Attainment levels		
		Level 1	Level 2	Level 3	Level 1	Level 2	Level 3
CO1	1.5	0 - 40	41 - 50	51 - 100	0 - 40	41 - 50	51 - 100
CO2	2	0 - 40	41 - 50	51 - 100	0 - 40	41 - 50	51 - 100
CO3	2.75	0 - 40	41 - 50	51 - 100	0 - 40	41 - 50	51 - 100
CO4	2.5	0 - 40	41 - 50	51 - 100	0 - 40	41 - 50	51 - 100

Exam Results

Exam Name	Threshold
Unit 1	50%
Unit 2	50%
Unit 3	50%
External Exam	50%

CO Coverage



COs	CO1	CO2	CO3	CO4
50	18.5	18.5	6.5	6.5
%	37.0	37.0	13.0	13.0

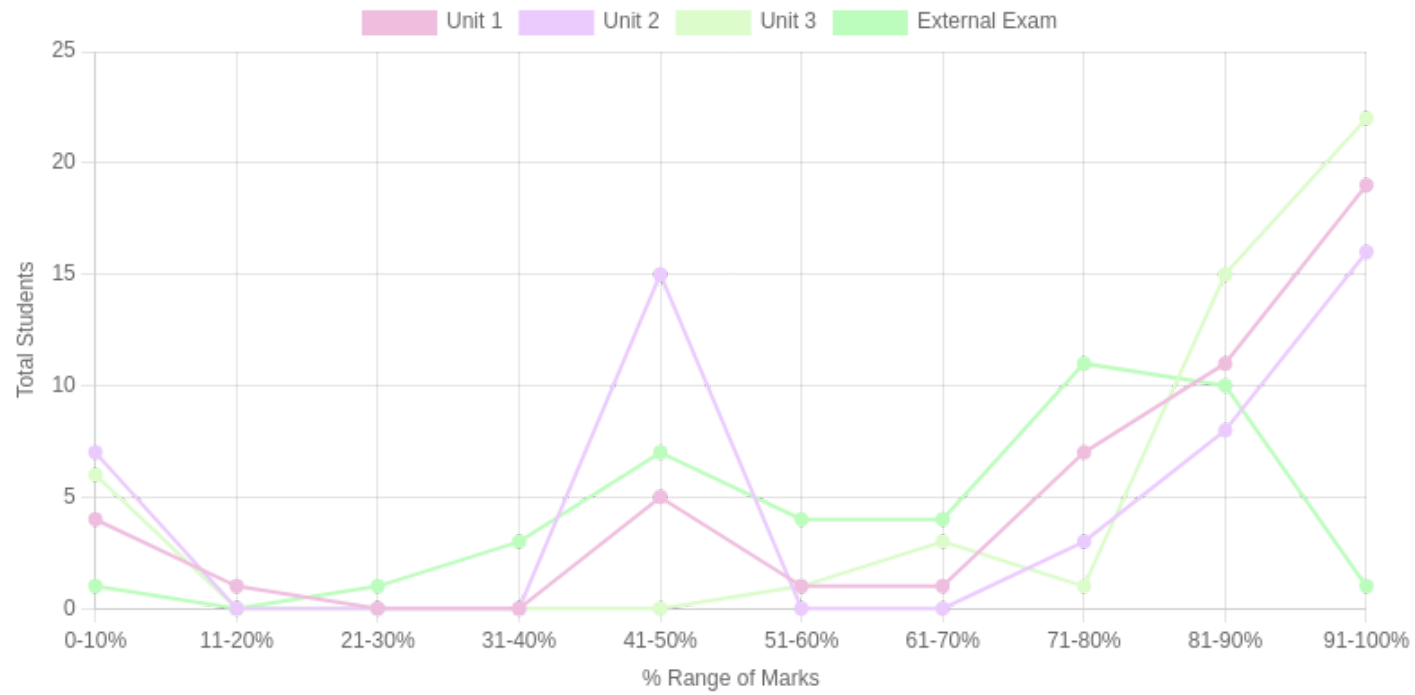
Formative (CIE) Assessments

Sr No	Exam Name	Total Marks	Threshold in %	CO1	CO2	CO3	CO4	CO5	CO6	Avg Attainment
1	Unit 1	5	50	3	3	3	3	-	-	3
2	Unit 2	5	50	3	3	3	3	-	-	3
3	Unit 3	10	50	3	3	3	3	-	-	3

Summative (SEE) Assessments

Sr No	Exam Name	Total Marks	Threshold in %	CO1	CO2	CO3	CO4	CO5	CO6	Avg Attainment
4	External Exam	30	50	3	3	3	3	-	-	3

Student % wise Distribution



Sr No	Assessment Title	Type	Total Marks	Avg Marks	Threshold in %	No of Students Scoring										Total Students Above Threshold
						0-10%	11-20%	21-30%	31-40%	41-50%	51-60%	61-70%	71-80%	81-90%	91-100%	
1	Unit 1	F	5	3.82	50	4	1	0	0	5	1	1	7	11	19	43
2	Unit 2	F	5	3.27	50	7	0	0	0	15	0	0	3	8	16	36
3	Unit 3	F	10	8.09	50	6	0	0	0	0	1	3	1	15	22	42
4	External Exam	S	30	19.83	50	1	0	1	3	7	4	4	11	10	1	32

CO Indirect Attainment

Course Exit Survey - BSW - SEM 2

Q1	Were you able to define and describe key life skills, including social, emotional, and critical thinking skills, and their relevance to social work?
Scale	Strongly Agree <input type="radio"/> Agree <input type="radio"/> Disagree <input type="radio"/>
Q2	Were you able to explain the significance of life skills education in personal, professional, and societal contexts, referencing WHO's 10 Life Skills?
Scale	Strongly Agree <input type="radio"/> Agree <input type="radio"/> Disagree <input type="radio"/>
Q3	Were you able to demonstrate the ability to manage emotions, develop interpersonal relationships, and communicate effectively in professional and social settings?
Scale	Strongly Agree <input type="radio"/> Agree <input type="radio"/> Disagree <input type="radio"/>
Q4	Were you able to assess real-life situations using critical and creative thinking techniques such as logic, ethics, brainstorming, and decision trees?
Scale	Strongly Agree <input type="radio"/> Agree <input type="radio"/> Disagree <input type="radio"/>

CO Attainment

CO	Direct Attainment	Indirect Attainment	Final Attainment	Target	Gap	Justification
CO1	3	1	2.6	1.5	1.1	-
CO2	3	1	2.6	2	0.6	-
CO3	3	1	2.6	2.75	-0.14	-
CO4	3	1	2.6	2.5	0.1	-

Average CO Attainment : 2.6

PO Direct Attainment

Weighted Average Matrix

POs	PO1	PO2	PO3	PO4	PO5	PO6	PO7	PO8
Weighted Avg	2.5	2.75	2	2.25	2.25	1.75	2	2

Average CO Attainment : 2.6

POs	PO1	PO2	PO3	PO4	PO5	PO6	PO7	PO8
Calculation	2.5 (2.6)/ 3	2.75 (2.6)/ 3	2 (2.6)/ 3	2.25 (2.6)/ 3	2.25 (2.6)/ 3	1.75 (2.6)/ 3	2 (2.6)/ 3	2 (2.6)/ 3
Direct Attainment	2.17	2.38	1.73	1.95	1.95	1.52	1.73	1.73

COURSE OVERVIEW | BSW



Media Skills

Course Overview

Program Outcomes

- | | |
|------------|---|
| PO1 | Graduates will critically analyze social realities, understand their changing dynamics, and actively engage in processes that contribute to positive social transformation. |
| PO2 | They will demonstrate an in-depth understanding of diverse communities, their unique challenges, and systemic inequalities, and advocate for social justice in their professional practice. |
| PO3 | Graduates will apply appropriate social work methods and strategies to effectively work with individuals, groups, and communities, addressing various social issues. |
| PO4 | They will embody professional social work values and ethics, ensuring integrity, respect, and accountability in all aspects of their practice. |
| PO5 | Graduates will develop problem-solving abilities and intervention strategies tailored to the needs of marginalized and vulnerable populations. |
| PO6 | They will integrate research and evidence-based knowledge to design, implement, and evaluate social work interventions effectively. |
| PO7 | Graduates will exhibit strong communication skills and the ability to collaborate with multidisciplinary teams to address social challenges holistically. |
| PO8 | They will demonstrate a commitment to lifelong learning, staying informed about emerging trends and practices in the field of social work. |

Course Outcomes

- | | |
|------------|---|
| CO1 | To Remember Identify key concepts of news media, including news values, reporting beats, and news writing structures. |
| CO2 | To Understand Explain the fundamentals of photography, including framing, lighting, and camera types. |
| CO3 | To Apply Demonstrate documentary filmmaking skills, including pre-production planning, interviewing, and editing. |
| CO4 | To Analyze Critically assess media's social, political, and cultural impact through participant observation and media analysis. |

CO-PO Mapping

courseOutcomes	PO1	PO2	PO3	PO4	PO5	PO6	PO7	PO8	Average
COSEC 102.1	2	2	1	1	1	1	1	1	1.25
COSEC 102.2	1	1	1	1	1	1	2	1	1.12
COSEC 102.3	2	2	2	2	2	2	3	2	2.12
COSEC 102.4	3	3	2	2	2	3	2	2	2.37
Average	2	2	1.5	1.5	1.5	1.75	2	1.5	-

CO Attainment Weightages

Direct Attainment	Indirect Attainment
80 %	20 %

CO Assessment Weightages

Formative (CIE)	Summative (SEE)
40 %	60 %

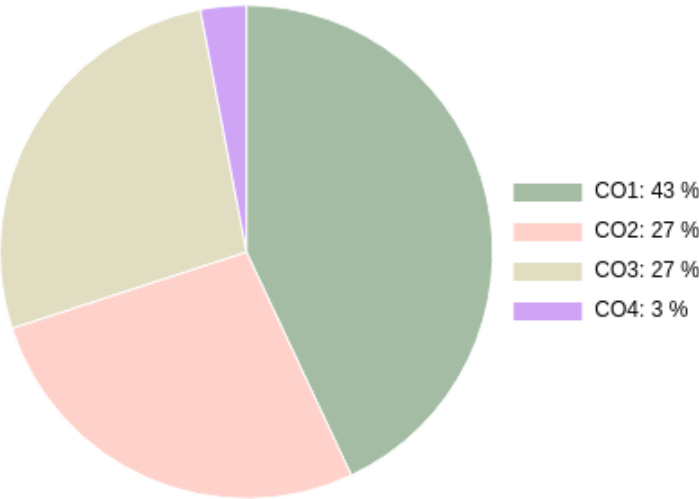
CO targets & Attainment Levels

CO	Target	Direct Attainment levels			Indirect Attainment levels		
		Level 1	Level 2	Level 3	Level 1	Level 2	Level 3
CO1	1.25	0 - 40	41 - 50	51 - 100	0 - 40	41 - 50	51 - 100
CO2	1.12	0 - 40	41 - 50	51 - 100	0 - 40	41 - 50	51 - 100
CO3	2.12	0 - 40	41 - 50	51 - 100	0 - 40	41 - 50	51 - 100
CO4	2.37	0 - 40	41 - 50	51 - 100	0 - 40	41 - 50	51 - 100

Exam Results

Exam Name	Threshold
Unit 1	50%
Unit 2	50%
Unit 3	50%
External Exam	50%

CO Coverage



COs	CO1	CO2	CO3	CO4
50	13.5	13.5	21.5	1.5
%	27.0	27.0	43.0	3.0

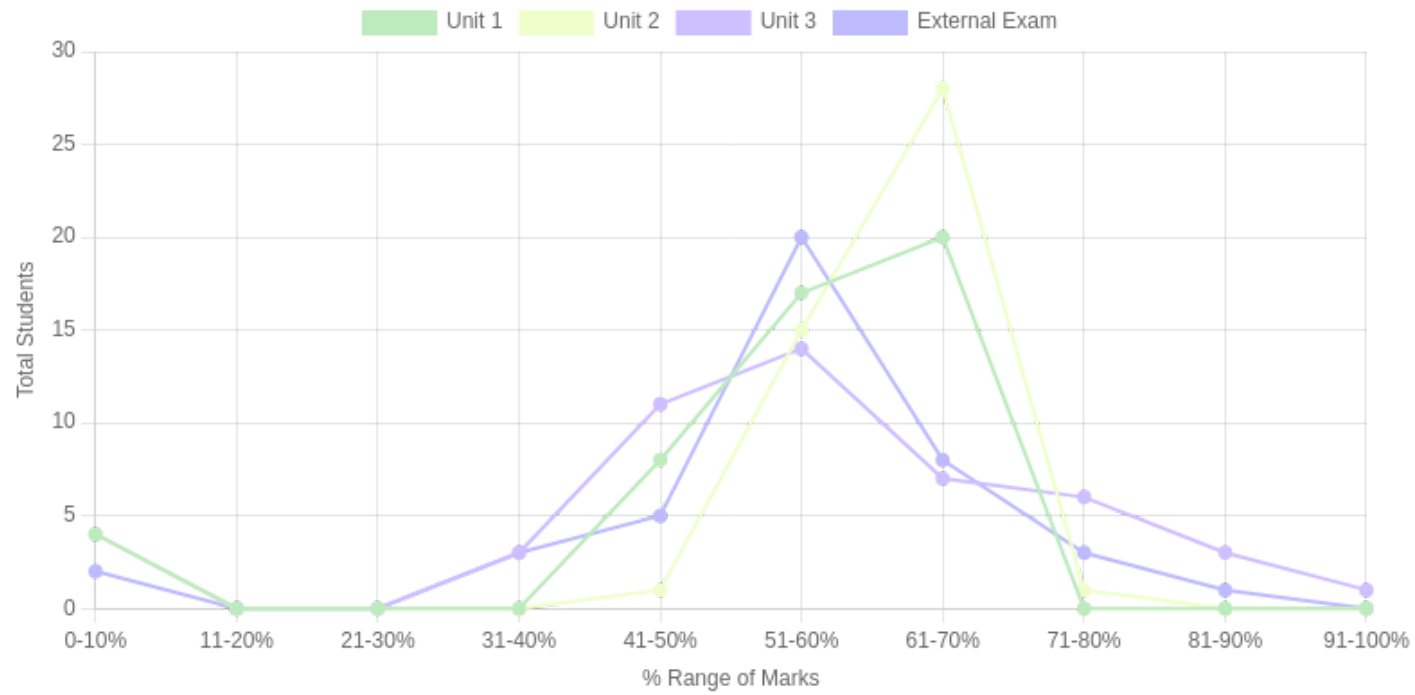
Formative (CIE) Assessments

Sr No	Exam Name	Total Marks	Threshold in %	CO1	CO2	CO3	CO4	CO5	CO6	Avg Attainment
1	Unit 1	5	50	-	-	3	-	-	-	3
2	Unit 2	5	50	-	-	3	-	-	-	3
3	Unit 3	10	50	-	-	3	-	-	-	3

Summative (SEE) Assessments

Sr No	Exam Name	Total Marks	Threshold in %	CO1	CO2	CO3	CO4	CO5	CO6	Avg Attainment
4	External Exam	30	50	3	3	3	3	-	-	3

Student % wise Distribution



Sr No	Assessment Title	Type	Total Marks	Avg Marks	Threshold in %	No of Students Scoring										Total Students Above Threshold
						0-10%	11-20%	21-30%	31-40%	41-50%	51-60%	61-70%	71-80%	81-90%	91-100%	
1	Unit 1	F	5	2.87	50	4	0	0	0	8	17	20	0	0	0	45
2	Unit 2	F	5	3.05	50	4	0	0	0	1	15	28	1	0	0	45
3	Unit 3	F	10	5.81	50	4	0	0	3	11	14	7	6	3	1	42
4	External Exam	S	30	16.57	50	2	0	0	3	5	20	8	3	1	0	35

CO Indirect Attainment

Course Exit Survey - BSW - SEM 2

Q1	Were you able to identify key concepts of news media, including news values, reporting beats, and news writing structures?
Scale	Strongly Agree <input type="radio"/> Agree <input type="radio"/> Disagree <input type="radio"/>
Q2	Were you able to explain the fundamentals of photography, including framing, lighting, and camera types?
Scale	Strongly Agree <input type="radio"/> Agree <input type="radio"/> Disagree <input type="radio"/>
Q3	Were you able to demonstrate documentary filmmaking skills, including pre-production planning, interviewing, and editing?
Scale	Strongly Agree <input type="radio"/> Agree <input type="radio"/> Disagree <input type="radio"/>
Q4	Were you able to critically assess media's social, political, and cultural impact through participant observation and media analysis?
Scale	Strongly Agree <input type="radio"/> Agree <input type="radio"/> Disagree <input type="radio"/>

CO Attainment

CO	Direct Attainment	Indirect Attainment	Final Attainment	Target	Gap	Justification
CO1	1.79	1	1.63	1.25	0.37	-
CO2	1.79	1	1.63	1.12	0.5	-
CO3	3	1	2.6	2.12	0.48	-
CO4	1.79	1	1.63	2.37	-0.74	-

Average CO Attainment : 1.87

PO Direct Attainment

Weighted Average Matrix

POs	PO1	PO2	PO3	PO4	PO5	PO6	PO7	PO8
Weighted Avg	2	2	1.5	1.5	1.5	1.75	2	1.5

Average CO Attainment : 1.87

POs	PO1	PO2	PO3	PO4	PO5	PO6	PO7	PO8
Calculation	2 (1.87)/ 3	2 (1.87)/ 3	1.5 (1.87)/ 3	1.5 (1.87)/ 3	1.5 (1.87)/ 3	1.75 (1.87)/ 3	2 (1.87)/ 3	1.5 (1.87)/ 3
Direct Attainment	1.25	1.25	0.94	0.94	0.94	1.09	1.25	0.94

COURSE OVERVIEW | BSW



Field Work- II

Course Overview

Program Outcomes

- | | |
|------------|---|
| PO1 | Graduates will critically analyze social realities, understand their changing dynamics, and actively engage in processes that contribute to positive social transformation. |
| PO2 | They will demonstrate an in-depth understanding of diverse communities, their unique challenges, and systemic inequalities, and advocate for social justice in their professional practice. |
| PO3 | Graduates will apply appropriate social work methods and strategies to effectively work with individuals, groups, and communities, addressing various social issues. |
| PO4 | They will embody professional social work values and ethics, ensuring integrity, respect, and accountability in all aspects of their practice. |
| PO5 | Graduates will develop problem-solving abilities and intervention strategies tailored to the needs of marginalized and vulnerable populations. |
| PO6 | They will integrate research and evidence-based knowledge to design, implement, and evaluate social work interventions effectively. |
| PO7 | Graduates will exhibit strong communication skills and the ability to collaborate with multidisciplinary teams to address social challenges holistically. |
| PO8 | They will demonstrate a commitment to lifelong learning, staying informed about emerging trends and practices in the field of social work. |

Course Outcomes

- | | |
|------------|--|
| CO1 | To Remember Identify roles and responsibilities within a team in a social work setting. |
| CO2 | To Understand Explain the process of mobilizing resources for organizational activities. |
| CO3 | To Apply Demonstrate skills in documentation, administration, and program organization. |
| CO4 | To Analyze Reflect on fieldwork experiences to enhance professional self-awareness. |

CO-PO Mapping

courseOutcomes	PO1	PO2	PO3	PO4	PO5	PO6	PO7	PO8	Average
CO104.1	2	2	2	2	1	1	3	2	1.87
CO104.2	2	2	2	2	2	1	2	2	1.87
CO104.3	2	2	3	2	3	2	2	2	2.25
CO104.4	3	2	2	3	2	2	2	3	2.37
Average	2.25	2	2.25	2.25	2	1.5	2.25	2.25	-

CO Attainment Weightages

Direct Attainment	Indirect Attainment
80 %	20 %

CO Assessment Weightages

Formative (CIE)	Summative (SEE)
40 %	60 %

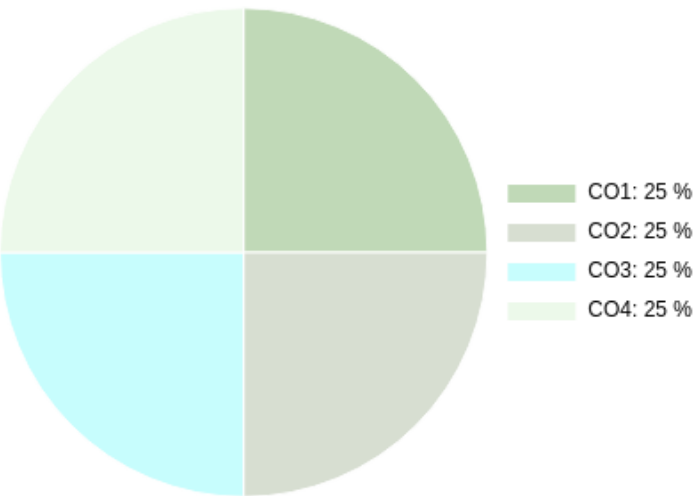
CO targets & Attainment Levels

CO	Target	Direct Attainment levels			Indirect Attainment levels		
		Level 1	Level 2	Level 3	Level 1	Level 2	Level 3
CO1	1.87	0 - 40	41 - 50	51 - 100	0 - 40	41 - 50	51 - 100
CO2	1.87	0 - 40	41 - 50	51 - 100	0 - 40	41 - 50	51 - 100
CO3	2.25	0 - 40	41 - 50	51 - 100	0 - 40	41 - 50	51 - 100
CO4	2.37	0 - 40	41 - 50	51 - 100	0 - 40	41 - 50	51 - 100

Exam Results

Exam Name	Threshold
External Exam	50%
Analytical Ability(Field Work)	50%
Skills(Field Work)	50%
Professional Development	50%
Use of Field Instruction(Field Work)	50%

CO Coverage



COs	CO1	CO2	CO3	CO4
100	25.0	25.0	25.0	25.0
%	25.0	25.0	25.0	25.0

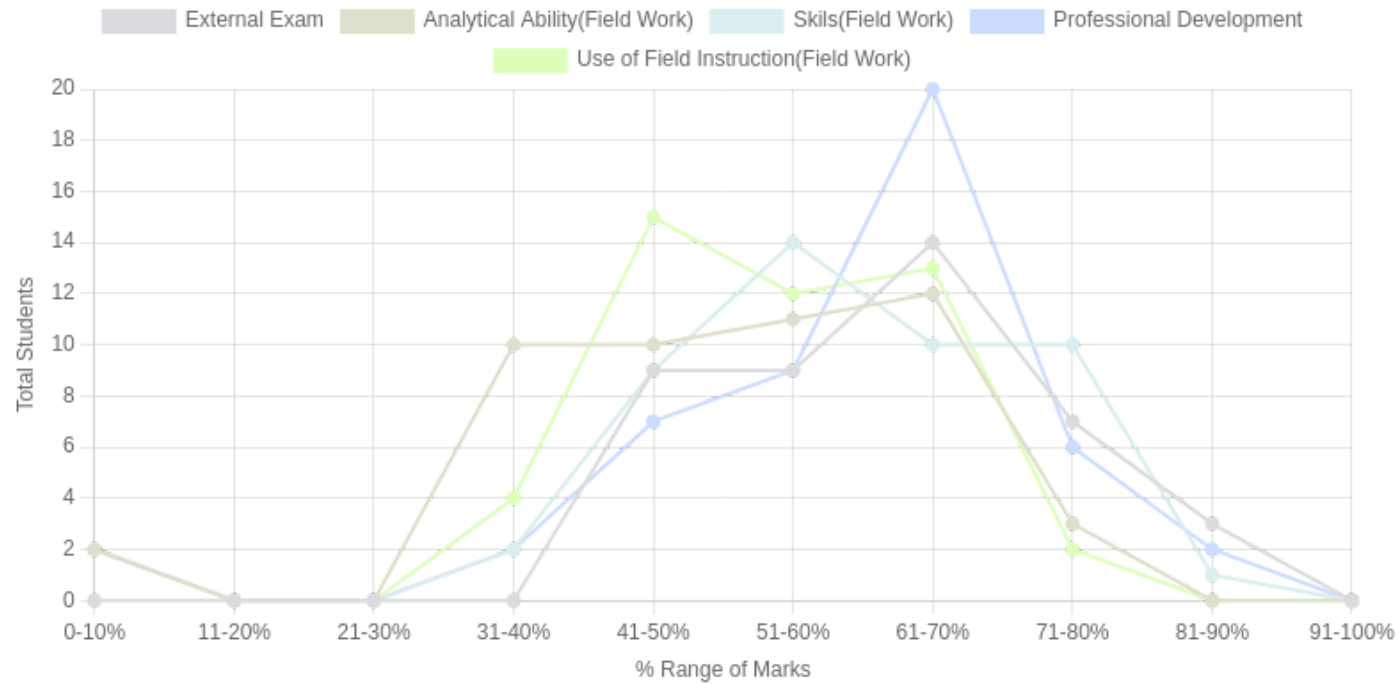
Formative (CIE) Assessments

Sr No	Exam Name	Total Marks	Threshold in %	CO1	CO2	CO3	CO4	CO5	CO6	Avg Attainment
2	Analytical Ability(Field Work)	10	50	3	3	3	3	-	-	3
3	Skills(Field Work)	10	50	3	3	3	3	-	-	3
4	Professional Development	30	50	3	3	3	3	-	-	3
5	Use of Field Instruction(Field Work)	10	50	3	3	3	3	-	-	3

Summative (SEE) Assessments

Sr No	Exam Name	Total Marks	Threshold in %	CO1	CO2	CO3	CO4	CO5	CO6	Avg Attainment
1	External Exam	40	50	3	3	3	3	-	-	3

Student % wise Distribution



Sr No	Assessment Title	Type	Total Marks	Avg Marks	Threshold in %	No of Students Scoring										Total Students Above Threshold
						0-10%	11-20%	21-30%	31-40%	41-50%	51-60%	61-70%	71-80%	81-90%	91-100%	
1	External Exam	S	40	25.11	50	0	0	0	0	9	9	14	7	3	0	36
2	Analytical Ability(Field Work)	F	10	5.5	50	2	0	0	10	10	11	12	3	0	0	36
3	Skills(Field Work)	F	10	6.16	50	2	0	0	2	9	14	10	10	1	0	44
4	Professional Development	F	30	17.83	50	2	0	0	2	7	9	20	6	2	0	41
5	Use of Field Instruction(Field Work)	F	10	5.62	50	2	0	0	4	15	12	13	2	0	0	42

CO Indirect Attainment

Course Exit Survey - BSW - SEM 2

Q1	Were you able to identify roles and responsibilities within a team in a social work setting?
Scale	Strongly Agree <input type="radio"/> Agree <input type="radio"/> Disagree <input type="radio"/>
Q2	Were you able to explain the process of mobilizing resources for organizational activities?
Scale	Strongly Agree <input type="radio"/> Agree <input type="radio"/> Disagree <input type="radio"/>
Q3	Were you able to demonstrate skills in documentation, administration, and program organization?
Scale	Strongly Agree <input type="radio"/> Agree <input type="radio"/> Disagree <input type="radio"/>
Q4	Were you able to reflect on fieldwork experiences to enhance professional self-awareness?
Scale	Strongly Agree <input type="radio"/> Agree <input type="radio"/> Disagree <input type="radio"/>

CO Attainment

CO	Direct Attainment	Indirect Attainment	Final Attainment	Target	Gap	Justification
CO1	3	1	2.6	1.87	0.73	-
CO2	3	1	2.6	1.87	0.73	-
CO3	3	1	2.6	2.25	0.35	-
CO4	3	1	2.6	2.37	0.23	-

Average CO Attainment : 2.6

PO Direct Attainment

Weighted Average Matrix

POs	PO1	PO2	PO3	PO4	PO5	PO6	PO7	PO8
Weighted Avg	2.25	2	2.25	2.25	2	1.5	2.25	2.25

Average CO Attainment : 2.6

POs	PO1	PO2	PO3	PO4	PO5	PO6	PO7	PO8
Calculation	2.25 (2.6)/ 3	2 (2.6)/ 3	2.25 (2.6)/ 3	2.25 (2.6)/ 3	2 (2.6)/ 3	1.5 (2.6)/ 3	2.25 (2.6)/ 3	2.25 (2.6)/ 3
Direct Attainment	1.95	1.73	1.95	1.95	1.73	1.30	1.95	1.95

COURSE OVERVIEW | BSW