



Women's Studies

Course Overview

Program Outcomes

PO1

Graduates will develop a critical and interdisciplinary understanding of social structures, inequalities, and systemic challenges, enabling them to design and implement effective social work interventions.

PO2

They will apply advanced social work theories, frameworks, and evidence-based practices to engage with individuals, families, groups, and communities at micro, meso, and macro levels.

PO3

Graduates will demonstrate professional competencies in clinical social work, community organization, policy advocacy, and participatory development, addressing diverse social issues.

PO4

They will uphold ethical principles, social justice, and human rights in their professional practice, ensuring dignity, inclusivity, and accountability in all interventions.

PO5

Graduates will integrate research methodologies, policy analysis, and program evaluation to enhance the effectiveness of social work interventions and contribute to knowledge production in the field.

PO6

They will critically assess and influence social policies, welfare programs, and governance structures to advocate for legislative reforms and rights-based approaches for marginalized communities.

PO7

Graduates will develop leadership, entrepreneurial, and management skills to design, implement, and sustain social initiatives, working collaboratively with multidisciplinary teams and stakeholders.

Course Outcomes

- | | |
|-----|--|
| CO1 | To Remember key concepts such as sex, gender identity, patriarchy, and intersectionality, and their role in shaping gender discrimination and bias. |
| CO2 | To Analyze examine the impact of socio-economic, legal, and cultural structures on gender-based violence and discrimination. |
| CO3 | To apply feminist theories and frameworks to assess the role of women's movements and policy initiatives in promoting gender equity. |
| CO4 | To Evaluate the effectiveness of global and national interventions, legal frameworks, and feminist strategies in addressing gender-based violence and promoting women's empowerment. |

CO-PO Mapping

courseOutcomes	PO1	PO2	PO3	PO4	PO5	PO6	PO7	Average
CODSE 406.1	3	1	2	1	1	1	1	1.42
CODSE 406.2	3	2	3	2	2	2	2	2.28
CODSE 406.3	3	3	3	2	3	3	3	2.85
CODSE 406.4	3	3	3	3	3	3	3	3
Average	3	2.25	2.75	2	2.25	2.25	2.25	-

CO Attainment Weightages

Direct Attainment	Indirect Attainment
80 %	20 %

CO Assessment Weightages

Formative (CIE)	Summative (SEE)
40 %	60 %

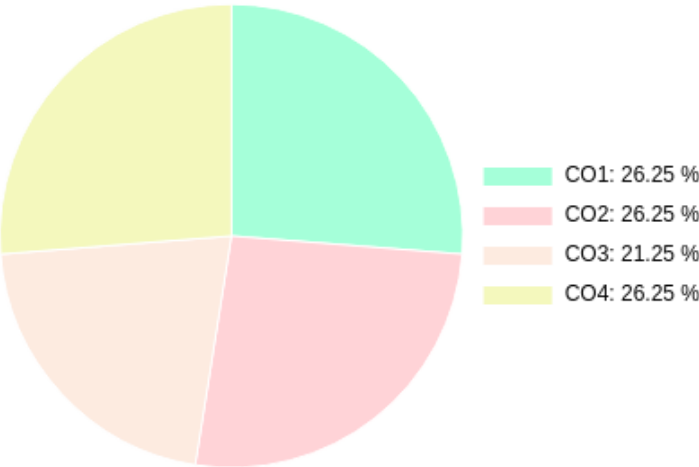
CO targets & Attainment Levels

CO	Target	Direct Attainment levels			Indirect Attainment levels		
		Level 1	Level 2	Level 3	Level 1	Level 2	Level 3
CO1	1.42	0 - 40	41 - 50	51 - 100	0 - 40	41 - 50	51 - 100
CO2	2.28	0 - 40	41 - 50	51 - 100	0 - 40	41 - 50	51 - 100
CO3	2.85	0 - 40	41 - 50	51 - 100	0 - 40	41 - 50	51 - 100
CO4	3	0 - 40	41 - 50	51 - 100	0 - 40	41 - 50	51 - 100

Exam Results

Exam Name	Threshold
Unit 1	50%
Unit 2	50%
Unit 4	50%
Unit 3	50%
External Exam	50%

CO Coverage



COs	CO1	CO2	CO3	CO4
100	26.3	26.3	26.3	21.3
%	26.3	26.3	26.3	21.3

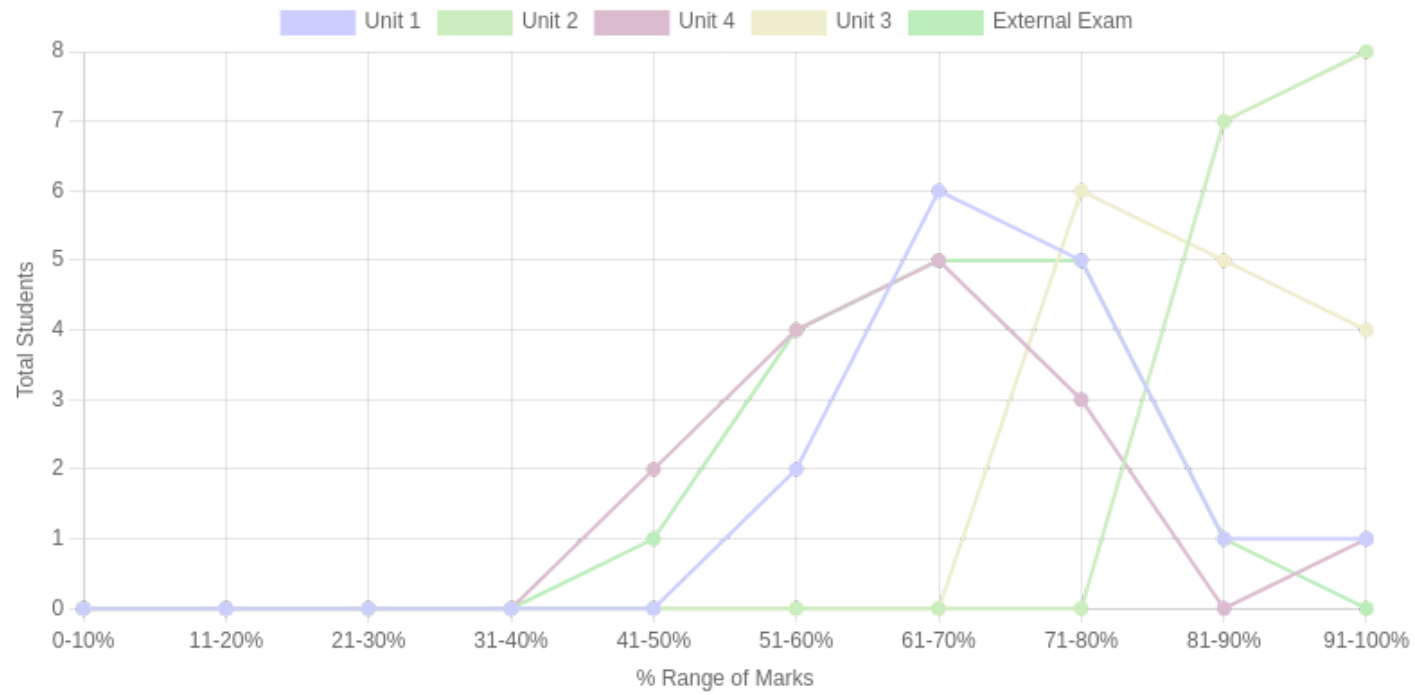
Formative (CIE) Assessments

Sr No	Exam Name	Total Marks	Threshold in %	CO1	CO2	CO3	CO4	CO5	CO6	Avg Attainment
1	Unit 1	10	50	3	3	3	3	-	-	3
2	Unit 2	16	50	3	3	3	3	-	-	3
3	Unit 4	9	50	3	3	3	3	-	-	3
4	Unit 3	15	50	3	3	3	-	-	-	3

Summative (SEE) Assessments

Sr No	Exam Name	Total Marks	Threshold in %	CO1	CO2	CO3	CO4	CO5	CO6	Avg Attainment
5	External Exam	50	50	3	3	3	3	-	-	3

Student % wise Distribution



Sr No	Assessment Title	Type	Total Marks	Avg Marks	Threshold in %	No of Students Scoring										Total Students Above Threshold
						0-10%	11-20%	21-30%	31-40%	41-50%	51-60%	61-70%	71-80%	81-90%	91-100%	
1	Unit 1	F	10	7.3	50	0	0	0	0	0	2	6	5	1	1	15
2	Unit 2	F	16	14.6	50	0	0	0	0	0	0	0	0	7	8	15
3	Unit 4	F	9	5.7	50	0	0	0	0	2	4	5	3	0	1	14
4	Unit 3	F	15	12.76	50	0	0	0	0	0	0	0	6	5	4	15
5	External Exam	S	50	33.56	50	0	0	0	0	1	4	5	5	1	0	15

CO Indirect Attainment

Course Exit Feedback MSW Sem 2

Q1	Were you able to remember key concepts such as sex, gender identity, patriarchy, and intersectionality, and their role in shaping gender discrimination and bias?
Scale	Strongly Agree <input type="radio"/> Agree <input type="radio"/> Disagree <input type="radio"/>
Q2	Were you able to analyze the impact of socio-economic, legal, and cultural structures on gender-based violence and discrimination?
Scale	Strongly Agree <input type="radio"/> Agree <input type="radio"/> Disagree <input type="radio"/>
Q3	Were you able to apply feminist theories and frameworks to assess the role of women's movements and policy initiatives in promoting gender equity?
Scale	Strongly Agree <input type="radio"/> Agree <input type="radio"/> Disagree <input type="radio"/>
Q4	Were you able to evaluate the effectiveness of global and national interventions, legal frameworks, and feminist strategies in addressing gender-based violence and promoting women's empowerment?
Scale	Strongly Agree <input type="radio"/> Agree <input type="radio"/> Disagree <input type="radio"/>

CO Attainment

CO	Direct Attainment	Indirect Attainment	Final Attainment	Target	Gap	Justification
CO1	3	3	3	1.42	1.58	-
CO2	3	3	3	2.28	0.72	-
CO3	3	3	3	2.85	0.14	-
CO4	3	3	3	3	-	-

Average CO Attainment : 3

PO Direct Attainment

Weighted Average Matrix

POs	PO1	PO2	PO3	PO4	PO5	PO6	PO7
Weighted Avg	3	2.25	2.75	2	2.25	2.25	2.25

Average CO Attainment : 3

POs	PO1	PO2	PO3	PO4	PO5	PO6	PO7
Calculation	3 (3)/ 3	2.25 (3)/ 3	2.75 (3)/ 3	2 (3)/ 3	2.25 (3)/ 3	2.25 (3)/ 3	2.25 (3)/ 3
Direct Attainment	3.00	2.25	2.75	2.00	2.25	2.25	2.25

COURSE OVERVIEW | MSW



Disability Studies

Course Overview

Program Outcomes

- | | |
|-----|---|
| PO1 | Graduates will develop a critical and interdisciplinary understanding of social structures, inequalities, and systemic challenges, enabling them to design and implement effective social work interventions. |
| PO2 | They will apply advanced social work theories, frameworks, and evidence-based practices to engage with individuals, families, groups, and communities at micro, meso, and macro levels. |
| PO3 | Graduates will demonstrate professional competencies in clinical social work, community organization, policy advocacy, and participatory development, addressing diverse social issues. |
| PO4 | They will uphold ethical principles, social justice, and human rights in their professional practice, ensuring dignity, inclusivity, and accountability in all interventions. |
| PO5 | Graduates will integrate research methodologies, policy analysis, and program evaluation to enhance the effectiveness of social work interventions and contribute to knowledge production in the field. |
| PO6 | They will critically assess and influence social policies, welfare programs, and governance structures to advocate for legislative reforms and rights-based approaches for marginalized communities. |
| PO7 | Graduates will develop leadership, entrepreneurial, and management skills to design, implement, and sustain social initiatives, working collaboratively with multidisciplinary teams and stakeholders. |

Course Outcomes

- | | |
|------------|--|
| CO1 | To Understand the perspectives, types, causes, and preventive measures of disabilities within a rights-based framework. |
| CO2 | To Apply social work principles to assess the impact of disability on individuals and families, developing appropriate intervention strategies. |
| CO3 | To Analyze national and international disability laws, policies, and schemes to evaluate their effectiveness in promoting inclusion and empowerment. |
| CO4 | To Create advocacy and rehabilitation plans for persons with disabilities, integrating community-based and policy-driven approaches. |

CO-PO Mapping

courseOutcomes	PO1	PO2	PO3	PO4	PO5	PO6	PO7	Average
CODIST 4.5.1	3	1	3	2	2	2	3	2.28
CODIST 4.5.2	3	2	3	2	3	3	3	2.71
CODIST 4.5.3	3	1	3	3	2	3	3	2.57
CODIST 4.5.4	3	2	3	3	3	3	3	2.85
Average	3	1.5	3	2.5	2.5	2.75	3	-

CO Attainment Weightages

Direct Attainment	Indirect Attainment
80 %	20 %

CO Assessment Weightages

Formative (CIE)	Summative (SEE)
40 %	60 %

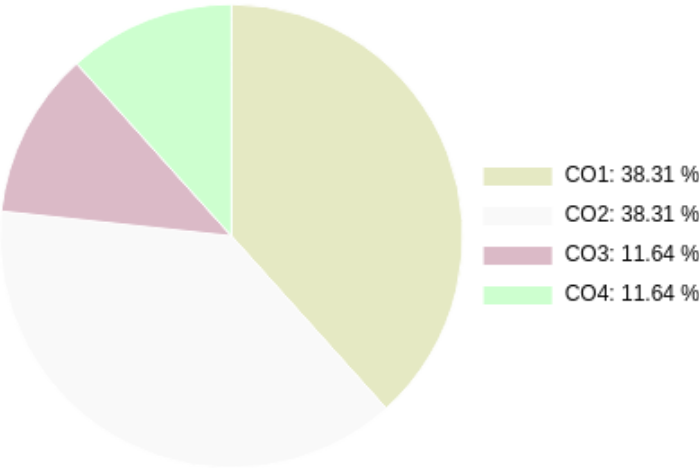
CO targets & Attainment Levels

CO	Target	Direct Attainment levels			Indirect Attainment levels		
		Level 1	Level 2	Level 3	Level 1	Level 2	Level 3
CO1	2.28	0 - 40	41 - 50	51 - 100	0 - 40	41 - 50	51 - 100
CO2	2.71	0 - 40	41 - 50	51 - 100	0 - 40	41 - 50	51 - 100
CO3	2.57	0 - 40	41 - 50	51 - 100	0 - 40	41 - 50	51 - 100
CO4	2.85	0 - 40	41 - 50	51 - 100	0 - 40	41 - 50	51 - 100

Exam Results

Exam Name	Threshold
Unit 1	50%
Unit 2	50%
Unit 3	50%
Unit 4	50%
End Sem	50%

CO Coverage



COs	CO1	CO2	CO3	CO4
45	17.2	17.2	5.2	5.2
%	38.3	38.3	11.6	11.6

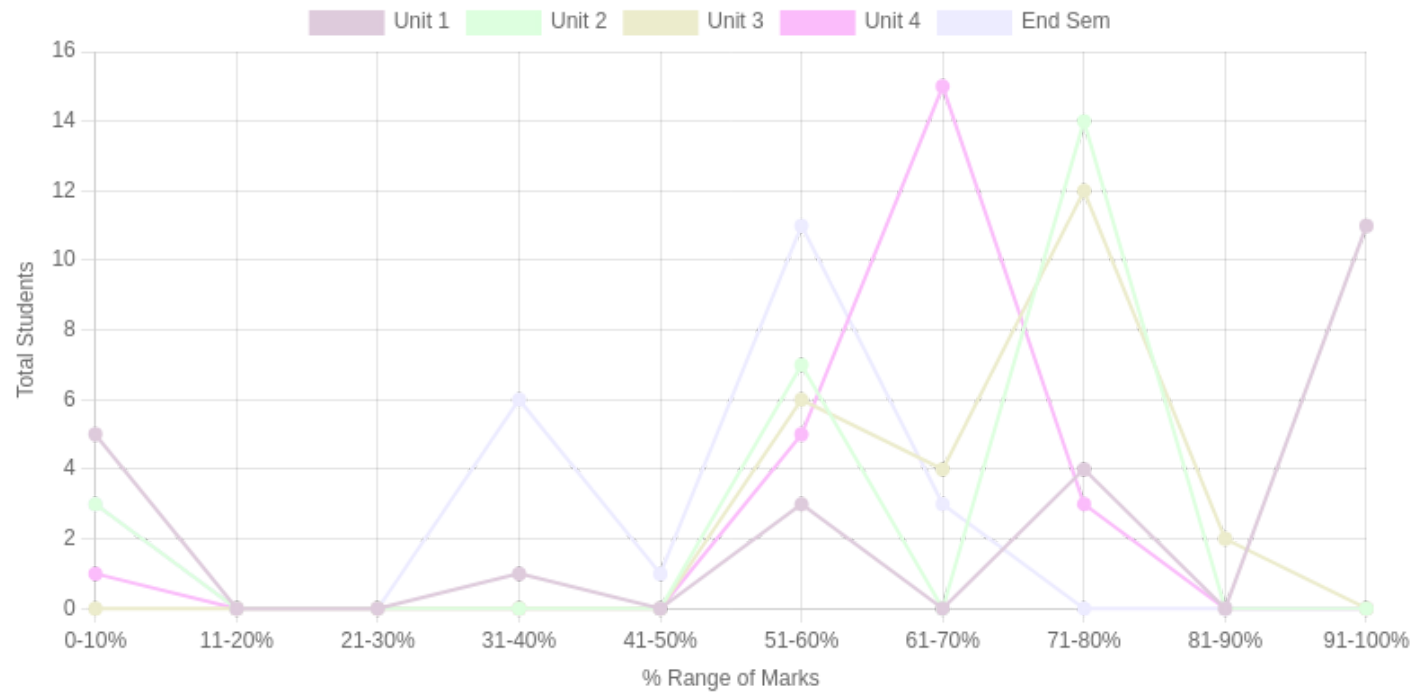
Formative (CIE) Assessments

Sr No	Exam Name	Total Marks	Threshold in %	CO1	CO2	CO3	CO4	CO5	CO6	Avg Attainment
1	Unit 1	2.5	50	3	3	3	3	-	-	3
2	Unit 2	2.5	50	3	3	3	3	-	-	3
3	Unit 3	5	50	3	3	3	3	-	-	3
4	Unit 4	5	50	3	3	3	3	-	-	3

Summative (SEE) Assessments

Sr No	Exam Name	Total Marks	Threshold in %	CO1	CO2	CO3	CO4	CO5	CO6	Avg Attainment
5	End Sem	30	50	3	3	3	3	-	-	3

Student % wise Distribution



Sr No	Assessment Title	Type	Total Marks	Avg Marks	Threshold in %	No of Students Scoring										Total Students Above Threshold
						0-10%	11-20%	21-30%	31-40%	41-50%	51-60%	61-70%	71-80%	81-90%	91-100%	
1	Unit 1	F	2.5	1.7	50	5	0	0	1	0	3	0	4	0	11	18
2	Unit 2	F	2.5	1.6	50	3	0	0	0	0	7	0	14	0	0	21
3	Unit 3	F	5	3.7	50	0	0	0	0	0	6	4	12	2	0	24
4	Unit 4	F	5	3.31	50	1	0	0	0	0	5	15	3	0	0	23
5	End Sem	S	30	13.43	50	3	0	0	6	1	11	3	0	0	0	14

CO Indirect Attainment

Course Exit Feedback Form MSW Sem 4

Q1	Were you able to understand the perspectives, types, causes, and preventive measures of disabilities within a rights-based framework?
Scale	Strongly Agree <input type="radio"/> Agree <input type="radio"/> Disagree <input type="radio"/>
Q2	Were you able to apply social work principles to assess the impact of disability on individuals and families, developing appropriate intervention strategies?
Scale	Strongly Agree <input type="radio"/> Agree <input type="radio"/> Disagree <input type="radio"/>
Q3	Were you able to analyze national and international disability laws, policies, and schemes to evaluate their effectiveness in promoting inclusion and empowerment?
Scale	Strongly Agree <input type="radio"/> Agree <input type="radio"/> Disagree <input type="radio"/>
Q4	Were you able to create advocacy and rehabilitation plans for persons with disabilities, integrating community-based and policy-driven approaches?
Scale	Strongly Agree <input type="radio"/> Agree <input type="radio"/> Disagree <input type="radio"/>

CO Attainment

CO	Direct Attainment	Indirect Attainment	Final Attainment	Target	Gap	Justification
CO1	3	3	3	2.28	0.72	-
CO2	3	3	3	2.71	0.29	-
CO3	3	3	3	2.57	0.43	-
CO4	3	3	3	2.85	0.14	-

Average CO Attainment : 3

PO Direct Attainment

Weighted Average Matrix

POs	PO1	PO2	PO3	PO4	PO5	PO6	PO7
Weighted Avg	3	1.5	3	2.5	2.5	2.75	3

Average CO Attainment : 3

POs	PO1	PO2	PO3	PO4	PO5	PO6	PO7
Calculation	3 (3)/ 3	1.5 (3)/ 3	3 (3)/ 3	2.5 (3)/ 3	2.5 (3)/ 3	2.75 (3)/ 3	3 (3)/ 3
Direct Attainment	3.00	1.50	3.00	2.50	2.50	2.75	3.00

COURSE OVERVIEW | MSW



Education and Development

Course Overview

Program Outcomes

PO1

Graduates will develop a critical and interdisciplinary understanding of social structures, inequalities, and systemic challenges, enabling them to design and implement effective social work interventions.

PO2

They will apply advanced social work theories, frameworks, and evidence-based practices to engage with individuals, families, groups, and communities at micro, meso, and macro levels.

PO3

Graduates will demonstrate professional competencies in clinical social work, community organization, policy advocacy, and participatory development, addressing diverse social issues.

PO4

They will uphold ethical principles, social justice, and human rights in their professional practice, ensuring dignity, inclusivity, and accountability in all interventions.

PO5

Graduates will integrate research methodologies, policy analysis, and program evaluation to enhance the effectiveness of social work interventions and contribute to knowledge production in the field.

PO6

They will critically assess and influence social policies, welfare programs, and governance structures to advocate for legislative reforms and rights-based approaches for marginalized communities.

PO7

Graduates will develop leadership, entrepreneurial, and management skills to design, implement, and sustain social initiatives, working collaboratively with multidisciplinary teams and stakeholders.

Course Outcomes

- | | |
|-----|--|
| CO1 | To Understand the role of education in fostering empowerment, social equity, and sustainable development, applying social work principles to community progress. |
| CO2 | To Apply critical thinking to evaluate challenges and opportunities in achieving universal education, particularly for marginalized groups, through policy and grassroots initiatives. |
| CO3 | To Analyze the evolution of educational policies and pedagogical strategies in relation to learner needs, teacher roles, and assessment methods in diverse social contexts. |
| CO4 | To Evaluate and design innovative, evidence-based teaching approaches and interventions to enhance educational access, quality, and inclusivity for diverse populations. |

CO-PO Mapping

courseOutcomes	PO1	PO2	PO3	PO4	PO5	PO6	PO7	Average
COEDDE 4.9.1	3	2	3	2	3	2	3	2.57
COEDDE 4.9.2	3	3	3	3	2	3	3	2.85
COEDDE 4.9.3	3	2	3	3	2	3	3	2.71
COEDDE 4.9.4	3	2	3	3	3	3	3	2.85
Average	3	2.25	3	2.75	2.5	2.75	3	-

CO Attainment Weightages

Direct Attainment	Indirect Attainment
80 %	20 %

CO Assessment Weightages

Formative (CIE)	Summative (SEE)
40 %	60 %

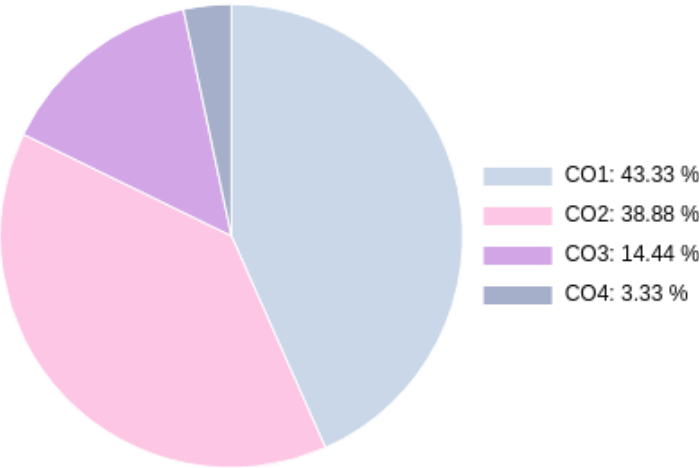
CO targets & Attainment Levels

CO	Target	Direct Attainment levels			Indirect Attainment levels		
		Level 1	Level 2	Level 3	Level 1	Level 2	Level 3
CO1	2.57	0 - 40	41 - 50	51 - 100	0 - 40	41 - 50	51 - 100
CO2	2.85	0 - 40	41 - 50	51 - 100	0 - 40	41 - 50	51 - 100
CO3	2.71	0 - 40	41 - 50	51 - 100	0 - 40	41 - 50	51 - 100
CO4	2.85	0 - 40	41 - 50	51 - 100	0 - 40	41 - 50	51 - 100

Exam Results

Exam Name	Threshold
Unit 1	50%
Unit 2	50%
Unit 3	50%
Unit 4	50%
End Sem	50%

CO Coverage



COs	CO1	CO2	CO3	CO4
45	19.5	17.5	6.5	1.5
%	43.3	38.9	14.4	3.3

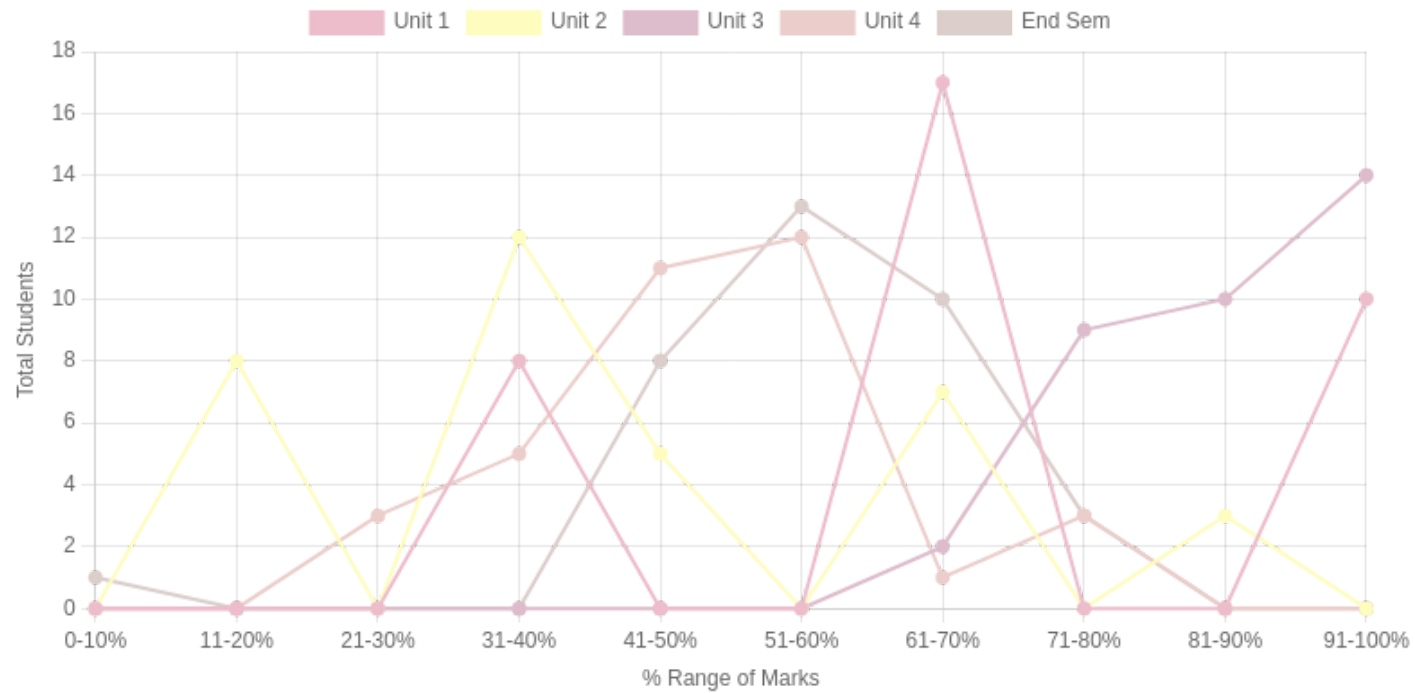
Formative (CIE) Assessments

Sr No	Exam Name	Total Marks	Threshold in %	CO1	CO2	CO3	CO4	CO5	CO6	Avg Attainment
1	Unit 1	3	50	3	-	-	-	-	-	3
2	Unit 2	3	50	2	-	-	-	-	-	2
3	Unit 3	4	50	-	3	-	-	-	-	3
4	Unit 4	5	50	-	-	3	-	-	-	3

Summative (SEE) Assessments

Sr No	Exam Name	Total Marks	Threshold in %	CO1	CO2	CO3	CO4	CO5	CO6	Avg Attainment
5	End Sem	30	50	3	3	3	3	-	-	3

Student % wise Distribution



Sr No	Assessment Title	Type	Total Marks	Avg Marks	Threshold in %	No of Students Scoring										Total Students Above Threshold
						0-10%	11-20%	21-30%	31-40%	41-50%	51-60%	61-70%	71-80%	81-90%	91-100%	
1	Unit 1	F	3	2.05	50	0	0	0	8	0	0	17	0	0	10	27
2	Unit 2	F	3	1.28	50	0	8	0	12	5	0	7	0	3	0	15
3	Unit 3	F	4	3.51	50	0	0	0	0	0	0	2	9	10	14	35
4	Unit 4	F	5	2.67	50	0	0	3	5	11	12	1	3	0	0	27
5	End Sem	S	30	17.08	50	1	0	0	0	8	13	10	3	0	0	30

CO Indirect Attainment

Course Exit Feedback Form MSW Sem 4

Q1	Were you able to understand the role of education in fostering empowerment, social equity, and sustainable development, applying social work principles to community progress?
Scale	Strongly Agree <input type="radio"/> Agree <input type="radio"/> Disagree <input type="radio"/>
Q2	Were you able to apply critical thinking to evaluate challenges and opportunities in achieving universal education, particularly for marginalized groups, through policy and grassroots initiatives?
Scale	Strongly Agree <input type="radio"/> Agree <input type="radio"/> Disagree <input type="radio"/>
Q3	Were you able to analyze the evolution of educational policies and pedagogical strategies in relation to learner needs, teacher roles, and assessment methods in diverse social contexts?
Scale	Strongly Agree <input type="radio"/> Agree <input type="radio"/> Disagree <input type="radio"/>
Q4	Were you able to evaluate and design innovative, evidence-based teaching approaches and interventions to enhance educational access, quality, and inclusivity for diverse populations?
Scale	Strongly Agree <input type="radio"/> Agree <input type="radio"/> Disagree <input type="radio"/>

CO Attainment

CO	Direct Attainment	Indirect Attainment	Final Attainment	Target	Gap	Justification
CO1	2.8	2	2.63	2.57	0.06	-
CO2	3	2	2.8	2.85	-0.05	-
CO3	3	3	3	2.71	0.29	-
CO4	1.79	2	1.83	2.85	-1.02	-

Average CO Attainment : 2.56

PO Direct Attainment

Weighted Average Matrix

POs	PO1	PO2	PO3	PO4	PO5	PO6	PO7
Weighted Avg	3	2.25	3	2.75	2.5	2.75	3

Average CO Attainment : 2.56

POs	PO1	PO2	PO3	PO4	PO5	PO6	PO7
Calculation	3 (2.56)/ 3	2.25 (2.56)/ 3	3 (2.56)/ 3	2.75 (2.56)/ 3	2.5 (2.56)/ 3	2.75 (2.56)/ 3	3 (2.56)/ 3
Direct Attainment	2.56	1.92	2.56	2.35	2.13	2.35	2.56

COURSE OVERVIEW | MSW



Field Work Supervision

Course Overview

Program Outcomes

- | | |
|-----|---|
| PO1 | Graduates will develop a critical and interdisciplinary understanding of social structures, inequalities, and systemic challenges, enabling them to design and implement effective social work interventions. |
| PO2 | They will apply advanced social work theories, frameworks, and evidence-based practices to engage with individuals, families, groups, and communities at micro, meso, and macro levels. |
| PO3 | Graduates will demonstrate professional competencies in clinical social work, community organization, policy advocacy, and participatory development, addressing diverse social issues. |
| PO4 | They will uphold ethical principles, social justice, and human rights in their professional practice, ensuring dignity, inclusivity, and accountability in all interventions. |
| PO5 | Graduates will integrate research methodologies, policy analysis, and program evaluation to enhance the effectiveness of social work interventions and contribute to knowledge production in the field. |
| PO6 | They will critically assess and influence social policies, welfare programs, and governance structures to advocate for legislative reforms and rights-based approaches for marginalized communities. |
| PO7 | Graduates will develop leadership, entrepreneurial, and management skills to design, implement, and sustain social initiatives, working collaboratively with multidisciplinary teams and stakeholders. |

Course Outcomes

- | | |
|-----|---|
| CO1 | To Understand the principles, objectives, and ethical considerations of fieldwork supervision in social work education, including the mentor-mentee relationship. |
| CO2 | To Apply supervision techniques, mentoring skills, and leadership approaches to effectively guide social work students in fieldwork settings. |
| CO3 | To Analyze various fieldwork assessment methods, including summative and formative evaluation, to enhance the learning experience and professional development of students. |
| CO4 | To Evaluate fieldwork curriculum design by integrating theoretical perspectives with practice-based learning, ensuring progressive development in social work education. |

CO-PO Mapping

courseOutcomes	PO1	PO2	PO3	PO4	PO5	PO6	PO7	Average
COFWSU 4.8.1	3	2	3	2	2	2	3	2.42
COFWSU 4.8.2	3	3	3	2	3	3	3	2.85
COFWSU 4.8.3	3	2	3	3	3	3	3	2.85
COFWSU 4.8.4	3	2	3	3	3	3	3	2.85
Average	3	2.25	3	2.5	2.75	2.75	3	-

CO Attainment Weightages

Direct Attainment	Indirect Attainment
80 %	20 %

CO Assessment Weightages

Formative (CIE)	Summative (SEE)
40 %	60 %

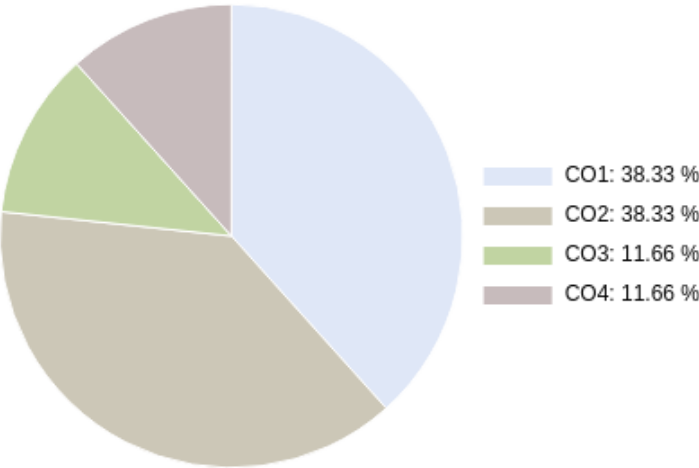
CO targets & Attainment Levels

CO	Target	Direct Attainment levels			Indirect Attainment levels		
		Level 1	Level 2	Level 3	Level 1	Level 2	Level 3
CO1	2.42	0 - 40	41 - 50	51 - 100	0 - 40	41 - 50	51 - 100
CO2	2.85	0 - 40	41 - 50	51 - 100	0 - 40	41 - 50	51 - 100
CO3	2.85	0 - 40	41 - 50	51 - 100	0 - 40	41 - 50	51 - 100
CO4	2.85	0 - 40	41 - 50	51 - 100	0 - 40	41 - 50	51 - 100

Exam Results

Exam Name	Threshold
Unit 1	50%
Unit 2	50%
Unit 3	50%
End Sem	50%

CO Coverage



COs	CO1	CO2	CO3	CO4
45	17.3	17.3	5.3	5.3
%	38.3	38.3	11.7	11.7

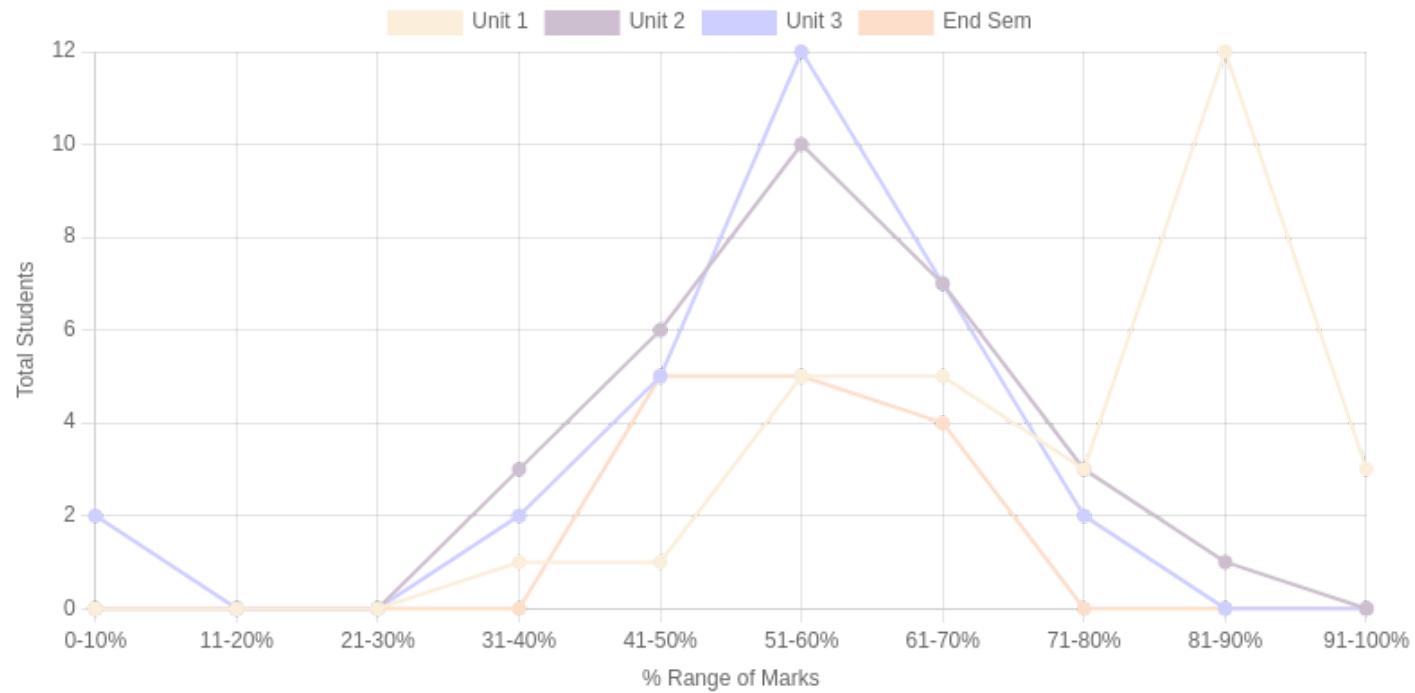
Formative (CIE) Assessments

Sr No	Exam Name	Total Marks	Threshold in %	CO1	CO2	CO3	CO4	CO5	CO6	Avg Attainment
1	Unit 1	5	50	3	3	3	3	-	-	3
2	Unit 2	5	50	3	3	3	3	-	-	3
3	Unit 3	5	50	3	3	3	3	-	-	3

Summative (SEE) Assessments

Sr No	Exam Name	Total Marks	Threshold in %	CO1	CO2	CO3	CO4	CO5	CO6	Avg Attainment
4	End Sem	30	50	2	3	3	3	-	-	2.75

Student % wise Distribution



Sr No	Assessment Title	Type	Total Marks	Avg Marks	Threshold in %	No of Students Scoring										Total Students Above Threshold
						0-10%	11-20%	21-30%	31-40%	41-50%	51-60%	61-70%	71-80%	81-90%	91-100%	
1	Unit 1	F	5	3.93	50	0	0	0	1	1	5	5	3	12	3	29
2	Unit 2	F	5	2.98	50	0	0	0	3	6	10	7	3	1	0	25
3	Unit 3	F	5	2.75	50	2	0	0	2	5	12	7	2	0	0	25
4	End Sem	S	30	16.71	50	0	0	0	0	5	5	4	0	0	0	11

CO Indirect Attainment

Course Exit Feedback Form MSW Sem 4

Q1	Were you able to understand the principles, objectives, and ethical considerations of fieldwork supervision in social work education, including the mentor-mentee relationship?
Scale	Strongly Agree <input type="radio"/> Agree <input type="radio"/> Disagree <input type="radio"/>
Q2	Were you able to apply supervision techniques, mentoring skills, and leadership approaches to effectively guide social work students in fieldwork settings?
Scale	Strongly Agree <input type="radio"/> Agree <input type="radio"/> Disagree <input type="radio"/>
Q3	Were you able to analyze various fieldwork assessment methods, including summative and formative evaluation, to enhance the learning experience and professional development of students?
Scale	Strongly Agree <input type="radio"/> Agree <input type="radio"/> Disagree <input type="radio"/>
Q4	Were you able to evaluate fieldwork curriculum design by integrating theoretical perspectives with practice-based learning, ensuring progressive development in social work education?
Scale	Strongly Agree <input type="radio"/> Agree <input type="radio"/> Disagree <input type="radio"/>

CO Attainment

CO	Direct Attainment	Indirect Attainment	Final Attainment	Target	Gap	Justification
CO1	2.4	2	2.31	2.42	-0.1	-
CO2	3	2	2.8	2.85	-0.05	-
CO3	3	3	3	2.85	0.14	-
CO4	3	3	3	2.85	0.14	-

Average CO Attainment : 2.77

PO Direct Attainment

Weighted Average Matrix

POs	PO1	PO2	PO3	PO4	PO5	PO6	PO7
Weighted Avg	3	2.25	3	2.5	2.75	2.75	3

Average CO Attainment : 2.77

POs	PO1	PO2	PO3	PO4	PO5	PO6	PO7
Calculation	3 (2.77)/ 3	2.25 (2.77)/ 3	3 (2.77)/ 3	2.5 (2.77)/ 3	2.75 (2.77)/ 3	2.75 (2.77)/ 3	3 (2.77)/ 3
Direct Attainment	2.77	2.08	2.77	2.31	2.54	2.54	2.77

COURSE OVERVIEW | MSW



Field Work

Course Overview

Program Outcomes

PO1

Graduates will develop a critical and interdisciplinary understanding of social structures, inequalities, and systemic challenges, enabling them to design and implement effective social work interventions.

PO2

They will apply advanced social work theories, frameworks, and evidence-based practices to engage with individuals, families, groups, and communities at micro, meso, and macro levels.

PO3

Graduates will demonstrate professional competencies in clinical social work, community organization, policy advocacy, and participatory development, addressing diverse social issues.

PO4

They will uphold ethical principles, social justice, and human rights in their professional practice, ensuring dignity, inclusivity, and accountability in all interventions.

PO5

Graduates will integrate research methodologies, policy analysis, and program evaluation to enhance the effectiveness of social work interventions and contribute to knowledge production in the field.

PO6

They will critically assess and influence social policies, welfare programs, and governance structures to advocate for legislative reforms and rights-based approaches for marginalized communities.

PO7

Graduates will develop leadership, entrepreneurial, and management skills to design, implement, and sustain social initiatives, working collaboratively with multidisciplinary teams and stakeholders.

Course Outcomes

- | | |
|-----|--|
| CO1 | To Understand the role of a professional social worker in team settings and the significance of resource mobilization for organizational sustainability. |
| CO2 | To Apply various communication media and program planning techniques to effectively engage with communities and stakeholders. |
| CO3 | To Analyze documentation and administrative processes to enhance organizational efficiency and fieldwork effectiveness. |
| CO4 | To Evaluate fieldwork experiences through reflective writing, identifying key learnings and areas for professional growth. |

CO-PO Mapping

courseOutcomes	PO1	PO2	PO3	PO4	PO5	PO6	PO7	Average
COMFW4 4.10.1	3	2	3	2	2	2	3	2.42
COMFW4 4.10.2	3	3	3	2	3	3	3	2.85
COMFW4 4.10.3	3	2	3	3	3	3	3	2.85
COMFW4 4.10.4	3	2	3	3	3	3	3	2.85
Average	3	2.25	3	2.5	2.75	2.75	3	-

CO Attainment Weightages

Direct Attainment	Indirect Attainment
80 %	20 %

CO Assessment Weightages

Formative (CIE)	Summative (SEE)
40 %	60 %

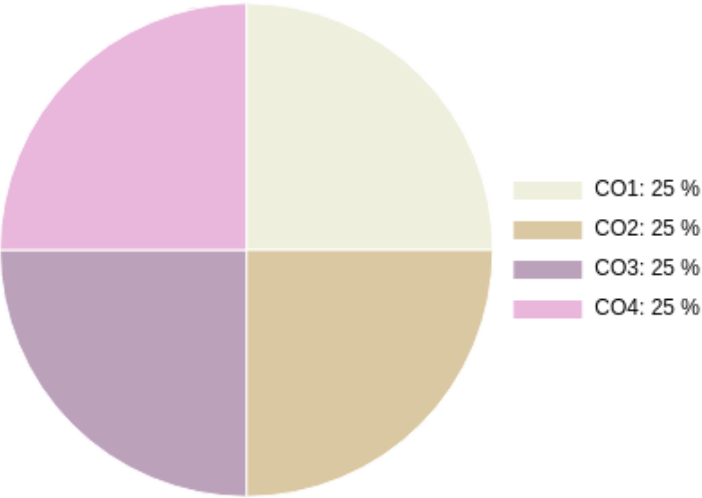
CO targets & Attainment Levels

CO	Target	Direct Attainment levels			Indirect Attainment levels		
		Level 1	Level 2	Level 3	Level 1	Level 2	Level 3
CO1	2.42	0 - 40	41 - 50	51 - 100	0 - 40	41 - 50	51 - 100
CO2	2.85	0 - 40	41 - 50	51 - 100	0 - 40	41 - 50	51 - 100
CO3	2.85	0 - 40	41 - 50	51 - 100	0 - 40	41 - 50	51 - 100
CO4	2.85	0 - 40	41 - 50	51 - 100	0 - 40	41 - 50	51 - 100

Exam Results

Exam Name	Threshold
Internal Exam	50%
End Sem	50%

CO Coverage



COs	CO1	CO2	CO3	CO4
100	25.0	25.0	25.0	25.0
%	25.0	25.0	25.0	25.0

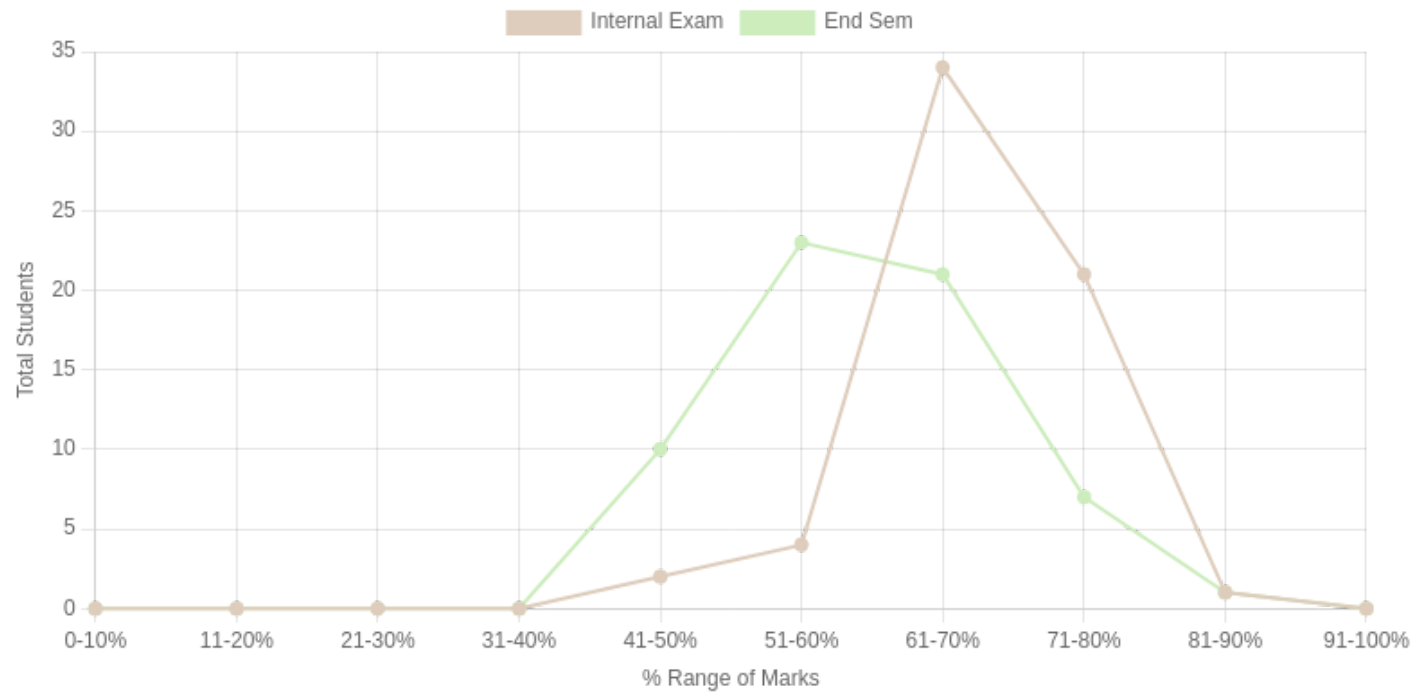
Formative (CIE) Assessments

Sr No	Exam Name	Total Marks	Threshold in %	CO1	CO2	CO3	CO4	CO5	CO6	Avg Attainment
1	Internal Exam	60	50	3	3	3	3	-	-	3

Summative (SEE) Assessments

Sr No	Exam Name	Total Marks	Threshold in %	CO1	CO2	CO3	CO4	CO5	CO6	Avg Attainment
2	End Sem	40	50	3	3	3	3	-	-	3

Student % wise Distribution



Sr No	Assessment Title	Type	Total Marks	Avg Marks	Threshold in %	No of Students Scoring										Total Students Above Threshold
						0-10%	11-20%	21-30%	31-40%	41-50%	51-60%	61-70%	71-80%	81-90%	91-100%	
1	Internal Exam	F	60	40.91	50	0	0	0	0	2	4	34	21	1	0	61
2	End Sem	S	40	24.08	50	0	0	0	0	10	23	21	7	1	0	58

CO Indirect Attainment

Course Exit Feedback Form MSW Sem 4

Q1	Were you able to understand the role of a professional social worker in team settings and the significance of resource mobilization for organizational sustainability?
Scale	Strongly Agree <input type="radio"/> Agree <input type="radio"/> Disagree <input type="radio"/>
Q2	Were you able to apply various communication media and program planning techniques to effectively engage with communities and stakeholders?
Scale	Strongly Agree <input type="radio"/> Agree <input type="radio"/> Disagree <input type="radio"/>
Q3	Were you able to analyze documentation and administrative processes to enhance organizational efficiency and fieldwork effectiveness?
Scale	Strongly Agree <input type="radio"/> Agree <input type="radio"/> Disagree <input type="radio"/>
Q4	Were you able to evaluate fieldwork experiences through reflective writing, identifying key learnings and areas for professional growth?
Scale	Strongly Agree <input type="radio"/> Agree <input type="radio"/> Disagree <input type="radio"/>

CO Attainment

CO	Direct Attainment	Indirect Attainment	Final Attainment	Target	Gap	Justification
CO1	3	1	2.6	2.42	0.18	-

CO	Direct Attainment	Indirect Attainment	Final Attainment	Target	Gap	Justification
CO2	3	0	2.4	2.85	-0.45	-
CO3	3	1	2.6	2.85	-0.25	-
CO4	3	0	2.4	2.85	-0.45	-

Average CO Attainment : 2.5

PO Direct Attainment

Weighted Average Matrix

POs	PO1	PO2	PO3	PO4	PO5	PO6	PO7
Weighted Avg	3	2.25	3	2.5	2.75	2.75	3

Average CO Attainment : 2.5

POs	PO1	PO2	PO3	PO4	PO5	PO6	PO7
Calculation	3 (2.5)/ 3	2.25 (2.5)/ 3	3 (2.5)/ 3	2.5 (2.5)/ 3	2.75 (2.5)/ 3	2.75 (2.5)/ 3	3 (2.5)/ 3
Direct Attainment	2.50	1.88	2.50	2.08	2.29	2.29	2.50

COURSE OVERVIEW | MSW



Human Rights

Course Overview

Program Outcomes

PO1

Graduates will develop a critical and interdisciplinary understanding of social structures, inequalities, and systemic challenges, enabling them to design and implement effective social work interventions.

PO2

They will apply advanced social work theories, frameworks, and evidence-based practices to engage with individuals, families, groups, and communities at micro, meso, and macro levels.

PO3

Graduates will demonstrate professional competencies in clinical social work, community organization, policy advocacy, and participatory development, addressing diverse social issues.

PO4

They will uphold ethical principles, social justice, and human rights in their professional practice, ensuring dignity, inclusivity, and accountability in all interventions.

PO5

Graduates will integrate research methodologies, policy analysis, and program evaluation to enhance the effectiveness of social work interventions and contribute to knowledge production in the field.

PO6

They will critically assess and influence social policies, welfare programs, and governance structures to advocate for legislative reforms and rights-based approaches for marginalized communities.

PO7

Graduates will develop leadership, entrepreneurial, and management skills to design, implement, and sustain social initiatives, working collaboratively with multidisciplinary teams and stakeholders.

Course Outcomes

- | | |
|------------|---|
| CO1 | To remember the history, classification, and key milestones in the development of human rights. |
| CO2 | To understand the role of government and non-governmental organizations in promoting and protecting human rights in India. |
| CO3 | To apply para-legal skills such as drafting affidavits, public interest litigations, and first information reports. |
| CO4 | To analyze the impact of human rights violations on disadvantaged groups and assess the effectiveness of legal frameworks in addressing them. |

CO-PO Mapping

courseOutcomes	PO1	PO2	PO3	PO4	PO5	PO6	PO7	Average
COHURI 4.2.1	3	1	3	2	1	2	2	2
COHURI 4.2.2	3	1	3	2	2	2	3	2.28
COHURI 4.2.3	2	2	3	3	3	3	3	2.71
COHURI 4.2.4	3	1	3	3	2	2	3	2.42
Average	2.75	1.25	3	2.5	2	2.25	2.75	-

CO Attainment Weightages

Direct Attainment	Indirect Attainment
80 %	20 %

CO Assessment Weightages

Formative (CIE)	Summative (SEE)
40 %	60 %

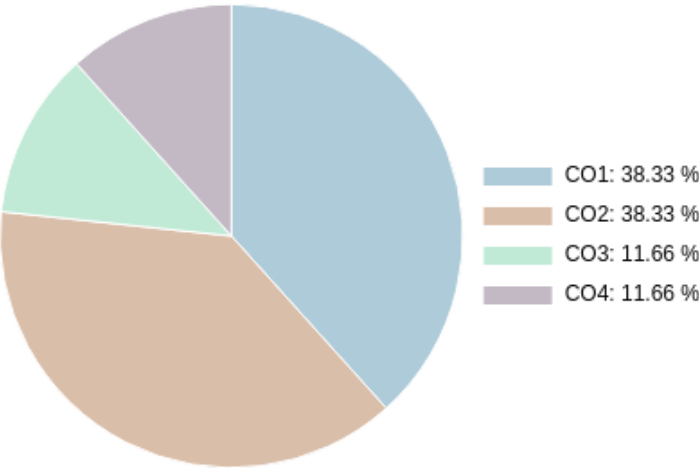
CO targets & Attainment Levels

CO	Target	Direct Attainment levels			Indirect Attainment levels		
		Level 1	Level 2	Level 3	Level 1	Level 2	Level 3
CO1	2	0 - 40	41 - 50	51 - 100	0 - 40	41 - 50	51 - 100
CO2	2.28	0 - 40	41 - 50	51 - 100	0 - 40	41 - 50	51 - 100
CO3	2.71	0 - 40	41 - 50	51 - 100	0 - 40	41 - 50	51 - 100
CO4	2.42	0 - 40	41 - 50	51 - 100	0 - 40	41 - 50	51 - 100

Exam Results

Exam Name	Threshold
Unit 1	50%
Unit 2	50%
Unit 3	50%
End Sem	50%

CO Coverage



COs	CO1	CO2	CO3	CO4
45	17.3	5.3	17.3	5.3
%	38.3	11.7	38.3	11.7

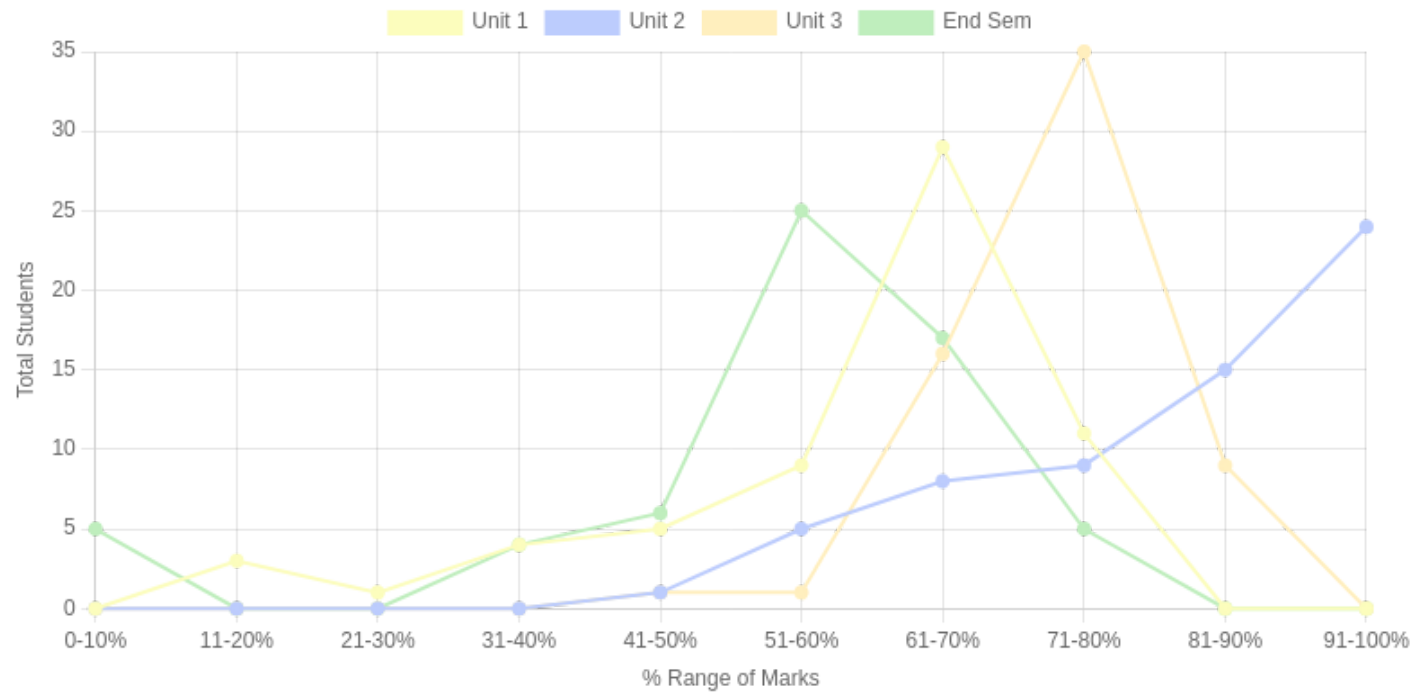
Formative (CIE) Assessments

Sr No	Exam Name	Total Marks	Threshold in %	CO1	CO2	CO3	CO4	CO5	CO6	Avg Attainment
1	Unit 1	5	50	3	3	3	3	-	-	3
2	Unit 2	5	50	3	3	3	3	-	-	3
3	Unit 3	5	50	3	3	3	3	-	-	3

Summative (SEE) Assessments

Sr No	Exam Name	Total Marks	Threshold in %	CO1	CO2	CO3	CO4	CO5	CO6	Avg Attainment
4	End Sem	30	50	3	3	3	3	-	-	3

Student % wise Distribution



Sr No	Assessment Title	Type	Total Marks	Avg Marks	Threshold in %	No of Students Scoring										Total Students Above Threshold
						0-10%	11-20%	21-30%	31-40%	41-50%	51-60%	61-70%	71-80%	81-90%	91-100%	
1	Unit 1	F	5	3.18	50	0	3	1	4	5	9	29	11	0	0	54
2	Unit 2	F	5	4.33	50	0	0	0	0	1	5	8	9	15	24	62
3	Unit 3	F	5	3.9	50	0	0	0	0	1	1	16	35	9	0	62
4	End Sem	S	30	16.51	50	5	0	0	4	6	25	17	5	0	0	50

CO Indirect Attainment

Course Exit Feedback Form MSW Sem 4

Q1	Were you able to remember the history, classification, and key milestones in the development of human rights?
Scale	Strongly Agree <input type="radio"/> Agree <input type="radio"/> Disagree <input type="radio"/>
Q2	Were you able to understand the role of government and non-governmental organizations in promoting and protecting human rights in India?
Scale	Strongly Agree <input type="radio"/> Agree <input type="radio"/> Disagree <input type="radio"/>
Q3	Were you able to apply para-legal skills such as drafting affidavits, public interest litigations, and first information reports?
Scale	Strongly Agree <input type="radio"/> Agree <input type="radio"/> Disagree <input type="radio"/>
Q4	Were you able to analyze the impact of human rights violations on disadvantaged groups and assess the effectiveness of legal frameworks in addressing them?
Scale	Strongly Agree <input type="radio"/> Agree <input type="radio"/> Disagree <input type="radio"/>

CO Attainment

CO	Direct Attainment	Indirect Attainment	Final Attainment	Target	Gap	Justification
CO1	3	3	3	2	1	-
CO2	3	3	3	2.28	0.72	-
CO3	3	3	3	2.71	0.29	-
CO4	3	3	3	2.42	0.58	-

Average CO Attainment : 3

PO Direct Attainment

Weighted Average Matrix

POs	PO1	PO2	PO3	PO4	PO5	PO6	PO7
Weighted Avg	2.75	1.25	3	2.5	2	2.25	2.75

Average CO Attainment : 3

POs	PO1	PO2	PO3	PO4	PO5	PO6	PO7
Calculation	2.75 (3)/ 3	1.25 (3)/ 3	3 (3)/ 3	2.5 (3)/ 3	2 (3)/ 3	2.25 (3)/ 3	2.75 (3)/ 3
Direct Attainment	2.75	1.25	3.00	2.50	2.00	2.25	2.75

COURSE OVERVIEW | MSW



Management of Non-Profit Organisation

Course Overview

Program Outcomes

PO1

Graduates will develop a critical and interdisciplinary understanding of social structures, inequalities, and systemic challenges, enabling them to design and implement effective social work interventions.

PO2

They will apply advanced social work theories, frameworks, and evidence-based practices to engage with individuals, families, groups, and communities at micro, meso, and macro levels.

PO3

Graduates will demonstrate professional competencies in clinical social work, community organization, policy advocacy, and participatory development, addressing diverse social issues.

PO4

They will uphold ethical principles, social justice, and human rights in their professional practice, ensuring dignity, inclusivity, and accountability in all interventions.

PO5

Graduates will integrate research methodologies, policy analysis, and program evaluation to enhance the effectiveness of social work interventions and contribute to knowledge production in the field.

PO6

They will critically assess and influence social policies, welfare programs, and governance structures to advocate for legislative reforms and rights-based approaches for marginalized communities.

PO7

Graduates will develop leadership, entrepreneurial, and management skills to design, implement, and sustain social initiatives, working collaboratively with multidisciplinary teams and stakeholders.

Course Outcomes

CO1

To Understand the fundamental principles of non-profit management, including leadership styles, human resource management, and financial planning for effective decision-making.

CO2

To Apply social entrepreneurial skills to enhance service delivery and resource mobilization in the non-profit sector.

CO3

To Analyze the impact of strategic planning, partnerships, and CSR initiatives on the sustainability and growth of non-profit organizations.

CO4

To Evaluate social impact measurement techniques, such as Social Return on Investment (SROI), to assess the effectiveness of non-profit initiatives.

CO-PO Mapping

courseOutcomes	PO1	PO2	PO3	PO4	PO5	PO6	PO7	Average
COMNPO 4.3.1	2	2	3	2	2	3	3	2.42
COMNPO 4.3.2	3	3	3	2	3	3	3	2.85
COMNPO 4.3.3	3	3	3	2	2	3	3	2.71
COMNPO 4.3.4	3	2	3	3	2	3	3	2.71
Average	2.75	2.5	3	2.25	2.25	3	3	-

CO Attainment Weightages

Direct Attainment	Indirect Attainment
80 %	20 %

CO Assessment Weightages

Formative (CIE)	Summative (SEE)
40 %	60 %

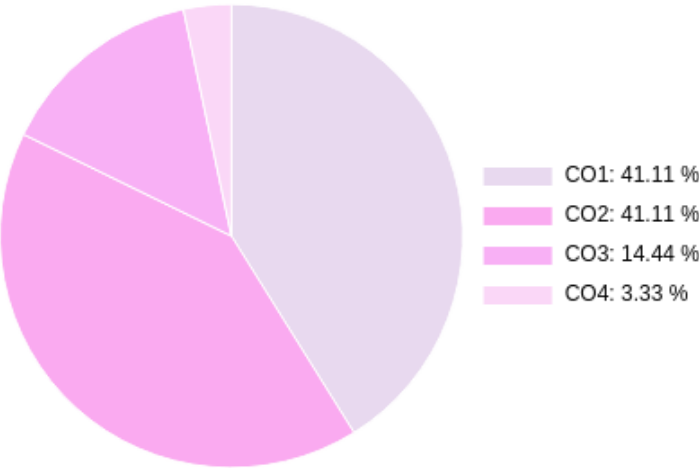
CO targets & Attainment Levels

CO	Target	Direct Attainment levels			Indirect Attainment levels		
		Level 1	Level 2	Level 3	Level 1	Level 2	Level 3
CO1	2.42	0 - 40	41 - 50	51 - 100	0 - 40	41 - 50	51 - 100
CO2	2.85	0 - 40	41 - 50	51 - 100	0 - 40	41 - 50	51 - 100
CO3	2.71	0 - 40	41 - 50	51 - 100	0 - 40	41 - 50	51 - 100
CO4	2.71	0 - 40	41 - 50	51 - 100	0 - 40	41 - 50	51 - 100

Exam Results

Exam Name	Threshold
Unit 1	50%
Unit 2	50%
Unit 3	50%
End Sem	50%

CO Coverage



COs	CO1	CO2	CO3	CO4
45	18.5	18.5	6.5	1.5
%	41.1	41.1	14.4	3.3

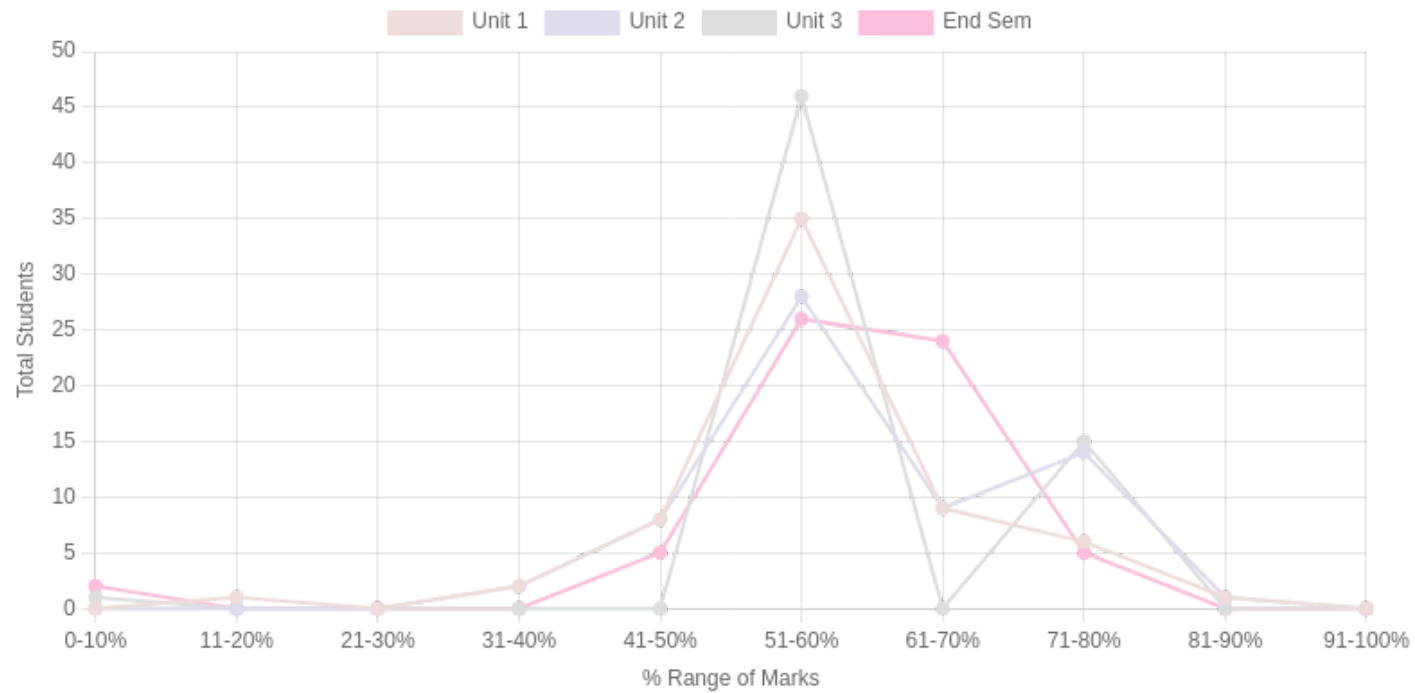
Formative (CIE) Assessments

Sr No	Exam Name	Total Marks	Threshold in %	CO1	CO2	CO3	CO4	CO5	CO6	Avg Attainment
1	Unit 1	5	50	3	-	-	-	-	-	3
2	Unit 2	5	50	-	3	-	-	-	-	3
3	Unit 3	5	50	-	-	3	-	-	-	3

Summative (SEE) Assessments

Sr No	Exam Name	Total Marks	Threshold in %	CO1	CO2	CO3	CO4	CO5	CO6	Avg Attainment
4	End Sem	30	50	3	3	3	3	-	-	3

Student % wise Distribution



Sr No	Assessment Title	Type	Total Marks	Avg Marks	Threshold in %	No of Students Scoring										Total Students Above Threshold
						0-10%	11-20%	21-30%	31-40%	41-50%	51-60%	61-70%	71-80%	81-90%	91-100%	
1	Unit 1	F	5	3.06	50	0	1	0	2	8	35	9	6	1	0	59
2	Unit 2	F	5	3.22	50	0	0	0	2	8	28	9	14	1	0	60
3	Unit 3	F	5	3.19	50	1	0	0	0	0	46	0	15	0	0	61
4	End Sem	S	30	18.01	50	2	0	0	0	5	26	24	5	0	0	58

CO Indirect Attainment

Course Exit Feedback Form MSW Sem 4

Q1	Were you able to understand the fundamental principles of non-profit management, including leadership styles, human resource management, and financial planning for effective decision-making?
Scale	Strongly Agree <input type="radio"/> Agree <input type="radio"/> Disagree <input type="radio"/>
Q2	Were you able to apply social entrepreneurial skills to enhance service delivery and resource mobilization in the non-profit sector?
Scale	Strongly Agree <input type="radio"/> Agree <input type="radio"/> Disagree <input type="radio"/>
Q3	Were you able to analyze the impact of strategic planning, partnerships, and CSR initiatives on the sustainability and growth of non-profit organizations?
Scale	Strongly Agree <input type="radio"/> Agree <input type="radio"/> Disagree <input type="radio"/>
Q4	Were you able to evaluate social impact measurement techniques, such as Social Return on Investment (SROI), to assess the effectiveness of non-profit initiatives?
Scale	Strongly Agree <input type="radio"/> Agree <input type="radio"/> Disagree <input type="radio"/>

CO Attainment

CO	Direct Attainment	Indirect Attainment	Final Attainment	Target	Gap	Justification
CO1	3	1	2.6	2.42	0.18	-
CO2	3	1	2.6	2.85	-0.25	-
CO3	3	1	2.6	2.71	-0.1	-
CO4	1.79	0	1.43	2.71	-1.28	-

Average CO Attainment : 2.3

PO Direct Attainment

Weighted Average Matrix

POs	PO1	PO2	PO3	PO4	PO5	PO6	PO7
Weighted Avg	2.75	2.5	3	2.25	2.25	3	3

Average CO Attainment : 2.3

POs	PO1	PO2	PO3	PO4	PO5	PO6	PO7
Calculation	2.75 (2.3)/ 3	2.5 (2.3)/ 3	3 (2.3)/ 3	2.25 (2.3)/ 3	2.25 (2.3)/ 3	3 (2.3)/ 3	3 (2.3)/ 3
Direct Attainment	2.11	1.92	2.30	1.72	1.72	2.30	2.30

COURSE OVERVIEW | MSW



Peace Education

Course Overview

Program Outcomes

PO1

Graduates will develop a critical and interdisciplinary understanding of social structures, inequalities, and systemic challenges, enabling them to design and implement effective social work interventions.

PO2

They will apply advanced social work theories, frameworks, and evidence-based practices to engage with individuals, families, groups, and communities at micro, meso, and macro levels.

PO3

Graduates will demonstrate professional competencies in clinical social work, community organization, policy advocacy, and participatory development, addressing diverse social issues.

PO4

They will uphold ethical principles, social justice, and human rights in their professional practice, ensuring dignity, inclusivity, and accountability in all interventions.

PO5

Graduates will integrate research methodologies, policy analysis, and program evaluation to enhance the effectiveness of social work interventions and contribute to knowledge production in the field.

PO6

They will critically assess and influence social policies, welfare programs, and governance structures to advocate for legislative reforms and rights-based approaches for marginalized communities.

PO7

Graduates will develop leadership, entrepreneurial, and management skills to design, implement, and sustain social initiatives, working collaboratively with multidisciplinary teams and stakeholders.

Course Outcomes

- | | |
|-----|---|
| CO1 | To understand the fundamental concepts of peace, conflict, and violence, and their implications in the Indian and global socio-political context. |
| CO2 | To apply peace education principles to address real-world issues such as communalism, radicalization, and migration through effective conflict resolution strategies. |
| CO3 | To analyze examine the role of governmental and non-governmental organizations in peacebuilding and conflict resolution. |
| CO4 | To evaluate the effectiveness of various peace interventions and propose improvements for sustainable peace initiatives. |

CO-PO Mapping

courseOutcomes	PO1	PO2	PO3	PO4	PO5	PO6	PO7	Average
COPEED 4.7.1	3	1	3	2	2	2	3	2.28
COPEED 4.7.2	3	2	3	2	3	3	3	2.71
COPEED 4.7.3	3	2	3	3	2	3	3	2.71
COPEED 4.7.4	3	2	3	3	2	3	3	2.71
Average	3	1.75	3	2.5	2.25	2.75	3	-

CO Attainment Weightages

Direct Attainment	Indirect Attainment
80 %	20 %

CO Assessment Weightages

Formative (CIE)	Summative (SEE)
40 %	60 %

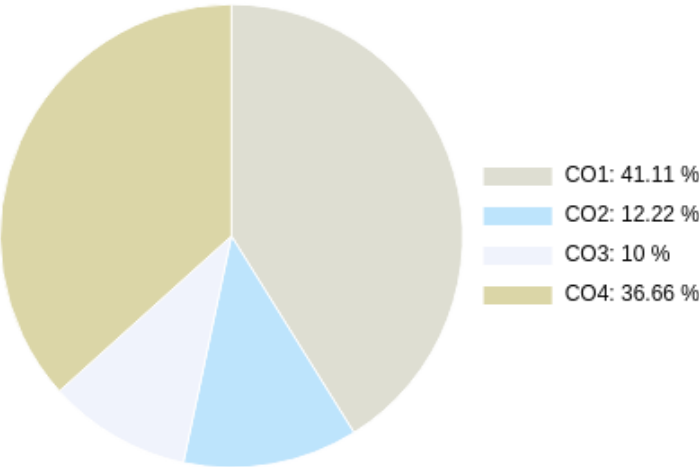
CO targets & Attainment Levels

CO	Target	Direct Attainment levels			Indirect Attainment levels		
		Level 1	Level 2	Level 3	Level 1	Level 2	Level 3
CO1	2.28	0 - 40	41 - 50	51 - 100	0 - 40	41 - 50	51 - 100
CO2	2.71	0 - 40	41 - 50	51 - 100	0 - 40	41 - 50	51 - 100
CO3	2.71	0 - 40	41 - 50	51 - 100	0 - 40	41 - 50	51 - 100
CO4	2.71	0 - 40	41 - 50	51 - 100	0 - 40	41 - 50	51 - 100

Exam Results

Exam Name	Threshold
Unit 1	50%
Unit 2	50%
Unit 3	50%
Unit 4	50%
End Sem	50%

CO Coverage



COs	CO1	CO2	CO3	CO4
45	18.5	16.5	5.5	4.5
%	41.1	36.7	12.2	10.0

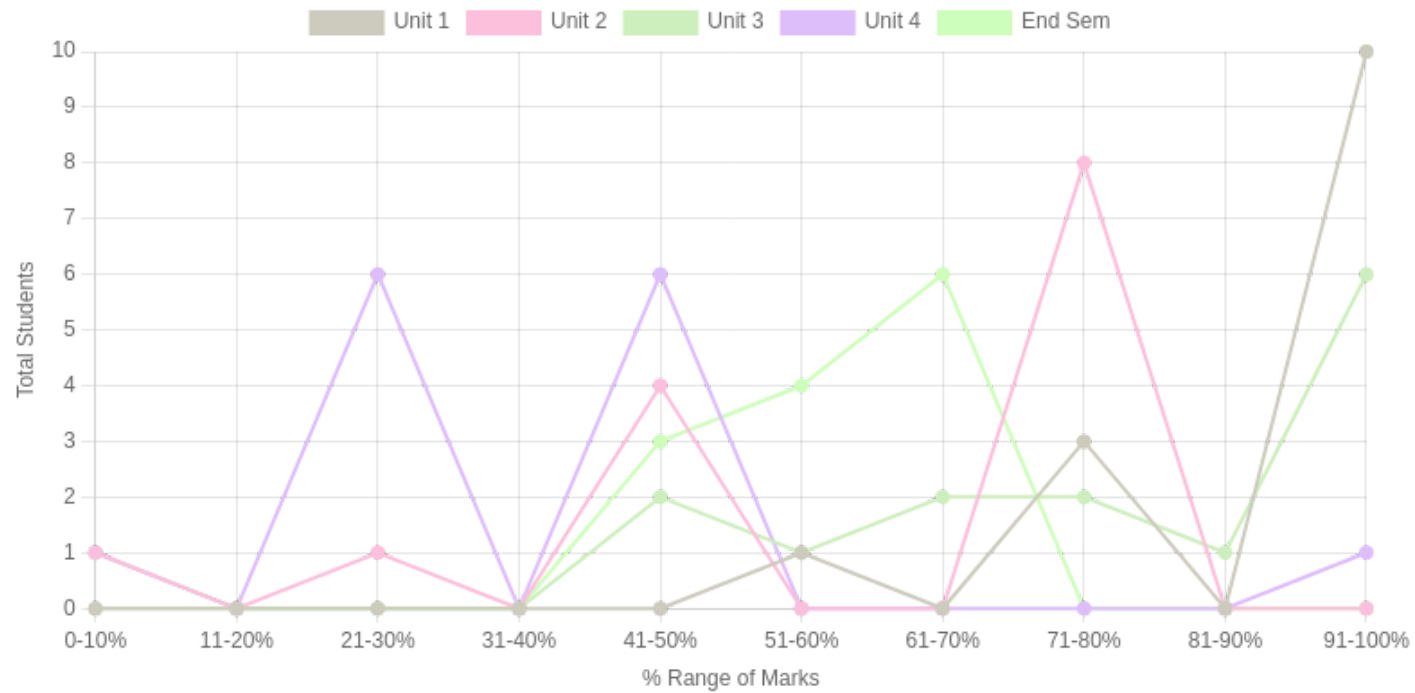
Formative (CIE) Assessments

Sr No	Exam Name	Total Marks	Threshold in %	CO1	CO2	CO3	CO4	CO5	CO6	Avg Attainment
1	Unit 1	5	50	3	-	-	-	-	-	3
2	Unit 2	2	50	-	-	3	3	-	-	3
3	Unit 3	6	50	-	3	3	-	-	-	3
4	Unit 4	2	50	-	-	-	2	-	-	2

Summative (SEE) Assessments

Sr No	Exam Name	Total Marks	Threshold in %	CO1	CO2	CO3	CO4	CO5	CO6	Avg Attainment
5	End Sem	30	50	3	3	3	3	-	-	3

Student % wise Distribution



Sr No	Assessment Title	Type	Total Marks	Avg Marks	Threshold in %	No of Students Scoring										Total Students Above Threshold
						0-10%	11-20%	21-30%	31-40%	41-50%	51-60%	61-70%	71-80%	81-90%	91-100%	
1	Unit 1	F	5	4.64	50	0	0	0	0	0	1	0	3	0	10	14
2	Unit 2	F	2	1.17	50	1	0	1	0	4	0	0	8	0	0	12
3	Unit 3	F	6	4.71	50	0	0	0	0	2	1	2	2	1	6	13
4	Unit 4	F	2	0.78	50	1	0	6	0	6	0	0	0	0	1	7
5	End Sem	S	30	16.78	50	1	0	0	0	3	4	6	0	0	0	12

CO Indirect Attainment

Course Exit Feedback Form MSW Sem 4

Q1	Were you able to understand the fundamental concepts of peace, conflict, and violence, and their implications in the Indian and global socio-political context?
Scale	Strongly Agree <input type="radio"/> Agree <input type="radio"/> Disagree <input type="radio"/>
Q2	Were you able to apply peace education principles to address real-world issues such as communalism, radicalization, and migration through effective conflict resolution strategies?
Scale	Strongly Agree <input type="radio"/> Agree <input type="radio"/> Disagree <input type="radio"/>
Q3	Were you able to analyze the role of governmental and non-governmental organizations in peacebuilding and conflict resolution?
Scale	Strongly Agree <input type="radio"/> Agree <input type="radio"/> Disagree <input type="radio"/>
Q4	Were you able to evaluate the effectiveness of various peace interventions and propose improvements for sustainable peace initiatives?
Scale	Strongly Agree <input type="radio"/> Agree <input type="radio"/> Disagree <input type="radio"/>

CO Attainment

CO	Direct Attainment	Indirect Attainment	Final Attainment	Target	Gap	Justification
CO1	3	3	3	2.28	0.72	-
CO2	3	3	3	2.71	0.29	-
CO3	3	3	3	2.71	0.29	-
CO4	2.8	3	2.84	2.71	0.12	-

Average CO Attainment : 2.96

PO Direct Attainment

Weighted Average Matrix

POs	PO1	PO2	PO3	PO4	PO5	PO6	PO7
Weighted Avg	3	1.75	3	2.5	2.25	2.75	3

Average CO Attainment : 2.96

POs	PO1	PO2	PO3	PO4	PO5	PO6	PO7
Calculation	3 (2.96)/ 3	1.75 (2.96)/ 3	3 (2.96)/ 3	2.5 (2.96)/ 3	2.25 (2.96)/ 3	2.75 (2.96)/ 3	3 (2.96)/ 3
Direct Attainment	2.96	1.73	2.96	2.47	2.22	2.71	2.96

COURSE OVERVIEW | MSW



Perspectives on Ageing

Course Overview

Program Outcomes

PO1

Graduates will develop a critical and interdisciplinary understanding of social structures, inequalities, and systemic challenges, enabling them to design and implement effective social work interventions.

PO2

They will apply advanced social work theories, frameworks, and evidence-based practices to engage with individuals, families, groups, and communities at micro, meso, and macro levels.

PO3

Graduates will demonstrate professional competencies in clinical social work, community organization, policy advocacy, and participatory development, addressing diverse social issues.

PO4

They will uphold ethical principles, social justice, and human rights in their professional practice, ensuring dignity, inclusivity, and accountability in all interventions.

PO5

Graduates will integrate research methodologies, policy analysis, and program evaluation to enhance the effectiveness of social work interventions and contribute to knowledge production in the field.

PO6

They will critically assess and influence social policies, welfare programs, and governance structures to advocate for legislative reforms and rights-based approaches for marginalized communities.

PO7

Graduates will develop leadership, entrepreneurial, and management skills to design, implement, and sustain social initiatives, working collaboratively with multidisciplinary teams and stakeholders.

Course Outcomes

- | | |
|------------|---|
| CO1 | To Understand the demographic trends, theoretical perspectives, and scope of social work in the field of ageing. |
| CO2 | To Apply knowledge of ageing-related issues to design interventions that enhance the well-being of older persons. |
| CO3 | To Analyze national and international policies, programs, and services for older persons to identify gaps and areas for improvement. |
| CO4 | To Evaluate the role of social work professionals in ageing-related care, advocacy, and policy-making to foster a more inclusive society. |

CO-PO Mapping

courseOutcomes	PO1	PO2	PO3	PO4	PO5	PO6	PO7	Average
COPEAG 4.6.1	3	1	3	2	2	2	3	2.28
COPEAG 4.6.2	3	2	3	2	3	3	3	2.71
COPEAG 4.6.3	3	1	3	3	2	3	3	2.57
COPEAG 4.6.4	3	2	3	3	2	3	3	2.71
Average	3	1.5	3	2.5	2.25	2.75	3	-

CO Attainment Weightages

Direct Attainment	Indirect Attainment
80 %	20 %

CO Assessment Weightages

Formative (CIE)	Summative (SEE)
40 %	60 %

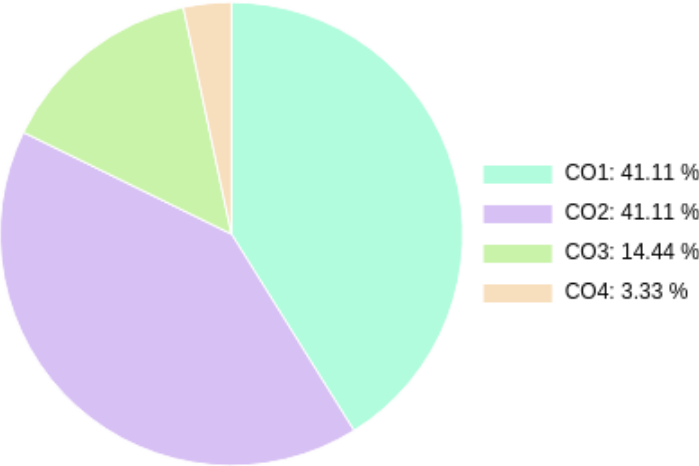
CO targets & Attainment Levels

CO	Target	Direct Attainment levels			Indirect Attainment levels		
		Level 1	Level 2	Level 3	Level 1	Level 2	Level 3
CO1	2.28	0 - 40	41 - 50	51 - 100	0 - 40	41 - 50	51 - 100
CO2	2.71	0 - 40	41 - 50	51 - 100	0 - 40	41 - 50	51 - 100
CO3	2.57	0 - 40	41 - 50	51 - 100	0 - 40	41 - 50	51 - 100
CO4	2.71	0 - 40	41 - 50	51 - 100	0 - 40	41 - 50	51 - 100

Exam Results

Exam Name	Threshold
Unit 1	50%
Unit 2	50%
Unit 3	50%
End Sem	50%

CO Coverage



COs	CO1	CO2	CO3	CO4
45	18.5	18.5	6.5	1.5
%	41.1	41.1	14.4	3.3

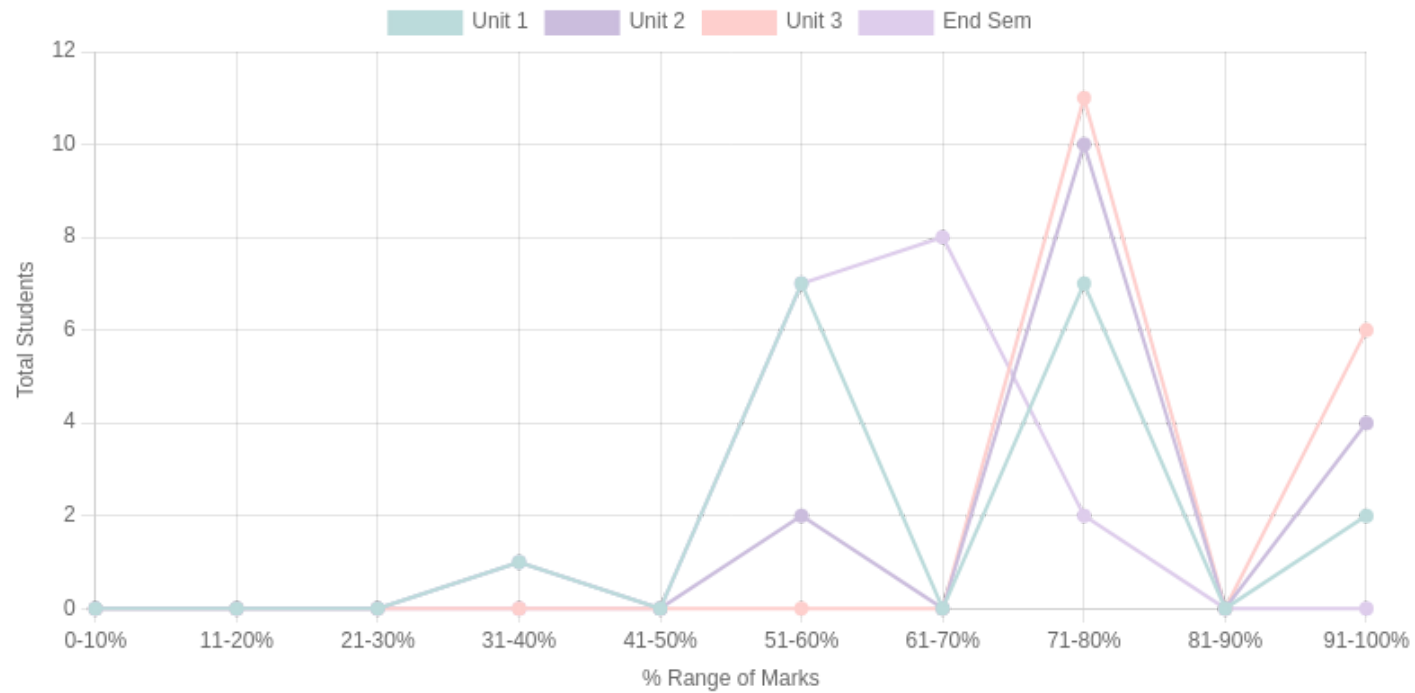
Formative (CIE) Assessments

Sr No	Exam Name	Total Marks	Threshold in %	CO1	CO2	CO3	CO4	CO5	CO6	Avg Attainment
1	Unit 1	5	50	3	-	-	-	-	-	3
2	Unit 2	5	50	-	3	-	-	-	-	3
3	Unit 3	5	50	-	-	3	-	-	-	3

Summative (SEE) Assessments

Sr No	Exam Name	Total Marks	Threshold in %	CO1	CO2	CO3	CO4	CO5	CO6	Avg Attainment
4	End Sem	30	50	2	2	1	1	-	-	1.5

Student % wise Distribution



Sr No	Assessment Title	Type	Total Marks	Avg Marks	Threshold in %	No of Students Scoring										Total Students Above Threshold
						0-10%	11-20%	21-30%	31-40%	41-50%	51-60%	61-70%	71-80%	81-90%	91-100%	
1	Unit 1	F	5	3.58	50	0	0	0	1	0	7	0	7	0	2	16
2	Unit 2	F	5	4	50	0	0	0	1	0	2	0	10	0	4	16
3	Unit 3	F	5	4.35	50	0	0	0	0	0	0	0	11	0	6	17
4	End Sem	S	30	19.14	50	0	0	0	0	0	7	8	2	0	0	17

CO Indirect Attainment

Course Exit Feedback Form MSW Sem 4

Q1	Were you able to understand the demographic trends, theoretical perspectives, and scope of social work in the field of ageing?
Scale	Strongly Agree <input type="radio"/> Agree <input type="radio"/> Disagree <input type="radio"/>
Q2	Were you able to apply knowledge of ageing-related issues to design interventions that enhance the well-being of older persons?
Scale	Strongly Agree <input type="radio"/> Agree <input type="radio"/> Disagree <input type="radio"/>
Q3	Were you able to analyze national and international policies, programs, and services for older persons to identify gaps and areas for improvement?
Scale	Strongly Agree <input type="radio"/> Agree <input type="radio"/> Disagree <input type="radio"/>
Q4	Were you able to evaluate the role of social work professionals in ageing-related care, advocacy, and policy-making to foster a more inclusive society?
Scale	Strongly Agree <input type="radio"/> Agree <input type="radio"/> Disagree <input type="radio"/>

CO Attainment

CO	Direct Attainment	Indirect Attainment	Final Attainment	Target	Gap	Justification
CO1	2.4	3	2.52	2.28	0.24	-
CO2	2.4	3	2.52	2.71	-0.18	-
CO3	1.8	3	2.04	2.57	-0.52	-
CO4	0.6	3	1.08	2.71	-1.63	-

Average CO Attainment : 2.04

PO Direct Attainment

Weighted Average Matrix

POs	PO1	PO2	PO3	PO4	PO5	PO6	PO7
Weighted Avg	3	1.5	3	2.5	2.25	2.75	3

Average CO Attainment : 2.04

POs	PO1	PO2	PO3	PO4	PO5	PO6	PO7
Calculation	3 (2.04)/ 3	1.5 (2.04)/ 3	3 (2.04)/ 3	2.5 (2.04)/ 3	2.25 (2.04)/ 3	2.75 (2.04)/ 3	3 (2.04)/ 3
Direct Attainment	2.04	1.02	2.04	1.70	1.53	1.87	2.04

COURSE OVERVIEW | MSW