



Women's Studies

Course Overview

Program Outcomes

PO1

Graduates will develop a critical and interdisciplinary understanding of social structures, inequalities, and systemic challenges, enabling them to design and implement effective social work interventions.

PO2

They will apply advanced social work theories, frameworks, and evidence-based practices to engage with individuals, families, groups, and communities at micro, meso, and macro levels.

PO3

Graduates will demonstrate professional competencies in clinical social work, community organization, policy advocacy, and participatory development, addressing diverse social issues.

PO4

They will uphold ethical principles, social justice, and human rights in their professional practice, ensuring dignity, inclusivity, and accountability in all interventions.

PO5

Graduates will integrate research methodologies, policy analysis, and program evaluation to enhance the effectiveness of social work interventions and contribute to knowledge production in the field.

PO6

They will critically assess and influence social policies, welfare programs, and governance structures to advocate for legislative reforms and rights-based approaches for marginalized communities.

PO7

Graduates will develop leadership, entrepreneurial, and management skills to design, implement, and sustain social initiatives, working collaboratively with multidisciplinary teams and stakeholders.

Course Outcomes

- | | |
|-----|--|
| CO1 | To Remember key concepts such as sex, gender identity, patriarchy, and intersectionality, and their role in shaping gender discrimination and bias. |
| CO2 | To Analyze examine the impact of socio-economic, legal, and cultural structures on gender-based violence and discrimination. |
| CO3 | To apply feminist theories and frameworks to assess the role of women's movements and policy initiatives in promoting gender equity. |
| CO4 | To Evaluate the effectiveness of global and national interventions, legal frameworks, and feminist strategies in addressing gender-based violence and promoting women's empowerment. |

CO-PO Mapping

courseOutcomes	PO1	PO2	PO3	PO4	PO5	PO6	PO7	Average
CODSE 406.1	3	1	2	1	1	1	1	1.42
CODSE 406.2	3	2	3	2	2	2	2	2.28
CODSE 406.3	3	3	3	2	3	3	3	2.85
CODSE 406.4	3	3	3	3	3	3	3	3
Average	3	2.25	2.75	2	2.25	2.25	2.25	-

CO Attainment Weightages

Direct Attainment	Indirect Attainment
80 %	20 %

CO Assessment Weightages

Formative (CIE)	Summative (SEE)
40 %	60 %

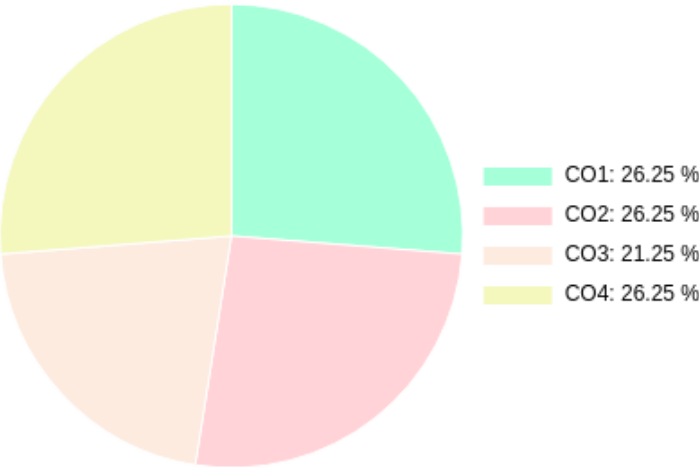
CO targets & Attainment Levels

CO	Target	Direct Attainment levels			Indirect Attainment levels		
		Level 1	Level 2	Level 3	Level 1	Level 2	Level 3
CO1	1.42	0 - 40	41 - 50	51 - 100	0 - 40	41 - 50	51 - 100
CO2	2.28	0 - 40	41 - 50	51 - 100	0 - 40	41 - 50	51 - 100
CO3	2.85	0 - 40	41 - 50	51 - 100	0 - 40	41 - 50	51 - 100
CO4	3	0 - 40	41 - 50	51 - 100	0 - 40	41 - 50	51 - 100

Exam Results

Exam Name	Threshold
Unit 1	50%
Unit 2	50%
Unit 4	50%
Unit 3	50%
External Exam	50%

CO Coverage



COs	CO1	CO2	CO3	CO4
100	26.3	26.3	26.3	21.3
%	26.3	26.3	26.3	21.3

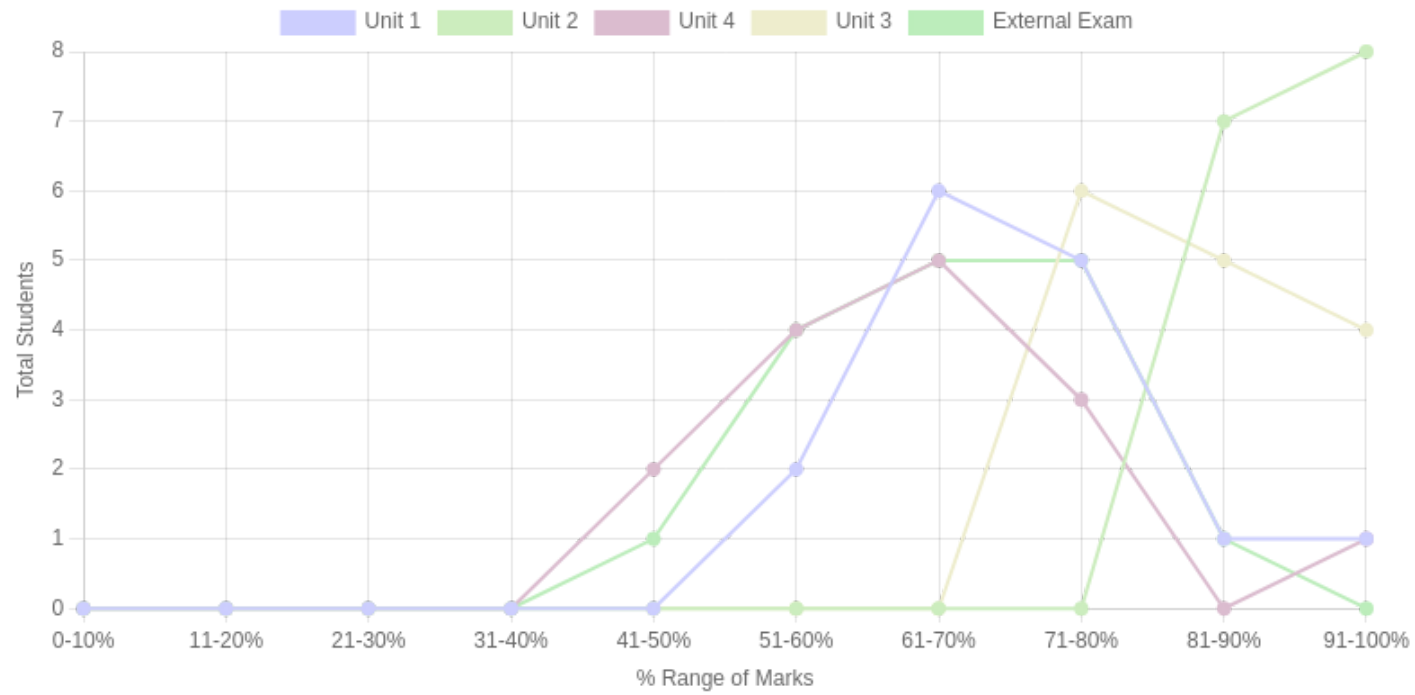
Formative (CIE) Assessments

Sr No	Exam Name	Total Marks	Threshold in %	CO1	CO2	CO3	CO4	CO5	CO6	Avg Attainment
1	Unit 1	10	50	3	3	3	3	-	-	3
2	Unit 2	16	50	3	3	3	3	-	-	3
3	Unit 4	9	50	3	3	3	3	-	-	3
4	Unit 3	15	50	3	3	3	-	-	-	3

Summative (SEE) Assessments

Sr No	Exam Name	Total Marks	Threshold in %	CO1	CO2	CO3	CO4	CO5	CO6	Avg Attainment
5	External Exam	50	50	3	3	3	3	-	-	3

Student % wise Distribution



Sr No	Assessment Title	Type	Total Marks	Avg Marks	Threshold in %	No of Students Scoring										Total Students Above Threshold
						0-10%	11-20%	21-30%	31-40%	41-50%	51-60%	61-70%	71-80%	81-90%	91-100%	
1	Unit 1	F	10	7.3	50	0	0	0	0	0	2	6	5	1	1	15
2	Unit 2	F	16	14.6	50	0	0	0	0	0	0	0	0	7	8	15
3	Unit 4	F	9	5.7	50	0	0	0	0	2	4	5	3	0	1	14
4	Unit 3	F	15	12.76	50	0	0	0	0	0	0	0	6	5	4	15
5	External Exam	S	50	33.56	50	0	0	0	0	1	4	5	5	1	0	15

CO Indirect Attainment

Course Exit Feedback MSW Sem 2

Q1	Were you able to remember key concepts such as sex, gender identity, patriarchy, and intersectionality, and their role in shaping gender discrimination and bias?
Scale	Strongly Agree <input type="radio"/> Agree <input type="radio"/> Disagree <input type="radio"/>
Q2	Were you able to analyze the impact of socio-economic, legal, and cultural structures on gender-based violence and discrimination?
Scale	Strongly Agree <input type="radio"/> Agree <input type="radio"/> Disagree <input type="radio"/>
Q3	Were you able to apply feminist theories and frameworks to assess the role of women's movements and policy initiatives in promoting gender equity?
Scale	Strongly Agree <input type="radio"/> Agree <input type="radio"/> Disagree <input type="radio"/>
Q4	Were you able to evaluate the effectiveness of global and national interventions, legal frameworks, and feminist strategies in addressing gender-based violence and promoting women's empowerment?
Scale	Strongly Agree <input type="radio"/> Agree <input type="radio"/> Disagree <input type="radio"/>

CO Attainment

CO	Direct Attainment	Indirect Attainment	Final Attainment	Target	Gap	Justification
CO1	3	3	3	1.42	1.58	-
CO2	3	3	3	2.28	0.72	-
CO3	3	3	3	2.85	0.14	-
CO4	3	3	3	3	-	-

Average CO Attainment : 3

PO Direct Attainment

Weighted Average Matrix

POs	PO1	PO2	PO3	PO4	PO5	PO6	PO7
Weighted Avg	3	2.25	2.75	2	2.25	2.25	2.25

Average CO Attainment : 3

POs	PO1	PO2	PO3	PO4	PO5	PO6	PO7
Calculation	3 (3)/ 3	2.25 (3)/ 3	2.75 (3)/ 3	2 (3)/ 3	2.25 (3)/ 3	2.25 (3)/ 3	2.25 (3)/ 3
Direct Attainment	3.00	2.25	2.75	2.00	2.25	2.25	2.25

COURSE OVERVIEW | MSW



Community Organisation

Course Overview

Program Outcomes

- | | |
|-----|---|
| PO1 | Graduates will develop a critical and interdisciplinary understanding of social structures, inequalities, and systemic challenges, enabling them to design and implement effective social work interventions. |
| PO2 | They will apply advanced social work theories, frameworks, and evidence-based practices to engage with individuals, families, groups, and communities at micro, meso, and macro levels. |
| PO3 | Graduates will demonstrate professional competencies in clinical social work, community organization, policy advocacy, and participatory development, addressing diverse social issues. |
| PO4 | They will uphold ethical principles, social justice, and human rights in their professional practice, ensuring dignity, inclusivity, and accountability in all interventions. |
| PO5 | Graduates will integrate research methodologies, policy analysis, and program evaluation to enhance the effectiveness of social work interventions and contribute to knowledge production in the field. |
| PO6 | They will critically assess and influence social policies, welfare programs, and governance structures to advocate for legislative reforms and rights-based approaches for marginalized communities. |
| PO7 | Graduates will develop leadership, entrepreneurial, and management skills to design, implement, and sustain social initiatives, working collaboratively with multidisciplinary teams and stakeholders. |

Course Outcomes

- | | |
|------------|---|
| CO1 | To remember key concepts of community organization, including models, principles, and historical evolution in India and the West. |
| CO2 | To understand the role of participatory approaches and community engagement in addressing social issues and empowering marginalized groups. |
| CO3 | To apply community mapping techniques and assessment tools to identify community needs and design appropriate interventions. |
| CO4 | To analyze various perspectives on community organization, comparing Indian and Western approaches to mobilizing communities for change. |

CO-PO Mapping

courseOutcomes	PO1	PO2	PO3	PO4	PO5	PO6	PO7	Average
COCC 202.1	3	1	2	2	2	2	2	2
COCC 202.2	3	2	2	2	3	2	3	2.42
COCC 202.3	3	2	3	3	3	3	3	2.85
COCC 202.4	3	2	3	3	2	2	3	2.57
Average	3	1.75	2.5	2.5	2.5	2.25	2.75	-

CO Attainment Weightages

Direct Attainment	Indirect Attainment
80 %	20 %

CO Assessment Weightages

Formative (CIE)	Summative (SEE)
40 %	60 %

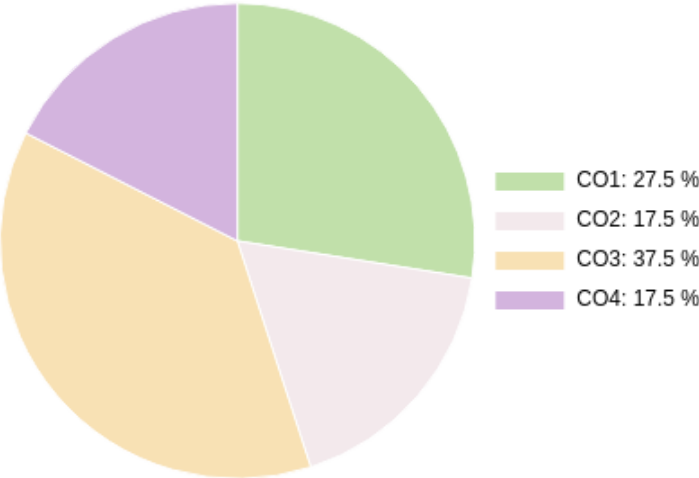
CO targets & Attainment Levels

CO	Target	Direct Attainment levels			Indirect Attainment levels		
		Level 1	Level 2	Level 3	Level 1	Level 2	Level 3
CO1	2	0 - 40	41 - 50	51 - 100	0 - 40	41 - 50	51 - 100
CO2	2.42	0 - 40	41 - 50	51 - 100	0 - 40	41 - 50	51 - 100
CO3	2.85	0 - 40	41 - 50	51 - 100	0 - 40	41 - 50	51 - 100
CO4	2.57	0 - 40	41 - 50	51 - 100	0 - 40	41 - 50	51 - 100

Exam Results

Exam Name	Threshold
Unit 1	50%
Unit 2	50%
Unit 4	50%
Unit 3	50%
External Exam	50%

CO Coverage



COs	CO1	CO2	CO3	CO4
100	27.5	17.5	17.5	37.5
%	27.5	17.5	17.5	37.5

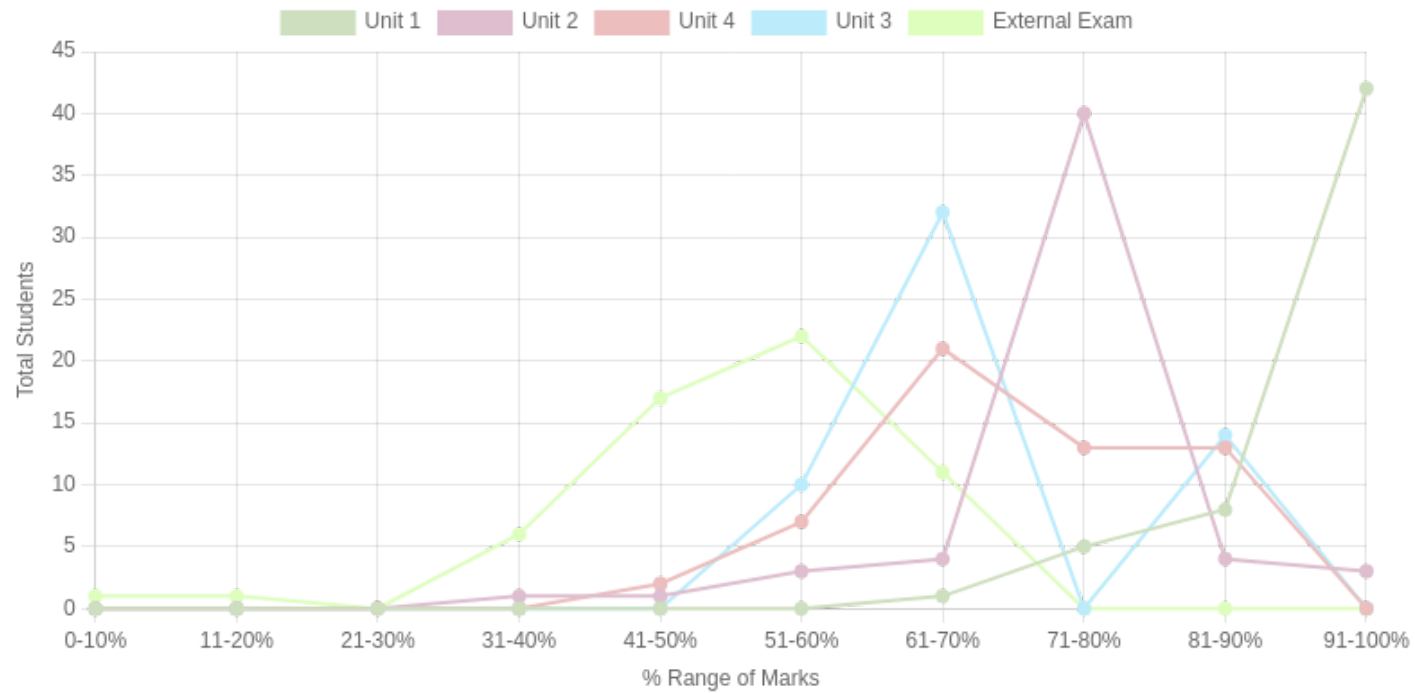
Formative (CIE) Assessments

Sr No	Exam Name	Total Marks	Threshold in %	CO1	CO2	CO3	CO4	CO5	CO6	Avg Attainment
1	Unit 1	10	50	3	-	-	-	-	-	3
2	Unit 2	10	50	3	3	-	-	-	-	3
3	Unit 4	20	50	-	-	-	3	-	-	3
4	Unit 3	10	50	-	-	3	3	-	-	3

Summative (SEE) Assessments

Sr No	Exam Name	Total Marks	Threshold in %	CO1	CO2	CO3	CO4	CO5	CO6	Avg Attainment
5	External Exam	50	50	3	3	3	3	-	-	3

Student % wise Distribution



Sr No	Assessment Title	Type	Total Marks	Avg Marks	Threshold in %	No of Students Scoring										Total Students Above Threshold
						0-10%	11-20%	21-30%	31-40%	41-50%	51-60%	61-70%	71-80%	81-90%	91-100%	
1	Unit 1	F	10	9.4	50	0	0	0	0	0	0	1	5	8	42	56
2	Unit 2	F	10	7.75	50	0	0	0	1	1	3	4	40	4	3	55
3	Unit 4	F	20	14.41	50	0	0	0	0	2	7	21	13	13	0	56
4	Unit 3	F	10	7.32	50	0	0	0	0	0	10	32	0	14	0	56
5	External Exam	S	50	25.41	50	1	1	0	6	17	22	11	0	0	0	37

CO Indirect Attainment

Course Exit Feedback MSW Sem 2

Q1	Were you able to remember key concepts of community organization, including models, principles, and historical evolution in India and the West?
Scale	Strongly Agree <input type="radio"/> Agree <input type="radio"/> Disagree <input type="radio"/>
Q2	Were you able to understand the role of participatory approaches and community engagement in addressing social issues and empowering marginalized groups?
Scale	Strongly Agree <input type="radio"/> Agree <input type="radio"/> Disagree <input type="radio"/>
Q3	Were you able to apply community mapping techniques and assessment tools to identify community needs and design appropriate interventions?
Scale	Strongly Agree <input type="radio"/> Agree <input type="radio"/> Disagree <input type="radio"/>
Q4	Were you able to analyze various perspectives on community organization, comparing Indian and Western approaches to mobilizing communities for change?
Scale	Strongly Agree <input type="radio"/> Agree <input type="radio"/> Disagree <input type="radio"/>

CO Attainment

CO	Direct Attainment	Indirect Attainment	Final Attainment	Target	Gap	Justification
CO1	3	1	2.6	2	0.6	-
CO2	3	2	2.8	2.42	0.37	-
CO3	3	1	2.6	2.85	-0.25	-
CO4	3	1	2.6	2.57	0.03	-

Average CO Attainment : 2.65

PO Direct Attainment

Weighted Average Matrix

POs	PO1	PO2	PO3	PO4	PO5	PO6	PO7
Weighted Avg	3	1.75	2.5	2.5	2.5	2.25	2.75

Average CO Attainment : 2.65

POs	PO1	PO2	PO3	PO4	PO5	PO6	PO7
Calculation	3 (2.65)/ 3	1.75 (2.65)/ 3	2.5 (2.65)/ 3	2.5 (2.65)/ 3	2.5 (2.65)/ 3	2.25 (2.65)/ 3	2.75 (2.65)/ 3
Direct Attainment	2.65	1.55	2.21	2.21	2.21	1.99	2.43

COURSE OVERVIEW | MSW



Field Work -II

Course Overview

Program Outcomes

- | | |
|-----|---|
| PO1 | Graduates will develop a critical and interdisciplinary understanding of social structures, inequalities, and systemic challenges, enabling them to design and implement effective social work interventions. |
| PO2 | They will apply advanced social work theories, frameworks, and evidence-based practices to engage with individuals, families, groups, and communities at micro, meso, and macro levels. |
| PO3 | Graduates will demonstrate professional competencies in clinical social work, community organization, policy advocacy, and participatory development, addressing diverse social issues. |
| PO4 | They will uphold ethical principles, social justice, and human rights in their professional practice, ensuring dignity, inclusivity, and accountability in all interventions. |
| PO5 | Graduates will integrate research methodologies, policy analysis, and program evaluation to enhance the effectiveness of social work interventions and contribute to knowledge production in the field. |
| PO6 | They will critically assess and influence social policies, welfare programs, and governance structures to advocate for legislative reforms and rights-based approaches for marginalized communities. |
| PO7 | Graduates will develop leadership, entrepreneurial, and management skills to design, implement, and sustain social initiatives, working collaboratively with multidisciplinary teams and stakeholders. |

Course Outcomes

- | | |
|-----|--|
| CO1 | Understand the role of a professional social worker and the importance of teamwork in fieldwork settings. |
| CO2 | To apply the ability to mobilize resources and effectively organize programs for the target communities. |
| CO3 | To Analyze the documentation and administrative processes involved in fieldwork and their impact on social service organizations. |
| CO4 | To evaluate personal growth and professional development through self-awareness and reflective documentation of fieldwork experiences. |

CO-PO Mapping

courseOutcomes	PO1	PO2	PO3	PO4	PO5	PO6	PO7	Average
COCC407.1	3	2	2	2	3	2	2	2.28
COCC407.2	3	3	3	2	3	3	3	2.85
COCC407.3	2	2	3	2	2	3	2	2.28
COCC407.4	2	2	2	2	3	2	2	2.14
Average	2.5	2.25	2.5	2	2.75	2.5	2.25	-

CO Attainment Weightages

Direct Attainment	Indirect Attainment
80 %	20 %

CO Assessment Weightages

Formative (CIE)	Summative (SEE)
40 %	60 %

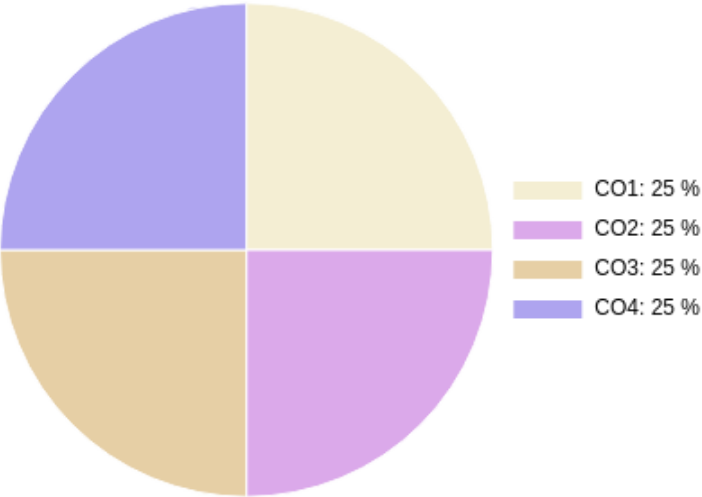
CO targets & Attainment Levels

CO	Target	Direct Attainment levels			Indirect Attainment levels		
		Level 1	Level 2	Level 3	Level 1	Level 2	Level 3
CO1	2.28	0 - 40	41 - 50	51 - 100	0 - 40	41 - 50	51 - 100
CO2	2.85	0 - 40	41 - 50	51 - 100	0 - 40	41 - 50	51 - 100
CO3	2.28	0 - 40	41 - 50	51 - 100	0 - 40	41 - 50	51 - 100
CO4	2.14	0 - 40	41 - 50	51 - 100	0 - 40	41 - 50	51 - 100

Exam Results

Exam Name	Threshold
Internal Exam	50%
External Exam	50%

CO Coverage



COs	CO1	CO2	CO3	CO4
100	25.0	25.0	25.0	25.0
%	25.0	25.0	25.0	25.0

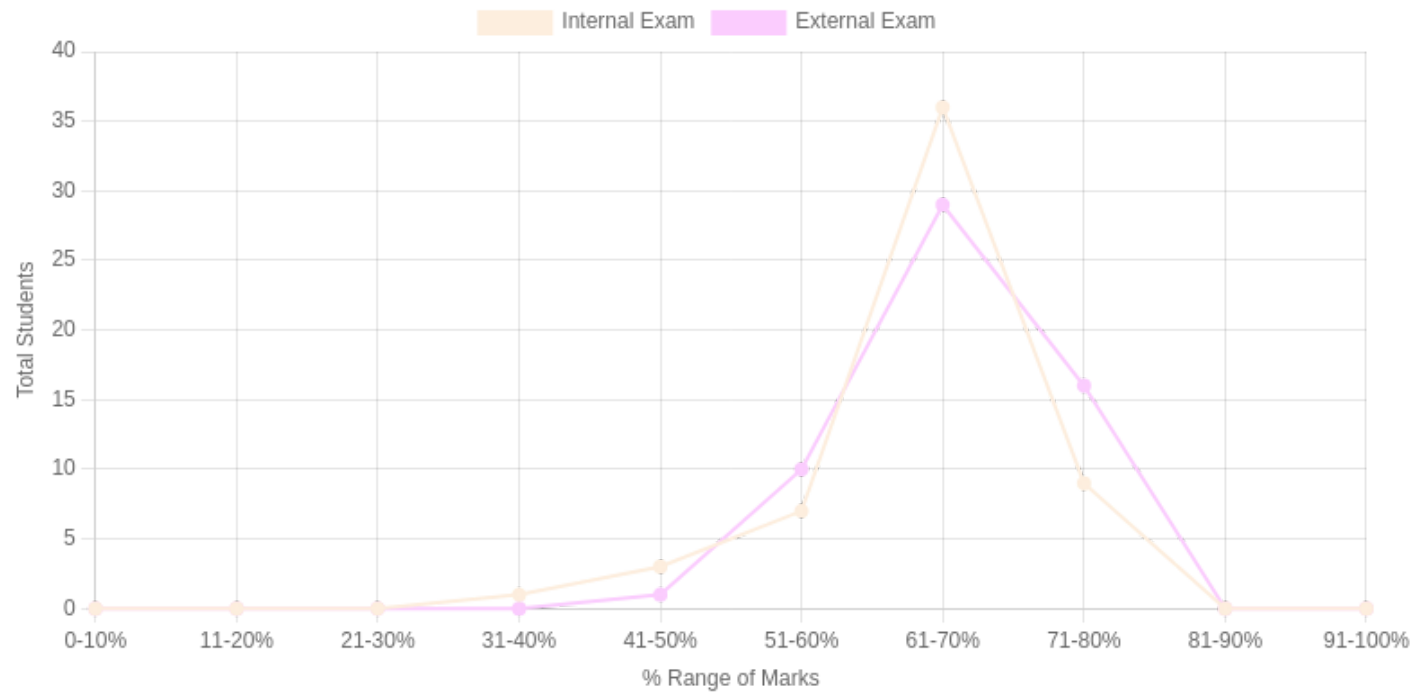
Formative (CIE) Assessments

Sr No	Exam Name	Total Marks	Threshold in %	CO1	CO2	CO3	CO4	CO5	CO6	Avg Attainment
1	Internal Exam	60	50	3	3	3	3	-	-	3

Summative (SEE) Assessments

Sr No	Exam Name	Total Marks	Threshold in %	CO1	CO2	CO3	CO4	CO5	CO6	Avg Attainment
2	External Exam	40	50	3	3	3	3	-	-	3

Student % wise Distribution



Sr No	Assessment Title	Type	Total Marks	Avg Marks	Threshold in %	No of Students Scoring										Total Students Above Threshold
						0-10%	11-20%	21-30%	31-40%	41-50%	51-60%	61-70%	71-80%	81-90%	91-100%	
1	Internal Exam	F	60	39.07	50	0	0	0	1	3	7	36	9	0	0	54
2	External Exam	S	40	26.91	50	0	0	0	0	1	10	29	16	0	0	56

CO Indirect Attainment

Course Exit Feedback MSW Sem 2

Q1	Were you able to understand the role of a professional social worker and the importance of teamwork in fieldwork settings?
Scale	Strongly Agree <input type="radio"/> Agree <input type="radio"/> Disagree <input type="radio"/>
Q2	Were you able to apply the ability to mobilize resources and effectively organize programs for the target communities?
Scale	Strongly Agree <input type="radio"/> Agree <input type="radio"/> Disagree <input type="radio"/>
Q3	Were you able to analyze the documentation and administrative processes involved in fieldwork and their impact on social service organizations?
Scale	Strongly Agree <input type="radio"/> Agree <input type="radio"/> Disagree <input type="radio"/>
Q4	Were you able to evaluate personal growth and professional development through self-awareness and reflective documentation of fieldwork experiences?
Scale	Strongly Agree <input type="radio"/> Agree <input type="radio"/> Disagree <input type="radio"/>

CO Attainment

CO	Direct Attainment	Indirect Attainment	Final Attainment	Target	Gap	Justification
CO1	3	1	2.6	2.28	0.32	-
CO2	3	2	2.8	2.85	-0.05	-
CO3	3	3	3	2.28	0.72	-
CO4	3	1	2.6	2.14	0.46	-

Average CO Attainment : 2.75

PO Direct Attainment

Weighted Average Matrix

POs	PO1	PO2	PO3	PO4	PO5	PO6	PO7
Weighted Avg	2.5	2.25	2.5	2	2.75	2.5	2.25

Average CO Attainment : 2.75

POs	PO1	PO2	PO3	PO4	PO5	PO6	PO7
Calculation	2.5 (2.75)/ 3	2.25 (2.75)/ 3	2.5 (2.75)/ 3	2 (2.75)/ 3	2.75 (2.75)/ 3	2.5 (2.75)/ 3	2.25 (2.75)/ 3
Direct Attainment	2.29	2.06	2.29	1.83	2.52	2.29	2.06

COURSE OVERVIEW | MSW



Marginalisation and Social Inclusion

Course Overview

Program Outcomes

PO1

Graduates will develop a critical and interdisciplinary understanding of social structures, inequalities, and systemic challenges, enabling them to design and implement effective social work interventions.

PO2

They will apply advanced social work theories, frameworks, and evidence-based practices to engage with individuals, families, groups, and communities at micro, meso, and macro levels.

PO3

Graduates will demonstrate professional competencies in clinical social work, community organization, policy advocacy, and participatory development, addressing diverse social issues.

PO4

They will uphold ethical principles, social justice, and human rights in their professional practice, ensuring dignity, inclusivity, and accountability in all interventions.

PO5

Graduates will integrate research methodologies, policy analysis, and program evaluation to enhance the effectiveness of social work interventions and contribute to knowledge production in the field.

PO6

They will critically assess and influence social policies, welfare programs, and governance structures to advocate for legislative reforms and rights-based approaches for marginalized communities.

PO7

Graduates will develop leadership, entrepreneurial, and management skills to design, implement, and sustain social initiatives, working collaboratively with multidisciplinary teams and stakeholders.

Course Outcomes

- | | |
|-----|---|
| CO1 | To remember the key concepts, theories, and factors responsible for social exclusion and marginalization at the national and international levels. |
| CO2 | To understand the disparities and discriminations based on social constructs such as caste, religion, gender, and ethnicity, and their impact on marginalized communities |
| CO3 | To apply knowledge of policies, legislations, and affirmative actions to address social exclusion and promote inclusive development. |
| CO4 | To evaluate the role of people-centered rights-based organizations, social movements, and advocacy strategies in addressing marginalization and fostering social inclusion. |

CO-PO Mapping

courseOutcomes	PO1	PO2	PO3	PO4	PO5	PO6	PO7	Average
CODSE 405.1	3	1	2	2	1	2	2	1.85
CODSE 405.2	3	1	2	2	2	2	2	2
CODSE 405.3	2	2	3	2	2	3	3	2.42
CODSE 405.4	3	2	2	3	3	3	3	2.71
Average	2.75	1.5	2.25	2.25	2	2.5	2.5	-

CO Attainment Weightages

Direct Attainment	Indirect Attainment
80 %	20 %

CO Assessment Weightages

Formative (CIE)	Summative (SEE)
40 %	60 %

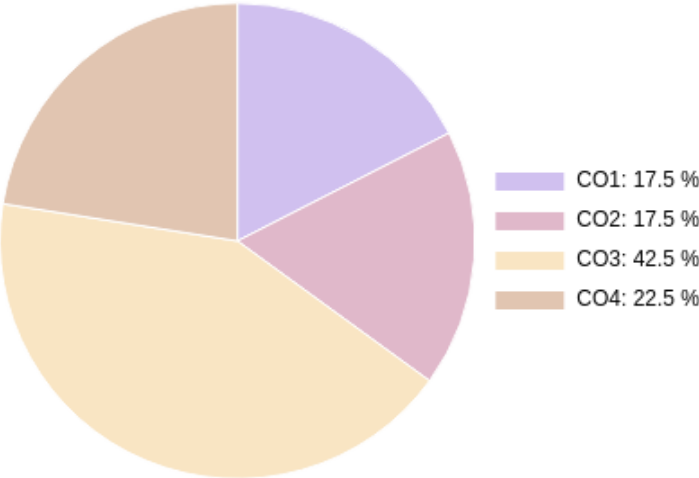
CO targets & Attainment Levels

CO	Target	Direct Attainment levels			Indirect Attainment levels		
		Level 1	Level 2	Level 3	Level 1	Level 2	Level 3
CO1	1.85	0 - 40	41 - 50	51 - 100	0 - 40	41 - 50	51 - 100
CO2	2	0 - 40	41 - 50	51 - 100	0 - 40	41 - 50	51 - 100
CO3	2.42	0 - 40	41 - 50	51 - 100	0 - 40	41 - 50	51 - 100
CO4	2.71	0 - 40	41 - 50	51 - 100	0 - 40	41 - 50	51 - 100

Exam Results

Exam Name	Threshold
Unit 1	50%
Unit 2	50%
Unit 4	50%
Unit 3	50%
External Exam	50%

CO Coverage



COs	CO1	CO2	CO3	CO4
100	17.5	17.5	42.5	22.5
%	17.5	17.5	42.5	22.5

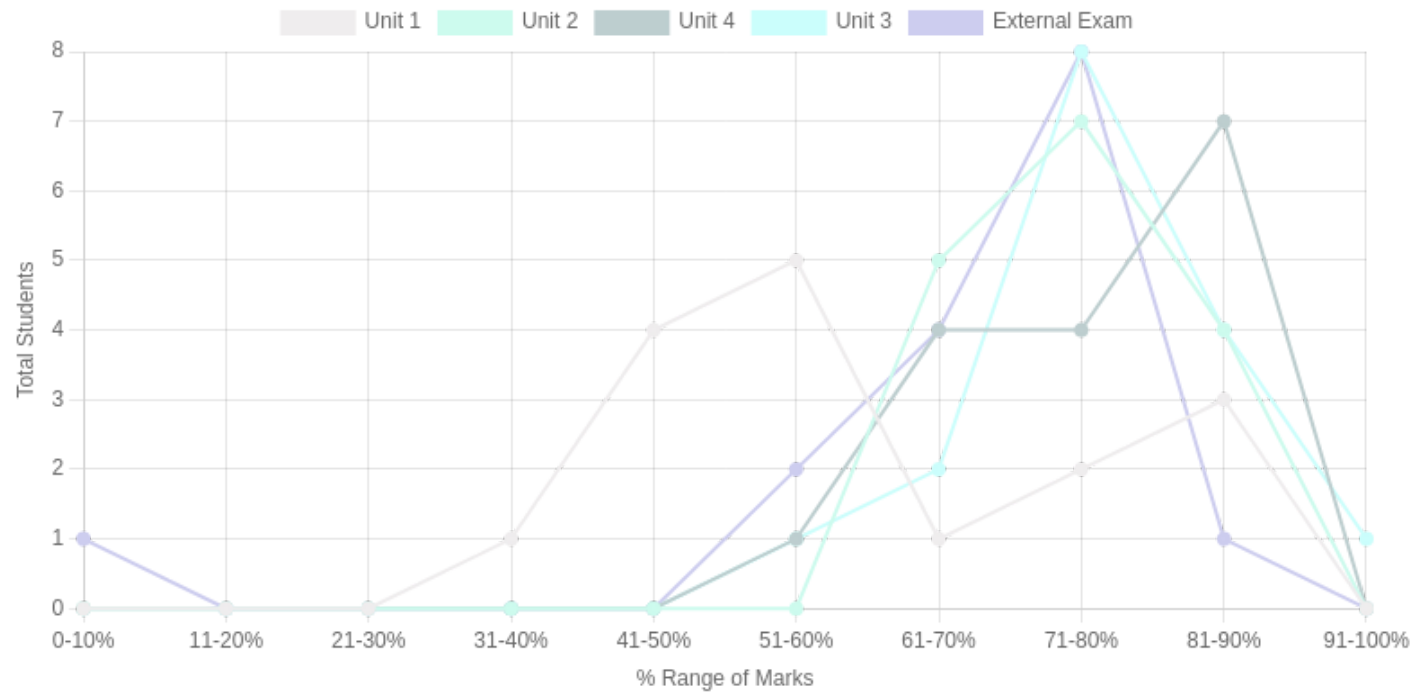
Formative (CIE) Assessments

Sr No	Exam Name	Total Marks	Threshold in %	CO1	CO2	CO3	CO4	CO5	CO6	Avg Attainment
1	Unit 1	10	50	3	3	-	-	-	-	3
2	Unit 2	15	50	-	-	3	-	-	-	3
3	Unit 4	10	50	-	-	-	3	-	-	3
4	Unit 3	15	50	-	-	3	-	-	-	3

Summative (SEE) Assessments

Sr No	Exam Name	Total Marks	Threshold in %	CO1	CO2	CO3	CO4	CO5	CO6	Avg Attainment
5	External Exam	50	50	3	3	3	3	-	-	3

Student % wise Distribution



Sr No	Assessment Title	Type	Total Marks	Avg Marks	Threshold in %	No of Students Scoring										Total Students Above Threshold
						0-10%	11-20%	21-30%	31-40%	41-50%	51-60%	61-70%	71-80%	81-90%	91-100%	
1	Unit 1	F	10	6.21	50	0	0	0	1	4	5	1	2	3	0	14
2	Unit 2	F	15	11.46	50	0	0	0	0	0	0	5	7	4	0	16
3	Unit 4	F	10	7.75	50	0	0	0	0	0	1	4	4	7	0	16
4	Unit 3	F	15	11.78	50	0	0	0	0	0	1	2	8	4	1	16
5	External Exam	S	50	33.9	50	1	0	0	0	0	2	4	8	1	0	15

CO Indirect Attainment

Course Exit Feedback MSW Sem 2

Q1	Were you able to remember the key concepts, theories, and factors responsible for social exclusion and marginalization at the national and international levels?
Scale	Strongly Agree <input type="radio"/> Agree <input type="radio"/> Disagree <input type="radio"/>
Q2	Were you able to understand the disparities and discriminations based on social constructs such as caste, religion, gender, and ethnicity, and their impact on marginalized communities?
Scale	Strongly Agree <input type="radio"/> Agree <input type="radio"/> Disagree <input type="radio"/>
Q3	Were you able to apply knowledge of policies, legislations, and affirmative actions to address social exclusion and promote inclusive development?
Scale	Strongly Agree <input type="radio"/> Agree <input type="radio"/> Disagree <input type="radio"/>
Q4	Were you able to evaluate the role of people-centered rights-based organizations, social movements, and advocacy strategies in addressing marginalization and fostering social inclusion?
Scale	Strongly Agree <input type="radio"/> Agree <input type="radio"/> Disagree <input type="radio"/>

CO Attainment

CO	Direct Attainment	Indirect Attainment	Final Attainment	Target	Gap	Justification
CO1	3	3	3	1.85	1.14	-
CO2	3	3	3	2	1	-
CO3	3	3	3	2.42	0.58	-
CO4	3	3	3	2.71	0.29	-

Average CO Attainment : 3

PO Direct Attainment

Weighted Average Matrix

POs	PO1	PO2	PO3	PO4	PO5	PO6	PO7
Weighted Avg	2.75	1.5	2.25	2.25	2	2.5	2.5

Average CO Attainment : 3

POs	PO1	PO2	PO3	PO4	PO5	PO6	PO7
Calculation	2.75 (3)/ 3	1.5 (3)/ 3	2.25 (3)/ 3	2.25 (3)/ 3	2 (3)/ 3	2.5 (3)/ 3	2.5 (3)/ 3
Direct Attainment	2.75	1.50	2.25	2.25	2.00	2.50	2.50

COURSE OVERVIEW | MSW



Mental Health Practice

Course Overview

Program Outcomes

PO1

Graduates will develop a critical and interdisciplinary understanding of social structures, inequalities, and systemic challenges, enabling them to design and implement effective social work interventions.

PO2

They will apply advanced social work theories, frameworks, and evidence-based practices to engage with individuals, families, groups, and communities at micro, meso, and macro levels.

PO3

Graduates will demonstrate professional competencies in clinical social work, community organization, policy advocacy, and participatory development, addressing diverse social issues.

PO4

They will uphold ethical principles, social justice, and human rights in their professional practice, ensuring dignity, inclusivity, and accountability in all interventions.

PO5

Graduates will integrate research methodologies, policy analysis, and program evaluation to enhance the effectiveness of social work interventions and contribute to knowledge production in the field.

PO6

They will critically assess and influence social policies, welfare programs, and governance structures to advocate for legislative reforms and rights-based approaches for marginalized communities.

PO7

Graduates will develop leadership, entrepreneurial, and management skills to design, implement, and sustain social initiatives, working collaboratively with multidisciplinary teams and stakeholders.

Course Outcomes

CO1

to apply knowledge, skills, and techniques such as intake assessment, conducting community mental health programs, facilitating mental health services, and making referrals for persons with mental health issues

CO2

to analyze the history, concepts, and social determinants of mental health as a framework for intervention, developing a rights-based perspective

CO3

to evaluate the planning, implementation, and periodic assessment of the recovery and reintegration of individuals with mental health disorders

CO4

to create and function within a multidisciplinary team with self-awareness, compassion, and competence in the field of mental health

CO-PO Mapping

courseOutcomes	PO1	PO2	PO3	PO4	PO5	PO6	PO7	Average
CODSE 404.1	3	2	3	2	3	3	3	2.71
CODSE 404.2	3	1	3	2	2	2	2	2.14
CODSE 404.3	2	2	3	3	3	3	3	2.71
CODSE 404.4	2	2	3	2	3	3	3	2.57
Average	2.5	1.75	3	2.25	2.75	2.75	2.75	-

CO Attainment Weightages

Direct Attainment	Indirect Attainment
80 %	20 %

CO Assessment Weightages

Formative (CIE)	Summative (SEE)
40 %	60 %

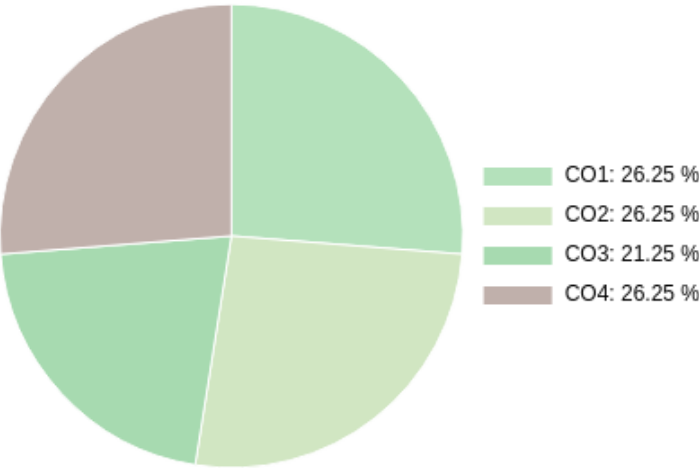
CO targets & Attainment Levels

CO	Target	Direct Attainment levels			Indirect Attainment levels		
		Level 1	Level 2	Level 3	Level 1	Level 2	Level 3
CO1	2.71	0 - 40	41 - 50	51 - 100	0 - 40	41 - 50	51 - 100
CO2	2.14	0 - 40	41 - 50	51 - 100	0 - 40	41 - 50	51 - 100
CO3	2.71	0 - 40	41 - 50	51 - 100	0 - 40	41 - 50	51 - 100
CO4	2.57	0 - 40	41 - 50	51 - 100	0 - 40	41 - 50	51 - 100

Exam Results

Exam Name	Threshold
Unit 1	50%
Unit 2	50%
Unit 4	50%
Unit 3	50%
External Exam	50%

CO Coverage



COs	CO1	CO2	CO3	CO4
100	26.3	26.3	26.3	21.3
%	26.3	26.3	26.3	21.3

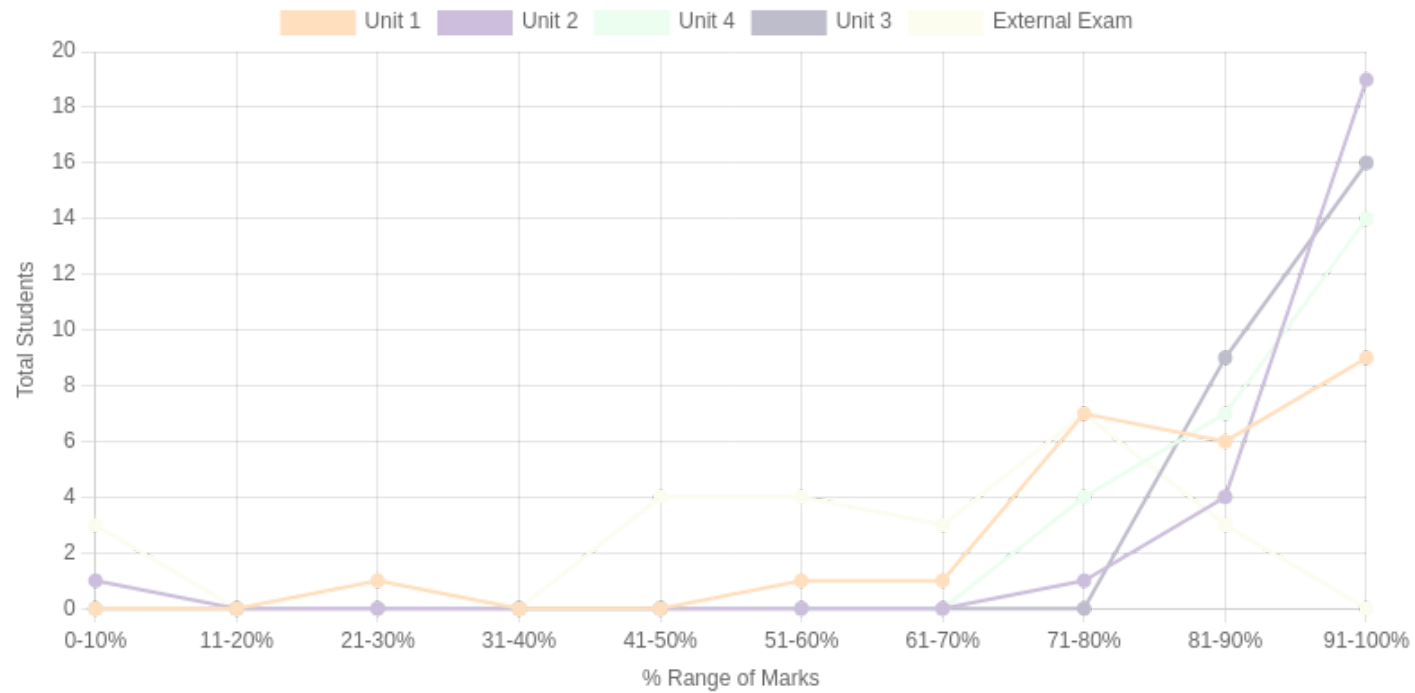
Formative (CIE) Assessments

Sr No	Exam Name	Total Marks	Threshold in %	CO1	CO2	CO3	CO4	CO5	CO6	Avg Attainment
1	Unit 1	15	50	3	3	3	3	-	-	3
2	Unit 2	15	50	3	3	3	-	-	-	3
3	Unit 4	10	50	3	3	3	3	-	-	3
4	Unit 3	10	50	3	3	3	3	-	-	3

Summative (SEE) Assessments

Sr No	Exam Name	Total Marks	Threshold in %	CO1	CO2	CO3	CO4	CO5	CO6	Avg Attainment
5	External Exam	50	50	3	3	2.5	3	-	-	2.87

Student % wise Distribution



Sr No	Assessment Title	Type	Total Marks	Avg Marks	Threshold in %	No of Students Scoring										Total Students Above Threshold
						0-10%	11-20%	21-30%	31-40%	41-50%	51-60%	61-70%	71-80%	81-90%	91-100%	
1	Unit 1	F	15	12.5	50	0	0	1	0	0	1	1	7	6	9	24
2	Unit 2	F	15	13.72	50	1	0	0	0	0	0	0	1	4	19	24
3	Unit 4	F	10	9.4	50	0	0	0	0	0	0	0	4	7	14	25
4	Unit 3	F	10	9.53	50	0	0	0	0	0	0	0	0	9	16	25
5	External Exam	S	50	28	50	3	0	1	0	4	4	3	7	3	0	18

CO Indirect Attainment

Course Exit Feedback MSW Sem 2

Q1	Were you able to apply knowledge, skills, and techniques such as intake assessment, conducting community mental health programs, facilitating mental health services, and making referrals for persons with mental health issues?
Scale	Strongly Agree <input type="radio"/> Agree <input type="radio"/> Disagree <input type="radio"/>
Q2	Were you able to analyze the history, concepts, and social determinants of mental health as a framework for intervention, developing a rights-based perspective?
Scale	Strongly Agree <input type="radio"/> Agree <input type="radio"/> Disagree <input type="radio"/>
Q3	Were you able to evaluate the planning, implementation, and periodic assessment of the recovery and reintegration of individuals with mental health disorders?
Scale	Strongly Agree <input type="radio"/> Agree <input type="radio"/> Disagree <input type="radio"/>
Q4	Were you able to create and function within a multidisciplinary team with self-awareness, compassion, and competence in the field of mental health?
Scale	Strongly Agree <input type="radio"/> Agree <input type="radio"/> Disagree <input type="radio"/>

CO Attainment

CO	Direct Attainment	Indirect Attainment	Final Attainment	Target	Gap	Justification
CO1	3	3	3	2.71	0.29	-
CO2	3	3	3	2.14	0.85	-
CO3	2.7	3	2.76	2.71	0.04	-
CO4	3	3	3	2.57	0.43	-

Average CO Attainment : 2.94

PO Direct Attainment

Weighted Average Matrix

POs	PO1	PO2	PO3	PO4	PO5	PO6	PO7
Weighted Avg	2.5	1.75	3	2.25	2.75	2.75	2.75

Average CO Attainment : 2.94

POs	PO1	PO2	PO3	PO4	PO5	PO6	PO7
Calculation	$2.5 (2.94)/ 3$	$1.75 (2.94)/ 3$	$3 (2.94)/ 3$	$2.25 (2.94)/ 3$	$2.75 (2.94)/ 3$	$2.75 (2.94)/ 3$	$2.75 (2.94)/ 3$
Direct Attainment	2.45	1.71	2.94	2.21	2.69	2.69	2.69

COURSE OVERVIEW | MSW



Research Methodology- II

Course Overview

Program Outcomes

- | | |
|-----|---|
| PO1 | Graduates will develop a critical and interdisciplinary understanding of social structures, inequalities, and systemic challenges, enabling them to design and implement effective social work interventions. |
| PO2 | They will apply advanced social work theories, frameworks, and evidence-based practices to engage with individuals, families, groups, and communities at micro, meso, and macro levels. |
| PO3 | Graduates will demonstrate professional competencies in clinical social work, community organization, policy advocacy, and participatory development, addressing diverse social issues. |
| PO4 | They will uphold ethical principles, social justice, and human rights in their professional practice, ensuring dignity, inclusivity, and accountability in all interventions. |
| PO5 | Graduates will integrate research methodologies, policy analysis, and program evaluation to enhance the effectiveness of social work interventions and contribute to knowledge production in the field. |
| PO6 | They will critically assess and influence social policies, welfare programs, and governance structures to advocate for legislative reforms and rights-based approaches for marginalized communities. |
| PO7 | Graduates will develop leadership, entrepreneurial, and management skills to design, implement, and sustain social initiatives, working collaboratively with multidisciplinary teams and stakeholders. |

Course Outcomes

CO1 To remember fundamental concepts of data analysis, descriptive and inferential statistics, and ethical research reporting.

CO2 To understand the features and functions of SPSS for data entry, data manipulation, and statistical analysis.

CO3 To apply SPSS to clean, process, and analyze data, and generate meaningful research insights.

CO4 To analyze the structure, writing style, and ethical considerations of a well-structured research report in social work.

CO-PO Mapping

courseOutcomes	PO1	PO2	PO3	PO4	PO5	PO6	PO7	Average
CORMC 402.1	1	1	2	3	1	2	1	1.57
CORMC 402.2	1	1	2	2	1	2	1	1.42
CORMC 402.3	1	2	3	3	2	3	2	2.28
CORMC 402.4	2	1	2	3	2	3	2	2.14
Average	1.25	1.25	2.25	2.75	1.5	2.5	1.5	-

CO Attainment Weightages

Direct Attainment	Indirect Attainment
80 %	20 %

CO Assessment Weightages

Formative (CIE)	Summative (SEE)
40 %	60 %

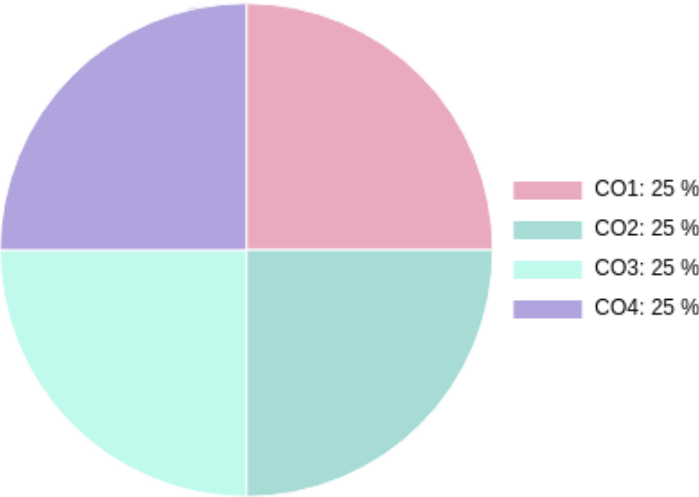
CO targets & Attainment Levels

CO	Target	Direct Attainment levels			Indirect Attainment levels		
		Level 1	Level 2	Level 3	Level 1	Level 2	Level 3
CO1	1.57	0 - 40	41 - 50	51 - 100	0 - 40	41 - 50	51 - 100
CO2	1.42	0 - 40	41 - 50	51 - 100	0 - 40	41 - 50	51 - 100
CO3	2.28	0 - 40	41 - 50	51 - 100	0 - 40	41 - 50	51 - 100
CO4	2.14	0 - 40	41 - 50	51 - 100	0 - 40	41 - 50	51 - 100

Exam Results

Exam Name	Threshold
External Exam	50%

CO Coverage



COs	CO1	CO2	CO3	CO4
50	12.5	12.5	12.5	12.5
%	25.0	25.0	25.0	25.0

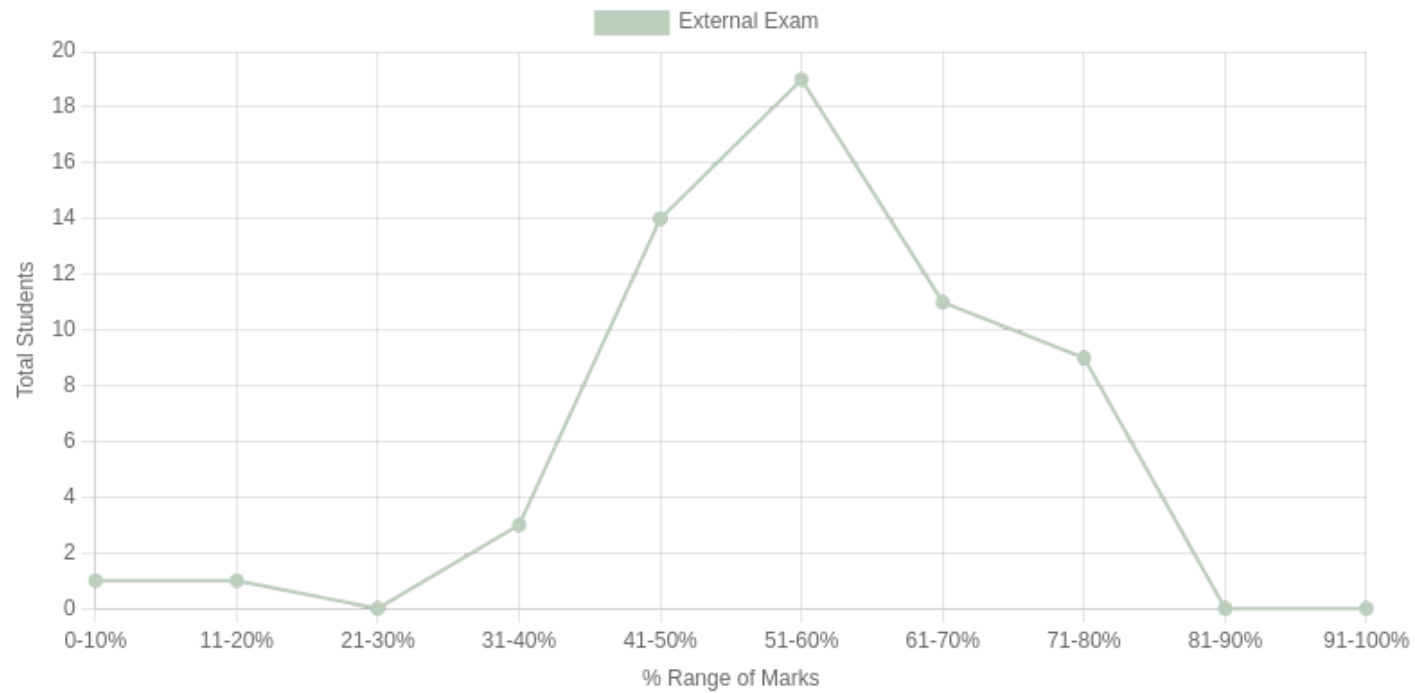
Formative (CIE) Assessments

Sr No	Exam Name	Total Marks	Threshold in %	CO1	CO2	CO3	CO4	CO5	CO6	Avg Attainment
-------	-----------	-------------	----------------	-----	-----	-----	-----	-----	-----	----------------

Summative (SEE) Assessments

Sr No	Exam Name	Total Marks	Threshold in %	CO1	CO2	CO3	CO4	CO5	CO6	Avg Attainment
1	External Exam	50	50	3	3	3	3	-	-	3

Student % wise Distribution



Sr No	Assessment Title	Type	Total Marks	Avg Marks	Threshold in %	No of Students Scoring										Total Students Above Threshold
						0-10%	11-20%	21-30%	31-40%	41-50%	51-60%	61-70%	71-80%	81-90%	91-100%	
1	External Exam	S	50	27.96	50	1	1	0	3	14	19	11	9	0	0	41

CO Indirect Attainment

Course Exit Feedback MSW Sem 2

Q1	Were you able to remember fundamental concepts of data analysis, descriptive and inferential statistics, and ethical research reporting?
Scale	Strongly Agree <input type="radio"/> Agree <input type="radio"/> Disagree <input type="radio"/>
Q2	Were you able to understand the features and functions of SPSS for data entry, data manipulation, and statistical analysis?
Scale	Strongly Agree <input type="radio"/> Agree <input type="radio"/> Disagree <input type="radio"/>
Q3	Were you able to apply SPSS to clean, process, and analyze data, and generate meaningful research insights?
Scale	Strongly Agree <input type="radio"/> Agree <input type="radio"/> Disagree <input type="radio"/>
Q4	Were you able to analyze the structure, writing style, and ethical considerations of a well-structured research report in social work?
Scale	Strongly Agree <input type="radio"/> Agree <input type="radio"/> Disagree <input type="radio"/>

CO Attainment

CO	Direct Attainment	Indirect Attainment	Final Attainment	Target	Gap	Justification
CO1	1.79	3	2.03	1.57	0.45	-
CO2	1.79	3	2.03	1.42	0.6	-

CO	Direct Attainment	Indirect Attainment	Final Attainment	Target	Gap	Justification
CO3	1.79	3	2.03	2.28	-0.25	-
CO4	1.79	3	2.03	2.14	-0.11	-

Average CO Attainment : 2.02

PO Direct Attainment

Weighted Average Matrix

POs	PO1	PO2	PO3	PO4	PO5	PO6	PO7
Weighted Avg	1.25	1.25	2.25	2.75	1.5	2.5	1.5

Average CO Attainment : 2.02

POs	PO1	PO2	PO3	PO4	PO5	PO6	PO7
Calculation	1.25 (2.02)/ 3	1.25 (2.02)/ 3	2.25 (2.02)/ 3	2.75 (2.02)/ 3	1.5 (2.02)/ 3	2.5 (2.02)/ 3	1.5 (2.02)/ 3
Direct Attainment	0.84	0.84	1.51	1.85	1.01	1.68	1.01

COURSE OVERVIEW | MSW



Social Work Practice with Individual and Families

Course Overview

Program Outcomes

- | | |
|-----|---|
| PO1 | Graduates will develop a critical and interdisciplinary understanding of social structures, inequalities, and systemic challenges, enabling them to design and implement effective social work interventions. |
| PO2 | They will apply advanced social work theories, frameworks, and evidence-based practices to engage with individuals, families, groups, and communities at micro, meso, and macro levels. |
| PO3 | Graduates will demonstrate professional competencies in clinical social work, community organization, policy advocacy, and participatory development, addressing diverse social issues. |
| PO4 | They will uphold ethical principles, social justice, and human rights in their professional practice, ensuring dignity, inclusivity, and accountability in all interventions. |
| PO5 | Graduates will integrate research methodologies, policy analysis, and program evaluation to enhance the effectiveness of social work interventions and contribute to knowledge production in the field. |
| PO6 | They will critically assess and influence social policies, welfare programs, and governance structures to advocate for legislative reforms and rights-based approaches for marginalized communities. |
| PO7 | Graduates will develop leadership, entrepreneurial, and management skills to design, implement, and sustain social initiatives, working collaboratively with multidisciplinary teams and stakeholders. |

Course Outcomes

- | | |
|------------|---|
| CO1 | To remember fundamental concepts, principles, and techniques of social work practice with individuals and families. |
| CO2 | To understand the significance of empathy, professional boundaries, and ethical considerations in client relationships. |
| CO3 | To apply assessment tools like genograms and ecomaps to analyze family dynamics and design intervention plans. |
| CO4 | To Evaluate the effectiveness of different intervention models in addressing psychosocial challenges faced by individuals and families. |

CO-PO Mapping

courseOutcomes	PO1	PO2	PO3	PO4	PO5	PO6	PO7	Average
COCC406.1	3	1	2	2	2	2	2	2
COCC406.2	3	1	2	2	2	3	2	2.14
COCC406.3	2	2	3	3	2	3	2	2.42
COCC406.4	2	2	3	3	2	3	3	2.57
Average	2.5	1.5	2.5	2.5	2	2.75	2.25	-

CO Attainment Weightages

Direct Attainment	Indirect Attainment
80 %	20 %

CO Assessment Weightages

Formative (CIE)	Summative (SEE)
40 %	60 %

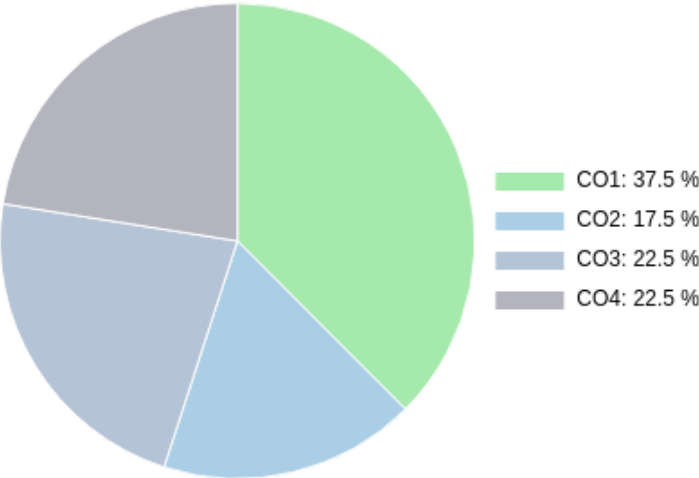
CO targets & Attainment Levels

CO	Target	Direct Attainment levels			Indirect Attainment levels		
		Level 1	Level 2	Level 3	Level 1	Level 2	Level 3
CO1	2	0 - 40	41 - 50	51 - 100	0 - 40	41 - 50	51 - 100
CO2	2.14	0 - 40	41 - 50	51 - 100	0 - 40	41 - 50	51 - 100
CO3	2.42	0 - 40	41 - 50	51 - 100	0 - 40	41 - 50	51 - 100
CO4	2.57	0 - 40	41 - 50	51 - 100	0 - 40	41 - 50	51 - 100

Exam Results

Exam Name	Threshold
Unit 1	50%
Unit 2	50%
Unit 3	50%
External Exam	50%

CO Coverage



COs	CO1	CO2	CO3	CO4
100	17.5	37.5	22.5	22.5
%	17.5	37.5	22.5	22.5

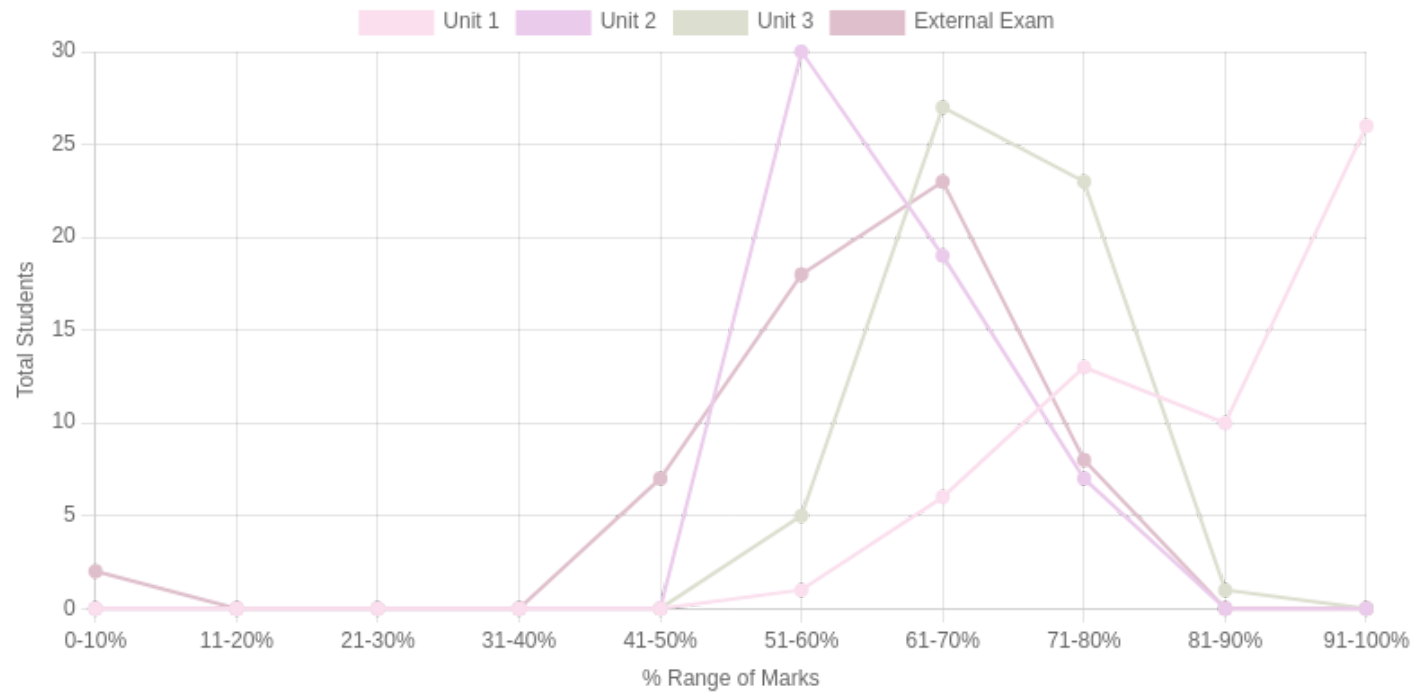
Formative (CIE) Assessments

Sr No	Exam Name	Total Marks	Threshold in %	CO1	CO2	CO3	CO4	CO5	CO6	Avg Attainment
1	Unit 1	10	50	3	3	-	-	-	-	3
2	Unit 2	20	50	-	3	-	-	-	-	3
3	Unit 3	20	50	-	-	3	3	-	-	3

Summative (SEE) Assessments

Sr No	Exam Name	Total Marks	Threshold in %	CO1	CO2	CO3	CO4	CO5	CO6	Avg Attainment
4	External Exam	50	50	3	3	3	3	-	-	3

Student % wise Distribution



Sr No	Assessment Title	Type	Total Marks	Avg Marks	Threshold in %	No of Students Scoring										Total Students Above Threshold
						0-10%	11-20%	21-30%	31-40%	41-50%	51-60%	61-70%	71-80%	81-90%	91-100%	
1	Unit 1	F	10	8.96	50	0	0	0	0	0	1	6	13	10	26	56
2	Unit 2	F	20	12.67	50	0	0	0	0	0	30	19	7	0	0	56
3	Unit 3	F	20	14.3	50	0	0	0	0	0	5	27	23	1	0	56
4	External Exam	S	50	29.64	50	2	0	0	0	7	18	23	8	0	0	51

CO Indirect Attainment

Course Exit Feedback MSW Sem 2

Q1	Were you able to remember fundamental concepts, principles, and techniques of social work practice with individuals and families?
Scale	Strongly Agree <input type="radio"/> Agree <input type="radio"/> Disagree <input type="radio"/>
Q2	Were you able to understand the significance of empathy, professional boundaries, and ethical considerations in client relationships?
Scale	Strongly Agree <input type="radio"/> Agree <input type="radio"/> Disagree <input type="radio"/>
Q3	Were you able to apply assessment tools like genograms and ecomaps to analyze family dynamics and design intervention plans?
Scale	Strongly Agree <input type="radio"/> Agree <input type="radio"/> Disagree <input type="radio"/>
Q4	Were you able to evaluate the effectiveness of different intervention models in addressing psychosocial challenges faced by individuals and families?
Scale	Strongly Agree <input type="radio"/> Agree <input type="radio"/> Disagree <input type="radio"/>

CO Attainment

CO	Direct Attainment	Indirect Attainment	Final Attainment	Target	Gap	Justification
CO1	3	2	2.8	2	0.79	-
CO2	3	2	2.8	2.14	0.65	-
CO3	3	3	3	2.42	0.58	-
CO4	3	3	3	2.57	0.43	-

Average CO Attainment : 2.9

PO Direct Attainment

Weighted Average Matrix

POs	PO1	PO2	PO3	PO4	PO5	PO6	PO7
Weighted Avg	2.5	1.5	2.5	2.5	2	2.75	2.25

Average CO Attainment : 2.9

POs	PO1	PO2	PO3	PO4	PO5	PO6	PO7
Calculation	2.5 (2.9)/ 3	1.5 (2.9)/ 3	2.5 (2.9)/ 3	2.5 (2.9)/ 3	2 (2.9)/ 3	2.75 (2.9)/ 3	2.25 (2.9)/ 3
Direct Attainment	2.42	1.45	2.42	2.42	1.93	2.66	2.17

COURSE OVERVIEW | MSW