



NIRF ranking in the band of 101 to 150 in the year 2025

NAAC Re-Accredited "A" Grade (3rd Cycle)
with CGPA 3.53 on a Scale of 4 in 2015; and
awarded Autonomy Status by UGC in 2019



College of Social Work (Empowered Autonomous) Nirmala Niketan

**ACADEMIC YEAR
2025- 2026**

**OUTCOME BASED
EDUCATION REPORT
MSW I I**



Administration in Social Work

MSW

Sem - 3

1. Course Overview

The **Administration in Social Work** course is offered to **second-year MSW students** to develop knowledge and skills related to the **governance, management, and administration of social welfare organizations**. The course equips students to handle **human resources, finance, fundraising, project management, CSR, and social entrepreneurship**, thereby preparing them for leadership roles beyond traditional non-profit settings.

The course outcomes focus on governance and legal frameworks, nonprofit management practices, project management cycles, and emerging roles of social workers in CSR and social enterprises. The **average Course Outcome (CO) attainment is 2.83**, indicating **very good achievement** of learning outcomes.

2. Purpose of the Course Overview Report

The purpose of this report is to:

- Measure the **achievement of course outcomes**
- Evaluate the effectiveness of **formative and summative assessment methods**
- Ensure alignment between **Course Outcomes (COs) and Program Outcomes (POs)**
- Identify academic strengths and gaps
- Support **continuous improvement in professional social work education**

3. Gap Analysis

The gap analysis compares **target attainment levels** with **final CO attainment**.

Key Observations:

- All course outcomes (**CO1 to CO4**) have **exceeded their target levels**, showing effective course delivery.
- **CO2 and CO4 show the highest positive gaps**, reflecting strong student competence in nonprofit management, CSR, and social entrepreneurship concepts.
- **CO3 shows a small gap (0.33)**, indicating slight difficulty in applying project management concepts in the external examination.
- External examination performance is comparatively lower than formative assessments, suggesting the need for better **exam-oriented preparation**.
- PO attainment is moderate, as the course focuses primarily on **administrative and managerial competencies** rather than policy advocacy or governance reform.

Overall Gap Status:

The identified gaps are **minor and manageable**, with no critical learning deficiencies.

4. Areas for Improvement / Action Plan

To further strengthen learning outcomes:

- Provide more **exam-oriented application questions** on project management
- Include **case studies** on real-world nonprofit administration
- Strengthen **revision sessions** before summative assessments
- Introduce **simulation exercises** related to budgeting, HR, and CSR planning

These actions will help balance strong practical learning with improved exam performance.

5. Summary and Conclusion

The **Administration in Social Work** course is well-structured and effectively delivered, with strong alignment to program outcomes related to **organizational management, leadership, and professional competence**. All course outcomes have been achieved beyond their target levels, indicating meaningful and practice-oriented student learning. The minor gaps identified provide clear direction for focused academic enhancement.

Overall, the course plays a key role in preparing **administratively competent, leadership-ready, and socially responsible social work professionals**.

Counselling Intervention

MSW

Sem - 3

1. Course Overview

The **Counselling Intervention** course is offered to **second-year MSW students** to develop professional competence in **counselling theories, intervention techniques, ethical practice, and culturally sensitive client engagement**. The course prepares students to apply counselling skills in **health and social work settings**, while upholding ethical standards and human dignity.

The course outcomes focus on comparing counselling models, applying counselling interventions, following ethical protocols, and demonstrating sensitivity toward diverse clients. The **average Course Outcome (CO) attainment is 2.92**, indicating **very strong achievement** of learning outcomes.

2. Purpose of the Course Overview Report

The purpose of this report is to:

- Evaluate the **extent of achievement of course outcomes**
- Assess the effectiveness of **experiential and skill-based teaching methods**
- Ensure alignment between **Course Outcomes (COs) and Program Outcomes (POs)**

- Identify strengths and learning gaps
- Support **continuous improvement in clinical social work education**

3. Gap Analysis

The gap analysis compares **target attainment levels** with **final CO attainment**.

Key Observations:

- All course outcomes (**CO1 to CO4**) have **exceeded their target levels**, indicating effective teaching–learning processes.
- **CO1 shows the highest positive gap (+1)**, reflecting excellent understanding of counselling approaches and models.
- **CO2 shows a smaller positive gap (+0.43)** due to relatively lower performance in the external examination, indicating scope for further strengthening applied intervention skills under exam conditions.
- Indirect attainment is reported as Level 3 for all COs; however, **student feedback responses were not received**, suggesting a need to improve feedback collection mechanisms.

Overall Gap Status:

No critical learning gaps are identified; all gaps are **positive or minor**.

4. Areas for Improvement / Action Plan

To further enhance the course:

- Strengthen **exam-oriented practice** for applied counselling scenarios
- Improve **student feedback participation** for indirect attainment
- Introduce **more simulated counselling sessions** and case-based discussions
- Reinforce **ethical decision-making** through scenario analysis

These measures will help sustain high attainment and strengthen applied competencies.

5. Summary and Conclusion

The **Counselling Intervention** course is well-designed and effectively delivered, with strong alignment to program outcomes related to **clinical competence, ethical practice, and culturally sensitive interventions**. All course outcomes have been achieved beyond the targeted levels, demonstrating high-quality student learning. Minor procedural gaps identified offer clear opportunities for further enhancement.

Overall, the course plays a vital role in preparing **competent, ethical, and client-centered professional social workers**.

Research Project

MSW

Sem - 3

1. Course Overview

The course **Research Project (RP 501)** is offered to **second-year MSW students** to develop research competence and analytical skills essential for professional social work practice. The course aligns with the institution's vision of **human dignity and social justice** by promoting evidence-based and ethical research.

The **Course Outcomes (COs)** focus on identifying relevant research problems, conducting literature reviews, formulating objectives, selecting appropriate research designs, and developing data collection tools. The **CO-PO mapping** shows strong alignment with program outcomes related to **research integration, policy analysis, professional competence, and ethical practice**.

The overall **average CO attainment of 2.84** indicates good achievement of learning outcomes through **direct assessment (80%)** and **indirect assessment (20%)**.

2. Purpose of the Course Overview Report

The purpose of this course overview report is to:

- Assess the effectiveness of research-oriented teaching

- Measure attainment of research-related course outcomes
- Ensure alignment between course outcomes and program outcomes
- Identify strengths and minor gaps in research skills
- Support academic quality assurance and continuous improvement

3. Gap Analysis

The gap analysis compares **target attainment levels** with **actual student attainment**.

Key Observations:

- **CO1 to CO4** have achieved attainment levels above their targets, indicating strong performance in research planning, literature review, and research design.
- **CO5** shows a minor gap due to **zero indirect attainment**, suggesting limited student feedback or confidence in developing data collection tools.
- Program outcomes related to **research and policy application (PO5 and PO6)** show higher attainment compared to others.

Overall Gap Status:

The identified gap is minimal and does not significantly affect overall course effectiveness.

4. Areas for Improvement / Action Plan

To address the identified gap and strengthen research learning:

- Provide additional guidance on tool construction and validation
- Encourage reflective feedback on research experience
- Conduct workshops on questionnaire and interview schedule design

- Strengthen indirect assessment through structured student feedback

These steps will improve practical research skills and CO5 attainment.

5. Summary and Conclusion

The **Research Project** course is well-structured and effectively delivered, with most course outcomes achieved beyond the target levels. Minor gaps identified offer clear scope for improvement.

Overall, the course significantly contributes to developing **research competency, analytical thinking, and evidence-based practice** among MSW students, supporting professional and academic excellence.

Social Policy in Development Context

MSW

Sem - 5

1. Course Overview

The course **Social Policy in Development Context (CC 501)** is offered to **second-year MSW students** to develop an understanding of welfare policies, social policy frameworks, and the role of social workers in policy analysis and advocacy. The course aligns with the institution's vision of **human dignity, social justice, and rights-based development**.

The **Course Outcomes (COs)** focus on understanding the evolution of social policy, theoretical foundations, policy planning processes in India, and the role of social workers in policy advocacy. The **CO-PO mapping** shows good alignment with program outcomes related to **policy analysis, ethical practice, research integration, and professional competence**.

The overall **average CO attainment of 2.86** reflects satisfactory achievement of learning outcomes through **direct (80%) and indirect (20%) assessment methods**.

2. Purpose of the Course Overview Report

The purpose of this course overview report is to:

- Assess the effectiveness of course delivery and assessments
- Measure attainment of social policy–related course outcomes
- Ensure alignment between course outcomes and program outcomes
- Identify strengths and improvement areas
- Support academic quality assurance and continuous improvement

3. Gap Analysis

The gap analysis compares **target attainment levels** with **actual student attainment**.

Key Observations:

- **CO2, CO3, and CO4** have achieved attainment levels above the targets, indicating strong understanding of policy concepts, planning processes, and advocacy roles.
- **CO1** shows a minor gap, suggesting the need for deeper conceptual clarity on the historical evolution of welfare and social policy.
- Program outcomes related to **policy analysis and governance (PO5 and PO6)** show relatively better attainment compared to others.

Overall Gap Status:

The gaps identified are minor and do not significantly affect overall course effectiveness.

4. Areas for Improvement / Action Plan

To further strengthen learning outcomes, the following steps are recommended:

- Use more case studies on Indian social policies
- Encourage critical classroom discussions on policy evolution

- Integrate policy review and analysis assignments
- Strengthen conceptual reinforcement through revision sessions

These actions will improve conceptual clarity and application skills.

5. Summary and Conclusion

The **Social Policy in Development Context** course is well-designed and effectively delivered, with most course outcomes achieved beyond target levels. Minor gaps identified provide clear directions for improvement.

Overall, the course contributes significantly to developing **policy understanding, analytical skills, and advocacy orientation** among MSW students, supporting professional social work practice.

Social Work with Older Adults

MSW

Sem - 5

1. Course Overview

The **Social Work with Older Adults** course is offered to **second-year MSW students** to develop a comprehensive understanding of **ageing, geriatric issues, and professional social work interventions with older persons**. The course integrates biological, psychological, social, and policy perspectives and emphasizes **rights-based, anti-oppressive, and strengths-based practice** with older adults and their families.

The course outcomes focus on understanding ageing processes, analyzing policies and legislation, applying geriatric social work perspectives, and developing skills in case management, advocacy, and community care. The **average Course Outcome (CO) attainment is 2.64**, indicating **good overall achievement** of learning outcomes.

2. Purpose of the Course Overview Report

The purpose of this report is to:

- Evaluate the **achievement of course outcomes**
- Assess the effectiveness of **theory–practice integrated teaching methods**
- Ensure alignment between **Course Outcomes (COs) and Program Outcomes (POs)**
- Identify academic strengths and learning gaps
- Support **continuous improvement** in geriatric social work education

3. Gap Analysis

The gap analysis compares **target CO levels** with **final attainment**.

Key Observations:

- All course outcomes (**CO1 to CO4**) have **exceeded their target levels**, indicating effective course delivery.
- **CO1 and CO3 show higher positive gaps (+0.43)**, reflecting strong understanding of ageing issues and geriatric practice perspectives.
- **CO4 shows a smaller positive gap (+0.18)**, suggesting comparatively lower performance in applying advanced intervention skills under examination conditions.
- Indirect attainment is reported as **Level 3 for all COs**, though **student feedback responses were not received**, indicating a procedural gap in feedback collection.
- At the PO level, **PO6 shows higher attainment**, while other POs show moderate attainment due to the course's focus on direct practice rather than leadership and policy reform.

Overall Gap Status:

No critical learning gaps are identified; gaps are **minor and mostly positive**.

4. Areas for Improvement / Action Plan

To further strengthen the course:

- Improve **student participation in course feedback** for indirect assessment
- Include more **case-based exercises** on complex geriatric interventions
- Strengthen **exam-oriented application practice** for policy and advocacy questions
- Integrate **field-linked examples** from geriatric care settings

These actions will help enhance applied learning and assessment completeness.

5. Summary and Conclusion

The **Social Work with Older Adults** course is well-structured and effectively delivered, with strong alignment to program outcomes related to **ethical practice, social justice, and professional competence**. All course outcomes have been achieved beyond the targeted levels, indicating meaningful student learning. The minor procedural gap identified provides clear direction for improvement in feedback mechanisms.

Overall, the course plays an important role in preparing **competent, sensitive, and rights-oriented social work professionals** to work with the ageing population.

Sustainable Development and Environment

MSW

Sem - 5

1. Course Overview

The **Sustainable Development and Environment** course is offered to **second-year MSW students** to develop a strong understanding of **sustainable development concepts, environmental concerns, and development dynamics** at local, national,

and global levels. The course emphasizes **critical analysis of development practices** and formulation of strategies that promote sustainability and social justice.

The course outcomes focus on understanding sustainable development frameworks, analyzing rural–urban development dynamics, applying global best practices, and designing strategies for sustainable development. The **average Course Outcome (CO) attainment is 2.88**, indicating **very good overall achievement** of learning outcomes.

2. Purpose of the Course Overview Report

The purpose of this report is to:

- Evaluate the **achievement of course outcomes**
- Assess the effectiveness of **teaching–learning and assessment methods**
- Ensure alignment between **Course Outcomes (COs) and Program Outcomes (POs)**
- Identify academic strengths and learning gaps
- Support **continuous quality improvement** in curriculum implementation

3. Gap Analysis

The gap analysis compares **target CO attainment levels** with **final attainment**.

Key Observations:

- All course outcomes (**CO1 to CO4**) have **exceeded their target levels**, indicating effective course delivery.
- **CO2 and CO3 show the highest positive gaps (+0.75)**, reflecting strong analytical and application skills in development practices.
- **CO4 shows a moderate positive gap (+0.58)**, suggesting good ability to design sustainability strategies.

- Slightly lower performance in **CO1 during the external examination** indicates the need for further strengthening of foundational concepts under exam conditions.
- Indirect attainment is reported as **Level 3 for all COs**, though **student feedback responses were not received**, indicating a procedural gap in feedback collection.
- At the PO level, **PO4 shows zero attainment**, as ethics and human rights are not directly assessed in this course.

Overall Gap Status:

No critical learning gaps are observed; gaps are **positive and minor**.

4. Areas for Improvement / Action Plan

To further strengthen the course:

- Reinforce **foundational concepts of sustainable development** through revision sessions
- Improve **exam-oriented conceptual clarity** for CO1
- Strengthen **student feedback mechanisms** for indirect attainment
- Integrate **field-based sustainability projects** and policy case studies

These actions will enhance conceptual understanding and assessment completeness.

5. Summary and Conclusion

The **Sustainable Development and Environment** course is well-designed and effectively delivered, with strong alignment to program outcomes related to **sustainability, social justice, and participatory development**. All course outcomes have been achieved beyond the target levels, indicating meaningful student learning. The minor procedural gap identified offers clear direction for improving feedback and assessment processes.

Overall, the course plays a key role in preparing **environmentally conscious and development-oriented social work professionals**.

Training and Supervision in Social Work

MSW

Sem - 5

1. Course Overview

The course **Training and Supervision in Social Work (CC 504)** is offered to **second-year MSW students** to develop knowledge and skills related to supervision, training methods, and ethical practice in social work settings. The course aligns with the institution's vision of **human dignity, social justice, and professional competence**.

The **Course Outcomes (COs)** focus on understanding the importance of supervision, resolving ethical dilemmas, developing training curricula, and applying supervision skills in practice situations. The **CO-PO mapping** shows good alignment with program outcomes related to **professional ethics, leadership, training, and practice competence**.

The overall **average CO attainment of 2.95** indicates very good achievement of learning outcomes through **direct (80%) and indirect (20%) assessment methods**.

2. Purpose of the Course Overview Report

The purpose of this course overview report is to:

- Evaluate the effectiveness of teaching and assessment strategies
- Measure attainment of course outcomes
- Ensure alignment between course outcomes and program outcomes
- Identify strengths and areas for enhancement
- Support academic quality assurance and continuous improvement

3. Gap Analysis

The gap analysis compares **target attainment levels** with **actual student attainment**.

Key Observations:

- **All COs (CO1–CO4)** have achieved attainment levels above their targets, indicating strong understanding of supervision, ethics, and training processes.
- **CO1** shows slightly lower indirect attainment, suggesting the need for deeper reflection on supervision practices.
- Program outcome attainment is consistent across professional and ethical domains.

Overall Gap Status:

No major gaps are identified. The course outcomes are achieved satisfactorily.

4. Areas for Improvement / Action Plan

To further strengthen learning outcomes, the following steps are suggested:

- Include more practice-based supervision case studies
- Encourage reflective discussions on ethical dilemmas
- Provide hands-on exposure to training module design
- Strengthen indirect assessment through structured feedback

These measures will enhance practical supervision and training skills.

5. Summary and Conclusion

The **Training and Supervision in Social Work** course is well-designed and effectively delivered, with all course outcomes achieved beyond target levels. Minor scope for improvement exists in reflective understanding of supervision practices.

Overall, the course significantly contributes to developing **supervisory skills, ethical awareness, and professional training competence** among MSW students.

COURSE OVERVIEW

MSW | Batch 2024-2026 | SECOND YEAR 2025-2026



Administration in Social Work

(CC 502)

Course Overview

Vision

To contribute to building a new social order based on human dignity and social justice.

Mission

M1: To work with a preferential option for the vulnerable and exploited, both locally and globally.

M2: To build a cadre of young, competent professionals having a global perspective and a strong value base of compassion, personal integrity, moderation, tolerance and self-respect.

Program Outcome (PO)

Sr. No	PO
1	Graduates will develop a critical and interdisciplinary understanding of social structures, inequalities, and systemic challenges, enabling them to design and implement effective social work interventions.
2	They will apply advanced social work theories, frameworks, and evidence-based practices to engage with individuals, families, groups, and communities at micro, meso, and macro levels.
3	Graduates will demonstrate professional competencies in clinical social work, community organization, policy advocacy, and participatory development, addressing diverse social issues.
4	They will uphold ethical principles, social justice, and human rights in their professional practice, ensuring dignity, inclusivity, and accountability in all interventions.
5	Graduates will integrate research methodologies, policy analysis, and program evaluation to enhance the effectiveness of social work interventions and contribute to knowledge production in the field.
6	They will critically assess and influence social policies, welfare programs, and governance structures to advocate for legislative reforms and rights-based approaches for marginalized communities.
7	Graduates will develop leadership, entrepreneurial, and management skills to design, implement, and sustain social initiatives, working collaboratively with multidisciplinary teams and stakeholders.

Course Outcomes

CO1: Comprehend the governance of social welfare agencies and related legal provisions.

CO2: Apply human resource management, fundraising, communication and financial management in non-profit organisations

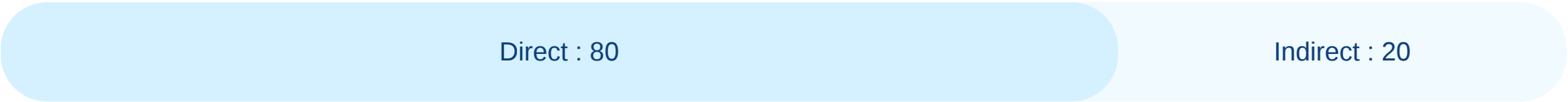
CO3: Deliberate on the project management cycle, i.e Project Design, Implementation, Monitoring, and Evaluation

CO4: Discuss the significance of CSR and Social Entrepreneurship in the context of roles of social workers beyond the traditional non-profit organisations

CO - PO - PSO Mapping

CO / PO / PSO	PO1	PO2	PO3	PO4	PO5	PO6	PO7	Average
CO1	2	-	2	2	-	2	-	2.00
CO2	-	2	2	-	2	-	2	2.00
CO3	-	2	2	-	3	3	-	2.50
CO4	-	-	2	2	-	2	2	2.00
Average	2	2	2	2	2.5	2.33	2	

CO Weightages Based on attainment type



CO targets & Attainment Levels

COs	Target	Direct Attainment levels				Indirect Attainment levels			
		Level 0	Level 1	Level 2	Level 3	Level 0	Level 1	Level 2	Level 3
CO1	2	0 - 1	2 - 40	41 - 50	51 - 100	0 - 1	2 - 40	41 - 50	51 - 100
CO2	2	0 - 1	2 - 40	41 - 50	51 - 100	0 - 1	2 - 40	41 - 50	51 - 100
CO3	2.5	0 - 1	2 - 40	41 - 50	51 - 100	0 - 1	2 - 40	41 - 50	51 - 100
CO4	2	0 - 1	2 - 40	41 - 50	51 - 100	0 - 1	2 - 40	41 - 50	51 - 100

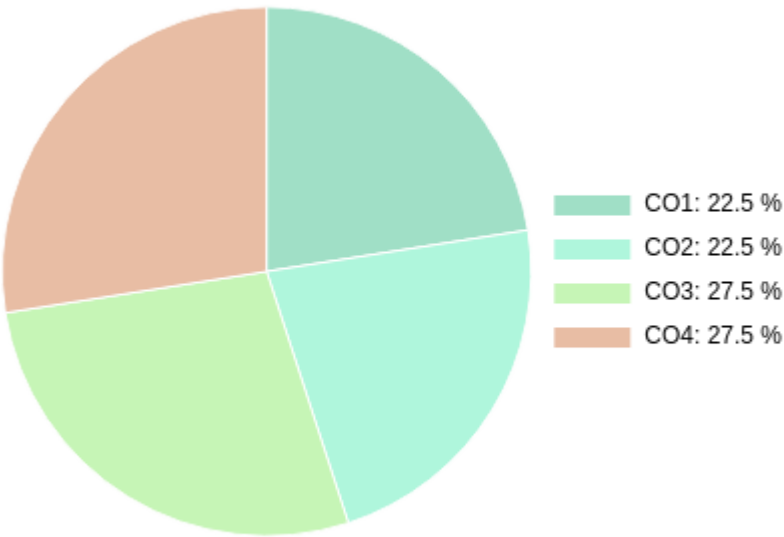
Formative (CIE) Assessments

Sr No	Exam Name	Total Marks	Threshold in %	CO1	CO2	CO3	CO4	Avg Attainment
1	Unit 1/Quiz	10	50	3	3	3	3	3
2	Unit 2/Proposal	20	50	3	3	3	3	3
3	Unit 3/JD	10	50	3	3	3	3	3
4	Unit 4/Pitch	10	50	3	3	3	3	3

Summative (SEE) Assessments

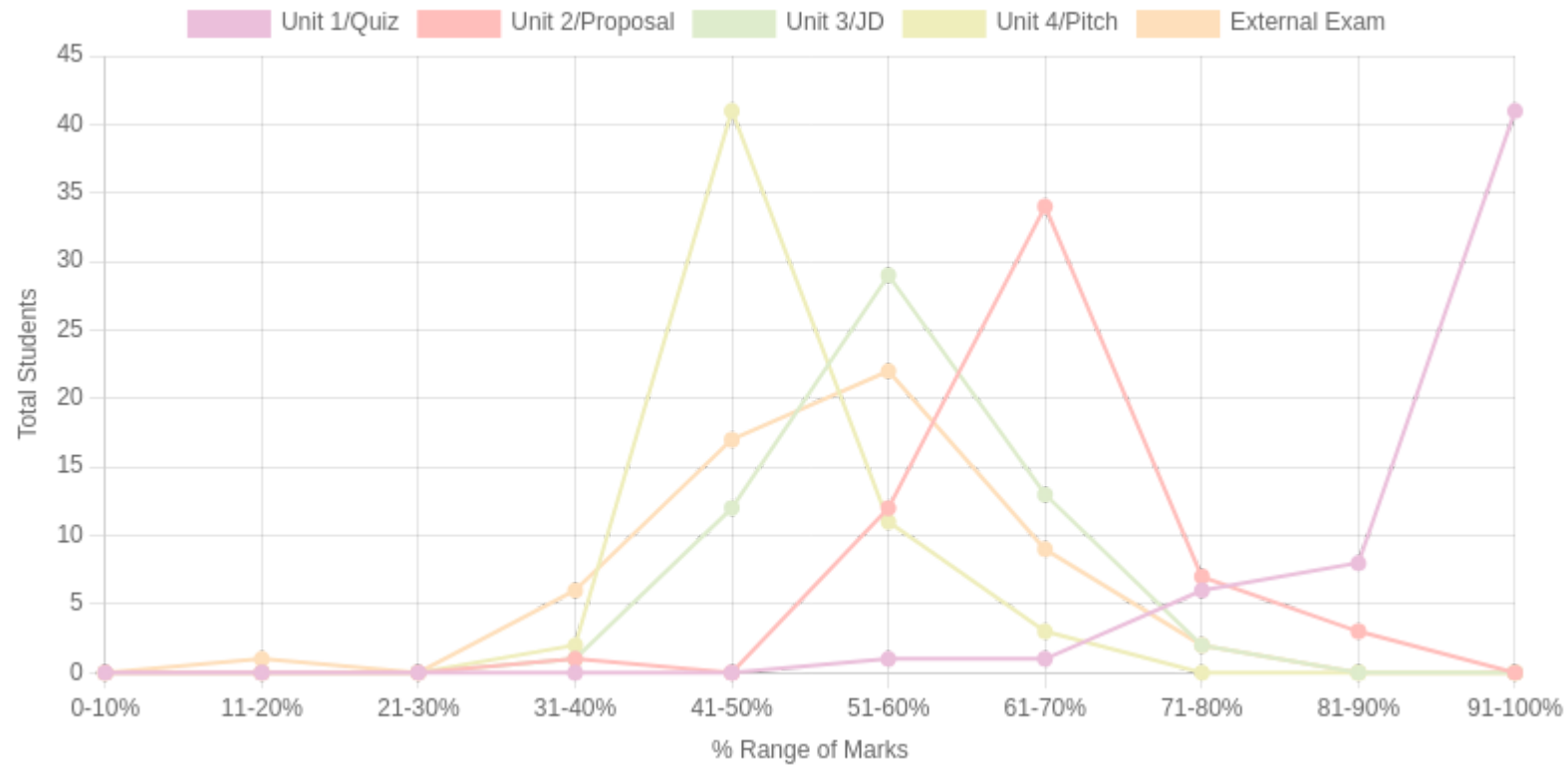
Sr No	Exam Name	Total Marks	Threshold in %	CO1	CO2	CO3	CO4	Avg Attainment
5	External Exam	50	50	1	3	2	3	2.25

CO Coverage



COs	CO1	CO2	CO3	CO4
100	22.5	22.5	27.5	27.5
%	22.5	22.5	27.5	27.5

Student % wise Distribution



Sr No	Assessment Title	Type	Total Marks	Avg Marks	Threshold in %	No of Students Scoring										Total Students Above Threshold
						0-10%	11-20%	21-30%	31-40%	41-50%	51-60%	61-70%	71-80%	81-90%	91-100%	
1	Unit 1/Quiz	F	10	9.52	50	0	0	0	0	0	1	1	6	8	41	57
2	Unit 2/Proposal	F	20	13.45	50	0	0	0	1	0	12	34	7	3	0	56
3	Unit 3/JD	F	10	6.05	50	0	0	0	1	12	29	13	2	0	0	56
4	Unit 4/Pitch	F	10	5.26	50	0	0	0	2	41	11	3	0	0	0	55
5	External Exam	S	50	18.07	50	0	1	0	6	17	22	9	2	0	0	44

Indirect Attainment

Feedback Details	CO wise analysis				
Course Exit Survey-MSW-Sem3-2025-2026 Type: Course Feedback Publish Date: 01/12/2025 Last Date: 04/12/2025 Feedback conduction: Backdated Total Students: 57 Responses Received: 0 Consider for Attainment: <input checked="" type="checkbox"/>	COS and Questions	CO1	CO2	CO3	CO4
		Q1	Q2	Q3	Q4
	Students Above Threshold	27/57	37/57	38/57	45/57
	Students Above Threshold in %	47.36%	64.91%	66.66%	78.94%
	Attainment After comparing with attainment Levels	2	3	3	3
	Average	2	3	3	3

CO Attainment

CO	Direct Attainment	Indirect Attainment	Final Attainment	Target	Gap	Justification
CO1	2.6	2	2.48	2	0.48	-
CO2	3	3	3	2	1	-
CO3	2.8	3	2.84	2.5	0.33	-
CO4	3	3	3	2	1	-

Average CO Attainment : 2.83

PO Direct Attainment

POs	PO1	PO2	PO3	PO4	PO5	PO6	PO7
Weighted Avg	2	2	2	2	2.5	2.33	2

Average CO Attainment : 2.83

POs	PO1	PO2	PO3	PO4	PO5	PO6	PO7
Calculation	$2 (2.83) / 3$	$2 (2.83) / 3$	$2 (2.83) / 3$	$2 (2.83) / 3$	$2.5 (2.83) / 3$	$2.33 (2.83) / 3$	$2 (2.83) / 3$
Direct Attainment	1.89	1.89	1.89	1.89	2.36	2.20	1.89

COURSE OVERVIEW | MSW

COURSE OVERVIEW

MSW | Batch 2024-2026 | SECOND YEAR 2025-2026



Counselling Intervention

(DSE 501)

Course Overview

Vision

To contribute to building a new social order based on human dignity and social justice.

Mission

M1: To work with a preferential option for the vulnerable and exploited, both locally and globally.

M2: To build a cadre of young, competent professionals having a global perspective and a strong value base of compassion, personal integrity, moderation, tolerance and self-respect.

Program Outcome (PO)

Sr. No	PO
1	Graduates will develop a critical and interdisciplinary understanding of social structures, inequalities, and systemic challenges, enabling them to design and implement effective social work interventions.
2	They will apply advanced social work theories, frameworks, and evidence-based practices to engage with individuals, families, groups, and communities at micro, meso, and macro levels.
3	Graduates will demonstrate professional competencies in clinical social work, community organization, policy advocacy, and participatory development, addressing diverse social issues.
4	They will uphold ethical principles, social justice, and human rights in their professional practice, ensuring dignity, inclusivity, and accountability in all interventions.
5	Graduates will integrate research methodologies, policy analysis, and program evaluation to enhance the effectiveness of social work interventions and contribute to knowledge production in the field.
6	They will critically assess and influence social policies, welfare programs, and governance structures to advocate for legislative reforms and rights-based approaches for marginalized communities.
7	Graduates will develop leadership, entrepreneurial, and management skills to design, implement, and sustain social initiatives, working collaboratively with multidisciplinary teams and stakeholders.

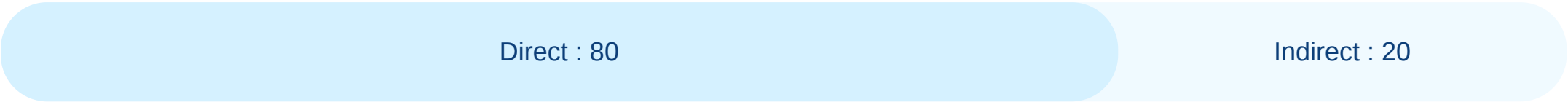
Course Outcomes

- CO1:** Compare and contrast different counselling approaches and models.
- CO2:** Apply counselling interventions in health social work
- CO3:** Apply ethical protocols related to counselling interventions
- CO4:** Demonstrate sensitivity while dealing with clients from diverse backgrounds.

CO - PO - PSO Mapping

CO / PO / PSO	PO1	PO2	PO3	PO4	PO5	PO6	PO7	Average
CO1	2	2	2	-	-	2	-	2.00
CO2	-	2	3	-	-	2	2	2.25
CO3	-	-	2	3	-	2	2	2.25
CO4	2	-	2	3	-	-	2	2.25
Average	2	2	2.25	3	-	2	2	

CO Weightages Based on attainment type



CO targets & Attainment Levels

COs	Target	Direct Attainment levels				Indirect Attainment levels			
		Level 0	Level 1	Level 2	Level 3	Level 0	Level 1	Level 2	Level 3
CO1	2	0 - 1	2 - 40	41 - 50	51 - 100	0 - 1	2 - 40	41 - 50	51 - 100
CO2	2.25	0 - 1	2 - 40	41 - 50	51 - 100	0 - 1	2 - 40	41 - 50	51 - 100
CO3	2.25	0 - 1	2 - 40	41 - 50	51 - 100	0 - 1	2 - 40	41 - 50	51 - 100
CO4	2.25	0 - 1	2 - 40	41 - 50	51 - 100	0 - 1	2 - 40	41 - 50	51 - 100

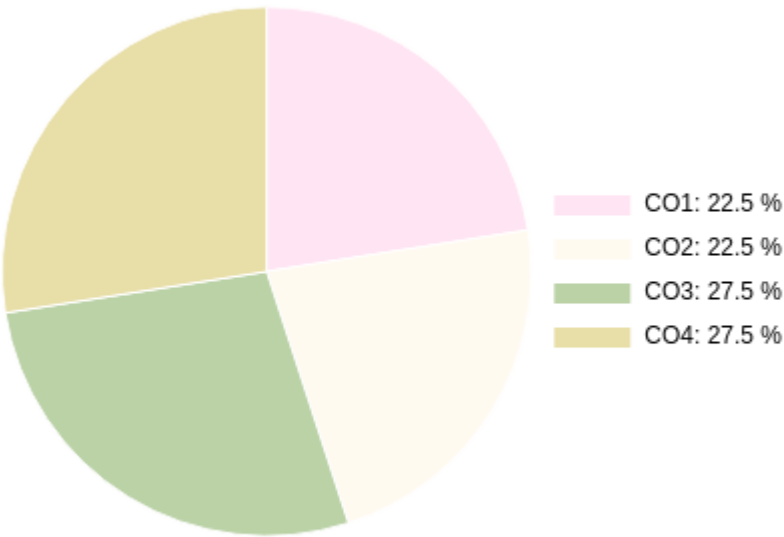
Formative (CIE) Assessments

Sr No	Exam Name	Total Marks	Threshold in %	CO1	CO2	CO3	CO4	Avg Attainment
1	Unit 1/Creative Assignment	20	50	3	3	3	3	3
2	Unit 2/MCQ	10	50	3	3	3	3	3
3	Unit 3/Review	10	50	3	3	3	3	3
4	Unit 4/Oral Interview	10	50	3	3	3	3	3

Summative (SEE) Assessments

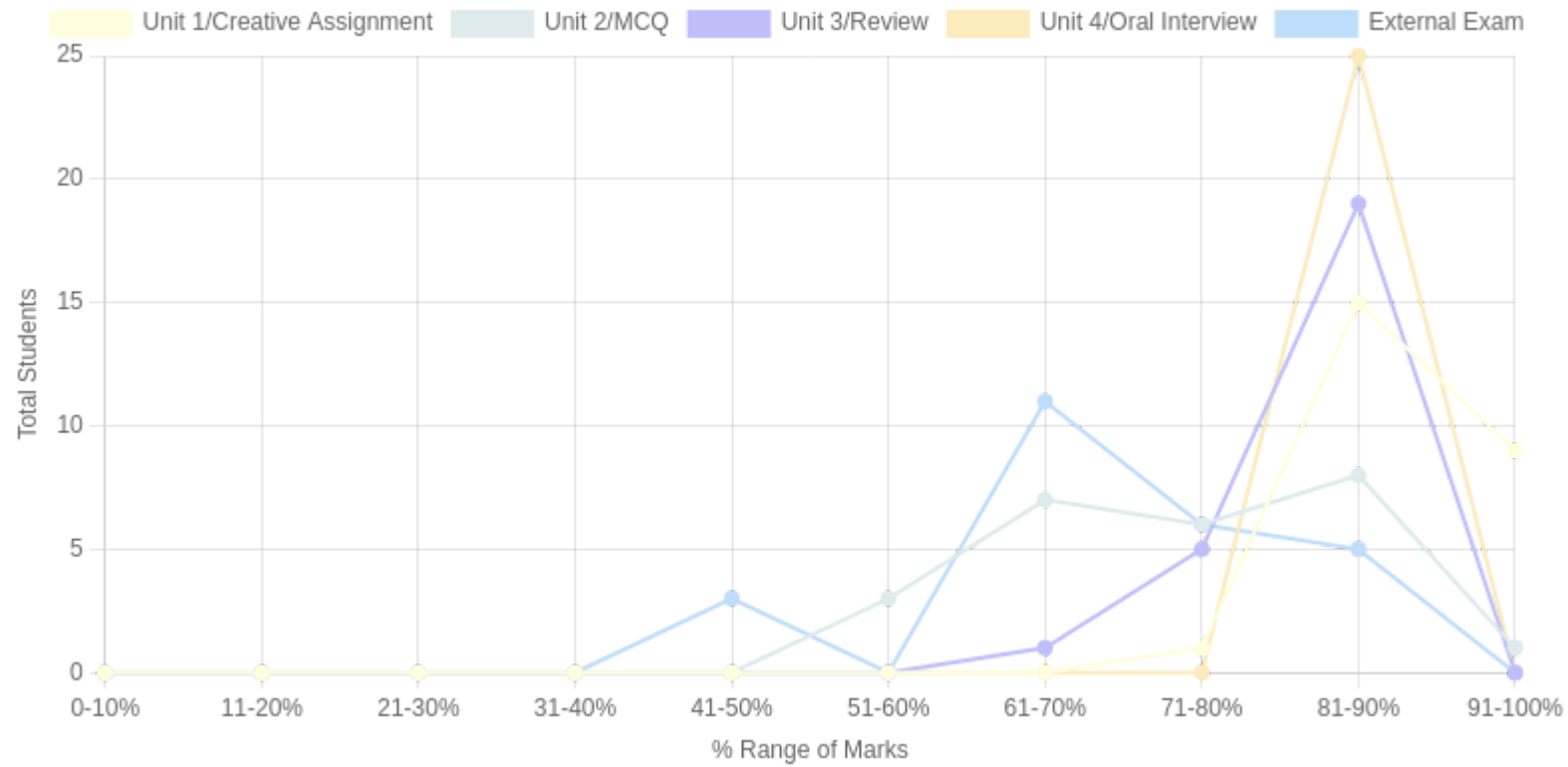
Sr No	Exam Name	Total Marks	Threshold in %	CO1	CO2	CO3	CO4	Avg Attainment
5	External Exam	50	50	3	1	3	3	2.5

CO Coverage



COs	CO1	CO2	CO3	CO4
100	22.5	22.5	27.5	27.5
%	22.5	22.5	27.5	27.5

Student % wise Distribution



Sr No	Assessment Title	Type	Total Marks	Avg Marks	Threshold in %	No of Students Scoring										Total Students Above Threshold
						0-10%	11-20%	21-30%	31-40%	41-50%	51-60%	61-70%	71-80%	81-90%	91-100%	
1	Unit 1/Creative Assignment	F	20	17.88	50	0	0	0	0	0	0	0	1	15	9	25
2	Unit 2/MCQ	F	10	7.7	50	0	0	0	0	0	3	7	6	8	1	25
3	Unit 3/Review	F	10	8.48	50	0	0	0	0	0	0	1	5	19	0	25
4	Unit 4/Oral Interview	F	10	9	50	0	0	0	0	0	0	0	0	25	0	25
5	External Exam	S	50	27.2	50	0	0	0	0	3	0	11	6	5	0	22

Indirect Attainment

Feedback Details	CO wise analysis				
Course Exit Survey-MSW-Sem3-2025-2026 Type: Course Feedback Publish Date: 01/12/2025 Last Date: 04/12/2025 Feedback conduction: Backdated Total Students: 25 Responses Received: 0 Consider for Attainment: <input checked="" type="checkbox"/>	COS and Questions	CO1	CO2	CO3	CO4
		Q1	Q2	Q3	Q4
	Students Above Threshold	27/25	37/25	38/25	45/25
	Students Above Threshold in %	108%	148%	152%	180%
	Attainment After comparing with attainment Levels	3	3	3	3
	Average	3	3	3	3

CO Attainment

CO	Direct Attainment	Indirect Attainment	Final Attainment	Target	Gap	Justification
CO1	3	3	3	2	1	-
CO2	2.6	3	2.68	2.25	0.43	-
CO3	3	3	3	2.25	0.75	-
CO4	3	3	3	2.25	0.75	-

Average CO Attainment : 2.92

PO Direct Attainment

POs	PO1	PO2	PO3	PO4	PO5	PO6	PO7
Weighted Avg	2	2	2.25	3	-	2	2

Average CO Attainment : 2.92

POs	PO1	PO2	PO3	PO4	PO5	PO6	PO7
Calculation	2 (2.92) / 3	2 (2.92) / 3	2.25 (2.92) / 3	3 (2.92) / 3	0 (2.92) / 3	2 (2.92) / 3	2 (2.92) / 3
Direct Attainment	1.95	1.95	2.19	2.92	0.00	1.95	1.95

COURSE OVERVIEW | MSW

COURSE OVERVIEW

MSW | Batch 2024-2026 | SECOND YEAR 2025-2026



Research Project

(RP 501)

Course Overview

Vision

To contribute to building a new social order based on human dignity and social justice.

Mission

M1: To work with a preferential option for the vulnerable and exploited, both locally and globally.

M2: To build a cadre of young, competent professionals having a global perspective and a strong value base of compassion, personal integrity, moderation, tolerance and self-respect.

Program Outcome (PO)

Sr. No	PO
1	Graduates will develop a critical and interdisciplinary understanding of social structures, inequalities, and systemic challenges, enabling them to design and implement effective social work interventions.
2	They will apply advanced social work theories, frameworks, and evidence-based practices to engage with individuals, families, groups, and communities at micro, meso, and macro levels.
3	Graduates will demonstrate professional competencies in clinical social work, community organization, policy advocacy, and participatory development, addressing diverse social issues.
4	They will uphold ethical principles, social justice, and human rights in their professional practice, ensuring dignity, inclusivity, and accountability in all interventions.
5	Graduates will integrate research methodologies, policy analysis, and program evaluation to enhance the effectiveness of social work interventions and contribute to knowledge production in the field.
6	They will critically assess and influence social policies, welfare programs, and governance structures to advocate for legislative reforms and rights-based approaches for marginalized communities.
7	Graduates will develop leadership, entrepreneurial, and management skills to design, implement, and sustain social initiatives, working collaboratively with multidisciplinary teams and stakeholders.

Course Outcomes

CO1: Identify a research topic relevant to social work and formulate research problem statement, objectives, research questions &/or hypotheses.

CO2: Collate theoretically sound literature review.

CO3: Formulate research objectives and define key concepts related to the research topic.

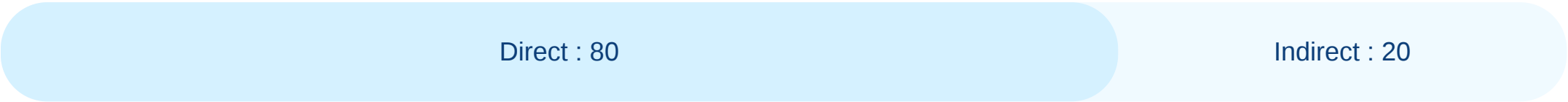
CO4: Apply appropriate sampling and research design for the selected research topic.

CO5: Construct data collection tools

CO - PO - PSO Mapping

CO / PO / PSO	PO1	PO2	PO3	PO4	PO5	PO6	PO7	Average
CO1	2	-	-	-	3	3	2	2.50
CO2	-	2	-	-	3	3	2	2.50
CO3	2	2	-	-	3	-	2	2.25
CO4	-	2	-	-	3	3	2	2.50
CO5	-	2	-	-	3	3	2	2.50
Average	2	2	-	-	3	3	2	

CO Weightages Based on attainment type



CO targets & Attainment Levels

COs	Target	Direct Attainment levels				Indirect Attainment levels			
		Level 0	Level 1	Level 2	Level 3	Level 0	Level 1	Level 2	Level 3
CO1	2.5	0 - 1	2 - 40	41 - 50	51 - 100	0 - 1	2 - 40	41 - 50	51 - 100
CO2	2.5	0 - 1	2 - 40	41 - 50	51 - 100	0 - 1	2 - 40	41 - 50	51 - 100
CO3	2.25	0 - 1	2 - 40	41 - 50	51 - 100	0 - 1	2 - 40	41 - 50	51 - 100
CO4	2.5	0 - 1	2 - 40	41 - 50	51 - 100	0 - 1	2 - 40	41 - 50	51 - 100
CO5	2.5	0 - 1	2 - 40	41 - 50	51 - 100	0 - 1	2 - 40	41 - 50	51 - 100

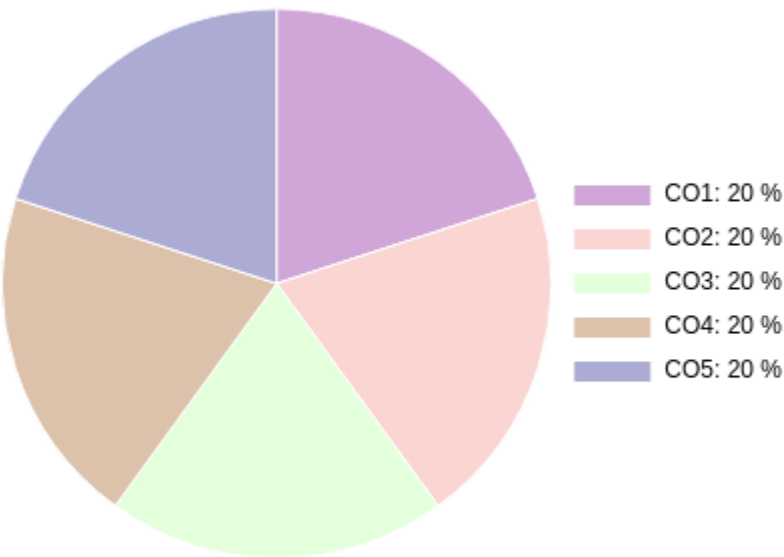
Formative (CIE) Assessments

Sr No	Exam Name	Total Marks	Threshold in %	CO1	CO2	CO3	CO4	CO5	Avg Attainment
1	Internal	50	50	3	3	3	3	3	3

Summative (SEE) Assessments

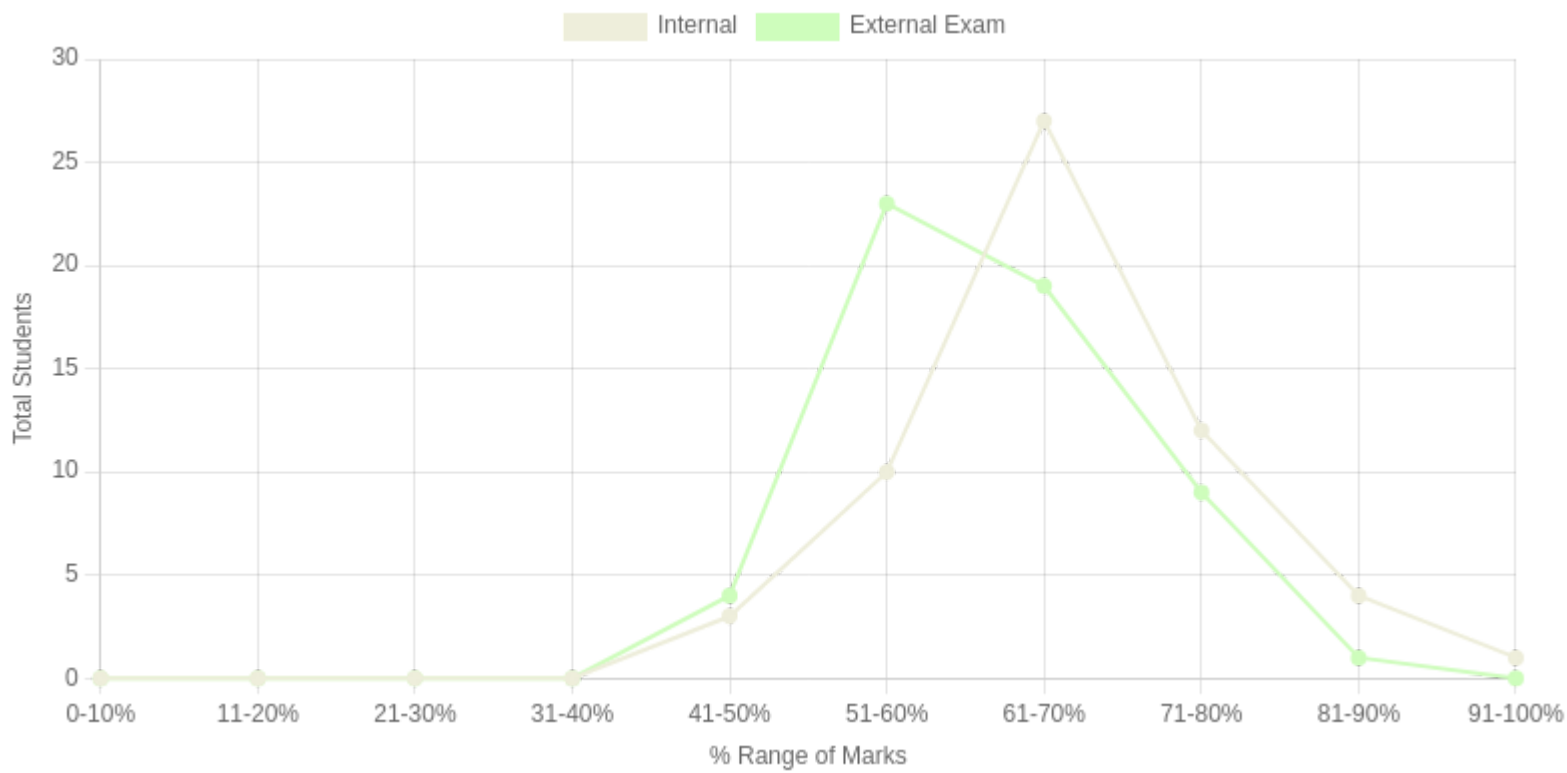
Sr No	Exam Name	Total Marks	Threshold in %	CO1	CO2	CO3	CO4	CO5	Avg Attainment
2	External Exam	50	50	3	3	3	3	3	3

CO Coverage



COs	CO1	CO2	CO3	CO4	CO5
100	20	20	20	20	20
%	20	20	20	20	20

Student % wise Distribution



Sr No	Assessment Title	Type	Total Marks	Avg Marks	Threshold in %	No of Students Scoring										Total Students Above Threshold
						0-10%	11-20%	21-30%	31-40%	41-50%	51-60%	61-70%	71-80%	81-90%	91-100%	
1	Internal	F	50	33.61	50	0	0	0	0	3	10	27	12	4	1	56
2	External Exam	S	50	30.86	50	0	0	0	0	4	23	19	9	1	0	55

Indirect Attainment

Feedback Details	CO wise analysis				
Course Exit Survey-MSW-Sem3-2025-2026 Type: Course Feedback Publish Date: 01/12/2025 Last Date: 04/12/2025 Feedback conduction: Backdated Total Students: 57 Responses Received: 0 Consider for Attainment: <input checked="" type="checkbox"/>	COS and Questions	CO1	CO2	CO3	CO4
		Q1	Q2	Q3	Q4
	Students Above Threshold	27/57	37/57	38/57	45/57
	Students Above Threshold in %	47.36%	64.91%	66.66%	78.94%
	Attainment After comparing with attainment Levels	2	3	3	3
	Average	2	3	3	3

CO Attainment

CO	Direct Attainment	Indirect Attainment	Final Attainment	Target	Gap	Justification
CO1	3	2	2.8	2.5	0.29	-
CO2	3	3	3	2.5	0.5	-
CO3	3	3	3	2.25	0.75	-
CO4	3	3	3	2.5	0.5	-
CO5	3	0	2.4	2.5	-0.1	-

Average CO Attainment : 2.84

PO Direct Attainment

POs	PO1	PO2	PO3	PO4	PO5	PO6	PO7
Weighted Avg	2	2	-	-	3	3	2

Average CO Attainment : 2.84

POs	PO1	PO2	PO3	PO4	PO5	PO6	PO7
Calculation	$2 (2.84) / 3$	$2 (2.84) / 3$	$0 (2.84) / 3$	$0 (2.84) / 3$	$3 (2.84) / 3$	$3 (2.84) / 3$	$2 (2.84) / 3$
Direct Attainment	1.89	1.89	0.00	0.00	2.84	2.84	1.89

COURSE OVERVIEW | MSW

COURSE OVERVIEW

MSW | Batch 2024-2026 | SECOND YEAR 2025-2026



Social Policy in Development Context

(CC 501)

Course Overview

Vision

To contribute to building a new social order based on human dignity and social justice.

Mission

M1: To work with a preferential option for the vulnerable and exploited, both locally and globally.

M2: To build a cadre of young, competent professionals having a global perspective and a strong value base of compassion, personal integrity, moderation, tolerance and self-respect.

Program Outcome (PO)

Sr. No	PO
1	Graduates will develop a critical and interdisciplinary understanding of social structures, inequalities, and systemic challenges, enabling them to design and implement effective social work interventions.
2	They will apply advanced social work theories, frameworks, and evidence-based practices to engage with individuals, families, groups, and communities at micro, meso, and macro levels.
3	Graduates will demonstrate professional competencies in clinical social work, community organization, policy advocacy, and participatory development, addressing diverse social issues.
4	They will uphold ethical principles, social justice, and human rights in their professional practice, ensuring dignity, inclusivity, and accountability in all interventions.
5	Graduates will integrate research methodologies, policy analysis, and program evaluation to enhance the effectiveness of social work interventions and contribute to knowledge production in the field.
6	They will critically assess and influence social policies, welfare programs, and governance structures to advocate for legislative reforms and rights-based approaches for marginalized communities.
7	Graduates will develop leadership, entrepreneurial, and management skills to design, implement, and sustain social initiatives, working collaboratively with multidisciplinary teams and stakeholders.

Course Outcomes

CO1: Describe the evolution of the field of Welfare and Social Policy

CO2: Explain the theoretical concepts and principles related to Social Policy

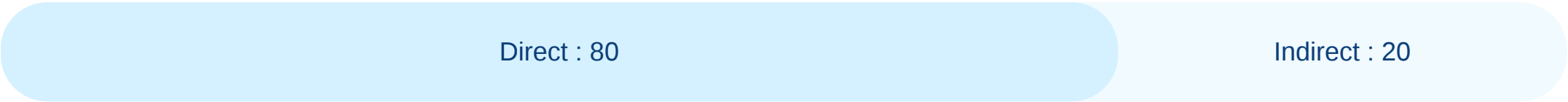
CO3: Deliberate on the planning and policy formulation process in the Indian context

CO4: Distinguish the role of social worker in policy analysis & advocacy

CO - PO - PSO Mapping

CO / PO / PSO	PO1	PO2	PO3	PO4	PO5	PO6	PO7	Average
CO1	2	2	-	2	2	-	-	2.00
CO2	2	3	-	-	2	2	-	2.25
CO3	-	2	2	-	3	3	-	2.50
CO4	-	2	2	2	-	3	-	2.25
Average	2	2.25	2	2	2.33	2.66	-	

CO Weightages Based on attainment type



CO targets & Attainment Levels

COs	Target	Direct Attainment levels				Indirect Attainment levels			
		Level 0	Level 1	Level 2	Level 3	Level 0	Level 1	Level 2	Level 3
CO1	2	0 - 1	2 - 40	41 - 50	51 - 100	0 - 1	2 - 40	41 - 50	51 - 100
CO2	2.25	0 - 1	2 - 40	41 - 50	51 - 100	0 - 1	2 - 40	41 - 50	51 - 100
CO3	2.5	0 - 1	2 - 40	41 - 50	51 - 100	0 - 1	2 - 40	41 - 50	51 - 100
CO4	2.25	0 - 1	2 - 40	41 - 50	51 - 100	0 - 1	2 - 40	41 - 50	51 - 100

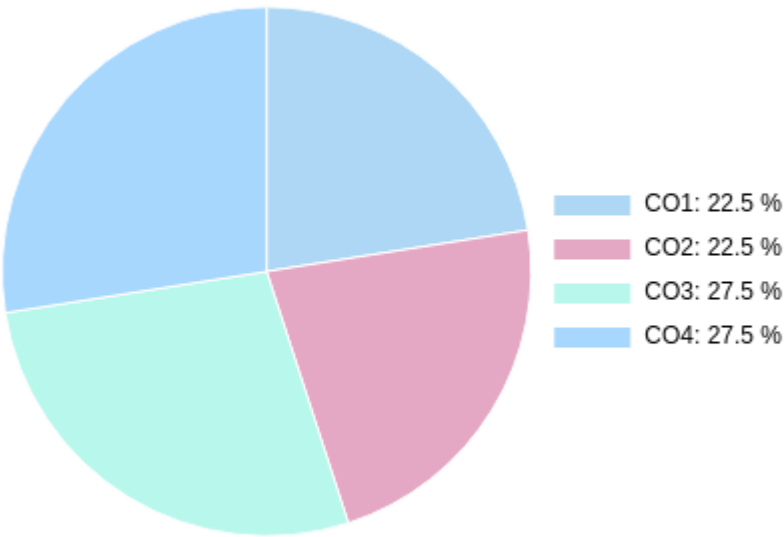
Formative (CIE) Assessments

Sr No	Exam Name	Total Marks	Threshold in %	CO1	CO2	CO3	CO4	Avg Attainment
1	Unit 1/Group Presentation & Class Test	15	50	3	3	3	3	3
2	Unit 2/Quiz	10	50	3	3	3	3	3
3	Unit 3/Class Test	10	50	3	3	3	3	3
4	Unit 4/Group Presentation	15	50	3	3	3	3	3

Summative (SEE) Assessments

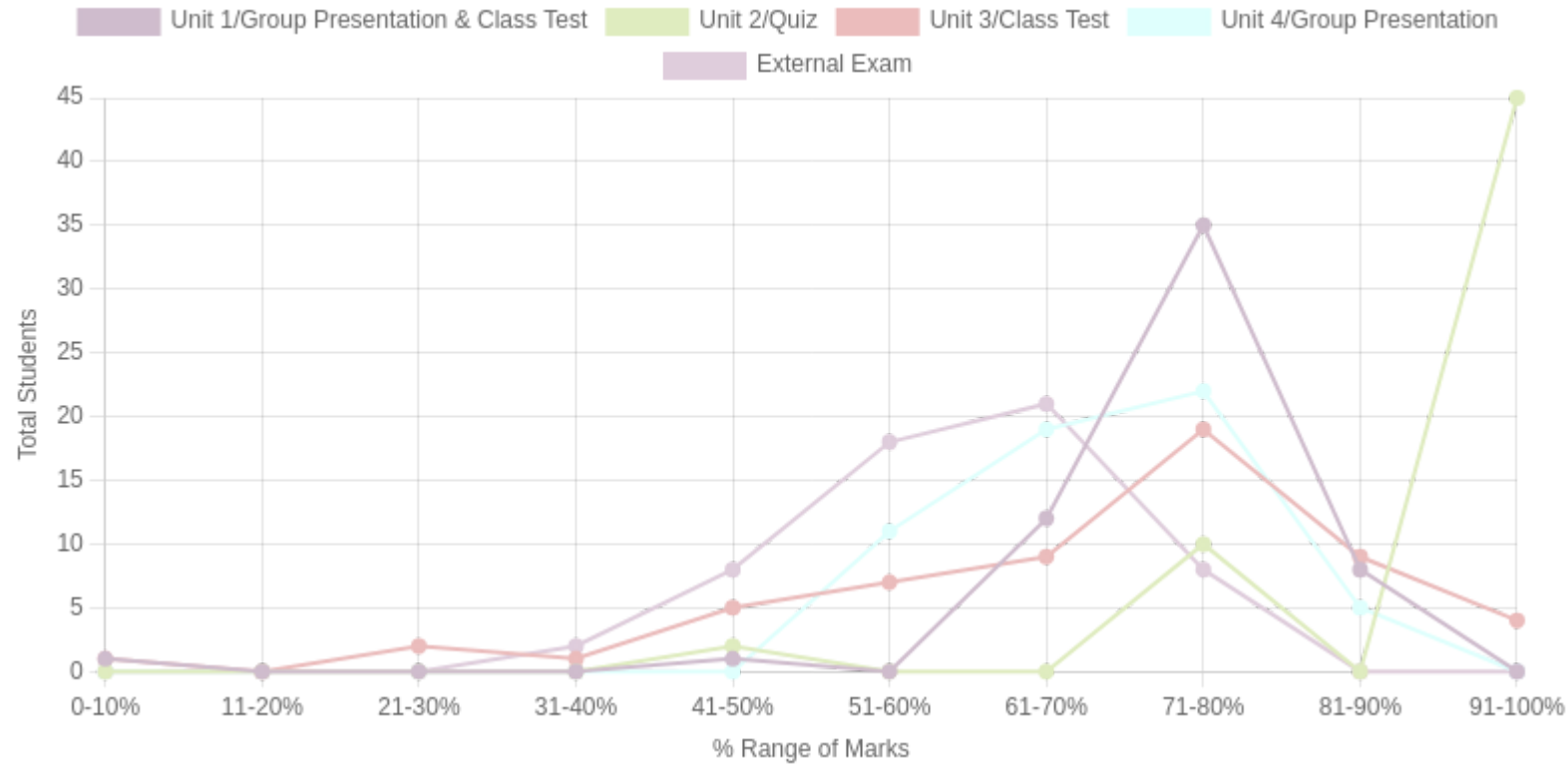
Sr No	Exam Name	Total Marks	Threshold in %	CO1	CO2	CO3	CO4	Avg Attainment
5	External Exam	50	50	2	3	3	2	2.5

CO Coverage



COs	CO1	CO2	CO3	CO4
100	22.5	22.5	27.5	27.5
%	22.5	22.5	27.5	27.5

Student % wise Distribution



Sr No	Assessment Title	Type	Total Marks	Avg Marks	Threshold in %	No of Students Scoring										Total Students Above Threshold
						0-10%	11-20%	21-30%	31-40%	41-50%	51-60%	61-70%	71-80%	81-90%	91-100%	
1	Unit 1/Group Presentation & Class Test	F	15	11.01	50	1	0	0	0	1	0	12	35	8	0	56
2	Unit 2/Quiz	F	10	9.47	50	0	0	0	0	2	0	0	10	0	45	57
3	Unit 3/Class Test	F	10	7	50	1	0	2	1	5	7	9	19	9	4	50
4	Unit 4/Group Presentation	F	15	10.67	50	0	0	0	0	0	11	19	22	5	0	57
5	External Exam	S	50	20.62	50	0	0	0	2	8	18	21	8	0	0	51

Indirect Attainment

Feedback Details	CO wise analysis				
Course Exit Survey-MSW-Sem3-2025-2026 Type: Course Feedback Publish Date: 01/12/2025 Last Date: 04/12/2025 Feedback conduction: Backdated Total Students: 57 Responses Received: 0 Consider for Attainment: <input checked="" type="checkbox"/>	COS and Questions	CO1	CO2	CO3	CO4
		Q1	Q2	Q3	Q4
	Students Above Threshold	27/57	37/57	38/57	45/57
	Students Above Threshold in %	47.36%	64.91%	66.66%	78.94%
	Attainment After comparing with attainment Levels	2	3	3	3
	Average	2	3	3	3

CO Attainment

CO	Direct Attainment	Indirect Attainment	Final Attainment	Target	Gap	Justification
CO1	2.8	2	2.63	2	0.62	-
CO2	3	3	3	2.25	0.75	-
CO3	3	3	3	2.5	0.5	-
CO4	2.8	3	2.84	2.25	0.58	-

Average CO Attainment : 2.86

PO Direct Attainment

POs	PO1	PO2	PO3	PO4	PO5	PO6	PO7
Weighted Avg	2	2.25	2	2	2.33	2.66	-

Average CO Attainment : 2.86

POs	PO1	PO2	PO3	PO4	PO5	PO6	PO7
Calculation	$2 (2.86) / 3$	$2.25 (2.86) / 3$	$2 (2.86) / 3$	$2 (2.86) / 3$	$2.33 (2.86) / 3$	$2.66 (2.86) / 3$	$0 (2.86) / 3$
Direct Attainment	1.91	2.15	1.91	1.91	2.22	2.54	0.00

COURSE OVERVIEW | MSW

COURSE OVERVIEW

MSW | Batch 2024-2026 | SECOND YEAR 2025-2026



Social Work with Older Adults

(DSE 503)

Course Overview

Vision

To contribute to building a new social order based on human dignity and social justice.

Mission

M1: To work with a preferential option for the vulnerable and exploited, both locally and globally.

M2: To build a cadre of young, competent professionals having a global perspective and a strong value base of compassion, personal integrity, moderation, tolerance and self-respect.

Program Outcome (PO)

Sr. No	PO
1	Graduates will develop a critical and interdisciplinary understanding of social structures, inequalities, and systemic challenges, enabling them to design and implement effective social work interventions.
2	They will apply advanced social work theories, frameworks, and evidence-based practices to engage with individuals, families, groups, and communities at micro, meso, and macro levels.
3	Graduates will demonstrate professional competencies in clinical social work, community organization, policy advocacy, and participatory development, addressing diverse social issues.
4	They will uphold ethical principles, social justice, and human rights in their professional practice, ensuring dignity, inclusivity, and accountability in all interventions.
5	Graduates will integrate research methodologies, policy analysis, and program evaluation to enhance the effectiveness of social work interventions and contribute to knowledge production in the field.
6	They will critically assess and influence social policies, welfare programs, and governance structures to advocate for legislative reforms and rights-based approaches for marginalized communities.
7	Graduates will develop leadership, entrepreneurial, and management skills to design, implement, and sustain social initiatives, working collaboratively with multidisciplinary teams and stakeholders.

Course Outcomes

CO1: Describe the biological, psychological and sociological aspects of normal ageing, issues and concerns.

CO2: Examine current social policy, relevant legislation, and political, social, historical, and/or economic systems and their impacts on older individuals and communities while delivering services.

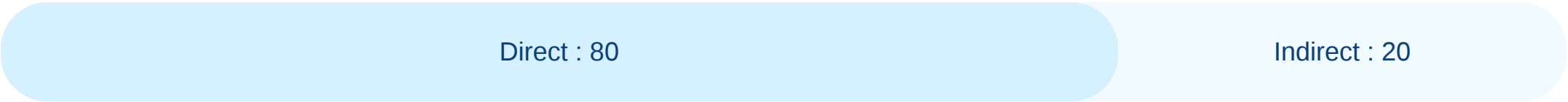
CO3: Exemplify geriatric social work practice from an anti-oppressive, strengths-based perspective recognizing the capacity for resilience and growth of older individuals, their families, groups and communities.

CO4: Demonstrate skills in case management, crisis intervention, community care and support, advocacy and creative interventions based on international/national frameworks, theories, policies and programmes.

CO - PO - PSO Mapping

CO / PO / PSO	PO1	PO2	PO3	PO4	PO5	PO6	PO7	Average
CO1	2	-	2	2	-	3	-	2.25
CO2	2	-	-	-	2	3	2	2.25
CO3	-	2	2	3	-	-	2	2.25
CO4	-	2	3	2	-	3	-	2.50
Average	2	2	2.33	2.33	2	3	2	

CO Weightages Based on attainment type



CO targets & Attainment Levels

COs	Target	Direct Attainment levels				Indirect Attainment levels			
		Level 0	Level 1	Level 2	Level 3	Level 0	Level 1	Level 2	Level 3
CO1	2.25	0 - 1	2 - 40	41 - 50	51 - 100	0 - 1	2 - 40	41 - 50	51 - 100
CO2	2.25	0 - 1	2 - 40	41 - 50	51 - 100	0 - 1	2 - 40	41 - 50	51 - 100
CO3	2.25	0 - 1	2 - 40	41 - 50	51 - 100	0 - 1	2 - 40	41 - 50	51 - 100
CO4	2.5	0 - 1	2 - 40	41 - 50	51 - 100	0 - 1	2 - 40	41 - 50	51 - 100

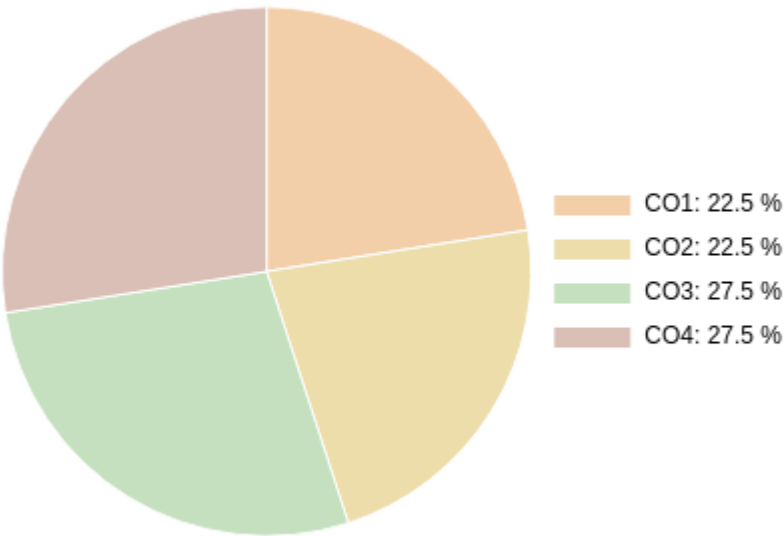
Formative (CIE) Assessments

Sr No	Exam Name	Total Marks	Threshold in %	CO1	CO2	CO3	CO4	Avg Attainment
1	Unit 3/Class Test	11	50	3	3	3	3	3
2	Unit 1/Class Test	12	50	1	1	1	1	1
3	Unit 2/Class Test	12	50	3	3	3	3	3
4	Unit 4/Assignment	15	50	3	3	3	3	3

Summative (SEE) Assessments

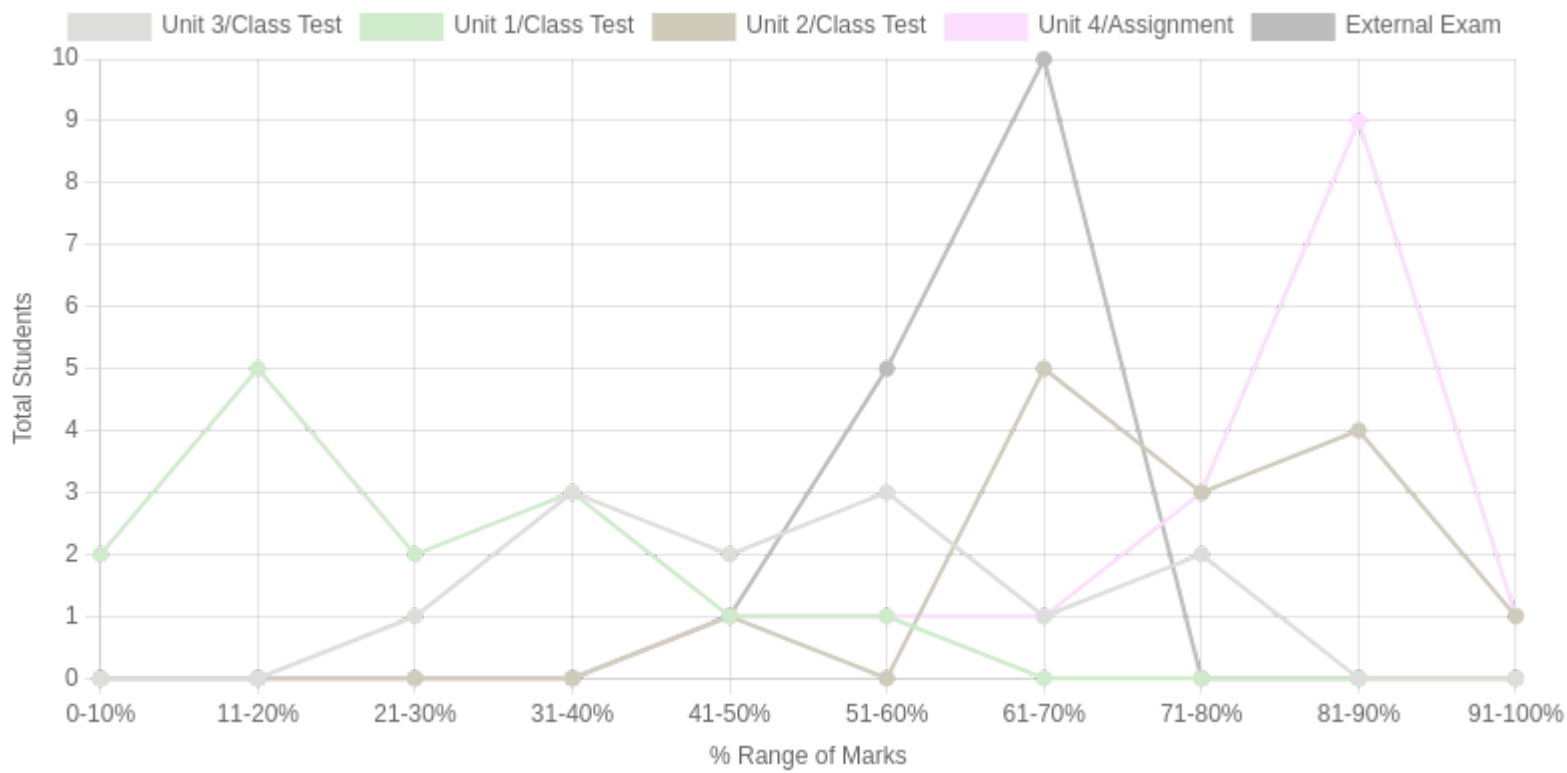
Sr No	Exam Name	Total Marks	Threshold in %	CO1	CO2	CO3	CO4	Avg Attainment
5	External Exam	50	50	3	2	3	3	2.75

CO Coverage



COs	CO1	CO2	CO3	CO4
100	22.5	22.5	27.5	27.5
%	22.5	22.5	27.5	27.5

Student % wise Distribution



Sr No	Assessment Title	Type	Total Marks	Avg Marks	Threshold in %	No of Students Scoring										Total Students Above Threshold
						0-10%	11-20%	21-30%	31-40%	41-50%	51-60%	61-70%	71-80%	81-90%	91-100%	
1	Unit 3/Class Test	F	11	6.03	50	0	0	1	3	2	3	1	2	0	0	9
2	Unit 1/Class Test	F	12	2.96	50	2	5	2	3	1	1	0	0	0	0	2
3	Unit 2/Class Test	F	12	8.84	50	0	0	0	0	1	0	5	3	4	1	16
4	Unit 4/Assignment	F	15	12.03	50	0	0	0	0	1	1	1	3	9	1	16
5	External Exam	S	50	21.43	50	0	0	0	0	1	5	10	0	0	0	16

Indirect Attainment

Feedback Details	CO wise analysis				
Course Exit Survey-MSW-Sem3-2025-2026 Type: Course Feedback Publish Date: 01/12/2025 Last Date: 04/12/2025 Feedback conduction: Backdated Total Students: 16 Responses Received: 0 Consider for Attainment: <input checked="" type="checkbox"/>	COS and Questions	CO1	CO2	CO3	CO4
		Q1	Q2	Q3	Q4
	Students Above Threshold	27/16	37/16	38/16	45/16
	Students Above Threshold in %	168.75%	231.25%	237.5%	281.25%
	Attainment After comparing with attainment Levels	3	3	3	3
	Average	3	3	3	3

CO Attainment

CO	Direct Attainment	Indirect Attainment	Final Attainment	Target	Gap	Justification
CO1	2.6	3	2.68	2.25	0.43	-
CO2	2.4	3	2.52	2.25	0.27	-
CO3	2.6	3	2.68	2.25	0.43	-
CO4	2.6	3	2.68	2.5	0.18	-

Average CO Attainment : 2.64

PO Direct Attainment

POs	PO1	PO2	PO3	PO4	PO5	PO6	PO7
Weighted Avg	2	2	2.33	2.33	2	3	2

Average CO Attainment : 2.64

POs	PO1	PO2	PO3	PO4	PO5	PO6	PO7
Calculation	$2 (2.64) / 3$	$2 (2.64) / 3$	$2.33 (2.64) / 3$	$2.33 (2.64) / 3$	$2 (2.64) / 3$	$3 (2.64) / 3$	$2 (2.64) / 3$
Direct Attainment	1.76	1.76	2.05	2.05	1.76	2.64	1.76

COURSE OVERVIEW | MSW

COURSE OVERVIEW

MSW | Batch 2024-2026 | SECOND YEAR 2025-2026



Sustainable Development and Environment

(DSE 502)

Course Overview

Vision

To contribute to building a new social order based on human dignity and social justice.

Mission

M1: To work with a preferential option for the vulnerable and exploited, both locally and globally.

M2: To build a cadre of young, competent professionals having a global perspective and a strong value base of compassion, personal integrity, moderation, tolerance and self-respect.

Program Outcome (PO)

Sr. No	PO
1	Graduates will develop a critical and interdisciplinary understanding of social structures, inequalities, and systemic challenges, enabling them to design and implement effective social work interventions.
2	They will apply advanced social work theories, frameworks, and evidence-based practices to engage with individuals, families, groups, and communities at micro, meso, and macro levels.
3	Graduates will demonstrate professional competencies in clinical social work, community organization, policy advocacy, and participatory development, addressing diverse social issues.
4	They will uphold ethical principles, social justice, and human rights in their professional practice, ensuring dignity, inclusivity, and accountability in all interventions.
5	Graduates will integrate research methodologies, policy analysis, and program evaluation to enhance the effectiveness of social work interventions and contribute to knowledge production in the field.
6	They will critically assess and influence social policies, welfare programs, and governance structures to advocate for legislative reforms and rights-based approaches for marginalized communities.
7	Graduates will develop leadership, entrepreneurial, and management skills to design, implement, and sustain social initiatives, working collaboratively with multidisciplinary teams and stakeholders.

Course Outcomes

CO1: Relate to the concept of sustainable development and the framework for its practice

CO2: Analyze the contemporary development dynamics in rural and urban areas and its implications.

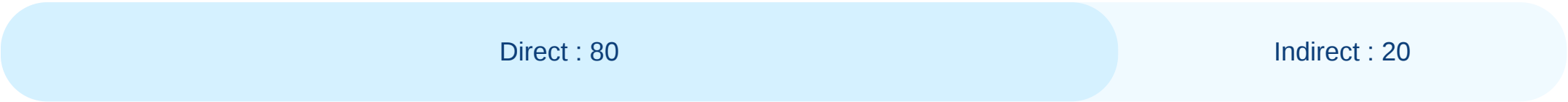
CO3: Apply global practices to respond to the needs of communities in the context of sustainable development.

CO4: Create strategies to move towards sustainable development at individual, family, community, and national levels.

CO - PO - PSO Mapping

CO / PO / PSO	PO1	PO2	PO3	PO4	PO5	PO6	PO7	Average
CO1	2	2	-	-	2	3	-	2.25
CO2	2	-	2	-	2	3	-	2.25
CO3	2	2	-	-	-	3	2	2.25
CO4	2	-	2	-	-	3	2	2.25
Average	2	2	2	-	2	3	2	

CO Weightages Based on attainment type



CO targets & Attainment Levels

COs	Target	Direct Attainment levels				Indirect Attainment levels			
		Level 0	Level 1	Level 2	Level 3	Level 0	Level 1	Level 2	Level 3
CO1	2.25	0 - 1	2 - 40	41 - 50	51 - 100	0 - 1	2 - 40	41 - 50	51 - 100
CO2	2.25	0 - 1	2 - 40	41 - 50	51 - 100	0 - 1	2 - 40	41 - 50	51 - 100
CO3	2.25	0 - 1	2 - 40	41 - 50	51 - 100	0 - 1	2 - 40	41 - 50	51 - 100
CO4	2.25	0 - 1	2 - 40	41 - 50	51 - 100	0 - 1	2 - 40	41 - 50	51 - 100

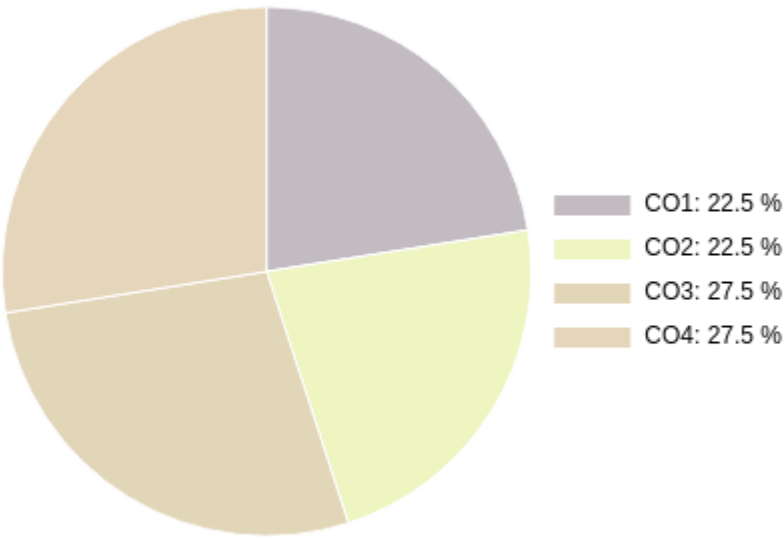
Formative (CIE) Assessments

Sr No	Exam Name	Total Marks	Threshold in %	CO1	CO2	CO3	CO4	Avg Attainment
1	Unit 1/Test	15	50	3	3	3	3	3
2	Unit 2/Assignment	10	50	3	3	3	3	3
3	Unit 3/Article Review	5	50	3	3	3	3	3
4	Unit 4/Multiple Choice Test	20	50	3	3	3	3	3

Summative (SEE) Assessments

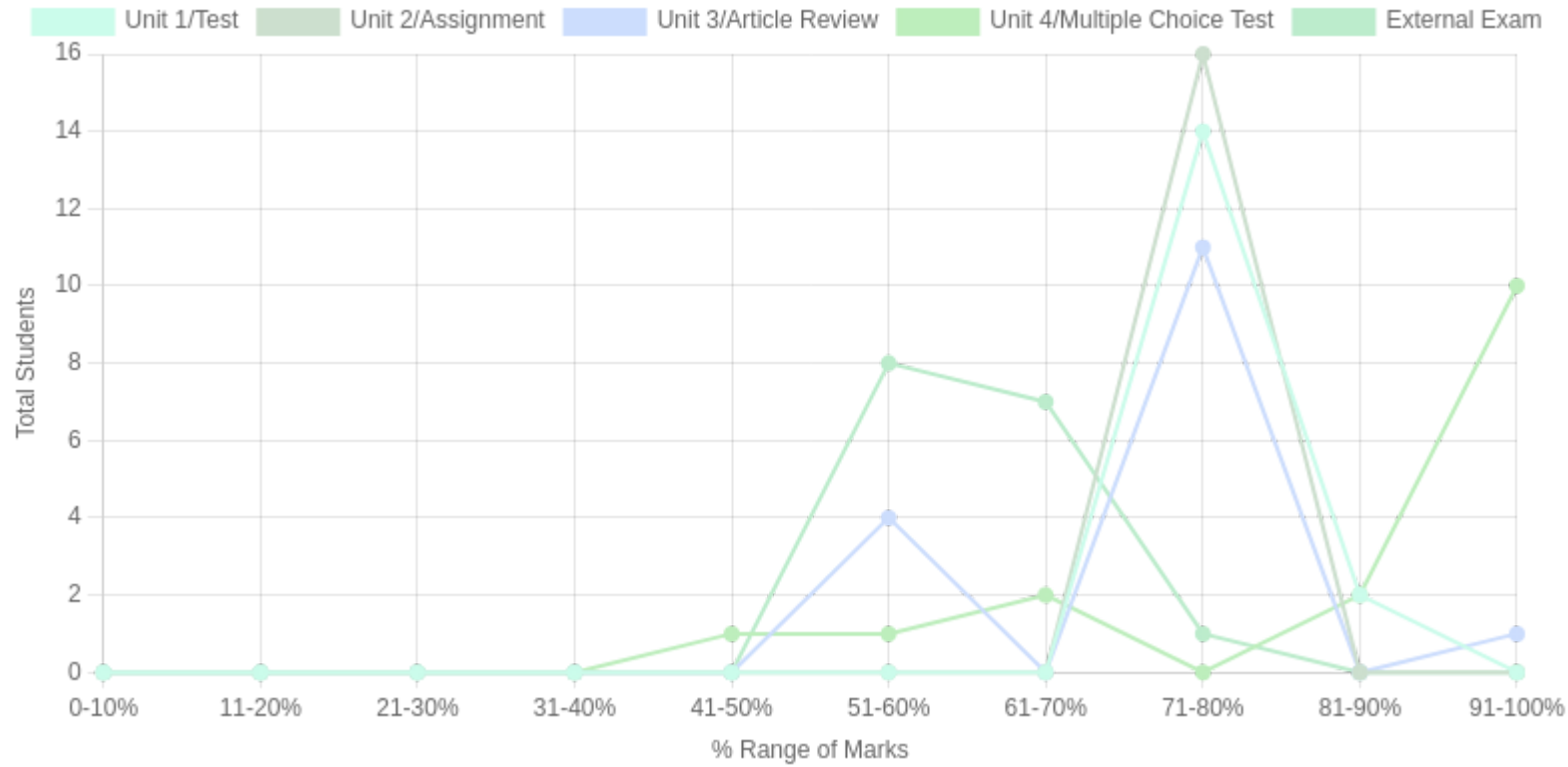
Sr No	Exam Name	Total Marks	Threshold in %	CO1	CO2	CO3	CO4	Avg Attainment
5	External Exam	50	50	1	3	3	2	2.25

CO Coverage



COs	CO1	CO2	CO3	CO4
100	22.5	22.5	27.5	27.5
%	22.5	22.5	27.5	27.5

Student % wise Distribution



Sr No	Assessment Title	Type	Total Marks	Avg Marks	Threshold in %	No of Students Scoring										Total Students Above Threshold
						0-10%	11-20%	21-30%	31-40%	41-50%	51-60%	61-70%	71-80%	81-90%	91-100%	
1	Unit 1/Test	F	15	11.93	50	0	0	0	0	0	0	0	14	2	0	16
2	Unit 2/Assignment	F	10	8	50	0	0	0	0	0	0	0	16	0	0	16
3	Unit 3/Article Review	F	5	3.81	50	0	0	0	0	0	4	0	11	0	1	16
4	Unit 4/Multiple Choice Test	F	20	17.87	50	0	0	0	0	1	1	2	0	2	10	16
5	External Exam	S	50	17.03	50	0	0	0	0	0	8	7	1	0	0	16

Indirect Attainment

Feedback Details	CO wise analysis				
Course Exit Survey-MSW-Sem3-2025-2026 Type: Course Feedback Publish Date: 01/12/2025 Last Date: 04/12/2025 Feedback conduction: Backdated Total Students: 16 Responses Received: 0 Consider for Attainment: <input checked="" type="checkbox"/>	COS and Questions	CO1	CO2	CO3	CO4
		Q1	Q2	Q3	Q4
	Students Above Threshold	27/16	37/16	38/16	45/16
	Students Above Threshold in %	168.75%	231.25%	237.5%	281.25%
	Attainment After comparing with attainment Levels	3	3	3	3
	Average	3	3	3	3

CO Attainment

CO	Direct Attainment	Indirect Attainment	Final Attainment	Target	Gap	Justification
CO1	2.6	3	2.68	2.25	0.43	-
CO2	3	3	3	2.25	0.75	-
CO3	3	3	3	2.25	0.75	-
CO4	2.8	3	2.84	2.25	0.58	-

Average CO Attainment : 2.88

PO Direct Attainment

POs	PO1	PO2	PO3	PO4	PO5	PO6	PO7
Weighted Avg	2	2	2	-	2	3	2

Average CO Attainment : 2.88

POs	PO1	PO2	PO3	PO4	PO5	PO6	PO7
Calculation	$2 (2.88) / 3$	$2 (2.88) / 3$	$2 (2.88) / 3$	$0 (2.88) / 3$	$2 (2.88) / 3$	$3 (2.88) / 3$	$2 (2.88) / 3$
Direct Attainment	1.92	1.92	1.92	0.00	1.92	2.88	1.92

COURSE OVERVIEW | MSW

COURSE OVERVIEW

MSW | Batch 2024-2026 | SECOND YEAR 2025-2026



Training and Supervision in Social Work

(CC 504)

Course Overview

Vision

To contribute to building a new social order based on human dignity and social justice.

Mission

M1: To work with a preferential option for the vulnerable and exploited, both locally and globally.

M2: To build a cadre of young, competent professionals having a global perspective and a strong value base of compassion, personal integrity, moderation, tolerance and self-respect.

Program Outcome (PO)

Sr. No	PO
1	Graduates will develop a critical and interdisciplinary understanding of social structures, inequalities, and systemic challenges, enabling them to design and implement effective social work interventions.
2	They will apply advanced social work theories, frameworks, and evidence-based practices to engage with individuals, families, groups, and communities at micro, meso, and macro levels.
3	Graduates will demonstrate professional competencies in clinical social work, community organization, policy advocacy, and participatory development, addressing diverse social issues.
4	They will uphold ethical principles, social justice, and human rights in their professional practice, ensuring dignity, inclusivity, and accountability in all interventions.
5	Graduates will integrate research methodologies, policy analysis, and program evaluation to enhance the effectiveness of social work interventions and contribute to knowledge production in the field.
6	They will critically assess and influence social policies, welfare programs, and governance structures to advocate for legislative reforms and rights-based approaches for marginalized communities.
7	Graduates will develop leadership, entrepreneurial, and management skills to design, implement, and sustain social initiatives, working collaboratively with multidisciplinary teams and stakeholders.

Course Outcomes

CO1: Discuss the relevance of supervision in social work practice situations.

CO2: Identify and resolve ethical dilemmas in practice situations.

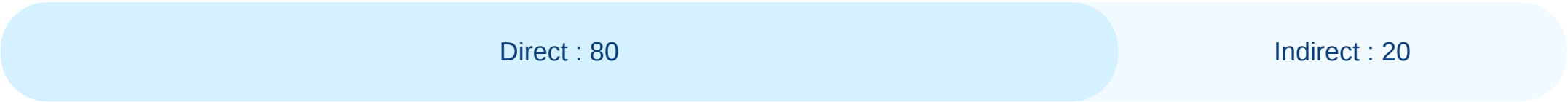
CO3: Develop curriculum for social work training

CO4: Apply supervision skills in practice situation

CO - PO - PSO Mapping

CO / PO / PSO	PO1	PO2	PO3	PO4	PO5	PO6	PO7	Average
CO1	2	2	2	2	-	-	-	2.00
CO2	2	-	2	3	-	2	-	2.25
CO3	2	2	-	-	2	-	2	2.00
CO4	-	2	2	2	-	-	2	2.00
Average	2	2	2	2.33	2	2	2	

CO Weightages Based on attainment type



CO targets & Attainment Levels

COs	Target	Direct Attainment levels				Indirect Attainment levels			
		Level 0	Level 1	Level 2	Level 3	Level 0	Level 1	Level 2	Level 3
CO1	2	0 - 1	2 - 40	41 - 50	51 - 100	0 - 1	2 - 40	41 - 50	51 - 100
CO2	2.25	0 - 1	2 - 40	41 - 50	51 - 100	0 - 1	2 - 40	41 - 50	51 - 100
CO3	2	0 - 1	2 - 40	41 - 50	51 - 100	0 - 1	2 - 40	41 - 50	51 - 100
CO4	2	0 - 1	2 - 40	41 - 50	51 - 100	0 - 1	2 - 40	41 - 50	51 - 100

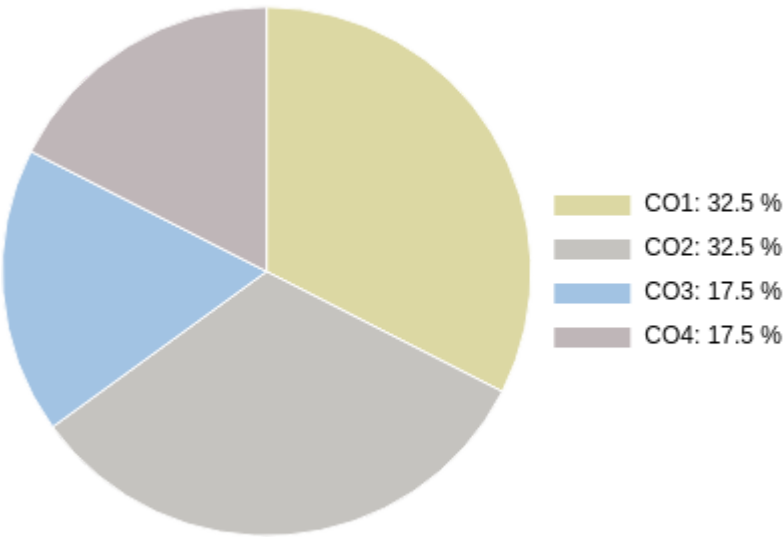
Formative (CIE) Assessments

Sr No	Exam Name	Total Marks	Threshold in %	CO1	CO2	CO3	CO4	Avg Attainment
1	Unit 1	15	50	3	3	3	3	3
2	Unit 2	10	50	3	3	3	3	3

Summative (SEE) Assessments

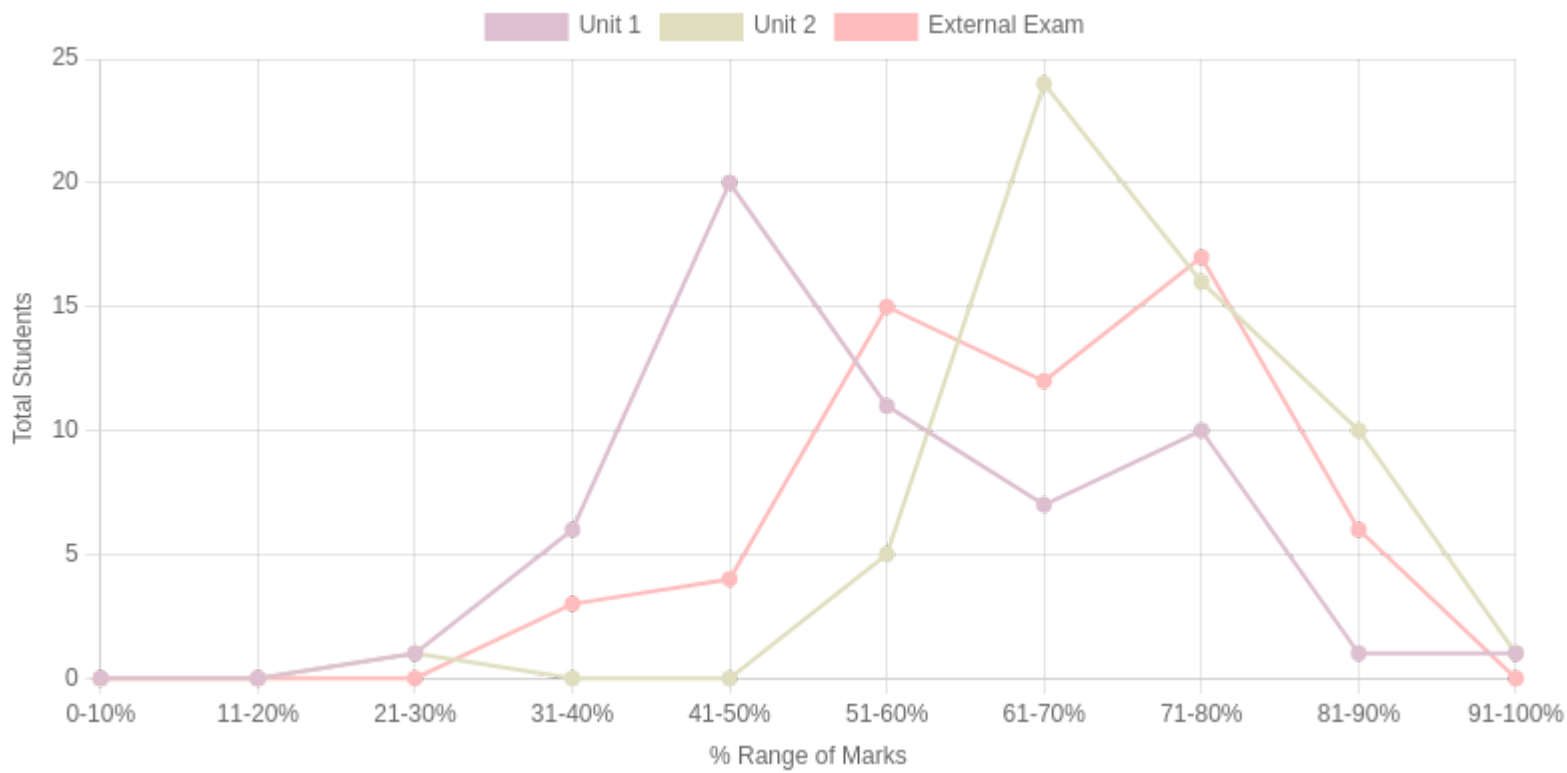
Sr No	Exam Name	Total Marks	Threshold in %	CO1	CO2	CO3	CO4	Avg Attainment
3	External Exam	25	50	3	3	3	3	3

CO Coverage



COs	CO1	CO2	CO3	CO4
50	16.25	16.25	8.75	8.75
%	32.5	32.5	17.5	17.5

Student % wise Distribution



Sr No	Assessment Title	Type	Total Marks	Avg Marks	Threshold in %	No of Students Scoring										Total Students Above Threshold
						0-10%	11-20%	21-30%	31-40%	41-50%	51-60%	61-70%	71-80%	81-90%	91-100%	
1	Unit 1	F	15	8.42	50	0	0	1	6	20	11	7	10	1	1	36
2	Unit 2	F	10	7.29	50	0	0	1	0	0	5	24	16	10	1	56
3	External Exam	S	25	13.85	50	0	0	0	3	4	15	12	17	6	0	51

Indirect Attainment

Feedback Details	CO wise analysis				
Course Exit Survey-MSW-Sem3-2025-2026 Type: Course Feedback Publish Date: 01/12/2025 Last Date: 04/12/2025 Feedback conduction: Backdated Total Students: 57 Responses Received: 0 Consider for Attainment: <input checked="" type="checkbox"/>	COS and Questions	CO1	CO2	CO3	CO4
		Q1	Q2	Q3	Q4
	Students Above Threshold	27/57	37/57	38/57	45/57
	Students Above Threshold in %	47.36%	64.91%	66.66%	78.94%
	Attainment After comparing with attainment Levels	2	3	3	3
	Average	2	3	3	3

CO Attainment

CO	Direct Attainment	Indirect Attainment	Final Attainment	Target	Gap	Justification
CO1	3	2	2.8	2	0.79	-
CO2	3	3	3	2.25	0.75	-
CO3	3	3	3	2	1	-
CO4	3	3	3	2	1	-

Average CO Attainment : 2.95

PO Direct Attainment

POs	PO1	PO2	PO3	PO4	PO5	PO6	PO7
Weighted Avg	2	2	2	2.33	2	2	2

Average CO Attainment : 2.95

POs	PO1	PO2	PO3	PO4	PO5	PO6	PO7
Calculation	2 (2.95) / 3	2 (2.95) / 3	2 (2.95) / 3	2.33 (2.95) / 3	2 (2.95) / 3	2 (2.95) / 3	2 (2.95) / 3
Direct Attainment	1.97	1.97	1.97	2.29	1.97	1.97	1.97

COURSE OVERVIEW | MSW



Course Exit Survey – Dashboard Summary

Program: MSW

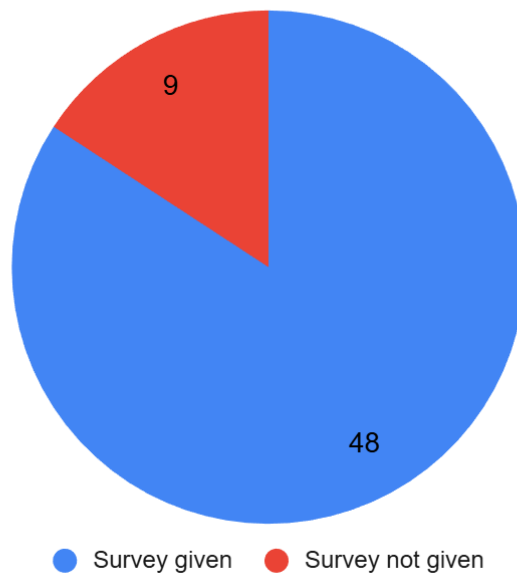
Semester and Year: Sem 3 AY 2025-2026

Course Code: CC 502

Course Name: Administration in Social Work

Response Count

Total Student - 57



A total of **45 students** responded to the survey. The feedback reflects **excellent learning achievement**, with **100% positive responses across all learning outcomes**, indicating strong conceptual clarity and application-oriented understanding.

Questions

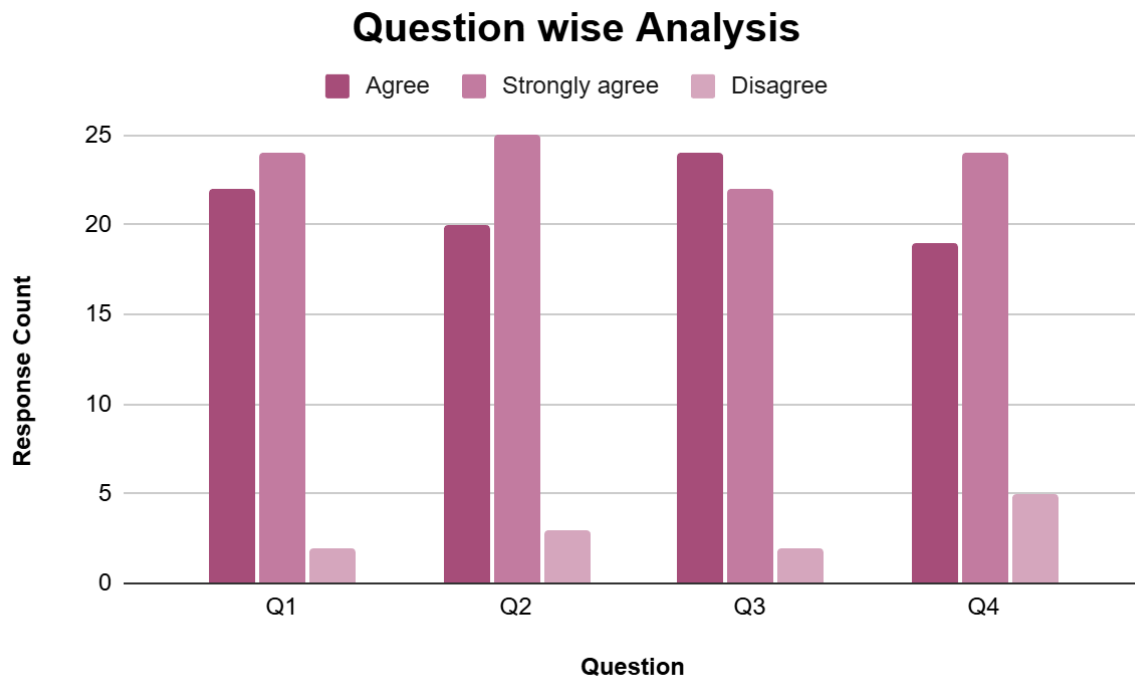
Q1.I was able to comprehend the governance of social welfare agencies and related legal provisions ?

Q2.I was able to apply human resource management, fundraising, communication and financial management in non-profit organisations ?

Q3.I was able to deliberate on the project management cycle, i.e Project Design, Implementation, Monitoring, and Evaluation ?

Q4. I was able to discuss the significance of CSR and Social Entrepreneurship in the context of roles of social workers beyond the traditional non-profit organisations ?

Outcome Code	Learning Outcome Focus	Strongly Agree (%)	Agree (%)	Disagree (%)	Positive (%)
Q1	Governance & legal provisions	26.7%	73.3%	0%	100%
Q2	NGO management functions	22.2%	77.8%	0%	100%
Q3	Project management cycle	26.7%	73.3%	0%	100%
Q4	CSR & social entrepreneurship	26.7%	73.3%	0%	100%



◇ **Q1 — Understanding Governance of Social Welfare Agencies & Legal Provisions**

Positive Responses (SA + A): 100%

- Students clearly comprehended governance structures and legal frameworks related to social welfare agencies.
 - No disagreement reported.
-

◇ Q2 — Applying HR, Fundraising, Communication & Financial Management in NGOs

Positive Responses: 100%

- Students demonstrated strong application-level understanding of management functions in non-profit organisations.
 - Reflects effective practice-oriented teaching.
-

◇ Q3 — Understanding the Project Management Cycle

(Design, Implementation, Monitoring & Evaluation)

Positive Responses: 100%

- Students confidently understood the full project cycle approach.
 - Indicates strong analytical and procedural clarity.
-

◇ Q4 — Understanding CSR & Social Entrepreneurship Beyond Traditional NGOs

Positive Responses: 100%

- Students clearly recognized emerging roles of social workers in CSR and social entrepreneurship.
- Shows successful integration of contemporary practice areas.

Key Insights (Executive Summary)

- ✓ **Perfect outcome achievement** across all learning outcomes.

- ✓ Strong understanding of **administrative, managerial, and legal aspects** of social welfare organisations.
- ✓ Excellent clarity on **project management processes** used in development work.
- ✓ High awareness of **emerging professional roles** in CSR and social entrepreneurship.
- ✓ No reported dissatisfaction, indicating strong course design and delivery.

Overall Dashboard Conclusion

The course demonstrates **exceptional effectiveness**, with **100% positive student feedback** across all learning outcomes. Students are well-prepared to take on administrative, managerial, and emerging professional roles within and beyond traditional non-profit organisations.

Course Exit Survey – Dashboard Summary

Program: MSW

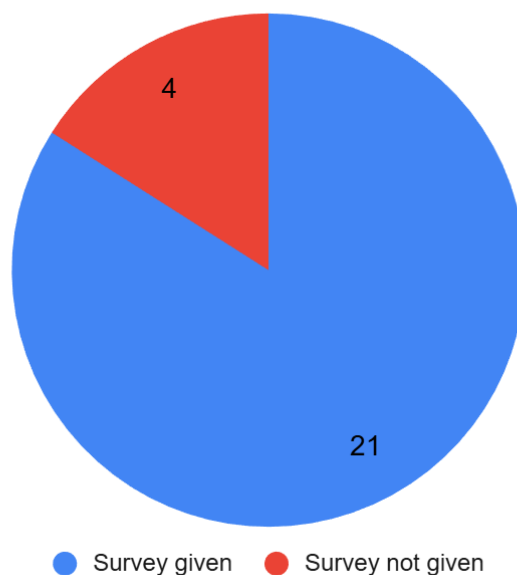
Semester and Year: Sem 3 AY 2025-2026

Course Code: DSE 501

Course Name: Counselling Interventions

Response Count

Total Student - 25



A total of **21 students** responded to the survey. The feedback indicates **very high attainment of counselling-related competencies**, with **100% positive responses across all learning outcomes** and **no disagreement reported**.

Questions

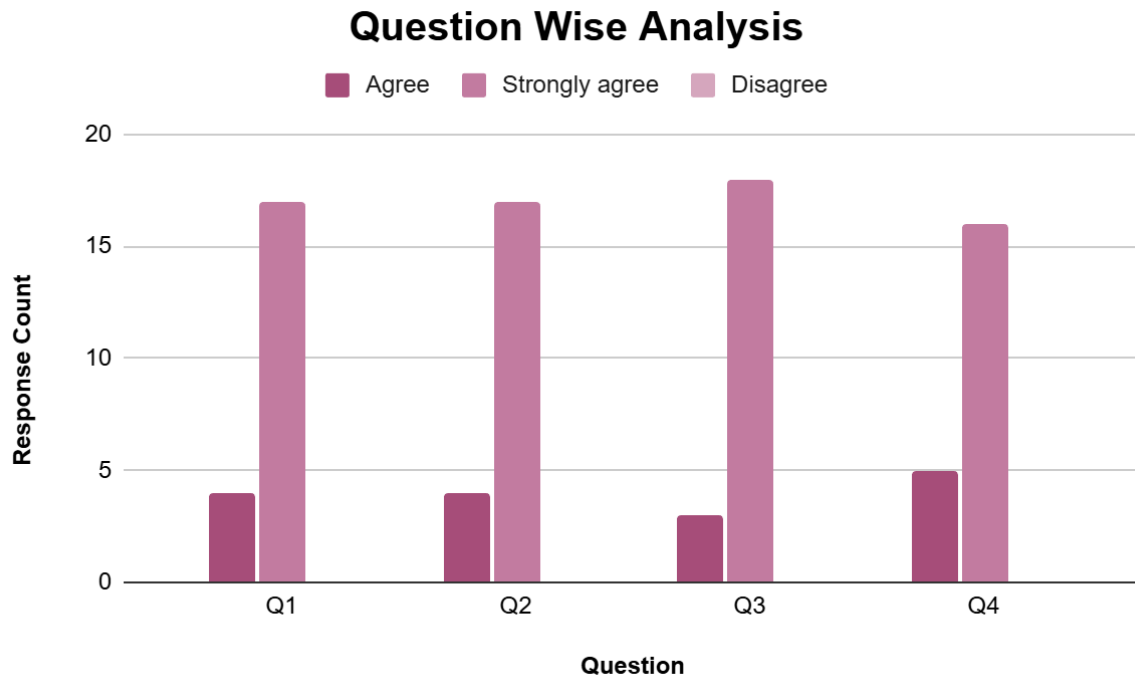
Q1.I was able to understand the theoretical and Practical dimensions of Counselling with specific reference to Skills, Process, Qualities of a counsellor , Ethics involved in Counselling

Q2.I was able to understand the relevance of counselling interventions in social work and the different Approaches to Counselling(Person Centred Approach, Feminist Therapy, Grief and Trauma Counselling).

Q3.I was able to understand the relevance of applying the ethical protocols related to counselling interventions ?

Q4.I was able to demonstrate sensitivity while dealing with clients from diverse backgrounds in my field setting based on the theoretical insights gained ?

Outcome Code	Learning Outcome Focus	Strongly Agree (%)	Agree (%)	Disagree (%)	Positive (%)
Q1	Counselling skills, process & ethics	19.0%	81.0%	0%	100%
Q2	Counselling interventions & approaches	19.0%	81.0%	0%	100%
Q3	Ethical protocols in counselling	14.3%	85.7%	0%	100%
Q4	Sensitivity in diverse field settings	23.8%	76.2%	0%	100%



◇ Q1 — Understanding Counselling Skills, Process, Ethics & Qualities

Positive Responses: 100%

- Students demonstrated a clear understanding of both theoretical and practical dimensions of counselling.
- Strong emphasis on counselling skills, ethical practice, and professional qualities.

◇ Q2 — Relevance of Counselling Interventions & Approaches

Positive Responses: 100%

- Learners understood the applicability of counselling in social work practice.
- Strong familiarity with Person-Centred Approach, Feminist Therapy, and Grief & Trauma Counselling.

◇ Q3 — Application of Ethical Protocols in Counselling

Positive Responses: 100%

- Students showed confidence in recognizing and applying ethical protocols during counselling interventions.
 - Reflects strong ethical orientation.
-

◇ Q4 — Sensitivity Towards Diverse Client Backgrounds

Positive Responses: 100%

- Students demonstrated sensitivity and cultural competence while working with diverse populations in field settings.
- Indicates effective integration of theory into practice.

Key Insights (Executive Summary)

- ✓ **Complete attainment** of counselling-related learning outcomes.
- ✓ Strong grounding in **ethical practice and professional sensitivity**.
- ✓ Effective linkage between **theory and field-based application**.
- ✓ Zero disagreement reflects **high course effectiveness and learner satisfaction**.

Overall Dashboard Conclusion

The Counselling in Social Work course demonstrates **excellent outcome attainment**, with **100% positive student feedback** across all learning outcomes. Students are well-prepared to apply counselling skills ethically and sensitively in diverse social work contexts.



Course Exit Survey – Dashboard Summary

Program: MSW

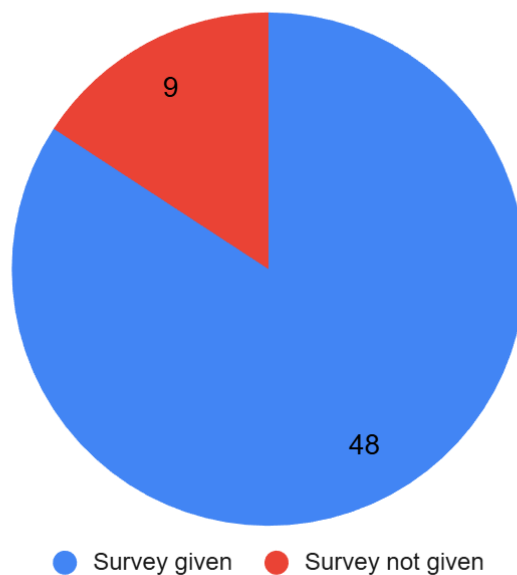
Semester and Year: Sem 3 AY 2025-2026

Course Code: CC 503

Course Name: Field Work

Response Count

Total Student - 57



A total of **45 students** responded to the survey. The feedback reflects **excellent learning achievement**, with **100% positive responses across all learning outcomes**, indicating strong conceptual clarity and application-oriented understanding.

Questions

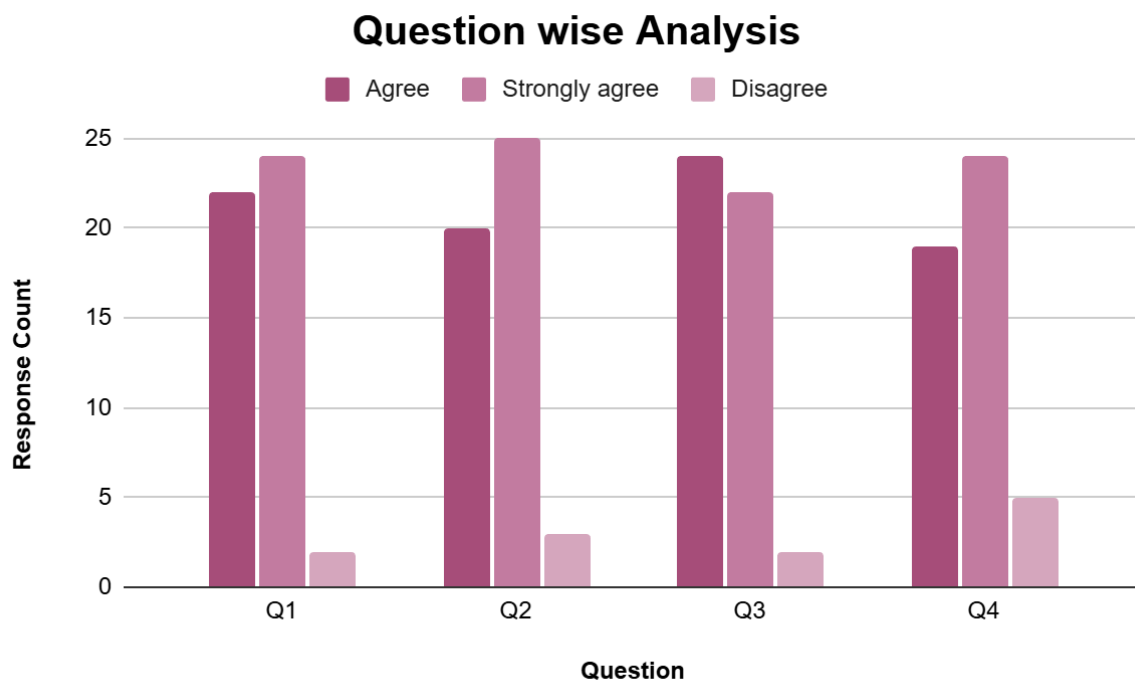
Q1. I was able to discuss the relevance of field work supervision in S.W. practice

Q2. I was able to understand & apply ethical theory linked to field work supervision.

Q3. I was able to develop curriculum & assessment rubrics for field work.

Q4. I was able to see the importance of IC, GCs and the role of field supervision & how to apply theoretical skills in practice situation.

Outcome Code	Learning Outcome Focus	Strongly Agree (%)	Agree (%)	Disagree (%)	Positive (%)
Q1	Governance & legal provisions	26.7%	73.3%	0%	100%
Q2	NGO management functions	22.2%	77.8%	0%	100%
Q3	Project management cycle	26.7%	73.3%	0%	100%
Q4	CSR & social entrepreneurship	26.7%	73.3%	0%	100%



◇ **Q1 — Relevance of Field Work Supervision in Social Work Practice**

Positive Responses (SA + A): 100%

- Students clearly understood the importance and relevance of supervision in social work practice.
 - No disagreement reported.
-

◇ Q2 — Understanding & Applying Ethical Theory in Field Work Supervision

Positive Responses: 100%

- Students demonstrated strong understanding and application of ethical principles in supervision.
 - Reflects effective integration of ethics with practice.
-

◇ Q3 — Developing Curriculum & Assessment Rubrics for Field Work

Positive Responses: 100%

- Students successfully developed skills related to curriculum planning and assessment design.
 - Indicates strong academic and evaluative competence.
-

◇ Q4 — Importance of IC, GCs & Role of Field Supervision in Applying Theory to Practice

Positive Responses: 100%

- Students clearly recognized the role of ICs, GCs, and supervision in translating theory into practice.
- Shows excellent understanding of supervision structures and applied learning.

Key Insights (Executive Summary)

- ✓ **Perfect learning achievement** across all outcomes.
- ✓ Strong understanding of **supervision frameworks and ethical responsibilities**.
- ✓ Excellent capability in **curriculum design and assessment planning** for field work.
- ✓ High clarity on **linking theory with practice through supervision mechanisms**.
- ✓ Zero dissatisfaction reflects strong course design and delivery.

Overall Dashboard Conclusion

The course demonstrates **exceptional effectiveness**, with **100% positive student feedback** across all learning outcomes. Students are well-equipped with supervisory, ethical, and evaluative competencies essential for effective field work supervision in social work education.



Course Exit Survey – Dashboard Summary

Program: MSW

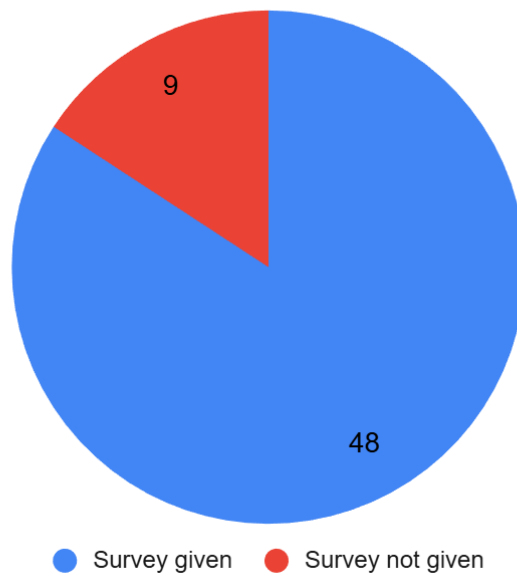
Semester and Year: Sem 3 AY 2025-2026

Course Code: RP 501

Course Name: Research Project – Part A

Response Count

Total Student - 57



A total of **45 students** responded to the survey. The feedback reflects **excellent research readiness**, with **100% positive responses across all five learning outcomes**, indicating strong competence in research planning, design, and tool construction.

Questions

Q1.I was able to identify a research topic relevant to social work and formulate research problem statement, objectives, research questions &/or hypotheses?

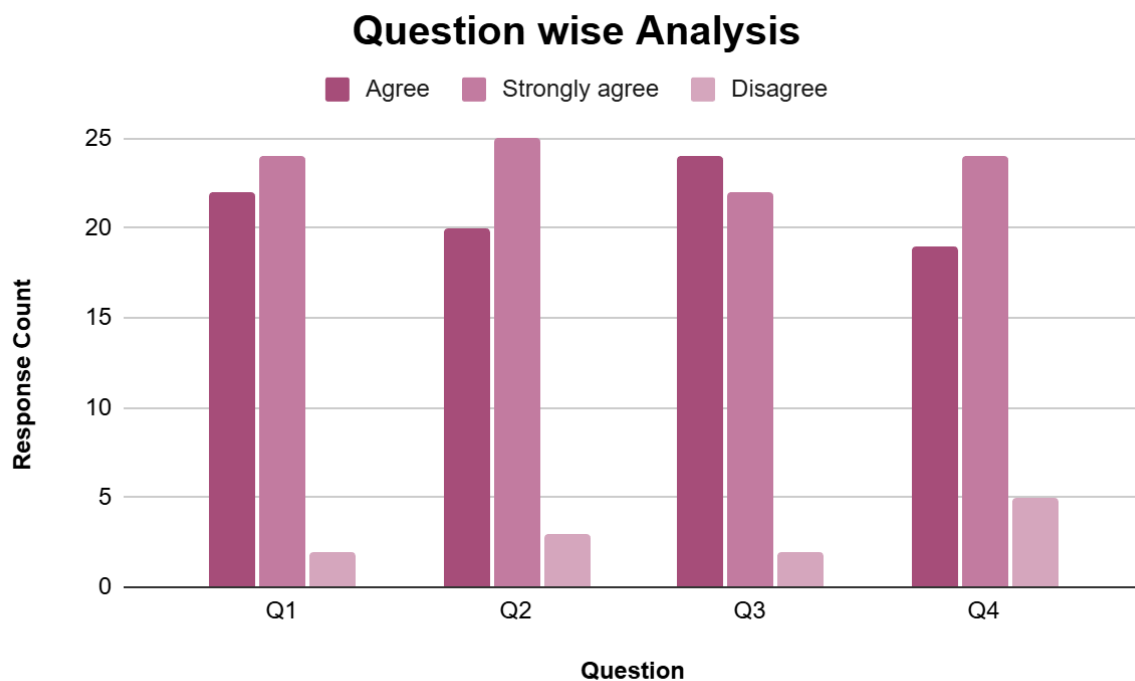
Q2.I was able to collate theoretically sound literature review?

Q3.I was able to formulate research objectives and define key concepts related to the research topic?

Q4.I was able to apply appropriate sampling and research design for the selected research topic?

Q5.I was able to construct data collection tools ?

Outcome Code	Learning Outcome Focus	Strongly Agree (%)	Agree (%)	Disagree (%)	Positive (%)
Q1	Governance & legal provisions	26.7%	73.3%	0%	100%
Q2	NGO management functions	22.2%	77.8%	0%	100%
Q3	Project management cycle	26.7%	73.3%	0%	100%
Q4	CSR & social entrepreneurship	26.7%	73.3%	0%	100%



◇ **Q1 — Identifying Research Topic & Formulating Research Framework**

Positive Responses (SA + A): 100%

- Students successfully identified relevant social work research topics and formulated problem statements, objectives, and research questions/hypotheses.
 - No disagreement reported.
-

◇ Q2 — Conducting a Theoretically Sound Literature Review

Positive Responses: 100%

- Students demonstrated strong ability to collate and review relevant theoretical literature.
 - Reflects sound academic research preparation.
-

◇ Q3 — Formulating Research Objectives & Defining Key Concepts

Positive Responses: 100%

- Students showed clarity in framing research objectives and conceptual definitions.
 - Indicates strong conceptual grounding.
-

◇ Q4 — Applying Appropriate Sampling & Research Design

Positive Responses: 100%

- Students effectively selected suitable research designs and sampling strategies.
 - Demonstrates methodological competence.
-

◇ Q5 — Constructing Data Collection Tools

Positive Responses: 100%

- Students confidently developed data collection instruments aligned with research objectives.
- Strong evidence of applied research skills.

Key Insights (Executive Summary)

- ✓ **Perfect learning achievement** across all research-related outcomes.
- ✓ Students are well-prepared in **research conceptualization, design, and execution**.
- ✓ Strong competence in **academic writing, methodology selection, and tool development**.
- ✓ Zero disagreement indicates effective pedagogy and strong research mentoring.

Overall Dashboard Conclusion

The course demonstrates **exceptional effectiveness**, with **100% positive student feedback** across all learning outcomes. Students are well-equipped to undertake independent social work research with strong methodological and analytical foundations.



Course Exit Survey – Dashboard Summary

Program: MSW

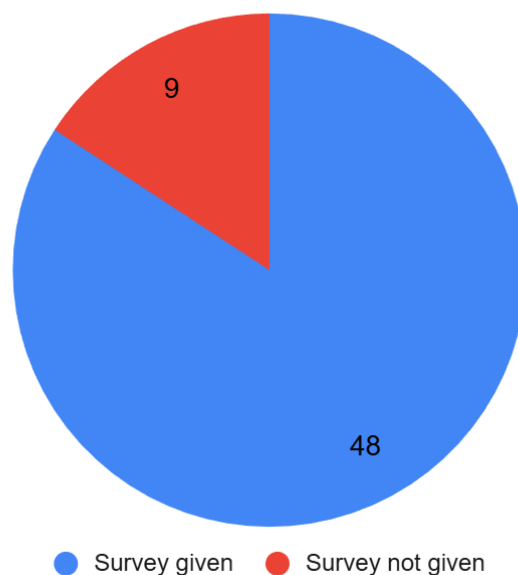
Semester and Year: Sem 3 AY 2025-2026

Course Code: CC 501

Course Name: Social Policy in Development Context

Response Count

Total Student - 57



A total of **48 students** responded. The feedback reflects **strong conceptual understanding**, good policy-level analysis, and moderate confidence in advocacy-related roles, with some scope for strengthening applied policy engagement.

Questions

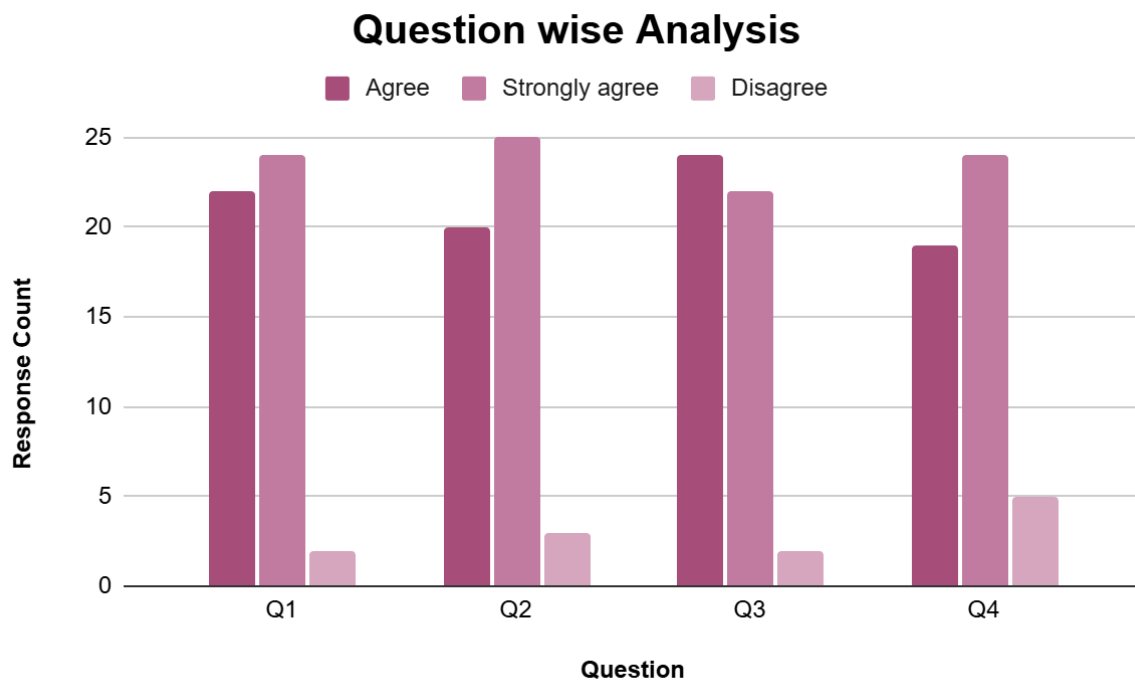
Q1.I was able to describe the evolution of the field of Welfare and Social Policy ?

Q2.I was able to explain the theoretical concepts and principles related to Social Policy ?

Q3.I was able to Deliberate on the planning and policy formulation process in the Indian context ?

Q4.I was able to distinguish the role of social worker in policy analysis & advocacy ?

Outcome Code	Learning Outcome Focus	Strongly Agree (%)	Agree (%)	Disagree (%)	Positive (%)
Q1	Environmental laws & protocols	53.8%	38.5%	7.7%	92.3%
Q2	Rural & urban socio-environmental challenges	53.8%	38.5%	7.7%	92.3%
Q3	Evaluate laws, regulators & NGOs	46.2%	46.2%	7.7%	92.3%
Q4	Apply sustainability frameworks	53.8%	38.5%	7.7%	92.3%
Q5	Analyse climate change & displacement	53.8%	38.5%	7.7%	92.3%



◇ Q1 — Understanding the Evolution of Welfare & Social Policy

Positive Responses (SA + A): 95.8%

- Students demonstrated strong understanding of historical developments in welfare and social policy.
 - **Only 4.2% disagreement**, indicating high clarity in foundational concepts.
-

◇ Q2 — Understanding Theoretical Concepts & Principles of Social Policy

Positive Responses: 93.8%

- Students showed good grasp of policy theories and guiding principles.
 - Minor disagreement (**6.2%**) suggests some theoretical areas may need reinforcement.
-

◇ Q3 — Understanding Policy Planning & Formulation in the Indian Context

Positive Responses: 95.8%

- Strong understanding of Indian policy planning mechanisms and processes.
 - Very minimal disagreement (**4.2%**).
-

◇ Q4 — Understanding the Role of Social Workers in Policy Analysis & Advocacy

Positive Responses: 89.6%

- Students generally understand advocacy and policy analysis roles.
- **Highest disagreement (10.4%)**, indicating scope for strengthening applied advocacy skills.

Key Insights (Executive Summary)

- ✓ Students have **excellent understanding of policy evolution and planning** (Q1 & Q3).
- ✓ **Theoretical grounding** in social policy is strong, though a few students need reinforcement (Q2).
- ✓ **Advocacy and policy analysis roles (Q4)** show comparatively lower confidence, highlighting a need for more applied exposure.
- ✓ Overall satisfaction remains high, with **nearly 90–96% positive responses** across outcomes.

Overall Dashboard Conclusion

The course demonstrates **strong effectiveness**, enabling students to understand welfare evolution, policy theory, and planning processes.

With **89%–96% positive responses**, students show solid readiness for policy-related roles, with scope to further enhance advocacy-oriented competencies.



Course Exit Survey – Dashboard Summary

Program: MSW

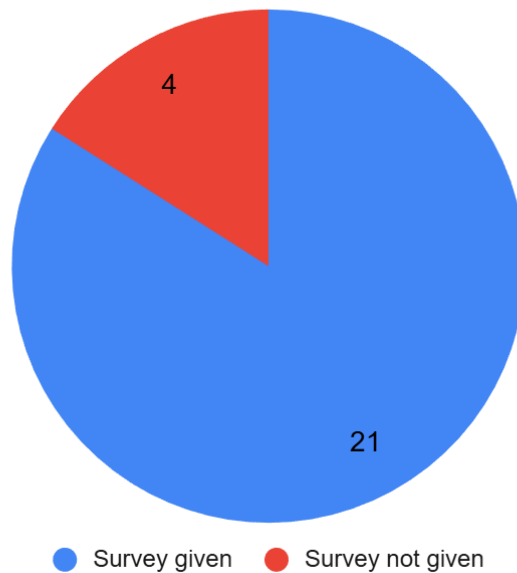
Semester and Year: Sem 3 AY 2025-2026

Course Code: DSE 503

Course Name: Social Work with Older Adults

Response Count

Total Student - 25



A total of **21 students** responded to the survey. The feedback indicates **very high attainment of counselling-related competencies**, with **100% positive responses across all learning outcomes** and **no disagreement reported**.

Questions

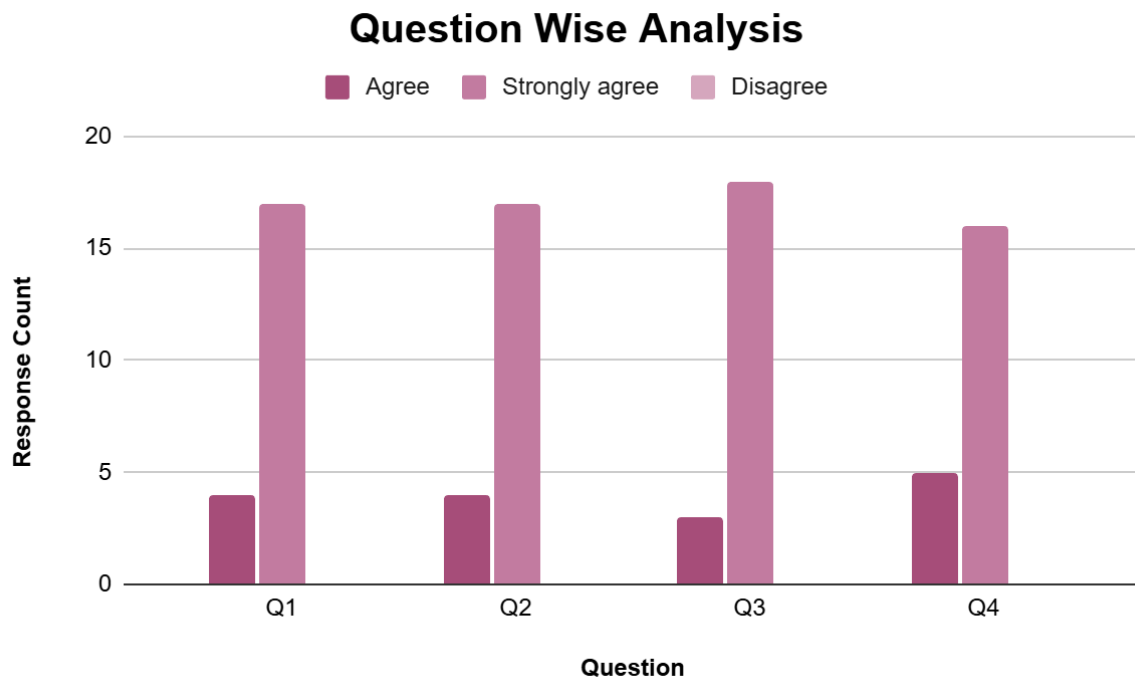
Q1. I was able to describe the biological, psychological and sociological aspects of normal ageing, issues and concerns?

Q2. I was able to examine current social policy, relevant legislation, and political, social, historical, and/or economic systems and their impacts on older individuals and communities while delivering services.

Q3. I was able to exemplify geriatric social work practice from an anti-oppressive, strengths-based perspective recognizing the capacity for resilience and growth of older individuals, their families, groups and communities?

Q4. I was able to demonstrate skills in case management, crisis intervention, community care and support, advocacy and creative interventions based on international/national frameworks, theories, policies and programmes?

Outcome Code	Learning Outcome Focus	Strongly Agree (%)	Agree (%)	Disagree (%)	Positive (%)
Q1	Counselling skills, process & ethics	19.0%	81.0%	0%	100%
Q2	Counselling interventions & approaches	19.0%	81.0%	0%	100%
Q3	Ethical protocols in counselling	14.3%	85.7%	0%	100%
Q4	Sensitivity in diverse field settings	23.8%	76.2%	0%	100%



◇ Q1 — Understanding Ageing: Bio-Psycho-Social Dimensions

Positive Responses: 100%

- Students demonstrated clear understanding of biological, psychological, and sociological aspects of normal ageing.
 - Issues and concerns of older persons were well comprehended.
-

◇ Q2 — Social Policy, Legislation & Systems Affecting Older Persons

Positive Responses: 100%

- Learners effectively examined social policies, legislation, and socio-economic systems impacting older individuals and communities.
 - Strong policy-practice linkage observed.
-

◇ Q3 — Anti-Oppressive & Strengths-Based Geriatric Practice

Positive Responses: 100%

- Students recognized resilience, strengths, and growth potential of older persons, families, and communities.
 - Reflects a rights-based and empowerment-oriented practice approach.
-

◇ Q4 — Applied Geriatric Social Work Skills

Positive Responses: 100%

- Students demonstrated competence in case management, crisis intervention, advocacy, community care, and creative interventions.
- Practice grounded in national and international frameworks and policies.

Key Insights (Executive Summary)

- ✓ **Complete achievement** of course learning outcomes.
- ✓ Strong integration of **policy, theory, and practice** in geriatric social work.
- ✓ High sensitivity toward **ageing, dignity, and rights of older persons**.
- ✓ Zero disagreement indicates **high instructional effectiveness**.

Overall Dashboard Conclusion

The course demonstrates **excellent outcome attainment**, with **100% positive student feedback** across all learning outcomes. Students are well-equipped to practice **ethical, strengths-based, and rights-oriented geriatric social work**.



Course Exit Survey – Dashboard Summary

Program: MSW

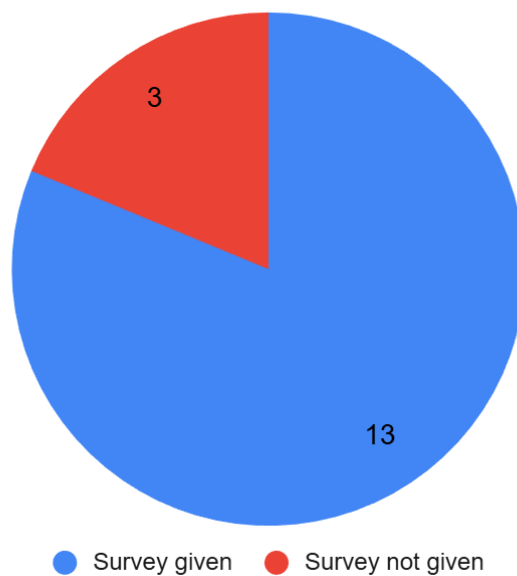
Semester and Year: Sem 3 AY 2025-2026

Course Code: DSE 502

Course Name: Sustainable Development and Environment

Response Analysis

Total Student - 19



A total of **13 students** responded to the survey. The feedback reflects **strong conceptual understanding**, good analytical ability, and high confidence in applying sustainability frameworks to real-world environmental challenges.

Questions

Q1.I was able to remember the key protocols, laws, and frameworks like UNFCCC, Indian Forests Act 2019, and PESA?

Q2.I was able to understanding the socio-environmental challenges in rural (land, water, forest) and urban (housing, waste management) contexts?

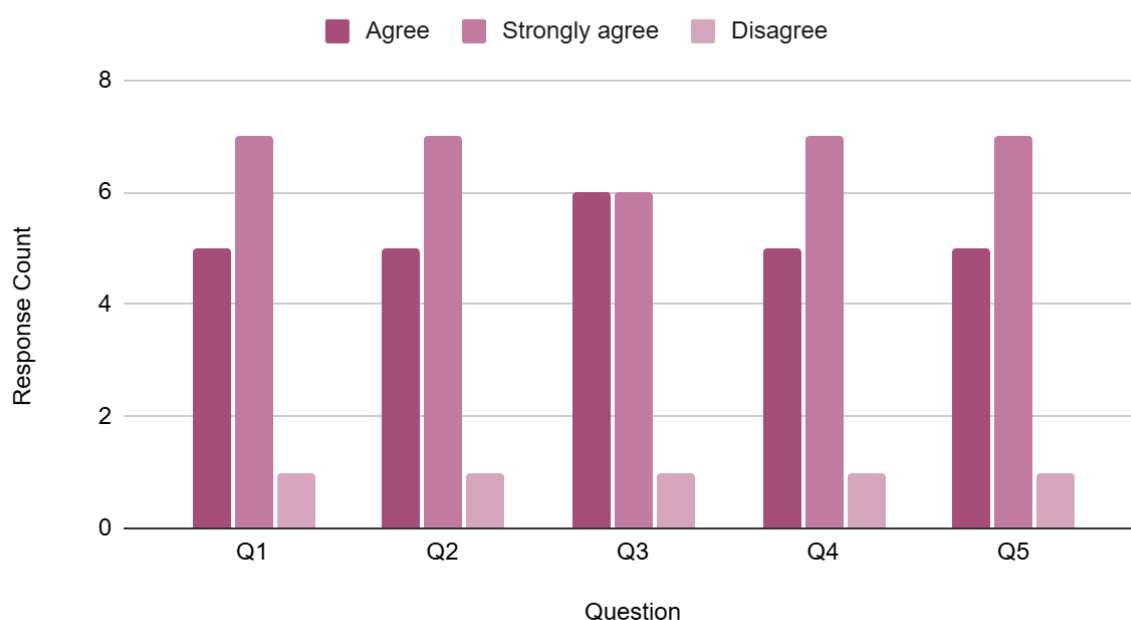
Q3.I was able to evaluating the effectiveness of environmental laws, regulatory bodies, and NGO interventions in fostering sustainability?

Q4.I was able to applying sustainable development frameworks, protocols, and government action plans to real-world scenarios ?

Q5.I was able to analyzing the impact of climate change, deforestation, and development-induced displacement?

Outcome Code	Learning Outcome Focus	Strongly Agree (%)	Agree (%)	Disagree (%)	Positive (%)
Q1	Environmental laws & protocols	53.8%	38.5%	7.7%	92.3%
Q2	Rural & urban socio-environmental challenges	53.8%	38.5%	7.7%	92.3%
Q3	Evaluate laws, regulators & NGOs	46.2%	46.2%	7.7%	92.3%
Q4	Apply sustainability frameworks	53.8%	38.5%	7.7%	92.3%
Q5	Analyse climate change & displacement	53.8%	38.5%	7.7%	92.3%

Question Wise Analysis



◇ Q1 — Understanding Environmental Protocols, Laws & Frameworks

(UNFCCC, Indian Forests Act 2019, PESA)

Positive Responses (SA + A): 92.3%

- Students demonstrated strong recall of key environmental governance instruments.
 - **Only 7.7% disagreement**, indicating minor scope for reinforcement of legal frameworks.
-

◇ Q2 — Understanding Socio-Environmental Challenges (Rural & Urban)

Positive Responses: 92.3%

- Students showed strong understanding of land, water, forest, housing, and waste-management challenges.
 - Good balance between rural and urban environmental perspectives.
-

◇ Q3 — Evaluating Environmental Laws, Regulatory Bodies & NGO Interventions

Positive Responses: 92.3%

- Students are capable of critically evaluating sustainability initiatives and institutional effectiveness.
 - Analytical skills are well developed with minimal disagreement.
-

◇ Q4 — Applying Sustainable Development Frameworks & Government Action Plans

Positive Responses: 92.3%

- Students confidently applied sustainability frameworks and action plans to real-world scenarios.
 - Indicates strong application-based learning.
-

◇ Q5 — Analysing Climate Change, Deforestation & Development-Induced Displacement

Positive Responses: 92.3%

- Students demonstrated strong analytical understanding of major environmental and social impacts.
- Reflects effective integration of environmental justice and development perspectives.

Key Insights (Executive Summary)

- ✓ **Consistently high learning achievement** across all outcomes (above 92%).
- ✓ Strong recall of **environmental laws and international frameworks** (Q1).
- ✓ Students effectively understand **rural–urban environmental challenges** (Q2).
- ✓ **Critical evaluation skills** for policies, institutions, and NGOs are well developed (Q3).
- ✓ High confidence in **applying sustainability frameworks and analysing climate impacts** (Q4 & Q5).
- ✓ Minimal disagreement (only 1 student per outcome).

Overall Dashboard Conclusion

The course demonstrates **excellent effectiveness**, with over **92% positive responses across all learning outcomes**. Students show strong readiness to understand, evaluate, and apply environmental governance principles and sustainability frameworks in real-world contexts.