



NIRF ranking in the band of 101 to 150 in the year 2025

NAAC Re-Accredited "A" Grade (3rd Cycle)  
with CGPA 3.53 on a Scale of 4 in 2015; and  
awarded Autonomy Status by UGC in 2019



# College of Social Work ( Empowered Autonomous ) Nirmala Niketan

**ACADEMIC YEAR  
2025- 2026**

**OUTCOME BASED  
EDUCATION REPORT  
BSW I I I**



## **Disability and Community Based Rehabilitation**

BSW

SEM - 5

### **1. Course Overview**

The course **Disability and Community Based Rehabilitation (VSC 301)** is offered to third-year BSW students to develop an understanding of disability, related challenges, legal frameworks, and community-based rehabilitation approaches. The course aligns with the institution's vision of promoting **human dignity, social justice, and inclusion of vulnerable populations**.

The Course Outcomes focus on understanding the concept and types of disability, analyzing challenges faced by persons with disabilities and their families, learning disability-related legislations and government schemes, and applying community-based rehabilitation (CBR) strategies for intervention planning. These outcomes are well aligned with Program Outcomes related to **ethical practice, problem-solving, social justice advocacy, and professional competence**.

The overall average Course Outcome attainment is **2.73**, indicating that students have satisfactorily achieved the expected learning levels through **direct assessment (80%)** and **indirect assessment (20%)** methods.

### **2. Purpose of the Course Overview Report**

The purpose of this Course Overview Report is to:

- Evaluate the effectiveness of course delivery
- Measure attainment of Course Outcomes
- Ensure alignment between Course Outcomes and Program Outcomes
- Identify strengths and learning gaps
- Support academic planning and continuous improvement

This report supports quality assurance and informed academic decision-making.

### 3. Gap Analysis

The gap analysis compares target attainment levels with actual student performance.

#### Key Observations:

- All **Course Outcomes (CO1–CO4)** have achieved attainment levels **above the target**, indicating strong conceptual understanding and application skills.
- **CO3 and CO4** show higher attainment, reflecting effective learning related to disability legislation and CBR intervention planning.
- Some Program Outcomes related to **multidisciplinary collaboration and lifelong learning** show comparatively lower attainment, as these require extended field exposure beyond classroom instruction.

#### Overall Gap Status:

The gaps identified are **minor and positive** and do not affect the overall effectiveness of the course.

### 4. Areas for Improvement / Action Plan

To further strengthen student learning, the following actions are proposed:

- Increase **field-based exposure** to disability and rehabilitation services
- Integrate **case studies of persons with disabilities and community interventions**
- Encourage **interaction with rehabilitation professionals and organizations**
- Strengthen reflective learning through **field reports and feedback sessions**

These steps will enhance practical understanding and community engagement skills.

## 5. Summary and Conclusion

The course **Disability and Community Based Rehabilitation (VSC 301)** is well-structured and effectively delivered. All Course Outcomes have been achieved beyond the target levels, indicating effective teaching strategies and assessment practices.

Overall, the course significantly contributes to developing **inclusive perspectives, ethical sensitivity, and professional competence** among BSW students and strongly supports the institution's mission of value-based social work education.

## Field Work V

BSW

SEM - 5

### 1. Course Overview

The course **Field Work V (Major 303)** is offered to third-year BSW students to provide intensive field-based learning and professional social work practice. The course strongly reflects the institution's vision of promoting **human dignity, social justice, and ethical professional values**.

The Course Outcomes focus on understanding psychosocial systems, applying problem-solving approaches, developing independent professional functioning, using administrative and supervisory skills, practicing leadership, understanding laws and policies, and developing fieldwork documentation skills. These outcomes are well aligned with Program Outcomes related to **professional competence, ethical practice, problem-solving, communication skills, and lifelong learning**.

The overall average Course Outcome attainment is **2.70**, indicating satisfactory achievement of expected learning levels. Attainment is measured through **direct assessment (80%)** and **indirect assessment (20%)**, ensuring comprehensive evaluation of student performance.

### 2. Purpose of the Course Overview Report

The purpose of this Course Overview Report is to:

- Review the effectiveness of fieldwork training

- Measure attainment of Course Outcomes
- Ensure alignment between Course Outcomes and Program Outcomes
- Identify strengths and learning gaps
- Support academic planning and continuous improvement

This report helps strengthen professional training and quality assurance in social work education.

### 3. Gap Analysis

The gap analysis compares target attainment levels with actual student performance.

#### Key Observations:

- **CO1 to CO4** show attainment levels above the target, indicating strong professional understanding and application in field settings.
- **CO5 to CO8** show slight variations due to lower indirect attainment, particularly in supervision, leadership, and documentation skills.
- Program Outcomes related to **multidisciplinary collaboration and lifelong learning** show comparatively lower attainment, as these require broader exposure and continued professional experience.

#### Overall Gap Status:

The gaps identified are **minor** and do not significantly affect the overall effectiveness of the course.

### 4. Areas for Improvement / Action Plan

To further strengthen learning outcomes, the following actions are proposed:

- Increase **structured supervision and mentoring sessions**
- Provide additional training in **fieldwork documentation and reporting**

- Strengthen opportunities for **leadership and administrative exposure**
- Encourage reflective learning through **field journals and feedback sessions**

These steps will enhance professional skills and practical competence.

## 5. Summary and Conclusion

The course **Field Work V (Major 303)** is effectively designed and implemented, providing strong practical exposure to professional social work practice. Most Course Outcomes have been achieved beyond the target levels, reflecting effective supervision and student engagement.

Overall, the course plays a critical role in developing **professional competence, ethical practice, and field readiness** among BSW students and strongly supports the institution's mission of producing skilled and socially committed professionals.

## Informal Sector

BSW

SEM - 5

### 1. Course Overview

The course **Informal Sector (FP 301)** is offered to third-year BSW students to develop an understanding of the informal labour sector and its role in the economy. The course aligns with the institution's vision of promoting **human dignity and social justice**, with special focus on vulnerable and marginalized workers.

The Course Outcomes focus on comparing formal and informal sectors, critically analysing informal labour using theoretical frameworks, developing advocacy skills for workers' rights, and undertaking a field-based project related to informal labour. These outcomes are well aligned with Program Outcomes related to **critical analysis, social justice advocacy, ethical practice, problem-solving, and communication skills**.

The overall average Course Outcome attainment is **3.00**, indicating a high level of student achievement. Attainment is measured through **direct assessment (80%)** and **indirect assessment (20%)**, reflecting effective teaching-learning and assessment practices.

## 2. Purpose of the Course Overview Report

The purpose of this Course Overview Report is to:

- Review the effectiveness of course delivery
- Measure attainment of Course Outcomes
- Ensure alignment between Course Outcomes and Program Outcomes
- Identify strengths and gaps in learning
- Support academic planning and continuous improvement

This report contributes to maintaining academic quality and accountability.

## 3. Gap Analysis

The gap analysis compares target attainment levels with actual student performance.

### Key Observations:

- All **Course Outcomes (CO1–CO4)** have achieved attainment levels **above the target**, indicating strong understanding of informal sector concepts and labour issues.
- High attainment in **CO3 and CO4** reflects effective learning in advocacy skills and field-based project work.
- Some Program Outcomes, particularly **PO7 (multidisciplinary collaboration)** and **PO8 (lifelong learning)**, show comparatively lower attainment, as these require broader exposure beyond the scope of a single course.

### Overall Gap Status:

No major gaps are identified. The gaps observed are **minor and do not affect overall course effectiveness**.

#### 4. Areas for Improvement / Action Plan

To further strengthen learning outcomes, the following actions are proposed:

- Increase **field exposure** to informal sector workplaces and organizations
- Integrate **case studies of local informal workers and unions**
- Encourage **policy-focused discussions and advocacy exercises**
- Strengthen reflective learning through **field reports and feedback**

These measures will enhance practical understanding and advocacy-oriented learning.

#### 5. Summary and Conclusion

The course **Informal Sector (FP 301)** is well-designed and effectively delivered. All Course Outcomes have been achieved beyond the target levels, demonstrating strong student engagement and effective assessment strategies.

Overall, the course plays an important role in developing **critical understanding, advocacy skills, and social justice orientation** among BSW students and strongly supports the institution's mission of value-based social work education.

#### Integrated Social Work Practice

BSW

SEM - 5

##### 1. Course Overview

The **Integrated Social Work Practice** course is offered to third-year BSW students to strengthen their ability to **integrate social work theories with field practice** at both micro and macro levels. The course emphasizes the application of **integrated practice models**, critical analysis of cases, and reflective professional learning.

The course outcomes focus on understanding social science theories, applying integrated practice models, analyzing case studies and field experiences, and developing a reflective seminar paper. The **average CO attainment is 2.72**, indicating good achievement of learning outcomes.



## 2. Purpose of the Course Overview Report

The purpose of this report is to:

- Assess the **attainment of advanced practice-oriented course outcomes**
- Evaluate the effectiveness of **integrated teaching, fieldwork, and assessment methods**
- Ensure alignment between **Course Outcomes and Program Outcomes**
- Identify strengths and learning gaps
- Support **continuous improvement in professional training**

## 3. Gap Analysis

The gap analysis compares **target attainment levels** with **actual student performance**.

### Key Observations:

- All COs have **exceeded their target attainment levels**, reflecting strong integration of theory and practice.
- Formative assessments show consistently high attainment, indicating effective continuous evaluation.
- Slightly lower performance in the external examination suggests a need for improved exam-oriented preparation.
- PO5, PO7, and PO8 show relatively lower attainment as the course emphasizes professional integration more than communication skills and lifelong learning components.

### Overall Gap Status:

No major gaps are identified; observed gaps are **minor and manageable**.

#### 4. Areas for Improvement / Action Plan

To further enhance course effectiveness:

- Strengthen exam-focused revision sessions
- Increase use of structured reflective writing
- Encourage interdisciplinary seminars and presentations
- Provide additional guidance on analytical writing and case evaluation

These steps will help improve summative assessment performance and higher-order learning.

#### 5. Summary and Conclusion

The **Integrated Social Work Practice** course is well-designed and effectively delivered, with strong alignment to program outcomes related to **professional competence, ethical practice, and evidence-based intervention**. Most course outcomes have been achieved beyond the target levels, indicating meaningful student learning.

Overall, the course plays a **key role in preparing students for integrated, reflective, and professional social work practice**.

#### Social Inclusion & Exclusion

BSW

SEM - 5

##### 1. Course Overview

The **Social Inclusion & Exclusion** course is offered to third-year BSW students to develop a critical understanding of **inequality, marginalization, and social justice**. The course focuses on concepts of inclusion and exclusion, policy frameworks, professional ethics, and intervention planning for marginalized groups.

The course outcomes emphasize conceptual clarity, policy analysis, ethical practice, and planning inclusive interventions. The **average CO attainment is 2.9**, indicating strong achievement of learning outcomes.

## 2. Purpose of the Course Overview Report

The purpose of this report is to:

- Evaluate the **achievement of course outcomes**
- Assess the effectiveness of **teaching–learning and assessment methods**
- Ensure alignment between **Course Outcomes and Program Outcomes**
- Identify strengths and areas for improvement
- Support **continuous academic quality enhancement**

## 3. Gap Analysis

The gap analysis compares **target attainment levels** with **actual student performance**.

### Key Observations:

- All course outcomes have **exceeded their target levels**, indicating effective course delivery.
- High attainment in formative assessments reflects strong student engagement and understanding.
- Slightly lower performance in CO4 during the external examination suggests a need for more practice in **intervention planning and application-based answers**.
- PO8 shows relatively lower attainment, as the course focuses more on policy and ethics than lifelong learning skills.

### Overall Gap Status:

The gaps identified are **minor and manageable**.

#### 4. Areas for Improvement / Action Plan

To further strengthen learning outcomes:

- Provide more **practice-based exercises** on designing inclusive interventions
- Use **current case studies** related to exclusion and discrimination
- Encourage **policy critique and group discussions**
- Strengthen answer-writing skills for application-oriented questions

#### 5. Summary and Conclusion

The **Social Inclusion & Exclusion** course is well-structured and effectively delivered, with strong alignment to program outcomes related to **social justice, ethical practice, and inclusive development**. Most course outcomes have been achieved beyond the expected levels, indicating meaningful student learning.

Overall, the course makes a significant contribution to preparing **socially sensitive and justice-oriented social work professionals**.

#### Social Work Research II

BSW

SEM - 5

##### 1. Course Overview

The **Social Work Research II** course is offered to third-year BSW students to develop **practical research skills** required for professional social work practice. The course emphasizes **ethical data collection, tool design, data analysis, and research reporting**, enabling students to apply research methods in real social work contexts.

The course outcomes focus on ethical research practices, data collection techniques, analysis, and report writing. The **average CO attainment is 2.72**, indicating good achievement of learning outcomes.

## 2. Purpose of the Course Overview Report

The purpose of this report is to:

- Assess the **attainment of research-based course outcomes**
- Evaluate the effectiveness of **practical and application-oriented teaching methods**
- Ensure alignment between **Course Outcomes and Program Outcomes**
- Identify strengths and learning gaps
- Support **continuous improvement in research training**

## 3. Gap Analysis

The gap analysis compares **target attainment levels** with **actual student performance**.

### Key Observations:

- CO2, CO3, and CO4 have **met or exceeded their target levels**, showing strong practical research skills.
- CO1 shows a marginal gap due to lower direct attainment in the external examination, indicating the need for reinforcement of **research ethics concepts**.
- High indirect attainment reflects positive student perception and confidence in research skills.
- PO1 and PO5 show comparatively lower attainment, as the course focuses more on technical research skills than social analysis and intervention planning.

### Overall Gap Status:

The gaps identified are **minor and manageable**.

#### 4. Areas for Improvement / Action Plan

To strengthen learning outcomes:

- Reinforce **research ethics** through case discussions
- Provide additional **hands-on practice** in tool design and data collection
- Strengthen **data interpretation and report writing workshops**
- Integrate small-scale **field-based research exercises**

#### 5. Summary and Conclusion

The **Social Work Research II** course is well-structured and effectively delivered, with strong alignment to program outcomes related to **evidence-based practice and professional research competence**. Most course outcomes have been achieved at or above target levels, indicating meaningful student learning.

Overall, the course plays a key role in developing **research-informed and ethically responsible social work professionals**.

### Women Studies

BSW

SEM - 5

#### 1. Course Overview

The **Women Studies** course is offered to third-year BSW students to develop a comprehensive understanding of **gender issues, women's movements, feminist perspectives, and gender-based inequalities**. The course emphasizes historical and contemporary perspectives on women's status and promotes critical analysis of gender oppression and empowerment.

The course outcomes focus on understanding women's status, theoretical perspectives, gender-based oppression, and evaluation of legislations and civil society initiatives. The **average CO attainment is 2.94**, indicating very strong achievement of learning outcomes.

## 2. Purpose of the Course Overview Report

The purpose of this report is to:

- Evaluate the **achievement of course outcomes**
- Assess the effectiveness of **teaching–learning and assessment strategies**
- Ensure alignment between **Course Outcomes and Program Outcomes**
- Identify strengths and areas for improvement
- Support **continuous academic quality enhancement**

## 3. Gap Analysis

The gap analysis compares **target attainment levels** with **actual student performance**.

### Key Observations:

- All course outcomes have **exceeded their target levels**, reflecting effective course delivery and high student engagement.
- Strong performance in both formative and summative assessments indicates good conceptual clarity and analytical skills.
- Slightly lower attainment in PO7 and PO8 suggests scope to further strengthen communication skills and lifelong learning orientation.
- No major learning gaps are observed at the course outcome level.

### Overall Gap Status:

There are **no critical gaps**; the course shows high effectiveness.

## 4. Areas for Improvement / Action Plan

To further enhance the course:

- Introduce **more field-based case discussions** on women's issues
- Encourage **student-led seminars and debates**
- Integrate **current policy analysis and legal updates**
- Promote **research-based assignments** on gender and social justice

## 5. Summary and Conclusion

The **Women Studies** course is well-designed and effectively delivered, with strong alignment to program outcomes related to **gender equity, social justice, and ethical practice**. The course has achieved all learning outcomes beyond the expected levels, indicating meaningful and impactful student learning.

Overall, the course significantly contributes to preparing **gender-sensitive and socially responsible social work professionals**.



## COURSE OVERVIEW

BSW | Batch 2023-2026 | THIRD YEAR 2025-2026



Disability and Community Based Rehabilitation

( VSC 301 )

Course Overview

---

## Vision

To contribute to building a new social order based on human dignity and social justice.

## Mission

**M1:** To work with a preferential option for the vulnerable and exploited, both locally and globally.

**M2:** To build a cadre of young, competent professionals having a global perspective and a strong value base of compassion, personal integrity, moderation, tolerance and self-respect.

---

## Program Outcome (PO)

Sr. No	PO	Competency	PI Number	PI's
1	Graduates will critically analyze social realities, understand their changing dynamics, and actively engage in processes that contribute to positive social transformation.	-	1.1	-
2	They will demonstrate an in-depth understanding of diverse communities, their unique challenges, and systemic inequalities, and advocate for social justice in their professional practice.	-	2.1	-
3	Graduates will apply appropriate social work methods and strategies to effectively work with individuals, groups, and communities, addressing various social issues.	-	3.1	-
4	They will embody professional social work values and ethics, ensuring integrity, respect, and accountability in all aspects of their practice.	-	4.1	-
5	Graduates will develop problem-solving abilities and intervention strategies tailored to the needs of marginalized and vulnerable populations.	-	5.1	-
6	They will integrate research and evidence-based knowledge to design, implement, and evaluate social work interventions effectively.	-	6.1	-
7	Graduates will exhibit strong communication skills and the ability to collaborate with multidisciplinary teams to address social challenges holistically.	-	7.1	-
8	They will demonstrate a commitment to lifelong learning, staying informed about emerging trends and practices in the field of social work.	-	8.1	-

---

## Course Outcomes

**CO1:** Comprehend the concept of disability, its types, causes and prevention.

**CO2:** Analyse challenges faced by persons with disability and their families

**CO3:** Discuss key disability legislations and government schemes.

**CO4:** Apply the concept and strategy of community-based rehabilitation to prepare intervention plan in the field of disability.

---

## CO - PO - PSO Mapping

CO / PO / PSO	PO1	PO2	PO3	PO4	PO5	PO6	PO7	PO8	Average
CO1	3	2	-	-	-	2	-	1	2.00
CO2	2	3	-	-	2	2	-	-	2.25
CO3	-	-	-	3	3	2	2	-	2.50
CO4	-	-	3	-	3	2	2	-	2.50
Average	2.5	2.5	3	3	2.66	2	2	1	

---

## Program Outcome (PO) to PI Mapping

PO	Competency	Indicator	CO1	CO2	CO3	CO4	Average
PO1			-	-	-	-	-
Average			-	-	-	-	-

---

PO	Competency	Indicator	CO1	CO2	CO3	CO4	Average
PO2			-	-	-	-	-
Average			-	-	-	-	-

---

PO	Competency	Indicator	CO1	CO2	CO3	CO4	Average
PO3			-	-	-	-	-
Average			-	-	-	-	-



---

PO	Competency	Indicator	CO1	CO2	CO3	CO4	Average
PO4			-	-	-	-	-
Average			-	-	-	-	-

---

PO	Competency	Indicator	CO1	CO2	CO3	CO4	Average
PO5			-	-	-	-	-
Average			-	-	-	-	-

---

PO	Competency	Indicator	CO1	CO2	CO3	CO4	Average
PO6			-	-	-	-	-
Average			-	-	-	-	-

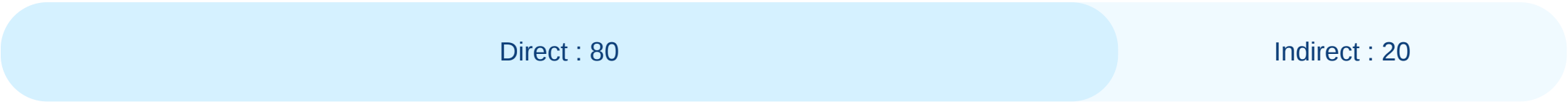
---

PO	Competency	Indicator	CO1	CO2	CO3	CO4	Average
PO7			-	-	-	-	-
Average			-	-	-	-	-

---

PO	Competency	Indicator	CO1	CO2	CO3	CO4	Average
PO8			-	-	-	-	-
Average			-	-	-	-	-

# CO Weightages Based on attainment type



## CO targets & Attainment Levels

COs	Target	Direct Attainment levels				Indirect Attainment levels			
		Level 0	Level 1	Level 2	Level 3	Level 0	Level 1	Level 2	Level 3
CO1	2	0 - 1	2 - 40	41 - 50	51 - 100	0 - 1	2 - 40	41 - 50	51 - 100
CO2	2.25	0 - 1	2 - 40	41 - 50	51 - 100	0 - 1	2 - 40	41 - 50	51 - 100
CO3	2.5	0 - 1	2 - 40	41 - 50	51 - 100	0 - 1	2 - 40	41 - 50	51 - 100
CO4	2.5	0 - 1	2 - 40	41 - 50	51 - 100	0 - 1	2 - 40	41 - 50	51 - 100

---

## Formative (CIE) Assessments

Sr No	Exam Name	Total Marks	Threshold in %	CO1	CO2	CO3	CO4	Avg Attainment
1	Unit 2/Assignment on CBR	10	50	3	3	3	3	3
2	Unit 1/Class Test	10	50	3	3	3	3	3

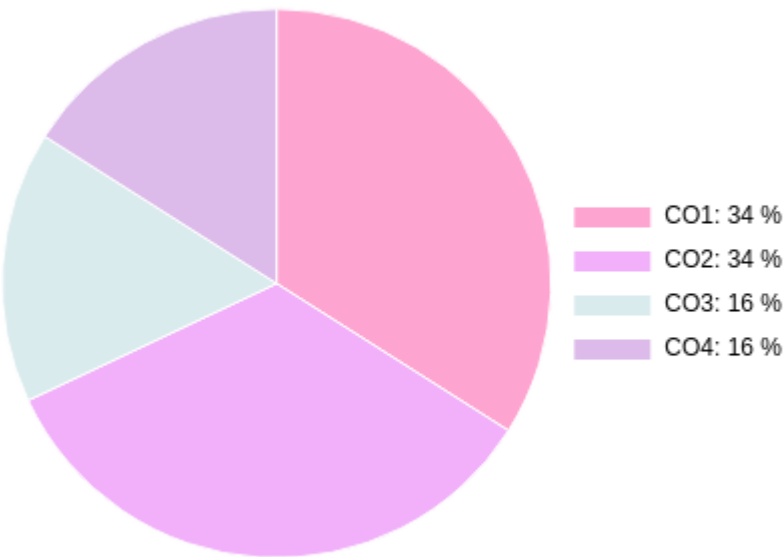
---

## Summative (SEE) Assessments

Sr No	Exam Name	Total Marks	Threshold in %	CO1	CO2	CO3	CO4	Avg Attainment
3	External Exam	30	50	1	1	3	3	2

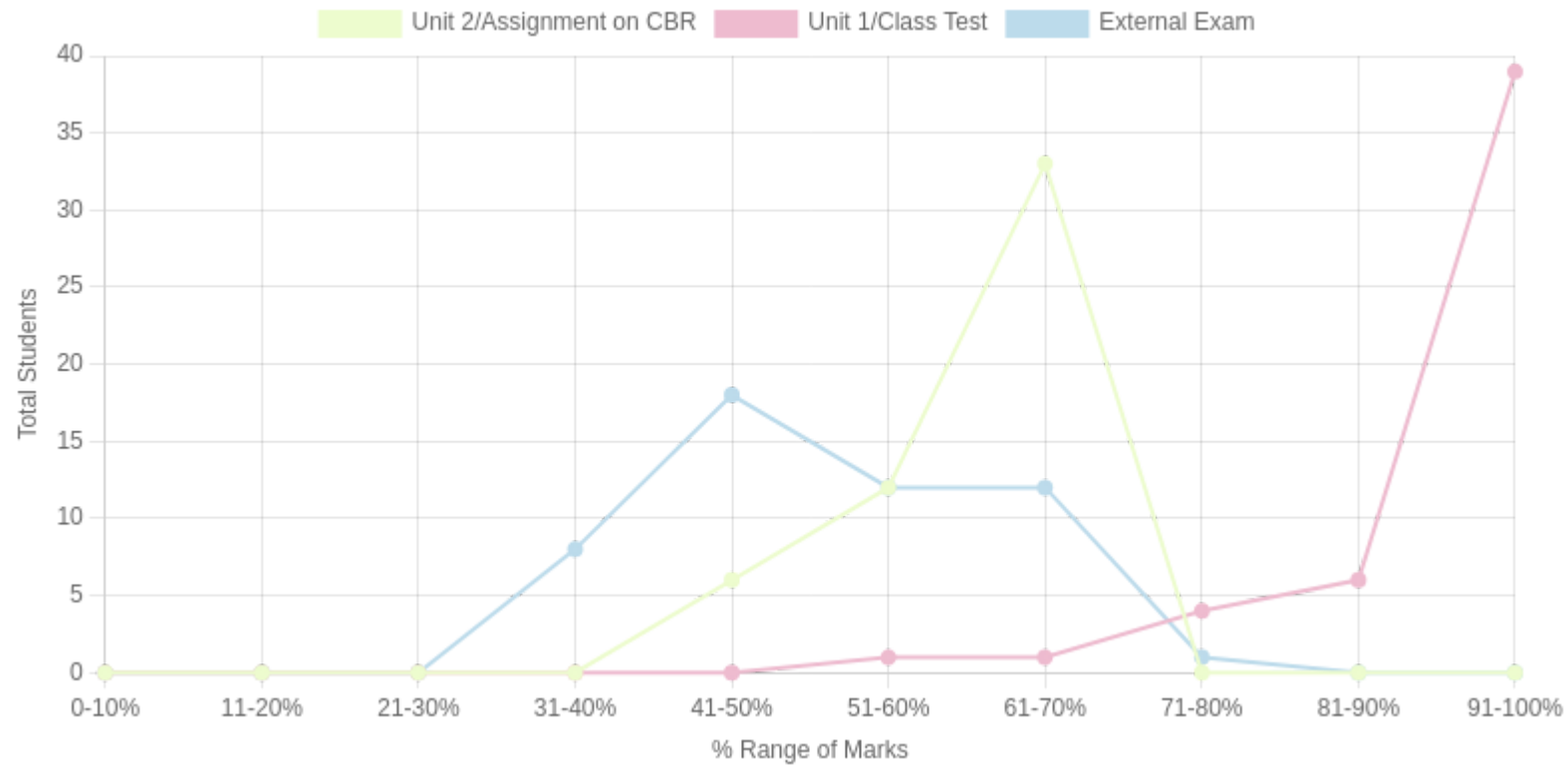


# CO Coverage



COs	CO1	CO2	CO3	CO4
50	17	17	8	8
%	34	34	16	16

## Student % wise Distribution



Sr No	Assessment Title	Type	Total Marks	Avg Marks	Threshold in %	No of Students Scoring										Total Students Above Threshold
						0-10%	11-20%	21-30%	31-40%	41-50%	51-60%	61-70%	71-80%	81-90%	91-100%	
1	Unit 2/Assignment on CBR	F	10	6.3	50	0	0	0	0	6	12	33	0	0	0	50
2	Unit 1/Class Test	F	10	9.39	50	0	0	0	0	0	1	1	4	6	39	51
3	External Exam	S	30	9.09	50	0	0	0	8	18	12	12	1	0	0	26

# Indirect Attainment

Feedback Details	CO wise analysis				
<b>Course Exit Survey-BSW-Sem5-2025-2026</b>  <b>Type:</b> Course Feedback <b>Publish Date:</b> 01/12/2025 <b>Last Date:</b> 04/12/2025 <b>Feedback conduction:</b> Backdated <b>Total Students:</b> 51 <b>Responses Received:</b> 43 <b>Consider for Attainment:</b> <input checked="" type="checkbox"/>	COS and Questions	CO1	CO2	CO3	CO4
		Q1	Q2	Q3	Q4
	Students Above Threshold	34/51	38/51	36/51	38/51
	Students Above Threshold in %	66.66%	74.5%	70.58%	74.5%
	Attainment After comparing with attainment Levels	3	3	3	3
	Average	3	3	3	3

---

# CO Attainment

CO	Direct Attainment	Indirect Attainment	Final Attainment	Target	Gap	Justification
CO1	2.33	3	2.46	2	0.46	-
CO2	2.33	3	2.46	2.25	0.2	-
CO3	3	3	3	2.5	0.5	-
CO4	3	3	3	2.5	0.5	-

Average CO Attainment : 2.73

# PO Direct Attainment

POs	PO1	PO2	PO3	PO4	PO5	PO6	PO7	PO8
Weighted Avg	2.5	2.5	3	3	2.66	2	2	1

Average CO Attainment : 2.73

POs	PO1	PO2	PO3	PO4	PO5	PO6	PO7	PO8
Calculation	2.5 (2.73) / 3	2.5 (2.73) / 3	3 (2.73) / 3	3 (2.73) / 3	2.66 (2.73) / 3	2 (2.73) / 3	2 (2.73) / 3	1 (2.73) / 3
Direct Attainment	2.27	2.27	2.73	2.73	2.42	1.82	1.82	0.91

---

## COURSE OVERVIEW | BSW

## COURSE OVERVIEW

BSW | Batch 2023-2026 | THIRD YEAR 2025-2026



Field Work V

( Major 303 )

Course Overview



---

## Vision

To contribute to building a new social order based on human dignity and social justice.

## Mission

**M1:** To work with a preferential option for the vulnerable and exploited, both locally and globally.

**M2:** To build a cadre of young, competent professionals having a global perspective and a strong value base of compassion, personal integrity, moderation, tolerance and self-respect.

---

## Program Outcome (PO)

Sr. No	PO	Competency	PI Number	PI's
1	Graduates will critically analyze social realities, understand their changing dynamics, and actively engage in processes that contribute to positive social transformation.	-	1.1	-
2	They will demonstrate an in-depth understanding of diverse communities, their unique challenges, and systemic inequalities, and advocate for social justice in their professional practice.	-	2.1	-
3	Graduates will apply appropriate social work methods and strategies to effectively work with individuals, groups, and communities, addressing various social issues.	-	3.1	-
4	They will embody professional social work values and ethics, ensuring integrity, respect, and accountability in all aspects of their practice.	-	4.1	-
5	Graduates will develop problem-solving abilities and intervention strategies tailored to the needs of marginalized and vulnerable populations.	-	5.1	-
6	They will integrate research and evidence-based knowledge to design, implement, and evaluate social work interventions effectively.	-	6.1	-
7	Graduates will exhibit strong communication skills and the ability to collaborate with multidisciplinary teams to address social challenges holistically.	-	7.1	-
8	They will demonstrate a commitment to lifelong learning, staying informed about emerging trends and practices in the field of social work.	-	8.1	-

---

## Course Outcomes

- CO1:** Comprehend psychosocial systems affecting the functioning of individuals, groups, and communities.
- CO2:** Apply an integrated approach to the problem-solving process.
- CO3:** Apply Field Instruction to increase independent functioning as a professional social worker.
- CO4:** Utilize administrative processes as effective strategies for service delivery.
- CO5:** Apply skills of supervision of paraprofessionals/volunteers and leadership in planning, implementing, and evaluating organization activities.
- CO6:** Exemplify professional attitudes and values and manifest the same in practice.
- CO7:** Examine laws, policies and programmes related to the issue the organization is working with
- CO8:** Apply skills of writing different kind of fieldwork recordings.

## CO - PO - PSO Mapping

CO / PO / PSO	PO1	PO2	PO3	PO4	PO5	PO6	PO7	PO8	Average
CO1	3	2	-	-	-	2	-	1	2.00
CO2	-	-	3	-	3	2	-	-	2.67
CO3	2	-	3	-	2	-	2	-	2.25
CO4	-	-	2	3	-	2	2	-	2.25
CO5	-	-	2	2	3	-	3	-	2.50
CO6	2	-	-	3	-	-	2	2	2.25
CO7	3	2	-	-	-	3	-	-	2.67
CO8	-	-	-	2	-	3	2	2	2.25
Average	2.5	2	2.5	2.5	2.66	2.4	2.2	1.66	

---

## Program Outcome (PO) to PI Mapping

PO	Competency	Indicator	CO1	CO2	CO3	CO4	CO5	CO6	CO7	CO8	Average
PO1			-	-	-	-	-	-	-	-	-
Average			-	-	-	-	-	-	-	-	-

---

PO	Competency	Indicator	CO1	CO2	CO3	CO4	CO5	CO6	CO7	CO8	Average
PO2			-	-	-	-	-	-	-	-	-
Average			-	-	-	-	-	-	-	-	-

---

PO	Competency	Indicator	CO1	CO2	CO3	CO4	CO5	CO6	CO7	CO8	Average
PO3			-	-	-	-	-	-	-	-	-
Average			-	-	-	-	-	-	-	-	-

---

PO	Competency	Indicator	CO1	CO2	CO3	CO4	CO5	CO6	CO7	CO8	Average
PO4			-	-	-	-	-	-	-	-	-
Average			-	-	-	-	-	-	-	-	-



---

PO	Competency	Indicator	CO1	CO2	CO3	CO4	CO5	CO6	CO7	CO8	Average
PO5			-	-	-	-	-	-	-	-	-
Average			-	-	-	-	-	-	-	-	-

---

PO	Competency	Indicator	CO1	CO2	CO3	CO4	CO5	CO6	CO7	CO8	Average
PO6			-	-	-	-	-	-	-	-	-
Average			-	-	-	-	-	-	-	-	-

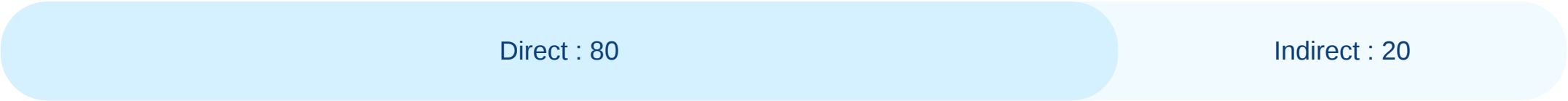
---

PO	Competency	Indicator	CO1	CO2	CO3	CO4	CO5	CO6	CO7	CO8	Average
PO7			-	-	-	-	-	-	-	-	-
Average			-	-	-	-	-	-	-	-	-

---

PO	Competency	Indicator	CO1	CO2	CO3	CO4	CO5	CO6	CO7	CO8	Average
PO8			-	-	-	-	-	-	-	-	-
Average			-	-	-	-	-	-	-	-	-

# CO Weightages Based on attainment type



## CO targets & Attainment Levels

COs	Target	Direct Attainment levels				Indirect Attainment levels			
		Level 0	Level 1	Level 2	Level 3	Level 0	Level 1	Level 2	Level 3
CO1	2	0 - 1	2 - 40	41 - 50	51 - 100	0 - 1	2 - 40	41 - 50	51 - 100
CO2	2.66	0 - 1	2 - 40	41 - 50	51 - 100	0 - 1	2 - 40	41 - 50	51 - 100
CO3	2.25	0 - 1	2 - 40	41 - 50	51 - 100	0 - 1	2 - 40	41 - 50	51 - 100
CO4	2.25	0 - 1	2 - 40	41 - 50	51 - 100	0 - 1	2 - 40	41 - 50	51 - 100
CO5	2.5	0 - 1	2 - 40	41 - 50	51 - 100	0 - 1	2 - 40	41 - 50	51 - 100
CO6	2.25	0 - 1	2 - 40	41 - 50	51 - 100	0 - 1	2 - 40	41 - 50	51 - 100
CO7	2.66	0 - 1	2 - 40	41 - 50	51 - 100	0 - 1	2 - 40	41 - 50	51 - 100
CO8	2.25	0 - 1	2 - 40	41 - 50	51 - 100	0 - 1	2 - 40	41 - 50	51 - 100

---

# Formative (CIE) Assessments

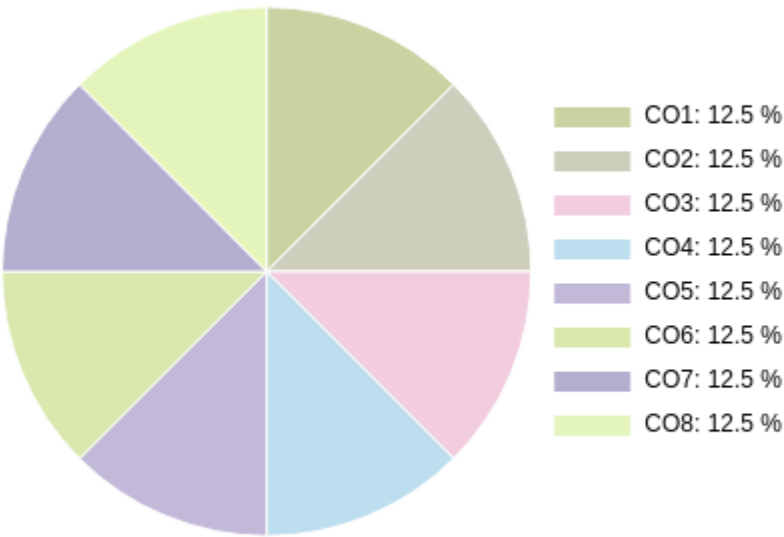
Sr No	Exam Name	Total Marks	Threshold in %	CO1	CO2	CO3	CO4	CO5	CO6	CO7	CO8	Avg Attainment
-------	-----------	-------------	----------------	-----	-----	-----	-----	-----	-----	-----	-----	----------------

---

## Summative (SEE) Assessments

Sr No	Exam Name	Total Marks	Threshold in %	CO1	CO2	CO3	CO4	CO5	CO6	CO7	CO8	Avg Attainment
1	External Exam	100	50	3	3	3	3	3	3	3	3	3

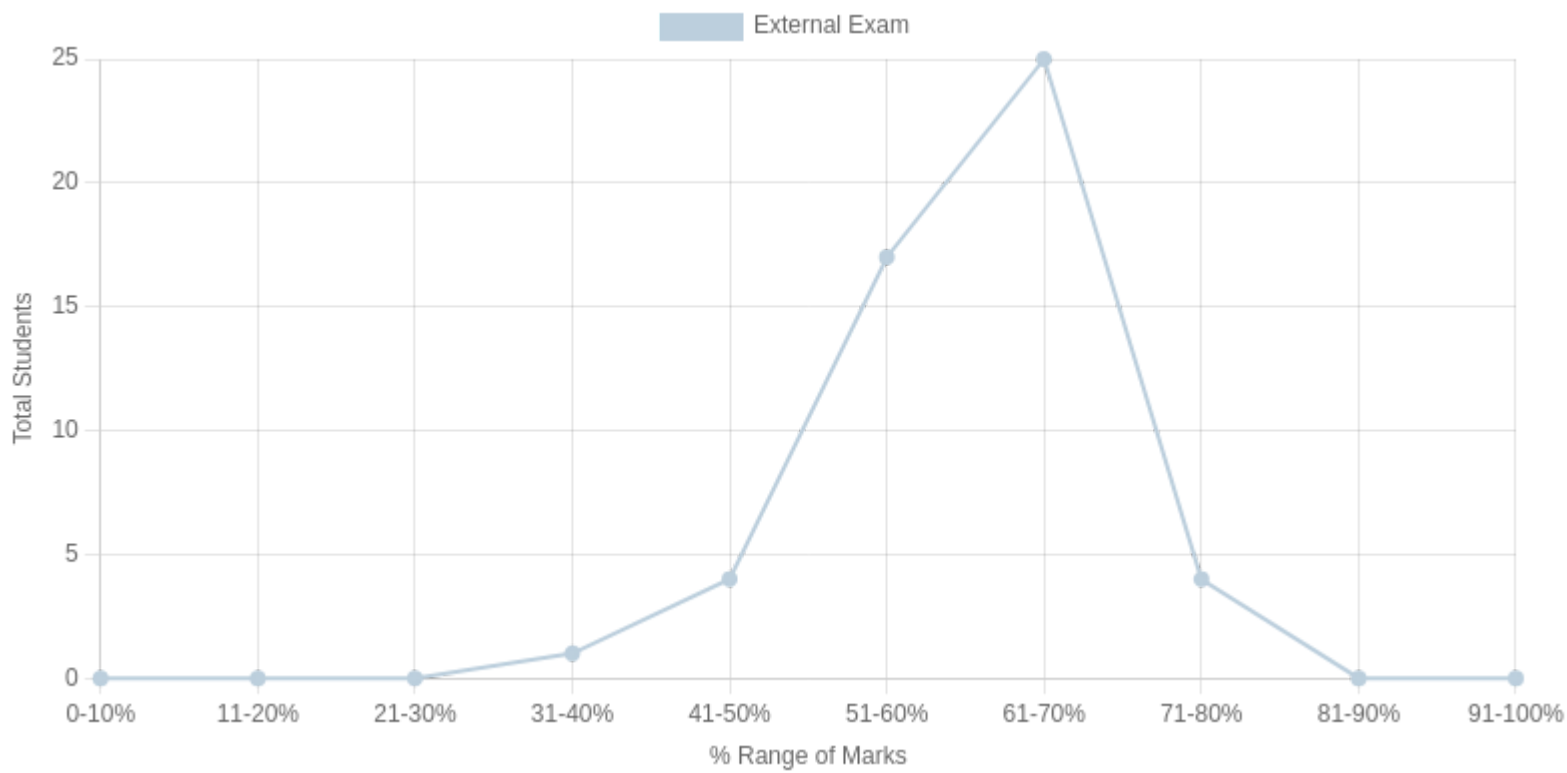
# CO Coverage



COs	CO1	CO2	CO3	CO4	CO5	CO6	CO7	CO8
100	12.5	12.5	12.5	12.5	12.5	12.5	12.5	12.5
%	12.5	12.5	12.5	12.5	12.5	12.5	12.5	12.5



# Student % wise Distribution



Sr No	Assessment Title	Type	Total Marks	Avg Marks	Threshold in %	No of Students Scoring										Total Students Above Threshold
						0-10%	11-20%	21-30%	31-40%	41-50%	51-60%	61-70%	71-80%	81-90%	91-100%	
1	External Exam	S	100	60.68	50	0	0	0	1	4	17	25	4	0	0	47

# Indirect Attainment

Feedback Details	CO wise analysis				
<b>Course Exit Survey-BSW-Sem5-2025-2026</b>  <b>Type:</b> Course Feedback <b>Publish Date:</b> 01/12/2025 <b>Last Date:</b> 04/12/2025 <b>Feedback conduction:</b> Backdated <b>Total Students:</b> 51 <b>Responses Received:</b> 43 <b>Consider for Attainment:</b> <input checked="" type="checkbox"/>	COS and Questions	CO1	CO2	CO3	CO4
		Q1	Q2	Q3	Q4
	Students Above Threshold	34/51	38/51	36/51	38/51
	Students Above Threshold in %	66.66%	74.5%	70.58%	74.5%
	Attainment After comparing with attainment Levels	3	3	3	3
	Average	3	3	3	3

# CO Attainment

CO	Direct Attainment	Indirect Attainment	Final Attainment	Target	Gap	Justification
CO1	3	3	3	2	1	-
CO2	3	3	3	2.66	0.33	-
CO3	3	3	3	2.25	0.75	-
CO4	3	3	3	2.25	0.75	-
CO5	3	0	2.4	2.5	-0.1	-
CO6	3	0	2.4	2.25	0.14	-
CO7	3	0	2.4	2.66	-0.26	-
CO8	3	0	2.4	2.25	0.14	-

Average CO Attainment : 2.7

# PO Direct Attainment

POs	PO1	PO2	PO3	PO4	PO5	PO6	PO7	PO8
Weighted Avg	2.5	2	2.5	2.5	2.66	2.4	2.2	1.66

Average CO Attainment : 2.7

POs	PO1	PO2	PO3	PO4	PO5	PO6	PO7	PO8
Calculation	2.5 (2.7) / 3	2 (2.7) / 3	2.5 (2.7) / 3	2.5 (2.7) / 3	2.66 (2.7) / 3	2.4 (2.7) / 3	2.2 (2.7) / 3	1.66 (2.7) / 3
Direct Attainment	2.25	1.80	2.25	2.25	2.39	2.16	1.98	1.49

---

## COURSE OVERVIEW | BSW

## COURSE OVERVIEW

BSW | Batch 2023-2026 | THIRD YEAR 2025-2026



Informal Sector

( FP 301 )

Course Overview

---

## Vision

To contribute to building a new social order based on human dignity and social justice.

## Mission

**M1:** To work with a preferential option for the vulnerable and exploited, both locally and globally.

**M2:** To build a cadre of young, competent professionals having a global perspective and a strong value base of compassion, personal integrity, moderation, tolerance and self-respect.



---

## Program Outcome (PO)

Sr. No	PO	Competency	PI Number	PI's
1	Graduates will critically analyze social realities, understand their changing dynamics, and actively engage in processes that contribute to positive social transformation.	-	1.1	-
2	They will demonstrate an in-depth understanding of diverse communities, their unique challenges, and systemic inequalities, and advocate for social justice in their professional practice.	-	2.1	-
3	Graduates will apply appropriate social work methods and strategies to effectively work with individuals, groups, and communities, addressing various social issues.	-	3.1	-
4	They will embody professional social work values and ethics, ensuring integrity, respect, and accountability in all aspects of their practice.	-	4.1	-
5	Graduates will develop problem-solving abilities and intervention strategies tailored to the needs of marginalized and vulnerable populations.	-	5.1	-
6	They will integrate research and evidence-based knowledge to design, implement, and evaluate social work interventions effectively.	-	6.1	-
7	Graduates will exhibit strong communication skills and the ability to collaborate with multidisciplinary teams to address social challenges holistically.	-	7.1	-
8	They will demonstrate a commitment to lifelong learning, staying informed about emerging trends and practices in the field of social work.	-	8.1	-

---

## Course Outcomes

**CO1:** Compare and contrast formal and informal labour and sectors.

**CO2:** Critically analyse informal labour dynamics using various theoretical frameworks

**CO3:** Exhibit skills to advocate for policies enhancing informal workers' rights and welfare.

**CO4:** Develop a field based project on informal labour

# CO - PO - PSO Mapping

CO / PO / PSO	PO1	PO2	PO3	PO4	PO5	PO6	PO7	PO8	Average
CO1	3	2	-	-	-	2	-	1	2.00
CO2	2	3	-	-	-	3	-	1	2.25
CO3	-	2	-	3	3	-	2	-	2.50
CO4	2	-	3	-	2	2	-	-	2.25
Average	2.33	2.33	3	3	2.5	2.33	2	1	

---

## Program Outcome (PO) to PI Mapping

PO	Competency	Indicator	CO1	CO2	CO3	CO4	Average
PO1			-	-	-	-	-
Average			-	-	-	-	-

---

PO	Competency	Indicator	CO1	CO2	CO3	CO4	Average
PO2			-	-	-	-	-
Average			-	-	-	-	-

---

PO	Competency	Indicator	CO1	CO2	CO3	CO4	Average
PO3			-	-	-	-	-
Average			-	-	-	-	-

---

PO	Competency	Indicator	CO1	CO2	CO3	CO4	Average
PO4			-	-	-	-	-
Average			-	-	-	-	-

---

PO	Competency	Indicator	CO1	CO2	CO3	CO4	Average
PO5			-	-	-	-	-
Average			-	-	-	-	-



---

PO	Competency	Indicator	CO1	CO2	CO3	CO4	Average
PO6			-	-	-	-	-
Average			-	-	-	-	-

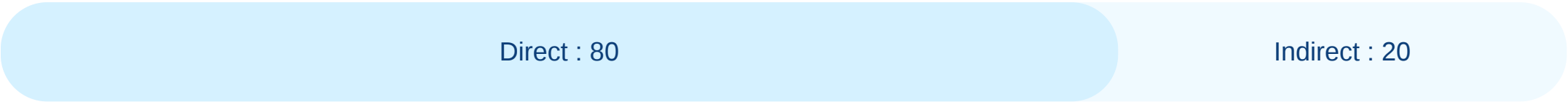
---

PO	Competency	Indicator	CO1	CO2	CO3	CO4	Average
PO7			-	-	-	-	-
Average			-	-	-	-	-

---

PO	Competency	Indicator	CO1	CO2	CO3	CO4	Average
PO8			-	-	-	-	-
Average			-	-	-	-	-

# CO Weightages Based on attainment type



## CO targets & Attainment Levels

COs	Target	Direct Attainment levels				Indirect Attainment levels			
		Level 0	Level 1	Level 2	Level 3	Level 0	Level 1	Level 2	Level 3
CO1	2	0 - 1	2 - 40	41 - 50	51 - 100	0 - 1	2 - 40	41 - 50	51 - 100
CO2	2.25	0 - 1	2 - 40	41 - 50	51 - 100	0 - 1	2 - 40	41 - 50	51 - 100
CO3	2.5	0 - 1	2 - 40	41 - 50	51 - 100	0 - 1	2 - 40	41 - 50	51 - 100
CO4	2.25	0 - 1	2 - 40	41 - 50	51 - 100	0 - 1	2 - 40	41 - 50	51 - 100

---

## Formative (CIE) Assessments

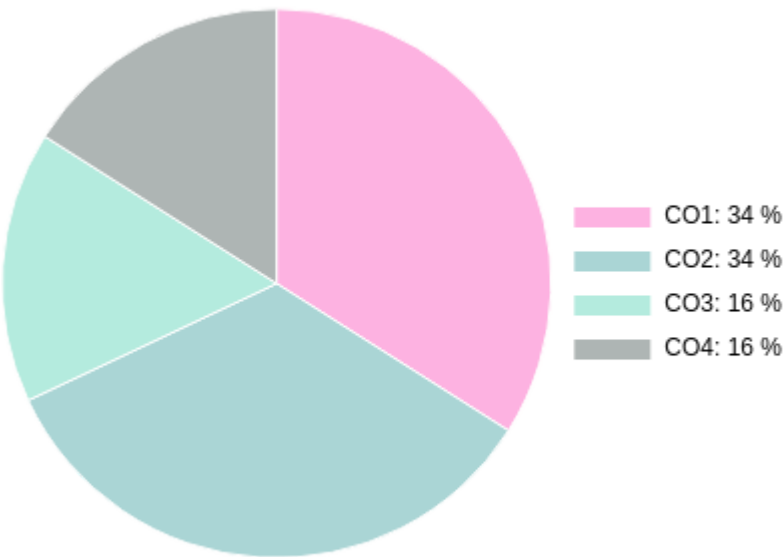
Sr No	Exam Name	Total Marks	Threshold in %	CO1	CO2	CO3	CO4	Avg Attainment
1	Unit 1/Class Test	10	50	3	3	3	3	3
2	Unit 2/Project Work	10	50	3	3	3	3	3

---

## Summative (SEE) Assessments

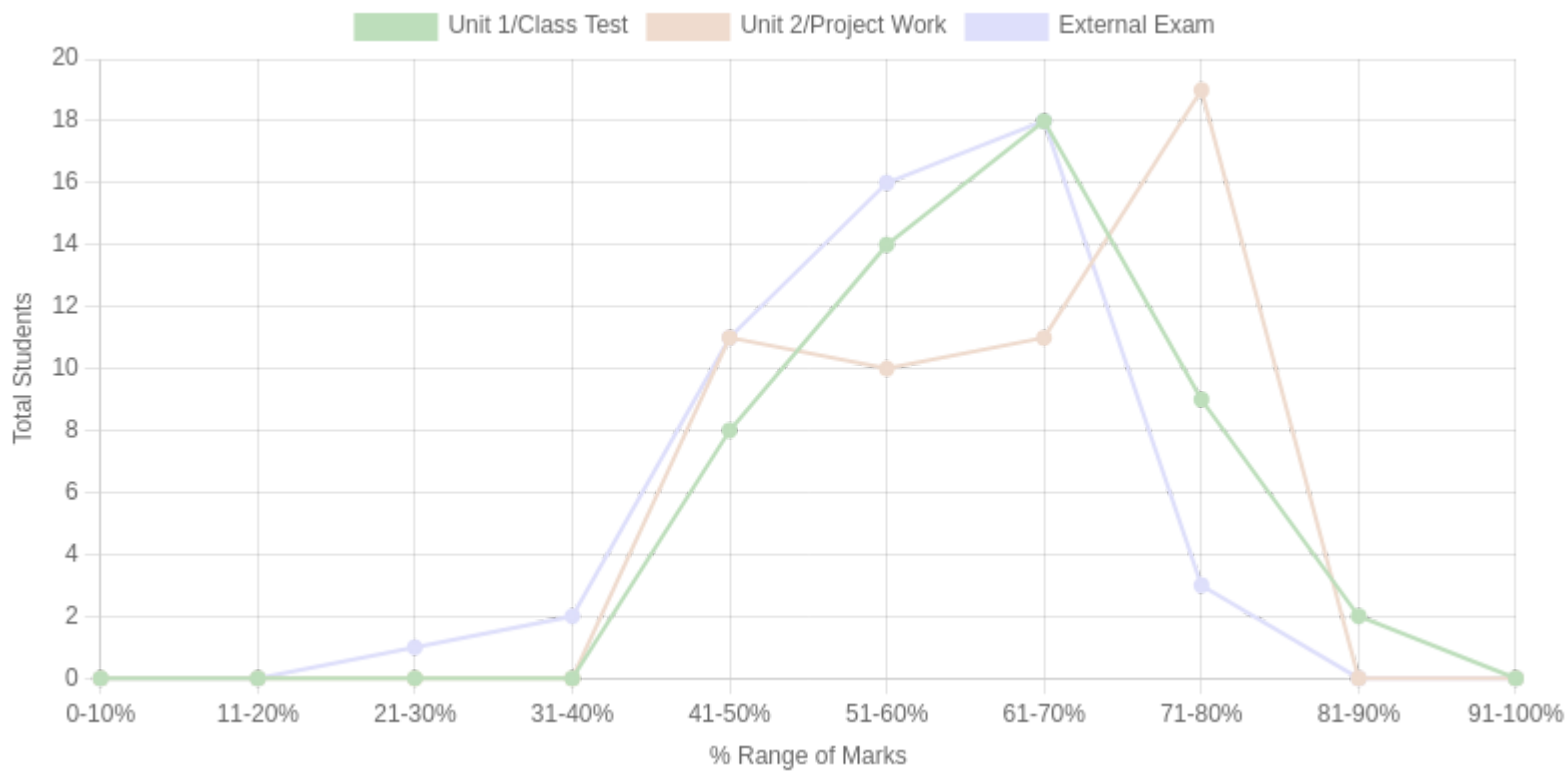
Sr No	Exam Name	Total Marks	Threshold in %	CO1	CO2	CO3	CO4	Avg Attainment
3	External Exam	30	50	3	3	3	3	3

# CO Coverage



COs	CO1	CO2	CO3	CO4
50	17	17	8	8
%	34	34	16	16

# Student % wise Distribution





Sr No	Assessment Title	Type	Total Marks	Avg Marks	Threshold in %	No of Students Scoring										Total Students Above Threshold
						0-10%	11-20%	21-30%	31-40%	41-50%	51-60%	61-70%	71-80%	81-90%	91-100%	
1	Unit 1/Class Test	F	10	6.66	50	0	0	0	0	8	14	18	9	2	0	51
2	Unit 2/Project Work	F	10	6.74	50	0	0	0	0	11	10	11	19	0	0	51
3	External Exam	S	30	12.24	50	0	0	1	2	11	16	18	3	0	0	43

# Indirect Attainment

Feedback Details	CO wise analysis				
<b>Course Exit Survey-BSW-Sem5-2025-2026</b>  <b>Type:</b> Course Feedback <b>Publish Date:</b> 01/12/2025 <b>Last Date:</b> 04/12/2025 <b>Feedback conduction:</b> Backdated <b>Total Students:</b> 51 <b>Responses Received:</b> 43 <b>Consider for Attainment:</b> <input checked="" type="checkbox"/>	COS and Questions	CO1	CO2	CO3	CO4
		Q1	Q2	Q3	Q4
	Students Above Threshold	34/51	38/51	36/51	38/51
	Students Above Threshold in %	66.66%	74.5%	70.58%	74.5%
	Attainment After comparing with attainment Levels	3	3	3	3
	Average	3	3	3	3

---

## CO Attainment

CO	Direct Attainment	Indirect Attainment	Final Attainment	Target	Gap	Justification
CO1	3	3	3	2	1	-
CO2	3	3	3	2.25	0.75	-
CO3	3	3	3	2.5	0.5	-
CO4	3	3	3	2.25	0.75	-

Average CO Attainment : 3

# PO Direct Attainment

POs	PO1	PO2	PO3	PO4	PO5	PO6	PO7	PO8
Weighted Avg	2.33	2.33	3	3	2.5	2.33	2	1

Average CO Attainment : 3

POs	PO1	PO2	PO3	PO4	PO5	PO6	PO7	PO8
Calculation	2.33 (3) / 3	2.33 (3) / 3	3 (3) / 3	3 (3) / 3	2.5 (3) / 3	2.33 (3) / 3	2 (3) / 3	1 (3) / 3
Direct Attainment	2.33	2.33	3.00	3.00	2.50	2.33	2.00	1.00

---

## COURSE OVERVIEW | BSW

## COURSE OVERVIEW

BSW | Batch 2023-2026 | THIRD YEAR 2025-2026



Integrated Social Work Practice

( Major 302 )

Course Overview

---

## Vision

To contribute to building a new social order based on human dignity and social justice.

## Mission

**M1:** To work with a preferential option for the vulnerable and exploited, both locally and globally.

**M2:** To build a cadre of young, competent professionals having a global perspective and a strong value base of compassion, personal integrity, moderation, tolerance and self-respect.

---

## Program Outcome (PO)

Sr. No	PO	Competency	PI Number	PI's
1	Graduates will critically analyze social realities, understand their changing dynamics, and actively engage in processes that contribute to positive social transformation.	-	1.1	-
2	They will demonstrate an in-depth understanding of diverse communities, their unique challenges, and systemic inequalities, and advocate for social justice in their professional practice.	-	2.1	-
3	Graduates will apply appropriate social work methods and strategies to effectively work with individuals, groups, and communities, addressing various social issues.	-	3.1	-
4	They will embody professional social work values and ethics, ensuring integrity, respect, and accountability in all aspects of their practice.	-	4.1	-
5	Graduates will develop problem-solving abilities and intervention strategies tailored to the needs of marginalized and vulnerable populations.	-	5.1	-
6	They will integrate research and evidence-based knowledge to design, implement, and evaluate social work interventions effectively.	-	6.1	-
7	Graduates will exhibit strong communication skills and the ability to collaborate with multidisciplinary teams to address social challenges holistically.	-	7.1	-
8	They will demonstrate a commitment to lifelong learning, staying informed about emerging trends and practices in the field of social work.	-	8.1	-



---

## Course Outcomes

**CO1:** Recall and explain key social science theories and describe their relevance to social work practice at micro and macro levels.

**CO2:** Apply integrated social work practice models, including Person-in-Environment (PIE), strengths-based, and crisis intervention frameworks, to develop culturally responsive interventions for individuals, families, and communities.

**CO3:** Analyze case studies and fieldwork experiences to evaluate the effectiveness of Integrative Short-Term Treatment (ISTT) and Integrated Social Work Practice (ISWP) in addressing client needs and systemic challenges.

**CO4:** Develop a reflective seminar paper by identifying core field problems, integrating relevant social work theories, and designing appropriate interventions, adhering to professional standards of practice.

---

## CO - PO - PSO Mapping

CO / PO / PSO	PO1	PO2	PO3	PO4	PO5	PO6	PO7	PO8	Average
CO1	3	2	-	-	-	3	-	2	2.50
CO2	2	3	3	-	2	-	-	-	2.50
CO3	3	2	-	2	2	3	-	-	2.40
CO4	2	-	-	3	-	3	2	2	2.40
Average	2.5	2.33	3	2.5	2	3	2	2	

---

## Program Outcome (PO) to PI Mapping

PO	Competency	Indicator	CO1	CO2	CO3	CO4	Average
PO1			-	-	-	-	-
Average			-	-	-	-	-

---

PO	Competency	Indicator	CO1	CO2	CO3	CO4	Average
PO2			-	-	-	-	-
Average			-	-	-	-	-

---

PO	Competency	Indicator	CO1	CO2	CO3	CO4	Average
PO3			-	-	-	-	-
Average			-	-	-	-	-

---

PO	Competency	Indicator	CO1	CO2	CO3	CO4	Average
PO4			-	-	-	-	-
Average			-	-	-	-	-

---

PO	Competency	Indicator	CO1	CO2	CO3	CO4	Average
PO5			-	-	-	-	-
Average			-	-	-	-	-

---

PO	Competency	Indicator	CO1	CO2	CO3	CO4	Average
PO6			-	-	-	-	-
Average			-	-	-	-	-



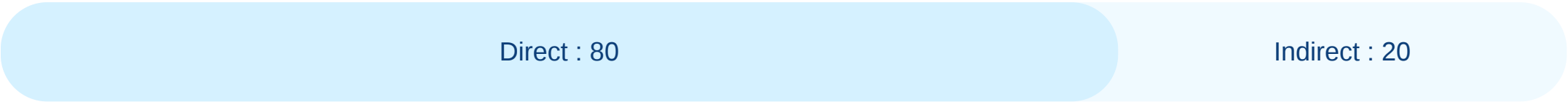
---

PO	Competency	Indicator	CO1	CO2	CO3	CO4	Average
PO7			-	-	-	-	-
Average			-	-	-	-	-

---

PO	Competency	Indicator	CO1	CO2	CO3	CO4	Average
PO8			-	-	-	-	-
Average			-	-	-	-	-

# CO Weightages Based on attainment type



## CO targets & Attainment Levels

COs	Target	Direct Attainment levels				Indirect Attainment levels			
		Level 0	Level 1	Level 2	Level 3	Level 0	Level 1	Level 2	Level 3
CO1	2.5	0 - 1	2 - 40	41 - 50	51 - 100	0 - 1	2 - 40	41 - 50	51 - 100
CO2	2.5	0 - 1	2 - 40	41 - 50	51 - 100	0 - 1	2 - 40	41 - 50	51 - 100
CO3	2.4	0 - 1	2 - 40	41 - 50	51 - 100	0 - 1	2 - 40	41 - 50	51 - 100
CO4	2.4	0 - 1	2 - 40	41 - 50	51 - 100	0 - 1	2 - 40	41 - 50	51 - 100

---

## Formative (CIE) Assessments

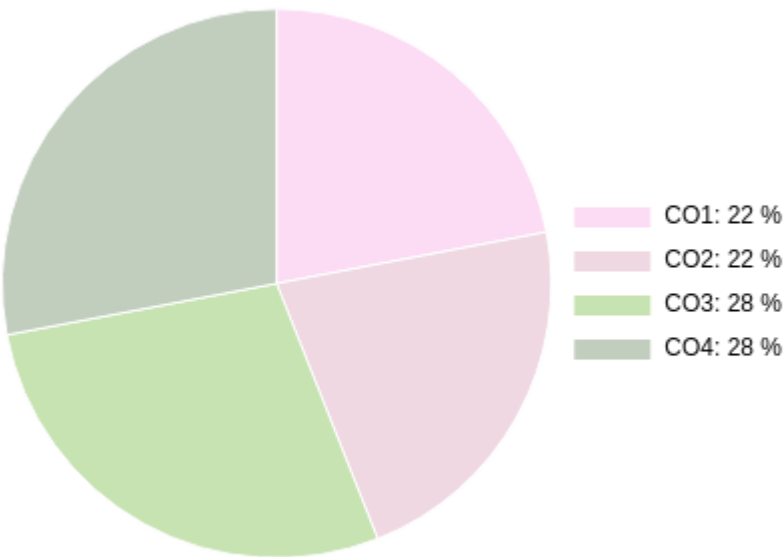
Sr No	Exam Name	Total Marks	Threshold in %	CO1	CO2	CO3	CO4	Avg Attainment
1	Unit 1/Class Test	12	50	3	3	3	3	3
2	Unit 3/Case Study-Open Book Test	6	50	3	3	3	3	3
3	Unit 2/Class Test	12	50	3	3	3	3	3
4	Unit 4/ISWP Seminar	10	50	3	3	3	3	3

---

## Summative (SEE) Assessments

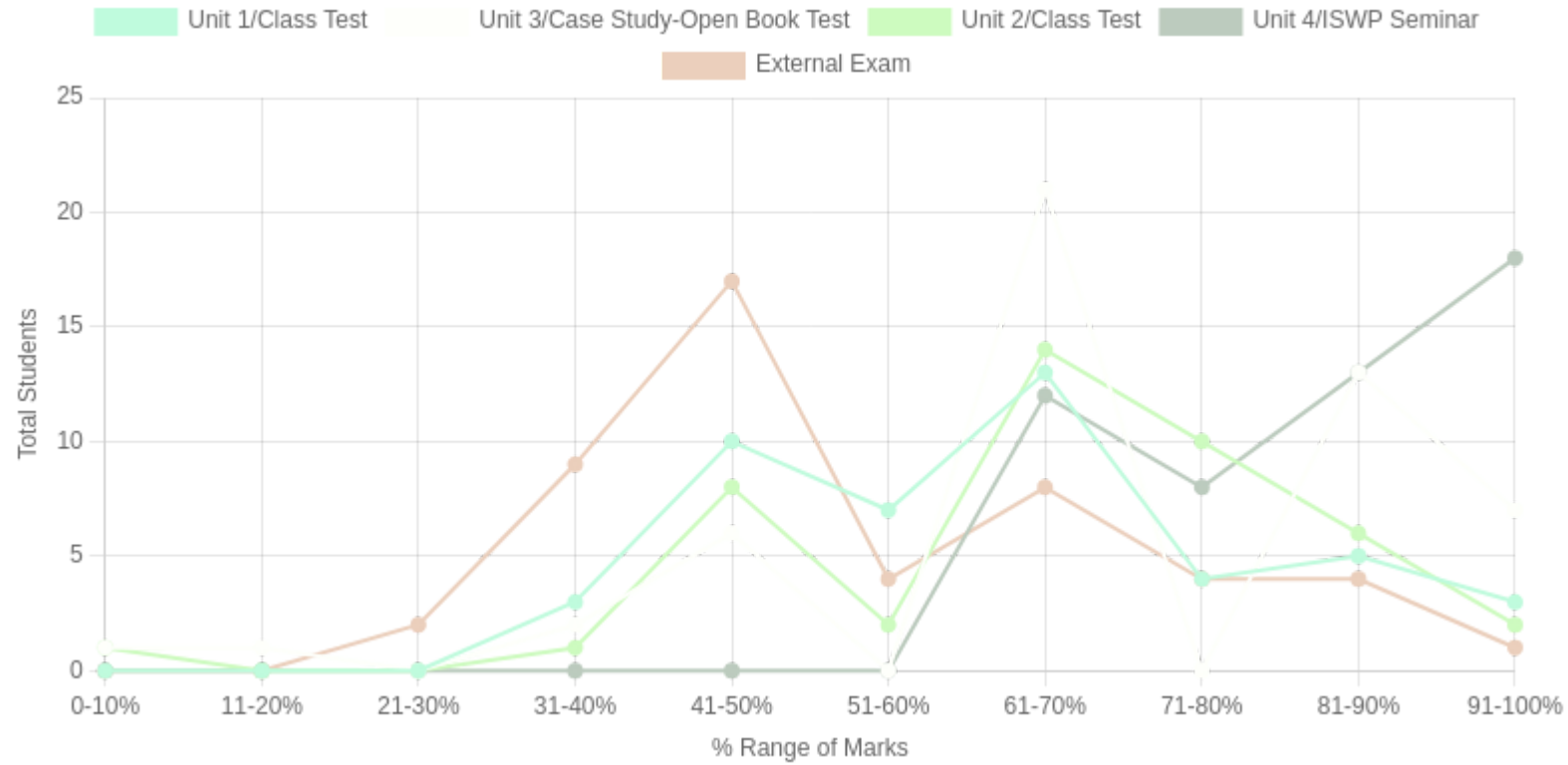
Sr No	Exam Name	Total Marks	Threshold in %	CO1	CO2	CO3	CO4	Avg Attainment
5	External Exam	60	50	1	1	2	1	1.25

# CO Coverage



COs	CO1	CO2	CO3	CO4
100	22	22	28	28
%	22	22	28	28

## Student % wise Distribution



Sr No	Assessment Title	Type	Total Marks	Avg Marks	Threshold in %	No of Students Scoring										Total Students Above Threshold
						0-10%	11-20%	21-30%	31-40%	41-50%	51-60%	61-70%	71-80%	81-90%	91-100%	
1	Unit 1/Class Test	F	12	7.64	50	0	0	0	3	10	7	13	4	5	3	42
2	Unit 3/Case Study-Open Book Test	F	6	4.19	50	1	1	0	2	6	0	21	0	13	7	47
3	Unit 2/Class Test	F	12	7.96	50	1	0	0	1	8	2	14	10	6	2	47
4	Unit 4/ISWP Seminar	F	10	8.72	50	0	0	0	0	0	0	12	8	13	18	51
5	External Exam	S	60	20.62	50	0	0	2	9	17	4	8	4	4	1	28



# Indirect Attainment

Feedback Details	CO wise analysis				
<b>Course Exit Survey-BSW-Sem5-2025-2026</b>  <b>Type:</b> Course Feedback <b>Publish Date:</b> 01/12/2025 <b>Last Date:</b> 04/12/2025 <b>Feedback conduction:</b> Backdated <b>Total Students:</b> 51 <b>Responses Received:</b> 43 <b>Consider for Attainment:</b> <input checked="" type="checkbox"/>	COS and Questions	CO1	CO2	CO3	CO4
		Q1	Q2	Q3	Q4
	Students Above Threshold	34/51	38/51	36/51	38/51
	Students Above Threshold in %	66.66%	74.5%	70.58%	74.5%
	Attainment After comparing with attainment Levels	3	3	3	3
	Average	3	3	3	3

---

## CO Attainment

CO	Direct Attainment	Indirect Attainment	Final Attainment	Target	Gap	Justification
CO1	2.6	3	2.68	2.5	0.18	-
CO2	2.6	3	2.68	2.5	0.18	-
CO3	2.8	3	2.84	2.4	0.43	-
CO4	2.6	3	2.68	2.4	0.28	-

Average CO Attainment : 2.72

# PO Direct Attainment

POs	PO1	PO2	PO3	PO4	PO5	PO6	PO7	PO8
Weighted Avg	2.5	2.33	3	2.5	2	3	2	2

Average CO Attainment : 2.72

POs	PO1	PO2	PO3	PO4	PO5	PO6	PO7	PO8
Calculation	2.5 (2.72) / 3	2.33 (2.72) / 3	3 (2.72) / 3	2.5 (2.72) / 3	2 (2.72) / 3	3 (2.72) / 3	2 (2.72) / 3	2 (2.72) / 3
Direct Attainment	2.27	2.11	2.72	2.27	1.81	2.72	1.81	1.81

---

## COURSE OVERVIEW | BSW

## COURSE OVERVIEW

BSW | Batch 2023-2026 | THIRD YEAR 2025-2026



Social Inclusion & Exclusion

( Minor 301 )

Course Overview

---

## Vision

To contribute to building a new social order based on human dignity and social justice.

## Mission

**M1:** To work with a preferential option for the vulnerable and exploited, both locally and globally.

**M2:** To build a cadre of young, competent professionals having a global perspective and a strong value base of compassion, personal integrity, moderation, tolerance and self-respect.

---

## Program Outcome (PO)

Sr. No	PO	Competency	PI Number	PI's
1	Graduates will critically analyze social realities, understand their changing dynamics, and actively engage in processes that contribute to positive social transformation.	-	1.1	-
2	They will demonstrate an in-depth understanding of diverse communities, their unique challenges, and systemic inequalities, and advocate for social justice in their professional practice.	-	2.1	-
3	Graduates will apply appropriate social work methods and strategies to effectively work with individuals, groups, and communities, addressing various social issues.	-	3.1	-
4	They will embody professional social work values and ethics, ensuring integrity, respect, and accountability in all aspects of their practice.	-	4.1	-
5	Graduates will develop problem-solving abilities and intervention strategies tailored to the needs of marginalized and vulnerable populations.	-	5.1	-
6	They will integrate research and evidence-based knowledge to design, implement, and evaluate social work interventions effectively.	-	6.1	-
7	Graduates will exhibit strong communication skills and the ability to collaborate with multidisciplinary teams to address social challenges holistically.	-	7.1	-
8	They will demonstrate a commitment to lifelong learning, staying informed about emerging trends and practices in the field of social work.	-	8.1	-

---

## Course Outcomes

**CO1:** Discuss the concepts of social inclusion and exclusion, along with the types and factors contributing to exclusion, in the context of dynamic social realities.

**CO2:** Analyze national and international inclusive policy frameworks and identify disparities and discrimination based on social constructs such as caste, class, religion, gender and race in India and abroad.

**CO3:** Apply professional values and ethics in addressing social exclusion, ensuring adherence to principles of social work practice in their engagements with diverse communities

**CO4:** Develop plan of interventions with strategies for creating access and opportunities to the excluded groups for their inclusive development.



---

## CO - PO - PSO Mapping

CO / PO / PSO	PO1	PO2	PO3	PO4	PO5	PO6	PO7	PO8	Average
CO1	3	2	-	-	-	2	-	1	2.00
CO2	3	2	-	-	-	3	-	2	2.50
CO3	-	-	-	3	2	-	3	2	2.50
CO4	2	-	2	-	3	2	-	-	2.25
Average	2.66	2	2	3	2.5	2.33	3	1.66	

---

## Program Outcome (PO) to PI Mapping

PO	Competency	Indicator	CO1	CO2	CO3	CO4	Average
PO1			-	-	-	-	-
Average			-	-	-	-	-

---

PO	Competency	Indicator	CO1	CO2	CO3	CO4	Average
PO2			-	-	-	-	-
Average			-	-	-	-	-

---

PO	Competency	Indicator	CO1	CO2	CO3	CO4	Average
PO3			-	-	-	-	-
Average			-	-	-	-	-

---

PO	Competency	Indicator	CO1	CO2	CO3	CO4	Average
PO4			-	-	-	-	-
Average			-	-	-	-	-

---

PO	Competency	Indicator	CO1	CO2	CO3	CO4	Average
PO5			-	-	-	-	-
Average			-	-	-	-	-

---

PO	Competency	Indicator	CO1	CO2	CO3	CO4	Average
PO6			-	-	-	-	-
Average			-	-	-	-	-

---

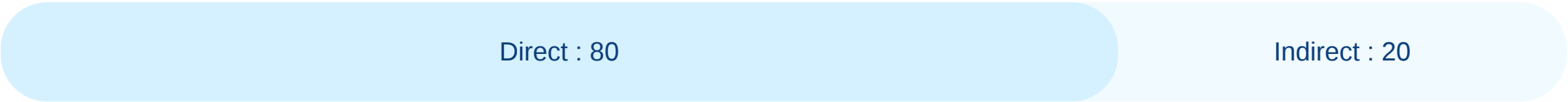
PO	Competency	Indicator	CO1	CO2	CO3	CO4	Average
PO7			-	-	-	-	-
Average			-	-	-	-	-



---

PO	Competency	Indicator	CO1	CO2	CO3	CO4	Average
PO8			-	-	-	-	-
Average			-	-	-	-	-

# CO Weightages Based on attainment type



## CO targets & Attainment Levels

COs	Target	Direct Attainment levels				Indirect Attainment levels			
		Level 0	Level 1	Level 2	Level 3	Level 0	Level 1	Level 2	Level 3
CO1	2	0 - 1	2 - 40	41 - 50	51 - 100	0 - 1	2 - 40	41 - 50	51 - 100
CO2	2.5	0 - 1	2 - 40	41 - 50	51 - 100	0 - 1	2 - 40	41 - 50	51 - 100
CO3	2.5	0 - 1	2 - 40	41 - 50	51 - 100	0 - 1	2 - 40	41 - 50	51 - 100
CO4	2.25	0 - 1	2 - 40	41 - 50	51 - 100	0 - 1	2 - 40	41 - 50	51 - 100

---

## Formative (CIE) Assessments

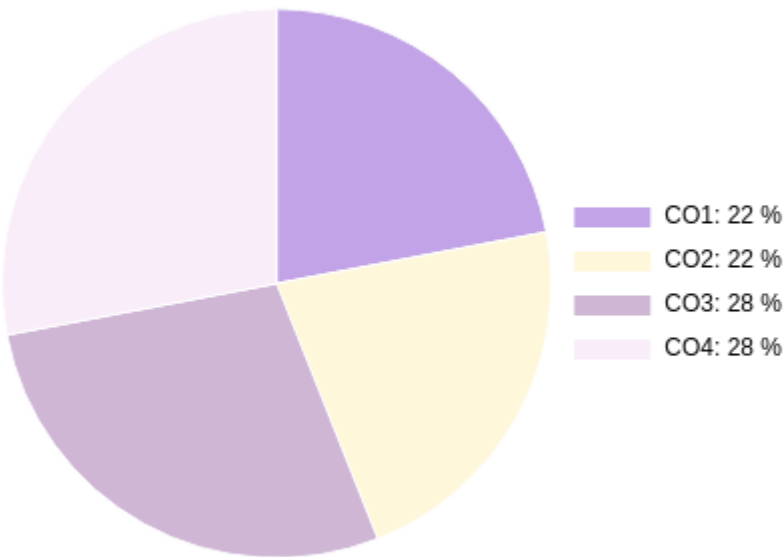
Sr No	Exam Name	Total Marks	Threshold in %	CO1	CO2	CO3	CO4	Avg Attainment
1	Unit 1/Presentation	10	50	3	3	3	3	3
2	Unit 2/Class Test	10	50	3	3	3	3	3
3	Unit 3/Reviewing Article	10	50	3	3	3	3	3
4	Unit 4/Assignment	10	50	3	3	3	3	3

---

## Summative (SEE) Assessments

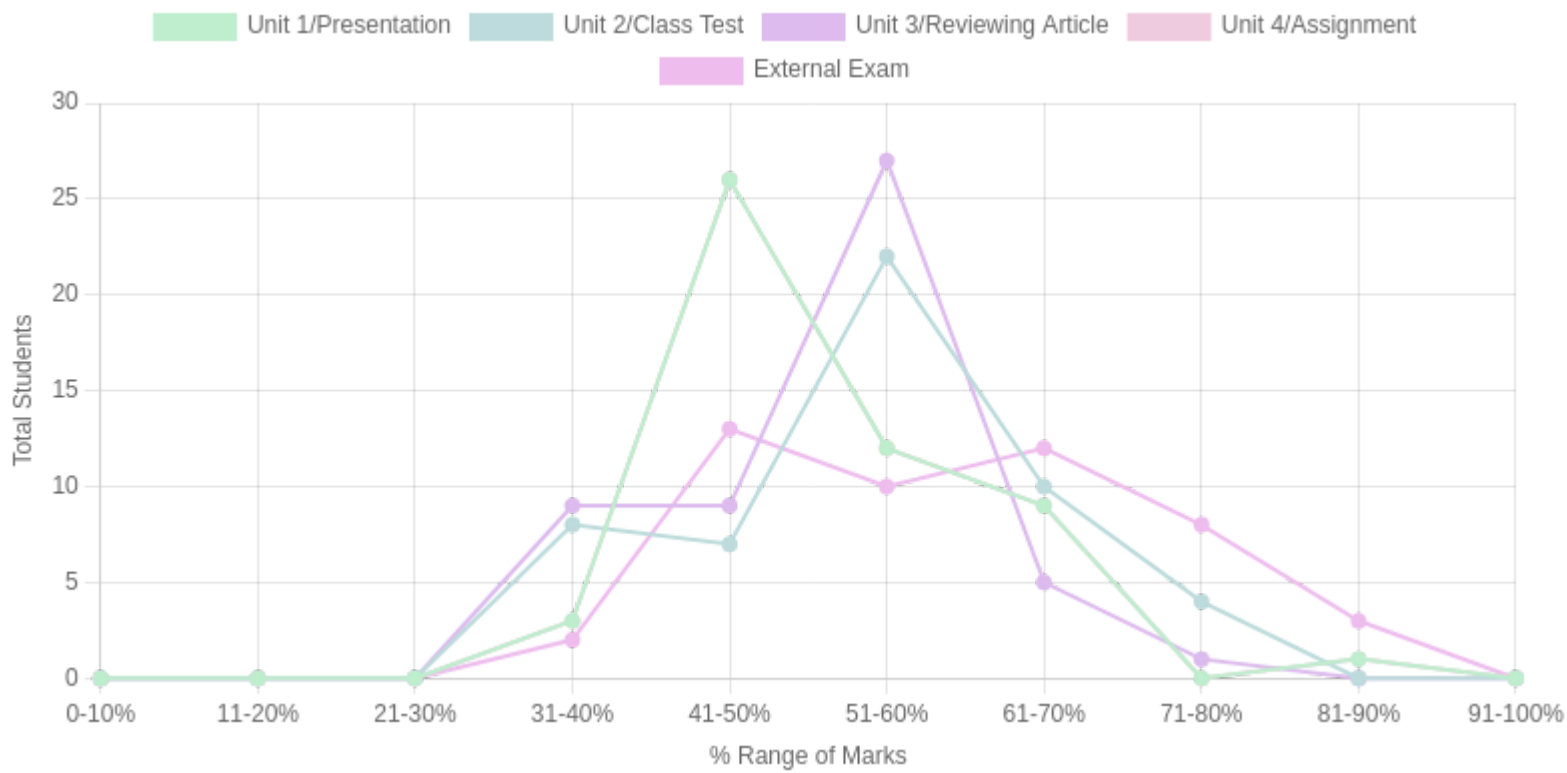
Sr No	Exam Name	Total Marks	Threshold in %	CO1	CO2	CO3	CO4	Avg Attainment
5	External Exam	60	50	3	3	2	1.5	2.37

# CO Coverage



COs	CO1	CO2	CO3	CO4
100	22	22	28	28
%	22	22	28	28

# Student % wise Distribution



Sr No	Assessment Title	Type	Total Marks	Avg Marks	Threshold in %	No of Students Scoring										Total Students Above Threshold
						0-10%	11-20%	21-30%	31-40%	41-50%	51-60%	61-70%	71-80%	81-90%	91-100%	
1	Unit 1/Presentation	F	10	5.6	50	0	0	0	3	26	12	9	0	1	0	48
2	Unit 2/Class Test	F	10	5.9	50	0	0	0	8	7	22	10	4	0	0	43
3	Unit 3/Reviewing Article	F	10	5.6	50	0	0	0	9	9	27	5	1	0	0	42
4	Unit 4/Assignment	F	10	5.6	50	0	0	0	3	26	12	9	0	1	0	48
5	External Exam	S	60	25.95	50	0	0	0	2	13	10	12	8	3	0	39

# Indirect Attainment

Feedback Details	CO wise analysis				
<b>Course Exit Survey-BSW-Sem5-2025-2026</b>  <b>Type:</b> Course Feedback <b>Publish Date:</b> 01/12/2025 <b>Last Date:</b> 04/12/2025 <b>Feedback conduction:</b> Backdated <b>Total Students:</b> 51 <b>Responses Received:</b> 43 <b>Consider for Attainment:</b> <input checked="" type="checkbox"/>	COS and Questions	CO1	CO2	CO3	CO4
		Q1	Q2	Q3	Q4
	Students Above Threshold	34/51	38/51	36/51	38/51
	Students Above Threshold in %	66.66%	74.5%	70.58%	74.5%
	Attainment After comparing with attainment Levels	3	3	3	3
	Average	3	3	3	3



---

## CO Attainment

CO	Direct Attainment	Indirect Attainment	Final Attainment	Target	Gap	Justification
CO1	3	3	3	2	1	-
CO2	3	3	3	2.5	0.5	-
CO3	2.8	3	2.84	2.5	0.33	-
CO4	2.7	3	2.76	2.25	0.5	-

Average CO Attainment : 2.9

# PO Direct Attainment

POs	PO1	PO2	PO3	PO4	PO5	PO6	PO7	PO8
Weighted Avg	2.66	2	2	3	2.5	2.33	3	1.66

Average CO Attainment : 2.9

POs	PO1	PO2	PO3	PO4	PO5	PO6	PO7	PO8
Calculation	2.66 (2.9) / 3	2 (2.9) / 3	2 (2.9) / 3	3 (2.9) / 3	2.5 (2.9) / 3	2.33 (2.9) / 3	3 (2.9) / 3	1.66 (2.9) / 3
Direct Attainment	2.57	1.93	1.93	2.90	2.42	2.25	2.90	1.60

---

## COURSE OVERVIEW | BSW

## COURSE OVERVIEW

BSW | Batch 2023-2026 | THIRD YEAR 2025-2026



Social Work Research II

( Major 301 )

Course Overview

---

## Vision

To contribute to building a new social order based on human dignity and social justice.

## Mission

**M1:** To work with a preferential option for the vulnerable and exploited, both locally and globally.

**M2:** To build a cadre of young, competent professionals having a global perspective and a strong value base of compassion, personal integrity, moderation, tolerance and self-respect.

---

## Program Outcome (PO)

Sr. No	PO	Competency	PI Number	PI's
1	Graduates will critically analyze social realities, understand their changing dynamics, and actively engage in processes that contribute to positive social transformation.	-	1.1	-
2	They will demonstrate an in-depth understanding of diverse communities, their unique challenges, and systemic inequalities, and advocate for social justice in their professional practice.	-	2.1	-
3	Graduates will apply appropriate social work methods and strategies to effectively work with individuals, groups, and communities, addressing various social issues.	-	3.1	-
4	They will embody professional social work values and ethics, ensuring integrity, respect, and accountability in all aspects of their practice.	-	4.1	-
5	Graduates will develop problem-solving abilities and intervention strategies tailored to the needs of marginalized and vulnerable populations.	-	5.1	-
6	They will integrate research and evidence-based knowledge to design, implement, and evaluate social work interventions effectively.	-	6.1	-
7	Graduates will exhibit strong communication skills and the ability to collaborate with multidisciplinary teams to address social challenges holistically.	-	7.1	-
8	They will demonstrate a commitment to lifelong learning, staying informed about emerging trends and practices in the field of social work.	-	8.1	-

---

## Course Outcomes

**CO1:** Comprehend the ethical data collection practices in social work research

**CO2:** Design and implement appropriate data collection tools

**CO3:** Collect data ensuring adherence to ethical standards in social work research.

**CO4:** Analyze data using relevant techniques and develop well-structured research reports based on findings.

---

## CO - PO - PSO Mapping

CO / PO / PSO	PO1	PO2	PO3	PO4	PO5	PO6	PO7	PO8	Average
CO1	-	-	-	3	-	3	2	2	2.50
CO2	-	-	3	-	2	3	-	2	2.50
CO3	-	-	-	3	2	2	3	-	2.50
CO4	2	-	-	-	-	3	2	3	2.50
Average	2	-	3	3	2	2.75	2.33	2.33	



---

## Program Outcome (PO) to PI Mapping

PO	Competency	Indicator	CO1	CO2	CO3	CO4	Average
PO1			-	-	-	-	-
Average			-	-	-	-	-

---

PO	Competency	Indicator	CO1	CO2	CO3	CO4	Average
PO2			-	-	-	-	-
Average			-	-	-	-	-

---

PO	Competency	Indicator	CO1	CO2	CO3	CO4	Average
PO3			-	-	-	-	-
Average			-	-	-	-	-

---

PO	Competency	Indicator	CO1	CO2	CO3	CO4	Average
PO4			-	-	-	-	-
Average			-	-	-	-	-

---

PO	Competency	Indicator	CO1	CO2	CO3	CO4	Average
PO5			-	-	-	-	-
Average			-	-	-	-	-

---

PO	Competency	Indicator	CO1	CO2	CO3	CO4	Average
PO6			-	-	-	-	-
Average			-	-	-	-	-

---

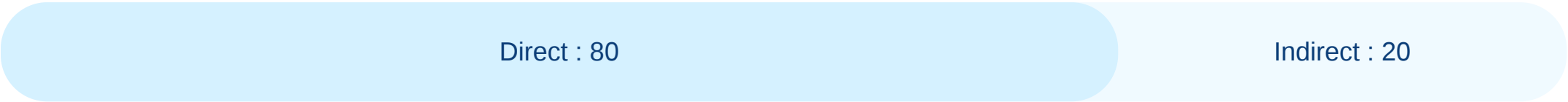
PO	Competency	Indicator	CO1	CO2	CO3	CO4	Average
PO7			-	-	-	-	-
Average			-	-	-	-	-

---

PO	Competency	Indicator	CO1	CO2	CO3	CO4	Average
PO8			-	-	-	-	-
Average			-	-	-	-	-



# CO Weightages Based on attainment type



## CO targets & Attainment Levels

COs	Target	Direct Attainment levels				Indirect Attainment levels			
		Level 0	Level 1	Level 2	Level 3	Level 0	Level 1	Level 2	Level 3
CO1	2.5	0 - 1	2 - 40	41 - 50	51 - 100	0 - 1	2 - 40	41 - 50	51 - 100
CO2	2.5	0 - 1	2 - 40	41 - 50	51 - 100	0 - 1	2 - 40	41 - 50	51 - 100
CO3	2.5	0 - 1	2 - 40	41 - 50	51 - 100	0 - 1	2 - 40	41 - 50	51 - 100
CO4	2.5	0 - 1	2 - 40	41 - 50	51 - 100	0 - 1	2 - 40	41 - 50	51 - 100

---

## Formative (CIE) Assessments

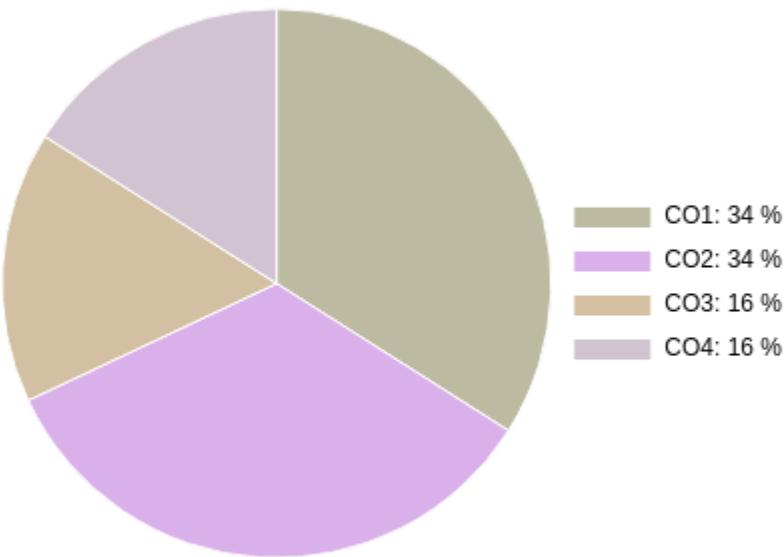
Sr No	Exam Name	Total Marks	Threshold in %	CO1	CO2	CO3	CO4	Avg Attainment
1	Unit 2/Class Test - Statistic	10	50	3	3	3	3	3
2	Unit 1/MCQ & Practical Lab	10	50	3	3	3	3	3

---

## Summative (SEE) Assessments

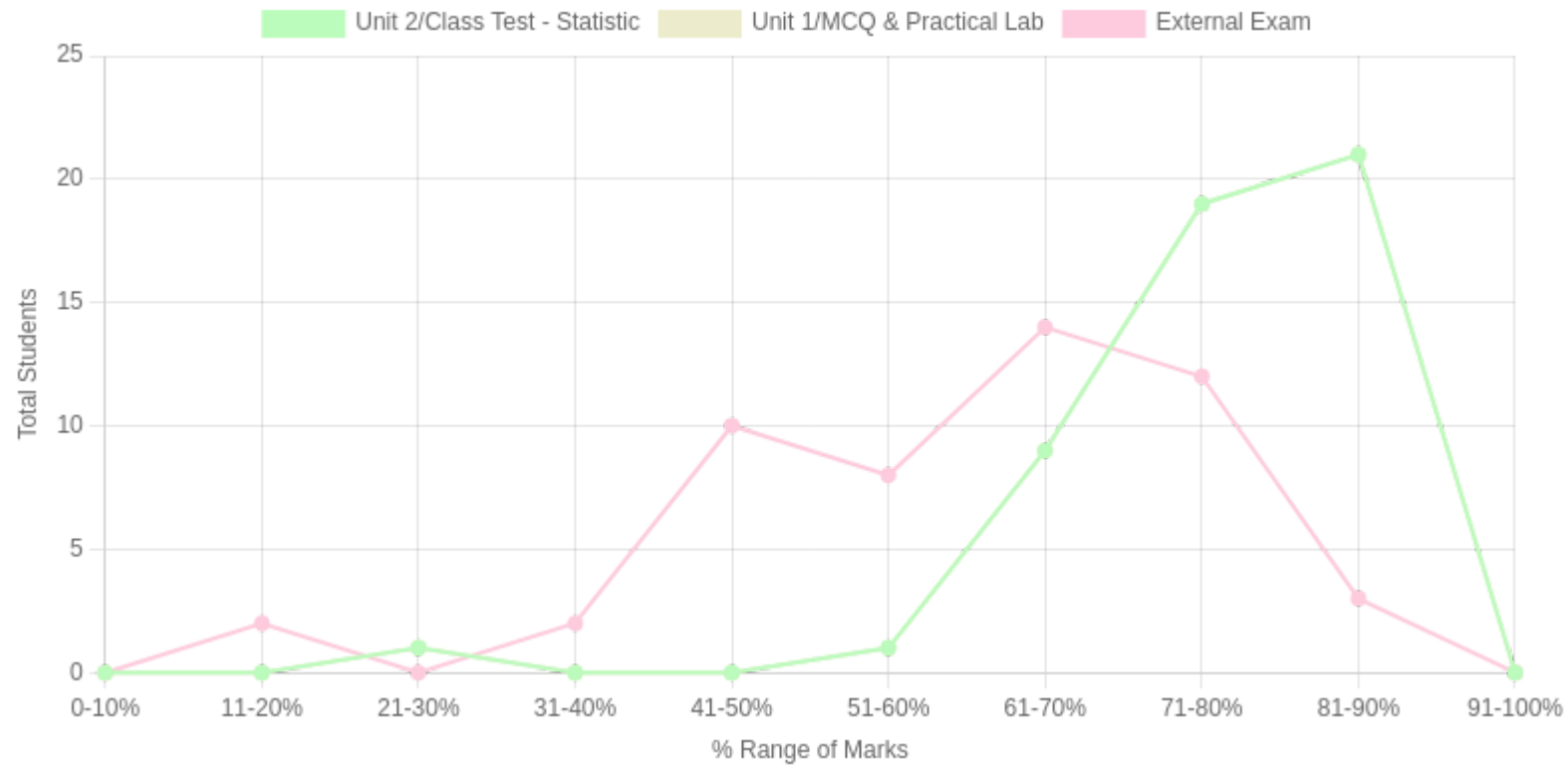
Sr No	Exam Name	Total Marks	Threshold in %	CO1	CO2	CO3	CO4	Avg Attainment
3	External Exam	30	50	1	3	2	2	2

# CO Coverage



COs	CO1	CO2	CO3	CO4
50	17	17	8	8
%	34	34	16	16

## Student % wise Distribution



Sr No	Assessment Title	Type	Total Marks	Avg Marks	Threshold in %	No of Students Scoring										Total Students Above Threshold
						0-10%	11-20%	21-30%	31-40%	41-50%	51-60%	61-70%	71-80%	81-90%	91-100%	
1	Unit 2/Class Test - Statistic	F	10	8.09	50	0	0	1	0	0	1	9	19	21	0	50
2	Unit 1/MCQ & Practical Lab	F	10	8.09	50	0	0	1	0	0	1	9	19	21	0	50
3	External Exam	S	30	11.78	50	0	2	0	2	10	8	14	12	3	0	42

# Indirect Attainment

Feedback Details	CO wise analysis				
<b>Course Exit Survey-BSW-Sem5-2025-2026</b>  <b>Type:</b> Course Feedback <b>Publish Date:</b> 01/12/2025 <b>Last Date:</b> 04/12/2025 <b>Feedback conduction:</b> Backdated <b>Total Students:</b> 51 <b>Responses Received:</b> 43 <b>Consider for Attainment:</b> <input checked="" type="checkbox"/>	COS and Questions	CO1	CO2	CO3	CO4
		Q1	Q2	Q3	Q4
	Students Above Threshold	34/51	38/51	36/51	38/51
	Students Above Threshold in %	66.66%	74.5%	70.58%	74.5%
	Attainment After comparing with attainment Levels	3	3	3	3
	Average	3	3	3	3

---

## CO Attainment

CO	Direct Attainment	Indirect Attainment	Final Attainment	Target	Gap	Justification
CO1	2.33	3	2.46	2.5	-0.04	-
CO2	3	3	3	2.5	0.5	-
CO3	2.66	3	2.72	2.5	0.22	-
CO4	2.66	3	2.72	2.5	0.22	-

Average CO Attainment : 2.72



## PO Direct Attainment

POs	PO1	PO2	PO3	PO4	PO5	PO6	PO7	PO8
Weighted Avg	2	-	3	3	2	2.75	2.33	2.33

Average CO Attainment : 2.72

POs	PO1	PO2	PO3	PO4	PO5	PO6	PO7	PO8
Calculation	2 (2.72) / 3	0 (2.72) / 3	3 (2.72) / 3	3 (2.72) / 3	2 (2.72) / 3	2.75 (2.72) / 3	2.33 (2.72) / 3	2.33 (2.72) / 3
Direct Attainment	1.81	0.00	2.72	2.72	1.81	2.49	2.11	2.11

---

## COURSE OVERVIEW | BSW

## COURSE OVERVIEW

BSW | Batch 2023-2026 | THIRD YEAR 2025-2026



Women Studies

( ME 301 )

Course Overview

---

## Vision

To contribute to building a new social order based on human dignity and social justice.

## Mission

**M1:** To work with a preferential option for the vulnerable and exploited, both locally and globally.

**M2:** To build a cadre of young, competent professionals having a global perspective and a strong value base of compassion, personal integrity, moderation, tolerance and self-respect.

---

## Program Outcome (PO)

Sr. No	PO	Competency	PI Number	PI's
1	Graduates will critically analyze social realities, understand their changing dynamics, and actively engage in processes that contribute to positive social transformation.	-	1.1	-
2	They will demonstrate an in-depth understanding of diverse communities, their unique challenges, and systemic inequalities, and advocate for social justice in their professional practice.	-	2.1	-
3	Graduates will apply appropriate social work methods and strategies to effectively work with individuals, groups, and communities, addressing various social issues.	-	3.1	-
4	They will embody professional social work values and ethics, ensuring integrity, respect, and accountability in all aspects of their practice.	-	4.1	-
5	Graduates will develop problem-solving abilities and intervention strategies tailored to the needs of marginalized and vulnerable populations.	-	5.1	-
6	They will integrate research and evidence-based knowledge to design, implement, and evaluate social work interventions effectively.	-	6.1	-
7	Graduates will exhibit strong communication skills and the ability to collaborate with multidisciplinary teams to address social challenges holistically.	-	7.1	-
8	They will demonstrate a commitment to lifelong learning, staying informed about emerging trends and practices in the field of social work.	-	8.1	-

---

## Course Outcomes

**CO1:** Discuss the status of women, women's movement, literature on women's subordination (past to present)

**CO2:** Explain theoretical perspectives on important phenomenon in the subject.

**CO3:** Critically analyse oppression based on gender (intersectionality), gender-based violence, and approaches for gender equity/ empowerment.

**CO4:** Evaluate the legislations, and initiatives by civil society for gender equity

---

## CO - PO - PSO Mapping

CO / PO / PSO	PO1	PO2	PO3	PO4	PO5	PO6	PO7	PO8	Average
CO1	3	2	-	-	-	2	-	1	2.00
CO2	2	3	-	-	-	2	-	1	2.00
CO3	3	2	-	2	-	3	-	-	2.50
CO4	-	-	-	3	3	2	2	-	2.50
Average	2.66	2.33	-	2.5	3	2.25	2	1	

---

## Program Outcome (PO) to PI Mapping

PO	Competency	Indicator	CO1	CO2	CO3	CO4	Average
PO1			-	-	-	-	-
Average			-	-	-	-	-



---

PO	Competency	Indicator	CO1	CO2	CO3	CO4	Average
PO2			-	-	-	-	-
Average			-	-	-	-	-

---

PO	Competency	Indicator	CO1	CO2	CO3	CO4	Average
PO3			-	-	-	-	-
Average			-	-	-	-	-

---

PO	Competency	Indicator	CO1	CO2	CO3	CO4	Average
PO4			-	-	-	-	-
Average			-	-	-	-	-

---

PO	Competency	Indicator	CO1	CO2	CO3	CO4	Average
PO5			-	-	-	-	-
Average			-	-	-	-	-

---

PO	Competency	Indicator	CO1	CO2	CO3	CO4	Average
PO6			-	-	-	-	-
Average			-	-	-	-	-

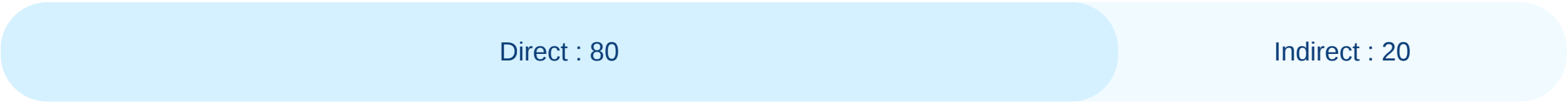
---

PO	Competency	Indicator	CO1	CO2	CO3	CO4	Average
PO7			-	-	-	-	-
Average			-	-	-	-	-

---

PO	Competency	Indicator	CO1	CO2	CO3	CO4	Average
PO8			-	-	-	-	-
Average			-	-	-	-	-

# CO Weightages Based on attainment type



## CO targets & Attainment Levels

COs	Target	Direct Attainment levels				Indirect Attainment levels			
		Level 0	Level 1	Level 2	Level 3	Level 0	Level 1	Level 2	Level 3
CO1	2	0 - 1	2 - 40	41 - 50	51 - 100	0 - 1	2 - 40	41 - 50	51 - 100
CO2	2	0 - 1	2 - 40	41 - 50	51 - 100	0 - 1	2 - 40	41 - 50	51 - 100
CO3	2.5	0 - 1	2 - 40	41 - 50	51 - 100	0 - 1	2 - 40	41 - 50	51 - 100
CO4	2.5	0 - 1	2 - 40	41 - 50	51 - 100	0 - 1	2 - 40	41 - 50	51 - 100



---

## Formative (CIE) Assessments

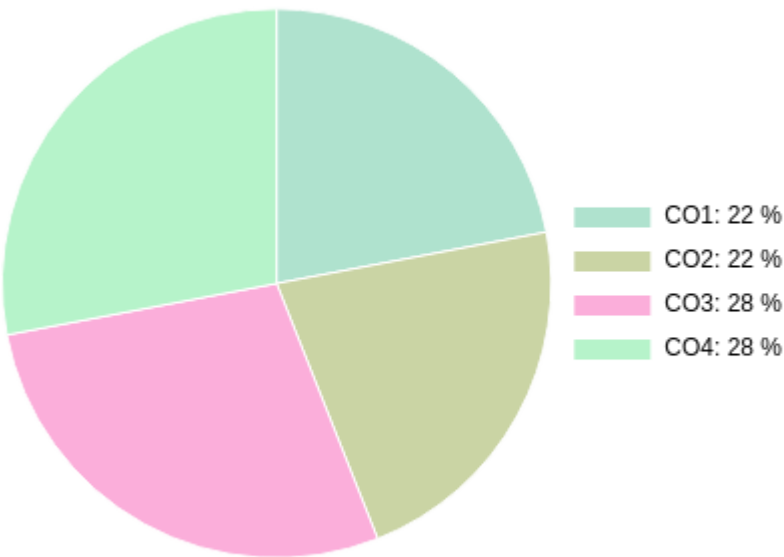
Sr No	Exam Name	Total Marks	Threshold in %	CO1	CO2	CO3	CO4	Avg Attainment
1	Unit 3	10	50	3	3	3	3	3
2	Unit 4	10	50	3	3	3	3	3
3	Unit 1/Group Worksheet	10	50	3	3	3	3	3
4	Unit 2	10	50	3	3	3	3	3

---

## Summative (SEE) Assessments

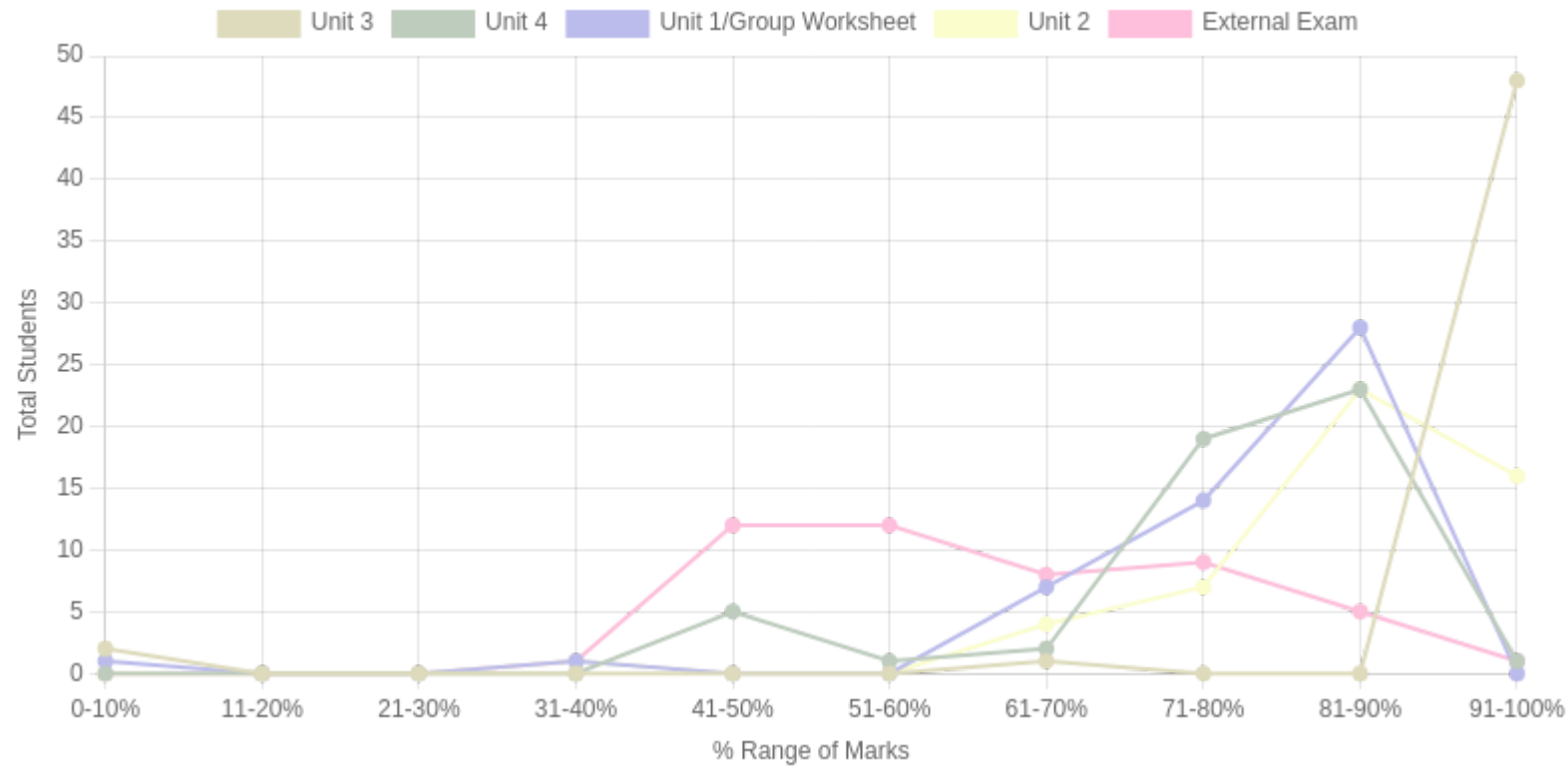
Sr No	Exam Name	Total Marks	Threshold in %	CO1	CO2	CO3	CO4	Avg Attainment
5	External Exam	60	50	3	3	2	2.5	2.62

# CO Coverage



COs	CO1	CO2	CO3	CO4
100	22	22	28	28
%	22	22	28	28

## Student % wise Distribution



Sr No	Assessment Title	Type	Total Marks	Avg Marks	Threshold in %	No of Students Scoring										Total Students Above Threshold
						0-10%	11-20%	21-30%	31-40%	41-50%	51-60%	61-70%	71-80%	81-90%	91-100%	
1	Unit 3	F	10	9.53	50	2	0	0	0	0	0	1	0	0	48	49
2	Unit 4	F	10	8	50	0	0	0	0	5	1	2	19	23	1	51
3	Unit 1/Group Worksheet	F	10	8.04	50	1	0	0	1	0	0	7	14	28	0	49
4	Unit 2	F	10	8.92	50	0	0	0	1	0	0	4	7	23	16	50
5	External Exam	S	60	24.88	50	0	0	0	1	12	12	8	9	5	1	41

# Indirect Attainment

Feedback Details	CO wise analysis				
<b>Course Exit Survey-BSW-Sem5-2025-2026</b>  <b>Type:</b> Course Feedback <b>Publish Date:</b> 01/12/2025 <b>Last Date:</b> 04/12/2025 <b>Feedback conduction:</b> Backdated <b>Total Students:</b> 51 <b>Responses Received:</b> 43 <b>Consider for Attainment:</b> <input checked="" type="checkbox"/>	COS and Questions	CO1	CO2	CO3	CO4
		Q1	Q2	Q3	Q4
	Students Above Threshold	34/51	38/51	36/51	38/51
	Students Above Threshold in %	66.66%	74.5%	70.58%	74.5%
	Attainment After comparing with attainment Levels	3	3	3	3
	Average	3	3	3	3

---

## CO Attainment

CO	Direct Attainment	Indirect Attainment	Final Attainment	Target	Gap	Justification
CO1	3	3	3	2	1	-
CO2	3	3	3	2	1	-
CO3	2.8	3	2.84	2.5	0.33	-
CO4	2.9	3	2.92	2.5	0.41	-

Average CO Attainment : 2.94

# PO Direct Attainment

POs	PO1	PO2	PO3	PO4	PO5	PO6	PO7	PO8
Weighted Avg	2.66	2.33	-	2.5	3	2.25	2	1

Average CO Attainment : 2.94

POs	PO1	PO2	PO3	PO4	PO5	PO6	PO7	PO8
Calculation	2.66 (2.94) / 3	2.33 (2.94) / 3	0 (2.94) / 3	2.5 (2.94) / 3	3 (2.94) / 3	2.25 (2.94) / 3	2 (2.94) / 3	1 (2.94) / 3
Direct Attainment	2.61	2.28	0.00	2.45	2.94	2.21	1.96	0.98



---

## COURSE OVERVIEW | BSW

## Course Exit Survey – Dashboard Summary

**Program:** BSW

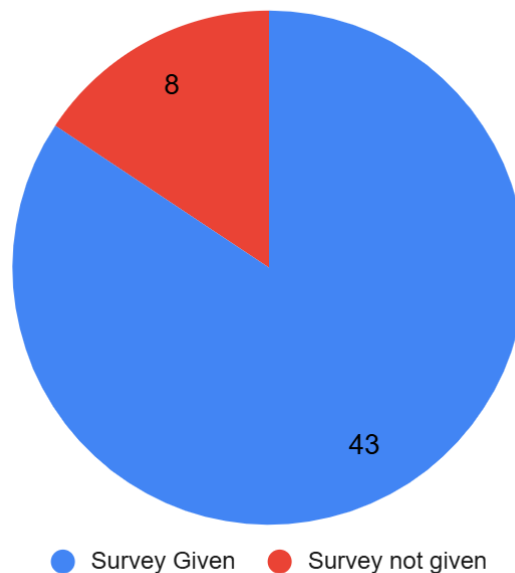
**Semester and Year:** Sem 3 AY 2025-2026

**Course Code:** Major 302Timestampstamp

**Course Name:** Integrated Social Work Practice

### Response Analysis

Total Students: 51



A total of **43 students** responded. Overall feedback indicates **very strong theoretical understanding**, high application capability of integrated practice models, and **excellent reflective and analytical skills** developed through case studies and seminar work.

### Questions

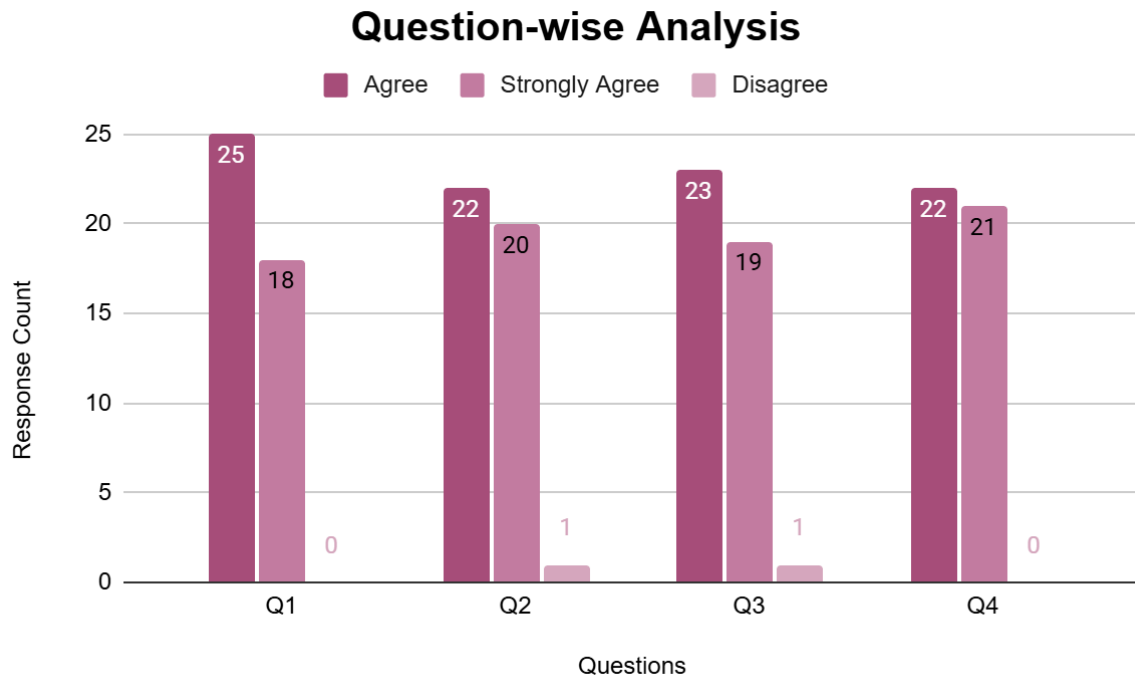
Q1: I was able to recall and explain key social science theories and describe their relevance to social work practice at micro and macro levels

Q2: I was able to apply integrated social work practice models, including Person-in-Environment (PIE), strengths-based, and crisis intervention frameworks, to develop culturally responsive interventions for individuals, families, and communities.

Q3: I was able to analyze case studies and fieldwork experiences to evaluate the effectiveness of Integrative Short-Term Treatment (ISTT) and Integrated Social Work Practice (ISWP) in addressing client needs and systemic challenges.

Q4: I was able to Develop a reflective seminar paper by identifying core field problems, integrating relevant social work theories, and designing appropriate interventions, adhering to professional standards of practice.

<b>Outcome Code</b>	<b>Learning Outcome Focus</b>	<b>Strongly Agree (%)</b>	<b>Agree (%)</b>	<b>Disagree (%)</b>	<b>Positive (%)</b>
<b>Q1</b>	Social science theories & relevance to practice	<b>41.9%</b>	<b>58.1%</b>	<b>0%</b>	<b>100%</b>
<b>Q2</b>	Application of integrated practice models	<b>46.5%</b>	<b>51.2%</b>	<b>2.3%</b>	<b>97.7%</b>
<b>Q3</b>	Analysis of ISTT & ISWP using cases/fieldwork	<b>44.2%</b>	<b>53.5%</b>	<b>2.3%</b>	<b>97.7%</b>
<b>Q4</b>	Reflective seminar paper & intervention design	<b>48.8%</b>	<b>51.2%</b>	<b>0%</b>	<b>100%</b>



#### ◆ Q1 — Understanding Social Science Theories & Their Relevance to Practice

**Positive Responses (SA + A): 100%**

- Students demonstrated excellent recall and understanding of key social science theories.
- Strong ability to link theory with **micro and macro social work practice**.

---

#### ◆ Q2 — Applying Integrated Social Work Practice Models

**Positive Responses: 97.7%**

- Students effectively applied PIE, strengths-based, and crisis intervention frameworks.
  - **Only 1 student (2.3%) disagreed**, indicating very strong applied learning with minimal gaps.
-

### ◆ Q3 — Analysing Case Studies & Fieldwork Experiences

**Positive Responses: 97.7%**

- Students showed strong analytical skills in evaluating ISTT and ISWP for client and systemic challenges.
  - Reflects effective integration of theory, fieldwork, and critical analysis.
- 

### ◆ Q4 — Developing Reflective Seminar Paper & Intervention Design

**Positive Responses: 100%**

- Students confidently developed reflective seminar papers integrating theory, field problems, and interventions.
- Indicates excellent achievement of higher-order learning outcomes and professional standards.

### 📌 Key Insights (Executive Summary)

- ✓ **Perfect outcome attainment** in theoretical understanding and reflective practice (Q1 & Q4).
- ✓ **Very strong application and analytical skills** in integrated practice models and case analysis (Q2 & Q3).
- ✓ High proportion of **Strongly Agree responses** across all outcomes indicates deep learning and student confidence.
- ✓ No major learning gaps identified.

### 📌 Overall Dashboard Conclusion

The course demonstrates **exceptional effectiveness**, with **97.7%–100% positive responses** across all learning outcomes. Students show strong readiness to integrate theory with practice, critically analyse real-world challenges, and design professional, ethical interventions in social work practice.

## Course Exit Survey – Dashboard Summary

**Program:** BSW

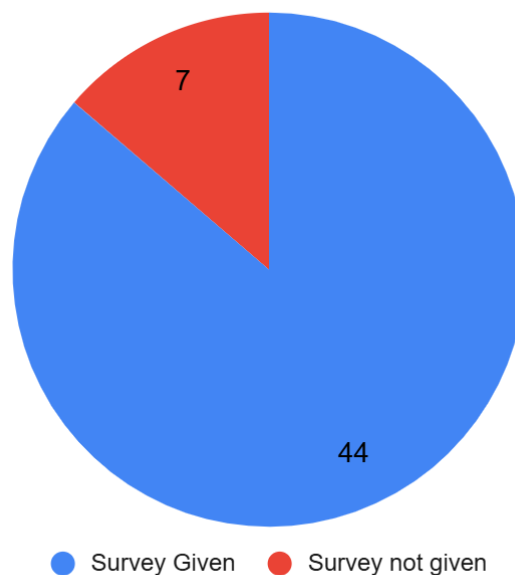
**Semester and Year:** Sem 3 AY 2025-2026

**Course Code:** Major 301Timestampstamp

**Course Name:** Social Work Research- II

### Response Analysis

Total Students: 51



A total of **44 students** responded. The feedback reflects **very strong ethical understanding**, high competence in tool design, and **good development of data analysis skills**, with minor scope to strengthen applied ethics and advanced statistical confidence.

### Questions

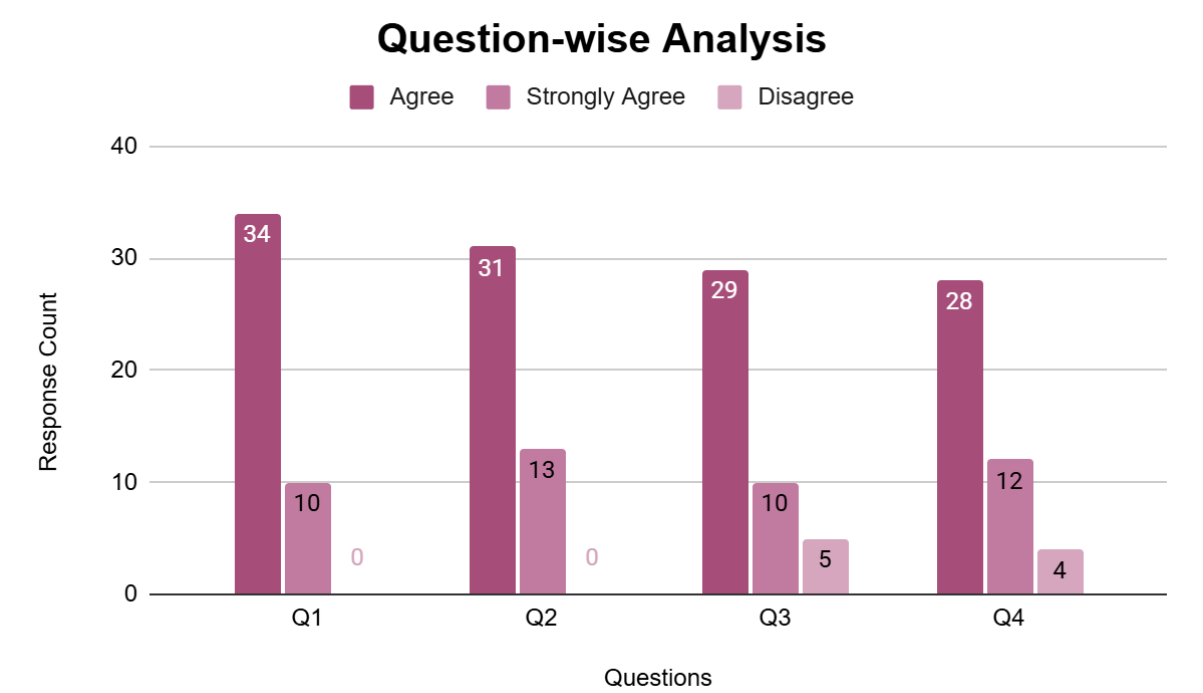
Q1: I was able to Comprehend the ethical data collection practices in social work research.

Q2: I was able to Design and implement appropriate data collection tools.

Q3: I was able to Collect data ensuring adherence to ethical standards in social work research.

Q4: I developed practical skills in data analysis, including graphical representation, measures of central tendency, dispersion, and inferential statistics.

Outcome Code	Learning Outcome Focus	Strongly Agree (%)	Agree (%)	Disagree (%)	Positive (%)
Q1	Ethical data collection practices	22.7%	77.3%	0%	100%
Q2	Design & implementation of data tools	29.5%	70.5%	0%	100%
Q3	Ethical data collection in practice	22.7%	65.9%	11.4%	88.6%
Q4	Data analysis & statistical skills	27.3%	63.6%	9.1%	90.9%



#### ◆ Q1 — Ethical Data Collection Practices in Social Work Research

**Positive Responses (SA + A): 100%**

- All students demonstrated clear comprehension of ethical data collection practices.
  - Indicates excellent grounding in research ethics.
- 

#### ◆ Q2 — Designing & Implementing Data Collection Tools

**Positive Responses: 100%**

- Students showed strong capability in designing and implementing appropriate tools.
  - Reflects effective practical and methodological training.
- 

#### ◆ Q3 — Collecting Data with Ethical Adherence

**Positive Responses: 88.6%**

- Majority of students were able to apply ethical standards during actual data collection.
  - **11.4% disagreement** suggests the need for more supervised or field-based ethical practice.
- 

#### ◆ Q4 — Practical Skills in Data Analysis & Statistics

**Positive Responses: 90.9%**

- Students developed good skills in graphical representation and statistical techniques.
- **9.1% disagreement** indicates some learners may need additional support in inferential statistics.



### **Key Insights (Executive Summary)**

- ✓ **Perfect attainment in ethics and tool design** (Q1 & Q2), showing excellent foundational and practical learning.
- ✓ Students largely succeed in **applying ethics in real data collection**, though a small group needs more guided exposure (Q3).
- ✓ **Data analysis skills are strong**, but confidence in advanced statistical concepts varies (Q4).
- ✓ Overall outcome attainment ranges from **88.6% to 100%**, indicating high course effectiveness.

### **Overall Dashboard Conclusion**

The course demonstrates **high effectiveness** in building ethical research practices and methodological competence. With **near-universal positive responses**, students are well-prepared for ethical data collection and foundational statistical analysis, with targeted support recommended for applied ethics and advanced statistics.