



NIRF ranking in the band of 101 to 150 in the year 2025

NAAC Re-Accredited "A" Grade (3rd Cycle)
with CGPA 3.53 on a Scale of 4 in 2015; and
awarded Autonomy Status by UGC in 2019



College of Social Work (Empowered Autonomous) Nirmala Niketan

**ACADEMIC YEAR
2025- 2026**

OUTCOME BASED EDUCATION REPORT BSW II



Contemporary Development Studies

BSW

SEM - 3

1. Course Overview

The course **Contemporary Development Studies (Minor 201)** is offered to **second-year BSW students** to help them understand modern development approaches, key development issues, and policy frameworks. The course supports the institution's vision of **human dignity, social justice, and inclusive development**.

The **Course Outcomes (COs)** focus on analyzing development theories, applying human development measurement tools, understanding contemporary development challenges, and evaluating public policies. The **CO–PO mapping** shows good alignment with program outcomes related to **social analysis, policy understanding, research application, and professional competence**.

The overall **average CO attainment of 2.9** indicates strong achievement of learning outcomes through **direct (80%) and indirect (20%) assessment methods**.

2. Purpose of the Course Overview Report

The purpose of this course overview report is to:

- Review the effectiveness of teaching and assessment methods
- Measure attainment of course outcomes
- Ensure alignment between course outcomes and program outcomes
- Identify strengths and improvement areas
- Support academic quality and continuous improvement

3. Gap Analysis

The gap analysis compares **target attainment levels** with **actual student attainment**.

Key Observations:

- **All COs (CO1–CO4)** have achieved attainment levels above their targets, indicating strong conceptual understanding and analytical ability.
- Students performed well in formative assessments such as case analysis, presentations, and tests.
- Minor variations are observed in external examination performance, which is expected due to the analytical nature of the subject.

Overall Gap Status:

No major gaps are identified. The course outcomes are achieved satisfactorily.

4. Areas for Improvement / Action Plan

To further enhance learning outcomes, the following steps are suggested:

- Include more real-world policy case studies
- Encourage critical classroom discussions on current development issues
- Strengthen linkage between theory and field realities
- Promote independent reading and policy analysis assignments

These actions will further strengthen analytical and policy evaluation skills.

5. Summary and Conclusion

The **Contemporary Development Studies** course is well-designed and effectively delivered. All course outcomes have been achieved beyond the target levels, reflecting effective teaching and assessment practices.

Overall, the course significantly contributes to developing **analytical thinking, policy understanding, and social development perspectives** among social work students.

Field Work III

BSW

SEM - 3

1. Course Overview

The course **Field Work III (Major 202)** is designed for **second-year BSW students** to provide intensive field-based learning and professional exposure. The course enables students to link **theory with practice** while working with organizations and communities, in alignment with the institution's vision of **human dignity and social justice**.

The **Course Outcomes (COs)** focus on understanding organizational settings, developing problem-solving and communication skills, demonstrating professional responsibility, and creating IEC materials for community engagement. The **CO–PO mapping** shows strong alignment with program outcomes related to **professional ethics, applied social work methods, communication skills, and social intervention strategies**.

The overall **average CO attainment of 3.0** indicates excellent achievement of learning outcomes through **direct (80%) and indirect (20%) assessment methods**.

2. Purpose of the Course Overview Report

The purpose of this course overview report is to:

- Evaluate the effectiveness of field-based learning and supervision
- Measure attainment of practical and professional competencies
- Ensure alignment between course outcomes and program outcomes
- Identify strengths and improvement areas in field practice
- Support quality assurance and continuous improvement

3. Gap Analysis

The gap analysis compares **target attainment levels** with **actual student attainment**.

Key Observations:

- **All COs (CO1–CO4)** have achieved attainment levels above their targets, indicating strong field engagement and professional skill development.
- Students demonstrated effective application of theory, ethical practice, communication, and intervention skills in field settings.

Overall Gap Status:

No significant gaps are identified. The course outcomes are fully achieved.

4. Areas for Improvement / Action Plan

To further enhance field learning experiences, the following actions are suggested:

- Provide exposure to diverse field settings and client groups
- Strengthen reflective supervision and documentation practices
- Encourage advanced use of participatory tools and media
- Promote interdisciplinary collaboration during fieldwork

These measures will further strengthen professional competence and field readiness.

5. Summary and Conclusion

The **Field Work III** course is effectively designed and successfully implemented, with all course outcomes achieved at or above the target levels. The course plays a critical role in developing **professional skills, ethical responsibility, and practical competence** among social work students.

Overall, the course significantly contributes to preparing students for **advanced field practice and professional social work roles**.

Hindi

BSW

SEM - 3

1. Course Overview

The course **Hindi (AEC 201)** is offered to **second-year BSW students** to strengthen their Hindi language skills for effective communication in academic, professional, and social work contexts. The course supports the institution's vision of **human dignity, social justice, and inclusive communication**.

The **Course Outcomes (COs)** focus on basic grammar, professional communication, reading comprehension, cultural understanding through literature, and self-evaluation of language proficiency. The **CO–PO mapping** shows alignment with program outcomes related to **communication skills, ethical engagement, and lifelong learning**.

The overall **average CO attainment of 3.0** indicates excellent achievement of learning outcomes through **direct (80%) and indirect (20%) assessment methods**.

2. Purpose of the Course Overview Report

The purpose of this course overview report is to:

- Evaluate the effectiveness of language teaching and assessment methods
- Measure attainment of Hindi language course outcomes
- Ensure alignment between course outcomes and program outcomes
- Identify strengths and areas for enhancement
- Support academic quality assurance and continuous improvement

3. Gap Analysis

The gap analysis compares **target attainment levels** with **actual student attainment**.

Key Observations:

- **All COs (CO1–CO5)** have achieved attainment levels above the target, indicating strong performance in grammar, comprehension, and communication skills.
- Students demonstrated good confidence in reading, writing, and understanding Hindi texts relevant to social and cultural contexts.

Overall Gap Status:

No significant gaps are identified. Course outcomes are fully achieved.

4. Areas for Improvement / Action Plan

To further enhance learning outcomes, the following steps are suggested:

- Encourage more spoken Hindi activities and group discussions
- Include role plays and field-based communication exercises
- Promote reading of contemporary Hindi articles related to social issues
- Strengthen reflective self-assessment of language skills

These actions will further improve communication effectiveness in professional settings.

5. Summary and Conclusion

The **Hindi (AEC 201)** course is well-structured and effectively delivered, with all course outcomes achieved beyond the target levels. The course contributes significantly to enhancing **language proficiency, cultural awareness, and professional communication skills** among social work students.

Overall, the course supports holistic student development and effective engagement with diverse communities.

Introduction to Economics

BSW

SEM - 3

1. Course Overview

The course **Introduction to Economics (OE 201)** is offered to **second-year BSW students** to provide basic understanding of economic concepts relevant to social work practice. The course supports the institution's vision of **social justice and inclusive development** by helping students understand economic systems and policies affecting society.

The **Course Outcomes (COs)** focus on fundamental economic concepts, factors of production, income theories, economic policies in India, and application of demand–supply laws. The **CO–PO mapping** shows alignment with program outcomes related to **social analysis, problem-solving, policy understanding, and informed decision-making**.

The overall **average CO attainment of 2.89** indicates good achievement of learning outcomes through **direct (80%) and indirect (20%) assessment methods**.

2. Purpose of the Course Overview Report

The purpose of this course overview report is to:

- Assess the effectiveness of economics teaching and assessments
- Measure attainment of course outcomes
- Ensure alignment between course outcomes and program outcomes
- Identify strengths and improvement areas
- Support academic quality assurance and continuous improvement

3. Gap Analysis

The gap analysis compares **target attainment levels** with **actual student attainment**.

Key Observations:

- **CO1, CO3, CO4, and CO5** have achieved attainment levels above their targets, showing strong understanding of economic concepts and policies.
- **CO2** shows a minor gap, indicating the need for clearer understanding of factors of production and their real-life applications.

Overall Gap Status:

The identified gap is minor and does not affect the overall effectiveness of the course.

4. Areas for Improvement / Action Plan

To further improve learning outcomes, the following steps are suggested:

- Use more real-life examples related to social and economic issues

- Integrate case studies on Indian economic policies
- Encourage classroom discussions linking economics with social work practice
- Strengthen conceptual clarity through revision sessions

These measures will enhance application-oriented economic understanding.

5. Summary and Conclusion

The **Introduction to Economics** course is well-structured and effectively delivered, with most course outcomes achieved beyond the target levels. Minor gaps identified provide clear scope for improvement.

Overall, the course strengthens students' **economic awareness, analytical ability, and understanding of development issues**, supporting effective social work practice.

Participatory Rural Appraisal

BSW

SEM - 3

1. Course Overview

The course **Participatory Rural Appraisal (FP 201)** is offered to **second-year BSW students** to develop an understanding of participatory approaches used in rural development and social work practice. The course aligns with the institution's vision of **human dignity, social justice, and community empowerment**.

The **Course Outcomes (COs)** focus on understanding PRA concepts, analyzing rural realities, evaluating participatory tools, and applying PRA methods for community engagement and decision-making. The **CO–PO mapping** shows strong alignment with program outcomes related to **social analysis, community intervention, problem-solving, research application, and communication skills**.

The overall **average CO attainment is 2.94**, indicating very good achievement of learning outcomes through **direct (80%) and indirect (20%) assessment methods**.

2. Purpose of the Course Overview Report

The purpose of this course overview report is to:

- Evaluate the effectiveness of participatory and field-based teaching methods
- Measure attainment of course outcomes
- Ensure alignment between course outcomes and program outcomes
- Identify strengths and minor gaps in practical learning
- Support academic quality assurance and continuous improvement

3. Gap Analysis

The gap analysis compares **target attainment levels** with **actual student attainment**.

Key Observations:

- **All COs (CO1–CO5)** have achieved attainment levels above their respective targets, showing strong understanding and application of PRA concepts and tools.
- Slight variations are observed in **CO1 and CO4**, related to conceptual clarity and evaluation of PRA tools, which is expected due to the analytical nature of the subject.
- Indirect attainment is consistently high, indicating positive student feedback and engagement.

Overall Gap Status:

No significant gaps are identified. The course outcomes are achieved satisfactorily.

4. Areas for Improvement / Action Plan

To further strengthen learning outcomes, the following actions are suggested:

- Increase hands-on PRA exercises and community-based activities
- Provide additional guidance on evaluation and documentation of PRA tools
- Encourage reflective discussions after field-based learning
- Integrate case studies from diverse rural contexts

These measures will further enhance participatory skills and analytical understanding.

5. Summary and Conclusion

The **Participatory Rural Appraisal** course is well-designed and effectively delivered, with all course outcomes achieved beyond target levels. The course plays a key role in developing **community engagement skills, participatory learning, and practical competence** among social work students.

Overall, the course strongly supports students' readiness for **field practice and community-based social work interventions**.

Social Entrepreneurship

BSW

SEM - 3

1. Course Overview

The course **Social Entrepreneurship (VSC 201)** is offered to second-year BSW students to develop an understanding of entrepreneurial approaches to address social problems. The course aligns with the institution's vision of promoting **human dignity and social justice** and prepares students to design sustainable social enterprises.

The Course Outcomes focus on ideation, design thinking, understanding the social entrepreneurship ecosystem, feasibility analysis, sustainability strategies, and preparation of business plans. These outcomes are well aligned with Program Outcomes related to **critical thinking, problem-solving, ethical practice, communication skills, and professional competence**.

The overall Course Outcome attainment is **2.83**, indicating that students have successfully achieved the expected learning levels through **direct (80%)** and **indirect (20%)** assessment methods .

2. Purpose of the Course Overview Report

The purpose of this Course Overview Report is to:

- Evaluate the effectiveness of course design and delivery
- Measure the attainment of Course Outcomes
- Ensure alignment between Course Outcomes and Program Outcomes
- Identify strengths and minor gaps in learning
- Support quality assurance and continuous improvement

This report provides a structured review of student learning and teaching effectiveness.

3. Gap Analysis

The gap analysis compares the target attainment levels with actual student performance.

Key Observations:

- **CO1 to CO5** have met or exceeded the target attainment levels, showing strong understanding of ideation, design thinking, feasibility analysis, and business planning.
- Direct and indirect attainment levels are consistently high, reflecting effective assessment methods and student engagement.
- Some Program Outcomes related to **field-based intervention and community application** show comparatively lower linkage, as the course is more concept- and planning-oriented than field-focused.

Overall Gap Status:

The gaps identified are **minimal** and do not impact overall course effectiveness. They indicate scope for strengthening practical and community-linked exposure.

4. Areas for Improvement / Action Plan

To further strengthen learning outcomes, the following actions are proposed:

- Include **case studies of local social enterprises**

- Provide **hands-on exposure** through interaction with social entrepreneurs
- Encourage **group-based project work** linked to real social issues
- Strengthen reflective learning through feedback and self-assessment

These measures will enhance practical understanding and strengthen application-based learning.

5. Summary and Conclusion

The **Social Entrepreneurship (VSC 201)** course is well-structured and effectively delivered. All Course Outcomes have been achieved beyond the target levels, indicating strong student performance and effective teaching strategies.

Overall, the course plays a key role in developing **innovative thinking, problem-solving ability, and social responsibility** among BSW students and supports the institution's mission of creating socially committed professionals.

Social Work Practice with Communities

BSW

SEM - 3

1. Course Overview

The course **Social Work Practice with Communities (Major 203)** is offered to second-year BSW students to build knowledge and skills for working with communities. The course reflects the institution's vision of promoting **human dignity and social justice** and prepares students for community-based social work practice.

The Course Outcomes focus on understanding community concepts, the evolution of community practice in India, evaluation of community interventions, use of community mapping tools, and analysis of social dynamics such as caste, gender, religion, and ability. These outcomes are well aligned with Program Outcomes related to **critical thinking, ethical practice, problem-solving, research orientation, and communication skills**.

The overall Course Outcome attainment is **2.78**, indicating satisfactory achievement of expected learning levels through **direct (80%)** and **indirect (20%)** assessment methods.

2. Purpose of the Course Overview Report

The purpose of this Course Overview Report is to:

- Review the effectiveness of course delivery
- Measure attainment of Course Outcomes
- Ensure alignment between Course Outcomes and Program Outcomes
- Identify strengths and areas for improvement

- Support academic planning and continuous quality improvement

This report helps in maintaining academic standards and improving teaching–learning practices.

3. Gap Analysis

The gap analysis compares target attainment with actual student performance.

Key Observations:

- All **Course Outcomes (CO1–CO5)** have achieved attainment levels **above the target**, showing strong student understanding of community concepts and practice tools.
- **CO3, CO4, and CO5** show higher attainment, indicating effective learning in community intervention analysis and application of mapping tools.
- Some Program Outcomes related to **lifelong learning and multidisciplinary collaboration** show comparatively lower attainment, as these require extended field exposure beyond classroom learning.

Overall Gap Status:

The gaps identified are **minor** and do not affect the overall effectiveness of the course.

4. Areas for Improvement / Action Plan

To further strengthen learning outcomes, the following actions are suggested:

- Increase **field-based community mapping exercises**
- Integrate **case studies from local communities**
- Strengthen **group work and participatory learning activities**
- Encourage reflective learning through **field reports and feedback**

These steps will enhance practical understanding and strengthen community engagement skills.

5. Summary and Conclusion

The course **Social Work Practice with Communities (Major 203)** is well-structured and effectively delivered. All Course Outcomes have been achieved beyond the target levels, indicating effective teaching and assessment methods.

Overall, the course significantly contributes to developing **community practice skills, critical analysis, and social responsibility** among BSW students and supports the institution's mission of value-based social work education.

Social Work Practice with Groups

BSW

SEM - 3

1. Course Overview

The course **Social Work Practice with Groups (Major 201)** is offered to second-year BSW students to develop knowledge and skills required for effective group work practice. The course supports the institution's vision of promoting **human dignity, social justice, and ethical professional practice**.

The Course Outcomes focus on understanding group dynamics, communication and leadership styles, rapport building, session planning, facilitation strategies, and evaluation of group work interventions. These outcomes are well aligned with Program Outcomes related to **professional skills, ethical values, problem-solving abilities, communication, and research orientation**.

The overall Course Outcome attainment is **2.84**, indicating that students have achieved the expected learning levels satisfactorily through **direct (80%)** and **indirect (20%)** assessment methods .

2. Purpose of the Course Overview Report

The purpose of this Course Overview Report is to:

- Evaluate the effectiveness of course delivery
- Measure the attainment of Course Outcomes
- Ensure alignment between Course Outcomes and Program Outcomes
- Identify strengths and areas for improvement
- Support academic quality assurance and continuous improvement

This report helps in strengthening teaching–learning processes and maintaining academic standards.

3. Gap Analysis

The gap analysis compares target attainment levels with actual student attainment.

Key Observations:

- All **Course Outcomes (CO1–CO5)** have achieved attainment levels **above the target**, indicating strong student performance in group dynamics, facilitation, and intervention analysis.
- **CO3, CO4, and CO5** show higher gaps in a positive direction, reflecting effective application-based learning.
- Some Program Outcomes related to **multidisciplinary collaboration and lifelong learning** show comparatively lower attainment, as these require extended exposure

beyond classroom and structured group activities.

Overall Gap Status:

The gaps identified are **minor and positive**, and they do not affect the overall effectiveness of the course.

4. Areas for Improvement / Action Plan

To further enhance learning outcomes, the following actions are recommended:

- Increase **experiential learning** through simulated group sessions
- Introduce **real-life case discussions** from field practice
- Encourage **student-led group facilitation activities**
- Strengthen reflective learning through feedback and self-assessment

These steps will further improve practical group work skills and professional readiness.

5. Summary and Conclusion

The course **Social Work Practice with Groups (Major 201)** is well-designed and effectively implemented. All Course Outcomes have been achieved beyond the target levels, reflecting effective teaching strategies and active student engagement.

Overall, the course makes a significant contribution to developing **professional group work skills, ethical practice, and critical thinking** among BSW students and strongly supports the institution's mission of holistic social work education.

Theatre Skills

BSW

SEM - 3

1. Course Overview

The course **Theatre Skills (CC 201)** is offered to second-year BSW students to introduce theatre as a creative and effective medium for social awareness and social change. The course aligns with the institution's vision of promoting **human dignity, social justice, and ethical values**.

The Course Outcomes focus on understanding people's theatre, ethical use of theatre, analysis of theatre practices such as street plays and folk forms, evaluation of theatre for social impact, and application of acting, improvisation, scriptwriting, and direction skills. These outcomes are well aligned with Program Outcomes related to **communication skills, critical thinking, ethical practice, creativity, and social engagement**.

The overall average Course Outcome attainment is **2.94**, which indicates a high level of student achievement. Attainment is measured through **direct assessment (80%)** and **indirect assessment (20%)**, showing effective learning and assessment practices.

2. Purpose of the Course Overview Report

The purpose of this Course Overview Report is to:

- Review the effectiveness of course delivery
- Measure attainment of Course Outcomes
- Ensure alignment between Course Outcomes and Program Outcomes
- Identify strengths and improvement areas
- Support academic planning and continuous quality improvement

The report helps maintain academic standards and strengthen teaching–learning processes.

3. Gap Analysis

The gap analysis compares target attainment levels with actual student performance.

Key Observations:

- All **Course Outcomes (CO1–CO5)** have achieved attainment levels **above the target**, indicating strong student understanding and performance.
- **CO2 to CO5** show particularly high attainment due to performance-based learning and reflective assessments.
- Some Program Outcomes related to **multidisciplinary collaboration and lifelong learning** show relatively lower attainment, as these require extended exposure beyond course duration.

Overall Gap Status:

No major gaps are identified. The gaps observed are **positive**, indicating performance above expected levels.

4. Areas for Improvement / Action Plan

To further strengthen the course, the following steps are suggested:

- Increase **community-based theatre performances**
- Integrate **local social issues** into theatre projects
- Encourage **collaborative performances** and peer learning
- Strengthen reflection through performance reviews and feedback

These measures will enhance experiential learning and social engagement.

5. Summary and Conclusion

The **Theatre Skills (CC 201)** course is well-designed and effectively delivered. All Course Outcomes have been achieved beyond the target levels, reflecting strong student participation and effective assessment methods.

Overall, the course contributes significantly to developing **communication skills, creativity, ethical awareness, and social sensitivity** among BSW students and supports the institution's goal of holistic and value-based education.

COURSE OVERVIEW

BSW | Batch 2024-2027 | SECOND YEAR 2025-2026



Contemporary Development Studies

(Minor 201)

Course Overview

Vision

To contribute to building a new social order based on human dignity and social justice.

Mission

M1: To work with a preferential option for the vulnerable and exploited, both locally and globally.

M2: To build a cadre of young, competent professionals having a global perspective and a strong value base of compassion, personal integrity, moderation, tolerance and self-respect.

Program Outcome (PO)

Sr. No	PO	Competency	PI Number	PI's
1	Graduates will critically analyze social realities, understand their changing dynamics, and actively engage in processes that contribute to positive social transformation.	-	1.1	-
2	They will demonstrate an in-depth understanding of diverse communities, their unique challenges, and systemic inequalities, and advocate for social justice in their professional practice.	-	2.1	-
3	Graduates will apply appropriate social work methods and strategies to effectively work with individuals, groups, and communities, addressing various social issues.	-	3.1	-
4	They will embody professional social work values and ethics, ensuring integrity, respect, and accountability in all aspects of their practice.	-	4.1	-
5	Graduates will develop problem-solving abilities and intervention strategies tailored to the needs of marginalized and vulnerable populations.	-	5.1	-
6	They will integrate research and evidence-based knowledge to design, implement, and evaluate social work interventions effectively.	-	6.1	-
7	Graduates will exhibit strong communication skills and the ability to collaborate with multidisciplinary teams to address social challenges holistically.	-	7.1	-
8	They will demonstrate a commitment to lifelong learning, staying informed about emerging trends and practices in the field of social work.	-	8.1	-

Course Outcomes

CO1: To analyze approaches to development, contemporary development concern, and measurement tool of human development

CO2: To apply the measurement tool of human development and government policies in the field.

CO3: To analyse the contemporary development issues.

CO4: To evaluate policies based on policy development framework and strategies to effectively implement the policies.

CO - PO - PSO Mapping

CO / PO / PSO	PO1	PO2	PO3	PO4	PO5	PO6	PO7	PO8	Average
CO1	3	2	-	-	-	3	-	2	2.50
CO2	-	-	3	-	3	2	-	-	2.67
CO3	2	3	-	-	-	3	-	2	2.50
CO4	-	2	-	2	2	3	-	-	2.25
Average	2.5	2.33	3	2	2.5	2.75	-	2	

Program Outcome (PO) to PI Mapping

PO	Competency	Indicator	CO1	CO2	CO3	CO4	Average
PO1			-	-	-	-	-
Average			-	-	-	-	-

PO	Competency	Indicator	CO1	CO2	CO3	CO4	Average
PO2			-	-	-	-	-
Average			-	-	-	-	-

PO	Competency	Indicator	CO1	CO2	CO3	CO4	Average
PO3			-	-	-	-	-
Average			-	-	-	-	-

PO	Competency	Indicator	CO1	CO2	CO3	CO4	Average
PO4			-	-	-	-	-
Average			-	-	-	-	-

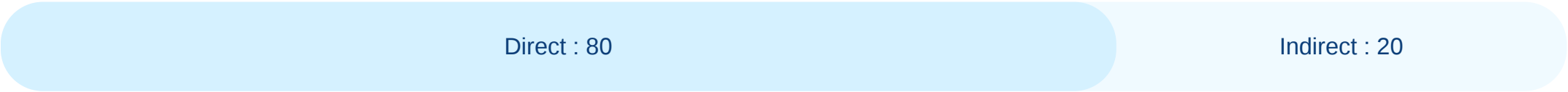
PO	Competency	Indicator	CO1	CO2	CO3	CO4	Average
PO5			-	-	-	-	-
Average			-	-	-	-	-

PO	Competency	Indicator	CO1	CO2	CO3	CO4	Average
PO6			-	-	-	-	-
Average			-	-	-	-	-

PO	Competency	Indicator	CO1	CO2	CO3	CO4	Average
PO7			-	-	-	-	-
Average			-	-	-	-	-

PO	Competency	Indicator	CO1	CO2	CO3	CO4	Average
PO8			-	-	-	-	-
Average			-	-	-	-	-

CO Weightages Based on attainment type



CO targets & Attainment Levels

COs	Target	Direct Attainment levels				Indirect Attainment levels			
		Level 0	Level 1	Level 2	Level 3	Level 0	Level 1	Level 2	Level 3
CO1	2.5	0 - 1	2 - 40	41 - 50	51 - 100	0 - 1	2 - 40	41 - 50	51 - 100
CO2	2.66	0 - 1	2 - 40	41 - 50	51 - 100	0 - 1	2 - 40	41 - 50	51 - 100
CO3	2.5	0 - 1	2 - 40	41 - 50	51 - 100	0 - 1	2 - 40	41 - 50	51 - 100
CO4	2.25	0 - 1	2 - 40	41 - 50	51 - 100	0 - 1	2 - 40	41 - 50	51 - 100

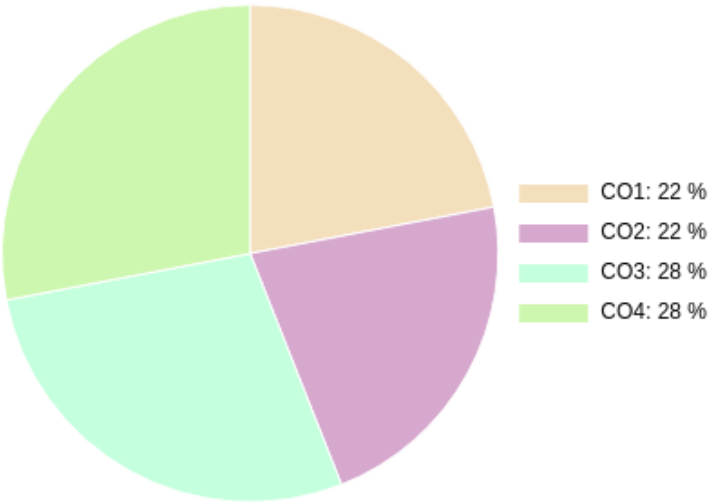
Formative (CIE) Assessments

Sr No	Exam Name	Total Marks	Threshold in %	CO1	CO2	CO3	CO4	Avg Attainment
1	Unit 1/Case Analysis Assignment	10	50	3	3	3	3	3
2	Unit 4/Test	10	50	3	3	3	3	3
3	Unit 2/Presentation	10	50	3	3	3	3	3
4	Unit 3/Test	10	50	3	3	3	3	3

Summative (SEE) Assessments

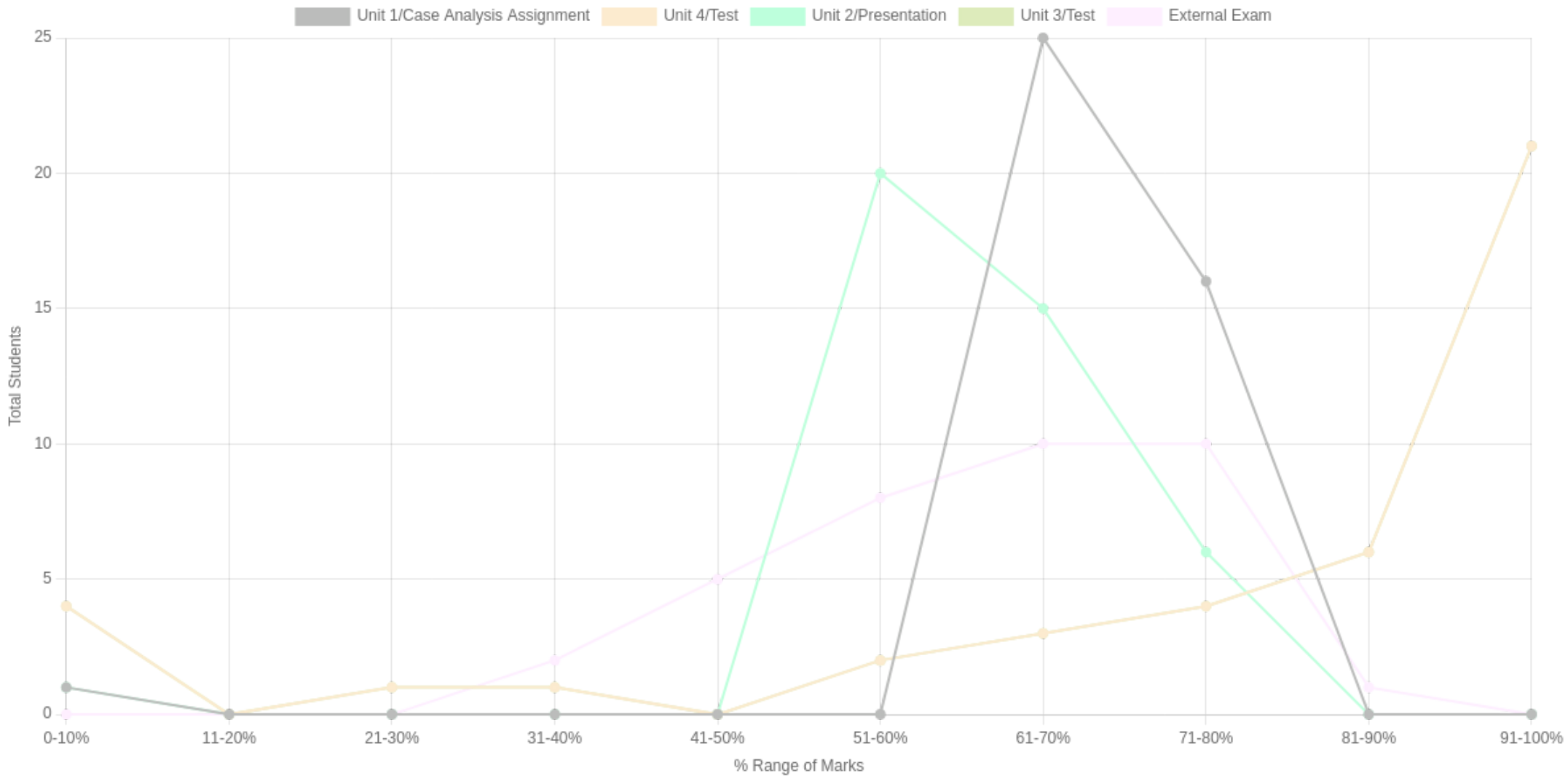
Sr No	Exam Name	Total Marks	Threshold in %	CO1	CO2	CO3	CO4	Avg Attainment
5	External Exam	60	50	2	3	2	2.5	2.37

CO Coverage



COs	CO1	CO2	CO3	CO4
100	22	22	28	28
%	22	22	28	28

Student % wise Distribution



Sr No	Assessment Title	Type	Total Marks	Avg Marks	Threshold in %	No of Students Scoring										Total Students Above Threshold
						0-10%	11-20%	21-30%	31-40%	41-50%	51-60%	61-70%	71-80%	81-90%	91-100%	
1	Unit 1/Case Analysis Assignment	F	10	7.21	50	1	0	0	0	0	0	25	16	0	0	41
2	Unit 4/Test	F	10	8	50	4	0	1	1	0	2	3	4	6	21	36
3	Unit 2/Presentation	F	10	6.5	50	1	0	0	0	0	20	15	6	0	0	41
4	Unit 3/Test	F	10	8	50	4	0	1	1	0	2	3	4	6	21	36
5	External Exam	S	60	20.48	50	0	0	0	2	5	8	10	10	1	0	31

Indirect Attainment

Feedback Details	CO wise analysis				
Course Exit Survey-BSW-Sem3-2025-2026 Type: Course Feedback Publish Date: 01/12/2025 Last Date: 04/12/2025 Feedback conduction: Backdated Total Students: 47 Responses Received: 39 Consider for Attainment: <input checked="" type="checkbox"/>	COS and Questions	CO1	CO2	CO3	CO4
		Q1	Q2	Q3	Q4
	Students Above Threshold	29/47	32/47	32/47	34/47
	Students Above Threshold in %	61.7%	68.08%	68.08%	72.34%
	Attainment After comparing with attainment Levels	3	3	3	3
	Average	3	3	3	3

CO Attainment

CO	Direct Attainment	Indirect Attainment	Final Attainment	Target	Gap	Justification
CO1	2.8	3	2.84	2.5	0.33	-
CO2	3	3	3	2.66	0.33	-
CO3	2.8	3	2.84	2.5	0.33	-
CO4	2.9	3	2.92	2.25	0.67	-

Average CO Attainment : 2.9

PO Direct Attainment

POs	PO1	PO2	PO3	PO4	PO5	PO6	PO7	PO8
Weighted Avg	2.5	2.33	3	2	2.5	2.75	-	2

Average CO Attainment : 2.9

POs	PO1	PO2	PO3	PO4	PO5	PO6	PO7	PO8
Calculation	2.5 (2.9) / 3	2.33 (2.9) / 3	3 (2.9) / 3	2 (2.9) / 3	2.5 (2.9) / 3	2.75 (2.9) / 3	0 (2.9) / 3	2 (2.9) / 3
Direct Attainment	2.42	2.25	2.90	1.93	2.42	2.66	0.00	1.93

COURSE OVERVIEW | BSW

COURSE OVERVIEW

BSW | Batch 2024-2027 | SECOND YEAR 2025-2026



Field Work III

(Major 202)

Course Overview

Vision

To contribute to building a new social order based on human dignity and social justice.

Mission

M1: To work with a preferential option for the vulnerable and exploited, both locally and globally.

M2: To build a cadre of young, competent professionals having a global perspective and a strong value base of compassion, personal integrity, moderation, tolerance and self-respect.

Program Outcome (PO)

Sr. No	PO	Competency	PI Number	PI's
1	Graduates will critically analyze social realities, understand their changing dynamics, and actively engage in processes that contribute to positive social transformation.	-	1.1	-
2	They will demonstrate an in-depth understanding of diverse communities, their unique challenges, and systemic inequalities, and advocate for social justice in their professional practice.	-	2.1	-
3	Graduates will apply appropriate social work methods and strategies to effectively work with individuals, groups, and communities, addressing various social issues.	-	3.1	-
4	They will embody professional social work values and ethics, ensuring integrity, respect, and accountability in all aspects of their practice.	-	4.1	-
5	Graduates will develop problem-solving abilities and intervention strategies tailored to the needs of marginalized and vulnerable populations.	-	5.1	-
6	They will integrate research and evidence-based knowledge to design, implement, and evaluate social work interventions effectively.	-	6.1	-
7	Graduates will exhibit strong communication skills and the ability to collaborate with multidisciplinary teams to address social challenges holistically.	-	7.1	-
8	They will demonstrate a commitment to lifelong learning, staying informed about emerging trends and practices in the field of social work.	-	8.1	-

Course Outcomes

CO1: Critical understanding of the organization and the problem situation and can link theory and practice.

CO2: Demonstrate problem-solving skills, administrative and communication skills in practice.

CO3: Responsibility and maturity in functioning in the organization and being self-aware as an individual and a professional.

CO4: Develop IEC materials and relevant programme media for community engagement and group sessions.

CO - PO - PSO Mapping

CO / PO / PSO	PO1	PO2	PO3	PO4	PO5	PO6	PO7	PO8	Average
CO1	3	2	2	-	-	3	-	-	2.50
CO2	-	-	3	-	3	-	3	2	2.75
CO3	2	-	-	3	-	-	3	2	2.50
CO4	-	3	-	-	2	2	3	-	2.50
Average	2.5	2.5	2.5	3	2.5	2.5	3	2	

Program Outcome (PO) to PI Mapping

PO	Competency	Indicator	CO1	CO2	CO3	CO4	Average
PO1			-	-	-	-	-
Average			-	-	-	-	-

PO	Competency	Indicator	CO1	CO2	CO3	CO4	Average
PO2			-	-	-	-	-
Average			-	-	-	-	-

PO	Competency	Indicator	CO1	CO2	CO3	CO4	Average
PO3			-	-	-	-	-
Average			-	-	-	-	-

PO	Competency	Indicator	CO1	CO2	CO3	CO4	Average
PO4			-	-	-	-	-
Average			-	-	-	-	-

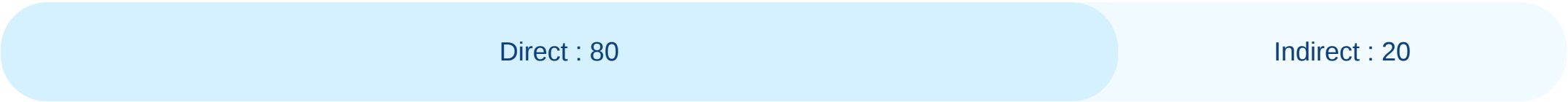
PO	Competency	Indicator	CO1	CO2	CO3	CO4	Average
PO5			-	-	-	-	-
Average			-	-	-	-	-

PO	Competency	Indicator	CO1	CO2	CO3	CO4	Average
PO6			-	-	-	-	-
Average			-	-	-	-	-

PO	Competency	Indicator	CO1	CO2	CO3	CO4	Average
PO7			-	-	-	-	-
Average			-	-	-	-	-

PO	Competency	Indicator	CO1	CO2	CO3	CO4	Average
PO8			-	-	-	-	-
Average			-	-	-	-	-

CO Weightages Based on attainment type



CO targets & Attainment Levels

COs	Target	Direct Attainment levels				Indirect Attainment levels			
		Level 0	Level 1	Level 2	Level 3	Level 0	Level 1	Level 2	Level 3
CO1	2.5	0 - 1	2 - 40	41 - 50	51 - 100	0 - 1	2 - 40	41 - 50	51 - 100
CO2	2.75	0 - 1	2 - 40	41 - 50	51 - 100	0 - 1	2 - 40	41 - 50	51 - 100
CO3	2.5	0 - 1	2 - 40	41 - 50	51 - 100	0 - 1	2 - 40	41 - 50	51 - 100
CO4	2.5	0 - 1	2 - 40	41 - 50	51 - 100	0 - 1	2 - 40	41 - 50	51 - 100

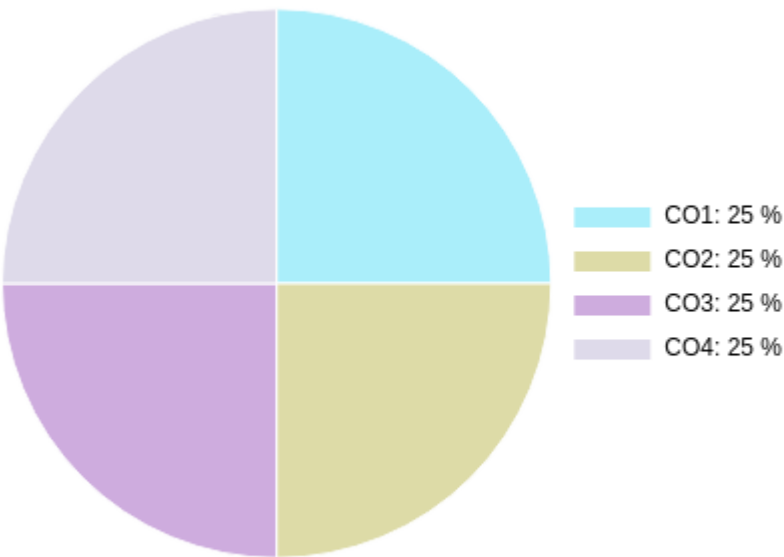
Formative (CIE) Assessments

Sr No	Exam Name	Total Marks	Threshold in %	CO1	CO2	CO3	CO4	Avg Attainment
-------	-----------	-------------	----------------	-----	-----	-----	-----	----------------

Summative (SEE) Assessments

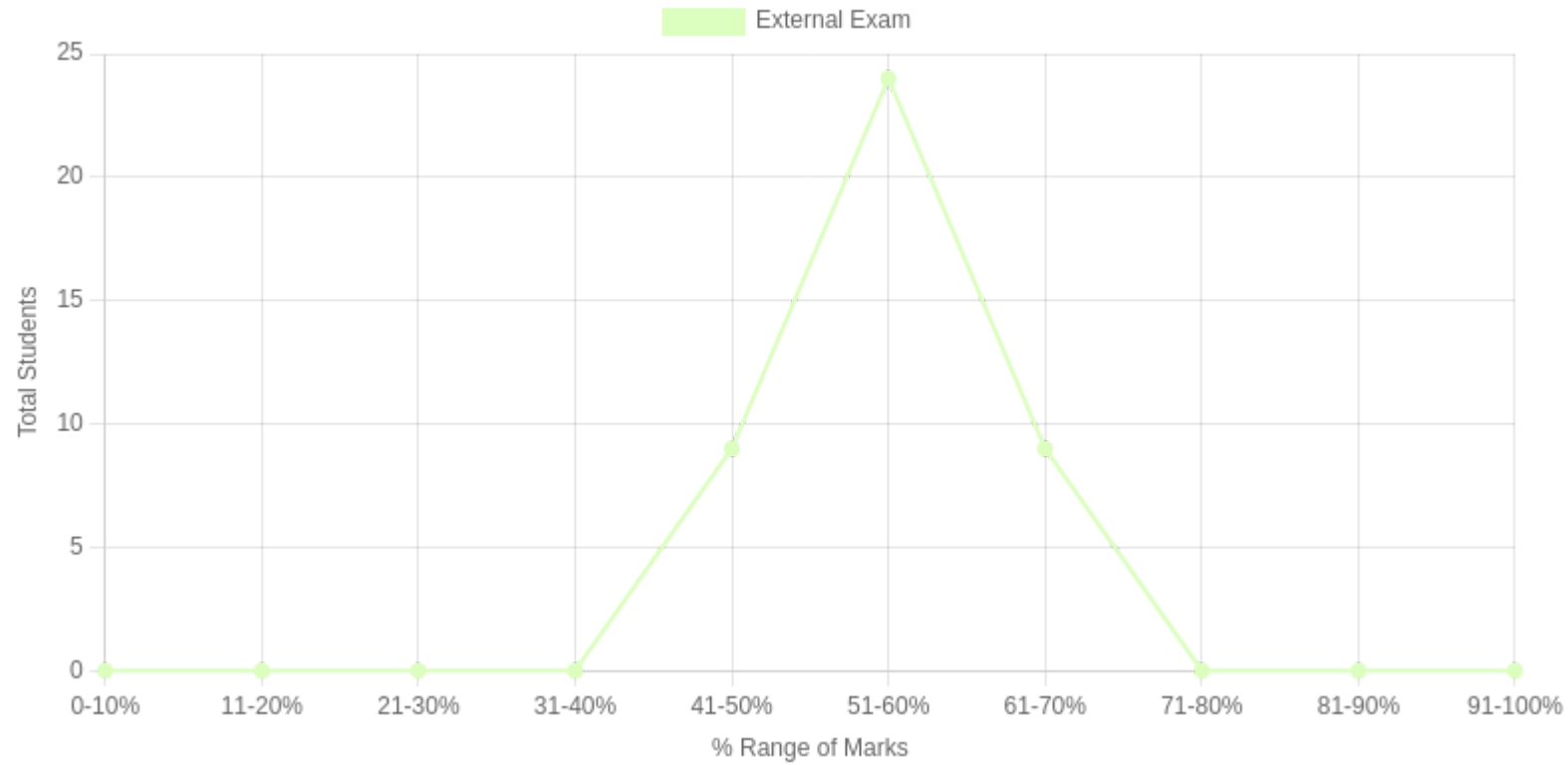
Sr No	Exam Name	Total Marks	Threshold in %	CO1	CO2	CO3	CO4	Avg Attainment
1	External Exam	100	50	3	3	3	3	3

CO Coverage



COs	CO1	CO2	CO3	CO4
100	25	25	25	25
%	25	25	25	25

Student % wise Distribution



Sr No	Assessment Title	Type	Total Marks	Avg Marks	Threshold in %	No of Students Scoring										Total Students Above Threshold
						0-10%	11-20%	21-30%	31-40%	41-50%	51-60%	61-70%	71-80%	81-90%	91-100%	
1	External Exam	S	100	55.9	50	0	0	0	0	9	24	9	0	0	0	34

Indirect Attainment

Feedback Details	CO wise analysis				
Course Exit Survey-BSW-Sem3-2025-2026 Type: Course Feedback Publish Date: 01/12/2025 Last Date: 04/12/2025 Feedback conduction: Backdated Total Students: 47 Responses Received: 39 Consider for Attainment: <input checked="" type="checkbox"/>	COS and Questions	CO1	CO2	CO3	CO4
		Q1	Q2	Q3	Q4
	Students Above Threshold	29/47	32/47	32/47	34/47
	Students Above Threshold in %	61.7%	68.08%	68.08%	72.34%
	Attainment After comparing with attainment Levels	3	3	3	3
	Average	3	3	3	3

CO Attainment

CO	Direct Attainment	Indirect Attainment	Final Attainment	Target	Gap	Justification
CO1	3	3	3	2.5	0.5	-
CO2	3	3	3	2.75	0.25	-
CO3	3	3	3	2.5	0.5	-
CO4	3	3	3	2.5	0.5	-

Average CO Attainment : 3

PO Direct Attainment

POs	PO1	PO2	PO3	PO4	PO5	PO6	PO7	PO8
Weighted Avg	2.5	2.5	2.5	3	2.5	2.5	3	2

Average CO Attainment : 3

POs	PO1	PO2	PO3	PO4	PO5	PO6	PO7	PO8
Calculation	2.5 (3) / 3	2.5 (3) / 3	2.5 (3) / 3	3 (3) / 3	2.5 (3) / 3	2.5 (3) / 3	3 (3) / 3	2 (3) / 3
Direct Attainment	2.50	2.50	2.50	3.00	2.50	2.50	3.00	2.00

COURSE OVERVIEW | BSW

COURSE OVERVIEW

BSW | Batch 2024-2027 | SECOND YEAR 2025-2026



Hindi

(AEC 201)

Course Overview

Vision

To contribute to building a new social order based on human dignity and social justice.

Mission

M1: To work with a preferential option for the vulnerable and exploited, both locally and globally.

M2: To build a cadre of young, competent professionals having a global perspective and a strong value base of compassion, personal integrity, moderation, tolerance and self-respect.

Program Outcome (PO)

Sr. No	PO	Competency	PI Number	PI's
1	Graduates will critically analyze social realities, understand their changing dynamics, and actively engage in processes that contribute to positive social transformation.	-	1.1	-
2	They will demonstrate an in-depth understanding of diverse communities, their unique challenges, and systemic inequalities, and advocate for social justice in their professional practice.	-	2.1	-
3	Graduates will apply appropriate social work methods and strategies to effectively work with individuals, groups, and communities, addressing various social issues.	-	3.1	-
4	They will embody professional social work values and ethics, ensuring integrity, respect, and accountability in all aspects of their practice.	-	4.1	-
5	Graduates will develop problem-solving abilities and intervention strategies tailored to the needs of marginalized and vulnerable populations.	-	5.1	-
6	They will integrate research and evidence-based knowledge to design, implement, and evaluate social work interventions effectively.	-	6.1	-
7	Graduates will exhibit strong communication skills and the ability to collaborate with multidisciplinary teams to address social challenges holistically.	-	7.1	-
8	They will demonstrate a commitment to lifelong learning, staying informed about emerging trends and practices in the field of social work.	-	8.1	-

Course Outcomes

- CO1:** To remember basic Hindi grammar rules to enhance their foundational language skills.
- CO2:** To understand the importance of Hindi in professional communication, especially in social work, for effective engagement.
- CO3:** To apply reading comprehension skills to analyze articles, periodicals, and literary texts for critical insights.
- CO4:** To analyze the cultural and social themes in Hindi literature and their relevance to daily life for deeper understanding.
- CO5:** To evaluate personal language proficiency and areas for improvement in speaking, reading, and writing for self-enhancement.

CO - PO - PSO Mapping

CO / PO / PSO	PO1	PO2	PO3	PO4	PO5	PO6	PO7	PO8	Average
CO1	-	-	1	2	-	-	3	2	2.00
CO2	-	2	-	2	-	-	3	1	2.00
CO3	2	-	-	-	-	3	2	1	2.00
CO4	3	2	-	-	-	2	-	1	2.00
CO5	-	-	-	2	1	3	-	2	2.00
Average	2.5	2	1	2	1	2.66	2.66	1.4	

Program Outcome (PO) to PI Mapping

PO	Competency	Indicator	CO1	CO2	CO3	CO4	CO5	Average
PO1			-	-	-	-	-	-
Average			-	-	-	-	-	-

PO	Competency	Indicator	CO1	CO2	CO3	CO4	CO5	Average
PO2			-	-	-	-	-	-
Average			-	-	-	-	-	-

PO	Competency	Indicator	CO1	CO2	CO3	CO4	CO5	Average
PO3			-	-	-	-	-	-
Average			-	-	-	-	-	-

PO	Competency	Indicator	CO1	CO2	CO3	CO4	CO5	Average
PO4			-	-	-	-	-	-
Average			-	-	-	-	-	-

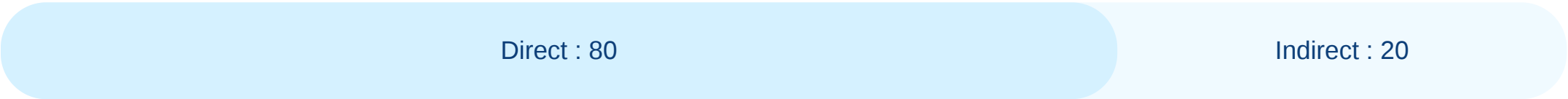
PO	Competency	Indicator	CO1	CO2	CO3	CO4	CO5	Average
PO5			-	-	-	-	-	-
Average			-	-	-	-	-	-

PO	Competency	Indicator	CO1	CO2	CO3	CO4	CO5	Average
PO6			-	-	-	-	-	-
Average			-	-	-	-	-	-

PO	Competency	Indicator	CO1	CO2	CO3	CO4	CO5	Average
PO7			-	-	-	-	-	-
Average			-	-	-	-	-	-

PO	Competency	Indicator	CO1	CO2	CO3	CO4	CO5	Average
PO8			-	-	-	-	-	-
Average			-	-	-	-	-	-

CO Weightages Based on attainment type



CO targets & Attainment Levels

COs	Target	Direct Attainment levels				Indirect Attainment levels			
		Level 0	Level 1	Level 2	Level 3	Level 0	Level 1	Level 2	Level 3
CO1	2	0 - 1	2 - 40	41 - 50	51 - 100	0 - 1	2 - 40	41 - 50	51 - 100
CO2	2	0 - 1	2 - 40	41 - 50	51 - 100	0 - 1	2 - 40	41 - 50	51 - 100
CO3	2	0 - 1	2 - 40	41 - 50	51 - 100	0 - 1	2 - 40	41 - 50	51 - 100
CO4	2	0 - 1	2 - 40	41 - 50	51 - 100	0 - 1	2 - 40	41 - 50	51 - 100
CO5	2	0 - 1	2 - 40	41 - 50	51 - 100	0 - 1	2 - 40	41 - 50	51 - 100

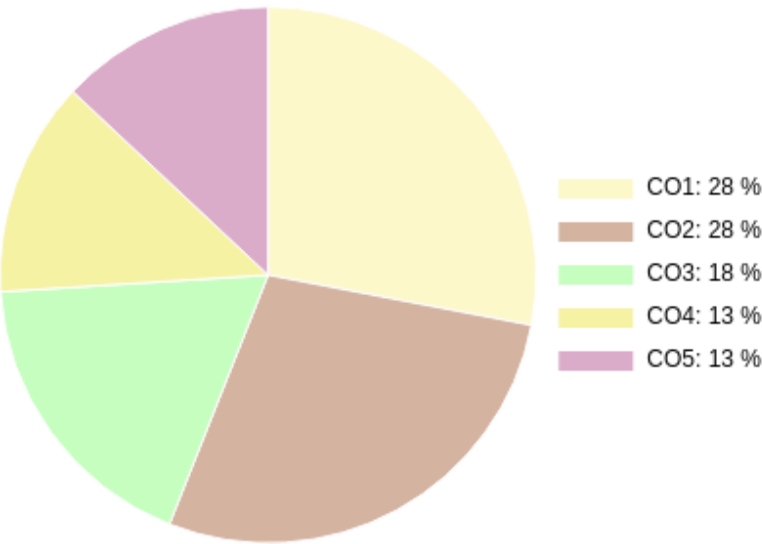
Formative (CIE) Assessments

Sr No	Exam Name	Total Marks	Threshold in %	CO1	CO2	CO3	CO4	CO5	Avg Attainment
1	Unit 2	10	50	3	3	3	3	3	3
2	Unit 1	10	50	3	3	3	3	3	3

Summative (SEE) Assessments

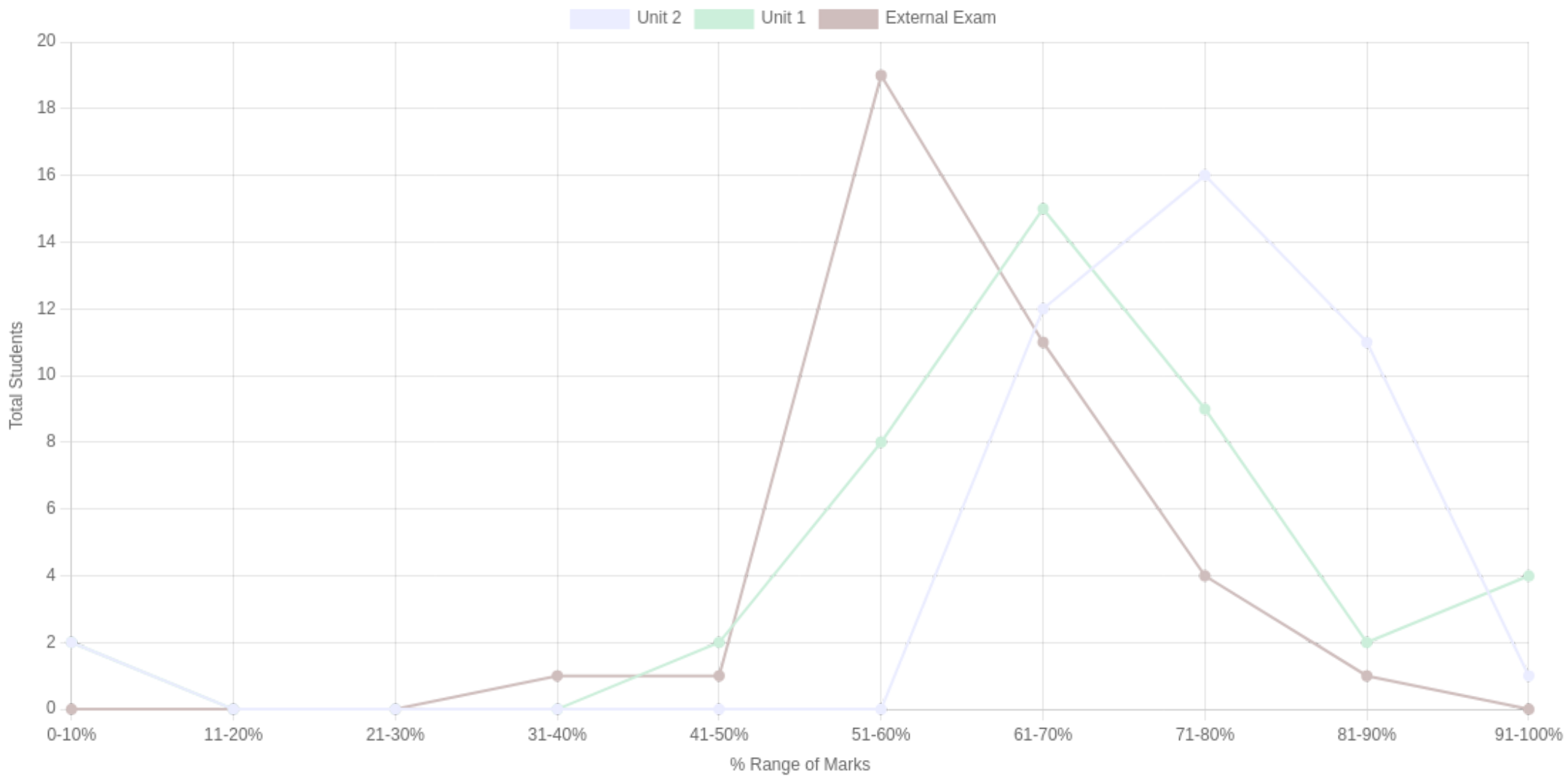
Sr No	Exam Name	Total Marks	Threshold in %	CO1	CO2	CO3	CO4	CO5	Avg Attainment
3	External Exam	30	50	3	3	3	3	3	3

CO Coverage



COs	CO1	CO2	CO3	CO4	CO5
50	14	14	9	6.5	6.5
%	28	28	18	13	13

Student % wise Distribution



Sr No	Assessment Title	Type	Total Marks	Avg Marks	Threshold in %	No of Students Scoring										Total Students Above Threshold
						0-10%	11-20%	21-30%	31-40%	41-50%	51-60%	61-70%	71-80%	81-90%	91-100%	
1	Unit 2	F	10	7.64	50	2	0	0	0	0	0	12	16	11	1	40
2	Unit 1	F	10	6.97	50	2	0	0	0	2	8	15	9	2	4	40
3	External Exam	S	30	18.13	50	0	0	0	1	1	19	11	4	1	0	36

Indirect Attainment

Feedback Details	CO wise analysis					
Course Exit Survey-BSW-Sem3-2025-2026 Type: Course Feedback Publish Date: 01/12/2025 Last Date: 04/12/2025 Feedback conduction: Backdated Total Students: 47 Responses Received: 39 Consider for Attainment: <input checked="" type="checkbox"/>	COS and Questions	CO1	CO2	CO3	CO4	CO5
		Q1	Q2	Q3	Q4	Q5
	Students Above Threshold	29/47	32/47	32/47	34/47	31/47
	Students Above Threshold in %	61.7%	68.08%	68.08%	72.34%	65.95%
	Attainment After comparing with attainment Levels	3	3	3	3	3
	Average	3	3	3	3	3

CO Attainment

CO	Direct Attainment	Indirect Attainment	Final Attainment	Target	Gap	Justification
CO1	3	3	3	2	1	-
CO2	3	3	3	2	1	-
CO3	3	3	3	2	1	-
CO4	3	3	3	2	1	-
CO5	3	3	3	2	1	-

Average CO Attainment : 3

PO Direct Attainment

POs	PO1	PO2	PO3	PO4	PO5	PO6	PO7	PO8
Weighted Avg	2.5	2	1	2	1	2.66	2.66	1.4

Average CO Attainment : 3

POs	PO1	PO2	PO3	PO4	PO5	PO6	PO7	PO8
Calculation	2.5 (3) / 3	2 (3) / 3	1 (3) / 3	2 (3) / 3	1 (3) / 3	2.66 (3) / 3	2.66 (3) / 3	1.4 (3) / 3
Direct Attainment	2.50	2.00	1.00	2.00	1.00	2.66	2.66	1.40

COURSE OVERVIEW | BSW

COURSE OVERVIEW

BSW | Batch 2024-2027 | SECOND YEAR 2025-2026



Introduction to Economics

(OE 201)

Course Overview

Vision

To contribute to building a new social order based on human dignity and social justice.

Mission

M1: To work with a preferential option for the vulnerable and exploited, both locally and globally.

M2: To build a cadre of young, competent professionals having a global perspective and a strong value base of compassion, personal integrity, moderation, tolerance and self-respect.

Program Outcome (PO)

Sr. No	PO	Competency	PI Number	PI's
1	Graduates will critically analyze social realities, understand their changing dynamics, and actively engage in processes that contribute to positive social transformation.	-	1.1	-
2	They will demonstrate an in-depth understanding of diverse communities, their unique challenges, and systemic inequalities, and advocate for social justice in their professional practice.	-	2.1	-
3	Graduates will apply appropriate social work methods and strategies to effectively work with individuals, groups, and communities, addressing various social issues.	-	3.1	-
4	They will embody professional social work values and ethics, ensuring integrity, respect, and accountability in all aspects of their practice.	-	4.1	-
5	Graduates will develop problem-solving abilities and intervention strategies tailored to the needs of marginalized and vulnerable populations.	-	5.1	-
6	They will integrate research and evidence-based knowledge to design, implement, and evaluate social work interventions effectively.	-	6.1	-
7	Graduates will exhibit strong communication skills and the ability to collaborate with multidisciplinary teams to address social challenges holistically.	-	7.1	-
8	They will demonstrate a commitment to lifelong learning, staying informed about emerging trends and practices in the field of social work.	-	8.1	-

Course Outcomes

CO1: Remember definitions and basic concepts of economics, including demand, supply, and market structures.

CO2: Understanding the factors of production (land, labor, capital) and their characteristics

CO3: Analyzing the theories of national income, rent, wages, interest, and profit

CO4: Evaluate the effectiveness of economic policies addressing challenges in primary, secondary, and tertiary sectors in India.

CO5: Apply the laws of demand and supply to interpret economic behavior.

CO - PO - PSO Mapping

CO / PO / PSO	PO1	PO2	PO3	PO4	PO5	PO6	PO7	PO8	Average
CO1	3	2	-	-	-	2	-	1	2.00
CO2	2	3	-	-	-	-	2	1	2.00
CO3	3	2	-	-	-	3	-	1	2.25
CO4	2	-	-	2	2	3	-	-	2.25
CO5	-	-	3	-	3	2	2	-	2.50
Average	2.5	2.33	3	2	2.5	2.5	2	1	

Program Outcome (PO) to PI Mapping

PO	Competency	Indicator	CO1	CO2	CO3	CO4	CO5	Average
PO1			-	-	-	-	-	-
Average			-	-	-	-	-	-

PO	Competency	Indicator	CO1	CO2	CO3	CO4	CO5	Average
PO2			-	-	-	-	-	-
Average			-	-	-	-	-	-

PO	Competency	Indicator	CO1	CO2	CO3	CO4	CO5	Average
PO3			-	-	-	-	-	-
Average			-	-	-	-	-	-

PO	Competency	Indicator	CO1	CO2	CO3	CO4	CO5	Average
PO4			-	-	-	-	-	-
Average			-	-	-	-	-	-

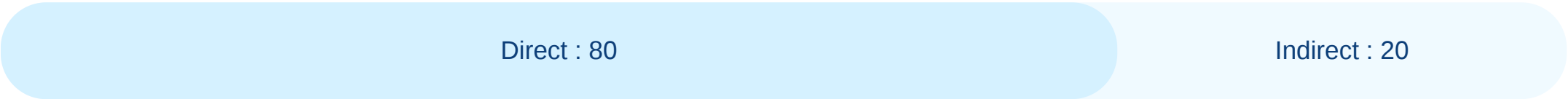
PO	Competency	Indicator	CO1	CO2	CO3	CO4	CO5	Average
PO5			-	-	-	-	-	-
Average			-	-	-	-	-	-

PO	Competency	Indicator	CO1	CO2	CO3	CO4	CO5	Average
PO6			-	-	-	-	-	-
Average			-	-	-	-	-	-

PO	Competency	Indicator	CO1	CO2	CO3	CO4	CO5	Average
PO7			-	-	-	-	-	-
Average			-	-	-	-	-	-

PO	Competency	Indicator	CO1	CO2	CO3	CO4	CO5	Average
PO8			-	-	-	-	-	-
Average			-	-	-	-	-	-

CO Weightages Based on attainment type



CO targets & Attainment Levels

COs	Target	Direct Attainment levels				Indirect Attainment levels			
		Level 0	Level 1	Level 2	Level 3	Level 0	Level 1	Level 2	Level 3
CO1	2	0 - 1	2 - 40	41 - 50	51 - 100	0 - 1	2 - 40	41 - 50	51 - 100
CO2	2	0 - 1	2 - 40	41 - 50	51 - 100	0 - 1	2 - 40	41 - 50	51 - 100
CO3	2.25	0 - 1	2 - 40	41 - 50	51 - 100	0 - 1	2 - 40	41 - 50	51 - 100
CO4	2.25	0 - 1	2 - 40	41 - 50	51 - 100	0 - 1	2 - 40	41 - 50	51 - 100
CO5	2.5	0 - 1	2 - 40	41 - 50	51 - 100	0 - 1	2 - 40	41 - 50	51 - 100

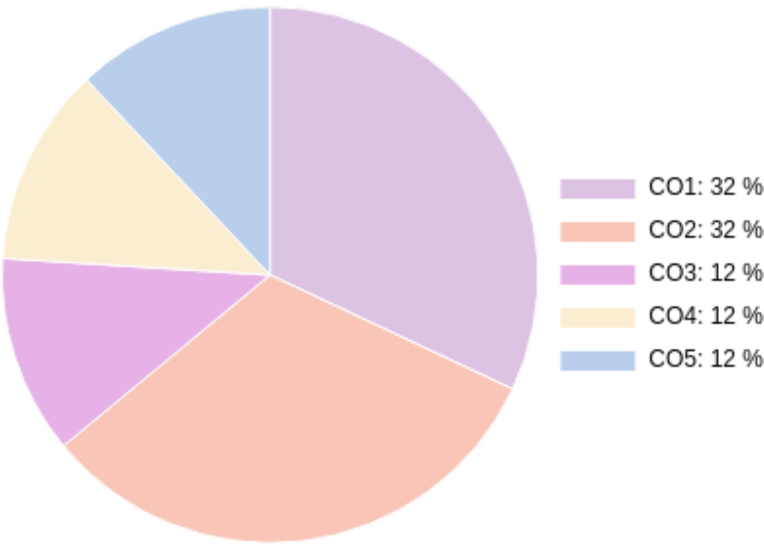
Formative (CIE) Assessments

Sr No	Exam Name	Total Marks	Threshold in %	CO1	CO2	CO3	CO4	CO5	Avg Attainment
1	Unit 2	10	50	3	3	3	3	3	3
2	Unit 1	10	50	3	3	3	3	3	3

Summative (SEE) Assessments

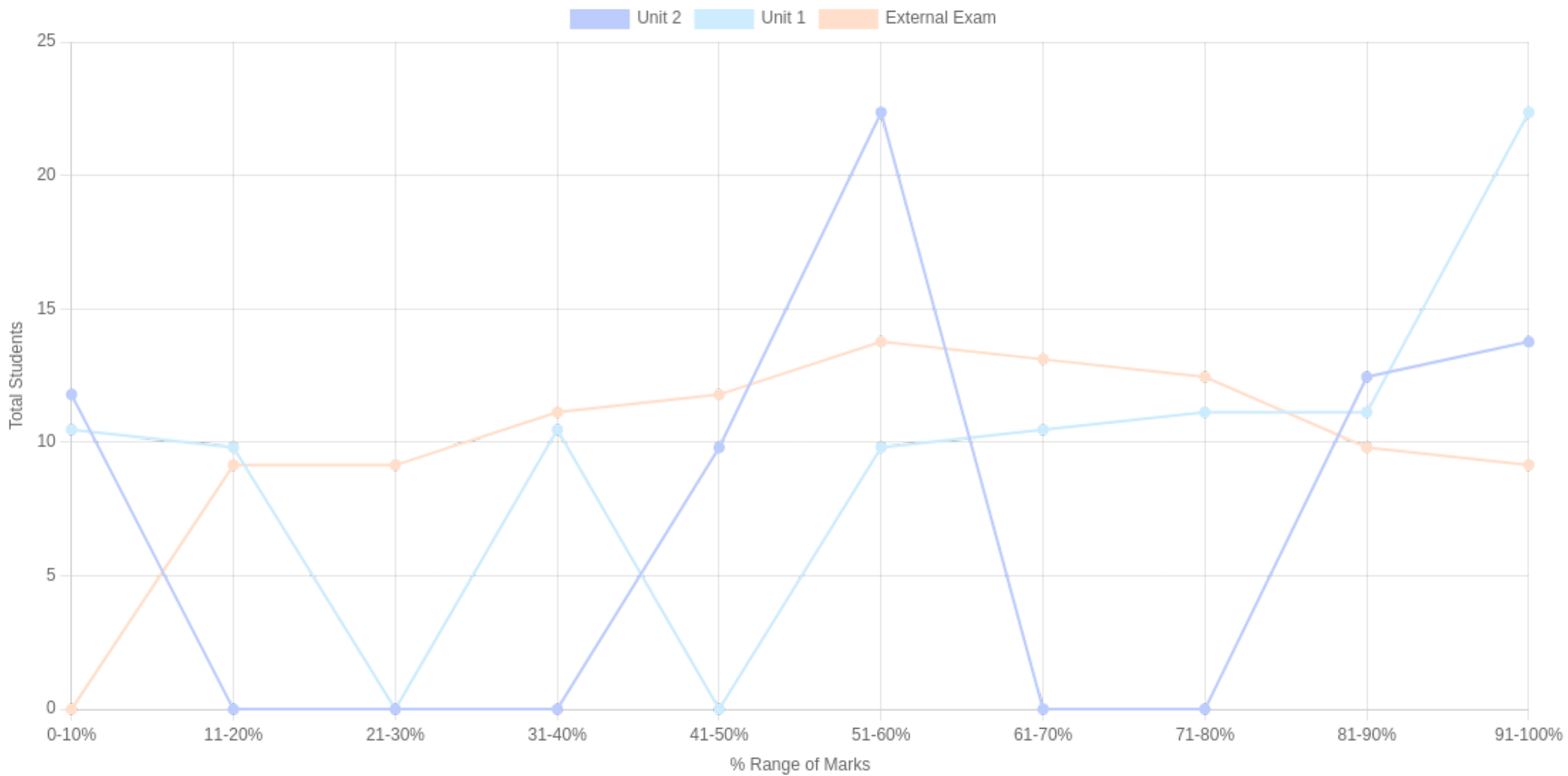
Sr No	Exam Name	Total Marks	Threshold in %	CO1	CO2	CO3	CO4	CO5	Avg Attainment
3	External Exam	30	50	3	1	3	3	3	2.6

CO Coverage



COs	CO1	CO2	CO3	CO4	CO5
50	16	16	6	6	6
%	32	32	12	12	12

Student % wise Distribution



Sr No	Assessment Title	Type	Total Marks	Avg Marks	Threshold in %	No of Students Scoring										Total Students Above Threshold
						0-10%	11-20%	21-30%	31-40%	41-50%	51-60%	61-70%	71-80%	81-90%	91-100%	
1	Unit 2	F	10	6.4	50	5	0	0	0	2	21	0	0	6	8	35
2	Unit 1	F	10	7.61	50	3	2	0	3	0	2	3	4	4	21	34
3	External Exam	S	30	11.77	50	0	1	1	4	5	8	7	6	2	1	27

Indirect Attainment

Feedback Details	CO wise analysis					
Course Exit Survey-BSW-Sem3-2025-2026 Type: Course Feedback Publish Date: 01/12/2025 Last Date: 04/12/2025 Feedback conduction: Backdated Total Students: 47 Responses Received: 39 Consider for Attainment: <input checked="" type="checkbox"/>	COS and Questions	CO1	CO2	CO3	CO4	CO5
		Q1	Q2	Q3	Q4	Q5
	Students Above Threshold	29/47	32/47	32/47	34/47	31/47
	Students Above Threshold in %	61.7%	68.08%	68.08%	72.34%	65.95%
	Attainment After comparing with attainment Levels	3	3	3	3	3
	Average	3	3	3	3	3

CO Attainment

CO	Direct Attainment	Indirect Attainment	Final Attainment	Target	Gap	Justification
CO1	3	3	3	2	1	-
CO2	2.33	3	2.46	2	0.46	-
CO3	3	3	3	2.25	0.75	-
CO4	3	3	3	2.25	0.75	-
CO5	3	3	3	2.5	0.5	-

Average CO Attainment : 2.89

PO Direct Attainment

POs	PO1	PO2	PO3	PO4	PO5	PO6	PO7	PO8
Weighted Avg	2.5	2.33	3	2	2.5	2.5	2	1

Average CO Attainment : 2.89

POs	PO1	PO2	PO3	PO4	PO5	PO6	PO7	PO8
Calculation	2.5 (2.89) / 3	2.33 (2.89) / 3	3 (2.89) / 3	2 (2.89) / 3	2.5 (2.89) / 3	2.5 (2.89) / 3	2 (2.89) / 3	1 (2.89) / 3
Direct Attainment	2.41	2.24	2.89	1.93	2.41	2.41	1.93	0.96

COURSE OVERVIEW | BSW

COURSE OVERVIEW

BSW | Batch 2024-2027 | SECOND YEAR 2025-2026



Participatory Rural Appraisal

(FP 201)

Course Overview

Vision

To contribute to building a new social order based on human dignity and social justice.

Mission

M1: To work with a preferential option for the vulnerable and exploited, both locally and globally.

M2: To build a cadre of young, competent professionals having a global perspective and a strong value base of compassion, personal integrity, moderation, tolerance and self-respect.

Program Outcome (PO)

Sr. No	PO	Competency	PI Number	PI's
1	Graduates will critically analyze social realities, understand their changing dynamics, and actively engage in processes that contribute to positive social transformation.	-	1.1	-
2	They will demonstrate an in-depth understanding of diverse communities, their unique challenges, and systemic inequalities, and advocate for social justice in their professional practice.	-	2.1	-
3	Graduates will apply appropriate social work methods and strategies to effectively work with individuals, groups, and communities, addressing various social issues.	-	3.1	-
4	They will embody professional social work values and ethics, ensuring integrity, respect, and accountability in all aspects of their practice.	-	4.1	-
5	Graduates will develop problem-solving abilities and intervention strategies tailored to the needs of marginalized and vulnerable populations.	-	5.1	-
6	They will integrate research and evidence-based knowledge to design, implement, and evaluate social work interventions effectively.	-	6.1	-
7	Graduates will exhibit strong communication skills and the ability to collaborate with multidisciplinary teams to address social challenges holistically.	-	7.1	-
8	They will demonstrate a commitment to lifelong learning, staying informed about emerging trends and practices in the field of social work.	-	8.1	-

Course Outcomes

- CO1:** Remember the definitions, principles, and historical evolution of PRA and related participatory methods.
- CO2:** Understand the contextual relevance of participatory approaches in social work and rural settings
- CO3:** Analyze the rural realities and challenges through mapping exercises like Transect Walk and Resource Mapping.
- CO4:** Evaluate the effectiveness of PRA tools and methodologies in addressing rural challenges.
- CO5:** Apply the PRA tools to engage with communities, gather data, and facilitate participatory decision-making.

CO - PO - PSO Mapping

CO / PO / PSO	PO1	PO2	PO3	PO4	PO5	PO6	PO7	PO8	Average
CO1	3	2	-	-	-	2	-	1	2.00
CO2	2	3	-	-	-	-	2	1	2.00
CO3	3	2	-	-	-	3	-	-	2.67
CO4	2	-	-	2	2	3	-	-	2.25
CO5	-	-	3	-	3	2	2	-	2.50
Average	2.5	2.33	3	2	2.5	2.5	2	1	

Program Outcome (PO) to PI Mapping

PO	Competency	Indicator	CO1	CO2	CO3	CO4	CO5	Average
PO1			-	-	-	-	-	-
Average			-	-	-	-	-	-

PO	Competency	Indicator	CO1	CO2	CO3	CO4	CO5	Average
PO2			-	-	-	-	-	-
Average			-	-	-	-	-	-

PO	Competency	Indicator	CO1	CO2	CO3	CO4	CO5	Average
PO3			-	-	-	-	-	-
Average			-	-	-	-	-	-

PO	Competency	Indicator	CO1	CO2	CO3	CO4	CO5	Average
PO4			-	-	-	-	-	-
Average			-	-	-	-	-	-

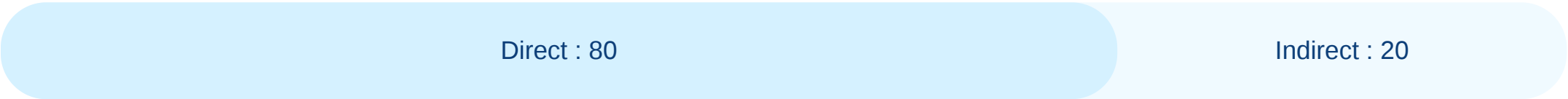
PO	Competency	Indicator	CO1	CO2	CO3	CO4	CO5	Average
PO5			-	-	-	-	-	-
Average			-	-	-	-	-	-

PO	Competency	Indicator	CO1	CO2	CO3	CO4	CO5	Average
PO6			-	-	-	-	-	-
Average			-	-	-	-	-	-

PO	Competency	Indicator	CO1	CO2	CO3	CO4	CO5	Average
PO7			-	-	-	-	-	-
Average			-	-	-	-	-	-

PO	Competency	Indicator	CO1	CO2	CO3	CO4	CO5	Average
PO8			-	-	-	-	-	-
Average			-	-	-	-	-	-

CO Weightages Based on attainment type



CO targets & Attainment Levels

COs	Target	Direct Attainment levels				Indirect Attainment levels			
		Level 0	Level 1	Level 2	Level 3	Level 0	Level 1	Level 2	Level 3
CO1	2	0 - 1	2 - 40	41 - 50	51 - 100	0 - 1	2 - 40	41 - 50	51 - 100
CO2	2	0 - 1	2 - 40	41 - 50	51 - 100	0 - 1	2 - 40	41 - 50	51 - 100
CO3	2.66	0 - 1	2 - 40	41 - 50	51 - 100	0 - 1	2 - 40	41 - 50	51 - 100
CO4	2.25	0 - 1	2 - 40	41 - 50	51 - 100	0 - 1	2 - 40	41 - 50	51 - 100
CO5	2.5	0 - 1	2 - 40	41 - 50	51 - 100	0 - 1	2 - 40	41 - 50	51 - 100

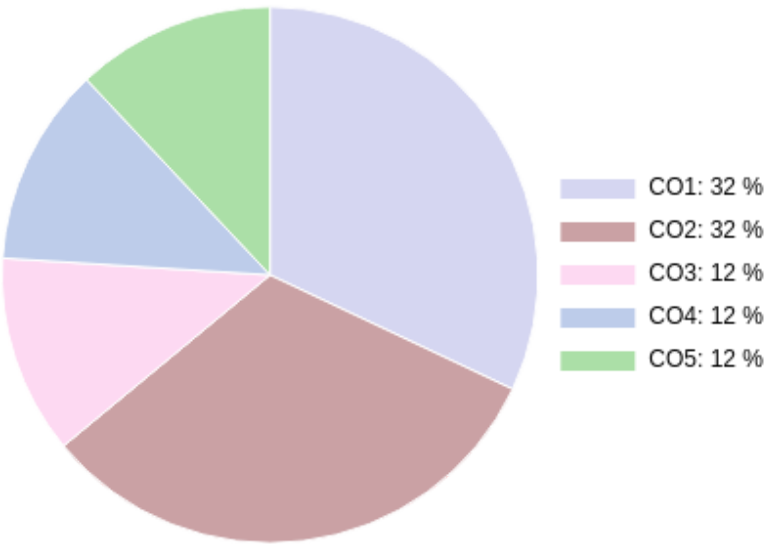
Formative (CIE) Assessments

Sr No	Exam Name	Total Marks	Threshold in %	CO1	CO2	CO3	CO4	CO5	Avg Attainment
1	Unit 1/Written Assignment & Presentation	10	50	3	3	3	3	3	3
2	Unit 2/Written Submission & Qualitative Test	10	50	3	3	3	3	3	3

Summative (SEE) Assessments

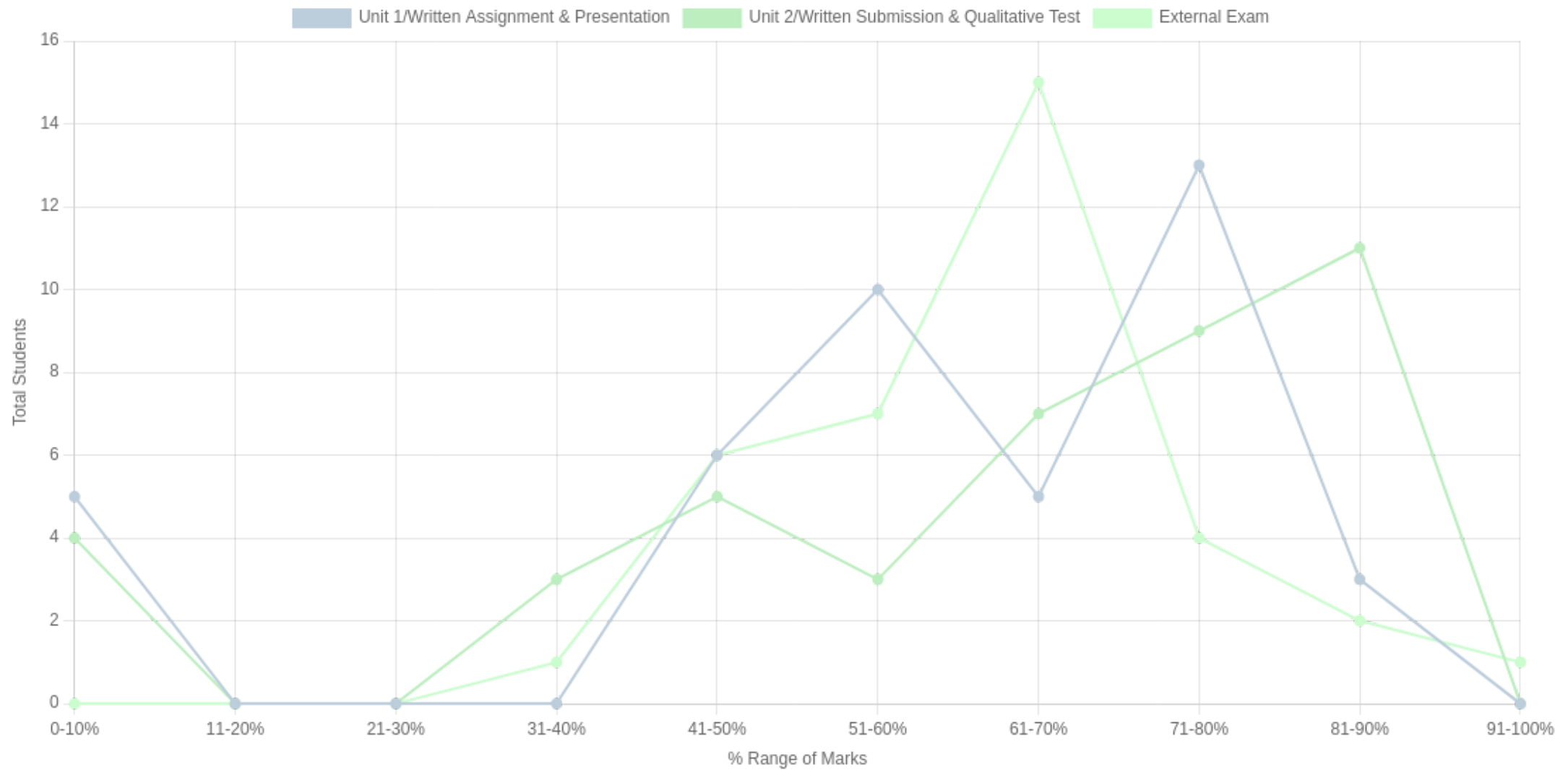
Sr No	Exam Name	Total Marks	Threshold in %	CO1	CO2	CO3	CO4	CO5	Avg Attainment
3	External Exam	30	50	2	3	3	3	3	2.8

CO Coverage



COs	CO1	CO2	CO3	CO4	CO5
50	16	16	6	6	6
%	32	32	12	12	12

Student % wise Distribution



Sr No	Assessment Title	Type	Total Marks	Avg Marks	Threshold in %	No of Students Scoring										Total Students Above Threshold
						0-10%	11-20%	21-30%	31-40%	41-50%	51-60%	61-70%	71-80%	81-90%	91-100%	
1	Unit 1/Written Assignment & Presentation	F	10	6.08	50	5	0	0	0	6	10	5	13	3	0	37
2	Unit 2/Written Submission & Qualitative Test	F	10	6.52	50	4	0	0	3	5	3	7	9	11	0	35
3	External Exam	S	30	11.95	50	0	0	0	1	6	7	15	4	2	1	31

Indirect Attainment

Feedback Details	CO wise analysis					
Course Exit Survey-BSW-Sem3-2025-2026 Type: Course Feedback Publish Date: 01/12/2025 Last Date: 04/12/2025 Feedback conduction: Backdated Total Students: 47 Responses Received: 39 Consider for Attainment: <input checked="" type="checkbox"/>	COS and Questions	CO1	CO2	CO3	CO4	CO5
		Q1	Q2	Q3	Q4	Q5
	Students Above Threshold	29/47	32/47	32/47	34/47	31/47
	Students Above Threshold in %	61.7%	68.08%	68.08%	72.34%	65.95%
	Attainment After comparing with attainment Levels	3	3	3	3	3
	Average	3	3	3	3	3

CO Attainment

CO	Direct Attainment	Indirect Attainment	Final Attainment	Target	Gap	Justification
CO1	2.66	3	2.72	2	0.72	-
CO2	3	3	3	2	1	-
CO3	3	3	3	2.66	0.33	-
CO4	3	3	3	2.25	0.75	-
CO5	3	3	3	2.5	0.5	-

Average CO Attainment : 2.94

PO Direct Attainment

POs	PO1	PO2	PO3	PO4	PO5	PO6	PO7	PO8
Weighted Avg	2.5	2.33	3	2	2.5	2.5	2	1

Average CO Attainment : 2.94

POs	PO1	PO2	PO3	PO4	PO5	PO6	PO7	PO8
Calculation	2.5 (2.94) / 3	2.33 (2.94) / 3	3 (2.94) / 3	2 (2.94) / 3	2.5 (2.94) / 3	2.5 (2.94) / 3	2 (2.94) / 3	1 (2.94) / 3
Direct Attainment	2.45	2.28	2.94	1.96	2.45	2.45	1.96	0.98

COURSE OVERVIEW | BSW

COURSE OVERVIEW

BSW | Batch 2024-2027 | SECOND YEAR 2025-2026



Social Entrepreneurship

(VSC 201)

Course Overview

Vision

To contribute to building a new social order based on human dignity and social justice.

Mission

M1: To work with a preferential option for the vulnerable and exploited, both locally and globally.

M2: To build a cadre of young, competent professionals having a global perspective and a strong value base of compassion, personal integrity, moderation, tolerance and self-respect.

Program Outcome (PO)

Sr. No	PO	Competency	PI Number	PI's
1	Graduates will critically analyze social realities, understand their changing dynamics, and actively engage in processes that contribute to positive social transformation.	-	1.1	-
2	They will demonstrate an in-depth understanding of diverse communities, their unique challenges, and systemic inequalities, and advocate for social justice in their professional practice.	-	2.1	-
3	Graduates will apply appropriate social work methods and strategies to effectively work with individuals, groups, and communities, addressing various social issues.	-	3.1	-
4	They will embody professional social work values and ethics, ensuring integrity, respect, and accountability in all aspects of their practice.	-	4.1	-
5	Graduates will develop problem-solving abilities and intervention strategies tailored to the needs of marginalized and vulnerable populations.	-	5.1	-
6	They will integrate research and evidence-based knowledge to design, implement, and evaluate social work interventions effectively.	-	6.1	-
7	Graduates will exhibit strong communication skills and the ability to collaborate with multidisciplinary teams to address social challenges holistically.	-	7.1	-
8	They will demonstrate a commitment to lifelong learning, staying informed about emerging trends and practices in the field of social work.	-	8.1	-

Course Outcomes

- CO1:** Remember the steps for Ideation, Design Thinking and Registration of a Social Enterprise.
- CO2:** Understand the Social Entrepreneurship Ecosystem, Traits & Competencies of a Social Entrepreneur.
- CO3:** Analyze the feasibility of opportunities, business plans, and market research for social enterprises.
- CO4:** Evaluate the Sustainability Strategies for Social Enterprises, including Financial Plans and Resource Linkages.
- CO5:** Apply the Ideation / Design Thinking Process and Innovation to craft and test competitive Lean Canvas and Business Plans.

CO - PO - PSO Mapping

CO / PO / PSO	PO1	PO2	PO3	PO4	PO5	PO6	PO7	PO8	Average
CO1	2	-	-	-	-	2	3	2	2.25
CO2	2	3	-	2	-	-	2	-	2.25
CO3	3	2	-	-	2	3	-	-	2.50
CO4	-	-	-	2	3	3	-	2	2.50
CO5	-	-	3	-	3	2	2	-	2.50
Average	2.33	2.5	3	2	2.66	2.5	2.33	2	

Program Outcome (PO) to PI Mapping

PO	Competency	Indicator	CO1	CO2	CO3	CO4	CO5	Average
PO1			-	-	-	-	-	-
Average			-	-	-	-	-	-

PO	Competency	Indicator	CO1	CO2	CO3	CO4	CO5	Average
PO2			-	-	-	-	-	-
Average			-	-	-	-	-	-

PO	Competency	Indicator	CO1	CO2	CO3	CO4	CO5	Average
PO3			-	-	-	-	-	-
Average			-	-	-	-	-	-

PO	Competency	Indicator	CO1	CO2	CO3	CO4	CO5	Average
PO4			-	-	-	-	-	-
Average			-	-	-	-	-	-

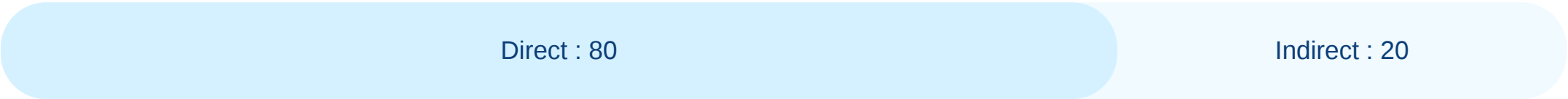
PO	Competency	Indicator	CO1	CO2	CO3	CO4	CO5	Average
PO5			-	-	-	-	-	-
Average			-	-	-	-	-	-

PO	Competency	Indicator	CO1	CO2	CO3	CO4	CO5	Average
PO6			-	-	-	-	-	-
Average			-	-	-	-	-	-

PO	Competency	Indicator	CO1	CO2	CO3	CO4	CO5	Average
PO7			-	-	-	-	-	-
Average			-	-	-	-	-	-

PO	Competency	Indicator	CO1	CO2	CO3	CO4	CO5	Average
PO8			-	-	-	-	-	-
Average			-	-	-	-	-	-

CO Weightages Based on attainment type



CO targets & Attainment Levels

COs	Target	Direct Attainment levels				Indirect Attainment levels			
		Level 0	Level 1	Level 2	Level 3	Level 0	Level 1	Level 2	Level 3
CO1	2.25	0 - 1	2 - 40	41 - 50	51 - 100	0 - 1	2 - 40	41 - 50	51 - 100
CO2	2.25	0 - 1	2 - 40	41 - 50	51 - 100	0 - 1	2 - 40	41 - 50	51 - 100
CO3	2.5	0 - 1	2 - 40	41 - 50	51 - 100	0 - 1	2 - 40	41 - 50	51 - 100
CO4	2.5	0 - 1	2 - 40	41 - 50	51 - 100	0 - 1	2 - 40	41 - 50	51 - 100
CO5	2.5	0 - 1	2 - 40	41 - 50	51 - 100	0 - 1	2 - 40	41 - 50	51 - 100

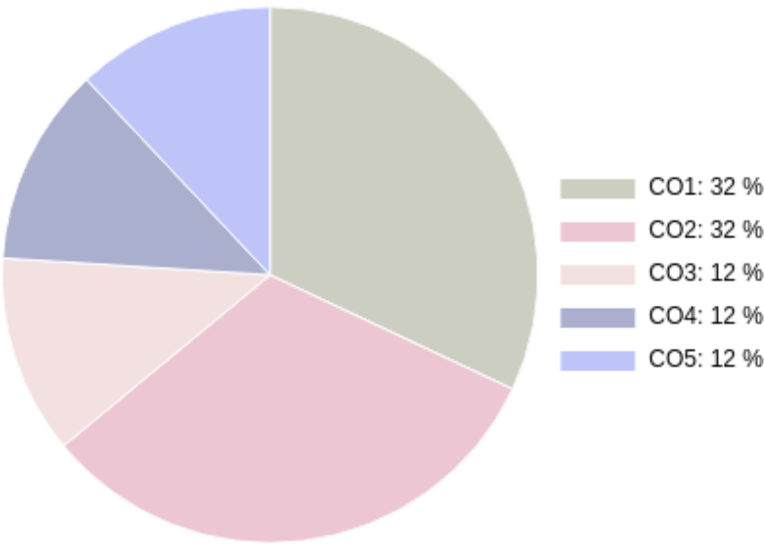
Formative (CIE) Assessments

Sr No	Exam Name	Total Marks	Threshold in %	CO1	CO2	CO3	CO4	CO5	Avg Attainment
1	Unit 1/Quiz	10	50	3	3	3	3	3	3
2	Unit 2/Business Plan	10	50	3	3	3	3	3	3

Summative (SEE) Assessments

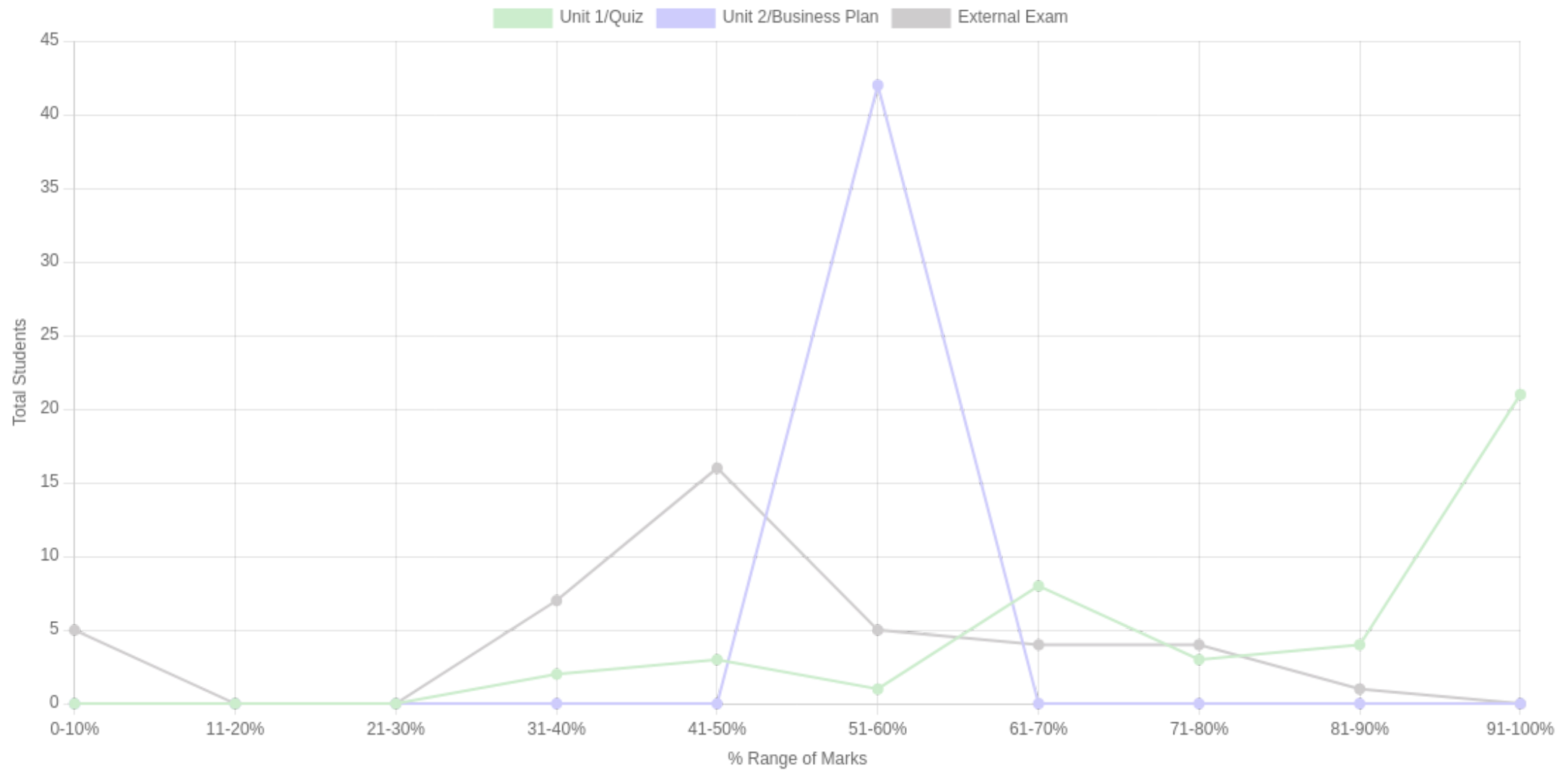
Sr No	Exam Name	Total Marks	Threshold in %	CO1	CO2	CO3	CO4	CO5	Avg Attainment
3	External Exam	30	50	1	2	3	3	3	2.4

CO Coverage



COs	CO1	CO2	CO3	CO4	CO5
50	16	16	6	6	6
%	32	32	12	12	12

Student % wise Distribution



Sr No	Assessment Title	Type	Total Marks	Avg Marks	Threshold in %	No of Students Scoring										Total Students Above Threshold
						0-10%	11-20%	21-30%	31-40%	41-50%	51-60%	61-70%	71-80%	81-90%	91-100%	
1	Unit 1/Quiz	F	10	8.45	50	0	0	0	2	3	1	8	3	4	21	40
2	Unit 2/Business Plan	F	10	6	50	0	0	0	0	0	42	0	0	0	0	42
3	External Exam	S	30	10.11	50	5	0	0	7	16	5	4	4	1	0	20

Indirect Attainment

Feedback Details	CO wise analysis					
Course Exit Survey-BSW-Sem3-2025-2026 Type: Course Feedback Publish Date: 01/12/2025 Last Date: 04/12/2025 Feedback conduction: Backdated Total Students: 47 Responses Received: 39 Consider for Attainment: <input checked="" type="checkbox"/>	COS and Questions	CO1	CO2	CO3	CO4	CO5
		Q1	Q2	Q3	Q4	Q5
	Students Above Threshold	29/47	32/47	32/47	34/47	31/47
	Students Above Threshold in %	61.7%	68.08%	68.08%	72.34%	65.95%
	Attainment After comparing with attainment Levels	3	3	3	3	3
	Average	3	3	3	3	3

CO Attainment

CO	Direct Attainment	Indirect Attainment	Final Attainment	Target	Gap	Justification
CO1	2.33	3	2.46	2.25	0.2	-
CO2	2.66	3	2.72	2.25	0.47	-
CO3	3	3	3	2.5	0.5	-
CO4	3	3	3	2.5	0.5	-
CO5	3	3	3	2.5	0.5	-

Average CO Attainment : 2.83

PO Direct Attainment

POs	PO1	PO2	PO3	PO4	PO5	PO6	PO7	PO8
Weighted Avg	2.33	2.5	3	2	2.66	2.5	2.33	2

Average CO Attainment : 2.83

POs	PO1	PO2	PO3	PO4	PO5	PO6	PO7	PO8
Calculation	2.33 (2.83) / 3	2.5 (2.83) / 3	3 (2.83) / 3	2 (2.83) / 3	2.66 (2.83) / 3	2.5 (2.83) / 3	2.33 (2.83) / 3	2 (2.83) / 3
Direct Attainment	2.20	2.36	2.83	1.89	2.51	2.36	2.20	1.89

COURSE OVERVIEW | BSW

COURSE OVERVIEW

BSW | Batch 2024-2027 | SECOND YEAR 2025-2026



Social Work Practice with Communities

(Major 203)

Course Overview

Vision

To contribute to building a new social order based on human dignity and social justice.

Mission

M1: To work with a preferential option for the vulnerable and exploited, both locally and globally.

M2: To build a cadre of young, competent professionals having a global perspective and a strong value base of compassion, personal integrity, moderation, tolerance and self-respect.

Program Outcome (PO)

Sr. No	PO	Competency	PI Number	PI's
1	Graduates will critically analyze social realities, understand their changing dynamics, and actively engage in processes that contribute to positive social transformation.	-	1.1	-
2	They will demonstrate an in-depth understanding of diverse communities, their unique challenges, and systemic inequalities, and advocate for social justice in their professional practice.	-	2.1	-
3	Graduates will apply appropriate social work methods and strategies to effectively work with individuals, groups, and communities, addressing various social issues.	-	3.1	-
4	They will embody professional social work values and ethics, ensuring integrity, respect, and accountability in all aspects of their practice.	-	4.1	-
5	Graduates will develop problem-solving abilities and intervention strategies tailored to the needs of marginalized and vulnerable populations.	-	5.1	-
6	They will integrate research and evidence-based knowledge to design, implement, and evaluate social work interventions effectively.	-	6.1	-
7	Graduates will exhibit strong communication skills and the ability to collaborate with multidisciplinary teams to address social challenges holistically.	-	7.1	-
8	They will demonstrate a commitment to lifelong learning, staying informed about emerging trends and practices in the field of social work.	-	8.1	-

Course Outcomes

- CO1:** Remember definitions of community, geographical categorizations, and models of community practice.
- CO2:** Understand the evolution of community social work practice in India.
- CO3:** Evaluate the effectiveness of community interventions and empowerment frameworks.
- CO4:** Apply the tools like community mapping and resource mapping to understand and address community needs
- CO5:** Analyze the community dynamics such as intersections of religion, caste, gender, and ableness through mapping tools.

CO - PO - PSO Mapping

CO / PO / PSO	PO1	PO2	PO3	PO4	PO5	PO6	PO7	PO8	Average
CO1	3	2	-	-	-	2	-	1	2.00
CO2	3	2	-	-	-	-	2	1	2.00
CO3	2	-	-	2	2	3	-	-	2.25
CO4	-	-	3	-	3	2	2	-	2.50
CO5	3	2	-	-	2	-	-	1	2.00
Average	2.75	2	3	2	2.33	2.33	2	1	

Program Outcome (PO) to PI Mapping

PO	Competency	Indicator	CO1	CO2	CO3	CO4	CO5	Average
PO1			-	-	-	-	-	-
Average			-	-	-	-	-	-

PO	Competency	Indicator	CO1	CO2	CO3	CO4	CO5	Average
PO2			-	-	-	-	-	-
Average			-	-	-	-	-	-

PO	Competency	Indicator	CO1	CO2	CO3	CO4	CO5	Average
PO3			-	-	-	-	-	-
Average			-	-	-	-	-	-

PO	Competency	Indicator	CO1	CO2	CO3	CO4	CO5	Average
PO4			-	-	-	-	-	-
Average			-	-	-	-	-	-

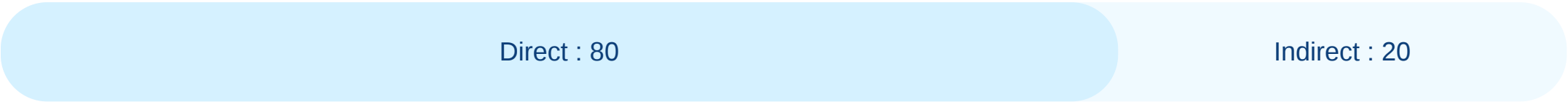
PO	Competency	Indicator	CO1	CO2	CO3	CO4	CO5	Average
PO5			-	-	-	-	-	-
Average			-	-	-	-	-	-

PO	Competency	Indicator	CO1	CO2	CO3	CO4	CO5	Average
PO6			-	-	-	-	-	-
Average			-	-	-	-	-	-

PO	Competency	Indicator	CO1	CO2	CO3	CO4	CO5	Average
PO7			-	-	-	-	-	-
Average			-	-	-	-	-	-

PO	Competency	Indicator	CO1	CO2	CO3	CO4	CO5	Average
PO8			-	-	-	-	-	-
Average			-	-	-	-	-	-

CO Weightages Based on attainment type



CO targets & Attainment Levels

COs	Target	Direct Attainment levels				Indirect Attainment levels			
		Level 0	Level 1	Level 2	Level 3	Level 0	Level 1	Level 2	Level 3
CO1	2	0 - 1	2 - 40	41 - 50	51 - 100	0 - 1	2 - 40	41 - 50	51 - 100
CO2	2	0 - 1	2 - 40	41 - 50	51 - 100	0 - 1	2 - 40	41 - 50	51 - 100
CO3	2.25	0 - 1	2 - 40	41 - 50	51 - 100	0 - 1	2 - 40	41 - 50	51 - 100
CO4	2.5	0 - 1	2 - 40	41 - 50	51 - 100	0 - 1	2 - 40	41 - 50	51 - 100
CO5	2	0 - 1	2 - 40	41 - 50	51 - 100	0 - 1	2 - 40	41 - 50	51 - 100

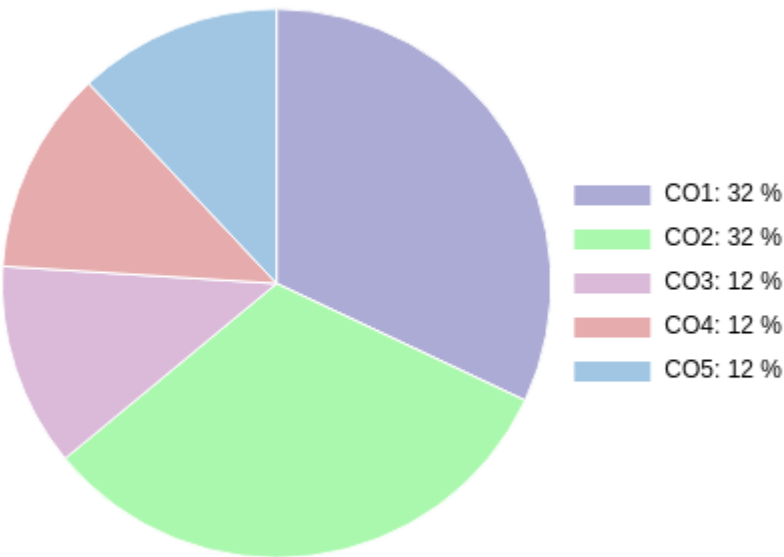
Formative (CIE) Assessments

Sr No	Exam Name	Total Marks	Threshold in %	CO1	CO2	CO3	CO4	CO5	Avg Attainment
1	Unit 2	10	50	3	3	3	3	3	3
2	Unit 1	10	50	3	3	3	3	3	3

Summative (SEE) Assessments

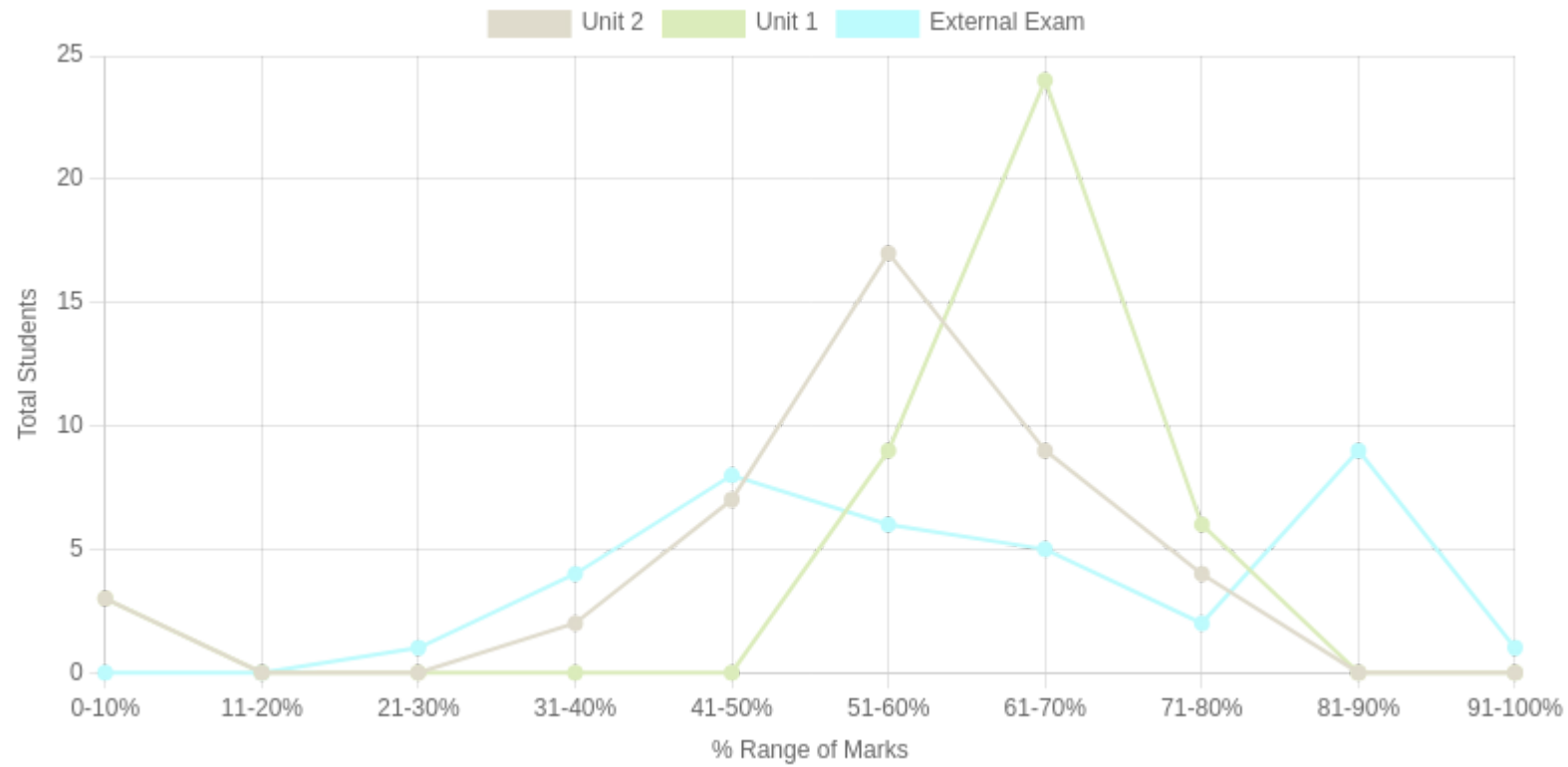
Sr No	Exam Name	Total Marks	Threshold in %	CO1	CO2	CO3	CO4	CO5	Avg Attainment
3	External Exam	30	50	1	1	3	3	3	2.2

CO Coverage



COs	CO1	CO2	CO3	CO4	CO5
50	16	16	6	6	6
%	32	32	12	12	12

Student % wise Distribution



Sr No	Assessment Title	Type	Total Marks	Avg Marks	Threshold in %	No of Students Scoring										Total Students Above Threshold
						0-10%	11-20%	21-30%	31-40%	41-50%	51-60%	61-70%	71-80%	81-90%	91-100%	
1	Unit 2	F	10	5.71	50	3	0	0	2	7	17	9	4	0	0	37
2	Unit 1	F	10	6.42	50	3	0	0	0	0	9	24	6	0	0	39
3	External Exam	S	30	10.47	50	0	0	1	4	8	6	5	2	9	1	26

Indirect Attainment

Feedback Details	CO wise analysis					
Course Exit Survey-BSW-Sem3-2025-2026 Type: Course Feedback Publish Date: 01/12/2025 Last Date: 04/12/2025 Feedback conduction: Backdated Total Students: 47 Responses Received: 39 Consider for Attainment: <input checked="" type="checkbox"/>	COS and Questions	CO1	CO2	CO3	CO4	CO5
		Q1	Q2	Q3	Q4	Q5
	Students Above Threshold	29/47	32/47	32/47	34/47	31/47
	Students Above Threshold in %	61.7%	68.08%	68.08%	72.34%	65.95%
	Attainment After comparing with attainment Levels	3	3	3	3	3
	Average	3	3	3	3	3

CO Attainment

CO	Direct Attainment	Indirect Attainment	Final Attainment	Target	Gap	Justification
CO1	2.33	3	2.46	2	0.46	-
CO2	2.33	3	2.46	2	0.46	-
CO3	3	3	3	2.25	0.75	-
CO4	3	3	3	2.5	0.5	-
CO5	3	3	3	2	1	-

Average CO Attainment : 2.78

PO Direct Attainment

POs	PO1	PO2	PO3	PO4	PO5	PO6	PO7	PO8
Weighted Avg	2.75	2	3	2	2.33	2.33	2	1

Average CO Attainment : 2.78

POs	PO1	PO2	PO3	PO4	PO5	PO6	PO7	PO8
Calculation	2.75 (2.78) / 3	2 (2.78) / 3	3 (2.78) / 3	2 (2.78) / 3	2.33 (2.78) / 3	2.33 (2.78) / 3	2 (2.78) / 3	1 (2.78) / 3
Direct Attainment	2.55	1.85	2.78	1.85	2.16	2.16	1.85	0.93

COURSE OVERVIEW | BSW

COURSE OVERVIEW

BSW | Batch 2024-2027 | SECOND YEAR 2025-2026



Social Work Practice with Groups

(Major 201)

Course Overview

Vision

To contribute to building a new social order based on human dignity and social justice.

Mission

M1: To work with a preferential option for the vulnerable and exploited, both locally and globally.

M2: To build a cadre of young, competent professionals having a global perspective and a strong value base of compassion, personal integrity, moderation, tolerance and self-respect.

Program Outcome (PO)

Sr. No	PO	Competency	PI Number	PI's
1	Graduates will critically analyze social realities, understand their changing dynamics, and actively engage in processes that contribute to positive social transformation.	-	1.1	-
2	They will demonstrate an in-depth understanding of diverse communities, their unique challenges, and systemic inequalities, and advocate for social justice in their professional practice.	-	2.1	-
3	Graduates will apply appropriate social work methods and strategies to effectively work with individuals, groups, and communities, addressing various social issues.	-	3.1	-
4	They will embody professional social work values and ethics, ensuring integrity, respect, and accountability in all aspects of their practice.	-	4.1	-
5	Graduates will develop problem-solving abilities and intervention strategies tailored to the needs of marginalized and vulnerable populations.	-	5.1	-
6	They will integrate research and evidence-based knowledge to design, implement, and evaluate social work interventions effectively.	-	6.1	-
7	Graduates will exhibit strong communication skills and the ability to collaborate with multidisciplinary teams to address social challenges holistically.	-	7.1	-
8	They will demonstrate a commitment to lifelong learning, staying informed about emerging trends and practices in the field of social work.	-	8.1	-

Course Outcomes

- CO1:** Understanding group dynamics, communication patterns, and leadership styles.
- CO2:** Applying rapport-building techniques and creating session plans for group work.
- CO3:** Evaluating the effectiveness of group work interventions and decision-making processes.
- CO4:** Creating facilitation strategies, session plans, and interventions tailored to group needs.
- CO5:** Analyzing interaction patterns and group dynamics.

CO - PO - PSO Mapping

CO / PO / PSO	PO1	PO2	PO3	PO4	PO5	PO6	PO7	PO8	Average
CO1	2	-	-	2	-	-	3	2	2.25
CO2	-	-	3	-	2	-	3	2	2.50
CO3	2	-	-	3	2	3	-	-	2.50
CO4	-	-	3	-	2	3	2	-	2.50
CO5	2	-	-	2	-	3	-	2	2.25
Average	2	-	3	2.33	2	3	2.66	2	

Program Outcome (PO) to PI Mapping

PO	Competency	Indicator	CO1	CO2	CO3	CO4	CO5	Average
PO1			-	-	-	-	-	-
Average			-	-	-	-	-	-

PO	Competency	Indicator	CO1	CO2	CO3	CO4	CO5	Average
PO2			-	-	-	-	-	-
Average			-	-	-	-	-	-

PO	Competency	Indicator	CO1	CO2	CO3	CO4	CO5	Average
PO3			-	-	-	-	-	-
Average			-	-	-	-	-	-

PO	Competency	Indicator	CO1	CO2	CO3	CO4	CO5	Average
PO4			-	-	-	-	-	-
Average			-	-	-	-	-	-

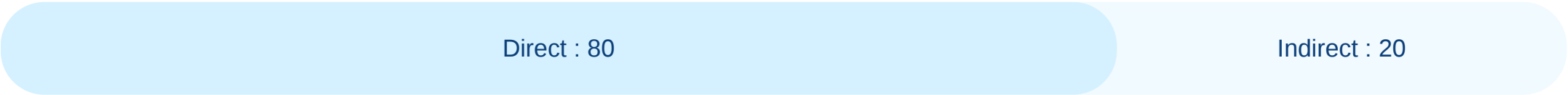
PO	Competency	Indicator	CO1	CO2	CO3	CO4	CO5	Average
PO5			-	-	-	-	-	-
Average			-	-	-	-	-	-

PO	Competency	Indicator	CO1	CO2	CO3	CO4	CO5	Average
PO6			-	-	-	-	-	-
Average			-	-	-	-	-	-

PO	Competency	Indicator	CO1	CO2	CO3	CO4	CO5	Average
PO7			-	-	-	-	-	-
Average			-	-	-	-	-	-

PO	Competency	Indicator	CO1	CO2	CO3	CO4	CO5	Average
PO8			-	-	-	-	-	-
Average			-	-	-	-	-	-

CO Weightages Based on attainment type



CO targets & Attainment Levels

COs	Target	Direct Attainment levels				Indirect Attainment levels			
		Level 0	Level 1	Level 2	Level 3	Level 0	Level 1	Level 2	Level 3
CO1	2.25	0 - 1	2 - 40	41 - 50	51 - 100	0 - 1	2 - 40	41 - 50	51 - 100
CO2	2.5	0 - 1	2 - 40	41 - 50	51 - 100	0 - 1	2 - 40	41 - 50	51 - 100
CO3	2.5	0 - 1	2 - 40	41 - 50	51 - 100	0 - 1	2 - 40	41 - 50	51 - 100
CO4	2.5	0 - 1	2 - 40	41 - 50	51 - 100	0 - 1	2 - 40	41 - 50	51 - 100
CO5	2.25	0 - 1	2 - 40	41 - 50	51 - 100	0 - 1	2 - 40	41 - 50	51 - 100

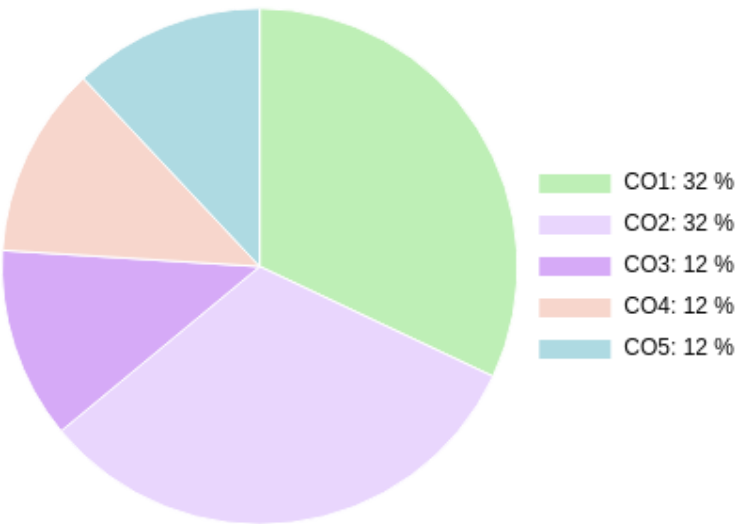
Formative (CIE) Assessments

Sr No	Exam Name	Total Marks	Threshold in %	CO1	CO2	CO3	CO4	CO5	Avg Attainment
1	Unit 2/Test	7	50	3	3	3	3	3	3
2	Assignment	10	50	3	3	3	3	3	3
3	Unit 1/Test	3	50	3	3	3	3	3	3

Summative (SEE) Assessments

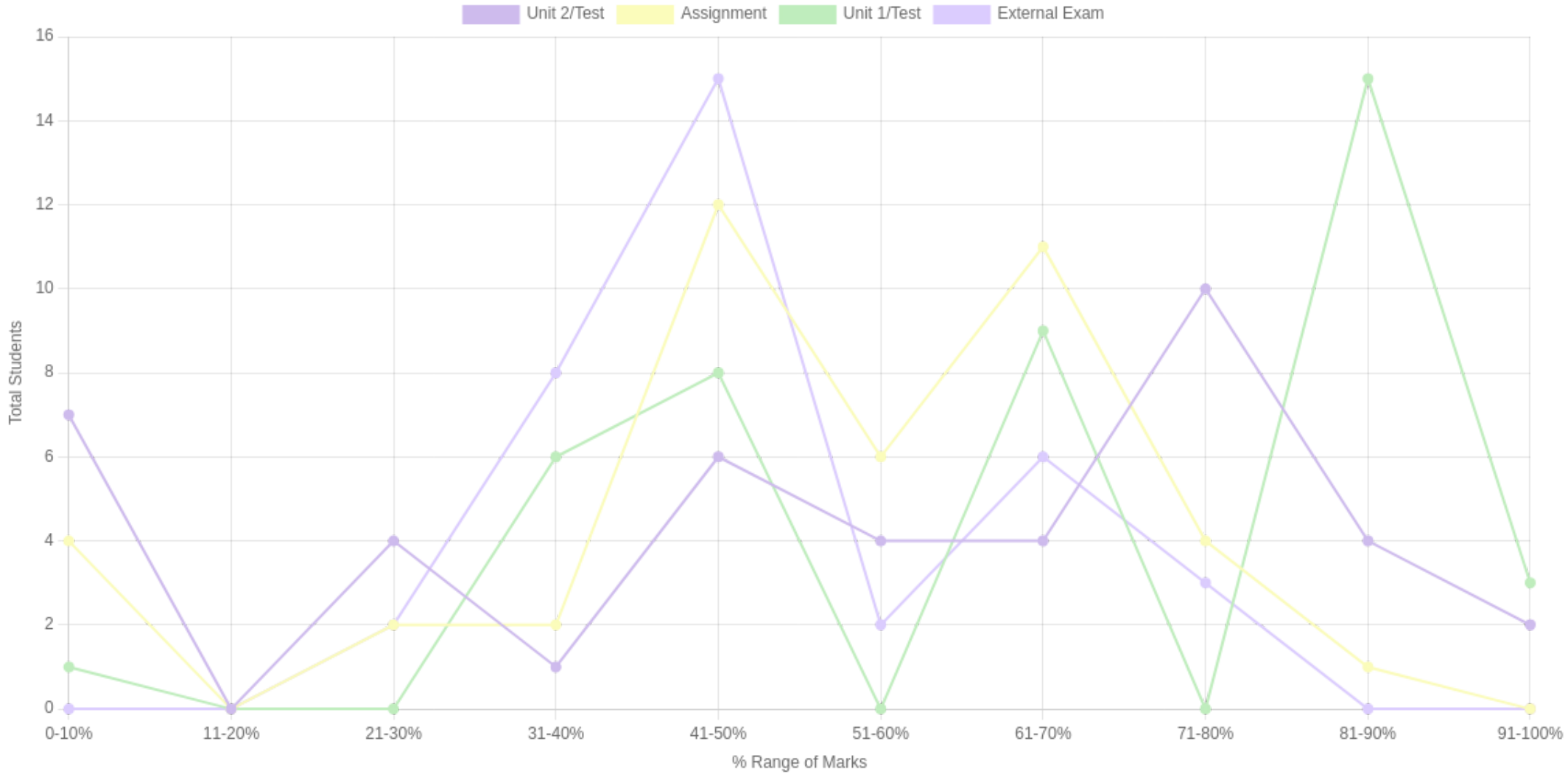
Sr No	Exam Name	Total Marks	Threshold in %	CO1	CO2	CO3	CO4	CO5	Avg Attainment
4	External Exam	30	50	1	1	3	3	3	2.2

CO Coverage



COs	CO1	CO2	CO3	CO4	CO5
50	16	16	6	6	6
%	32	32	12	12	12

Student % wise Distribution



Sr No	Assessment Title	Type	Total Marks	Avg Marks	Threshold in %	No of Students Scoring										Total Students Above Threshold
						0-10%	11-20%	21-30%	31-40%	41-50%	51-60%	61-70%	71-80%	81-90%	91-100%	
1	Unit 2/Test	F	7	3.67	50	7	0	4	1	6	4	4	10	4	2	27
2	Assignment	F	10	5.23	50	4	0	2	2	12	6	11	4	1	0	32
3	Unit 1/Test	F	3	1.96	50	1	0	0	6	8	0	9	0	15	3	35
4	External Exam	S	30	8.79	50	0	0	2	8	15	2	6	3	0	0	20

Indirect Attainment

Feedback Details	CO wise analysis					
Course Exit Survey-BSW-Sem3-2025-2026 Type: Course Feedback Publish Date: 01/12/2025 Last Date: 04/12/2025 Feedback conduction: Backdated Total Students: 47 Responses Received: 39 Consider for Attainment: <input checked="" type="checkbox"/>	COS and Questions	CO1	CO2	CO3	CO4	CO5
		Q1	Q2	Q3	Q4	Q5
	Students Above Threshold	29/47	32/47	32/47	34/47	31/47
	Students Above Threshold in %	61.7%	68.08%	68.08%	72.34%	65.95%
	Attainment After comparing with attainment Levels	3	3	3	3	3
	Average	3	3	3	3	3

CO Attainment

CO	Direct Attainment	Indirect Attainment	Final Attainment	Target	Gap	Justification
CO1	2.5	3	2.6	2.25	0.35	-
CO2	2.5	3	2.6	2.5	0.1	-
CO3	3	3	3	2.5	0.5	-
CO4	3	3	3	2.5	0.5	-
CO5	3	3	3	2.25	0.75	-

Average CO Attainment : 2.84

PO Direct Attainment

POs	PO1	PO2	PO3	PO4	PO5	PO6	PO7	PO8
Weighted Avg	2	-	3	2.33	2	3	2.66	2

Average CO Attainment : 2.84

POs	PO1	PO2	PO3	PO4	PO5	PO6	PO7	PO8
Calculation	2 (2.84) / 3	0 (2.84) / 3	3 (2.84) / 3	2.33 (2.84) / 3	2 (2.84) / 3	3 (2.84) / 3	2.66 (2.84) / 3	2 (2.84) / 3
Direct Attainment	1.89	0.00	2.84	2.21	1.89	2.84	2.52	1.89

COURSE OVERVIEW | BSW

COURSE OVERVIEW

BSW | Batch 2024-2027 | SECOND YEAR 2025-2026



Theatre Skills

(CC 201)

Course Overview

Vision

To contribute to building a new social order based on human dignity and social justice.

Mission

M1: To work with a preferential option for the vulnerable and exploited, both locally and globally.

M2: To build a cadre of young, competent professionals having a global perspective and a strong value base of compassion, personal integrity, moderation, tolerance and self-respect.

Program Outcome (PO)

Sr. No	PO	Competency	PI Number	PI's
1	Graduates will critically analyze social realities, understand their changing dynamics, and actively engage in processes that contribute to positive social transformation.	-	1.1	-
2	They will demonstrate an in-depth understanding of diverse communities, their unique challenges, and systemic inequalities, and advocate for social justice in their professional practice.	-	2.1	-
3	Graduates will apply appropriate social work methods and strategies to effectively work with individuals, groups, and communities, addressing various social issues.	-	3.1	-
4	They will embody professional social work values and ethics, ensuring integrity, respect, and accountability in all aspects of their practice.	-	4.1	-
5	Graduates will develop problem-solving abilities and intervention strategies tailored to the needs of marginalized and vulnerable populations.	-	5.1	-
6	They will integrate research and evidence-based knowledge to design, implement, and evaluate social work interventions effectively.	-	6.1	-
7	Graduates will exhibit strong communication skills and the ability to collaborate with multidisciplinary teams to address social challenges holistically.	-	7.1	-
8	They will demonstrate a commitment to lifelong learning, staying informed about emerging trends and practices in the field of social work.	-	8.1	-

Course Outcomes

CO1: Remember the contributions of key figures like Bertolt Brecht and Dario Fo in people's theatre.

CO2: Understand the role of theatre as a medium for social change and its ethical considerations.

CO3: Analyze the different theatre practices, including street plays and folk traditions, for their impact on communities.

CO4: Evaluate the effectiveness of theatre practices in addressing social issues and engaging audiences.

CO5: Apply the acting, improvisation, scriptwriting, and direction techniques to create impactful performances.

CO - PO - PSO Mapping

CO / PO / PSO	PO1	PO2	PO3	PO4	PO5	PO6	PO7	PO8	Average
CO1	3	2	-	-	-	2	1	-	2.00
CO2	2	3	-	2	-	-	2	1	2.00
CO3	3	2	-	-	-	3	-	1	2.25
CO4	2	3	-	-	2	2	-	1	2.00
CO5	-	-	3	2	3	-	2	-	2.50
Average	2.5	2.5	3	2	2.5	2.33	1.66	1	

Program Outcome (PO) to PI Mapping

PO	Competency	Indicator	CO1	CO2	CO3	CO4	CO5	Average
PO1			-	-	-	-	-	-
Average			-	-	-	-	-	-

PO	Competency	Indicator	CO1	CO2	CO3	CO4	CO5	Average
PO2			-	-	-	-	-	-
Average			-	-	-	-	-	-

PO	Competency	Indicator	CO1	CO2	CO3	CO4	CO5	Average
PO3			-	-	-	-	-	-
Average			-	-	-	-	-	-

PO	Competency	Indicator	CO1	CO2	CO3	CO4	CO5	Average
PO4			-	-	-	-	-	-
Average			-	-	-	-	-	-

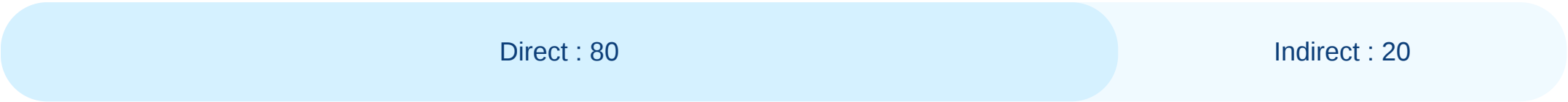
PO	Competency	Indicator	CO1	CO2	CO3	CO4	CO5	Average
PO5			-	-	-	-	-	-
Average			-	-	-	-	-	-

PO	Competency	Indicator	CO1	CO2	CO3	CO4	CO5	Average
PO6			-	-	-	-	-	-
Average			-	-	-	-	-	-

PO	Competency	Indicator	CO1	CO2	CO3	CO4	CO5	Average
PO7			-	-	-	-	-	-
Average			-	-	-	-	-	-

PO	Competency	Indicator	CO1	CO2	CO3	CO4	CO5	Average
PO8			-	-	-	-	-	-
Average			-	-	-	-	-	-

CO Weightages Based on attainment type



CO targets & Attainment Levels

COs	Target	Direct Attainment levels				Indirect Attainment levels			
		Level 0	Level 1	Level 2	Level 3	Level 0	Level 1	Level 2	Level 3
CO1	2	0 - 1	2 - 40	41 - 50	51 - 100	0 - 1	2 - 40	41 - 50	51 - 100
CO2	2	0 - 1	2 - 40	41 - 50	51 - 100	0 - 1	2 - 40	41 - 50	51 - 100
CO3	2.25	0 - 1	2 - 40	41 - 50	51 - 100	0 - 1	2 - 40	41 - 50	51 - 100
CO4	2	0 - 1	2 - 40	41 - 50	51 - 100	0 - 1	2 - 40	41 - 50	51 - 100
CO5	2.5	0 - 1	2 - 40	41 - 50	51 - 100	0 - 1	2 - 40	41 - 50	51 - 100

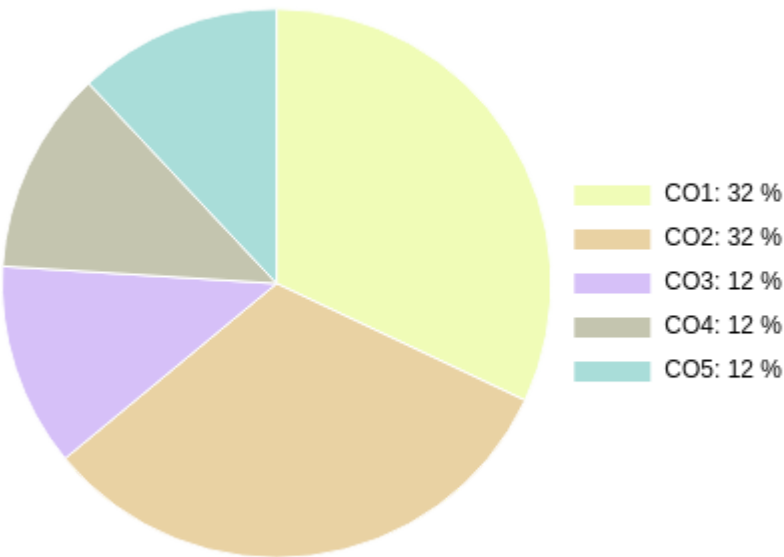
Formative (CIE) Assessments

Sr No	Exam Name	Total Marks	Threshold in %	CO1	CO2	CO3	CO4	CO5	Avg Attainment
1	Unit 1/MCQ	10	50	3	3	3	3	3	3
2	Unit 2/Performance & Reflection Writing	10	50	3	3	3	3	3	3

Summative (SEE) Assessments

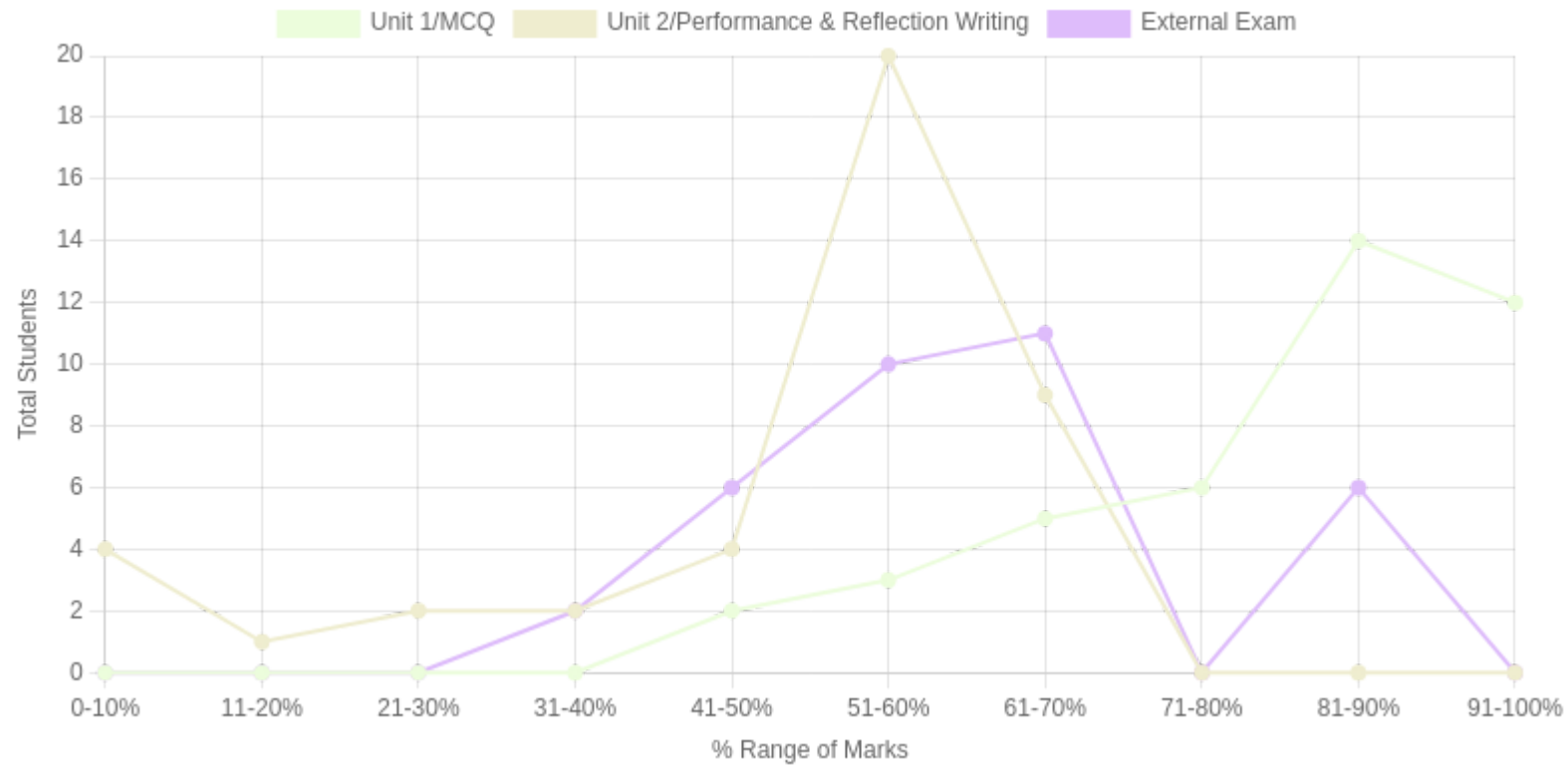
Sr No	Exam Name	Total Marks	Threshold in %	CO1	CO2	CO3	CO4	CO5	Avg Attainment
3	External Exam	30	50	2	3	3	3	3	2.8

CO Coverage



COs	CO1	CO2	CO3	CO4	CO5
50	16	16	6	6	6
%	32	32	12	12	12

Student % wise Distribution



Sr No	Assessment Title	Type	Total Marks	Avg Marks	Threshold in %	No of Students Scoring										Total Students Above Threshold
						0-10%	11-20%	21-30%	31-40%	41-50%	51-60%	61-70%	71-80%	81-90%	91-100%	
1	Unit 1/MCQ	F	10	8.5	50	0	0	0	0	2	3	5	6	14	12	42
2	Unit 2/Performance & Reflection Writing	F	10	5.21	50	4	1	2	2	4	20	9	0	0	0	33
3	External Exam	S	30	12.94	50	0	0	0	2	6	10	11	0	6	0	31

Indirect Attainment

Feedback Details	CO wise analysis					
Course Exit Survey-BSW-Sem3-2025-2026 Type: Course Feedback Publish Date: 01/12/2025 Last Date: 04/12/2025 Feedback conduction: Backdated Total Students: 47 Responses Received: 39 Consider for Attainment: <input checked="" type="checkbox"/>	COS and Questions	CO1	CO2	CO3	CO4	CO5
		Q1	Q2	Q3	Q4	Q5
	Students Above Threshold	29/47	32/47	32/47	34/47	31/47
	Students Above Threshold in %	61.7%	68.08%	68.08%	72.34%	65.95%
	Attainment After comparing with attainment Levels	3	3	3	3	3
	Average	3	3	3	3	3

CO Attainment

CO	Direct Attainment	Indirect Attainment	Final Attainment	Target	Gap	Justification
CO1	2.66	3	2.72	2	0.72	-
CO2	3	3	3	2	1	-
CO3	3	3	3	2.25	0.75	-
CO4	3	3	3	2	1	-
CO5	3	3	3	2.5	0.5	-

Average CO Attainment : 2.94

PO Direct Attainment

POs	PO1	PO2	PO3	PO4	PO5	PO6	PO7	PO8
Weighted Avg	2.5	2.5	3	2	2.5	2.33	1.66	1

Average CO Attainment : 2.94

POs	PO1	PO2	PO3	PO4	PO5	PO6	PO7	PO8
Calculation	2.5 (2.94) / 3	2.5 (2.94) / 3	3 (2.94) / 3	2 (2.94) / 3	2.5 (2.94) / 3	2.33 (2.94) / 3	1.66 (2.94) / 3	1 (2.94) / 3
Direct Attainment	2.45	2.45	2.94	1.96	2.45	2.28	1.63	0.98

COURSE OVERVIEW | BSW

Course Exit Survey – Dashboard Summary

Program: BSW

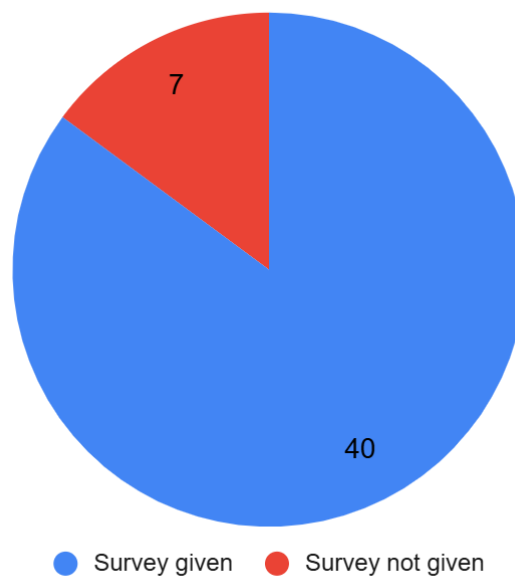
Semester and Year: Sem 3 AY 2025-2026

Course Code: Minor 201Timestampstamp

Course Name: Contemporary Development Studies

Response Analysis

Total Students: 47



A total of 40 students responded. The feedback reflects strong analytical understanding, good application of development tools and policies, and moderate scope for strengthening policy evaluation and implementation frameworks.

Questions

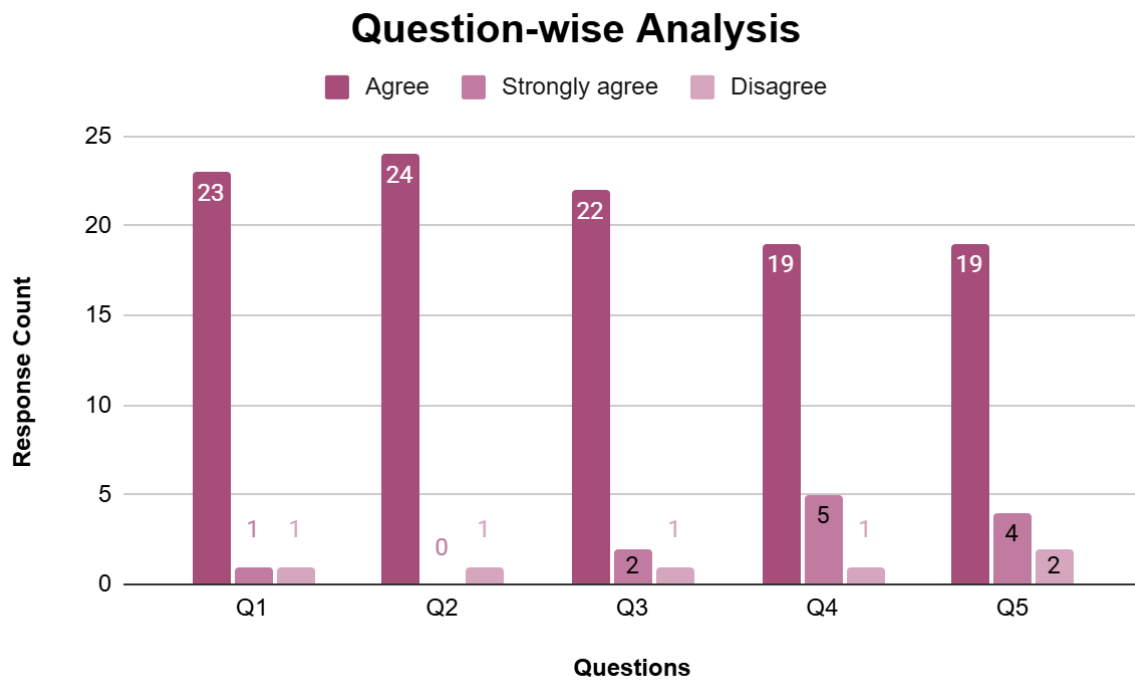
Q1: I was able to analyze approaches to development, contemporary development concern, and measurement tool of human development.

Q2: I was able to apply the measurement tool of human development and government policies in the field.

Q3: I was able to analyse the contemporary development issues.

Q4: I was able to evaluate policies based on policy development framework and strategies to effectively implement the policies.

Outcome Code	Learning Outcome Focus	Strongly Agree (%)	Agree (%)	Disagree (%)	Positive (%)
Q1	Analyse development approaches & HD measurement	20%	70%	10%	90%
Q2	Apply HD tools & govt policies	25%	65%	10%	90%
Q3	Analyse contemporary development issues	7.5%	85%	7.5%	92.5%
Q4	Evaluate policies & implementation strategies	12.5%	75%	12.5%	87.5%



◆ Q1 — Analyzing Development Approaches, Concerns & Human Development Measurement

Positive Responses (SA + A): 90%

- Students demonstrate strong analytical understanding of development approaches and human development indices.
- 10% disagreement suggests some learners need clearer conceptual linkages between theory and measurement tools.

◆ Q2 — Applying Human Development Measurement Tools & Government Policies

Positive Responses: 90%

- Students are largely confident in applying HDI tools and policy frameworks in field contexts.
- 10% disagreement indicates scope for more practical, field-based exposure.

◆ Q3 — Analysing Contemporary Development Issues

Positive Responses: 92.5%

- Strong performance in identifying and analysing current development challenges.
 - Lowest disagreement (7.5%), showing good critical awareness of contemporary issues.
-

◆ Q4 — Evaluating Policies Using Development Frameworks & Implementation Strategies

Positive Responses: 87.5%

- Students demonstrate good evaluative ability regarding policy frameworks and implementation strategies.
- Highest disagreement (12.5%), indicating the need to strengthen policy evaluation skills and implementation logic.

✦ Key Insights (Executive Summary)

- ✓ Students show strong analytical capacity in understanding development theories and issues (Q1 & Q3).
- ✓ Application of tools and policies (Q2) is good, but can be strengthened with more hands-on policy exercises.
- ✓ Policy evaluation and implementation (Q4) is the weakest outcome, requiring deeper engagement with real policy case studies.
- ✓ Overall learning attainment remains high, with 87%–93% positive responses across all outcomes.

✦ Overall Dashboard Conclusion

The course demonstrates strong effectiveness in building analytical and applied understanding of development and policy studies. With nearly 90% positive

attainment across all outcomes, students are well-prepared, with targeted improvements needed in policy evaluation and implementation.

Course Exit Survey – Dashboard Summary

Program: BSW

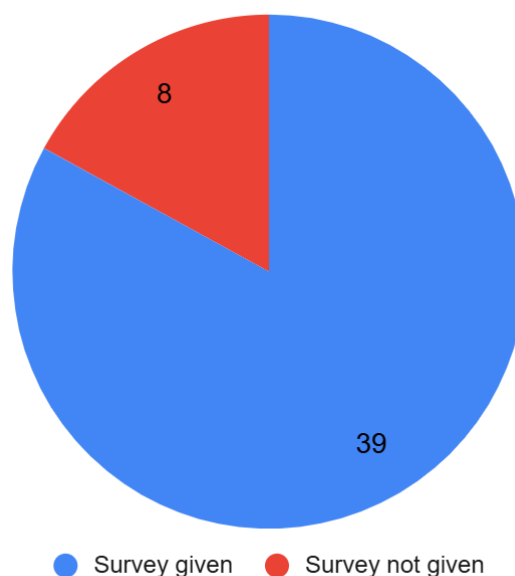
Semester and Year: Sem 3 AY 2025-2026

Course Code: FP 201eTimestampstamp

Course Name: Participatory Rural Appraisal

Response Analysis

Total Students: 47



A total of **39 students** responded. Overall feedback reflects **strong conceptual clarity**, very good analytical understanding of rural realities, and **high confidence in applying PRA tools**, with minor scope for strengthening evaluation-oriented learning.

Questions

Q1: I was able to remember the definitions, principles, and historical evolution of PRA and related participatory methods.

Q2: I was able to understand the contextual relevance of participatory approaches in social work and rural settings.

Q3: I was able to analyze the rural realities and challenges through mapping exercises like Transect Walk and Resource Mapping.

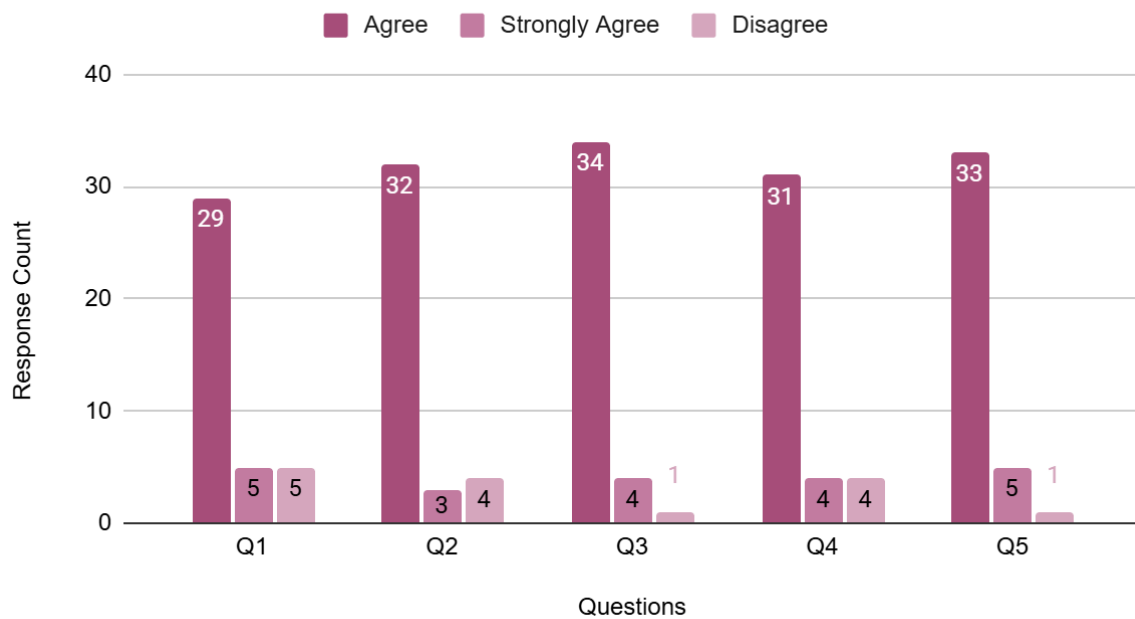
Q4: I was able to evaluate the effectiveness of PRA tools and methodologies in addressing rural challenges.

Q5: I was able to apply the PRA tools to engage with communities, gather data, and facilitate participatory decision-making.

Outcome Code	Learning Outcome Focus	Strongly Agree (%)	Agree (%)	Disagree (%)	Positive (%)
Q1	Definitions, principles & evolution of PRA	12.8%	74.4%	12.8%	87.2%
Q2	Contextual relevance of participatory approaches	7.7%	82.1%	10.3%	89.7%
Q3	Analysis using PRA mapping tools	10.3%	87.2%	2.6%	97.4%

Q4	Evaluation of PRA tools & methodologies	10.3%	79.5%	10.3%	89.7%
Q5	Application of PRA tools in community engagement	12.8%	84.6%	2.6%	97.4%

Question-wise Analysis



◆ Q1 — Understanding Definitions, Principles & Evolution of PRA

Positive Responses (SA + A): 87.2%

- Students demonstrate good recall of PRA concepts and historical evolution.
- **12.8% disagreement** suggests a need for reinforcing theoretical foundations and historical context.

◆ Q2 — Understanding Contextual Relevance of Participatory Approaches

Positive Responses: 89.7%

- Students understand how participatory approaches fit social work and rural settings.
 - Moderate disagreement (10.3%) indicates scope for more context-based illustrations.
-

◆ Q3 — Analysing Rural Realities through PRA Mapping Tools

Positive Responses: 97.4%

- Very strong analytical skill in using tools like Transect Walk and Resource Mapping.
 - One of the **best-performing outcomes**, reflecting effective experiential learning.
-

◆ Q4 — Evaluating Effectiveness of PRA Tools & Methodologies

Positive Responses: 89.7%

- Students are able to evaluate PRA tools in addressing rural challenges.
 - Indicates good evaluative capacity with room for deeper critical comparison across tools.
-

◆ Q5 — Applying PRA Tools for Community Engagement & Decision-Making

Positive Responses: 97.4%

- Students are highly confident in applying PRA tools in real community settings.
- Reflects strong hands-on exposure and participatory learning effectiveness.

✦ Key Insights (Executive Summary)

- ✓ **Very strong experiential learning outcomes** in PRA application and mapping exercises (Q3 & Q5).

- ✓ Students demonstrate good understanding of **contextual relevance and evaluation** of participatory approaches (Q2 & Q4).
- ✓ **Conceptual foundations (Q1)** show comparatively higher disagreement, indicating the need for reinforcement of definitions and historical evolution.
- ✓ Overall outcome attainment ranges from **87% to 97%**, indicating high course effectiveness.

Overall Dashboard Conclusion

The course demonstrates **high effectiveness** in building participatory skills, rural analysis capability, and community engagement competence. With **87%–97% positive responses across outcomes**, students are well-prepared to use PRA tools effectively in real-world social work and rural development contexts.

Course Exit Survey – Dashboard Summary

Program: BSW

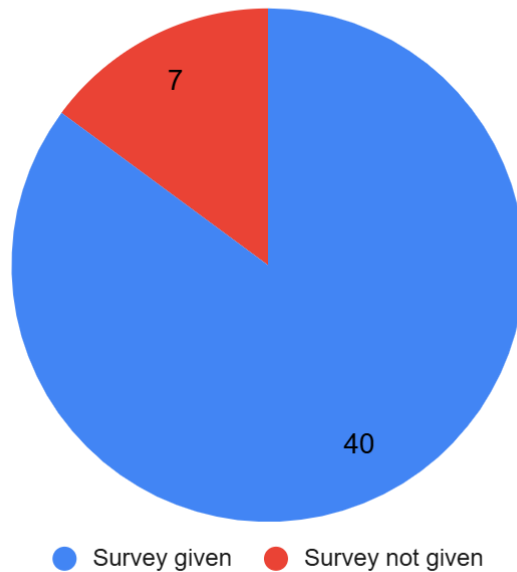
Semester and Year: Sem 3 AY 2025-2026

Course Code: VSC 201

Course Name: Social Entrepreneurship

Response Analysis

Total Students: 47



A total of **40 students** responded. The feedback reflects **strong foundational understanding**, good analytical ability in feasibility and planning, and **very good awareness of sustainability strategies** for social enterprises.

Questions

Q1: I was able to remember the steps for Ideation, Design Thinking and Registration of a Social Enterpriser.

Q2: I was able to understand the Social Entrepreneurship Ecosystem, Traits & Competencies of a Social Entrepreneur.

Q3: I was able to analyze the feasibility of opportunities, business plans, and market research for social enterprises.

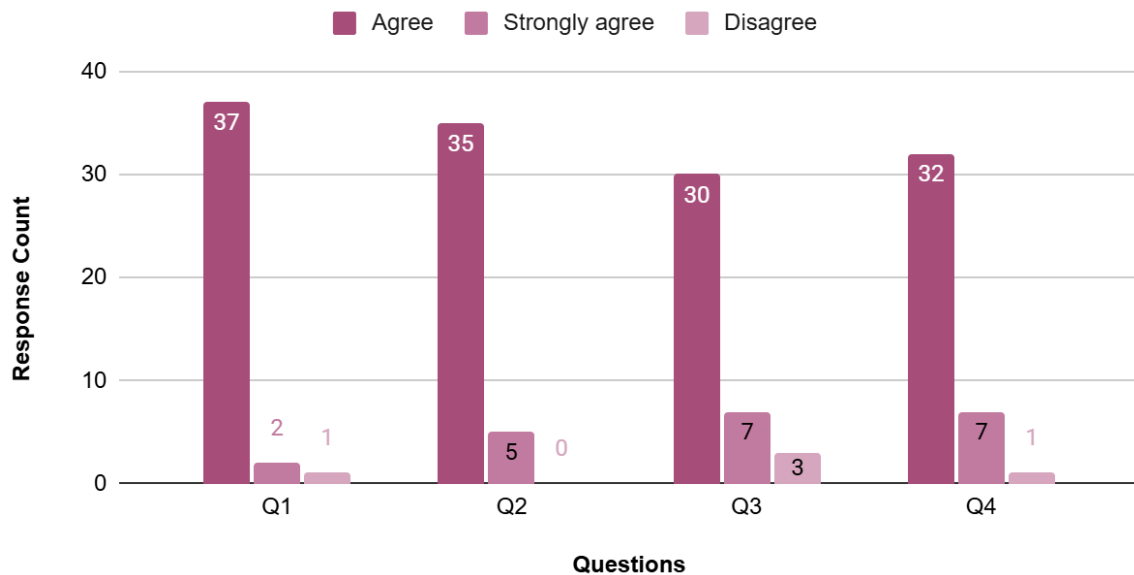
Q4: I was able to evaluate the Sustainability Strategies for Social Enterprises, including Financial Plans and Resource Linkages.

Outcome Code	Learning Outcome Focus	Strongly Agree (%)	Agree (%)	Disagree (%)	Positive (%)
Q1	Ideation, design thinking & registration steps	5%	92.5%	2.5%	97.5%

Q2	Social entrepreneurship ecosystem & traits	12.5%	87.5%	0%	100%
Q3	Feasibility, business plans & market research	17.5%	75%	7.5%	92.5%
Q4	Sustainability strategies & financial planning	17.5%	80%	2.5%	97.5%

Question-wise Analysis

Total Students: 47



◆ Q1 — Remembering Steps of Ideation, Design Thinking & Registration

Positive Responses (SA + A): 97.5%

- Students clearly recall the procedural steps involved in setting up a social enterprise.
- **Very minimal disagreement (2.5%)**, indicating strong foundational clarity.

◆ Q2 — Understanding Social Entrepreneurship Ecosystem, Traits & Competencies

Positive Responses: 100%

- All students demonstrated a clear understanding of the ecosystem and characteristics of social entrepreneurs.
 - **Strongest outcome**, showing excellent conceptual delivery.
-

◆ Q3 — Analyzing Feasibility, Business Plans & Market Research

Positive Responses: 92.5%

- Students show good analytical skills in evaluating opportunities and business feasibility.
 - **7.5% disagreement** suggests scope to strengthen applied analytical exercises.
-

◆ Q4 — Evaluating Sustainability Strategies, Financial Plans & Resource Linkages

Positive Responses: 97.5%

- Students demonstrate strong evaluative understanding of sustainability and financial viability.
- Indicates readiness to assess long-term sustainability of social enterprises.

✦ Key Insights (Executive Summary)

- ✓ **Excellent conceptual clarity** on social entrepreneurship fundamentals and ecosystem (Q1 & Q2).
- ✓ **Strong analytical skills** in feasibility and planning (Q3), with minor scope for deeper market-based exercises.

- ✓ **High confidence in sustainability evaluation** (Q4), reflecting good integration of finance and resource linkage concepts.

- ✓ Overall outcome attainment is consistently high, ranging from **92.5% to 100%**.

✦ Overall Dashboard Conclusion

The course demonstrates **high effectiveness** in building entrepreneurial mindset, analytical capability, and sustainability awareness. With **over 92% positive responses across all outcomes**, students are well-prepared to conceptualize, evaluate, and sustain social enterprises.

📊 Course Exit Survey – Dashboard Summary

Program: BSW

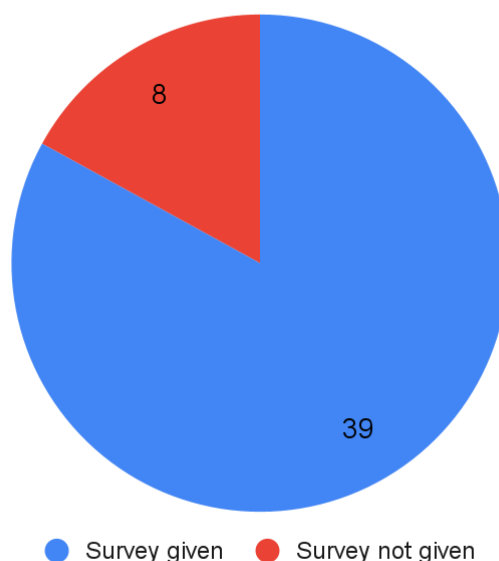
Semester and Year: Sem 3 AY 2025-2026

Course Code: Major 203meTimestampstamp

Course Name: Social Work Practice with Communities

Response Analysis

Total Students: 47



A total of **25 students** responded. Overall feedback indicates **strong conceptual clarity**, good evaluative ability, and **moderate scope for strengthening practical application skills** related to community tools.

Questions

Q1: I was able to remember definitions of community, geographical categorizations, and models of community practice.

Q2: I was able to Understand the evolution of community social work practice in India.

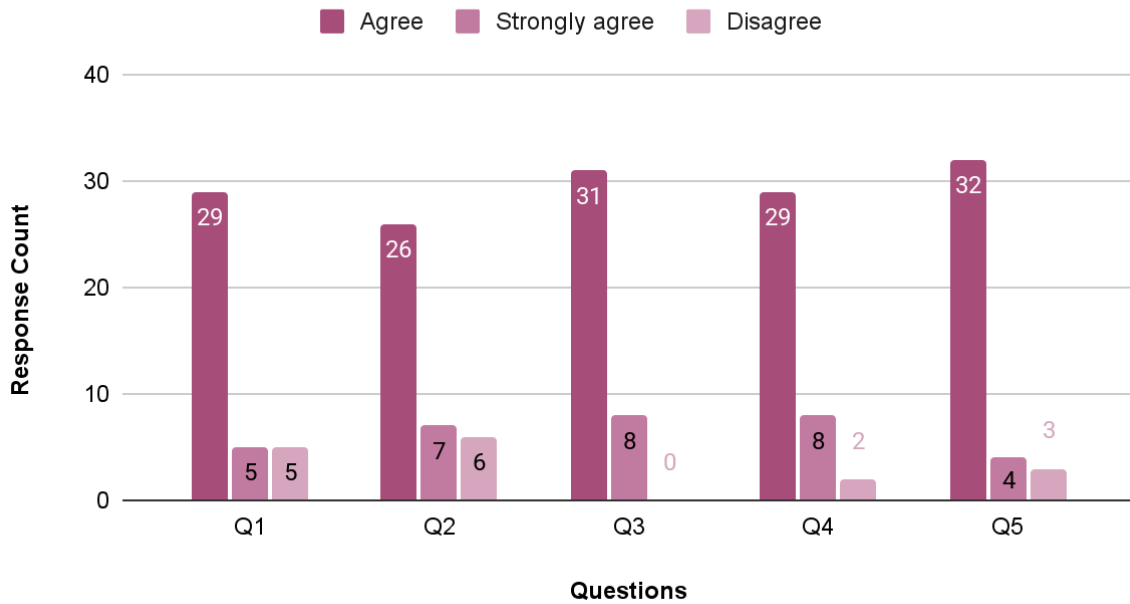
Q3: I was able to evaluate the effectiveness of community interventions and empowerment frameworks.

Q4: I was able to apply the tools like community mapping and resource mapping to understand and address community needs.

Q5: I was able to analyse the community dynamics such as intersections of religion, caste, gender, and ableness through mapping tools.

Outcome Code	Learning Outcome Focus	Strongly Agree (%)	Agree (%)	Disagree (%)	Positive (%)
Q1	Community concepts & models	4%	92%	4%	96%
Q2	Evolution of community social work in India	0%	96%	4%	96%
Q3	Evaluation of interventions & empowerment	8%	88%	4%	96%
Q4	Application of community & resource mapping	20%	76%	4%	96%

Question-wise Analysis



◆ Q1 — Understanding Community Concepts & Models

Positive Responses (SA + A): 96%

- Students demonstrated strong recall of definitions, geographical categorizations, and models of community practice.
- **Minimal disagreement (4%)**, indicating solid foundational learning.

◆ Q2 — Understanding Evolution of Community Social Work in India

Positive Responses: 96%

- Students clearly understood the historical evolution and Indian context of community social work practice.
- **Very strong conceptual outcome**, with only 1 student disagreeing.

◆ Q3 — Evaluating Community Interventions & Empowerment Frameworks

Positive Responses: 96%

- Students showed good evaluative ability regarding intervention effectiveness and empowerment approaches.
 - Indicates strong analytical skills aligned with program outcomes.
-

◆ Q4 — Applying Community & Resource Mapping Tools

Positive Responses: 96%

- Students were largely confident in applying community mapping and resource mapping tools.
- Slight scope for strengthening **hands-on application**, though overall outcome achievement remains high.

✦ Key Insights (Executive Summary)

- ✓ **Consistently high achievement (96%)** across all four learning outcomes.
- ✓ Strong **conceptual and historical understanding** of community and its evolution (Q1 & Q2).
- ✓ Good **analytical ability** in evaluating empowerment and intervention frameworks (Q3).
- ✓ Practical tools (Q4) are well understood, with minor scope for deeper experiential learning.
- ✓ No major learning gaps identified.

✦ Overall Dashboard Conclusion

The course demonstrates **excellent effectiveness**, with **uniformly high outcome attainment (96%)** across conceptual, analytical, and applied dimensions of community social work. Students show strong readiness to engage with community-based practice and intervention planning.

Course Exit Survey – Dashboard Summary

Program: BSW

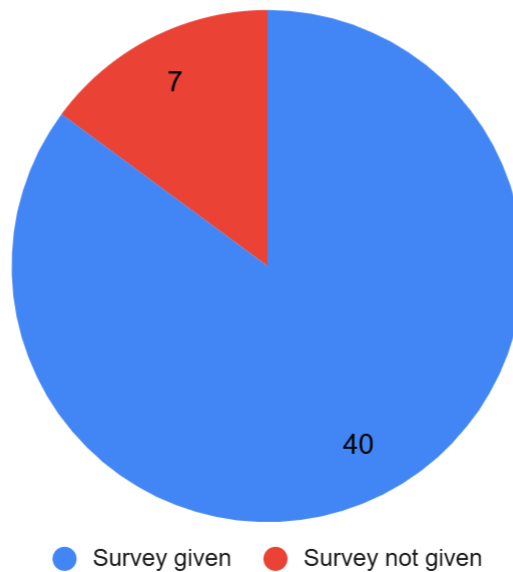
Semester and Year: Sem 3 AY 2025-2026

Course Code: CC 201Timestampstamp

Course Name: Theatre Skills

Response Analysis

Total Students: 47



A total of **40 students** responded. Overall feedback reflects **strong conceptual understanding**, good analytical ability regarding theatre practices, and **high confidence in applying performance techniques**, with moderate scope to strengthen evaluative depth for social impact.

Questions

Q1: I was able to remember the contributions of key figures like Bertolt Brecht and Dario Fo in people's theatre.

Q2: I was able to understand the role of theatre as a medium for social change and its ethical considerations.

Q3: I was able to analyze the different theatre practices, including street plays and folk traditions, for their impact on communities.

Q4: I was able to evaluate the effectiveness of theatre practices in addressing social issues and engaging audiences.

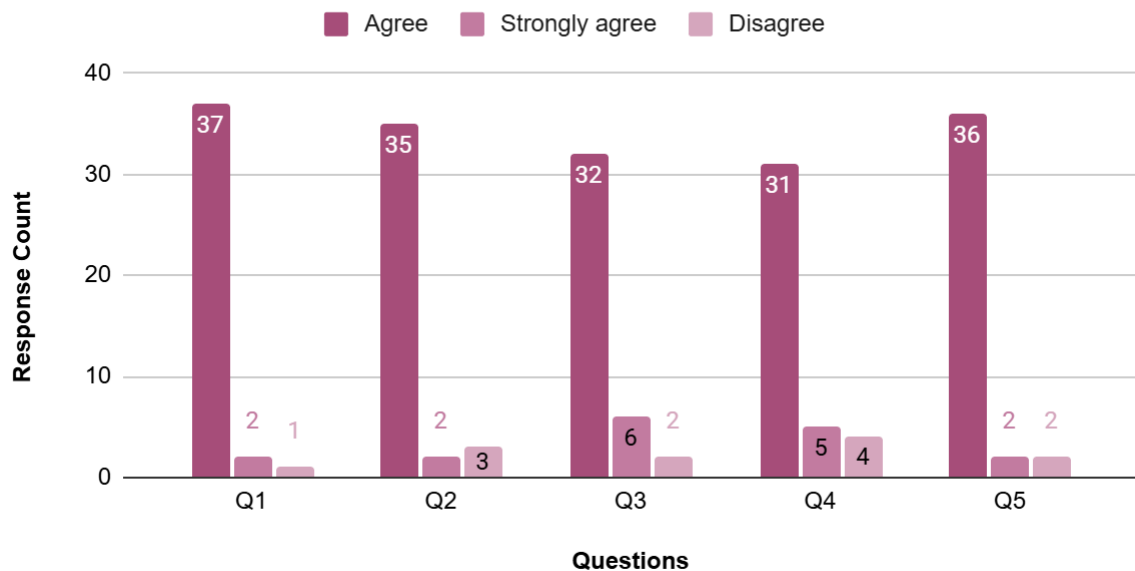
Q5: I was able to apply the acting, improvisation, scriptwriting, and direction techniques to create impactful performances.

Outcome Code	Learning Outcome Focus	Strongly Agree (%)	Agree (%)	Disagree (%)	Positive (%)

Q1	Contributions of key theatre figures	5%	92.5%	2.5%	97.5%
Q2	Theatre for social change & ethics	5%	87.5%	7.5%	92.5%
Q3	Analysis of theatre practices & impact	15%	80%	5%	95%
Q4	Evaluation of theatre effectiveness	12.5%	77.5%	10%	90%
Q5	Application of performance techniques	5%	90%	5%	95%

Response Analysis

Total Students: 47



◆ Q1 — Remembering Contributions of Key Theatre Figures

Positive Responses (SA + A): 97.5%

- Students clearly recall contributions of figures like **Bertolt Brecht** and **Dario Fo**.

- **Minimal disagreement (2.5%)**, indicating strong foundational learning.
-

◆ Q2 — Understanding Theatre as a Medium for Social Change & Ethics

Positive Responses: 92.5%

- Students demonstrate good understanding of theatre's role in social transformation and ethical considerations.
 - **7.5% disagreement** suggests scope for deeper discussion on ethics and responsibility.
-

◆ Q3 — Analyzing Theatre Practices & Community Impact

Positive Responses: 95%

- Strong analytical ability regarding **street theatre, folk traditions, and community engagement**.
 - Indicates effective linkage between practice and social impact.
-

◆ Q4 — Evaluating Effectiveness of Theatre Practices

Positive Responses: 90%

- Students show good evaluative skills in assessing effectiveness of theatre in addressing social issues.
 - **Highest disagreement (10%)**, pointing to a need for more structured evaluation frameworks.
-

◆ Q5 — Applying Performance Techniques

Positive Responses: 95%

- High confidence in applying **acting, improvisation, scriptwriting, and direction techniques**.
- Reflects strong experiential and performance-based learning.

Key Insights (Executive Summary)

- ✓ **Excellent foundational understanding** of people's theatre history and key contributors (Q1).
- ✓ Strong comprehension of **theatre as a tool for social change** (Q2).
- ✓ **High analytical and application skills** in theatre practices and performance techniques (Q3 & Q5).
- ✓ **Evaluation of impact (Q4)** shows relatively higher disagreement, suggesting scope to strengthen critical assessment methods.
- ✓ Overall outcome attainment ranges from **90% to 97.5%**, indicating high course effectiveness.

Overall Dashboard Conclusion

The course demonstrates **high effectiveness** in building historical understanding, social awareness, analytical capability, and performance skills. With **90%–97.5% positive responses across all outcomes**, students are well-prepared to use theatre as a powerful medium for community engagement and social change.