



NIRF ranking in the band of 101 to 150 in the year 2025

NAAC Re-Accredited "A" Grade (3rd Cycle)  
with CGPA 3.53 on a Scale of 4 in 2015; and  
awarded Autonomy Status by UGC in 2019



# **College of Social Work ( Empowered Autonomous ) Nirmala Niketan**

**ACADEMIC YEAR  
2025- 2026**

**OUTCOME BASED  
EDUCATION REPORT  
BSW I**





# **Environment Studies**

BSW

SEM - 1

## **1. Course Overview**

The Environment Studies course is offered to first-year BSW students to build awareness and understanding of environmental issues, sustainability, and responsible use of natural resources. The course supports the institution's vision of social justice and sustainable development by linking environmental concerns with community well-being.

The course outcomes focus on environmental literacy, pollution control, sustainable development goals, and application of environmental knowledge in real-life and field situations. The overall average CO attainment is 2.86, indicating strong achievement of learning outcomes.

## **2. Purpose of the Course Overview Report**

The purpose of this report is to:

- Evaluate the achievement of course outcomes
- Assess the effectiveness of teaching and assessment methods
- Ensure alignment between Course Outcomes and Program Outcomes
- Identify strengths and areas for academic improvement
- Support quality assurance and continuous improvement

## **3. Gap Analysis**

The gap analysis compares target attainment levels with actual student performance.

Key Observations:

- All COs have met or exceeded their target levels, showing effective course delivery.



- CO1 shows slightly lower direct attainment in the external examination, indicating a need for reinforcement of basic concepts and terminology.
- Indirect attainment through student feedback is high, reflecting positive student engagement and understanding.
- PO5 shows comparatively lower attainment, as the course focuses more on awareness and application than on direct intervention planning.

#### **Overall Gap Status:**

The identified gaps are minor and manageable.

### **4. Areas for Improvement / Action Plan**

To further enhance learning outcomes:

- Increase interactive learning activities such as case studies and environmental campaigns
- Strengthen concept revision sessions before summative assessments
- Integrate more field-based observations and community awareness programs
- Encourage project-based learning related to local environmental issues

### **5. Summary and Conclusion**

The Environment Studies course is well-structured and effectively delivered, with strong alignment to program outcomes related to sustainability, social responsibility, and community engagement. Most course outcomes have been achieved beyond the targeted levels, indicating meaningful student learning. Minor gaps identified provide clear directions for further improvement.

Overall, the course plays a vital role in developing environmentally responsible and socially conscious social work professionals.

#### **Field Work I**

BSW

SEM - 1

#### **1. Course Overview**

Field Work I is a foundational practicum course for first-year BSW students aimed at introducing them to professional social work practice. The course enables students to understand the



importance of fieldwork, the role of social workers in diverse settings, and the application of basic tools and techniques in real community contexts.

The course outcomes emphasize experiential learning, professional orientation, need assessment, documentation, and application of social work methods. The average CO attainment is 3, indicating excellent achievement of learning outcomes.

## **2. Purpose of the Course Overview Report**

The purpose of this report is to:

- Assess the effectiveness of field-based learning
- Measure attainment of practical competencies
- Ensure alignment between Course Outcomes and Program Outcomes
- Review student readiness for professional social work practice
- Support continuous academic and fieldwork improvement

## **3. Gap Analysis**

The gap analysis compares target attainment with actual student performance.

Key Observations:

- All COs have significantly exceeded their target levels, reflecting strong student engagement and effective supervision.
- High direct attainment in the external assessment indicates successful acquisition of practical skills and professional orientation.
- Indirect attainment through student feedback is consistently high, confirming positive learning experiences.
- PO8 (lifelong learning) shows comparatively lower mapping, as the course focuses primarily on introductory field exposure.

### **Overall Gap Status:**

There are no critical gaps identified in this course.

## **4. Areas for Improvement / Action Plan**

To further strengthen the course:

- Introduce structured reflective journals to deepen learning
- Increase guided supervision and feedback sessions
- Provide exposure to a wider range of field agencies



- Encourage peer learning through fieldwork presentations

These steps will enhance reflective practice and long-term professional development.

## **5. Summary and Conclusion**

The Field Work I course is effectively designed and successfully implemented, with strong alignment to program outcomes related to practice skills, ethics, and professional identity. The course has achieved all learning outcomes beyond the expected levels, demonstrating the value of experiential learning in social work education.

Overall, the course plays a critical role in shaping competent, ethical, and field-ready social work professionals.

## **Health and Nutrition**

BSW

SEM - 1

### **1. Course Overview**

The Health and Nutrition course is offered to first-year BSW students to provide essential knowledge on nutrition, health, malnutrition, and public health interventions. The course adopts a bio-psychosocial approach to health and emphasizes the role of nutrition in promoting community well-being and social development.

The course outcomes focus on understanding nutrients, health models, malnutrition in India, practical meal planning, and evaluation of government nutrition programs. The average CO attainment is 2.82, indicating satisfactory achievement of learning outcomes.

### **2. Purpose of the Course Overview Report**

The purpose of this report is to:

- Assess the achievement of course outcomes
- Evaluate the effectiveness of teaching–learning and assessment methods
- Ensure alignment between Course Outcomes and Program Outcomes
- Identify strengths and areas for improvement
- Support continuous academic quality enhancement

### **3. Gap Analysis**

The gap analysis compares target attainment levels with actual student performance.

Key Observations:

- CO1 to CO4 have exceeded their target levels, reflecting strong conceptual understanding and practical application.



- CO5 shows a slight gap due to lower indirect attainment, suggesting the need for deeper student engagement with policy evaluation aspects.
- Indirect attainment for most COs is high, indicating positive student feedback and perceived learning.
- PO4 and PO7 show relatively lower attainment, as the course emphasizes health awareness and application more than professional ethics and communication skills.

Overall Gap Status:

The gaps identified are minor and manageable.

#### **4. Areas for Improvement / Action Plan**

To further strengthen the course:

- Include more case-based discussions on national nutrition programs
- Strengthen policy analysis assignments and group discussions
- Increase field-based exposure related to community nutrition
- Encourage reflective learning through short reports and presentations

#### **5. Summary and Conclusion**

The Health and Nutrition course is well-structured and effectively delivered, with strong alignment to program outcomes related to public health awareness, nutrition planning, and social responsibility. Most course outcomes have been achieved beyond the target levels, indicating meaningful student learning. Minor gaps identified offer opportunities for further improvement.

Overall, the course contributes significantly to developing health-aware and socially responsible social work professionals.

### **Indian Knowledge System in Social Work Profession**

BSW

SEM - 1

#### **1. Course Overview**

The Indian Knowledge System in Social Work Profession course introduces first-year BSW students to the historical, philosophical, and cultural foundations of social work in the Indian context. The course emphasizes the contributions of Indian social reformers and philosophical traditions and their relevance to contemporary social work practice.

The course outcomes focus on understanding the evolution of social work, applying traditional methodologies, analyzing the impact of reformers, and evaluating Indian philosophical



frameworks. The average CO attainment is 2.24, indicating moderate achievement of learning outcomes.

## **2. Purpose of the Course Overview Report**

The purpose of this report is to:

- Assess the achievement of course outcomes
- Review the effectiveness of teaching–learning and assessment methods
- Ensure alignment between Course Outcomes and Program Outcomes
- Identify academic strengths and learning gaps
- Support curriculum enrichment and continuous improvement

## **3. Gap Analysis**

The gap analysis compares target attainment levels with actual student performance.

\

Key Observations:

- CO3 and CO4 have exceeded target levels, showing strong understanding of social reformers and philosophical foundations.
- CO1 and CO2 show lower direct attainment, indicating difficulty in recalling historical evolution and applying traditional methodologies.
- CO5 shows a slight gap in indirect attainment, suggesting the need for deeper student reflection on the relevance of Indian knowledge systems.
- Lower PO attainment is observed due to limited practical and application-based assessments in this theory-oriented course.

Overall Gap Status:

The gaps identified are not critical but require focused academic support.

## **4. Areas for Improvement / Action Plan**

To improve learning outcomes:

- Introduce case-based discussions linking Indian philosophies to present-day social work practice



- Use visual timelines and concept maps for better understanding of historical evolution
- Encourage reflective essays and group presentations
- Include application-oriented questions in internal assessments

These steps will help improve conceptual clarity and application skills.

## 5. Summary and Conclusion

The Indian Knowledge System in Social Work Profession course plays an important role in grounding students in indigenous perspectives and ethical foundations of social work. While several course outcomes have been achieved satisfactorily, some gaps indicate the need for enhanced teaching strategies and learner engagement.

Overall, the course contributes meaningfully to developing culturally rooted, value-based social work professionals, with clear scope for improvement through enriched pedagogical practices.

## Introduction to Psychology

BSW

SEM - 1

### 1. Course Overview

The **Introduction to Psychology** course is offered to first-year BSW students to provide a foundational understanding of **human behavior, development, and psychological theories**. The course supports social work practice by helping students understand individual behavior in social and environmental contexts.

The course outcomes focus on psychological processes, major theories of behavior, personality development, and the role of relationships and environment. The **average CO attainment is 2.79**, indicating good achievement of learning outcomes.

### 2. Purpose of the Course Overview Report

The purpose of this report is to:

- Assess the **attainment of course outcomes**
- Evaluate the effectiveness of **teaching–learning and assessment strategies**
- Ensure alignment between **Course Outcomes and Program Outcomes**
- Identify strengths and areas for improvement
- Support **continuous quality enhancement**



### 3. Gap Analysis

The gap analysis compares **target attainment levels** with **actual student performance**.

#### Key Observations:

- All course outcomes have **met or exceeded their target levels**, showing effective course delivery.
- CO1 and CO2 show slightly lower direct attainment in the external examination, indicating the need for reinforcement of basic concepts and theory comparison.
- Indirect attainment through student feedback is consistently high, reflecting positive learning experiences.
- PO5 shows comparatively lower attainment, as the course emphasizes understanding behavior rather than direct intervention planning.

#### Overall Gap Status:

The identified gaps are **minor and non-critical**.

### 4. Areas for Improvement / Action Plan

To further strengthen the course:

- Increase use of **case studies and real-life examples**
- Conduct **revision and concept-mapping sessions** before examinations
- Encourage **interactive discussions** on theory application in social work settings
- Integrate short reflective assignments linked to fieldwork experiences

### 5. Summary and Conclusion

The **Introduction to Psychology** course is well-designed and effectively implemented, with strong alignment to program outcomes related to **behavioral understanding, analytical thinking, and professional preparedness**. Most course outcomes have been achieved beyond target levels, indicating meaningful student learning.

Overall, the course makes a valuable contribution to preparing **competent and psychologically informed social work professionals**.

## Introduction to Social Work Methods

BSW

SEM - 1

### 1. Course Overview



The **Introduction to Social Work Methods** course provides first-year BSW students with a foundational understanding of **social work as a profession** and introduces them to **direct and indirect methods of social work practice**. The course builds essential knowledge required for effective professional intervention with individuals, groups, and communities.

The course outcomes focus on professional orientation, direct intervention methods, understanding indirect methods, and evaluating the effectiveness of social work practice. The **average CO attainment is 2.79**, indicating good achievement of learning outcomes.

## 2. Purpose of the Course Overview Report

The purpose of this report is to:

- Assess the **attainment of course outcomes**
- Review the effectiveness of **teaching–learning and assessment processes**
- Ensure alignment between **Course Outcomes and Program Outcomes**
- Identify strengths and areas for improvement
- Support **continuous academic quality improvement**

## 3. Gap Analysis

The gap analysis compares **target attainment levels** with **actual student performance**.

### Key Observations:

- All course outcomes have **exceeded their target levels**, showing effective conceptual understanding of social work methods.
- Slightly lower direct attainment in the external examination for CO1 and CO3 indicates the need for further reinforcement of theoretical concepts.
- Indirect attainment through student feedback is consistently high, reflecting positive learning experiences.
- Lower PO attainment in PO1, PO4, and PO5 is due to limited field exposure at the first-year level.

### Overall Gap Status:

The gaps identified are **minor and manageable**.

## 4. Areas for Improvement / Action Plan

To further enhance learning outcomes:

- Introduce **more practice-oriented examples and case studies**
- Strengthen **revision sessions** for theoretical foundations



- Integrate **field-based illustrations** in classroom teaching
- Encourage **group discussions and reflective assignments**

## 5. Summary and Conclusion

The **Introduction to Social Work Methods** course is well-designed and effectively delivered, providing students with a strong foundation in **professional social work practice**. Most course outcomes have been achieved beyond the target levels, indicating meaningful student learning. Overall, the course plays a key role in preparing **competent and method-oriented social work professionals**, with clear scope for further strengthening through applied learning approaches.

## Orientation to Field Practicum

BSW

SEM - 1

### 1. Course Overview

The course **Orientation to Field Practicum (VSC 101)** is offered to first-year **Bachelor of Social Work (BSW)** students with the objective of introducing them to the foundational concepts, principles, and practices of social work field education. The course is aligned with the institution's vision of promoting **human dignity and social justice** and its mission of preparing competent, value-based social work professionals.

The course equips students with an understanding of the **roles and responsibilities of social workers**, basic fieldwork ethics, observational skills, community mapping, and need assessment techniques. The defined **Course Outcomes (COs)** emphasize knowledge acquisition, understanding of professional roles, application of observation and documentation tools, and practical exposure to community-based learning.

The **CO-PO mapping** demonstrates strong alignment, particularly with Program Outcomes related to **professional ethics, application of social work methods, problem-solving for vulnerable populations, communication skills, and lifelong learning**. The overall **average CO attainment of 2.66** indicates satisfactory achievement of expected learning outcomes through **direct assessment (80%)** and **indirect assessment (20%)**, confirming the effectiveness of course delivery and assessment methods.

### 2. Purpose of the Course Overview Report

The purpose of preparing this course overview report is to:

- Evaluate the effectiveness of the Orientation to Field Practicum course
- Measure the attainment of course outcomes through direct and indirect assessments
- Examine alignment between Course Outcomes and Program Outcomes



- Identify strengths and gaps in field-based learning preparedness
- Support academic planning, quality assurance, and continuous improvement processes

This report helps the department ensure that students are adequately prepared for subsequent fieldwork and professional engagement in social work practice

### 3. Gap Analysis

The gap analysis compares the **target attainment levels** with the **actual attainment levels** achieved by students.

#### Key Observations:

- **CO1 to CO4** have achieved attainment levels higher than their respective targets, indicating strong understanding of fieldwork concepts, professional responsibilities, observation techniques, and community mapping skills.
- **CO5** shows a noticeable gap, as the final attainment (2.4) is slightly below the target level (3). This gap is mainly due to **zero indirect attainment**, suggesting limited student confidence or reflection in areas related to need assessment and documentation of fieldwork experiences.
- Program Outcome attainment shows relatively moderate scores for **PO4 (professional ethics)** and **PO7 (communication and collaboration)**, which is expected at the introductory stage of field exposure.

#### Overall Gap Status:

The identified gaps are limited and developmental in nature, reflecting the introductory level of the course rather than any major shortcomings in course design or delivery.

### 4. Areas for Improvement / Action Plan

To address the identified gaps and further strengthen student learning outcomes, the following measures are recommended:

- Increase structured guidance and mentoring during field documentation and need assessment activities
- Introduce reflective journals and guided self-evaluation for field experiences
- Conduct workshops on report writing, case documentation, and field observation techniques
- Integrate group discussions and experience-sharing sessions after field exposure
- Strengthen indirect assessment mechanisms to capture students' reflective learning outcomes

These measures will enhance **CO5 attainment** and improve students' readiness for advanced fieldwork practice .



## 5. Summary and Conclusion

The **Orientation to Field Practicum (VSC 101)** course is effectively designed and well-aligned with the objectives of the Bachelor of Social Work program. Most course outcomes have been achieved beyond the target levels, indicating effective teaching strategies and assessment practices. The minor gap identified in practical documentation skills provides a clear direction for focused improvement.

Overall, the course plays a crucial role in building a strong foundation for **professional social work practice**, ethical engagement, and community-oriented learning, thereby supporting the institution's mission of holistic and value-based education.

## Professional Values and Ethics

BSW

SEM - 1

### 1. Course Overview

The course **Professional Values and Ethics (VEC 101)** is designed for first-year **BSW** students to build a strong foundation in professional values, ethics, and ethical decision-making in social work practice. The course aligns with the institution's vision of **human dignity and social justice**.

The **Course Outcomes (COs)** focus on understanding the concept of profession, professional identity, ethical dilemmas, ethical decision-making, and application of professional ethical frameworks such as **IFSW guidelines**. The **CO–PO mapping** shows strong alignment, especially with program outcomes related to **professional ethics, social justice, problem-solving, and responsible practice**.

The overall **average CO attainment is 2.56**, indicating satisfactory achievement of learning outcomes through **direct (80%) and indirect (20%) assessment methods**.

### 2. Purpose of the Course Overview Report

The purpose of this course overview report is to:

- Review the effectiveness of teaching and assessment methods
- Measure the attainment of course outcomes
- Ensure alignment between course outcomes and program outcomes
- Identify strengths and learning gaps
- Support academic quality assurance and continuous improvement



### 3. Gap Analysis

The gap analysis compares the **target attainment** with the **actual attainment** of course outcomes.

#### Key Observations:

- **CO1, CO3, and CO4** have achieved or exceeded the target levels, showing good understanding of professional concepts and ethical analysis.
- **CO2** shows a noticeable gap, indicating that some students need better clarity on the transition from occupation to profession.
- **CO5** shows a minor gap due to low indirect attainment, suggesting limited confidence in applying ethical frameworks in practical situations.

#### Overall Gap Status:

The gaps identified are moderate and expected at the introductory level of professional ethics education.

### 4. Areas for Improvement / Action Plan

To address the identified gaps, the following steps are recommended:

- Use more case studies and real-life ethical scenarios
- Conduct classroom discussions on professional identity and ethical dilemmas
- Encourage reflective writing and ethical decision-making exercises
- Strengthen indirect assessment through student feedback and self-reflection

These actions will improve understanding and application of professional values and ethics.

### 5. Summary and Conclusion

The **Professional Values and Ethics** course is well-structured and aligned with the objectives of the BSW program. Most course outcomes have been satisfactorily achieved, reflecting effective teaching practices. The identified gaps provide clear opportunities for improvement. Overall, the course plays an important role in developing **ethical awareness, professional responsibility, and value-based practice** among social work students.

### Wellness and Yoga

BSW

SEM - 1

#### 1. Course Overview

The course **Wellness and Yoga (CC 101)** is offered to first-year **BSW** students to promote awareness of personal and community wellness through healthy lifestyle practices and yogic



principles. The course aligns with the institution's vision of **human dignity, holistic well-being, and social justice**.

The **Course Outcomes (COs)** focus on understanding wellness dimensions, lifestyle diseases, impact of unhealthy habits, evaluation of wellness strategies, and application of yoga and stress-management techniques. The **CO–PO mapping** shows good alignment with program outcomes related to **ethical living, problem-solving, lifelong learning, and community well-being**.

The overall **average CO attainment of 2.88** reflects strong student performance, supported by effective **direct (80%) and indirect (20%) assessment methods**.

## **2. Purpose of the Course Overview Report**

The purpose of this course overview report is to:

- Assess the effectiveness of course delivery and assessments
- Measure attainment of course outcomes
- Ensure alignment between course outcomes and program outcomes
- Identify strengths and minor gaps in wellness education
- Support quality assurance and continuous academic improvement

## **3. Gap Analysis**

The gap analysis compares the **target attainment** with the **actual attainment** levels.

### **Key Observations:**

- **CO1 to CO4** have achieved or exceeded target levels, showing strong understanding of wellness concepts, lifestyle health issues, and yogic principles.
- **CO5** shows a minor gap due to lower indirect attainment, indicating the need for increased student confidence in applying yoga and relaxation techniques independently.

### **Overall Gap Status:**

The identified gap is minimal and does not affect the overall effectiveness of the course.

## **4. Areas for Improvement / Action Plan**

To further strengthen learning outcomes, the following actions are suggested:

- Encourage regular practice of yoga and relaxation techniques
- Include reflective activities on personal wellness experiences
- Promote group discussions on stress management and healthy lifestyles
- Strengthen indirect feedback mechanisms

These steps will enhance practical application and long-term wellness awareness.



## **ssssss5. Summary and Conclusion**

The **Wellness and Yoga** course is well-designed and effectively delivered, with most course outcomes achieved above target levels. Minor gaps identified provide scope for further enhancement.

Overall, the course contributes positively to students' **physical, mental, and emotional well-being**, supporting holistic development and readiness for social work practice.



## COURSE OVERVIEW

BSW | Batch 2025-2028 | FIRST YEAR 2025-2026



English I

( AEC 101 )

Course Overview



---

## Vision

To contribute to building a new social order based on human dignity and social justice.

## Mission

**M1:** To work with a preferential option for the vulnerable and exploited, both locally and globally.

**M2:** To build a cadre of young, competent professionals having a global perspective and a strong value base of compassion, personal integrity, moderation, tolerance and self-respect.



---

## Program Outcome (PO)

Sr. No	PO
1	Graduates will critically analyze social realities, understand their changing dynamics, and actively engage in processes that contribute to positive social transformation.
2	They will demonstrate an in-depth understanding of diverse communities, their unique challenges, and systemic inequalities, and advocate for social justice in their professional practice.
3	Graduates will apply appropriate social work methods and strategies to effectively work with individuals, groups, and communities, addressing various social issues.
4	They will embody professional social work values and ethics, ensuring integrity, respect, and accountability in all aspects of their practice.
5	Graduates will develop problem-solving abilities and intervention strategies tailored to the needs of marginalized and vulnerable populations.
6	They will integrate research and evidence-based knowledge to design, implement, and evaluate social work interventions effectively.
7	Graduates will exhibit strong communication skills and the ability to collaborate with multidisciplinary teams to address social challenges holistically.
8	They will demonstrate a commitment to lifelong learning, staying informed about emerging trends and practices in the field of social work.



---

## Course Outcomes

**CO1:** To recall synonyms, antonyms, prefixes, suffixes, and root words to enhance vocabulary.

**CO2:** To understand sentence structures and corrections to improve writing clarity.

**CO3:** To analyze text to differentiate between fact and opinion to enhance critical reading skills.

**CO4:** To evaluate written and spoken communication for accuracy and effectiveness to foster effective interpersonal skills.

**CO5:** To apply language skills in practical conversations and job application letters to enhance real-world communication.



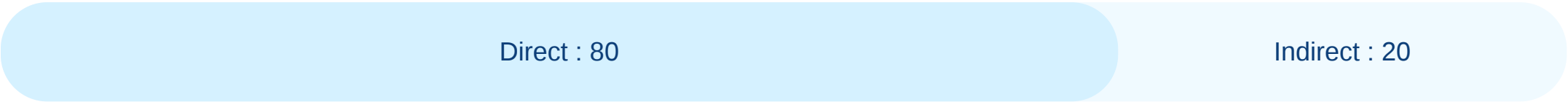
---

## CO - PO - PSO Mapping

CO / PO / PSO	PO1	PO2	PO3	PO4	PO5	PO6	PO7	PO8	Average
CO1	1	1	1	1	1	1	2	2	1.25
CO2	2	2	2	2	1	2	2	2	1.88
CO3	3	3	3	2	2	3	3	3	2.75
CO4	3	3	3	3	2	3	3	3	2.88
CO5	3	3	2	3	3	3	3	3	2.88
Average	2.4	2.4	2.2	2.2	1.8	2.4	2.6	2.6	



# CO Weightages Based on attainment type



## CO targets & Attainment Levels

COs	Target	Direct Attainment levels				Indirect Attainment levels			
		Level 0	Level 1	Level 2	Level 3	Level 0	Level 1	Level 2	Level 3
CO1	1.25	0 - 1	2 - 40	41 - 50	51 - 100	0 - 1	2 - 40	41 - 50	51 - 100
CO2	1.87	0 - 1	2 - 40	41 - 50	51 - 100	0 - 1	2 - 40	41 - 50	51 - 100
CO3	2.75	0 - 1	2 - 40	41 - 50	51 - 100	0 - 1	2 - 40	41 - 50	51 - 100
CO4	2.87	0 - 1	2 - 40	41 - 50	51 - 100	0 - 1	2 - 40	41 - 50	51 - 100
CO5	2.87	0 - 1	2 - 40	41 - 50	51 - 100	0 - 1	2 - 40	41 - 50	51 - 100



---

## Formative (CIE) Assessments

Sr No	Exam Name	Total Marks	Threshold in %	CO1	CO2	CO3	CO4	CO5	Avg Attainment
1	Unit 1/Class Test	10	50	3	3	3	3	3	3
2	Unit 2/Elocution	10	50	3	3	3	3	3	3



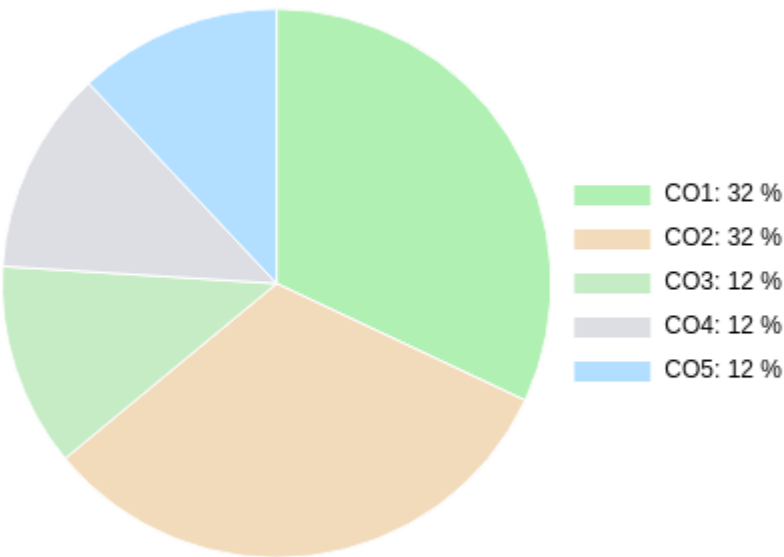
---

## Summative (SEE) Assessments

Sr No	Exam Name	Total Marks	Threshold in %	CO1	CO2	CO3	CO4	CO5	Avg Attainment
3	External Exam	30	50	3	2	3	3	3	2.8



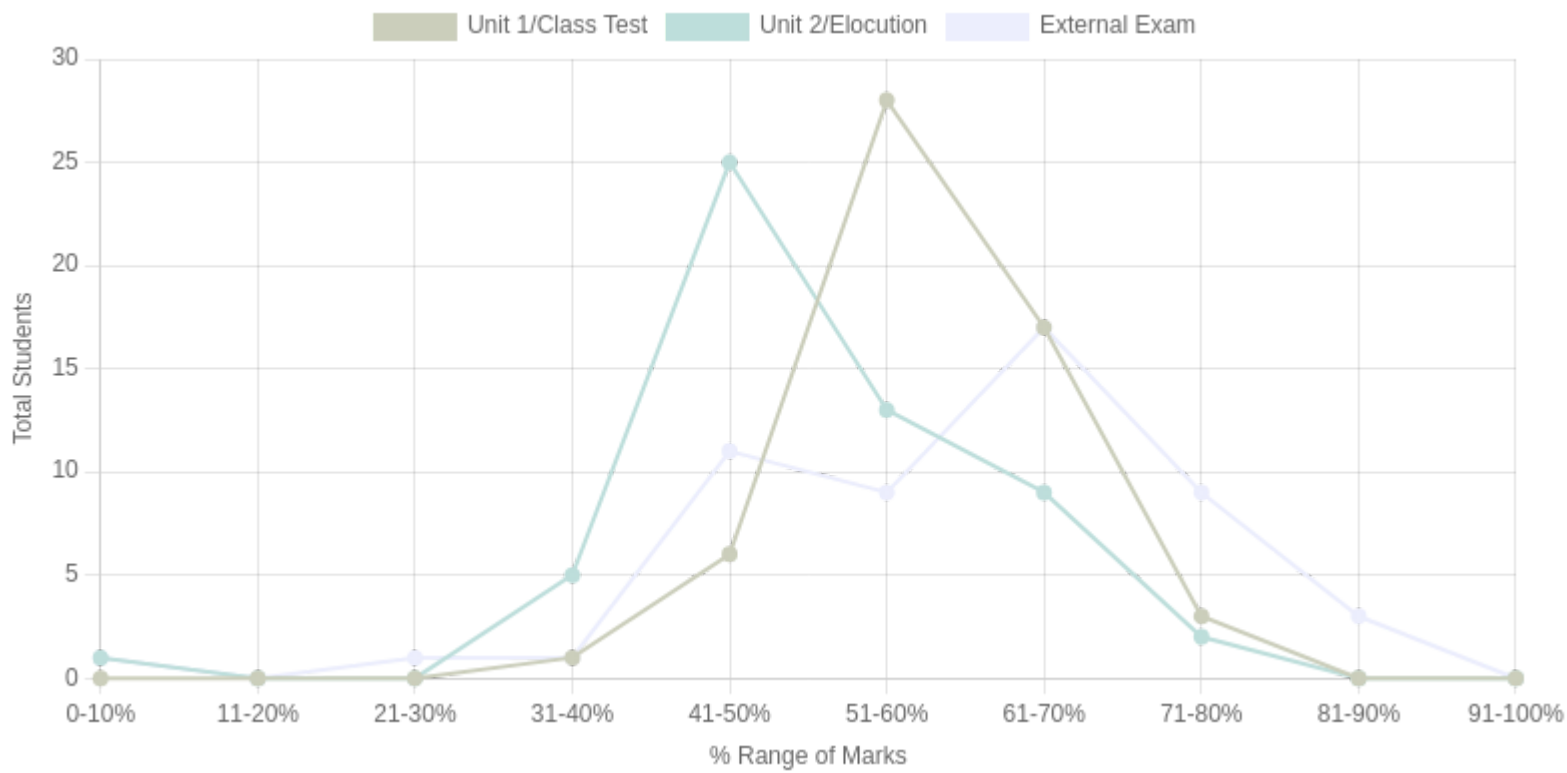
# CO Coverage



COs	CO1	CO2	CO3	CO4	CO5
50	16	16	6	6	6
%	32	32	12	12	12



# Student % wise Distribution





Sr No	Assessment Title	Type	Total Marks	Avg Marks	Threshold in %	No of Students Scoring										Total Students Above Threshold
						0-10%	11-20%	21-30%	31-40%	41-50%	51-60%	61-70%	71-80%	81-90%	91-100%	
1	Unit 1/Class Test	F	10	6.27	50	0	0	0	1	6	28	17	3	0	0	54
2	Unit 2/Elocution	F	10	5.49	50	1	0	0	5	25	13	9	2	0	0	49
3	External Exam	S	30	12.72	50	1	0	1	1	11	9	17	9	3	0	45



# Indirect Attainment

Feedback Details	CO wise analysis				
<b>Course Exit Survey-BSW-Sem1-2025-2026</b>  <b>Type:</b> Course Feedback <b>Publish Date:</b> 01/12/2025 <b>Last Date:</b> 02/12/2025 <b>Feedback conduction:</b> Backdated <b>Total Students:</b> 55 <b>Responses Received:</b> 47 <b>Consider for Attainment:</b> <input checked="" type="checkbox"/>	COS and Questions	CO1	CO2	CO3	CO4
		Q1	Q2	Q3	Q4
	Students Above Threshold	32/55	36/55	39/55	40/55
	Students Above Threshold in %	58.18%	65.45%	70.9%	72.72%
	Attainment After comparing with attainment Levels	3	3	3	3
	Average	3	3	3	3



# CO Attainment

CO	Direct Attainment	Indirect Attainment	Final Attainment	Target	Gap	Justification
CO1	3	3	3	1.25	1.75	-
CO2	2.66	3	2.72	1.87	0.85	-
CO3	3	3	3	2.75	0.25	-
CO4	3	3	3	2.87	0.12	-
CO5	3	0	2.4	2.87	-0.47	-

Average CO Attainment : 2.82



# PO Direct Attainment

POs	PO1	PO2	PO3	PO4	PO5	PO6	PO7	PO8
Weighted Avg	2.4	2.4	2.2	2.2	1.8	2.4	2.6	2.6

Average CO Attainment : 2.82

POs	PO1	PO2	PO3	PO4	PO5	PO6	PO7	PO8
Calculation	2.4 (2.82) / 3	2.4 (2.82) / 3	2.2 (2.82) / 3	2.2 (2.82) / 3	1.8 (2.82) / 3	2.4 (2.82) / 3	2.6 (2.82) / 3	2.6 (2.82) / 3
Direct Attainment	2.26	2.26	2.07	2.07	1.69	2.26	2.44	2.44



---

## COURSE OVERVIEW | BSW



## COURSE OVERVIEW

BSW | Batch 2025-2028 | FIRST YEAR 2025-2026



Environment Studies

( SEC 101 )

Course Overview



---

## Vision

To contribute to building a new social order based on human dignity and social justice.

## Mission

**M1:** To work with a preferential option for the vulnerable and exploited, both locally and globally.

**M2:** To build a cadre of young, competent professionals having a global perspective and a strong value base of compassion, personal integrity, moderation, tolerance and self-respect.



---

## Program Outcome (PO)

Sr. No	PO
1	Graduates will critically analyze social realities, understand their changing dynamics, and actively engage in processes that contribute to positive social transformation.
2	They will demonstrate an in-depth understanding of diverse communities, their unique challenges, and systemic inequalities, and advocate for social justice in their professional practice.
3	Graduates will apply appropriate social work methods and strategies to effectively work with individuals, groups, and communities, addressing various social issues.
4	They will embody professional social work values and ethics, ensuring integrity, respect, and accountability in all aspects of their practice.
5	Graduates will develop problem-solving abilities and intervention strategies tailored to the needs of marginalized and vulnerable populations.
6	They will integrate research and evidence-based knowledge to design, implement, and evaluate social work interventions effectively.
7	Graduates will exhibit strong communication skills and the ability to collaborate with multidisciplinary teams to address social challenges holistically.
8	They will demonstrate a commitment to lifelong learning, staying informed about emerging trends and practices in the field of social work.



---

## Course Outcomes

- CO1:** Able to remember concepts, definitions and communicate clearly and competently on matters of environmental concern and understanding to a variety of audiences in appropriate forms.
- CO2:** Understand and explain the types of pollution, effects and ways to prevent these forms of pollution as well as discuss the misuse of natural resources, and its implications and identify interventions to address the same.
- CO3:** Critical analysis of the MDGs, SGDs, initiatives taken up by Govt and various other stakeholders and what more can be done for moving towards a sustainable lifestyle.
- CO4:** Apply the skills and knowledge learnt to conduct awareness sessions, research and analyse environmental issues scientifically and learn how to use those skills in applied situations in the field.



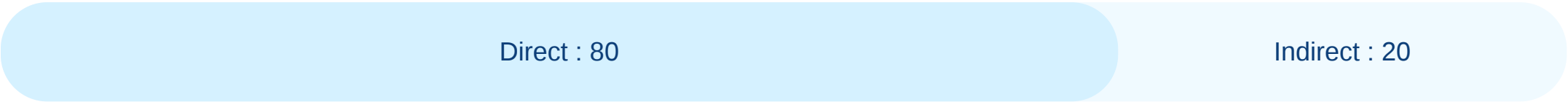
---

## CO - PO - PSO Mapping

CO / PO / PSO	PO1	PO2	PO3	PO4	PO5	PO6	PO7	PO8	Average
CO1	3	2	2	2	1	2	3	3	2.25
CO2	3	3	3	2	2	2	2	3	2.50
CO3	3	3	2	3	3	3	3	3	2.88
CO4	3	3	3	3	3	3	3	3	3.00
Average	3	2.75	2.5	2.5	2.25	2.5	2.75	3	



## CO Weightages Based on attainment type



## CO targets & Attainment Levels

COs	Target	Direct Attainment levels				Indirect Attainment levels			
		Level 0	Level 1	Level 2	Level 3	Level 0	Level 1	Level 2	Level 3
CO1	2.25	0 - 1	2 - 40	41 - 50	51 - 100	0 - 1	2 - 40	41 - 50	51 - 100
CO2	2.5	0 - 1	2 - 40	41 - 50	51 - 100	0 - 1	2 - 40	41 - 50	51 - 100
CO3	2.87	0 - 1	2 - 40	41 - 50	51 - 100	0 - 1	2 - 40	41 - 50	51 - 100
CO4	3	0 - 1	2 - 40	41 - 50	51 - 100	0 - 1	2 - 40	41 - 50	51 - 100



---

## Formative (CIE) Assessments

Sr No	Exam Name	Total Marks	Threshold in %	CO1	CO2	CO3	CO4	Avg Attainment
1	Unit 1/Group Work Sheet	10	50	3	3	3	3	3
2	Unit 2/Group Work Sheet	10	50	3	3	3	3	3



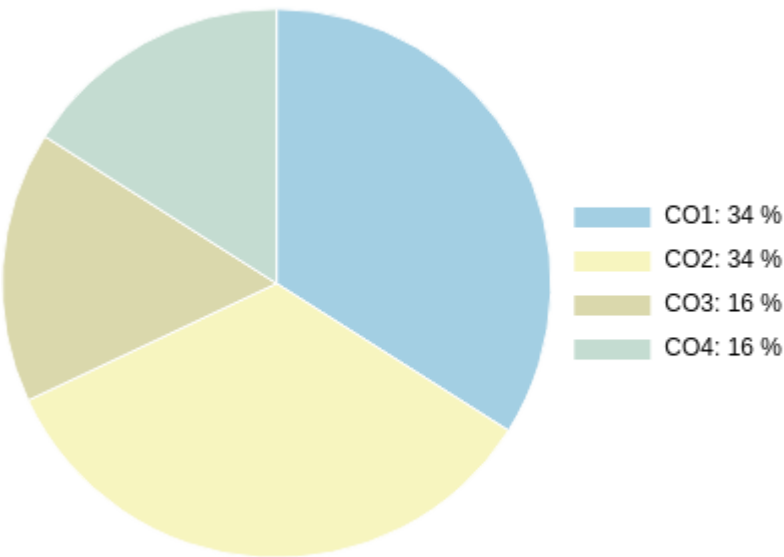
---

## Summative (SEE) Assessments

Sr No	Exam Name	Total Marks	Threshold in %	CO1	CO2	CO3	CO4	Avg Attainment
3	External Exam	30	50	1	3	3	3	2.5



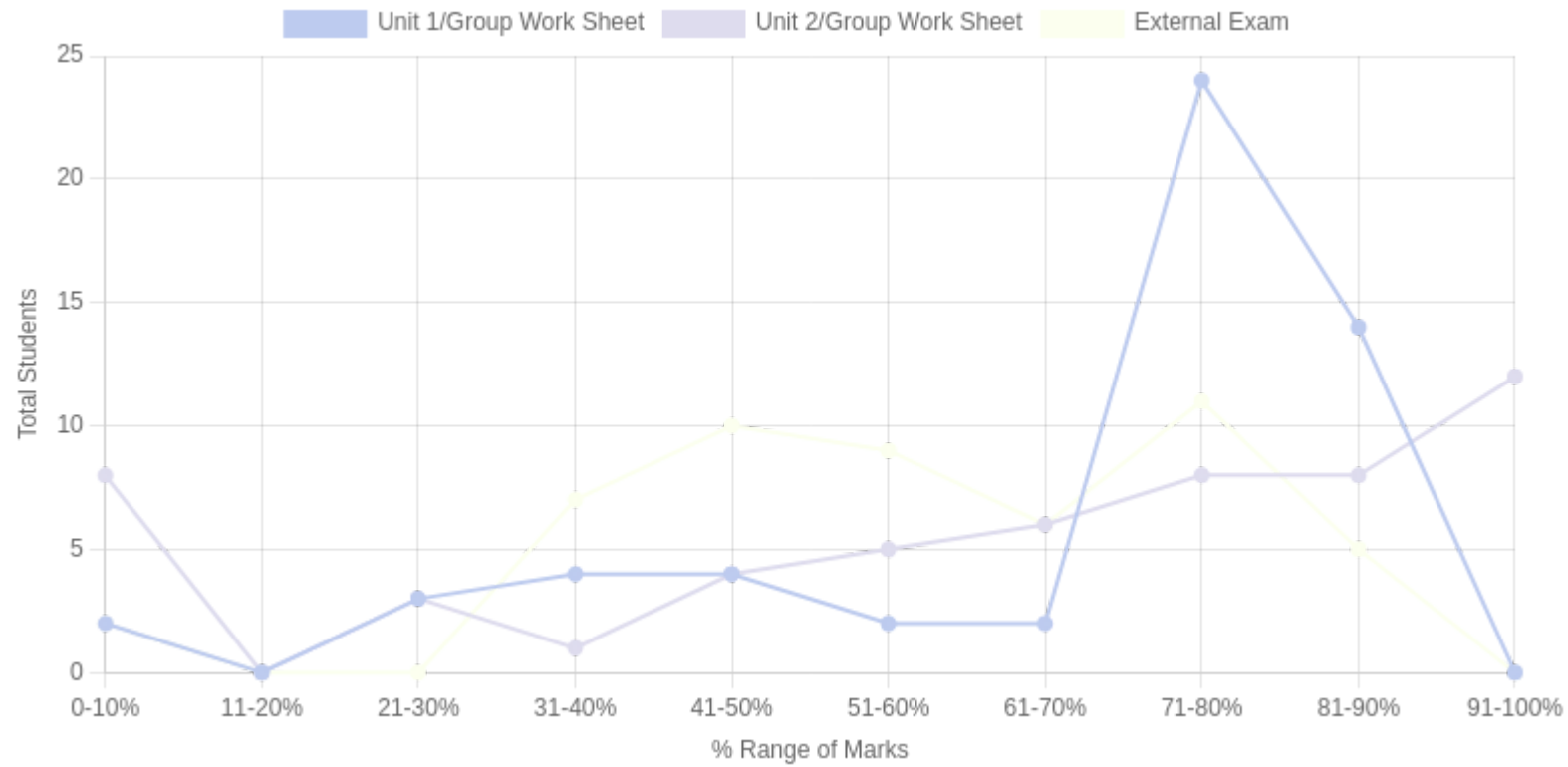
# CO Coverage



COs	CO1	CO2	CO3	CO4
50	17	17	8	8
%	34	34	16	16



## Student % wise Distribution





Sr No	Assessment Title	Type	Total Marks	Avg Marks	Threshold in %	No of Students Scoring										Total Students Above Threshold
						0-10%	11-20%	21-30%	31-40%	41-50%	51-60%	61-70%	71-80%	81-90%	91-100%	
1	Unit 1/Group Work Sheet	F	10	6.86	50	2	0	3	4	4	2	2	24	14	0	44
2	Unit 2/Group Work Sheet	F	10	6.56	50	8	0	3	1	4	5	6	8	8	12	43
3	External Exam	S	30	12.78	50	2	0	0	7	10	9	6	11	5	0	36



# Indirect Attainment

Feedback Details	CO wise analysis				
<b>Course Exit Survey-BSW-Sem1-2025-2026</b>  <b>Type:</b> Course Feedback <b>Publish Date:</b> 01/12/2025 <b>Last Date:</b> 02/12/2025 <b>Feedback conduction:</b> Backdated <b>Total Students:</b> 55 <b>Responses Received:</b> 47 <b>Consider for Attainment:</b> <input checked="" type="checkbox"/>	COS and Questions	CO1	CO2	CO3	CO4
		Q1	Q2	Q3	Q4
	Students Above Threshold	32/55	36/55	39/55	40/55
	Students Above Threshold in %	58.18%	65.45%	70.9%	72.72%
	Attainment After comparing with attainment Levels	3	3	3	3
	Average	3	3	3	3



---

## CO Attainment

CO	Direct Attainment	Indirect Attainment	Final Attainment	Target	Gap	Justification
CO1	2.33	3	2.46	2.25	0.2	-
CO2	3	3	3	2.5	0.5	-
CO3	3	3	3	2.87	0.12	-
CO4	3	3	3	3	0	-

Average CO Attainment : 2.86



# PO Direct Attainment

POs	PO1	PO2	PO3	PO4	PO5	PO6	PO7	PO8
Weighted Avg	3	2.75	2.5	2.5	2.25	2.5	2.75	3

Average CO Attainment : 2.86

POs	PO1	PO2	PO3	PO4	PO5	PO6	PO7	PO8
Calculation	$3 (2.86) / 3$	$2.75 (2.86) / 3$	$2.5 (2.86) / 3$	$2.5 (2.86) / 3$	$2.25 (2.86) / 3$	$2.5 (2.86) / 3$	$2.75 (2.86) / 3$	$3 (2.86) / 3$
Direct Attainment	2.86	2.62	2.38	2.38	2.15	2.38	2.62	2.86



---

## COURSE OVERVIEW | BSW



## COURSE OVERVIEW

BSW | Batch 2025-2028 | FIRST YEAR 2025-2026



Field Work I

( Major 102 )

Course Overview



---

## Vision

To contribute to building a new social order based on human dignity and social justice.

## Mission

**M1:** To work with a preferential option for the vulnerable and exploited, both locally and globally.

**M2:** To build a cadre of young, competent professionals having a global perspective and a strong value base of compassion, personal integrity, moderation, tolerance and self-respect.



---

## Program Outcome (PO)

Sr. No	PO
1	Graduates will critically analyze social realities, understand their changing dynamics, and actively engage in processes that contribute to positive social transformation.
2	They will demonstrate an in-depth understanding of diverse communities, their unique challenges, and systemic inequalities, and advocate for social justice in their professional practice.
3	Graduates will apply appropriate social work methods and strategies to effectively work with individuals, groups, and communities, addressing various social issues.
4	They will embody professional social work values and ethics, ensuring integrity, respect, and accountability in all aspects of their practice.
5	Graduates will develop problem-solving abilities and intervention strategies tailored to the needs of marginalized and vulnerable populations.
6	They will integrate research and evidence-based knowledge to design, implement, and evaluate social work interventions effectively.
7	Graduates will exhibit strong communication skills and the ability to collaborate with multidisciplinary teams to address social challenges holistically.
8	They will demonstrate a commitment to lifelong learning, staying informed about emerging trends and practices in the field of social work.



---

## Course Outcomes

**CO1:** Understand the concept and relevance of Fieldwork practicum in Social Work Education

**CO2:** Understand the role of the social worker across various field settings

**CO3:** Develop basic skills and techniques in need assessment and professional documentation.

**CO4:** Apply tools, and techniques of social work practice and programme media learned in Fieldwork.



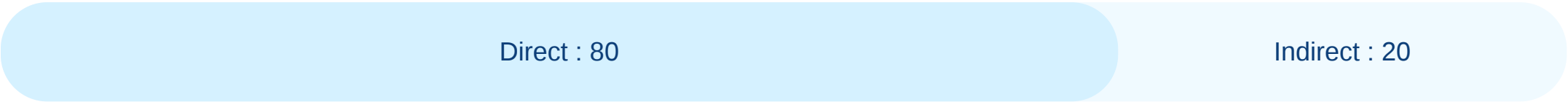
---

## CO - PO - PSO Mapping

CO / PO / PSO	PO1	PO2	PO3	PO4	PO5	PO6	PO7	PO8	Average
CO1	2	2	2	1	1	2	1	2	1.63
CO2	2	3	3	2	2	2	3	2	2.38
CO3	1	2	3	2	3	2	2	1	2.00
CO4	3	3	3	3	3	3	3	2	2.88
Average	2	2.5	2.75	2	2.25	2.25	2.25	1.75	



# CO Weightages Based on attainment type



## CO targets & Attainment Levels

COs	Target	Direct Attainment levels				Indirect Attainment levels			
		Level 0	Level 1	Level 2	Level 3	Level 0	Level 1	Level 2	Level 3
CO1	1.62	0 - 1	2 - 40	41 - 50	51 - 100	0 - 1	2 - 40	41 - 50	51 - 100
CO2	2.37	0 - 1	2 - 40	41 - 50	51 - 100	0 - 1	2 - 40	41 - 50	51 - 100
CO3	2	0 - 1	2 - 40	41 - 50	51 - 100	0 - 1	2 - 40	41 - 50	51 - 100
CO4	2.87	0 - 1	2 - 40	41 - 50	51 - 100	0 - 1	2 - 40	41 - 50	51 - 100



---

# Formative (CIE) Assessments

Sr No	Exam Name	Total Marks	Threshold in %	CO1	CO2	CO3	CO4	Avg Attainment
-------	-----------	-------------	----------------	-----	-----	-----	-----	----------------



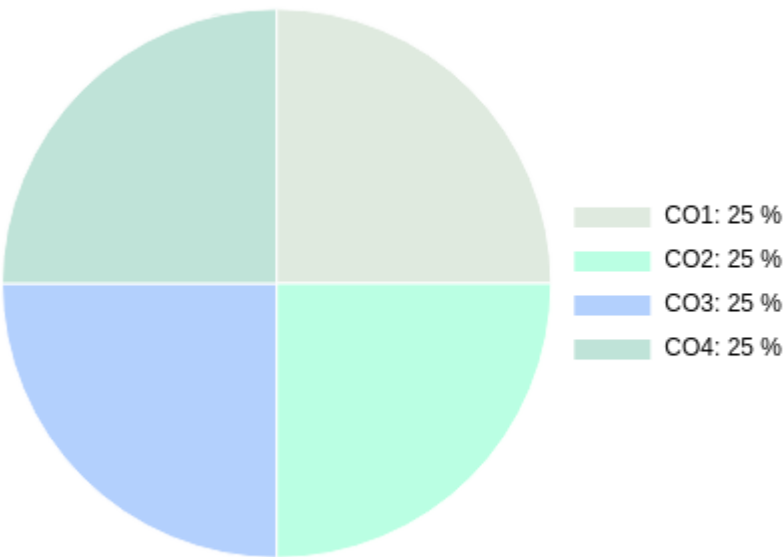
---

## Summative (SEE) Assessments

Sr No	Exam Name	Total Marks	Threshold in %	CO1	CO2	CO3	CO4	Avg Attainment
1	External Exam	100	50	3	3	3	3	3



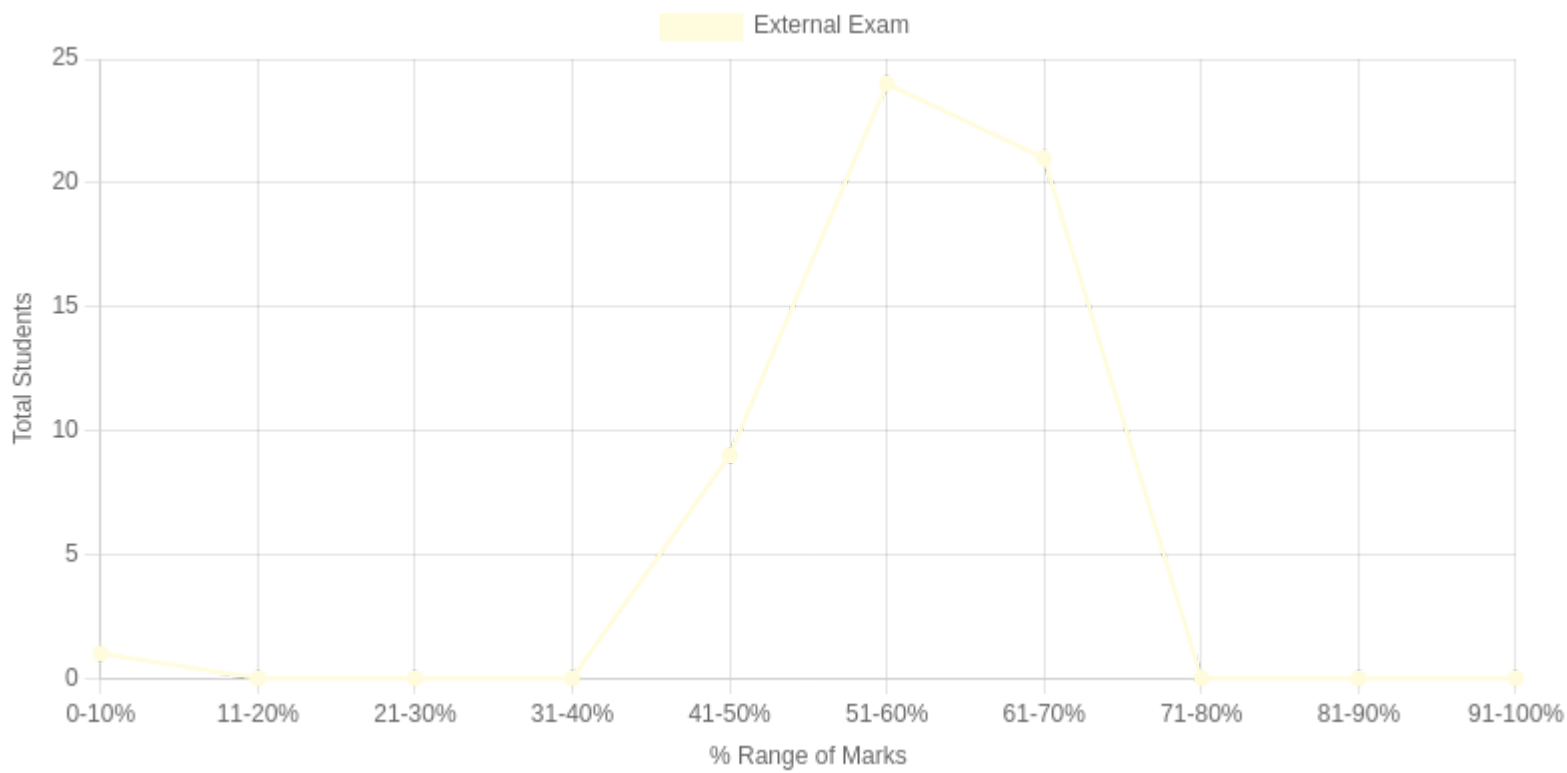
# CO Coverage



COs	CO1	CO2	CO3	CO4
100	25	25	25	25
%	25	25	25	25



# Student % wise Distribution





Sr No	Assessment Title	Type	Total Marks	Avg Marks	Threshold in %	No of Students Scoring										Total Students Above Threshold
						0-10%	11-20%	21-30%	31-40%	41-50%	51-60%	61-70%	71-80%	81-90%	91-100%	
1	External Exam	S	100	56.81	50	1	0	0	0	9	24	21	0	0	0	48



# Indirect Attainment

Feedback Details	CO wise analysis				
<b>Course Exit Survey-BSW-Sem1-2025-2026</b>  <b>Type:</b> Course Feedback <b>Publish Date:</b> 01/12/2025 <b>Last Date:</b> 02/12/2025 <b>Feedback conduction:</b> Backdated <b>Total Students:</b> 55 <b>Responses Received:</b> 47 <b>Consider for Attainment:</b> <input checked="" type="checkbox"/>	COS and Questions	CO1	CO2	CO3	CO4
		Q1	Q2	Q3	Q4
	Students Above Threshold	32/55	36/55	39/55	40/55
	Students Above Threshold in %	58.18%	65.45%	70.9%	72.72%
	Attainment After comparing with attainment Levels	3	3	3	3
	Average	3	3	3	3



---

# CO Attainment

CO	Direct Attainment	Indirect Attainment	Final Attainment	Target	Gap	Justification
CO1	3	3	3	1.62	1.38	-
CO2	3	3	3	2.37	0.62	-
CO3	3	3	3	2	1	-
CO4	3	3	3	2.87	0.12	-

Average CO Attainment : 3



---

## PO Direct Attainment

POs	PO1	PO2	PO3	PO4	PO5	PO6	PO7	PO8
Weighted Avg	2	2.5	2.75	2	2.25	2.25	2.25	1.75

Average CO Attainment : 3

POs	PO1	PO2	PO3	PO4	PO5	PO6	PO7	PO8
Calculation	2 (3) / 3	2.5 (3) / 3	2.75 (3) / 3	2 (3) / 3	2.25 (3) / 3	2.25 (3) / 3	2.25 (3) / 3	1.75 (3) / 3
Direct Attainment	2.00	2.50	2.75	2.00	2.25	2.25	2.25	1.75



---

## COURSE OVERVIEW | BSW



## COURSE OVERVIEW

BSW | Batch 2025-2028 | FIRST YEAR 2025-2026



Health and Nutrition

( OE 101 )

Course Overview



---

## Vision

To contribute to building a new social order based on human dignity and social justice.

## Mission

**M1:** To work with a preferential option for the vulnerable and exploited, both locally and globally.

**M2:** To build a cadre of young, competent professionals having a global perspective and a strong value base of compassion, personal integrity, moderation, tolerance and self-respect.



---

## Program Outcome (PO)

Sr. No	PO
1	Graduates will critically analyze social realities, understand their changing dynamics, and actively engage in processes that contribute to positive social transformation.
2	They will demonstrate an in-depth understanding of diverse communities, their unique challenges, and systemic inequalities, and advocate for social justice in their professional practice.
3	Graduates will apply appropriate social work methods and strategies to effectively work with individuals, groups, and communities, addressing various social issues.
4	They will embody professional social work values and ethics, ensuring integrity, respect, and accountability in all aspects of their practice.
5	Graduates will develop problem-solving abilities and intervention strategies tailored to the needs of marginalized and vulnerable populations.
6	They will integrate research and evidence-based knowledge to design, implement, and evaluate social work interventions effectively.
7	Graduates will exhibit strong communication skills and the ability to collaborate with multidisciplinary teams to address social challenges holistically.
8	They will demonstrate a commitment to lifelong learning, staying informed about emerging trends and practices in the field of social work.



---

## Course Outcomes

**CO1:** To recall types of nutrients and their sources to enhance foundational knowledge in nutrition.

**CO2:** To understand the bio-psychosocial model of health to foster a holistic approach to well-being.

**CO3:** To analyze factors affecting malnutrition in India and identify key issues in public health.

**CO4:** To apply knowledge in planning low-cost, balanced meals using locally available foods to promote nutritional sustainability.

**CO5:** To evaluate government nutritional programs like ICDS and POSHAN Abhiyan to assess their effectiveness in addressing malnutrition.



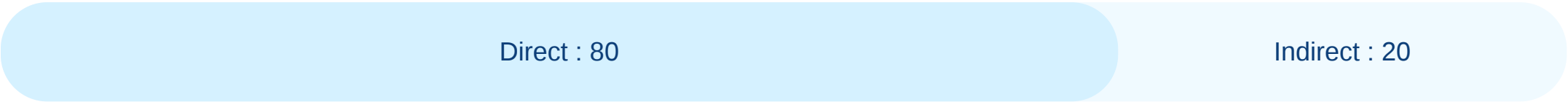
---

## CO - PO - PSO Mapping

CO / PO / PSO	PO1	PO2	PO3	PO4	PO5	PO6	PO7	PO8	Average
CO1	2	1	1	1	1	2	1	2	1.38
CO2	2	3	2	2	2	2	3	2	2.25
CO3	3	3	3	2	3	3	2	2	2.63
CO4	2	2	3	3	3	2	2	2	2.38
CO5	3	3	3	3	3	3	3	3	3.00
Average	2.4	2.4	2.4	2.2	2.4	2.4	2.2	2.2	



# CO Weightages Based on attainment type



## CO targets & Attainment Levels

COs	Target	Direct Attainment levels				Indirect Attainment levels			
		Level 0	Level 1	Level 2	Level 3	Level 0	Level 1	Level 2	Level 3
CO1	1.37	0 - 1	2 - 40	41 - 50	51 - 100	0 - 1	2 - 40	41 - 50	51 - 100
CO2	2.25	0 - 1	2 - 40	41 - 50	51 - 100	0 - 1	2 - 40	41 - 50	51 - 100
CO3	2.62	0 - 1	2 - 40	41 - 50	51 - 100	0 - 1	2 - 40	41 - 50	51 - 100
CO4	2.37	0 - 1	2 - 40	41 - 50	51 - 100	0 - 1	2 - 40	41 - 50	51 - 100
CO5	3	0 - 1	2 - 40	41 - 50	51 - 100	0 - 1	2 - 40	41 - 50	51 - 100



---

## Formative (CIE) Assessments

Sr No	Exam Name	Total Marks	Threshold in %	CO1	CO2	CO3	CO4	CO5	Avg Attainment
1	Unit 1/Group Presentation & MCQ	10	50	3	3	3	3	3	3
2	Unit2/Low Cost Food Preparation	10	50	3	3	3	3	3	3



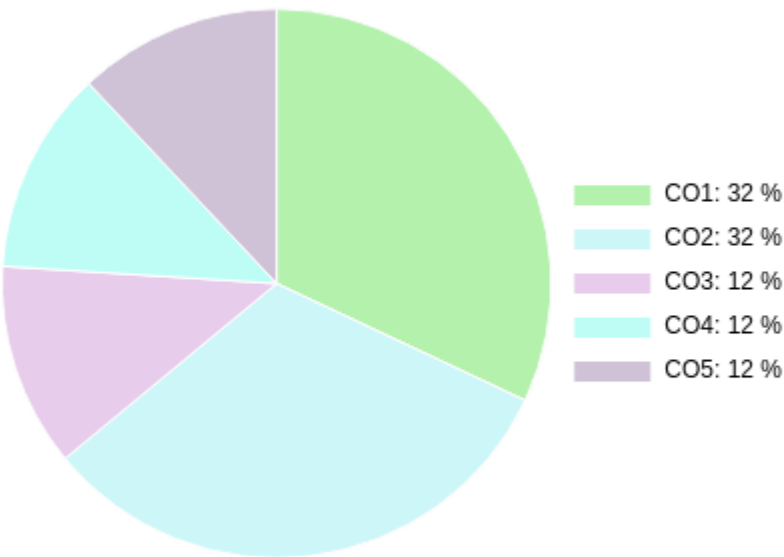
---

## Summative (SEE) Assessments

Sr No	Exam Name	Total Marks	Threshold in %	CO1	CO2	CO3	CO4	CO5	Avg Attainment
3	External Exam	30	50	3	2	3	3	3	2.8



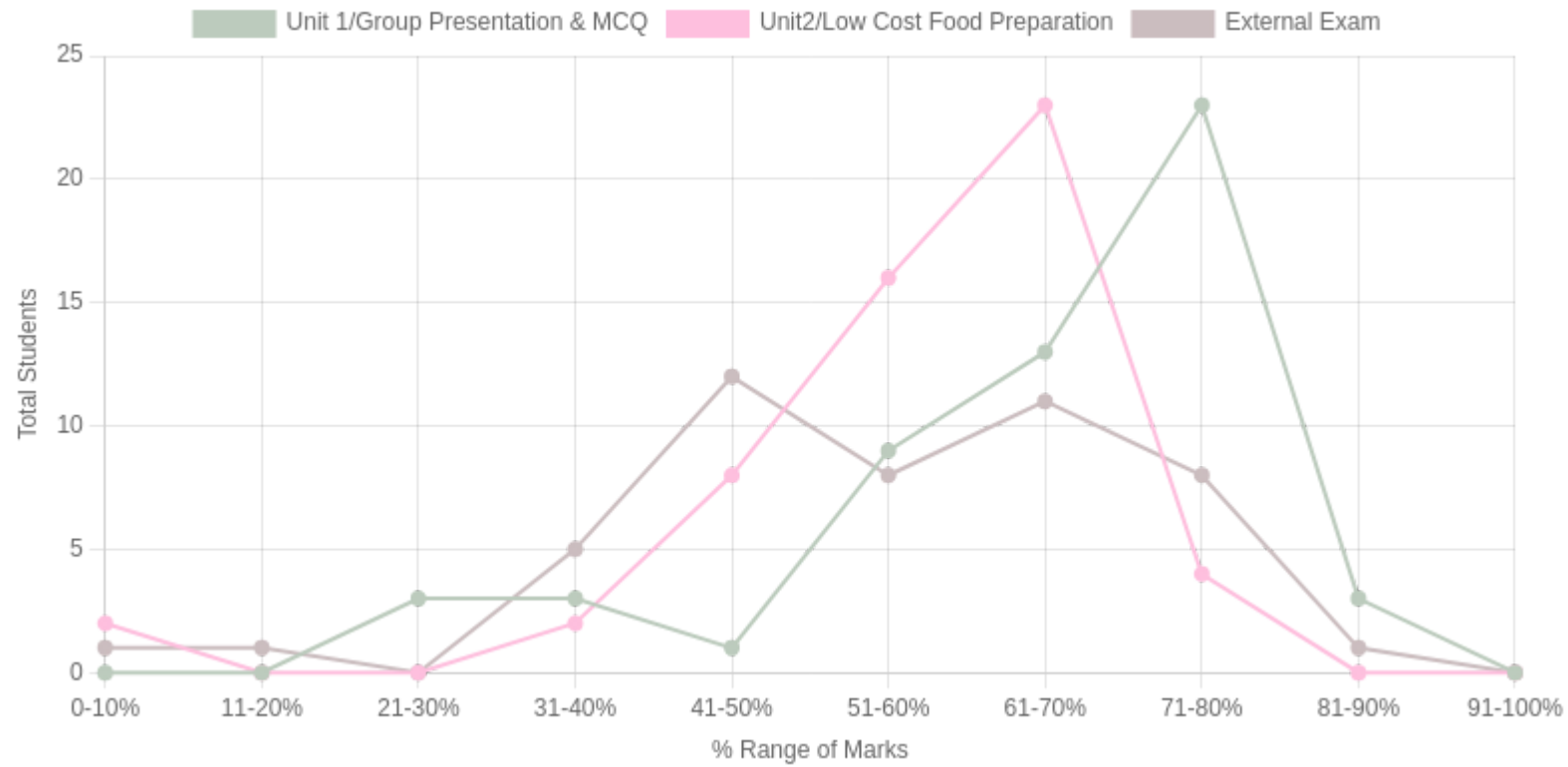
# CO Coverage



COs	CO1	CO2	CO3	CO4	CO5
50	16	16	6	6	6
%	32	32	12	12	12



## Student % wise Distribution





Sr No	Assessment Title	Type	Total Marks	Avg Marks	Threshold in %	No of Students Scoring										Total Students Above Threshold
						0-10%	11-20%	21-30%	31-40%	41-50%	51-60%	61-70%	71-80%	81-90%	91-100%	
1	Unit 1/Group Presentation & MCQ	F	10	6.94	50	0	0	3	3	1	9	13	23	3	0	49
2	Unit2/Low Cost Food Preparation	F	10	6.12	50	2	0	0	2	8	16	23	4	0	0	51
3	External Exam	S	30	13.03	50	1	1	0	5	12	8	11	8	1	0	32



# Indirect Attainment

Feedback Details	CO wise analysis				
<b>Course Exit Survey-BSW-Sem1-2025-2026</b>  <b>Type:</b> Course Feedback <b>Publish Date:</b> 01/12/2025 <b>Last Date:</b> 02/12/2025 <b>Feedback conduction:</b> Backdated <b>Total Students:</b> 55 <b>Responses Received:</b> 47 <b>Consider for Attainment:</b> <input checked="" type="checkbox"/>	COS and Questions	CO1	CO2	CO3	CO4
		Q1	Q2	Q3	Q4
	Students Above Threshold	32/55	36/55	39/55	40/55
	Students Above Threshold in %	58.18%	65.45%	70.9%	72.72%
	Attainment After comparing with attainment Levels	3	3	3	3
	Average	3	3	3	3



---

## CO Attainment

CO	Direct Attainment	Indirect Attainment	Final Attainment	Target	Gap	Justification
CO1	3	3	3	1.37	1.63	-
CO2	2.66	3	2.72	2.25	0.47	-
CO3	3	3	3	2.62	0.37	-
CO4	3	3	3	2.37	0.62	-
CO5	3	0	2.4	3	-0.6	-

Average CO Attainment : 2.82



# PO Direct Attainment

POs	PO1	PO2	PO3	PO4	PO5	PO6	PO7	PO8
Weighted Avg	2.4	2.4	2.4	2.2	2.4	2.4	2.2	2.2

Average CO Attainment : 2.82

POs	PO1	PO2	PO3	PO4	PO5	PO6	PO7	PO8
Calculation	2.4 (2.82) / 3	2.4 (2.82) / 3	2.4 (2.82) / 3	2.2 (2.82) / 3	2.4 (2.82) / 3	2.4 (2.82) / 3	2.2 (2.82) / 3	2.2 (2.82) / 3
Direct Attainment	2.26	2.26	2.26	2.07	2.26	2.26	2.07	2.07



---

## COURSE OVERVIEW | BSW



## COURSE OVERVIEW

BSW | Batch 2025-2028 | FIRST YEAR 2025-2026



Indian Knowledge System in Social Work Profession

( IKS 101 )

Course Overview



---

## Vision

To contribute to building a new social order based on human dignity and social justice.

## Mission

**M1:** To work with a preferential option for the vulnerable and exploited, both locally and globally.

**M2:** To build a cadre of young, competent professionals having a global perspective and a strong value base of compassion, personal integrity, moderation, tolerance and self-respect.



---

## Program Outcome (PO)

Sr. No	PO
1	Graduates will critically analyze social realities, understand their changing dynamics, and actively engage in processes that contribute to positive social transformation.
2	They will demonstrate an in-depth understanding of diverse communities, their unique challenges, and systemic inequalities, and advocate for social justice in their professional practice.
3	Graduates will apply appropriate social work methods and strategies to effectively work with individuals, groups, and communities, addressing various social issues.
4	They will embody professional social work values and ethics, ensuring integrity, respect, and accountability in all aspects of their practice.
5	Graduates will develop problem-solving abilities and intervention strategies tailored to the needs of marginalized and vulnerable populations.
6	They will integrate research and evidence-based knowledge to design, implement, and evaluate social work interventions effectively.
7	Graduates will exhibit strong communication skills and the ability to collaborate with multidisciplinary teams to address social challenges holistically.
8	They will demonstrate a commitment to lifelong learning, staying informed about emerging trends and practices in the field of social work.



---

## Course Outcomes

**CO1:** To remember key stages of Social Work evolution in Western and Indian contexts.

**CO2:** To apply the methodologies of historical figures in contemporary Social Work practice.

**CO3:** To analyze the impact of social reformers like Jyotirao Phule, B.R. Ambedkar, Mahatma Gandhi, etc on Social Work.

**CO4:** To understand philosophical foundations like Mimamsa, Nyaya, and Vedanta and their linkages to Social Work.

**CO5:** To evaluate the relevance of Indian philosophical frameworks in modern Social Work practice.



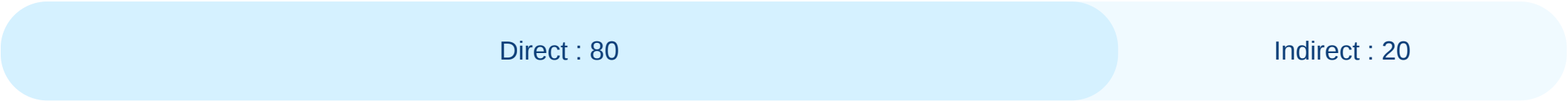
---

## CO - PO - PSO Mapping

CO / PO / PSO	PO1	PO2	PO3	PO4	PO5	PO6	PO7	PO8	Average
CO1	3	2	1	2	1	2	1	2	1.75
CO2	3	3	3	2	3	3	2	2	2.63
CO3	3	3	3	2	3	3	2	2	2.63
CO4	2	2	2	3	2	2	2	2	2.13
CO5	3	3	3	3	3	3	3	3	3.00
Average	2.8	2.6	2.4	2.4	2.4	2.6	2	2.2	



# CO Weightages Based on attainment type



## CO targets & Attainment Levels

COs	Target	Direct Attainment levels				Indirect Attainment levels			
		Level 0	Level 1	Level 2	Level 3	Level 0	Level 1	Level 2	Level 3
CO1	1.75	0 - 1	2 - 40	41 - 50	51 - 100	0 - 1	2 - 40	41 - 50	51 - 100
CO2	2.62	0 - 1	2 - 40	41 - 50	51 - 100	0 - 1	2 - 40	41 - 50	51 - 100
CO3	2.62	0 - 1	2 - 40	41 - 50	51 - 100	0 - 1	2 - 40	41 - 50	51 - 100
CO4	2.12	0 - 1	2 - 40	41 - 50	51 - 100	0 - 1	2 - 40	41 - 50	51 - 100
CO5	3	0 - 1	2 - 40	41 - 50	51 - 100	0 - 1	2 - 40	41 - 50	51 - 100



---

# Formative (CIE) Assessments

Sr No	Exam Name	Total Marks	Threshold in %	CO1	CO2	CO3	CO4	CO5	Avg Attainment
-------	-----------	-------------	----------------	-----	-----	-----	-----	-----	----------------



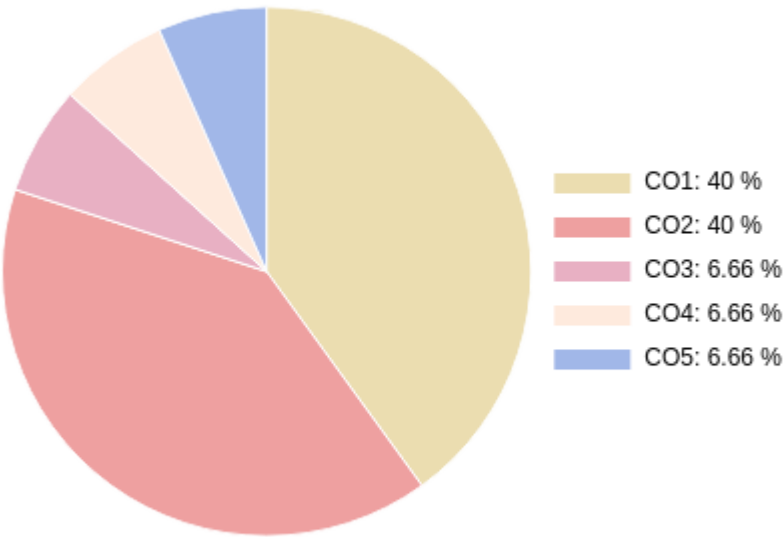
---

## Summative (SEE) Assessments

Sr No	Exam Name	Total Marks	Threshold in %	CO1	CO2	CO3	CO4	CO5	Avg Attainment
1	External Exam	30	50	1	1	3	3	3	2.2



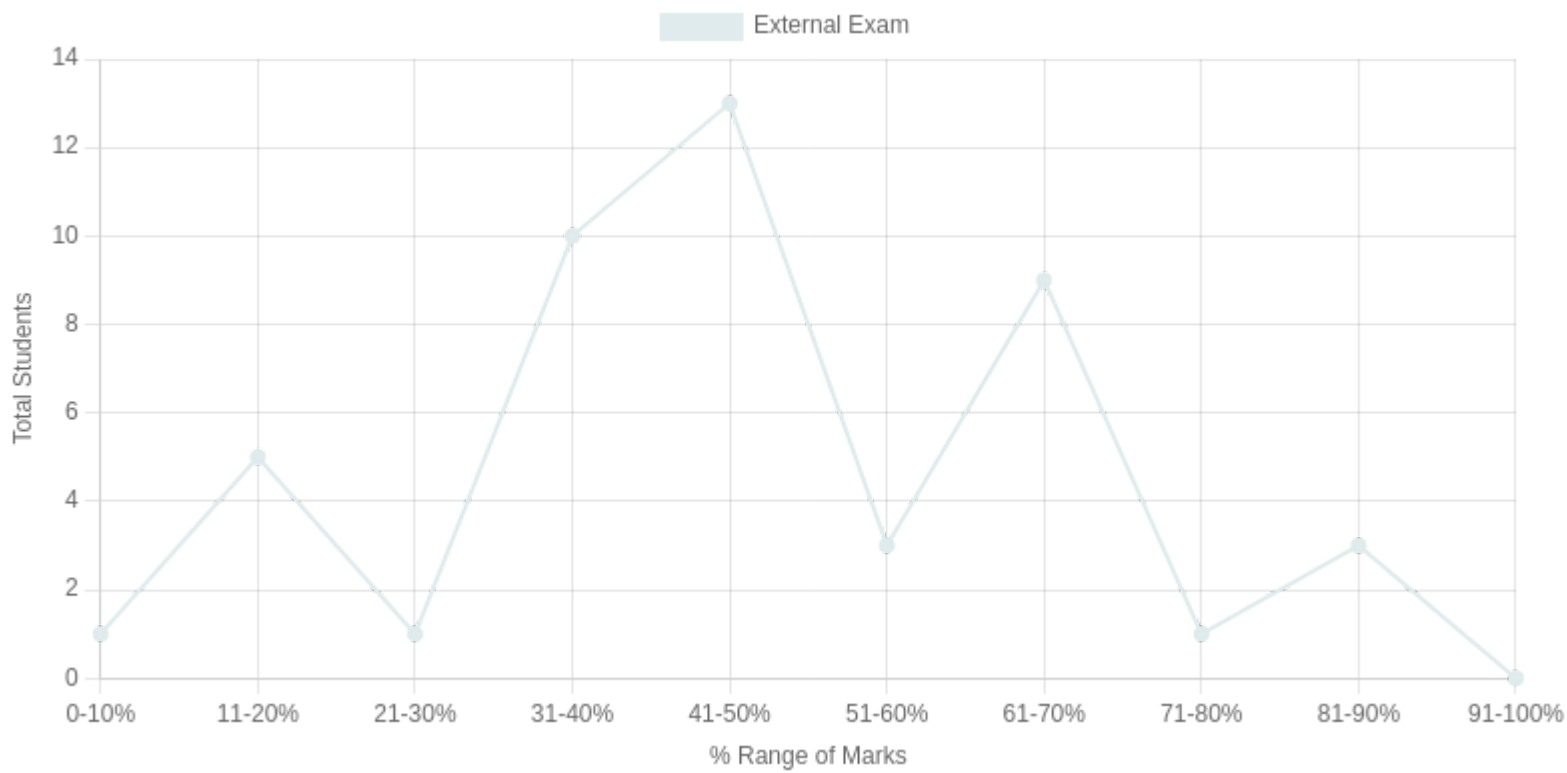
# CO Coverage



COs	CO1	CO2	CO3	CO4	CO5
30	12	12	2	2	2
%	40	40	6.66	6.66	6.66



# Student % wise Distribution





Sr No	Assessment Title	Type	Total Marks	Avg Marks	Threshold in %	No of Students Scoring										Total Students Above Threshold
						0-10%	11-20%	21-30%	31-40%	41-50%	51-60%	61-70%	71-80%	81-90%	91-100%	
1	External Exam	S	30	7.97	50	1	5	1	10	13	3	9	1	3	0	22



# Indirect Attainment

Feedback Details	CO wise analysis				
<b>Course Exit Survey-BSW-Sem1-2025-2026</b>  <b>Type:</b> Course Feedback <b>Publish Date:</b> 01/12/2025 <b>Last Date:</b> 02/12/2025 <b>Feedback conduction:</b> Backdated <b>Total Students:</b> 55 <b>Responses Received:</b> 47 <b>Consider for Attainment:</b> <input checked="" type="checkbox"/>	COS and Questions	CO1	CO2	CO3	CO4
		Q1	Q2	Q3	Q4
	Students Above Threshold	32/55	36/55	39/55	40/55
	Students Above Threshold in %	58.18%	65.45%	70.9%	72.72%
	Attainment After comparing with attainment Levels	3	3	3	3
	Average	3	3	3	3



---

## CO Attainment

CO	Direct Attainment	Indirect Attainment	Final Attainment	Target	Gap	Justification
CO1	1	3	1.4	1.75	-0.35	-
CO2	1	3	1.4	2.62	-1.22	-
CO3	3	3	3	2.62	0.37	-
CO4	3	3	3	2.12	0.87	-
CO5	3	0	2.4	3	-0.6	-

Average CO Attainment : 2.24



# PO Direct Attainment

POs	PO1	PO2	PO3	PO4	PO5	PO6	PO7	PO8
Weighted Avg	2.8	2.6	2.4	2.4	2.4	2.6	2	2.2

Average CO Attainment : 2.24

POs	PO1	PO2	PO3	PO4	PO5	PO6	PO7	PO8
Calculation	2.8 (2.24) / 3	2.6 (2.24) / 3	2.4 (2.24) / 3	2.4 (2.24) / 3	2.4 (2.24) / 3	2.6 (2.24) / 3	2 (2.24) / 3	2.2 (2.24) / 3
Direct Attainment	2.09	1.94	1.79	1.79	1.79	1.94	1.49	1.64



---

## COURSE OVERVIEW | BSW



## COURSE OVERVIEW

BSW | Batch 2025-2028 | FIRST YEAR 2025-2026



Introduction to Psychology

( OE 102 )

Course Overview



---

## Vision

To contribute to building a new social order based on human dignity and social justice.

## Mission

**M1:** To work with a preferential option for the vulnerable and exploited, both locally and globally.

**M2:** To build a cadre of young, competent professionals having a global perspective and a strong value base of compassion, personal integrity, moderation, tolerance and self-respect.



---

## Program Outcome (PO)

Sr. No	PO
1	Graduates will critically analyze social realities, understand their changing dynamics, and actively engage in processes that contribute to positive social transformation.
2	They will demonstrate an in-depth understanding of diverse communities, their unique challenges, and systemic inequalities, and advocate for social justice in their professional practice.
3	Graduates will apply appropriate social work methods and strategies to effectively work with individuals, groups, and communities, addressing various social issues.
4	They will embody professional social work values and ethics, ensuring integrity, respect, and accountability in all aspects of their practice.
5	Graduates will develop problem-solving abilities and intervention strategies tailored to the needs of marginalized and vulnerable populations.
6	They will integrate research and evidence-based knowledge to design, implement, and evaluate social work interventions effectively.
7	Graduates will exhibit strong communication skills and the ability to collaborate with multidisciplinary teams to address social challenges holistically.
8	They will demonstrate a commitment to lifelong learning, staying informed about emerging trends and practices in the field of social work.



---

## Course Outcomes

- CO1:** To demonstrate an understanding of the psychological processes underlying human development by explaining key concepts and principles.
- CO2:** To analyze and differentiate between Psychoanalytic, Behavioristic, and Humanistic theories by comparing their approaches to understanding human behavior.
- CO3:** To apply personality theories to examine issues in human development, including the influence of family, peer groups, and the interaction of nature versus nurture.
- CO4:** To evaluate the role of relationships, parenting, and environmental factors in shaping human behavior by providing evidence-based



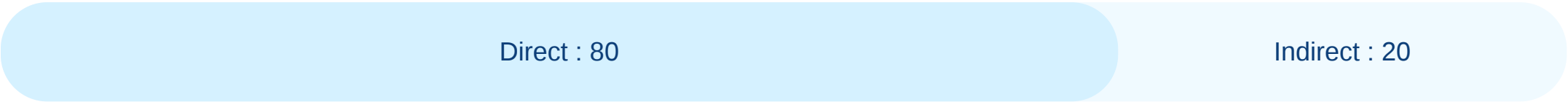
---

## CO - PO - PSO Mapping

CO / PO / PSO	PO1	PO2	PO3	PO4	PO5	PO6	PO7	PO8	Average
CO1	3	2	2	2	1	2	2	3	2.13
CO2	3	3	2	2	2	2	3	2	2.38
CO3	3	3	3	3	3	3	2	3	2.88
CO4	3	3	3	3	3	3	3	3	3.00
Average	3	2.75	2.5	2.5	2.25	2.5	2.5	2.75	



# CO Weightages Based on attainment type



## CO targets & Attainment Levels

COs	Target	Direct Attainment levels				Indirect Attainment levels			
		Level 0	Level 1	Level 2	Level 3	Level 0	Level 1	Level 2	Level 3
CO1	2.12	0 - 1	2 - 40	41 - 50	51 - 100	0 - 1	2 - 40	41 - 50	51 - 100
CO2	2.37	0 - 1	2 - 40	41 - 50	51 - 100	0 - 1	2 - 40	41 - 50	51 - 100
CO3	2.87	0 - 1	2 - 40	41 - 50	51 - 100	0 - 1	2 - 40	41 - 50	51 - 100
CO4	3	0 - 1	2 - 40	41 - 50	51 - 100	0 - 1	2 - 40	41 - 50	51 - 100



---

## Formative (CIE) Assessments

Sr No	Exam Name	Total Marks	Threshold in %	CO1	CO2	CO3	CO4	Avg Attainment
1	Unit 1/Assignment & Test	10	50	3	3	3	3	3
2	Unit 2/Test Written & Oral & Submission of Journal	10	50	3	3	3	3	3



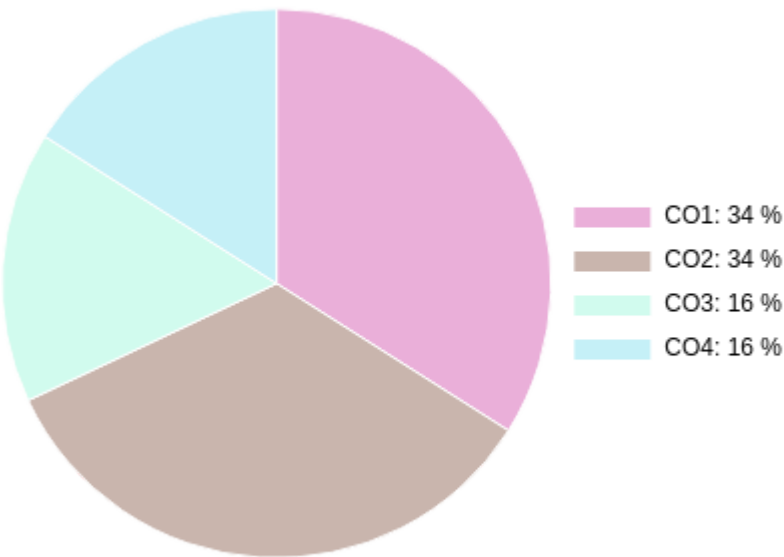
---

## Summative (SEE) Assessments

Sr No	Exam Name	Total Marks	Threshold in %	CO1	CO2	CO3	CO4	Avg Attainment
3	External Exam	30	50	1	2	3	3	2.25



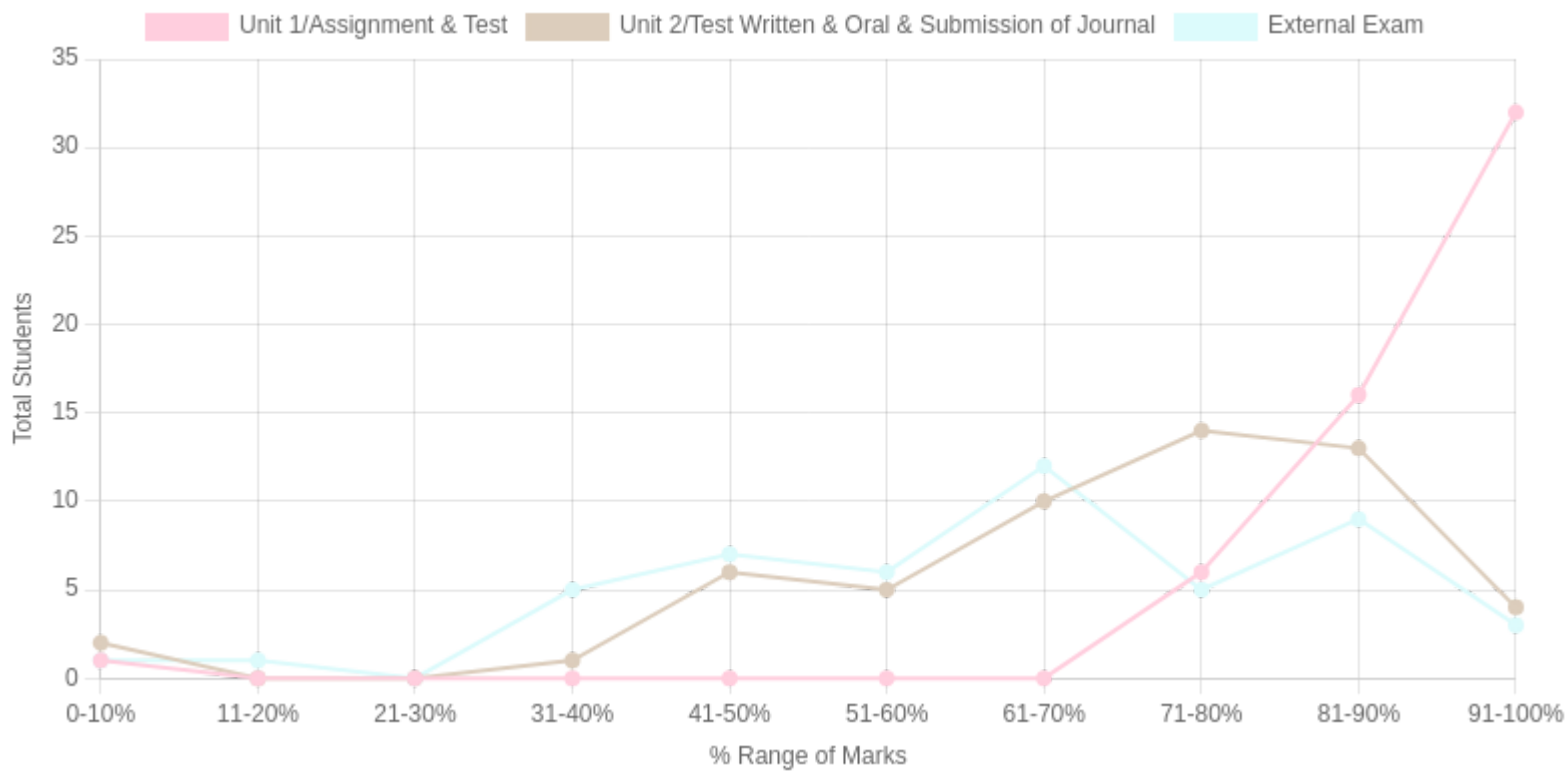
# CO Coverage



COs	CO1	CO2	CO3	CO4
50	17	17	8	8
%	34	34	16	16



# Student % wise Distribution





Sr No	Assessment Title	Type	Total Marks	Avg Marks	Threshold in %	No of Students Scoring										Total Students Above Threshold
						0-10%	11-20%	21-30%	31-40%	41-50%	51-60%	61-70%	71-80%	81-90%	91-100%	
1	Unit 1/Assignment & Test	F	10	9.17	50	1	0	0	0	0	0	0	6	16	32	54
2	Unit 2/Test Written & Oral & Submission of Journal	F	10	7.08	50	2	0	0	1	6	5	10	14	13	4	48
3	External Exam	S	30	11.97	50	1	1	0	5	7	6	12	5	9	3	39



# Indirect Attainment

Feedback Details	CO wise analysis				
<b>Course Exit Survey-BSW-Sem1-2025-2026</b>  <b>Type:</b> Course Feedback <b>Publish Date:</b> 01/12/2025 <b>Last Date:</b> 02/12/2025 <b>Feedback conduction:</b> Backdated <b>Total Students:</b> 55 <b>Responses Received:</b> 47 <b>Consider for Attainment:</b> <input checked="" type="checkbox"/>	COS and Questions	CO1	CO2	CO3	CO4
		Q1	Q2	Q3	Q4
	Students Above Threshold	32/55	36/55	39/55	40/55
	Students Above Threshold in %	58.18%	65.45%	70.9%	72.72%
	Attainment After comparing with attainment Levels	3	3	3	3
	Average	3	3	3	3



---

# CO Attainment

CO	Direct Attainment	Indirect Attainment	Final Attainment	Target	Gap	Justification
CO1	2.33	3	2.46	2.12	0.33	-
CO2	2.66	3	2.72	2.37	0.35	-
CO3	3	3	3	2.87	0.12	-
CO4	3	3	3	3	0	-

Average CO Attainment : 2.79



# PO Direct Attainment

POs	PO1	PO2	PO3	PO4	PO5	PO6	PO7	PO8
Weighted Avg	3	2.75	2.5	2.5	2.25	2.5	2.5	2.75

Average CO Attainment : 2.79

POs	PO1	PO2	PO3	PO4	PO5	PO6	PO7	PO8
Calculation	$3 (2.79) / 3$	$2.75 (2.79) / 3$	$2.5 (2.79) / 3$	$2.5 (2.79) / 3$	$2.25 (2.79) / 3$	$2.5 (2.79) / 3$	$2.5 (2.79) / 3$	$2.75 (2.79) / 3$
Direct Attainment	2.79	2.56	2.32	2.32	2.09	2.32	2.32	2.56



---

## COURSE OVERVIEW | BSW



## COURSE OVERVIEW

BSW | Batch 2025-2028 | FIRST YEAR 2025-2026



Introduction to Social Work Methods

( Major 101 )

Course Overview



---

## Vision

To contribute to building a new social order based on human dignity and social justice.

## Mission

**M1:** To work with a preferential option for the vulnerable and exploited, both locally and globally.

**M2:** To build a cadre of young, competent professionals having a global perspective and a strong value base of compassion, personal integrity, moderation, tolerance and self-respect.



---

## Program Outcome (PO)

Sr. No	PO
1	Graduates will critically analyze social realities, understand their changing dynamics, and actively engage in processes that contribute to positive social transformation.
2	They will demonstrate an in-depth understanding of diverse communities, their unique challenges, and systemic inequalities, and advocate for social justice in their professional practice.
3	Graduates will apply appropriate social work methods and strategies to effectively work with individuals, groups, and communities, addressing various social issues.
4	They will embody professional social work values and ethics, ensuring integrity, respect, and accountability in all aspects of their practice.
5	Graduates will develop problem-solving abilities and intervention strategies tailored to the needs of marginalized and vulnerable populations.
6	They will integrate research and evidence-based knowledge to design, implement, and evaluate social work interventions effectively.
7	Graduates will exhibit strong communication skills and the ability to collaborate with multidisciplinary teams to address social challenges holistically.
8	They will demonstrate a commitment to lifelong learning, staying informed about emerging trends and practices in the field of social work.



---

## Course Outcomes

**CO1:** To understand social work as a profession and its guiding principles for developing a foundational knowledge of the field.

**CO2:** To apply direct intervention skills such as case work , Group work , community organization to effectively address client needs.

**CO3:** To analyze the overview of indirect methods such as research, administration, and social action in social work.

**CO4:** To evaluate the effectiveness of various social work methods in practice to improve service delivery.



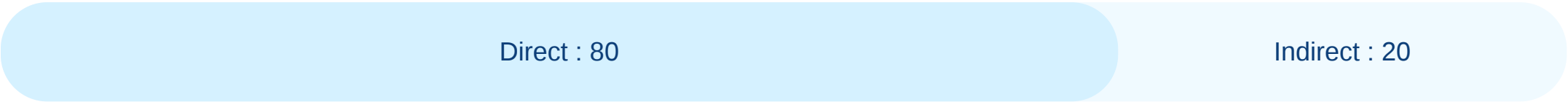
---

## CO - PO - PSO Mapping

CO / PO / PSO	PO1	PO2	PO3	PO4	PO5	PO6	PO7	PO8	Average
CO1	1	2	3	1	1	3	1	2	1.75
CO2	1	2	3	1	1	3	1	2	1.75
CO3	1	2	3	1	1	3	1	2	1.75
CO4	1	2	3	1	1	3	1	2	1.75
Average	1	2	3	1	1	3	1	2	



## CO Weightages Based on attainment type



## CO targets & Attainment Levels

COs	Target	Direct Attainment levels				Indirect Attainment levels			
		Level 0	Level 1	Level 2	Level 3	Level 0	Level 1	Level 2	Level 3
CO1	1.75	0 - 1	2 - 40	41 - 50	51 - 100	0 - 1	2 - 40	41 - 50	51 - 100
CO2	1.75	0 - 1	2 - 40	41 - 50	51 - 100	0 - 1	2 - 40	41 - 50	51 - 100
CO3	1.75	0 - 1	2 - 40	41 - 50	51 - 100	0 - 1	2 - 40	41 - 50	51 - 100
CO4	1.75	0 - 1	2 - 40	41 - 50	51 - 100	0 - 1	2 - 40	41 - 50	51 - 100



---

## Formative (CIE) Assessments

Sr No	Exam Name	Total Marks	Threshold in %	CO1	CO2	CO3	CO4	Avg Attainment
1	Unit 1/MCQ	10	50	3	3	3	3	3
2	Unit 2/Assignment	10	50	3	3	3	3	3



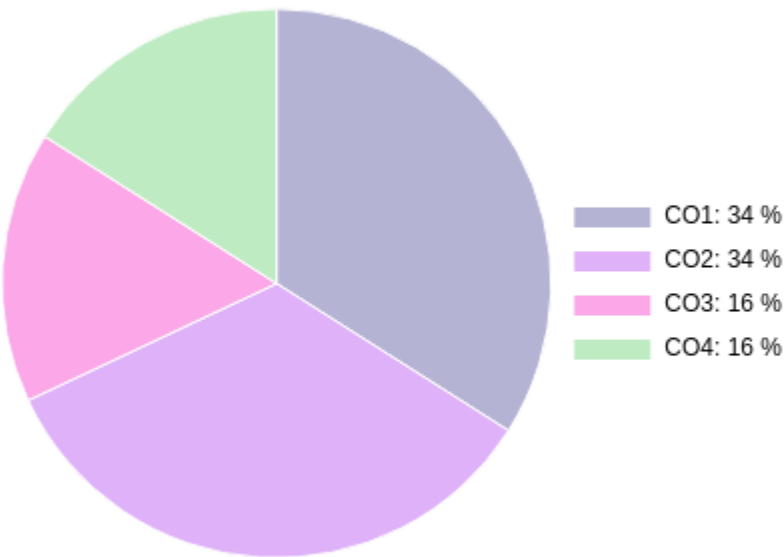
---

## Summative (SEE) Assessments

Sr No	Exam Name	Total Marks	Threshold in %	CO1	CO2	CO3	CO4	Avg Attainment
3	External Exam	30	50	2	3	2	2	2.25



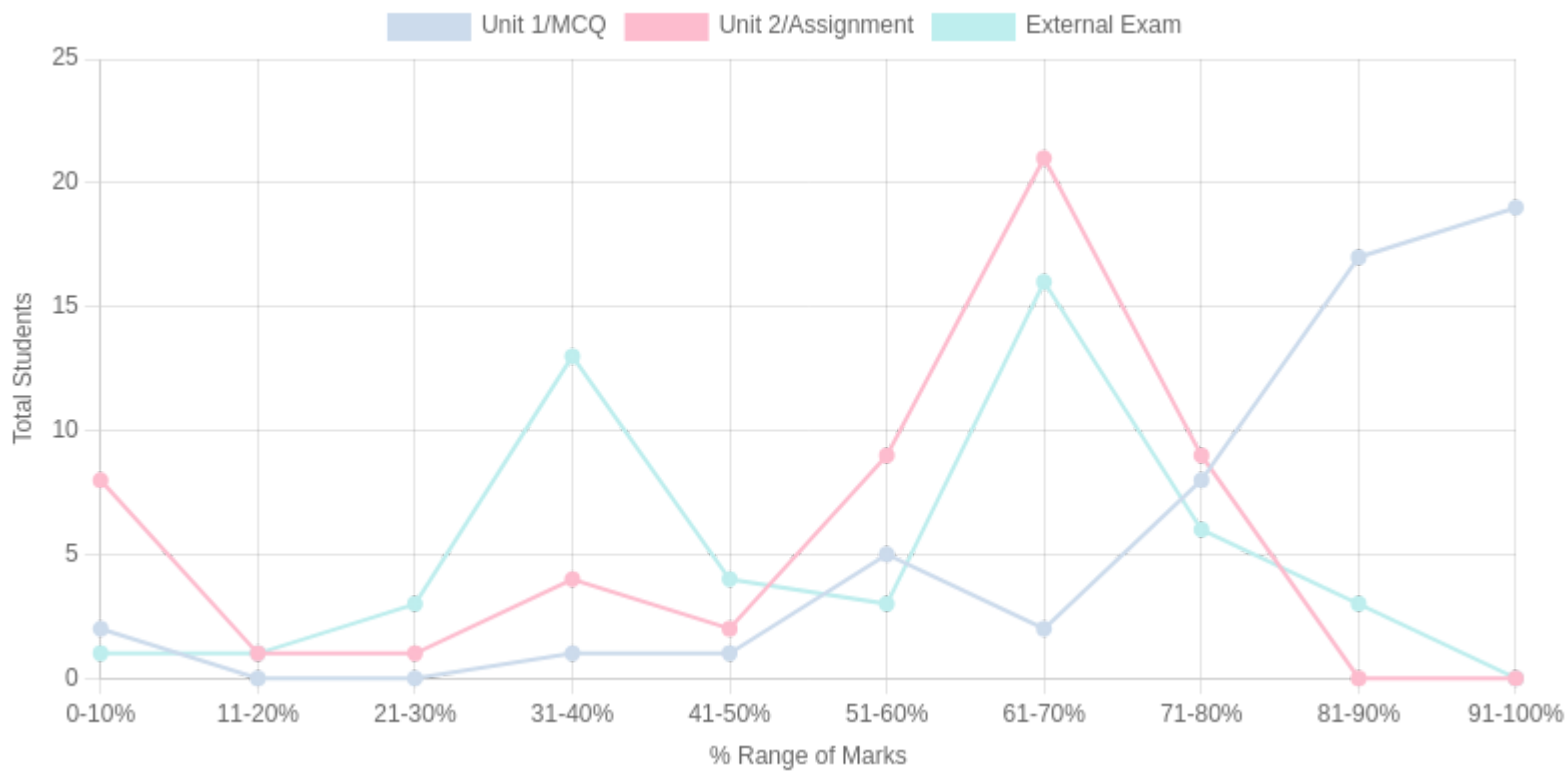
# CO Coverage



COs	CO1	CO2	CO3	CO4
50	17	17	8	8
%	34	34	16	16



# Student % wise Distribution





Sr No	Assessment Title	Type	Total Marks	Avg Marks	Threshold in %	No of Students Scoring										Total Students Above Threshold
						0-10%	11-20%	21-30%	31-40%	41-50%	51-60%	61-70%	71-80%	81-90%	91-100%	
1	Unit 1/MCQ	F	10	8.36	50	2	0	0	1	1	5	2	8	17	19	52
2	Unit 2/Assignment	F	10	5.52	50	8	1	1	4	2	9	21	9	0	0	41
3	External Exam	S	30	12.67	50	1	1	3	13	4	3	16	6	3	0	31



# Indirect Attainment

Feedback Details	CO wise analysis				
<b>Course Exit Survey-BSW-Sem1-2025-2026</b>  <b>Type:</b> Course Feedback <b>Publish Date:</b> 01/12/2025 <b>Last Date:</b> 02/12/2025 <b>Feedback conduction:</b> Backdated <b>Total Students:</b> 55 <b>Responses Received:</b> 47 <b>Consider for Attainment:</b> <input checked="" type="checkbox"/>	COS and Questions	CO1	CO2	CO3	CO4
		Q1	Q2	Q3	Q4
	Students Above Threshold	32/55	36/55	39/55	40/55
	Students Above Threshold in %	58.18%	65.45%	70.9%	72.72%
	Attainment After comparing with attainment Levels	3	3	3	3
	Average	3	3	3	3



---

## CO Attainment

CO	Direct Attainment	Indirect Attainment	Final Attainment	Target	Gap	Justification
CO1	2.66	3	2.72	1.75	0.97	-
CO2	3	3	3	1.75	1.25	-
CO3	2.66	3	2.72	1.75	0.97	-
CO4	2.66	3	2.72	1.75	0.97	-

Average CO Attainment : 2.79



# PO Direct Attainment

POs	PO1	PO2	PO3	PO4	PO5	PO6	PO7	PO8
Weighted Avg	1	2	3	1	1	3	1	2

Average CO Attainment : 2.79

POs	PO1	PO2	PO3	PO4	PO5	PO6	PO7	PO8
Calculation	1 (2.79) / 3	2 (2.79) / 3	3 (2.79) / 3	1 (2.79) / 3	1 (2.79) / 3	3 (2.79) / 3	1 (2.79) / 3	2 (2.79) / 3
Direct Attainment	0.93	1.86	2.79	0.93	0.93	2.79	0.93	1.86



---

## COURSE OVERVIEW | BSW



## COURSE OVERVIEW

BSW | Batch 2025-2028 | FIRST YEAR 2025-2026



Orientation to Field Practicum

( VSC 101 )

Course Overview



---

## Vision

To contribute to building a new social order based on human dignity and social justice.

## Mission

**M1:** To work with a preferential option for the vulnerable and exploited, both locally and globally.

**M2:** To build a cadre of young, competent professionals having a global perspective and a strong value base of compassion, personal integrity, moderation, tolerance and self-respect.



---

## Program Outcome (PO)

Sr. No	PO
1	Graduates will critically analyze social realities, understand their changing dynamics, and actively engage in processes that contribute to positive social transformation.
2	They will demonstrate an in-depth understanding of diverse communities, their unique challenges, and systemic inequalities, and advocate for social justice in their professional practice.
3	Graduates will apply appropriate social work methods and strategies to effectively work with individuals, groups, and communities, addressing various social issues.
4	They will embody professional social work values and ethics, ensuring integrity, respect, and accountability in all aspects of their practice.
5	Graduates will develop problem-solving abilities and intervention strategies tailored to the needs of marginalized and vulnerable populations.
6	They will integrate research and evidence-based knowledge to design, implement, and evaluate social work interventions effectively.
7	Graduates will exhibit strong communication skills and the ability to collaborate with multidisciplinary teams to address social challenges holistically.
8	They will demonstrate a commitment to lifelong learning, staying informed about emerging trends and practices in the field of social work.



---

## Course Outcomes

**CO1:** Remember key concepts and principles of fieldwork in social work.

**CO2:** Understand the different responsibilities and functions of a social worker in diverse environments.

**CO3:** Applying the ability to conduct non-participatory observations and fact-finding tools in a social work setting.

**CO4:** Create a community map.

**CO5:** Apply basic skills and techniques in need assessment and documentation of Fieldwork experiences.



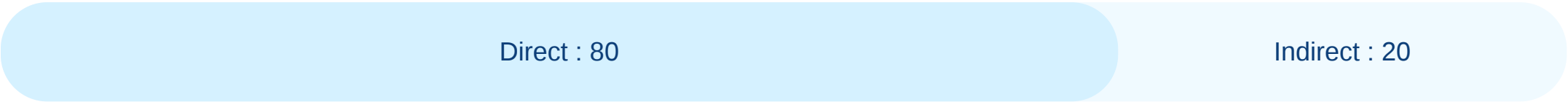
---

## CO - PO - PSO Mapping

CO / PO / PSO	PO1	PO2	PO3	PO4	PO5	PO6	PO7	PO8	Average
CO1	2	1	1	1	1	2	1	2	1.38
CO2	2	3	2	2	2	2	3	2	2.25
CO3	3	2	3	2	3	3	2	2	2.50
CO4	2	2	3	2	3	2	2	2	2.25
CO5	3	3	3	3	3	3	3	3	3.00
Average	2.4	2.2	2.4	2	2.4	2.4	2.2	2.2	



# CO Weightages Based on attainment type



## CO targets & Attainment Levels

COs	Target	Direct Attainment levels				Indirect Attainment levels			
		Level 0	Level 1	Level 2	Level 3	Level 0	Level 1	Level 2	Level 3
CO1	1.37	0 - 1	2 - 40	41 - 50	51 - 100	0 - 1	2 - 40	41 - 50	51 - 100
CO2	2.25	0 - 1	2 - 40	41 - 50	51 - 100	0 - 1	2 - 40	41 - 50	51 - 100
CO3	2.5	0 - 1	2 - 40	41 - 50	51 - 100	0 - 1	2 - 40	41 - 50	51 - 100
CO4	2.25	0 - 1	2 - 40	41 - 50	51 - 100	0 - 1	2 - 40	41 - 50	51 - 100
CO5	3	0 - 1	2 - 40	41 - 50	51 - 100	0 - 1	2 - 40	41 - 50	51 - 100



---

## Formative (CIE) Assessments

Sr No	Exam Name	Total Marks	Threshold in %	CO1	CO2	CO3	CO4	CO5	Avg Attainment
1	Unit 1/Create an IEC	10	50	3	3	3	3	3	3
2	Unit 2/Writeup of Non-Participator	10	50	3	3	3	3	3	3



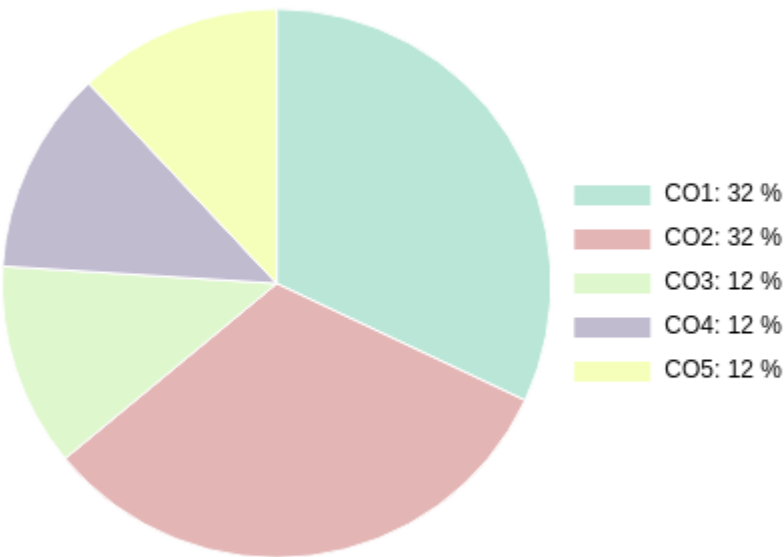
---

## Summative (SEE) Assessments

Sr No	Exam Name	Total Marks	Threshold in %	CO1	CO2	CO3	CO4	CO5	Avg Attainment
3	External Exam	30	50	1	1	3	3	3	2.2



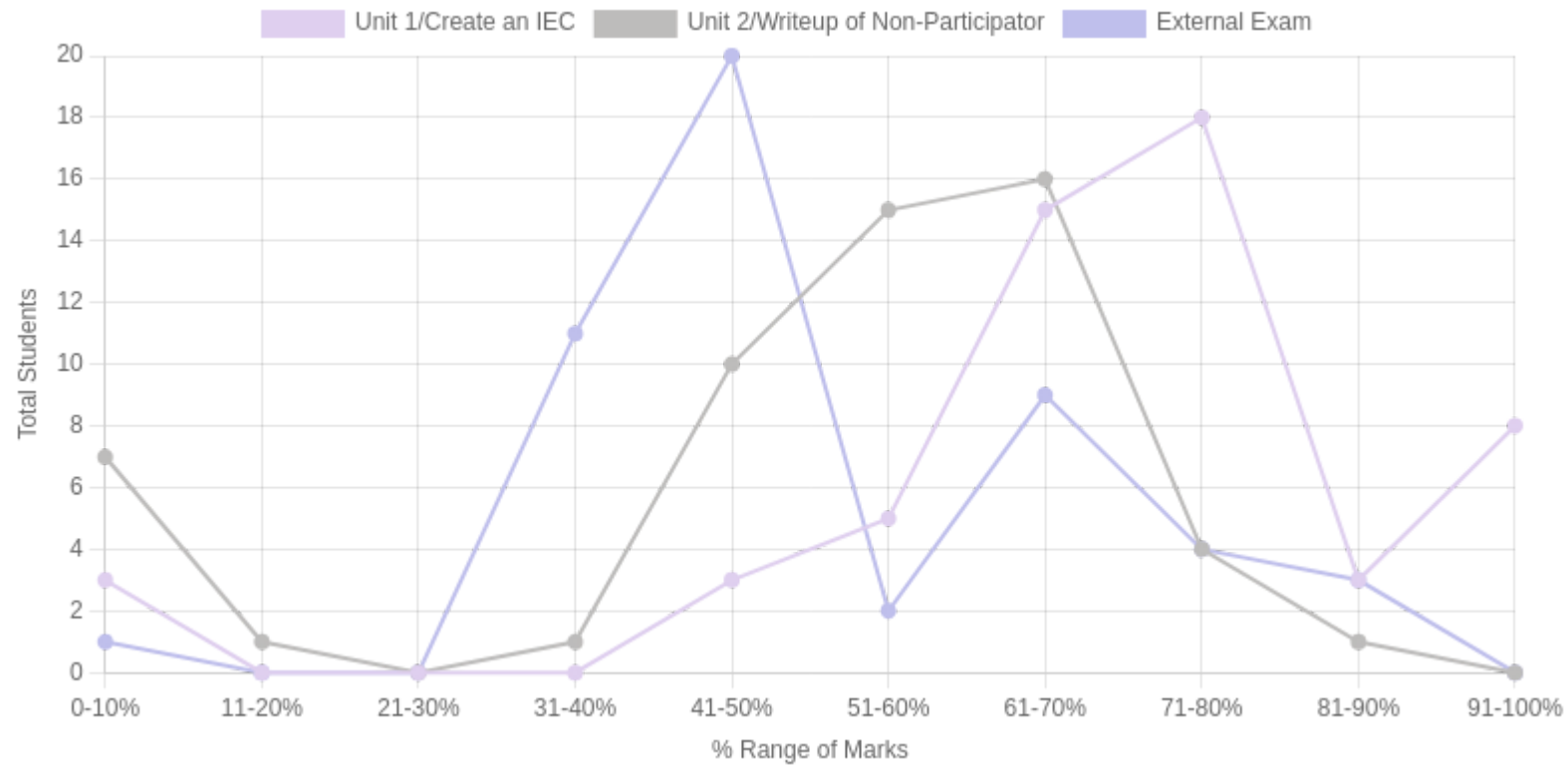
# CO Coverage



COs	CO1	CO2	CO3	CO4	CO5
50	16	16	6	6	6
%	32	32	12	12	12



## Student % wise Distribution





Sr No	Assessment Title	Type	Total Marks	Avg Marks	Threshold in %	No of Students Scoring										Total Students Above Threshold
						0-10%	11-20%	21-30%	31-40%	41-50%	51-60%	61-70%	71-80%	81-90%	91-100%	
1	Unit 1/Create an IEC	F	10	7.29	50	3	0	0	0	3	5	15	18	3	8	52
2	Unit 2/Writeup of Non-Participator	F	10	5.43	50	7	1	0	1	10	15	16	4	1	0	46
3	External Exam	S	30	5.98	50	1	0	0	11	20	2	9	4	3	0	34



# Indirect Attainment

Feedback Details	CO wise analysis				
<b>Course Exit Survey-BSW-Sem1-2025-2026</b>  <b>Type:</b> Course Feedback <b>Publish Date:</b> 01/12/2025 <b>Last Date:</b> 02/12/2025 <b>Feedback conduction:</b> Backdated <b>Total Students:</b> 55 <b>Responses Received:</b> 47 <b>Consider for Attainment:</b> <input checked="" type="checkbox"/>	COS and Questions	CO1	CO2	CO3	CO4
		Q1	Q2	Q3	Q4
	Students Above Threshold	32/55	36/55	39/55	40/55
	Students Above Threshold in %	58.18%	65.45%	70.9%	72.72%
	Attainment After comparing with attainment Levels	3	3	3	3
	Average	3	3	3	3



---

# CO Attainment

CO	Direct Attainment	Indirect Attainment	Final Attainment	Target	Gap	Justification
CO1	2.33	3	2.46	1.37	1.08	-
CO2	2.33	3	2.46	2.25	0.2	-
CO3	3	3	3	2.5	0.5	-
CO4	3	3	3	2.25	0.75	-
CO5	3	0	2.4	3	-0.6	-

Average CO Attainment : 2.66



# PO Direct Attainment

POs	PO1	PO2	PO3	PO4	PO5	PO6	PO7	PO8
Weighted Avg	2.4	2.2	2.4	2	2.4	2.4	2.2	2.2

Average CO Attainment : 2.66

POs	PO1	PO2	PO3	PO4	PO5	PO6	PO7	PO8
Calculation	2.4 (2.66) / 3	2.2 (2.66) / 3	2.4 (2.66) / 3	2 (2.66) / 3	2.4 (2.66) / 3	2.4 (2.66) / 3	2.2 (2.66) / 3	2.2 (2.66) / 3
Direct Attainment	2.13	1.95	2.13	1.77	2.13	2.13	1.95	1.95



---

## COURSE OVERVIEW | BSW



## COURSE OVERVIEW

BSW | Batch 2025-2028 | FIRST YEAR 2025-2026



Professional Values and Ethics

( VEC 101 )

Course Overview



---

## Vision

To contribute to building a new social order based on human dignity and social justice.

## Mission

**M1:** To work with a preferential option for the vulnerable and exploited, both locally and globally.

**M2:** To build a cadre of young, competent professionals having a global perspective and a strong value base of compassion, personal integrity, moderation, tolerance and self-respect.



---

## Program Outcome (PO)

Sr. No	PO
1	Graduates will critically analyze social realities, understand their changing dynamics, and actively engage in processes that contribute to positive social transformation.
2	They will demonstrate an in-depth understanding of diverse communities, their unique challenges, and systemic inequalities, and advocate for social justice in their professional practice.
3	Graduates will apply appropriate social work methods and strategies to effectively work with individuals, groups, and communities, addressing various social issues.
4	They will embody professional social work values and ethics, ensuring integrity, respect, and accountability in all aspects of their practice.
5	Graduates will develop problem-solving abilities and intervention strategies tailored to the needs of marginalized and vulnerable populations.
6	They will integrate research and evidence-based knowledge to design, implement, and evaluate social work interventions effectively.
7	Graduates will exhibit strong communication skills and the ability to collaborate with multidisciplinary teams to address social challenges holistically.
8	They will demonstrate a commitment to lifelong learning, staying informed about emerging trends and practices in the field of social work.



---

## Course Outcomes

- CO1:** To remember the concept of profession and attributes of a profession, broadening the student's foundational knowledge in social work.
- CO2:** To understand the transition from occupation to profession, enabling students to appreciate the significance of professional identity in social work.
- CO3:** To analyze ethical dilemmas in real-world scenarios, enhancing critical thinking and ethical reasoning skills in students.
- CO4:** To evaluate the ethical defensibility of specific actions in field practice, fostering students' ability to make sound ethical decisions.
- CO5:** To apply ethical frameworks like IFSW guidelines to decision-making, equipping students with practical skills for their professional practice.



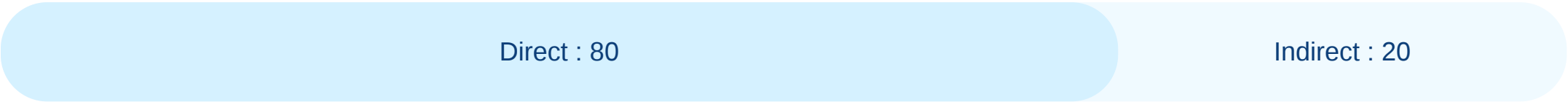
---

## CO - PO - PSO Mapping

CO / PO / PSO	PO1	PO2	PO3	PO4	PO5	PO6	PO7	PO8	Average
CO1	3	2	1	3	1	1	2	3	2.00
CO2	3	3	2	2	2	2	2	3	2.38
CO3	3	3	3	3	3	3	3	3	3.00
CO4	3	3	3	3	3	3	3	3	3.00
CO5	3	3	3	3	3	3	3	3	3.00
Average	3	2.8	2.4	2.8	2.4	2.4	2.6	3	



# CO Weightages Based on attainment type



## CO targets & Attainment Levels

COs	Target	Direct Attainment levels				Indirect Attainment levels			
		Level 0	Level 1	Level 2	Level 3	Level 0	Level 1	Level 2	Level 3
CO1	2	0 - 1	2 - 40	41 - 50	51 - 100	0 - 1	2 - 40	41 - 50	51 - 100
CO2	2.37	0 - 1	2 - 40	41 - 50	51 - 100	0 - 1	2 - 40	41 - 50	51 - 100
CO3	3	0 - 1	2 - 40	41 - 50	51 - 100	0 - 1	2 - 40	41 - 50	51 - 100
CO4	3	0 - 1	2 - 40	41 - 50	51 - 100	0 - 1	2 - 40	41 - 50	51 - 100
CO5	3	0 - 1	2 - 40	41 - 50	51 - 100	0 - 1	2 - 40	41 - 50	51 - 100



---

# Formative (CIE) Assessments

Sr No	Exam Name	Total Marks	Threshold in %	CO1	CO2	CO3	CO4	CO5	Avg Attainment
-------	-----------	-------------	----------------	-----	-----	-----	-----	-----	----------------



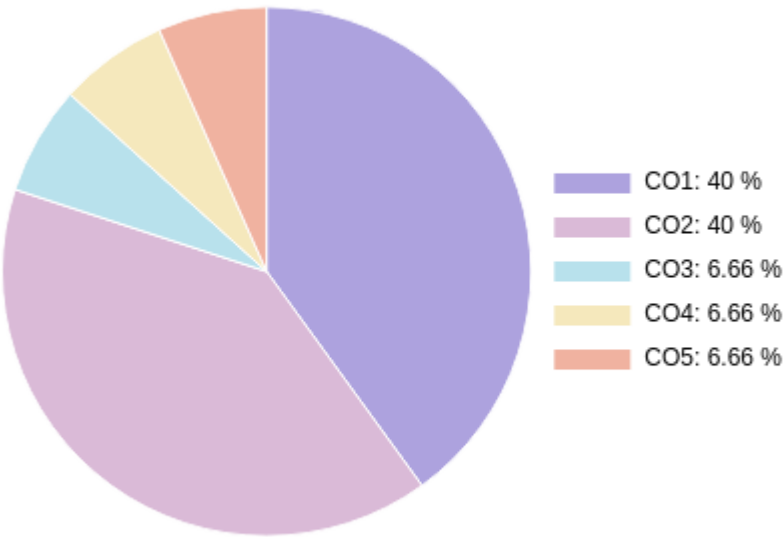
---

## Summative (SEE) Assessments

Sr No	Exam Name	Total Marks	Threshold in %	CO1	CO2	CO3	CO4	CO5	Avg Attainment
1	External Exam	30	50	3	1	3	3	3	2.6



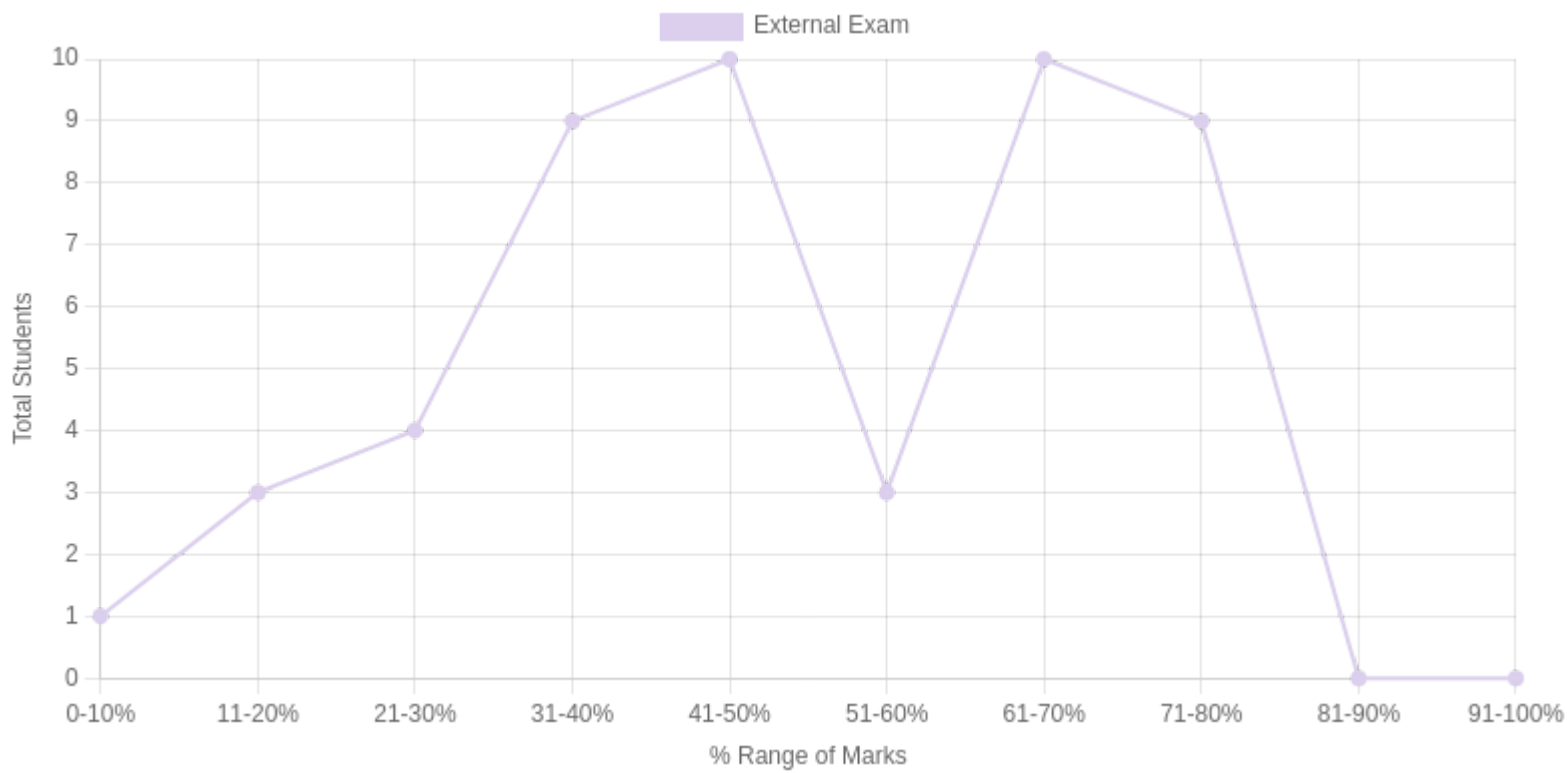
# CO Coverage



COs	CO1	CO2	CO3	CO4	CO5
30	12	12	2	2	2
%	40	40	6.66	6.66	6.66



# Student % wise Distribution





Sr No	Assessment Title	Type	Total Marks	Avg Marks	Threshold in %	No of Students Scoring										Total Students Above Threshold
						0-10%	11-20%	21-30%	31-40%	41-50%	51-60%	61-70%	71-80%	81-90%	91-100%	
1	External Exam	S	30	12.55	50	1	3	4	9	10	3	10	9	0	0	28



# Indirect Attainment

Feedback Details	CO wise analysis				
<b>Course Exit Survey-BSW-Sem1-2025-2026</b>  <b>Type:</b> Course Feedback <b>Publish Date:</b> 01/12/2025 <b>Last Date:</b> 02/12/2025 <b>Feedback conduction:</b> Backdated <b>Total Students:</b> 55 <b>Responses Received:</b> 47 <b>Consider for Attainment:</b> <input checked="" type="checkbox"/>	COS and Questions	CO1	CO2	CO3	CO4
		Q1	Q2	Q3	Q4
	Students Above Threshold	32/55	36/55	39/55	40/55
	Students Above Threshold in %	58.18%	65.45%	70.9%	72.72%
	Attainment After comparing with attainment Levels	3	3	3	3
	Average	3	3	3	3



---

# CO Attainment

CO	Direct Attainment	Indirect Attainment	Final Attainment	Target	Gap	Justification
CO1	3	3	3	2	1	-
CO2	1	3	1.4	2.37	-0.97	-
CO3	3	3	3	3	0	-
CO4	3	3	3	3	0	-
CO5	3	0	2.4	3	-0.6	-

Average CO Attainment : 2.56



## PO Direct Attainment

POs	PO1	PO2	PO3	PO4	PO5	PO6	PO7	PO8
Weighted Avg	3	2.8	2.4	2.8	2.4	2.4	2.6	3

Average CO Attainment : 2.56

POs	PO1	PO2	PO3	PO4	PO5	PO6	PO7	PO8
Calculation	$3 (2.56) / 3$	$2.8 (2.56) / 3$	$2.4 (2.56) / 3$	$2.8 (2.56) / 3$	$2.4 (2.56) / 3$	$2.4 (2.56) / 3$	$2.6 (2.56) / 3$	$3 (2.56) / 3$
Direct Attainment	2.56	2.39	2.05	2.39	2.05	2.05	2.22	2.56



---

## COURSE OVERVIEW | BSW



## COURSE OVERVIEW

BSW | Batch 2025-2028 | FIRST YEAR 2025-2026



Wellness and Yoga

( CC 101 )

Course Overview



---

## Vision

To contribute to building a new social order based on human dignity and social justice.

## Mission

**M1:** To work with a preferential option for the vulnerable and exploited, both locally and globally.

**M2:** To build a cadre of young, competent professionals having a global perspective and a strong value base of compassion, personal integrity, moderation, tolerance and self-respect.



---

## Program Outcome (PO)

Sr. No	PO
1	Graduates will critically analyze social realities, understand their changing dynamics, and actively engage in processes that contribute to positive social transformation.
2	They will demonstrate an in-depth understanding of diverse communities, their unique challenges, and systemic inequalities, and advocate for social justice in their professional practice.
3	Graduates will apply appropriate social work methods and strategies to effectively work with individuals, groups, and communities, addressing various social issues.
4	They will embody professional social work values and ethics, ensuring integrity, respect, and accountability in all aspects of their practice.
5	Graduates will develop problem-solving abilities and intervention strategies tailored to the needs of marginalized and vulnerable populations.
6	They will integrate research and evidence-based knowledge to design, implement, and evaluate social work interventions effectively.
7	Graduates will exhibit strong communication skills and the ability to collaborate with multidisciplinary teams to address social challenges holistically.
8	They will demonstrate a commitment to lifelong learning, staying informed about emerging trends and practices in the field of social work.



---

## Course Outcomes

**CO1:** To remember the eight dimensions of wellness and definitions of yoga for foundational knowledge in personal health practices.

**CO2:** To understand the linkage between lifestyle diseases, stressors, and wellness to promote informed health choices.

**CO3:** To analyze the impact of unhealthy lifestyle choices and substance abuse on wellness for better health strategies.

**CO4:** To evaluate the effectiveness of yogic principles and wellness strategies in community settings for improved public health.

**CO5:** To apply yoga practices, stress management techniques, and relaxation methods for improved personal and community wellness.



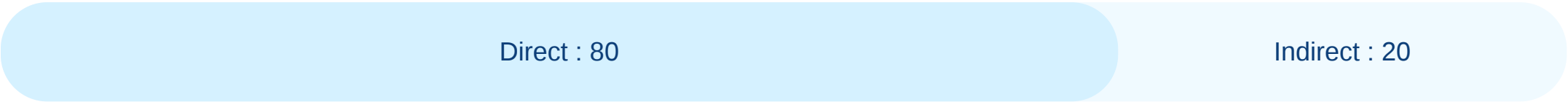
---

## CO - PO - PSO Mapping

CO / PO / PSO	PO1	PO2	PO3	PO4	PO5	PO6	PO7	PO8	Average
CO1	3	2	1	2	1	1	2	3	1.88
CO2	3	3	2	2	2	2	2	3	2.38
CO3	3	3	3	2	3	3	2	3	2.75
CO4	3	3	3	3	3	3	3	3	3.00
CO5	3	3	3	3	3	2	3	3	2.88
Average	3	2.8	2.4	2.4	2.4	2.2	2.4	3	



# CO Weightages Based on attainment type



## CO targets & Attainment Levels

COs	Target	Direct Attainment levels				Indirect Attainment levels			
		Level 0	Level 1	Level 2	Level 3	Level 0	Level 1	Level 2	Level 3
CO1	1.87	0 - 1	2 - 40	41 - 50	51 - 100	0 - 1	2 - 40	41 - 50	51 - 100
CO2	2.37	0 - 1	2 - 40	41 - 50	51 - 100	0 - 1	2 - 40	41 - 50	51 - 100
CO3	2.75	0 - 1	2 - 40	41 - 50	51 - 100	0 - 1	2 - 40	41 - 50	51 - 100
CO4	3	0 - 1	2 - 40	41 - 50	51 - 100	0 - 1	2 - 40	41 - 50	51 - 100
CO5	2.87	0 - 1	2 - 40	41 - 50	51 - 100	0 - 1	2 - 40	41 - 50	51 - 100



---

## Formative (CIE) Assessments

Sr No	Exam Name	Total Marks	Threshold in %	CO1	CO2	CO3	CO4	CO5	Avg Attainment
1	Unit 1/Class Test & Presentation	10	50	3	3	3	3	3	3
2	Unit 2/Presentation & Oral Test	10	50	3	3	3	3	3	3



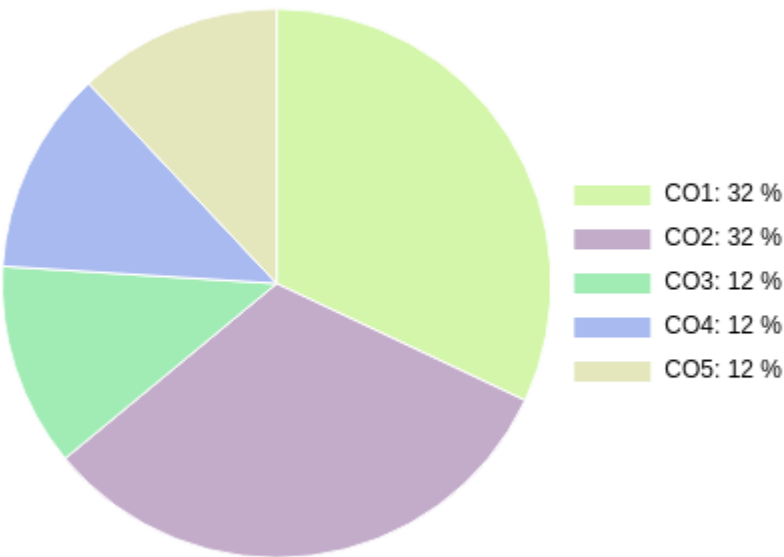
---

## Summative (SEE) Assessments

Sr No	Exam Name	Total Marks	Threshold in %	CO1	CO2	CO3	CO4	CO5	Avg Attainment
3	External Exam	30	50	3	3	3	3	3	3



# CO Coverage



COs	CO1	CO2	CO3	CO4	CO5
50	16	16	6	6	6
%	32	32	12	12	12



## Student % wise Distribution





Sr No	Assessment Title	Type	Total Marks	Avg Marks	Threshold in %	No of Students Scoring										Total Students Above Threshold
						0-10%	11-20%	21-30%	31-40%	41-50%	51-60%	61-70%	71-80%	81-90%	91-100%	
1	Unit 1/Class Test & Presentation	F	10	7.49	50	0	0	0	1	2	12	8	18	14	0	54
2	Unit 2/Presentation & Oral Test	F	10	6.05	50	2	0	0	8	15	6	5	16	3	0	43
3	External Exam	S	30	13.87	50	1	0	1	4	7	14	12	11	0	0	41



# Indirect Attainment

Feedback Details	CO wise analysis				
<b>Course Exit Survey-BSW-Sem1-2025-2026</b>  <b>Type:</b> Course Feedback <b>Publish Date:</b> 01/12/2025 <b>Last Date:</b> 02/12/2025 <b>Feedback conduction:</b> Backdated <b>Total Students:</b> 55 <b>Responses Received:</b> 47 <b>Consider for Attainment:</b> <input checked="" type="checkbox"/>	COS and Questions	CO1	CO2	CO3	CO4
		Q1	Q2	Q3	Q4
	Students Above Threshold	32/55	36/55	39/55	40/55
	Students Above Threshold in %	58.18%	65.45%	70.9%	72.72%
	Attainment After comparing with attainment Levels	3	3	3	3
	Average	3	3	3	3



---

## CO Attainment

CO	Direct Attainment	Indirect Attainment	Final Attainment	Target	Gap	Justification
CO1	3	3	3	1.87	1.12	-
CO2	3	3	3	2.37	0.62	-
CO3	3	3	3	2.75	0.25	-
CO4	3	3	3	3	0	-
CO5	3	0	2.4	2.87	-0.47	-

Average CO Attainment : 2.88



# PO Direct Attainment

POs	PO1	PO2	PO3	PO4	PO5	PO6	PO7	PO8
Weighted Avg	3	2.8	2.4	2.4	2.4	2.2	2.4	3

Average CO Attainment : 2.88

POs	PO1	PO2	PO3	PO4	PO5	PO6	PO7	PO8
Calculation	$3 (2.88) / 3$	$2.8 (2.88) / 3$	$2.4 (2.88) / 3$	$2.4 (2.88) / 3$	$2.4 (2.88) / 3$	$2.2 (2.88) / 3$	$2.4 (2.88) / 3$	$3 (2.88) / 3$
Direct Attainment	2.88	2.69	2.30	2.30	2.30	2.11	2.30	2.88



---

## COURSE OVERVIEW | BSW



## Course Exit Survey – Dashboard Summary

**Program:** BSW

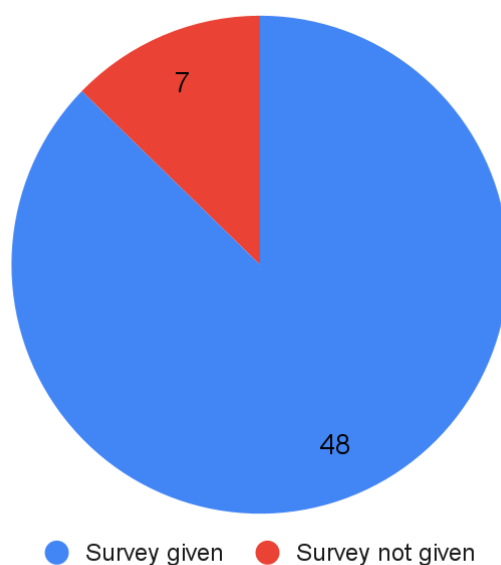
**Semester and Year:** Sem 1 AY 2025-2026

**Course Code:** SEC 101

**Course Name:** Environment Studies

### Response Analysis

Total Students: 55



A total of **48 students** responded. The feedback shows **strong conceptual clarity** and **moderately strong application skills**, with some scope for strengthening higher-order learning and confidence in real-world environmental action.

### Questions

Q1: I was able to remember terms, concepts, definitions and communicate clearly and competently on matters of environmental concern.

Q2: I was able to understand and explain the types of pollution, sources, effects and ways to prevent these forms of pollution as well as discuss the misuse of natural resources, and its implications and identify interventions to address the same.

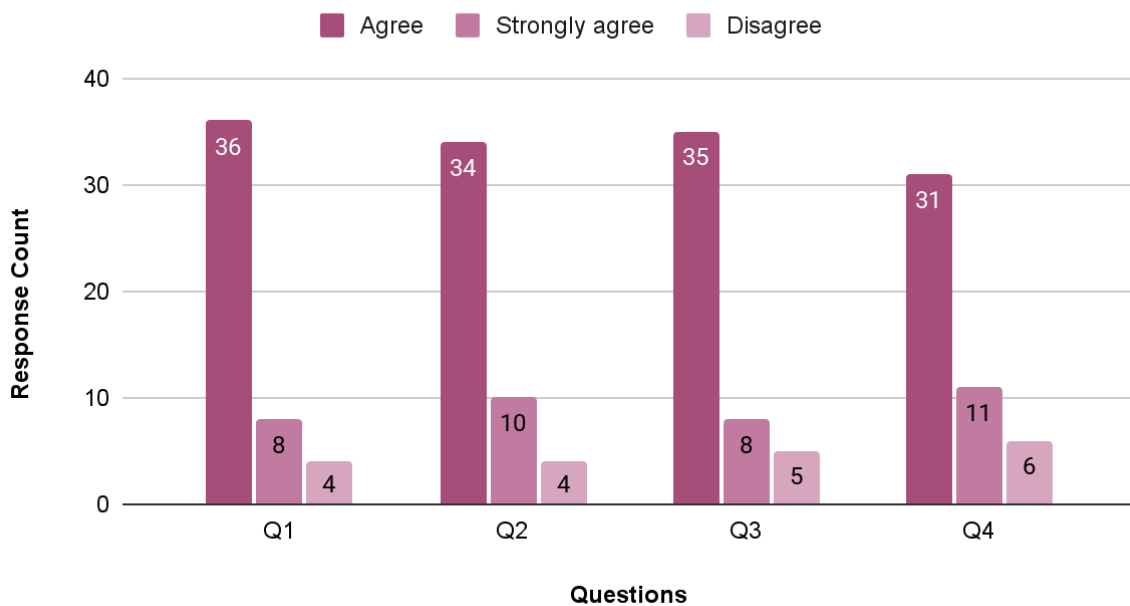
Q3: I was able to critically analyse the initiatives taken up by the Govt to safeguard the environment and how to work with various levels of stakeholders for moving towards a sustainable lifestyle.

Q4: I am confident to apply the knowledge and skills learnt to conduct awareness sessions, research and analyse environmental issues scientifically in the field.



Outcome Code	Learning Outcome Focus	Strongly Agree (%)	Agree (%)	Disagree (%)	Positive (%)
Q1	Recall concepts & communicate environmental concerns	16.7%	75%	8.3%	91.7%
Q2	Understand pollution, resource misuse & interventions	20.8%	70.8%	8.3%	91.7%
Q3	Analyse govt initiatives & stakeholder engagement	16.7%	72.9%	10.4%	89.6%
Q4	Apply knowledge for awareness, research & field analysis	22.9%	64.6%	12.5%	87.5%

### Question-wise Analysis





◇ **Q1 — Remembering Environmental Concepts & Communicating Clearly**

**Positive Responses (SA + A): 91.7%**

- Students showed strong grasp of definitions, terms, and concepts.
  - **8.3% disagreement** suggests a few students may need reinforcement in conceptual clarity and communication skills.
- 

◇ **Q2 — Understanding Pollution Types, Natural Resource Misuse & Preventive Interventions**

**Positive Responses: 91.7%**

- Students demonstrated strong understanding of pollution, natural resource misuse, and preventive strategies.
  - **8.3% disagreed**, indicating moderate scope for deeper conceptual reinforcement.
- 

◇ **Q3 — Critically Analysing Government Initiatives & Stakeholder Collaboration**

**Positive Responses: 89.6%**

- Students can critically analyse government environmental initiatives and stakeholder roles.
  - **10.4% disagreement** — the highest — suggests students find advanced analysis and policy interpretation more challenging.
- 

◇ **Q4 — Confidence in Applying Knowledge for Awareness, Research & Field Analysis**



## Positive Responses: 87.5%

- Students feel reasonably confident applying knowledge in practical contexts.
- **12.5% disagreement** — highest among all outcomes — indicates a need for more hands-on practice and experiential learning.

## Key Insights (Executive Summary)

- ✓ Students demonstrate **strong foundational understanding** of environmental concepts (Q1, Q2).
- ✓ **Critical analysis (Q3)** shows good performance but reveals a moderate learning gap — students may need more structured policy discussions and case studies.
- ✓ **Application confidence (Q4)** is the lowest area — indicating a need for more field-based practice, awareness campaigns, or research projects.
- ✓ Overall satisfaction is high, with **87%–92% positive responses** across outcomes.

## Overall Dashboard Conclusion

The course demonstrates **strong conceptual achievement** and **good analytical ability**, with clear opportunities to further enhance practical application confidence and policy-level understanding. With **nearly 90% positive responses across all outcomes**, students show readiness but may benefit from more experiential components.

## Course Exit Survey – Dashboard Summary

**Program:** BSW

**Semester and Year:** Sem 1 AY 2025-2026

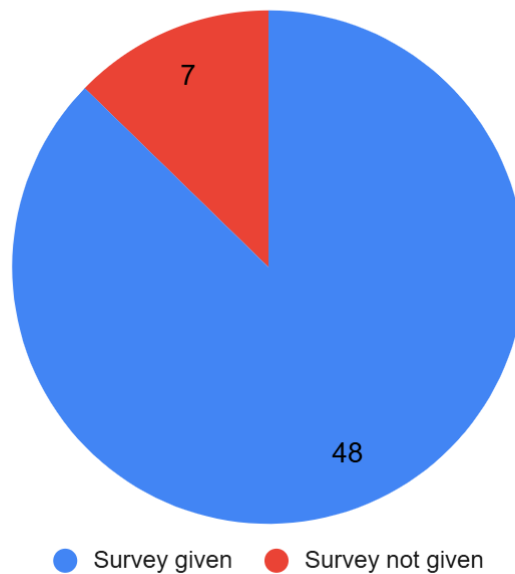
**Course Code:** OE 101

**Course Name:** Health and Nutrition



## Response Analysis

Total Students: 55



A total of **48 students** responded. The feedback reflects **good conceptual understanding**, strong application ability, and clear scope for strengthening holistic health and public health concepts.

### Questions

Q1: I was able to recall types of nutrients and their sources to enhance foundational knowledge in nutrition.

Q2: I was able to understand the bio-psychosocial model of health to foster a holistic approach to well-being.

Q3: I was able to analyze factors affecting malnutrition in India and identify key issues in public health.

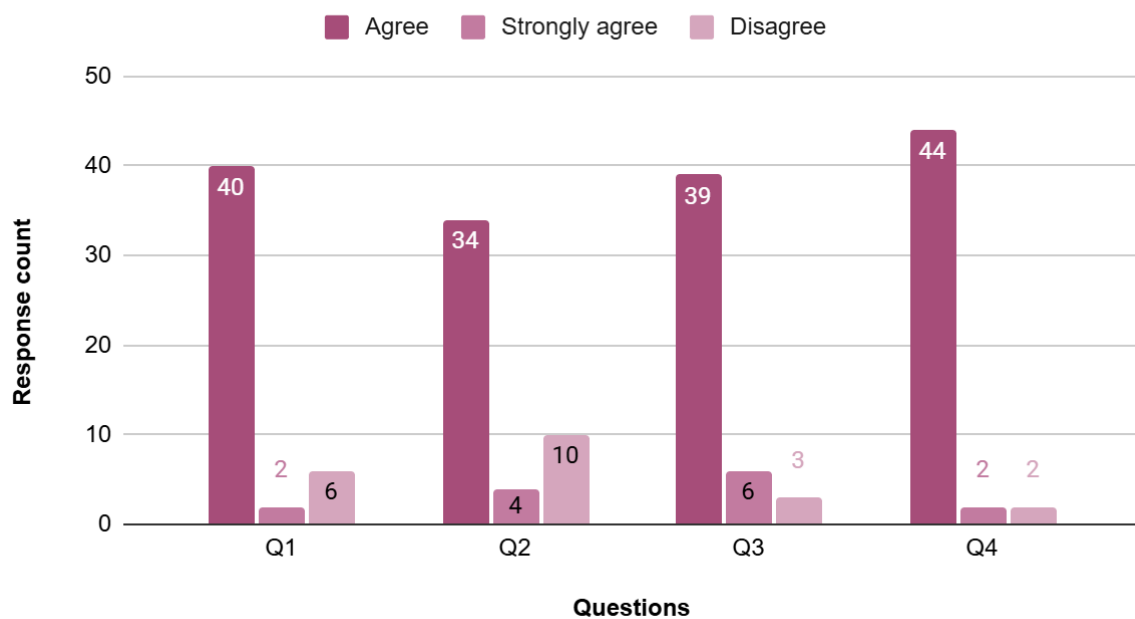
Q4: I was able to apply knowledge in planning low-cost, balanced meals using locally available foods to promote nutritional sustainability.

Outcome Code	Learning Outcome Focus	Strongly Agree (%)	Agree (%)	Disagree (%)	Positive (%)



<b>Q1</b>	Recall nutrients & sources	4.2%	83.3%	12.5%	87.5%
<b>Q2</b>	Understand bio- psychosocial model	8.3%	70.9%	20.8%	79.2%
<b>Q3</b>	Analyze malnutrition & public health issues	12.5%	81.3%	6.2%	93.8%
<b>Q4</b>	Apply knowledge to plan balanced, low-cost meals	4.2%	91.7%	4.2%	95.8%

### Question-wise Analysis



#### ◆ Q1 — Recalling Types of Nutrients & Their Sources

##### Positive Responses: 87.5%

- Students have a strong foundational understanding of nutrients.
- **12.5% disagreement** suggests a need for more reinforcement through charts, demonstrations, or examples.

#### ◆ Q2 — Understanding the Bio-Psychosocial Model of Health

##### Positive Responses: 79.2%

- This is the **lowest-rated outcome**.
- **20.8% disagreed**, indicating students found the holistic model challenging or abstract.



- More real-life examples, case studies, and discussions may improve clarity.

---

### ◆ Q3 — Analyzing Malnutrition Factors & Public Health Issues

**Positive Responses: 93.8%**

- Students are confident in analyzing determinants of malnutrition in India.
- Very strong conceptual grasp with minimal disagreement (6.2%).

---

### ◆ Q4 — Applying Knowledge to Plan Low-Cost, Balanced Meals

**Positive Responses: 95.8%**

- Students effectively applied nutritional concepts to practical meal planning.
- Reflects strong skill-based learning and sustainability orientation.

### ✦ Key Insights (Executive Summary)

- ✓ **Strong foundations in nutrition (Q1)**, though a few students require reinforcement of nutrient types and sources.
- ✓ **Bio-psychosocial model (Q2) needs improvement**, as it received the highest disagreement—may require simplified teaching frameworks or relatable examples.
- ✓ **Excellent analytical abilities for public health issues (Q3)**, indicating effective teaching of malnutrition and its determinants.
- ✓ **Very strong application skills (Q4)** — students confidently planned sustainable, balanced meals, showing practical understanding.

### ✦ Overall Dashboard Conclusion

The course shows **high learning achievement**, especially in analytical and applied skills (Q3 & Q4).

With **79%–96% positive responses**, students demonstrate solid understanding and practical ability, with clear opportunities for improving holistic health concepts.

### Course Exit Survey – Dashboard Summary

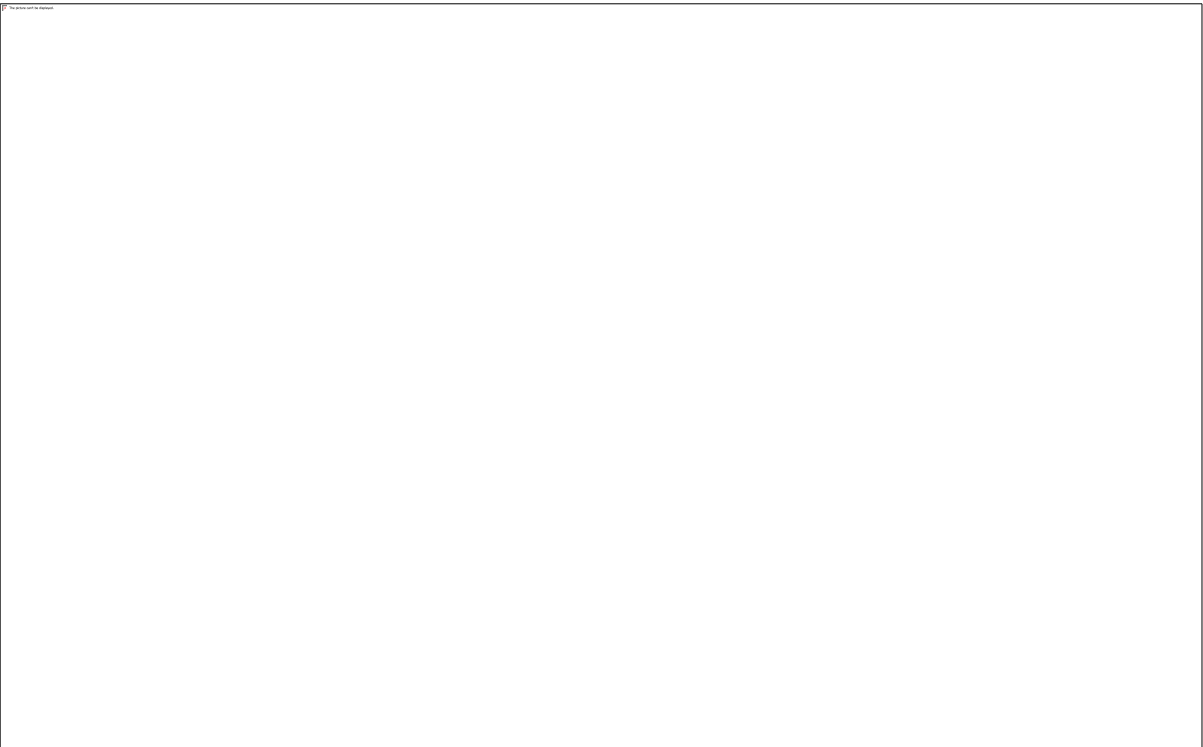
**Program:** BSW

**Semester and Year:** Sem 1 AY 2025-2026

**Course Code:** IKS 101meTimestampstamp



**Course Name:** Indian Knowledge System in Social Work Profession



A total of **39 students** responded. The feedback reflects **strong conceptual learning**, good analytical ability, and moderate confidence in applying historical methodologies. The philosophical foundations outcome shows strong comprehension with *zero disagreement*.

**Questions**

- Q1: I was able to remember key stages of Social Work evolution in Western and Indian contexts.
- Q2: I was able to apply the methodologies of historical figures in contemporary Social Work practice.
- Q3: I was able to analyze the impact of social reformers like Jyotirao Phule, B.R. Ambedkar, Mahatma Gandhi, etc on Social Work.
- Q4: I was able to understand philosophical foundations like Mimansa, Nyaya, and Vedanta and their linkages to Social Work.

Question	Learning Outcome Focus	Strongly Agree (%)	Agree (%)	Disagree (%)	Positive (%)
----------	------------------------	--------------------	-----------	--------------	--------------



<b>Q1</b>	Evolution of Social Work (Western & Indian)	<b>17.9%</b>	<b>82.1%</b>	0%	<b>100%</b>
<b>Q2</b>	Apply methodologies of historical figures	<b>33.3%</b>	<b>61.5%</b>	<b>5.1%</b>	<b>94.9%</b>
<b>Q3</b>	Analyze impact of major reformers	<b>25.6%</b>	<b>71.8%</b>	<b>2.6%</b>	<b>97.4%</b>
<b>Q4</b>	Understand Indian philosophical foundations	<b>28.2%</b>	<b>71.8%</b>	0%	<b>100%</b>

◆ **Q1 — Remembering Key Stages of Social Work Evolution (Western & Indian)**  
**Positive Responses (SA + A): 100%**



- Excellent foundational understanding of historical evolution.
- Zero disagreement → students clearly recall major milestones and stages.

---

◆ **Q2 — Applying Methodologies of Historical Figures to Contemporary Practice**

**Positive Responses: 94.9%**

- Students show strong ability to connect classical methodologies to modern practice.
- **2 students (5.1%) disagreed** — indicates moderate scope for clarifying application-based learning.

---

◆ **Q3 — Analyzing Impact of Social Reformers on Social Work**

**Positive Responses: 97.4%**

- Students demonstrate strong analytical skills regarding contributions of Phule, Ambedkar, Gandhi, etc.
- **Only 1 disagreement (2.6%)** — minor reinforcement may be beneficial for a few learners.

---

◆ **Q4 — Understanding Indian Philosophical Foundations (Mimansa, Nyaya, Vedanta)**

**Positive Responses: 100%**

- Students show excellent comprehension of philosophical linkages to social work.
- Zero disagreement → outcome strongly achieved.

✦ **Key Insights (Executive Summary)**

- ✓ **Q1 and Q4 achieved 100% positive responses**, showing exceptional learning in foundational history and philosophical frameworks.
- ✓ Students show **strong analytical ability** in examining contributions of historical reformers (Q3).
- ✓ **Application-oriented outcome (Q2)** has the highest disagreement (5.1%), indicating students may need more examples or practice applying classical methodologies to current social work situations.
- ✓ Overall performance is excellent across all outcomes.

✦ **Overall Dashboard Conclusion**

The course exhibits **outstanding learning achievement**, with **94%–100% positive responses** across all outcomes. Students demonstrate a high level of historical awareness, analytical thinking, and philosophical understanding relevant to social work.



## Course Exit Survey – Dashboard Summary

**Program:** BSW

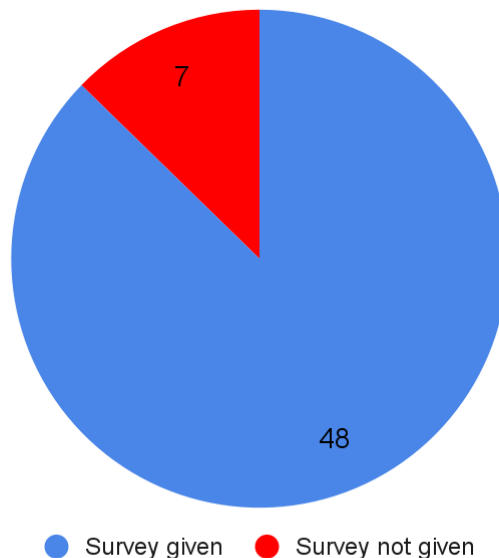
**Semester and Year:** Sem 1 AY 2025-2026

**Course Code:** OE 102

**Course Name:** Introduction to Psychology

### Response Analysis

Total Students: 55



A total of **48 students** responded to the survey. Overall responses indicate **high satisfaction and strong achievement** of all four learning outcomes.

### Questions

Q1: I was able to demonstrate an understanding of psychology and the different fields of Psychology and its relevance in dealing with Human behaviour.

Q2: I was able to analyze and differentiate various approaches to personality such as Trait Approach and Type approach and their application in human behaviour.

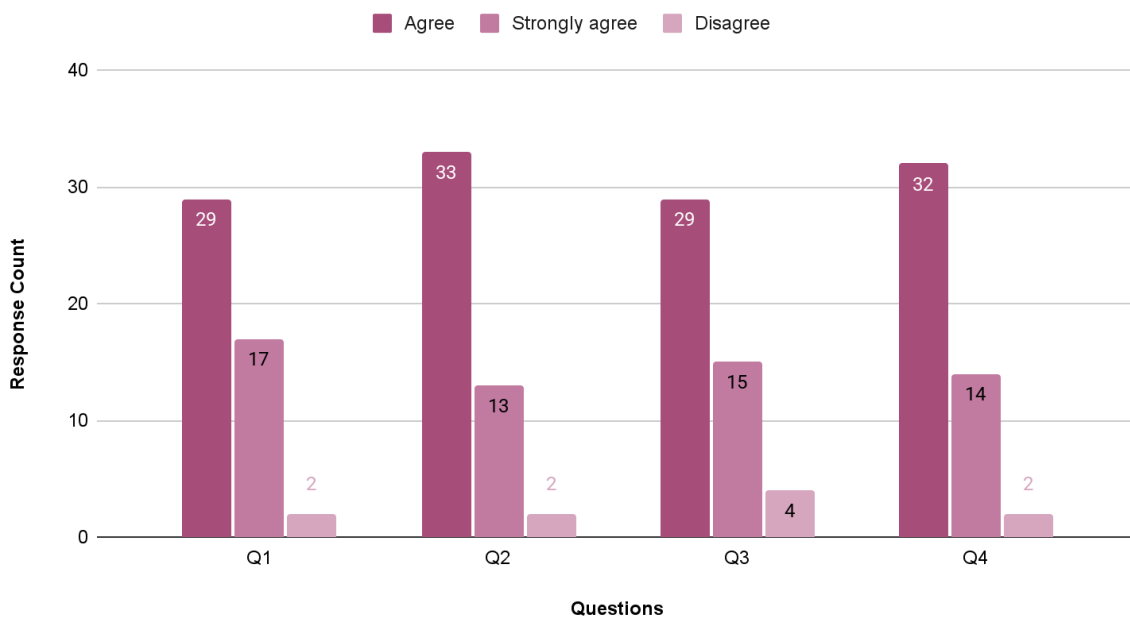
Q3: I was able to understand the relevance and application of personality theories such as Freudian Theory, Erick Erickson's theory, Behaviourism theory and Humanistic theory to real-life situations.

Q4: I was able to evaluate the relevance of personality theories and approaches to social work practice.



Question	Learning Outcome Focus	Strongly Agree	Agree	Disagree	Positive (%)
<b>Q1</b>	Understanding psychology concepts	35.4%	60.4%	4.2%	<b>95.8%</b>
<b>Q2</b>	Analyze personality approaches	27.1%	68.8%	4.2%	<b>95.9%</b>
<b>Q3</b>	Apply personality theories	31.3%	60.4%	8.3%	<b>91.7%</b>
<b>Q4</b>	Evaluate theory relevance in practice	29.2%	66.7%	4.2%	<b>95.9%</b>

### Question-wise Analysis



#### ◆ Q1 — Understanding of Psychology Fundamentals

##### Positive Responses: 95.8%

- Students demonstrated strong understanding of psychology concepts and relevance to human behaviour.
- Disagree: 4.2%**

#### ◆ Q2 — Analysis of Trait & Type Approaches to Personality

##### Positive Responses: 95.9%



- Students were able to differentiate personality approaches and apply them correctly.
  - **Highest “Agree” score across all outcomes.**
- 

#### ◆ Q3 — Application of Major Personality Theories

##### **Positive Responses: 91.7%**

- Students could relate Freudian, Erikson, Behaviourism, and Humanistic theories to real-life contexts.
  - **Disagree: 8.3% (highest among all questions)** → Indicates a need for more practical examples, activities, or case-based learning.
- 

#### ◆ Q4 — Evaluation of Theories in Social Work Practice

##### **Positive Responses: 95.9%**

- Students clearly understood how personality theories support professional social work practice.
- Strong outcome achievement and relevance.

#### ✦ Key Insights (Executive Summary)

- ✓ **Excellent understanding and conceptual clarity** across all outcomes.
- ✓ **Strong application ability**, though Q3 reveals a slight dip → opportunity to add case studies, role-play activities, or experiential exercises.
- ✓ **High relevance to professional practice**, especially in social work (Q4).

#### ✦ Overall Dashboard Conclusion

**The course demonstrates strong effectiveness**, with more than **90% student satisfaction** across all learning outcomes. Students clearly understand psychology concepts, can analyze personality approaches, and recognize their relevance to human behaviour and social work practice.

#### **Course Exit Survey – Dashboard Summary**

**Program:** BSW

**Semester and Year:** Sem 1 AY 2025-2026

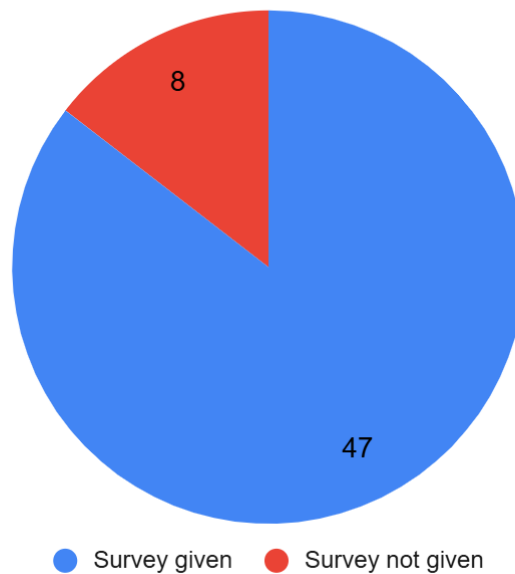
**Course Code:** Major 101

**Course Name:** Introduction To Social Work Methods



## Response Analysis

Total Students: 55



A total of **47 students** responded. Overall, the responses show **very strong achievement** across all four outcomes, with high conceptual clarity and good understanding of both direct and indirect social work methods.

### Questions

Q1: I was able to understand social work as a profession and its guiding principles for developing a foundational knowledge of the field.

Q2: I was able to understand direct intervention skills such as case work , Group work , community organization to effectively address client needs.

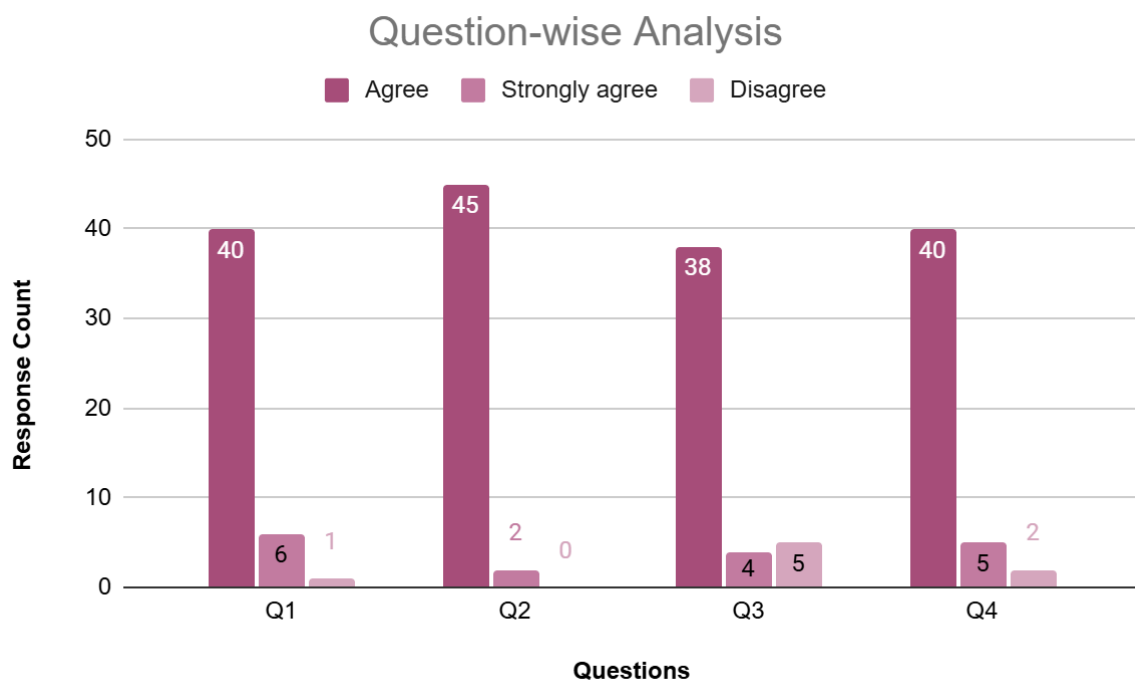
Q3: I Was able To analyze the overview of indirect methods such as research, administration, and social action in social work.

Q4: I was able to evaluate the effectiveness of various social work methods in practice to improve service delivery.

Outcome Code	Learning Outcome Focus	Strongly Agree (%)	Agree (%)	Disagree (%)	Positive (%)
--------------	------------------------	--------------------	-----------	--------------	--------------



<b>Q1</b>	Understanding social work profession	12.8%	85.1%	2.1%	97.9%
<b>Q2</b>	Direct intervention skills	4.3%	95.7%	0%	100%
<b>Q3</b>	Indirect methods (research, admin, social action)	8.5%	80.9%	10.6%	89.4%
<b>Q4</b>	Evaluating social work methods for practice	10.6%	85.1%	4.3%	95.7%



◆ **Q1 — Understanding Social Work as a Profession**

**Positive Responses (SA + A): 97.9%**

- Students showed excellent understanding of the profession, principles, and foundational concepts.
- Only 1 student disagreed.

◆ **Q2 — Understanding Direct Intervention Skills (Casework, Group Work, Community Organization)**

**Positive Responses: 100%**

- All students (45 Agree + 2 Strongly Agree) acknowledged effective learning of direct intervention methods.



- This is the strongest outcome, indicating high teaching effectiveness.

---

◆ **Q3 — Understanding Indirect Methods (Research, Administration, Social Action)**

**Positive Responses: 89.4%**

- Majority understood indirect methods well.
- 5 students (10.6%) disagreed, suggesting the need for more clarity or practical exposure to research/admin/social action processes.

---

◆ **Q4 — Evaluating Effectiveness of Social Work Methods in Practice**

**Positive Responses: 95.7%**

- Students were able to critically evaluate social work methods for real-world service delivery.
- 2 students disagreed, indicating minor room for improvement in applied evaluation.

✦ **Key Insights (Executive Summary)**

- ✓ **Excellent conceptual clarity** about the profession and foundational principles (Q1).
- ✓ **Outstanding achievement in direct intervention methods (Q2) — 100% positive feedback**, strongest of all outcomes.
- ✓ **Indirect methods (Q3)** show slightly lower clarity — **10.6% disagreement**, indicating need for more exposure to research, administrative roles, and social activism.
- ✓ **High competence in evaluating practice methods (Q4)** — reflects strong critical thinking and application skills.
- ✓ Overall satisfaction and outcome achievement remain consistently high.

✦ **Overall Dashboard Conclusion**

The course has been **highly effective**, enabling students to understand both conceptual and applied dimensions of social work practice.

With **89%–100% positive responses** across all outcomes, the course demonstrates robust teaching quality and strong student learning achievement.

📊 **Course Exit Survey – Dashboard Summary**



**Program:** BSW

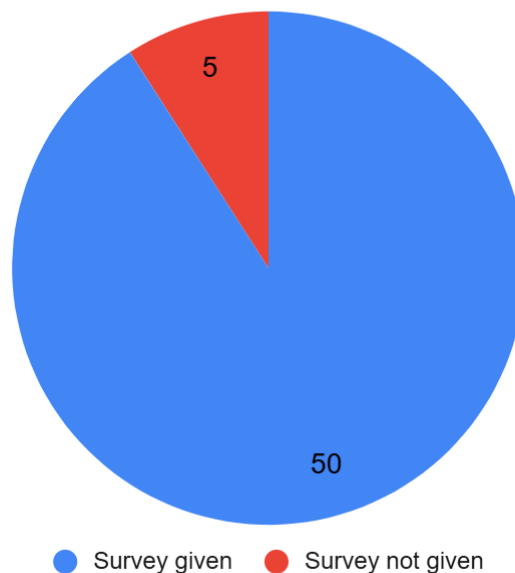
**Semester and Year:** Sem 1 AY 2025-2026

**Course Code:** VSC 101 TimeTimestampstamp

**Course Name:** Orientation to Field Practicum

## Response Analysis

Total Students: 55



A total of **50 students** responded. The feedback indicates **extremely high learning achievement**, with almost all outcomes showing *zero to minimal disagreement* and strong conceptual and practical mastery.

### Questions

Q1: I Was able to Define key concepts and principles of fieldwork in social work

Q2: I was able to describe the different responsibilities and functions of a social worker in diverse environments.

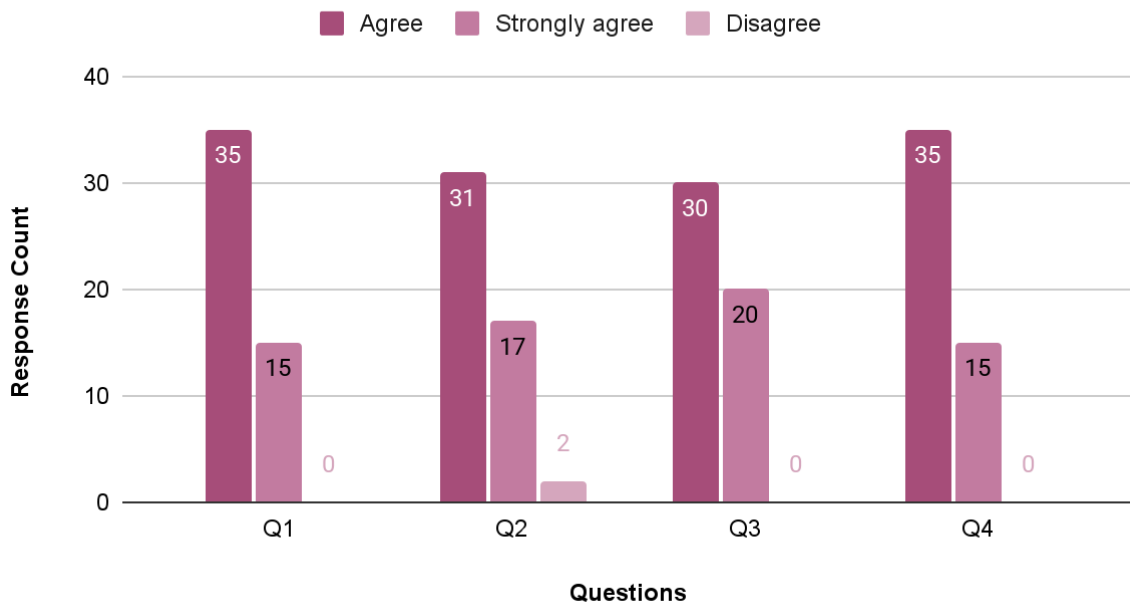
Q3: I was able to demonstrate the ability to conduct non-participatory observations and fact-finding tools in a social work setting.

Q4: I was able to develop basic skills and techniques in need assessment, community mapping and documentation of Fieldwork experiences.



Outcome Code	Learning Outcome Focus	Strongly Agree (%)	Agree (%)	Disagree (%)	Positive (%)
Q1	Define concepts & principles of fieldwork	30%	70%	0%	100%
Q2	Describe responsibilities of social workers	34%	62%	4%	96%
Q3	Conduct non-participatory observation & fact-finding	40%	60%	0%	100%
Q4	Skills in need assessment, community mapping & documentation	30%	70%	0%	100%

### Question Wise Analysis



#### ◆ Q1 — Defining Key Concepts & Principles of Fieldwork

##### Positive Responses (SA + A): 100%

- Every student (35 Agree + 15 Strongly Agree) understood core fieldwork principles.
- Indicates excellent clarity and foundational instruction.

#### ◆ Q2 — Understanding Social Worker Responsibilities Across Environments

##### Positive Responses: 96%



- Strong understanding of diverse roles and responsibilities.
- Only 2 students (4%) disagreed — slight need for more examples from varied field settings.

---

### ◆ Q3 — Demonstrating Non-Participatory Observation & Fact-Finding Skills

#### Positive Responses: 100%

- All students reported mastery of observation and fact-finding tools.
- Reflects strong practical exposure and hands-on learning.

---

### ◆ Q4 — Developing Skills in Need Assessment, Community Mapping & Documentation

#### Positive Responses: 100%

- Students have successfully built the foundational skills required for community-level fieldwork.
- Shows excellent alignment between field exposure and classroom support.

### ✦ Key Insights (Executive Summary)

- ✓ **Perfect learning achievement** in Q1, Q3, and Q4; students fully understood core fieldwork concepts and essential skills.
- ✓ **Very high performance in Q2**, with only 4% disagreement — indicates nearly all students could describe social worker roles effectively.
- ✓ **Practical skill-building (Q3 & Q4) is extremely strong**, showing excellent course design and fieldwork implementation.
- ✓ **No major learning gaps**, and outcomes show exceptional student readiness for real-world field practice.

### ✦ Overall Dashboard Conclusion

With **96%–100% positive responses**, this course demonstrates **exceptional effectiveness** in building both foundational understanding and practical fieldwork competencies. Students exhibit strong readiness to apply these skills in real social work environments.

### Course Exit Survey – Dashboard Summary

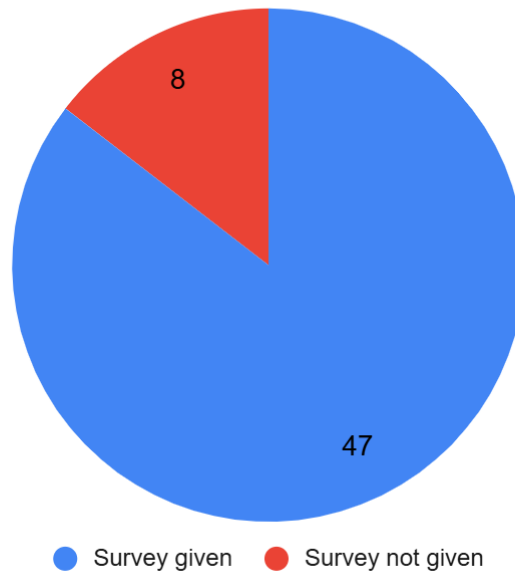
Program: BSW



**Semester and Year:** Sem 1 AY 2025-2026  
**Course Code:** VEC 101meTimestampstamp  
**Course Name:** Professional Values and Ethics

## Response Analysis

Students Count: 55



A total of **47 students** responded. The feedback indicates **strong conceptual learning**, good understanding of values, and moderately strong analytical and evaluative skills, with specific scope to strengthen ethical reasoning under complex field situations.

### Questions

Q1: I was able to remember the concept of profession and attributes of a profession, broadening the foundational knowledge in social work.

Q2: I was able to understand the implication of Values with reference to social work Practice.

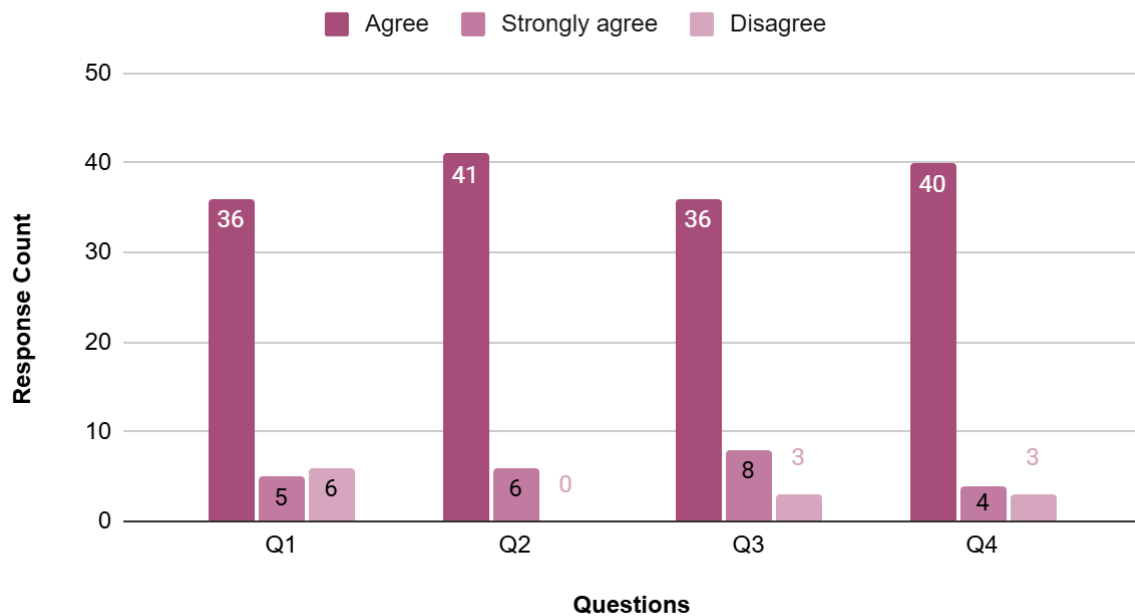
Q3: I was able to analyze ethical dilemmas in real-world scenarios, enhancing critical thinking and ethical reasoning skills in students.

Q4: I was able to evaluate the ethical decision making in field practice, fostering the ability to make sound ethical decisions.



Outcome Code	Learning Outcome Focus	Strongly Agree (%)	Agree (%)	Disagree (%)	Positive (%)
Q1	Concept of profession & attributes	10.6%	76.6%	12.8%	87.2%
Q2	Implication of values in social work practice	12.8%	87.2%	0%	100%
Q3	Analyse ethical dilemmas	17%	76.6%	6.4%	93.6%
Q4	Evaluate ethical decision-making in field practice	8.5%	85.1%	6.4%	93.6%

### Question-wise Analysis



#### ◆ Q1 — Remembering Concepts & Attributes of Profession

**Positive Responses (SA + A): 87.2%**

- Students show strong foundational understanding of profession-related concepts.
- **12.8% disagreement** indicates some students require reinforcement of basic professional attributes.

#### ◆ Q2 — Understanding Social Work Values in Practice



### Positive Responses: 100%

- All students (41 Agree + 6 Strongly Agree) understood how values guide social work practice.
- Strongest outcome of the course.

---

#### ♦ Q3 — Analyzing Ethical Dilemmas

### Positive Responses: 93.6%

- Students demonstrate strong ethical reasoning skills and ability to analyze dilemmas.
- **6.4% disagreement** suggests a need for more real-life or case-based ethical discussions.

---

#### ♦ Q4 — Evaluating Ethical Decision-Making in Field Practice

### Positive Responses: 93.6%

- Students are confident in evaluating ethical decisions during fieldwork.
- **6.4% disagreement**, similar to Q3, indicates moderate scope to strengthen advanced ethical evaluation frameworks.

#### ✦ Key Insights (Executive Summary)

- ✓ **Values (Q2) achieved 100% positive responses** — excellent conceptual clarity and relevance.
- ✓ **Ethical reasoning (Q3) and decision-making (Q4)** show strong performance, but a few students may benefit from deeper exposure to complex ethical situations.
- ✓ **Foundational clarity (Q1)** is good but has the highest disagreement (12.8%), indicating a need to revisit core professional concepts.
- ✓ Overall, students display **high ethical awareness and strong reflective understanding**.

#### ✦ Overall Dashboard Conclusion

The course demonstrates **high achievement** across all ethical and professional outcomes, with **87%–100% positive responses**. Students show strong readiness for ethical social work practice, with minor improvement areas in foundational concepts and complex ethical reasoning.